

HI | AM

S A N D R A S H A R M A

Interior Design Graduate

Wolverhampton University

2018

Interior design Intern (Office Design)

Wolverhampton Science Park

2017-2019

Senior Interior / Product Designer.

Incube Ltd.

2019-Present

Interior Designer (Restaurant, Bars)

Freelance

2023-Present

PRESENTATION

S A N D R A S H A R M A

-My life at Incube Ltd.

- About Incube
- Interior
- Product Design
- Assembly
- Manufacture
- Installation

-My life s a Freelance Designer

- Brief look at current project
- Design Proposal
- FF&E

-Final Major Project overlook

- Technical Drawings
- Final Presentation



INCUBE LTD

SANDRA SHARMA
SENIOR DESIGNER

DEVELOPING / PROTOTYPING PRODUCTS /
INTERIOR DESIGN IN EDUCATIONAL SECTOR



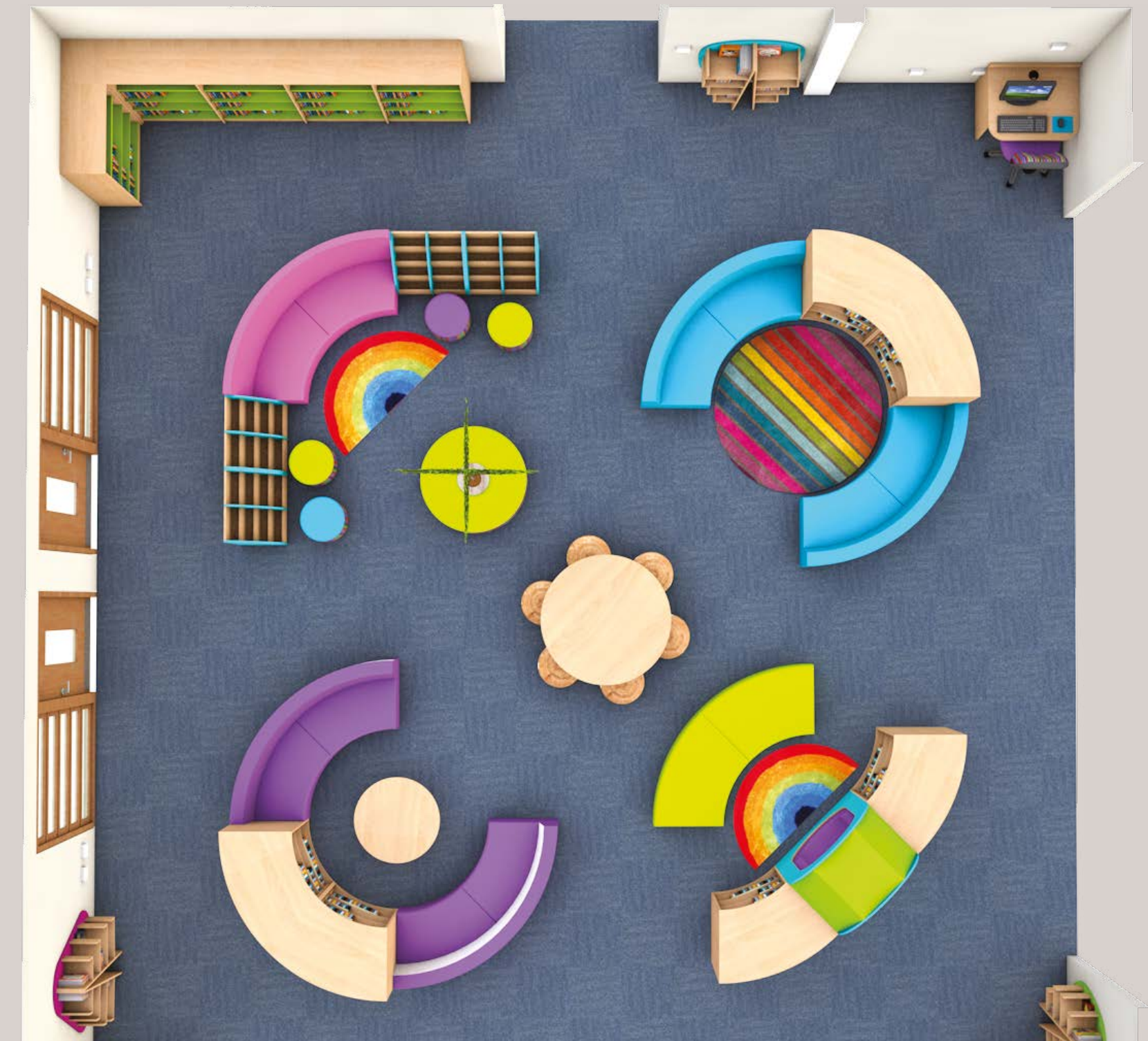
ABOUT

INCUBE LTD.

I got hired in 2019 as a Design Developer (Interior). As the time passed I developed not only interior but product as well.

All of the furniture has been designed with young learners in mind.

Colourful shelving, vibrant seating, stand-out classroom furniture and accessories create an environment that will excite and inspire children.



INCUBE LTD.

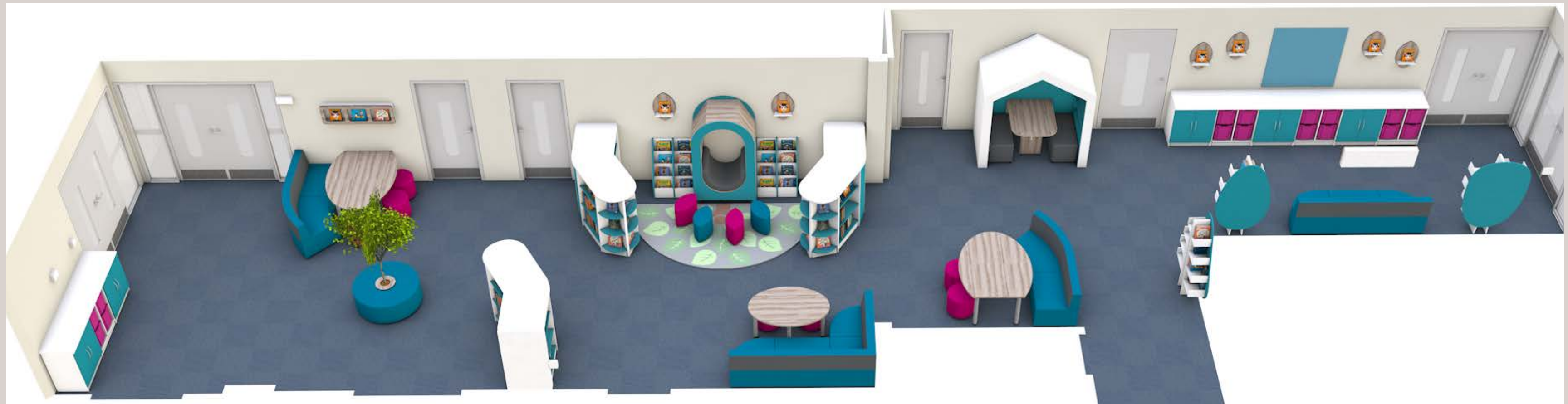
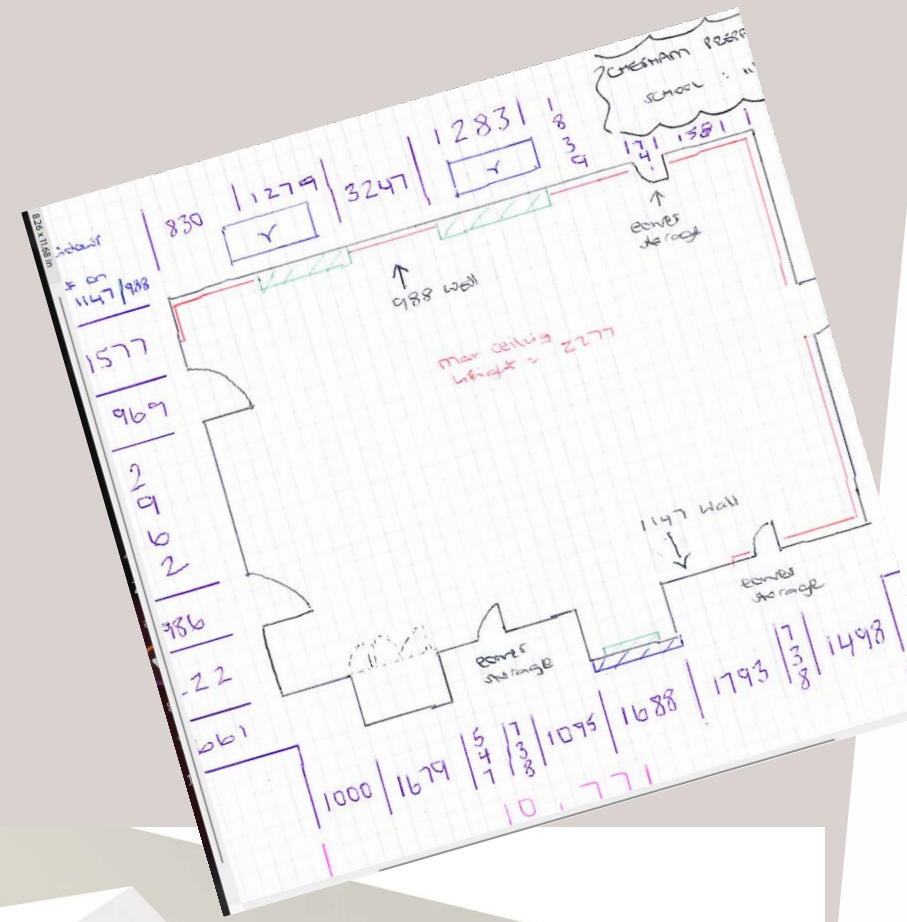
INTERIOR

DESIGN PROCESS

- Consultation (online or over the phone)
- Design Survey (site visit)
- Brief (Creating a brief)

- Drawing up the survey (Vectorworks)
- Drawing up the design
- Renders (Cinema 4D)
- Walkthrough video (Twinmotion)
- FF&E (Product spec and Quote)

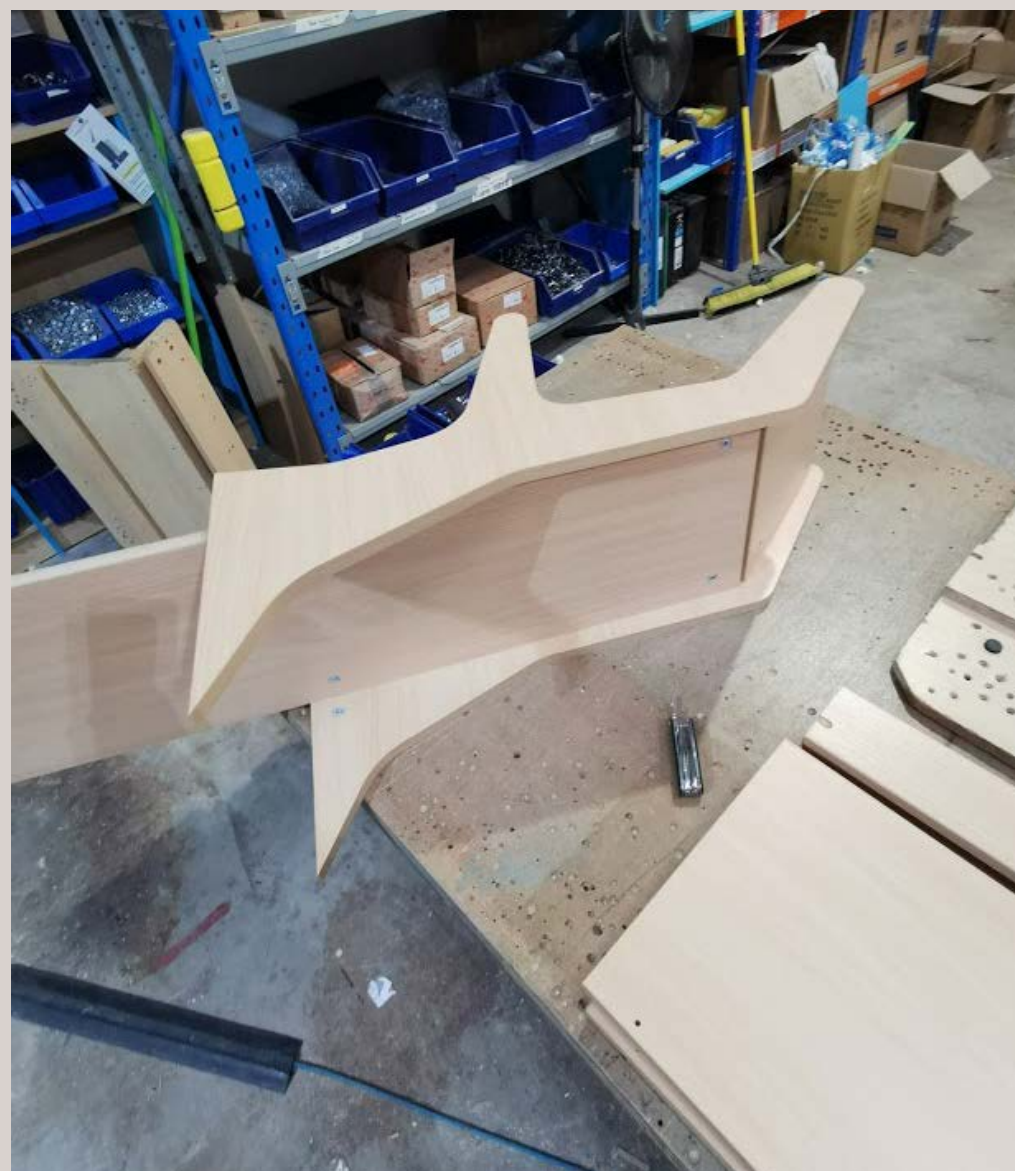
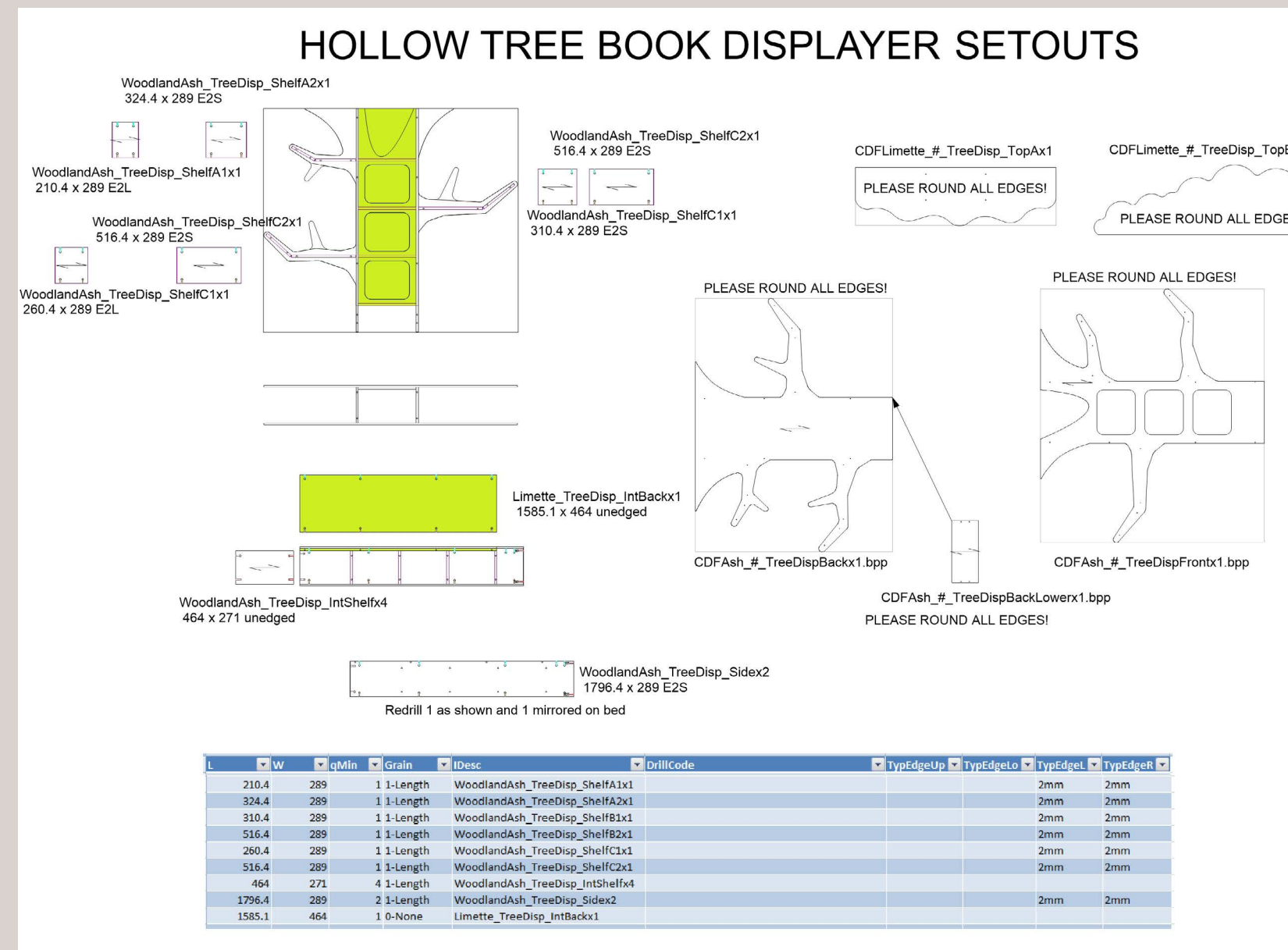
- Design sent to the customer
- Customer Feedback
- Design revision if required



PRODUCT DESIGN

DESIGN PROCESS

- Identify problem (products required, gap in the market)
- Create a Brief (what this product requires to achieve)
- Design draft (Vectorworks)
- Prototyping (create setouts, eliminating mistakes, manufacturing)



ASSEMBLY INSTRUCTIONS

Part of my job is to oversee and create assembly instructions where necessary.

These are created fit consumer in mind to make self assembly as easy as possible. Part of my job is to oversee and create assembly instructions where necessary.

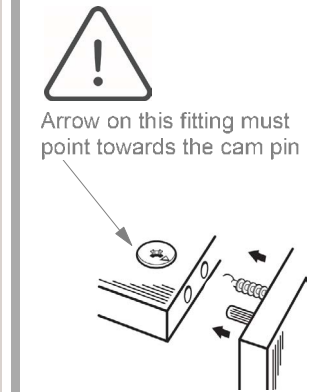
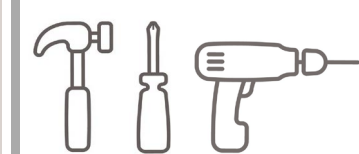
These are created fit consumer in mind to make self assembly as easy as possible.

CORNER PACK 1 1500mmH (CLASSIC) - ASSEMBLY INSTRUCTIONS - PAGE 1 of 2

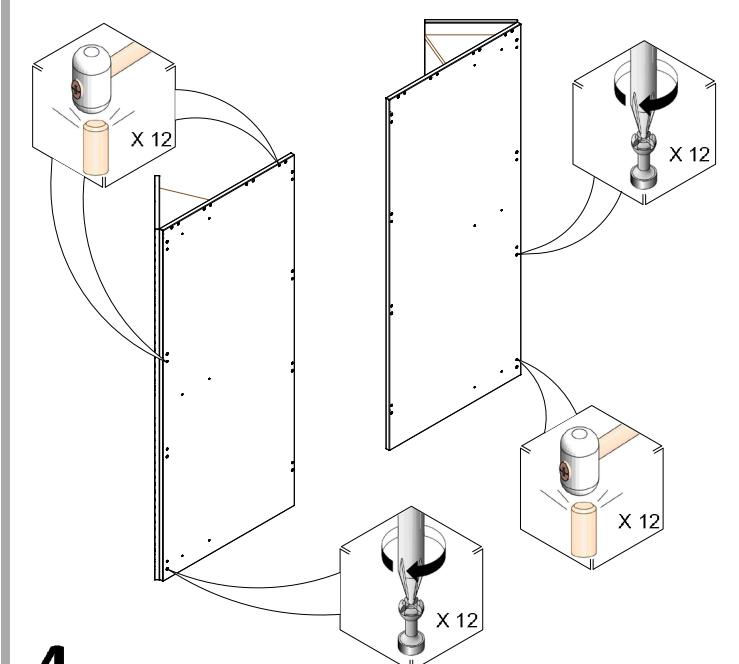
Fittings included



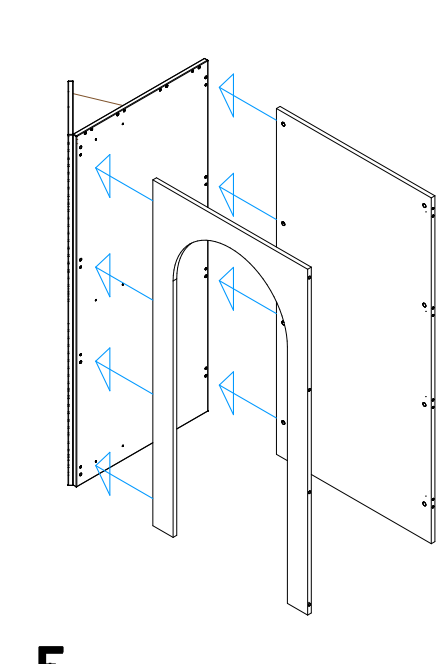
Tools required



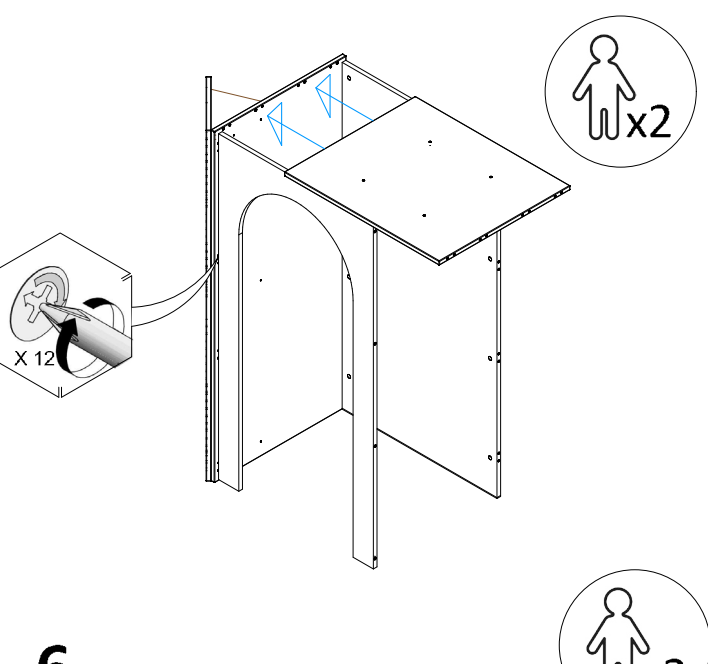
1. Please tap gently when inserting dowels to ensure they do not go all the way through



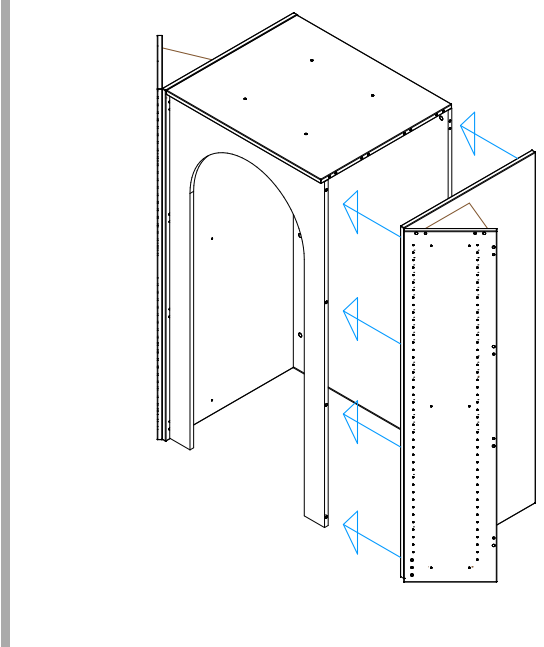
2.



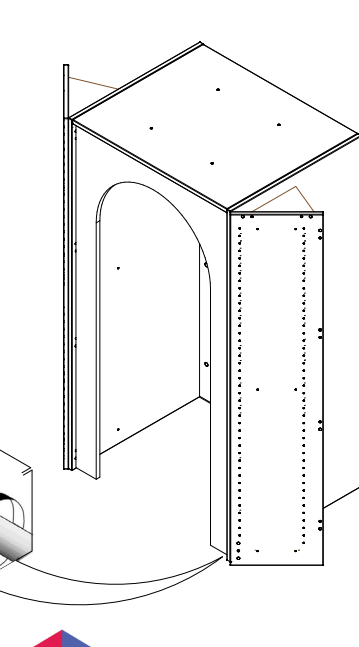
3. Do not push the unit along the floor as this might break the adjustable feet.



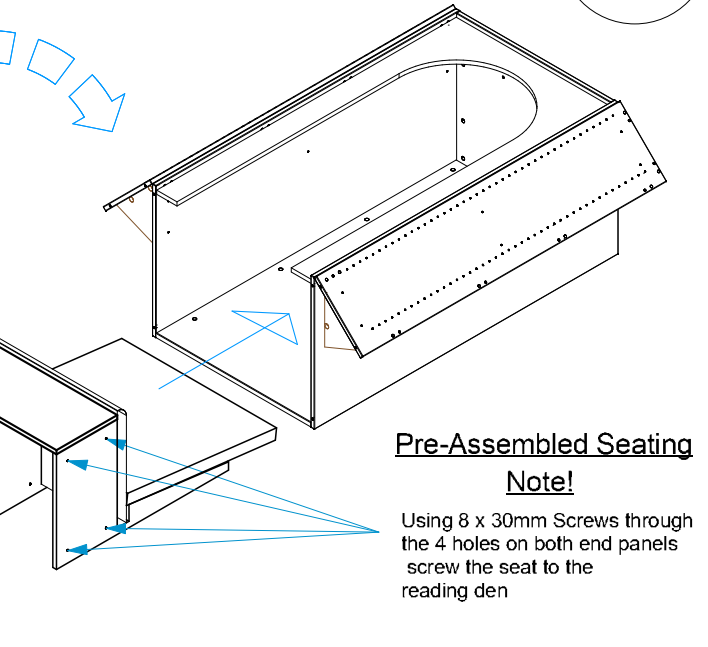
4.



5.



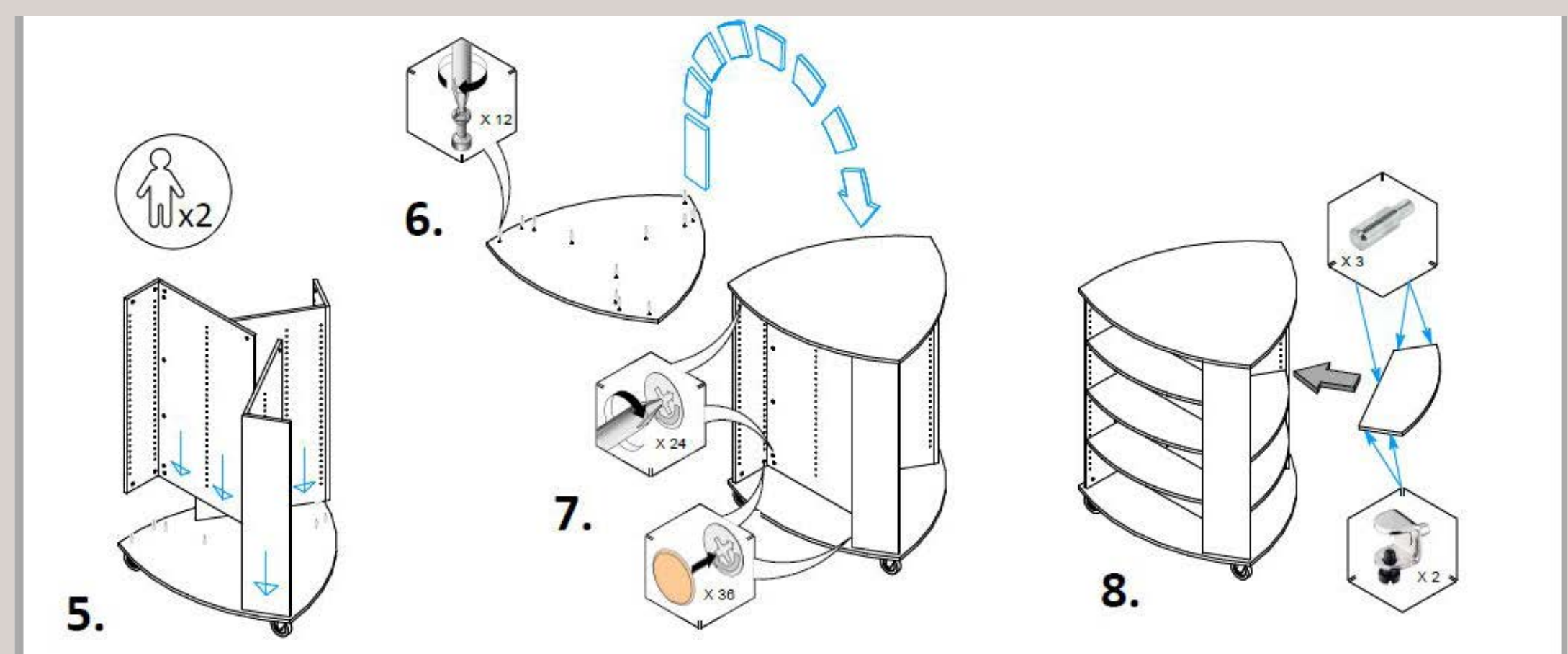
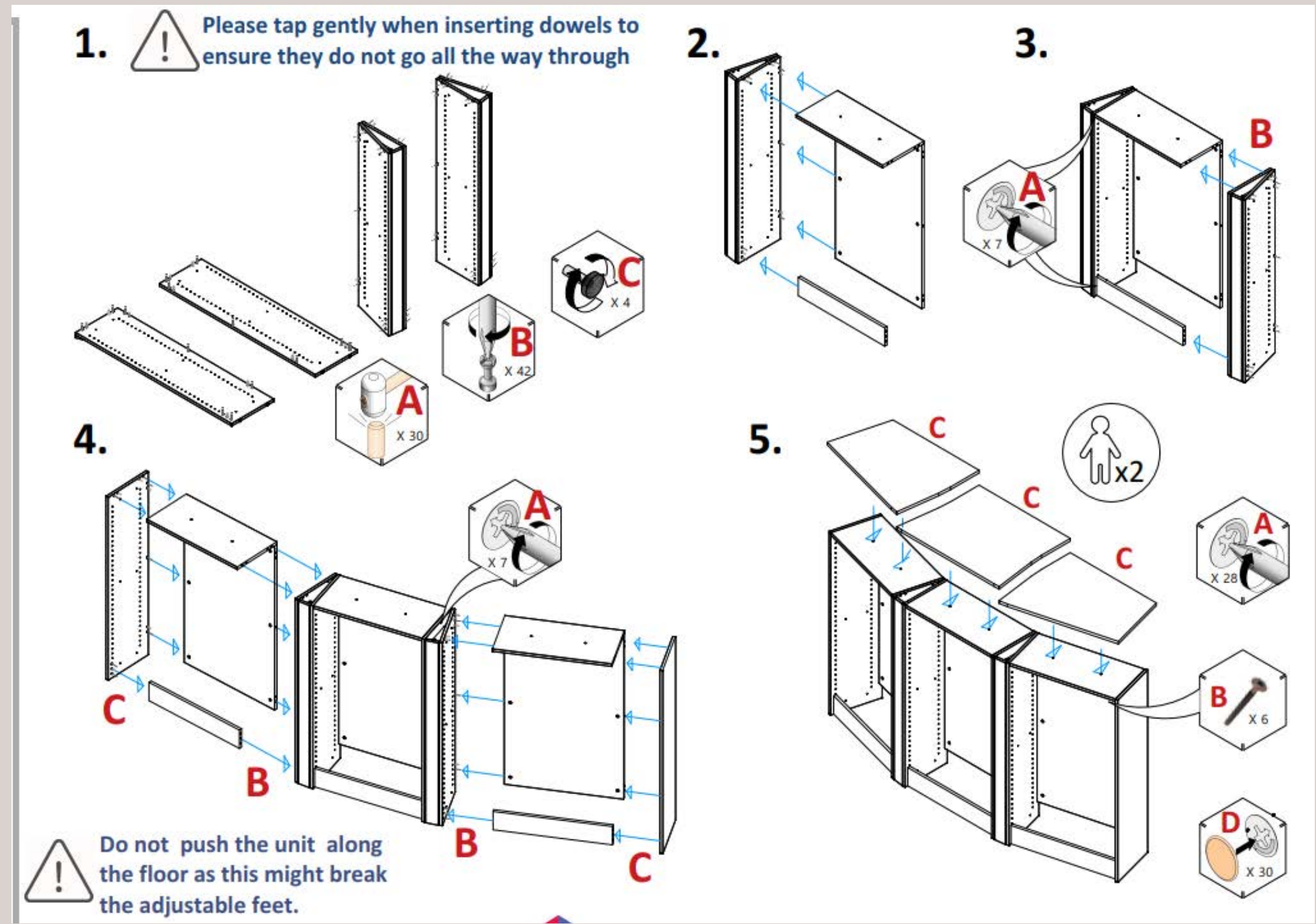
6.



Drawing : CORNER PACK 1 1500mmH (CLASSIC)
Date : Jun 2023 Scale : N/A Drawn by : Sandra Sharma



INCUBE LIMITED, UNIT 9 NEW ROAD INDUSTRIAL ESTATE, HIXON, STAFFORDSHIRE, ST18 0PJ
tel : 01889 271 523 fax : 01889 272 797 email : info@incube.ltd.uk website : www.incube.ltd.uk
This drawing and the equipment depicted within remain the property of Incube Ltd and shall not be copied without permission ©



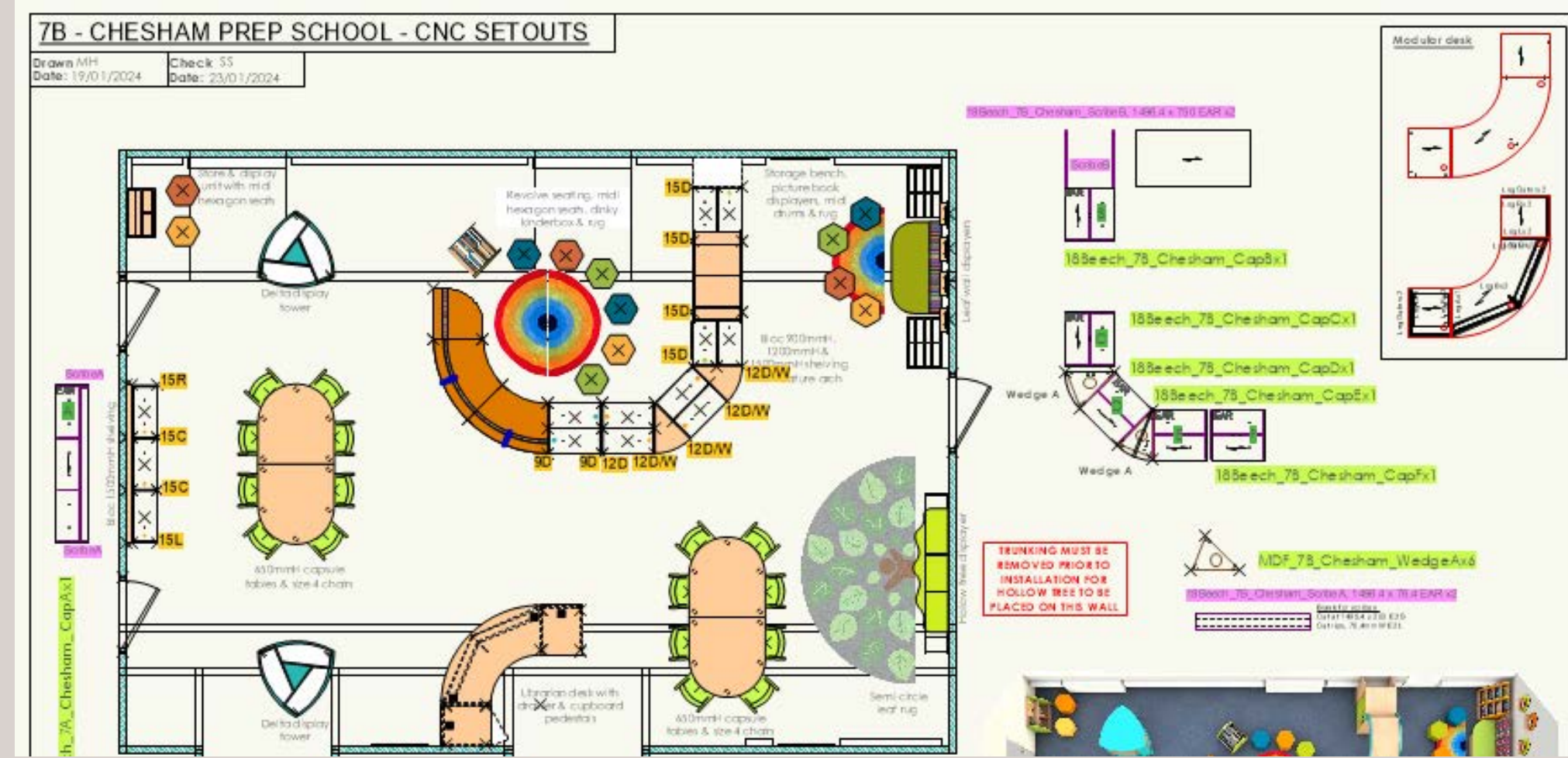
MANUFACTURE

PRODUCTION

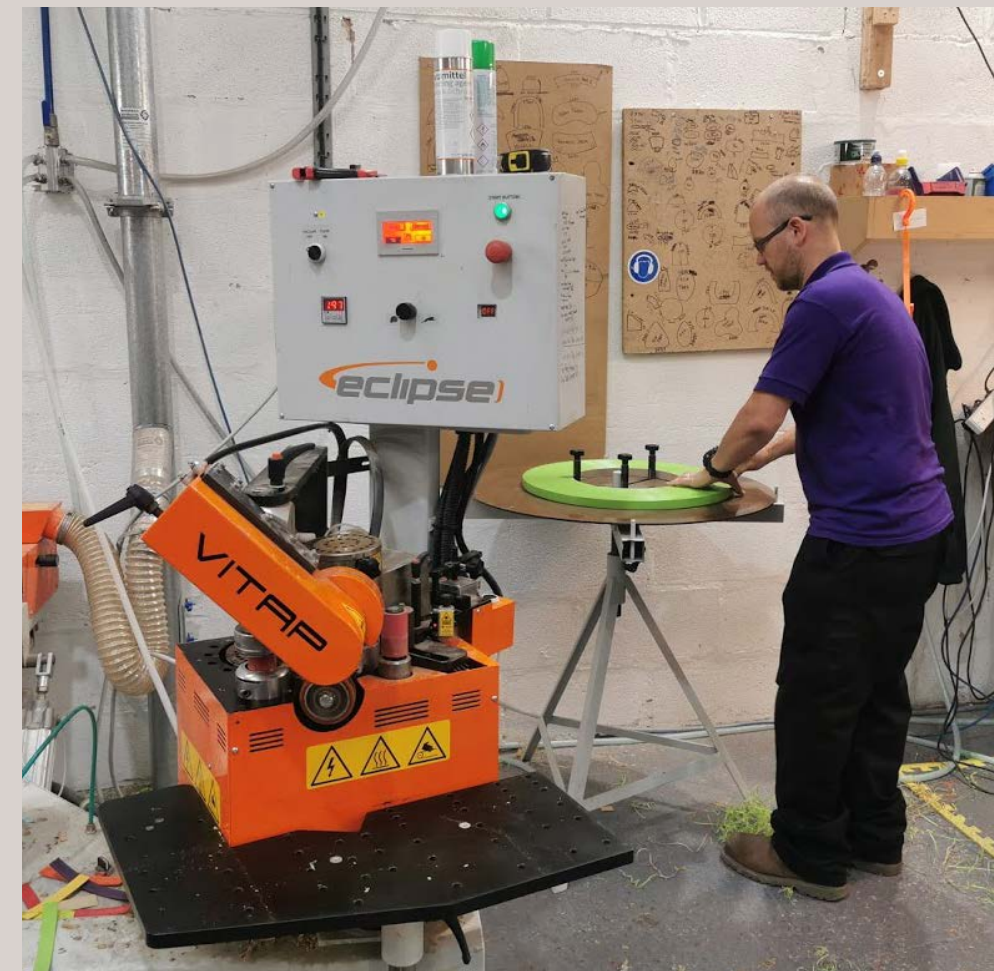
- CNC setouts get produced once the order is placed (Vectorworks, Biesse)
- Listing. All components for the job gets listed (CNC,Beamsaw)

Manufacturing begins

- All Items gets cut (CNC, Beamsaw)
- Edged (Edgebander)
- Drilled and Re-drilled (Skipper, Rover)
- Cleaned and Assembled



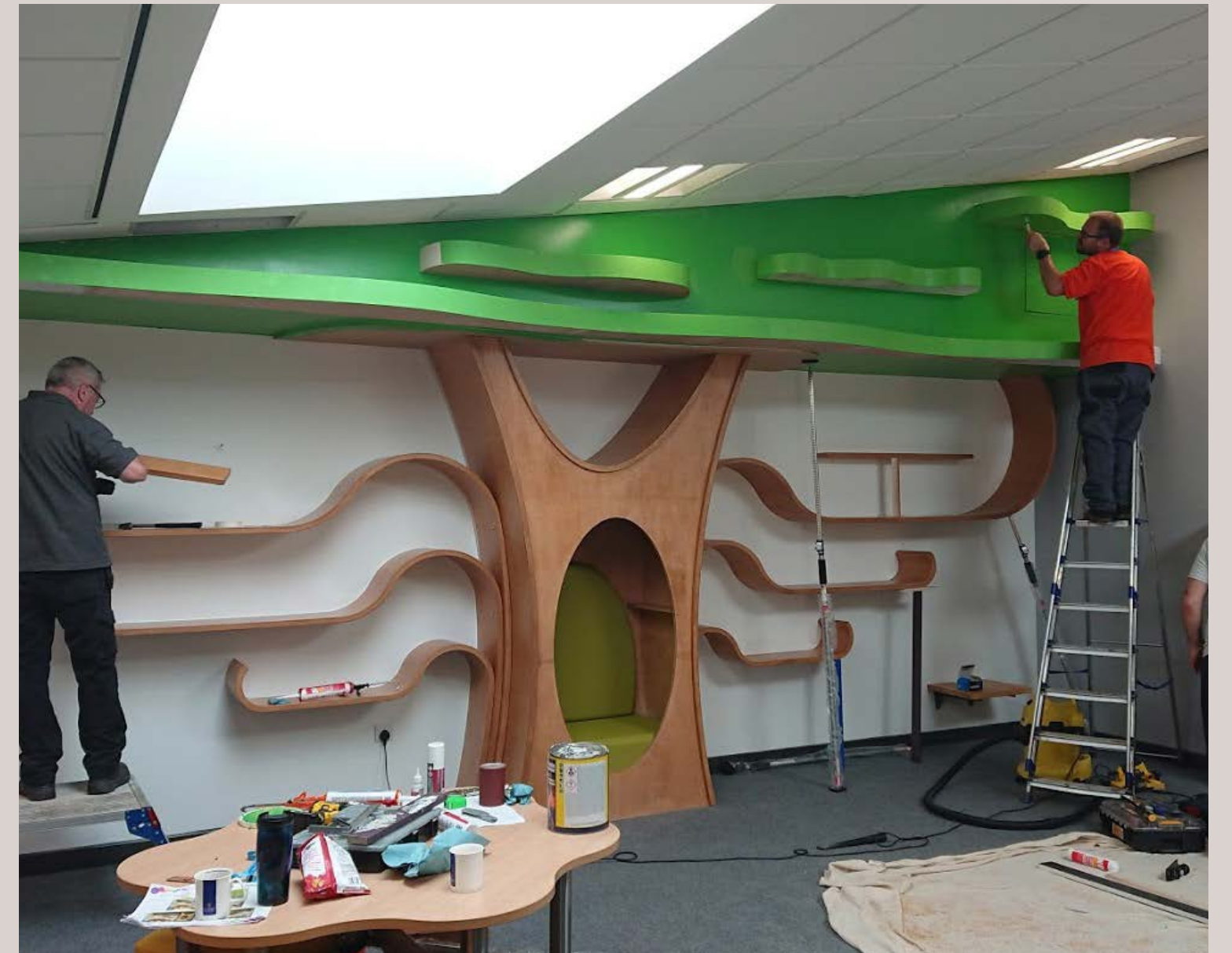
Part	Part Qty	Part Description	Part Qty	Part Description	Part Qty	Part Description	Part Qty	Part Description	Part Qty	Part Description	Part Qty	Part Description
18Beech_Bloc_1500_Side_R	1	Special panel SAW										
18Beech_Bloc_1500_Side_C	3	Special panel SAW										
18Beech_Bloc_1500_Side_L	1	Special panel SAW										
18Beech_Bloc_1500_Back_1275x144	4	Special panel SAW										
18Beech_Bloc_1500_Back_144	4	Special panel SAW										
18Beech_Bloc_Top_Side_144	4	Special panel SAW										
ToolBLOC_SHELF_644ASSEMBLED	16	Special panel SAW										
18Beech_9B_AIS_Side_CapAct1	1	Special panel ONC										
18Beech_9B_AIS_Side_CapBx1	1	Special panel ONC										
18Beech_9B_AIS_Side_ScribA_1496.4x71.4EARx2	2	Special panel SAW										
18Beech_Wedge_End_Panel	12	Special panel SAW										
18Beech_Wedge_Side_Panel	12	Special panel SAW										
18Beech_Wedge_Back	6	Special panel SAW										



INSTALLATION

Our trained Installation Team will assemble items in house and on site depending on type of furniture it is.

As a designer it benefits going out on site. It gives better understanding over the design and products.



THANK YOU!

I AM HAPPY TO UNSWER ANY QUESTIONS