

KB LOUNGE

RESTAURANT & COCKTAIL BAR

CUSTOMER:



ADDRESS:



INTERIOR DESIGN
PROPOSAL
REV A

Interior Designer
Sandra Sharma



KB LOUNGE RESTAURANT & COCKTAIL BAR

RESTAURANT FACADE



The KB Lounge signage features a sleek black background with a gold logo, emphasizing luxury and visibility.

The main sign displays the logo, phone number, and “Restaurant & Cocktail Bar” in a clean, modern style.

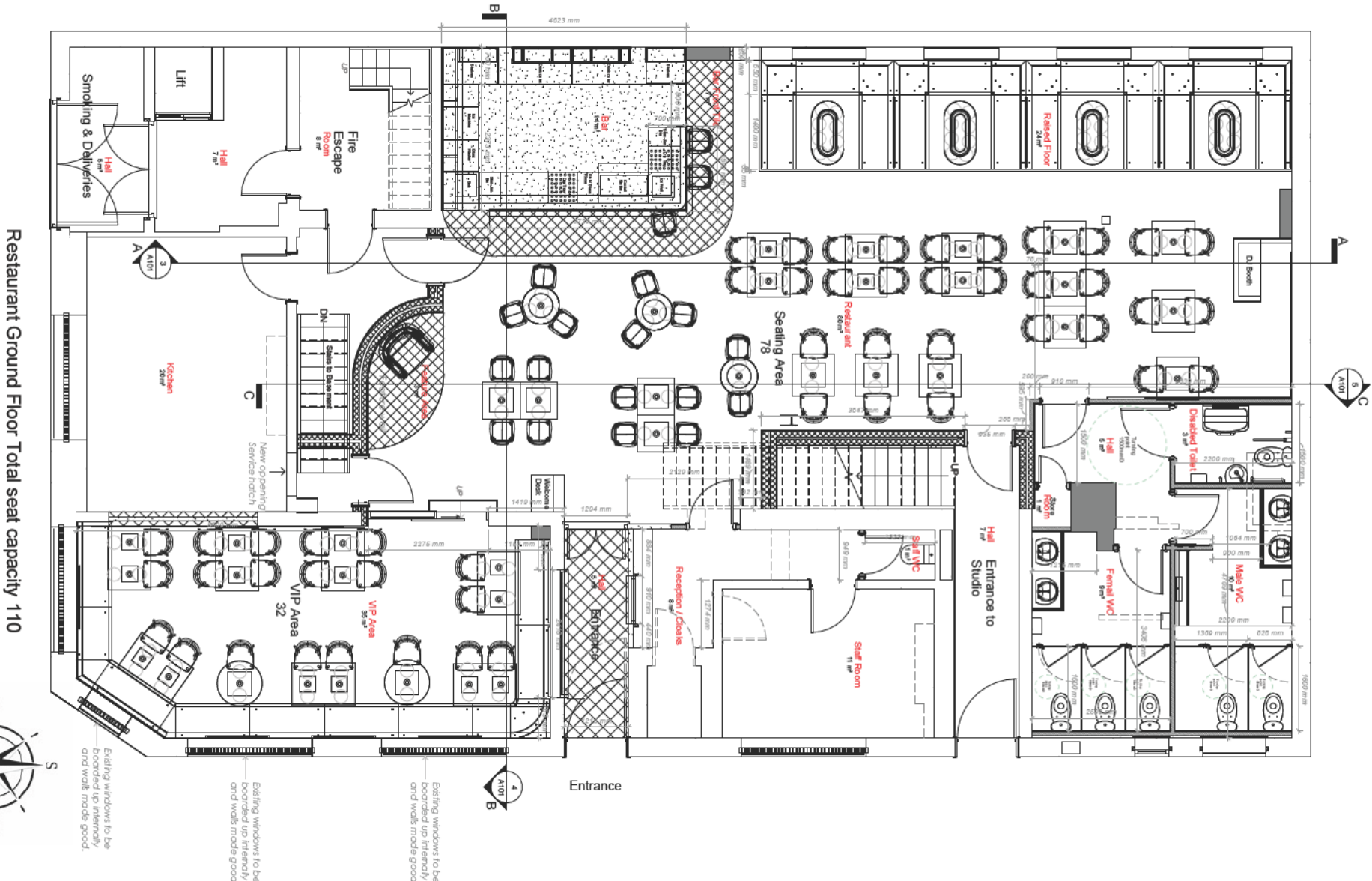
Side-hanging signs on both sides of the building mirror this design, ensuring the venue is easily identifiable from all directions.

The consistent use of gold on black ties the exterior signage together, creating a refined and cohesive brand presence.



KB LOUNGE INTERIOR

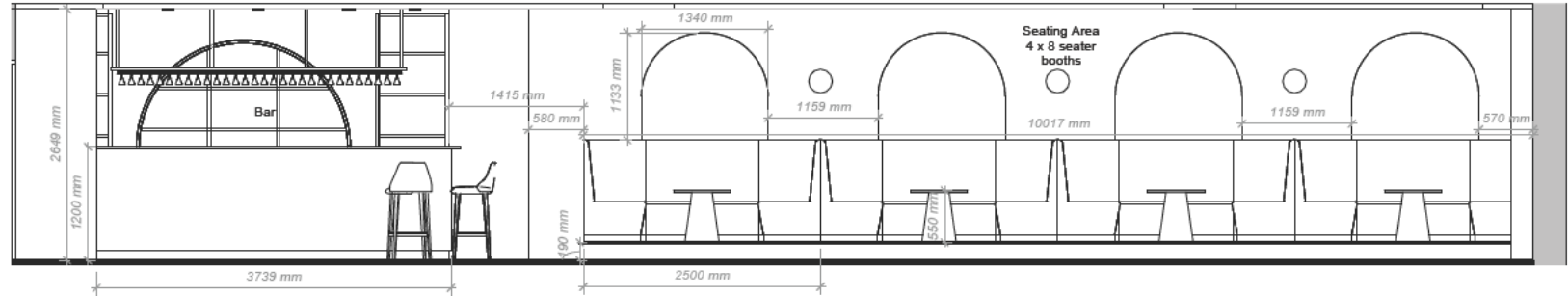
GROUND FLOOR FLOOR PLAN



Drawings not to scale - used only for presentation purpose.

KB LOUNGE INTERIOR

MAIN DINING HALL



SECTION A

Artificial Areca palms placed in the corners of booth seating seamlessly tie together with the arch-patterned wallpaper, creating a cohesive and inviting ambiance.



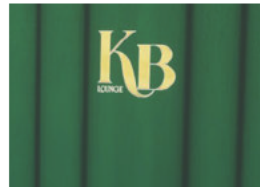
The Mood Light combines black and brass elements in a modern yet timeless design, perfect for adding refined elegance.



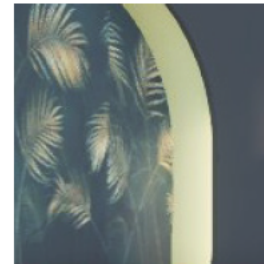
Oval Stone Coffee Table with Pedestal Chrome Base - Scratch Resistant - Black/ Gold Black/ Gold.



The booth seating is enhanced with embroidery of the brand's logo on rich green upholstery, adding a touch of elegance and reinforcing brand identity.



The accent wallpaper within the alcove arches showcases a rich green backdrop with palm designs, bringing a tropical theme that radiates sophistication.



The illuminated arches serve as a striking focal point, highlighting the space and casting a warm, inviting glow.

Drawings not to scale used - only for presentation purpose.

KB LOUNGE INTERIOR BAR AREA



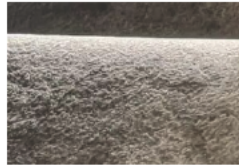
Green metro tiles framing the arched shelving offer a contemporary twist.



Marble effect laminate Table tops with gold edging.



Sleek metal frame with glass shelves, mirrored backs, and LED light strip.



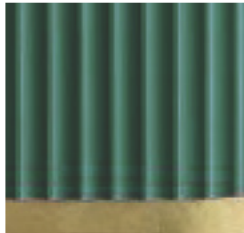
Textured stone effect wall covering adds a natural, rugged elegance to the space.



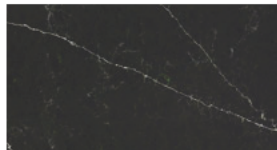
Translucent Stone illuminated arch shelving back.



Green and Fuchsia bar stools .



Bar Front - Ribbed paneling with Brass plinth.



Black quartz worktop marble effect.



LVT Glue down tile around the bar.

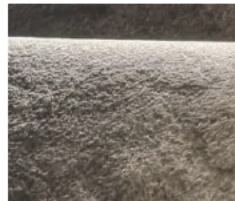


KB LOUNGE INTERIOR

PERFORMANCE AREA



The performance wall features painted wood slats that create distinct sections for the artificial plants and mirrors, adding depth and visual interest.



The DJ booth is covered in stone veneer, illuminated with undercounter LED strips, and prominently displays the KB logo on the front.



KB LOUNGE INTERIOR

FEATURE WALL

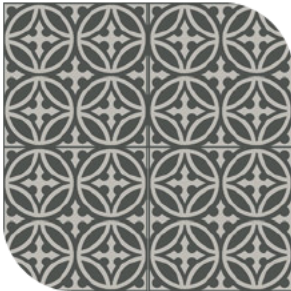


Featuring gold humming birds



A gold-framed cage chair with custom embroidered cushions creates an ideal photo backdrop, adding a touch of luxury and style to the feature wall.

The feature wall is adorned with artificial foliage panels accented by pink blossoms, creating a vibrant and lush display.



The feature wall area is defined by tiled flooring that forms a curved pattern, echoing the curve of the wall and enhancing the overall design cohesion.



KB LOUNGE INTERIOR

VIP ROOM



The VIP room features custom embroidered pillows in rich green and fuchsia velvet, each bearing the KB logo, adding a personalized touch of elegance.



blue velvet fluted booth seating, with LED lights running along the back, creating a stylish and inviting ambiance.



Large arched mirrors are incorporated to add depth to the room, continuing the arch motif from the main dining hall and enhancing the overall design cohesion.



Artificial Bougainvillea garlands are used to add visual interest and a touch of fuchsia color, highlighting and surrounding the KB logo.



A wall mural, designed to be reflected in the mirrors around the room, adds an artistic focal point and amplifies the sense of space.

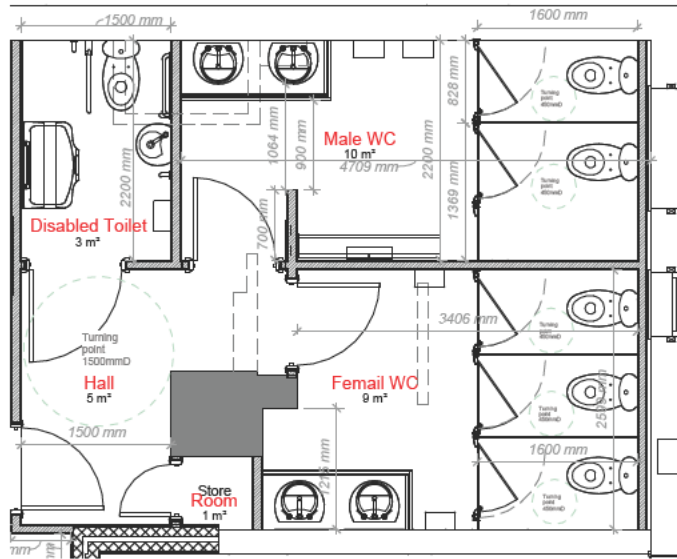
KB LOUNGE INTERIOR

TOILETS

TOILETS REQUIRED BASED ON THE SEATING CAPACITY

61-120 seats:
Male - 1 toilet, 2 urinals, 1 washbasin.
Female- 3 toilets, 2 washbasins.

121-240 seats:
Male- 2 toilets, 3 urinals, 2 washbasins.
Female- 4 toilets, 3 washbasins.



TOILETS LAYOUT

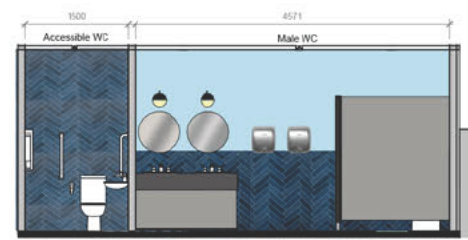


Toilet cubicles, vanity units and IPS Duct Panelling can be ordered custom made for easy installation.

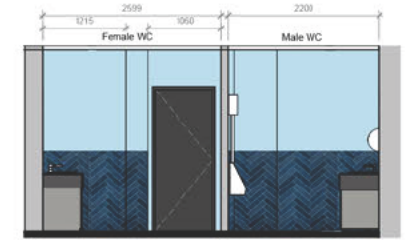
Blue herringbone tile effect PVC boards create a striking feature wall in the toilets, complemented by modern black and gold wall lights. The surrounding walls are painted in a soft sky blue.

Drawings not to scale - used only for presentation purpose.

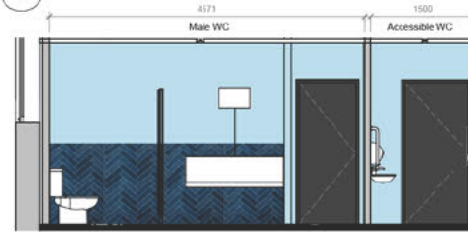
TOILETS



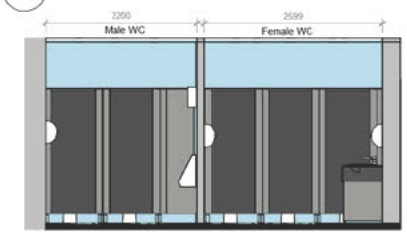
2 Toilet Section A1



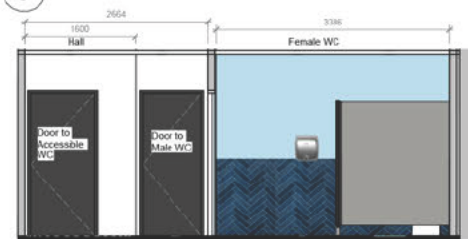
4 Toilet Section B1



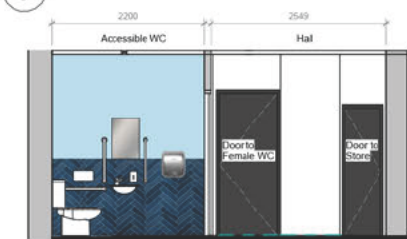
3 Toilet Section A2



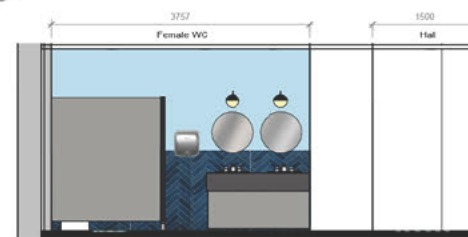
5 Toilet Section B2



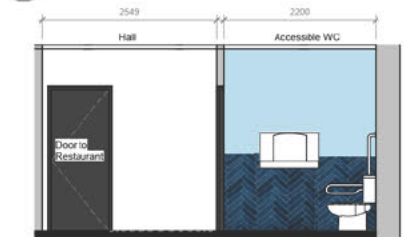
6 Toilet Section C1



8 Toilet Section D1



Toilet Section C2



9 Toilet Section D2



"Altro Walkway - Black VM20892 Safety Flooring is ideal for toilet areas for enhanced safety and durability. The flooring must be covered along the sides for a seamless, hygienic finish that prevents water buildup. Its slip-resistant properties make it ideal for wet environments."