



Schoology

Tech Exploratorium

ISTC 541.800



Carly Cooper



Outcomes

01

What is Schoology?

I can describe how Schoology is used by educators and students.

03

Drawbacks

I can identify areas of improvement for Schoology.

02

Features & Capabilities

I can identify benefits to using Schoology.

04

Instructional Use

I can explore examples of how Schoology can be implemented in an educational setting.

What is Schoology?

Schoology is a learning management system.

It allows educators and students the following capabilities:

- a place to house all curriculum material
- a place for students to turn in work (classwork, homework, etc.)
- a place for students to take assessments
- a place for teachers & students to communicate safely
- a place for students to interact and collaborate safely
- a place to communicate due dates and upcoming events

Features & Capabilities

The graphic consists of three overlapping window-like shapes. The top window is yellow with three colored circles (green, pink, purple) in the top right corner. The middle window is white with a yellow header and a purple circle in the top right corner. The bottom window is white with a yellow header and a purple circle in the top right corner. A white mouse cursor arrow points to the right edge of the bottom window. There are several colorful diamond shapes (teal, pink, yellow) scattered around the windows.

Instructional Tools - These allow an educator to easily differentiate instruction for students of differing abilities, allowing course material to be completed individually or as a group depending on preference of the educator/student.

Badges - Teachers can create customized badges for incentives and motivation. Badges are similar to trophies they might earn on video games or other social media games that students are familiar with.

Features & Capabilities

Coursework Submissions - The grading system allows an educator to comment, annotate, and grade an assignment without having to download and then upload the material.

Tests and Quizzes - Educators can create a variety of different types of questions for quizzes and tests. These tests and quizzes can include a wide variety of media as well, making it easy to personalize and differentiate assessments.

Features & Capabilities

Online Gradebook and Attendance - Schoology offers an automatic grading feature in which graded assignments/tests/quizzes can be automatically input into the gradebook, saving educators valuable time.

Standards and Outcomes Alignments - This feature allows teachers to easily align content, assessments, and rubrics to Common Core, State Standards, or custom learning outcomes.

Drawbacks

◆ Shared Device

For students living in the same household and sharing a device, no two accounts can be open at the same time on the same computer.

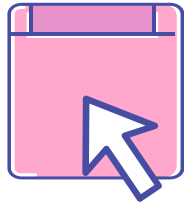
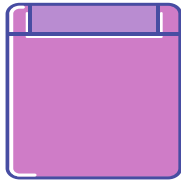
◆ Comments/Discussion Posts

Teachers do not have the ability to monitor student comments or discussion threads.

◆ Set-Up and Navigation of Interface

-Setting up Schoology “pages” can be time consuming at-first with the multiple options and capabilities offered within.

-The platform can be difficult to navigate for first-time users.



Instructional Use

Formal and Informal
Instruction

- Tests/Quizzes
 - Updates
 - Discussion
- Posts/Threads
- Interactive Brain Breaks
- Access to curriculum materials

Instructional Use

Formal and Informal Instruction

- Tests/Quizzes
 - Updates
- Discussion Posts/Threads
- Interactive Brain Breaks
- Access to curriculum materials