

THE OFFICIAL AFC FYLDE 2024/25 MATCHDAY PROGRAMME

THE COASTER

REMEMBRANCE SPECIAL



PRICE £3.00

VS GATESHEAD
9TH NOVEMBER
3PM KICK OFF



**HARRY
DAVIS**



Lease A Brand New Van

£0 Admin Fees[^]

Only At Vanarama.com



**Make the signing of the season
with Vanarama**



FREE 30-Day Returns*

FREE & Fast UK Delivery#

 **Trustpilot**

AUTORAMA UK LTD t/a Vanarama, registered in England and Wales (Reg. No. 05137709) registered offices: Maylands Avenue, Hemel Hempstead HP2 7DE, is authorised and regulated by the Financial Conduct Authority (Firm Ref. No. 630748). AUTORAMA UK LTD is part of the "Auto Trader Group", which includes Auto Trader Limited. AUTORAMA UK LTD is a credit broker and not a lender. We can introduce you to a limited group of lenders and their finance product. *We do not charge you a fee for introductions we make, but we will likely receive a commission payment from the lender if you decide to enter into an agreement with them. These fees and commissions do not influence the amount a customer pays. *Ts&Cs apply, Max 50 miles over the delivery miles and must be returned within 30 days. *Offers, service and delivery only available to UK Mainland.

AFC FYLDE DIRECTORY

MILL FARM SPORTS VILLAGE
CORONATION WAY WESHAM, PR43JZ

PRESIDENT:

DAI DAVIS

CHAIRMAN:

DAVID HAYTHORNTHWAITE

DIRECTOR OF FOOTBALL:

ALEX HUGHES

HEAD COACH:

KEVIN PHILLIPS

ASSISTANT HEAD COACH:

WESS BROWN

SPORTS THERAPIST:

NATASSIA WATERS

CHIEF OPERATING OFFICER:

PETE SUTTON

CLUB SECRETARY:

JACK TOMLINSON

COMMERCIAL MANAGER:

JONATHAN EIGHTEEN

MEDIA EXECUTIVE:

JOSH KNOWLES

FAN ENGAGEMENT OFFICER:

RHIANNON KEARNEY

CLUB PHOTOGRAPHER:

STEVE MCLELLAN

STADIUM ANNOUNCER:

LEE KENNEDY

FIXTURE SECRETARY:

PHIL HEALD

GROUND SAFETY MANAGER:

CAROLINE COX

IMPORTANT GROUND INFORMATION

WOULD ALL SUPPORTERS PLEASE REFRAIN FROM STANDING IN FRONT OF THE MAIN STAND SEATS AT ALL TIMES, AND WOULD PARENTS PLEASE NOT ALLOW THEIR CHILDREN TO RUN AROUND IN THE MAIN STAND AND SPOIL IT FOR THOSE WHO WISH TO WATCH THE GAME IN COMFORT.

We would also ask those of you who wish to stand to do so behind either goal, or to the sides of the main stand. Please respect the view for those seated in the main stand.

AFC Fylde also employ a complete no-smoking policy in the main stand and covered areas, refreshment bar, toilets etc. and we would ask supporters to please co-operate with this policy. Please be aware that the playing of transistor radios in the main stand area is also not permitted - except with an ear piece - this is a health & safety requirement!

CONTENTS



04 HEAD COACH'S NOTES

Kevin Phillips has his say ahead of today's game



12 THE OPPONENTS

Read up on today's visitors



23 MAIN INTERVIEW

Coasters Kit Man Phil Newman Reflects on his Military Days



24 ACADEMY NEWS

Have a read of how our Academy got on in the FA Youth Cup

32 NATIONAL LEAGUE FIXTURES

All of our 24/25 National League fixtures.



A man with a beard and short, styled hair, wearing a black long-sleeved tracksuit, stands with his arms crossed. He is looking off to the right side of the frame. The background is a blurred outdoor setting with a blue structure on the left and a brick building on the right. A thick red horizontal bar is positioned below the image, and a dark blue vertical bar with a red base is on the right edge of the page.

**“THE LADS WILL GIVE
EVERYTHING ONCE THEY
CROSS THAT WHITE LINE”**

KEVIN PHILLIPS

Hello and welcome back to Mill Farm for this afternoon's game against Gateshead in the Vanarama National League.

I'd like to give a warm welcome to Carl, his players and staff, and all the directors and supporters of Gateshead, and I hope you all have a safe journey to and from the Fylde coast this afternoon.

I'd like to firstly recognise the importance of today's game away from the field of play as we host our annual Remembrance fixture. It's a hugely important day within the football calendar and one everyone rightly respects and takes note of as we pay tribute to those who risked their lives for our futures.

It's a brilliant thing that football can come together to remember those we lost, and the lad's will all have poppies on the front of their shirts today which will prove to be a fitting tribute right across the football pyramid.

I hope both sets of supporters enjoy the tribute and the events which are taking place around Mill Farm this afternoon.

As for matters on the pitch, we know the importance of today's game. We've had two weeks to prepare for today after the performance against Altrincham and we know it has to be better in every department.

We've added some more faces into the group which is pleasing and as time goes on, we'll be looking to add to that.

The last couple of weeks of training has consisted of hard work, making sure the lads are fitter and stronger going into games and in particular the latter stages of games. I've said from day one that I want players to fight for the shirt and as a minimum, give 100% for the entire 90 minutes and that is the expectation for today and any game.

I'd like to once again thank our supporters for their continuous support. The defeat that we suffered last time out against Altrincham wasn't easy for any of us, and we have worked tirelessly over the past fortnight to right those wrongs and produce a performance today that we can all be proud of as a collective.

I urge you all to stick behind the group and keep being vocal with positivity from the terraces, and the lads will give everything once they cross that white line.

Enjoy the game,

Kev.





**“TRAINING HAS BEEN REALLY
IMPRESSIVE AND THE LADS
HAVE STEPPED UP”**

HARRY DAVIS

Hello and welcome back to Mill Farm for this afternoon's game against Gateshead.

I hope everyone connected with Gateshead has a safe journey to and from the Fylde coast this afternoon.

Today is always a special day within the football calendar as we host our annual remembrance fixture. It's a proud feeling to remember those who risked their lives for our futures and wearing the poppy on our shirts this afternoon is a fitting tribute.

In terms of the game itself, today is a big one for us.

We had a really productive two weeks after the disappointing defeat to Altrincham and we need to put that defeat to the back of our minds and bounce back in the fashion we know we're capable of.

We produced a really good performance at Boston a few weeks ago and we know we need to replicate that quality on a more regular basis.

Training has been really impressive and the lads have stepped up. We are expecting to see new faces and with that comes competition for places which brings the best out of players, and we need that now more than ever.

As the new lad's bed in and the squad adjusts, we urge all of our brilliant supporters to stick with us through the good results and the bad.

We know within the dressing room and entire football club that we have the quality to turn our start to the campaign around, but we need your support from the terraces to help us do it.

Keep the faith, and we will do everything we can to send you all home happy this afternoon.

Enjoy the game,

Harry.





Business Solutions Made Simple

Why choose Switch365?

- Dedicated Account Managers
- Multi-site Specialist
- Industry Experts
- Relationships with UK Leading Suppliers
- Online quote in less than 60 seconds

www.switch365.com

0345 365 4 365



THE NEW ALL-ELECTRIC MINI COOPER.



BIG LOVE.



TURNING A NEW CORNER, GO-KART STYLE.

New MINI, new era, same iconic silhouette, same go-kart feeling; just a little refined and jazzed up. Our fifth generation MINI is modern and simplistic, embodying maximum driving pleasure and minimum footprint, and incorporating more innovative technology than ever before.

With a fully charged battery the all-electric MINI Cooper SE offers an electrifying 218hp and up to 250 miles* of range. Ready to discover more or book a test drive^?

Bowker Blackburn

Trident Park, Blackburn, BB1 3NU
01254 274333
www.bowkerblackburnmini.co.uk

Bowker Preston

Channel Way, Preston, PR2 2YA
01772 761234
www.bowkerprestonmini.co.uk



All-electric MINI Cooper SE Sport: Electric Consumption (WLTP combined): 4.1 - 4.4 miles / kWh; CO2-Emissions (WLTP combined): 0 g/km; Electric Range (WLTP combined): 234 - 250 miles.

^aFigures are for comparison purposes and may not reflect real life driving results which depend on a number of factors including the starting charge of the battery, accessories fitted (post registration), variations in weather, driving styles and vehicle load. They were obtained after the battery had been fully charged. The all-electric MINI Countryman is a battery electric vehicle requiring mains electricity for charging. The electric range was determined according to a new test (WLTP). Only compare fuel consumption, CO2 and electric range figures with other cars tested to the same technical procedure. [^]Test drives subject to applicant status and availability.



WEDNESDAY 23RD MATCH BOSTON UNITED 1

1

AFC Fylde picked up their first away win of the campaign as they came from behind to beat Boston United.

Second half goals from Corey Whelan and Adam Long proved the difference despite Pemi Aderoju's opener on the stroke of half time.

The first half was mostly a cagey and scrappy affair with neither side having many chances.

Tyler Roberts and Tom Leak were both booked respectively for late challenges before the quarter of the hour mark.

The first chance of the game fell to Boston's Pemi Aderoju who headed wide from close range.

Fylde began to grab a foothold in the game with Ustabasi forcing a save from Aidan Stone before Owen Evans cut inside brilliantly before seeing his left-footed effort block.

As the half progressed into the latter stages, Richardson made two great saves but as his second strong handed save went for a Boston corner, the host's took full advantage.

Aderoju rose highest and headed home for six yards to score on the stroke of half time, leaving the Coasters behind at the interval.

The second half started in much better fashion for the Coasters as Corey Whelan drew Fylde level. The skipper met Joe Riley's corner and volleyed past Stone to draw level.

And within five minutes, the Coasters were ahead. A short free kick routine worked its way to Gavin Massey on the left and he whipped a brilliant ball in



OCTOBER 2024 REPLAY AFC FYLDE 2



where Adam Long was there to send a bullet header past Aidan Stone to put the Coasters 2-1 to the good.

Joe Riley went close to adding a third but his free-kick effort crept just wide of Stone's near post.

Lincoln McFayden then also had an opportunity to make it three as Ethan Mitchell did brilliantly to cut the ball back but the defender sliced his effort over and wide.

Boston continued to pile pressure on as Fylde managed the game well and took the sting out of a tightly contested affair.

The officials added four minutes as the Coasters defence were tested, but Phillips' men stood strong and claimed their first win under the new Head Coach.

AFC Fylde: Richardson, Davis, Whelan (C), Long, Evans, McFayden, Mitchell, Riley, Massey (Jolley 85) Roberts, Ustabasi.

Subs not Used: Winterbottom, Gamble, Zanzala, Haughton, Ormerod, O'Kane.

2



THE OPPONENTS

GATESHEAD FOOTBALL CLUB

Nickname: The Heed
Manager: Carl Magnay
Ground: Gateshead International Stadium
Capacity: 11,800
Last season: 6th in the National League.
FA Trophy Winners



National League action returns to Mill Farm this week with the visit of Gateshead.

The visitors are under the charge of manager Carl Magnay after being appointed at the start of October.

Magnay has had two spells at Gateshead as a player, making 77 appearances across two years after joining in July 2012, including the Conference Play-off Final in 2014 at Wembley.

He became the only player to appear twice at Wembley for the Heed during his second spell when he started the FA Trophy Final in 2023.

He retired later on that year and joined the club's coaching staff, before taking over himself following the departure of Rob Elliot.

The Heed currently sit 4th in the Vanarama National League.

Key Three:
Owen Oseni (Forward)



The 21-year-old joined Gateshead in July after leaving Derby County at the end of his contract. He was signed by the Rams Academy after coming through the ranks of Waterford in his native Ireland.

Oseni spent two years at Derby with loan spells at Nuneaton and Rushall Olympic. His loan in



the National League North with the Pics saw him score eight goals in just 15 games.

He has enjoyed a good start to his Gateshead career, providing six goals and one assist in 15 games so far this season.

Callum Whelan (Midfielder)

Beginning his career at Manchester United, Whelan joined the Red Devils at the age of nine and spent 11 years at Carrington.



After leaving United, Whelan went on to play for Port Vale, Watford, Oldham and Solihull Moors.

He originally joined the Heed on loan from the Midlands club for the second half of 2023.

After impressing in his loan spell, Whelan joined permanently that summer, signing a two year deal, and having missed the first half of the season through injury, was a key part of the side who won the FA Trophy last season.

This season, he has scored three goals and had two assists in 15 games.

Mark Beck (Forward)

The 30-year-old is currently on loan at Gateshead, having joined on a six month deal

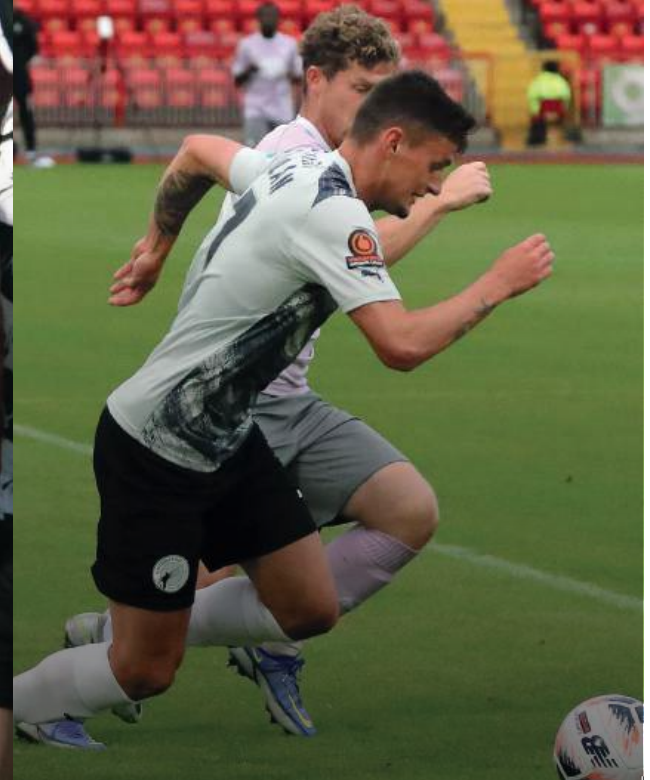


from Solihull Moors in the summer.

The Sunderland born striker came through the ranks at Carlisle and has represented clubs such as Yeovil Town, Darlington and Harrogate amongst others.

He had a spell with Falkirk in Scotland and has also played for the National Side three times at u-19 level.

Beck played against Gateshead in the FA Trophy final at Wembley last season, scoring twice for Solihull, as well as converting his penalty in the shootout.





THE SQUAD

01 TIERNAN BROOKS
02 ROBBIE TINKLER
03 BRANDON HAUNSTRUP
04 JACOB BUTTERFIELD
05 KENTON RICHARDSON
07 TOM ALLAN
08 REGAN BOOTY
09 OWEN OSENI
10 CALLUM WHELAN
11 BEN WORMAN
12 KAIN ADOM
14 JEAN BELEHOUAN
15 RYAN CARR
16 BEN RADCLIFFE
17 MARK BECK

18 JOE GRAYSON
19 LUKE HANNANT
21 WILL CONSTANTIN
22 GREG OLLEY (C)
23 TYRELLE NEWTON
27 JOSH HOME
30 OLLIE BASEY
34 CHARLIE COLKETT
40 HARRY MOSS
45 JOVAN MALCOLM
46 DAN JONES

ON THE SPOT

WITH LINCOLN MCFAYDEN

1. **What's your nickname?**
Linc
2. **Who was your first football team as a child?**
Eccleston
3. **Who was your idol growing up?**
Messi, or Patrice Evra for Left Back
4. **What is your favourite holiday destination?**
Rhodes, Greece
5. **Who is your closest mate in the dressing room?**
Byrce Hosannah
6. **Who is the funniest in the dressing room?**
Luke Brennan
7. **Who has the worst clothes in the dressing room?**
Ben Winterbottom
8. **What is your favourite series?**
Snowfall or Power
9. **What would your job be if you weren't a footballer?**
Property or Business Owner
10. **What football team did you support growing up?**
Manchester United



UCFB

UNIVERSITY CAMPUS OF FOOTBALL BUSINESS

Kick off your career in the sports industry

Turn your passion for football into a career with the **University Campus of Football Business** where you can study a wide range of courses with access to **iconic stadiums** and **global summits**.

Over 90%* of UCFB graduates **find full-time employment within 6 months** of graduating with **two thirds** of those working in football and sport

* UCFB internal Graduate Census undertaken 6-9 months after course completion (45% response rate)



Premier League



EFL

UCFB alumni have worked in each of the **20 Premier League clubs** and **over 50 of the 72 EFL clubs**



The course has been exceptional for learning so many skills within the industry. The lecturers and module leaders have all really guided me on my journey, and I wouldn't be where I am now without the help that UCFB has given me.

Rio Rosenberg

BA (Hons) Football Business and Media student and Women's Content Creator at Chelsea FC



Scan here for more information and how to apply or visit **UCFB.ac.uk**





QUIZ

1

Who scored the final goal in the home win over Aldershot?

Who scored a brace in our 4-0 win over Gateshead last season?

2

3

Where did Carl Magnay leave to become Gateshead Head Coach?

What colours are on the Gateshead home kit?

4

5

What sculpture is on the Gateshead badge?

Who did AFC Fylde face last time out?

6

7

Who do AFC Fylde face on the last game of the season?

Along with Charlie Jolley, who also scored a brace against Aldershot?

8

9

Who was recently appointed AFC Fylde's new assistant Head Coach?

Who did Carl Magnay replace as Gateshead Head Coach?

10

TIME



1. Charlie Jolley 2. Nick Haughton 3. Carlisle United
4. Black and White 5. Angel of the North 6. Altrincham 7. Barnet
8. Gavin Massey 9. Wess Brown 10. Rob Elliot

The Football Foundation is the Premier League, The FA and the Government's charity.

We award grants and work with partners to deliver outstanding grassroots football facilities across England.

Search **Football Foundation** to find out more.



GREAT PLACES TO PLAY





Official benchwear provider



here for **all** of your
teamwear needs



Enquiries

sales@newbalanceteam.co.uk

Web

www.newbalanceteam.co.uk





**“FOOTBALL REMINDS ME OF
BEING BACK IN THE FORCES
WHEN WE’RE ALL ONE UNIT
AND ONE FAMILY”**

PHIL NEWHAM

To commemorate our special Remembrance Day fixture, we chose a special interviewee for this week's matchday programme.

AFC Fylde Kit Manager Phil Newham sat down with 'The Coaster' to discuss his days serving in the military, and what the upcoming Remembrance Day means to him.

After joining the forces straight from school at the age of 16, Newham completed nine years in the services before moving onto new pastures.

He said: "I started off as a chef for two years and then progressed onto being a driver which I did for nearly eight years.

I absolutely loved it. It was like a second home with a really close-knit family and I enjoyed every minute that I was there.

"I was pretty homesick when I first started but my parents made me stick it out and I can't thank them enough for helping me through it because it's made me the decent person that I am today."

Over the long period, Newham saw many different places and served in plenty of different operations.

He continued: "In the time I was there as a driver, I was in Afghanistan and Iraq, completing six months in each respectively. I've also been in Oman and the Falklands, so I've seen a bit of action during my time there.

"The main one would be Afghanistan, doing aircraft refuelling, passenger transfers, convoys and everyday sort of stuff that the military support the army with."

Now in his role at Kit Manager at AFC Fylde, Phil recognises the importance of Remembrance Day more than most.

He added: "After serving in Afghan and Iraq, I personally have lost a couple of friends throughout the war zones so it means an awful lot to me to be able to pay my respects to them.

"We all know the way the world is going at the moment so Remembrance Day will be massive and it's a great way that the football community can pay respect to the things the military do every single day."

"Football reminds me of being back in the forces when we're all one unit and one family".

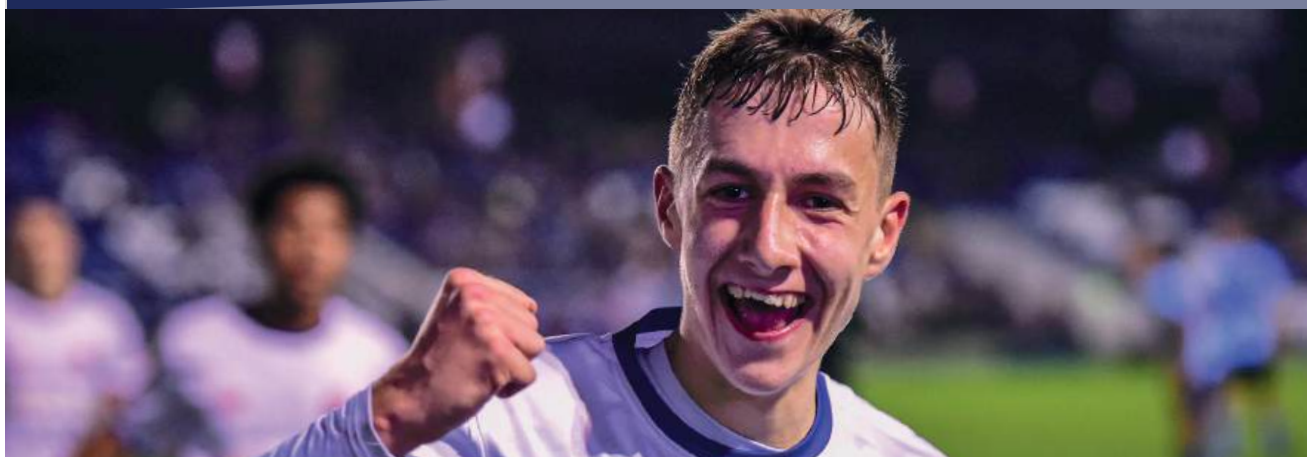
"It has a very similar feeling when we're all one and we're almost living in each other's pockets day in, day out when we're all together working hard so it's nice to be back in that environment in this role now."

Finally, ahead of today's fixture against Gateshead, Newham is filled with pride as he will be ensuring the lads' shirts are bearing a Remembrance Poppy and they cross the white line.

He concluded: "It's a massive thing for me to be able to do.

"It means so much to myself and my colleagues that I get to do something on behalf of the football community and seeing the lads wear the poppies will be special knowing I've put my little stamp on the shirts and the day."

AFC FYLDE ACADEMY



AFC Fylde's Academy progressed into the second round of the Emirates FA Youth Cup with a 3-0 win over Doncaster Rovers' Academy on Monday night.

A double from captain Stan Holder and a late finish from Paolo Mariani proved the difference as the Coasters made the most of home advantage to win their third game in this year's competition.

It was a tight and cagey first half affair with very little to separate the two sides.

Rhomani Murray went close to opening the scoring with a header before Koby Palmer had a chance but his effort was held by the Rovers' keeper.

Just past the half hour mark, Fylde found the breakthrough. A brilliant and pacy run from Joleon Moore down the left saw the winger enter the area, only to be brought down giving the referee no option than to point to the spot.

Captain Stan Holder stepped up and calmly slotted the ball into the bottom corner to break the deadlock, giving Fylde a narrow half-time lead.

The Coasters started the second half the much better side, piling the pressure on the young Rovers defence.

Alex Frost was inches away from doubling the Coasters' lead with a stunning effort from 35

yards out which landed just onto the roof of the net on the hour mark.

But just after 70 minutes, Fylde did have their second and it was Stan Holder once again. Koby Palmer showed some excellent skill in the middle of the park to work the ball wide before



a cross from the left found Holder on the edge who picked out the top corner beautifully to double the Coasters' lead.

With seconds left on the clock, the Coasters sealed it as substitute Paolo Mariani slotted past the Rovers keeper to make it three and put the Coasters into the second round.

AFC Fylde: Clark, Hailwood, Meadowcroft, Coar, Oliviera (Green 86'), Palmer (Jackson 90+3), Holder, Forst, McKay (Johnson 90+3'), Da Silva (Vika 73'), Moore (Mariani 86')

Subs not Used: Dodgson, Stewart.

INTRODUCING OUR BRAND NEW **COASTERS** LOUNGE

A **VIP** 'PLAY & WATCH' EXPERIENCE FOR LOCAL GRASSROOT TEAMS!

PACKAGE INCLUDES:

- PIE OF THE DAY WITH CHIPS, PEAS AND GRAVY
- MATCHDAY TICKET INCLUDED
- ONE HOUR IN YOUR OWN 7-A-SIDE ASTRO CAGE
- MEET & GREET WITH A FIRST-TEAM PLAYER
- TAKE A PHOTO WITH SYD THE SEAGULL
- RESERVED TABLE IN OUR LOUNGE FOR ALL GUESTS
- LIVE SPORT ON TV
- FREE PARKING
- FREE GOODIE BAG FOR EVERY CHILD WORTH £19 RRP



SITUATED IN OUR FSEC FACILITY, TWO MINUTES AWAY FROM MILL FARM STADIUM!

**ALL FOR
£10 PER
PLAYER &
COACHES**

ADDITIONAL ADULT TICKETS FOR PARENTS ARE £30 WHICH INCLUDES MEAL & MATCH TICKET



SPACES ARE LIMITED PER GAME
SO TO SECURE YOUR PLACE AND
FOR MORE INFORMATION,
CONTACT

PETER.SUTTON@AFCFYLDE.CO.UK
OR CALL 01772 682593.



FLASHBACK

With it being our annual remembrance fixture here at Mill Farm this afternoon, this week's flashback fixture will be a special one as we reflect on a very important football fixture on Christmas Day, 1914.



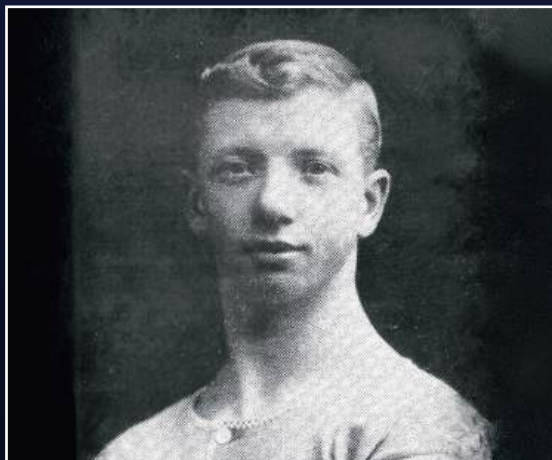
What has famously become known as 'The Christmas Truce' was a series of unofficial ceasefires along the Western Front around Christmas in 1914. For a short time the fighting stopped.

It began when German soldiers started to sing Christmas carols. British troops responded and gradually both sets of soldiers ventured into No Man's Land, the ground between the British trenches and the German ones, where they exchanged food and souvenirs.

They were even friendly enough to play games of football together. One in particular has often been written and spoken about. In 2008, at the spot in the French village of Frelinghien where their regimental ancestors came out of their trenches to kick a ball around on Christmas Day in 1914, men from the 1st Battalion, The Royal Welsh Fusiliers, played a match against the German Battalion 371.

A number of professional footballers lost their lives in the War. Edwin Latherton, known as 'Pinky', had been capped for England against Wales

and Ireland. He was only 5'5" tall but played as a midfielder for Blackburn Rovers and helped them to win the League title twice. His career ended



when he was killed while serving with the Royal Field Artillery at Passchendaele.

'The Christmas Truce' was seen as a symbolic moment of peace and humanity in one of the most violent events of modern history.

Lease A Brand New Van

£0 Admin Fees[^]

Only At Vanarama.com



**Make the signing of the season
with Vanarama**



FREE 30-Day Returns*

FREE & Fast UK Delivery*




AUTORAMA UK LTD t/a Vanarama, registered in England and Wales (Reg. No. 05137709) registered offices: Maylands Avenue, Hemel Hempstead HP2 7DE, is authorised and regulated by the Financial Conduct Authority (Firm Ref. No. 630748). AUTORAMA UK LTD is part of the "Auto Trader Group", which includes Auto Trader Limited. AUTORAMA UK LTD is a credit broker and not a lender. We can introduce you to a limited group of lenders and their finance product. *We do not charge you a fee for introductions we make, but we will likely receive a commission payment from the lender if you decide to enter into an agreement with them. These fees and commissions do not influence the amount a customer pays. *Ts&Cs apply, Max 50 miles over the delivery miles and must be returned within 30 days. *Offers, service and delivery only available to UK Mainland.

MANAGEMENT AND PLAYERS










MANAGEMENT

	CHRIS & ARCHIE KELLY		AVAILABLE
HC	KEVIN PHILLIPS	AHC	WESS BROWN

GOALKEEPERS

	THE AFC SUPPORTER'S GROUP		AVAILABLE		GILLIFER (GILLIAN SIMPSON AND JENNIFER KENYON)
1	THEO RICHARDSON	37	EWAN DODGSON	31	BEN WINTERBOTTOM

DEFENDERS

	KEPAK		JACK & JOSEPH GOTH		JEAN & TONY HALL
23	BRYCE HOSANNAH	4	HARRY DAVIS	5	EMEKA OBI
	switch 365		PHIL AND HILARY		TECSEAL
6	ADAM LONG	3	OWEN EVANS	28	JESSE HAILWOOD
	AVAILABLE		SMITHY		AVAILABLE
18	LINCOLN MCFAYDEN	2	PATRICK GAMBLE	14	MAX BARDELL

ER SPONSORSHIPS 2024/25

MIDFIELDERS

	ANNE & ROD SLATER		THE AFC SUPPORTER'S GROUP		THE TARTAN ARMY
22	JACK MORRIS	40	JOE RILEY	10	NICK HAUGHTON
			AVAILABLE		
17	COREY WHEALAN	19	LUKE BRENNAN	8	ETHAN MITCHELL
	GOODIER FAMILY		AVAILABLE		ANNE & ROD SLATER
34	TAELOR O'KANE	21	TYLER ROBERTS	20	GAVIN MASSEY

STRIKERS

	THE TARTAN ARMY		MICK THRELFALL		
29	DANNY ORMEROD	7	CHARLIE JOLLEY	9	OFFRANDE ZANAZALA
	JOSHUA JONES				
11	JON USTABASI				

**SPONSOR YOUR AFC FYLDE FAVOURITE
FOR THE 24/25 SEASON**

CALL 01772 598 855 OR EMAIL jonathan.eighteen@afcfylde.co.uk

PLAYER STATISTICS

24/25

NO.	SURNAME	FORENAME	STARTS	USED SUB	APPEARANCES	UNUSED SUBS	GOALS	ASSISTS
1	RICHARDSON	THEO	5	0	5	12	0	0
2	GAMBLE	PATRICK	7	4	11	4	0	0
3	EVANS	OWEN	13	0	13	3	0	0
4	DAVIS	HARRY	7	1	8	4	0	0
5	OBI	EMEKA	3	4	7	6	0	0
6	LONG	ADAM	16	0	16	0	1	1
7	JOLLEY	CHARLIE	8	8	16	1	2	2
8	MITCHELL	ETHAN	16	1	17	0	0	2
9	ZANZALA	OFFRANDE	4	9	13	2	0	0
10	HAUGHTON	NICK	15	1	16	1	11	3
11	USTABASI	JONATHAN	13	2	15	0	1	1
17	WHELAN	COREY	17	0	17	0	1	0
18	MCFAYDEN	LINCOLN	4	2	6	0	0	1
19	BRENNAN	LUKE	1	3	4	2	0	0
20	MASSEY	GAVIN	9	3	12	0	2	1
21	ROBERTS	TYLER	3	5	8	1	2	0
22	MORRIS	JACK	0	0	0	1	0	0
23	HOSANNAH	BRYCE	12	2	14	0	0	1
28	HAILWOOD	JESSE	0	0	0	4	0	0
29	ORMEROD	DANNY	6	10	16	1	0	0
31	WINTERBOTTOM	BEN	12	0	12	5	0	0
34	O'KANE	TAELORE	2	11	13	3	0	1
40	RILEY	JOE	14	3	17	0	1	3

TODAY'S MATCHDAY SPONSORS



REWARDS PLUS

NOVEMBER, DECEMBER 2024
AND JANUARY 2025

For all our latest deals or to take advantage of online ordering, go to
www.hbclark.co.uk

FIXTURES 24/25

	H/A	DATE	COMPETITION	OPPOSITION	ATTENDANCE	REFEREE	SCORE
AUGUST	H	SAT 10	National League	SOLI HULL MOORS	1,090	Elliot Bell	3-2
	A	SAT 17	National League	EASTLEIGH	1,820	Jason Richardson	4-2
	A	TUES 20	National League	OLDHAM ATHLETIC	5,682	William Davis	1-1
	H	SAT 24	National League	MAIDENHEAD UNITED	1,005	Ben Wyatt	0-0
	A	MON 26	National League	WEALDSTONE	1,325	Declan O'Shea	1-0
SEPTEMBER	H	SAT 7	National League	YEOVIL TOWN	1,305	James Bancroft	3-4
	A	TUES 10	National League	FOREST GREEN ROVERS	1,249	Richard Eley	3-0
	A	SAT 14	National League	YORK CITY	5,038	THOMAS PARSONS	3-0
	H	TUE 17	National League	SOUTHEND	1,088	Dale Bains	2-1
	H	SAT 21	National League	WOKING	1,108	Zac Kennard-Kettle	1-1
OCTOBER	H	TUES 24	National League	TAMWORTH	942	Steven Copeland	1-2
	A	SAT 28	National League	BARNET	2,432	Andrew Miller	2-0
	H	SAT 5	National League	ALDERSHOT TOWN	1,147	Elliot Bell	5-2
	H	SAT 12	FA CUP 4QR	ROCHDALE	1,846	Jamie O'Connor	1-4
	A	SAT 19	National League	DAGENHAM & REDBRIDGE	1,312	Paul Johnson	4-0
NOVEMBER	A	TUES 22	National League	BOSTON UNITED	1,529	Robert Massey-Ellis	1-2
	H	SAT 26	National League	ALTRINCHAM	1,392	Matt Corlett	0-5
	H	SAT 9	National League	GATESHEAD			
	A	SAT 16	National League	BRAINTREE TOWN			
	H	SAT 23	National League	EBBSFLEET UNITED			
DECEMBER	A	TUES 26	National League	HARTLEPOOL UNITED			
	A	SAT 30	National League	SUTTON UNITED			
	H	SAT 14	National League	EASTLEIGH			
	A	SAT 21	National League	SOLI HULL MOORS			
	H	THUR 26	National League	ROCHDALE			
JANUARY	A	WED 1	National League	FC HALIFAX TOWN			
	H	SAT 11	National League	SUTTON UNITED			
	H	TUES 14	National League	OLDHAM ATHLETIC			
	A	SAT 18	National League	MAIDENHEAD UNITED			
	H	SAT 25	National League	WEALDSTONE			
FEBRUARY	A	SAT 1	National League	SOUTHEND UNITED			
	A	SAT 8	National League	ALDERSHOT TOWN			
	H	SAT 15	National League	DAGENHAM & REDBRIDGE			
	H	TUES 18	National League	BOSTON UNITED			
	A	SAT 22	National League	ALTRINCHAM			
MARCH	A	SAT 1	National League	GATESHEAD			
	H	TUES 4	National League	HARTLEPOOL UNITED			
	H	SAT 8	National League	BRAINTREE TOWN			
	A	SAT 15	National League	EBBSFLEET UNITED			
	H	SAT 22	National League	FOREST GREEN ROVERS			
APRIL	A	SAT 29	National League	YEOVIL TOWN			
	H	SAT 5	National League	YORK CITY			
	A	SAT 12	National League	WOKING			
	H	FRI 18	National League	HALIFAX TOWN			
	A	MON 21	National League	ROCHDALE			
MAY	A	SAT 26	National League	TAMWORTH			
	H	MON 5	National League	BARNET			

Roman Heights

3 & 4 bedroom homes

**Seddon
Homes**
.co.uk



SPECIAL INCENTIVES AVAILABLE*

Marketing Suite open Thursday to Monday, 10am - 5pm

☎ 01253 599 536

✉ romanheights@seddonhomes.co.uk



*Offers exclusive to Roman Heights, T&C's apply. Speak to our Sales Advisor for more information.

**A Family Run
Smokehouse,
Pub and Grill**



PUB & GRILL

**Less than a mile
from Mill Farm
towards the M55**



www.henrys-smokehouse.co.uk

07738 243 271



**SURPRISE YOURSELF
IT'S BETTER THAN YOU THINK!**



@ FOLLOW US @RUSTLERSUK



GRANARY FIELDS

Tithebarn Street, Poulton-le-Fylde



2 - 5 bedroom homes

Marketing Suite Open

Thursday - Monday - 11am - 4pm

07808 910704 | info@baxterltd.co.uk | baxterhomes.co.uk

Baxterhomes▲

COASTERS IN THE COMMUNITY



Everyone at both AFC Fylde Community Foundation and AFC Fylde will pay their respects throughout the matchday against Gateshead – the day before Remembrance Sunday.

The Foundation's long-standing and ever-present partnership with Weeton Barracks will be on full show throughout the day as we want to celebrate all the good work they do at the same time.

The Coasters are offering all current and ex-service personnel tickets for just £5, anywhere in the ground, to come along and pay tribute.

As always at Mill Farm for our Remembrance fixture, annual arrangements will be taking place. The Last Post will be played ahead of kick off, whilst the players will be wearing poppy-engraved shirts throughout the game.

Ahead of kick off, ex-servicemen past and present will also produce an on-pitch parade.

The Foundation's very own former military personnel, Lee Geraghty, said; "Remembrance Day fixture is always one of the most important matchdays on the calendar because it reminds people of the sacrifices that were made so we could be here today."

Lee, our Armed Forces Support Co-ordinator, provides one-to-one support for Veteran's and also runs three monthly group sessions which take place all across Fylde such as breakfast clubs at Mill Farm or Toby Carvery Salters Wharf and a Walk and Talk session at Fairhaven Lake.

After serving in the military for over 20 years, Lee believes: "Acknowledging Veteran's reminds them of why they do what they do. Seeing the country come together to recognize the efforts of those all those years ago makes you realise that your own efforts and everyone else's will always be valued."

If you're a current or former member of service personnel please do not hesitate to contact for support: lee.geraghty@afcfylde.co.uk.

THE ARMY RESERVE IS RECRUITING NOW

GET IN ON THE ACTION

Your local Army Reserve Infantry Battalion is recruiting soldiers and officers across the North West of England.

Earn a second income, whilst learning new skills, making the most of your spare time and being part of something bigger.

IN YOUR AREA

4th Battalion The Duke of Lancaster's Regiment (4 LANCS) is your local Infantry unit, with locations in Blackpool, and across the region. Your nearest centre is on Parkinson Way, FY4 2AZ.

WANT TO FIND OUT MORE?

For an honest and open conversation to see whether the Army Reserve is for you, get in touch on the number below, or use your smartphone camera to scan the QR code.

SEARCH

4 LANCS NEAR ME



4TH BATTALION
THE DUKE OF LANCASTER'S REGIMENT
CALL 07973705802



EARN MORE | LEARN MORE | DO MORE | BE MORE

WOMENS UPDATE



AFC Fylde Women jumped up to ninth in the FA Women's Division One North table with a 1-0 win over Doncaster Rovers Belles.

A 90th minute winner from starlet Karri Chan proved the difference as Fylde made it back-to-back wins following their dominant victory against Darlington in the FA Cup.

There was a boost in the early team news as Iszy Binks returned to the starting XI.

And it was a quick start from the whites with Binks taking a free kick within the opening seconds which strayed just wide for a goal kick.

Captain Kelsh-Ridge had a great opportunity as the quarter of an hour mark passed, but her strike rose just over the bar.

Despite the constant Fylde pressure, the scores remained goalless as the half time whistle blew.

The second half got underway in what was a big game for the Coasters who looked to turn their season around.

Katie Bowers-Folan looked to make an instant impact from the off as she turned her defender

and got a shot on goal, but again the effort drifted wide.

The Coasters made a change with Osvath being introduced to try and sway the contest in the Coasters' favour, and she almost had the instant, desired impact as she got the ball out of her feet before forcing the Donny' keeper into a great save.

As the game reached its final stages, Coasters starlet Karri Chan popped up with a last minute winner as she stole in and smashed in past the Belles 'keeper to open the scoring and seal the victory.

The strike was practically the final action of the game as the Coasters make it two consecutive wins at Kellamergh Park and they'll return to KP when they face **Cheadle Town Slings on November 17.**



com DAZN.com DAZN.com DAZN.c



24/25

NATIONAL LEAGUE HAS A NEW HOME

All matches.
All in one place.
Prices from £9.99

Sign up at DAZN.com/NLTV



Download the DAZN app
to watch matches live
or on-demand.

Available on any device,
including Smart TV's,
mobiles and your Sky box.

DAZN.com DAZN.com DAZN.com DAZN.com DAZN.c

THIS WEEK IN AFC FYLDE

This week in AFC Fylde history:

Nantwich Town 0-1 AFC Fylde – (9th November 2019)

In this week of Coaster's history, we look back on an FA Cup First Round victory away at Nantwich Town thanks to a Ryan Croasdale goal on the stroke of half-time.

Despite a spirited performance from The Dabbers, they couldn't quite find a way to prevent the Coasters progressing into the second round.

The game started off as a typical cup affair – with the hosts roared on by a bumper home crowd at the Weaver Stadium.

Danny Rowe tried to get things going for the Coasters, twisting and turning his way into the area, but his ball across the six yard-box was dealt with by Nantwich.

The Coasters next won a free-kick 30 yards from goal, which Rowe took himself – hammering towards goal and forcing Gregory Hall into an unassured save.

The Dabbers then won a free-kick after former Coasters' player Sean Cooke was brought down by Danny Philliskirk.

Cooke took the set-piece, only for it to be blocked by the wall, from which the Coasters broke.

Jordan Williams went on a bursting run down the left where he had Matty Kosylo and Ryan Croasdale waiting on the right, with the ball falling to the latter.

Croasdale attempted a first time finish, and on first look, got it all wrong, as his shot skewed off of him and high into the air, looking as if it would spin wide.

Ironical jeers from the home crowd were quickly silenced, as the ball dropped down onto the goal line, and bounced in off the post.

The Coasters number eight was mobbed by his teammates for his inadvertent finish, and gave Fylde a well deserved lead on the balance of play.

The first chance of the second-half fell to Cooke, hitting a shot from range which veered just right of Dan Lavercombe's post.

As the game continued, Nantwich's sense of urgency grew with it – knowing they needed at least one goal, or their FA Cup journey was over.

The Coasters made changes in a bid to stretch the game, with creative midfielders Nick Haughton and Mark Yeates joining the fray.

It very nearly paid off, as Mark Yeates was able to pick Neil Byrne out in the box, with the centre-half controlling it well, before slamming it



home – however the offside flag was up on the near side.

The game opened up in the latter stages, and The Dabbers enjoyed their best spell of possession. The ball fell to striker Malkin in the area, but he couldn't set himself, and fired the ball well over the bar, much to his dismay.

Nantwich mounted one last attack and won a corner. It was kitchen sink time, as even the keeper Hall was up – but there was to be no fairytale finish.

The Coasters cleared the corner and Mark Yeates had an open goal to aim at before being fouled, which was the referee's cue to bring the game to an end.

For only the second time, AFC Fylde progressed into the Second Round of The FA Cup.

Teams:

Nantwich: Hall, Bourne, Devine, Harrison, Langley, Hughes, Lawrie (Mwasile), Webb, Malkin (McDonald), Cooke, Walsh (Schousboe).

Subs: Stair, Moss, Davis, Saxon.

AFC Fylde: Lavercombe, Burke, Byrne, Whitmore, Taylor, Philliskirk, Croasdale, Kosylo (Yeates), Bradley (Haughton), Williams (Forbes), Rowe.

Building a winning side



Breck is a Lancashire-based property development and investment business and proud supporters of AFC Fylde.

We work with housing providers across the North, helping transform communities and neighbourhoods, while building our own sustainable portfolio of investment properties.

Visit breck.co.uk to find out more.



NEXT 3 HOME GAMES AT **MILL FARM**



EBBSFLEET UNITED
23/11/24 - 3pm



EASTLEIGH
14/12/24 - 3pm



ROCHDALE
26/12/24 - 3pm



SUPPORTER'S GROUP: #BORNTOBEFYLDE



We're Nearly Ready for the OFF!

The Supporters Group next Race Night takes place on **Friday 22nd November 2024 in Bradleys**. The first of eight races starts at 8pm prompt with bets placed from 7.30pm, the evening as usual will be compered by the golden-tongued stalwart, Brian Porter.

It is expected to be a busy night, so get there early to secure your table.

Horse sponsorship is available at £2 each. You can name your horse, and the funnier the better - because Brian must shout them out!

ALSO AVAILABLE ARE:

Event Sponsors	£50
Race Sponsors	£25
Jockey Sponsors	£2

Contact any committee member or email
fundraising@afcfyldesupporters.co.uk to find out more.

Do come down and join the fun. It's open to everyone, not just Supporters Group members. Bring your friends, family, neighbours - **All are welcome!**

Easyfundraising

You can help the Supporters Group raise free funds and make a difference. Please sign up, it's easy and **completely FREE!**

7,400 brands donate when you do your usual online shopping - at no extra cost to you! All you need to do is enter the Easyfundraising website to register and nominate AFC Fylde Supporters Group for donations.

There are already 22 supporters registered who have **raised over £500** over the past 18 months.



Supporters Group Coach Travel Details:

Saturday 16th November 2024 - Braintree Town

The coach will leave Mill Farm at 8am.

Adult (member)	£30
Adult (non-member)	£40
Under - 16 (member, accompanied by an adult)	Free
Under - 16 (non-member, accompanied by an adult)	£5

To book your place on any of the above, please email travel@afcfyldesupporters.co.uk

Payment can be made in cash on the coach or by bank transfer.



Supporters Group Note

A list of coach bookings will be shown on the Coasters Information Facebook page. If you are on the list but then find you are unable to travel, please let the Supporters Group know so that there is availability for others to travel.

The Supporters Group reserves the right to cancel away travel if numbers mean it is not feasible and will provide as much notice of this as is reasonably possible.

Travel on a coach is subject to the Supporters Group Terms and Conditions

All supporters travelling on a coach to away games must park on the North Stand Car Park.

SYD'S CHALLENGE!



1. WHAT NUMBER DOES MASCOT SYD WEAR?

2. WHO IS FYLDE'S TOP SCORER THIS SEASON?

3. WHO IS THE GATESHEAD MANAGER?

4. WHERE DO GATESHEAD PLAY THEIR HOME GAMES?



WHO'S THE PLAYER?

WORD SEARCH

F I V O S S U D O V I Q
Y Y A T I C S H B Q A A
B F A R M A G K A Y O V
Y E Q D A S A X M M T L
L G R A X T V R A O A L
Z S U R I Y I A S E M A
P E D D S E N B A Y W B
R M S H Y T S S P P O S
I E Y D V O E L I Y P M
C E E T O I S Y D L Y I
K E E V O S S H I R M L
H C A O H E B X R P Z L

CAN YOU FIND ALL FIVE?

MILL
HEED
GAVIN

SYD
BALL

ANSWERS (NO CHEATING!!)

QUIZ - 1. 88 2. NICK HAUGHTON 3. CARL MAGNAY
4. INTERNATIONAL STADIUM WHO'S THE PLAYER: JON USTABASI

L Z P R X B E H O V H
K E V O S S H I R M L
I A T I O S Y D L Y I
M E Y D V O E L I Y P M
R M S H Y T S S P P O S
P E D D S E N B A Y W B
A V A T I C S H B A V
L G R A X T V R A O A L
Z S U R I Y I A S E M A
B F A R M A G K A Y O V
Y Y A T I C S H B Q A A
F I V O S S U D O V I Q

LEAGUE TABLE

24/25

POS	NAME	PLAYED	WON	DRAWN	LOST	GD	PTS
1	YORK CITY	16	10	5	1	19	35
2	FOREST GREEN	16	10	4	2	16	34
3	BARNET	16	11	0	5	14	33
4	GATESHEAD	16	10	3	3	9	33
5	OLDHAM	16	8	6	2	8	30
6	ROCHDALE	16	8	3	5	10	27
7	YEOVIL	16	7	4	5	5	25
8	SOLIHULL	16	7	3	6	-2	24
9	ALTRINCHAM	16	6	5	5	3	23
10	HALIFAX	16	6	5	5	2	23
11	EASTLEIGH	16	6	5	5	1	23
12	SUTTON	16	6	4	6	0	22
13	DAG & RED	16	5	6	5	9	21
14	SOUTHEND	16	5	6	5	1	21
15	HARTLEPOOL	16	5	6	5	-1	21
16	TAMWORTH	16	6	3	7	-8	21
17	ALDERSHOT	16	4	6	6	-4	18
18	WOKING	16	4	5	7	-5	17
19	MAIDENHEAD	16	4	4	8	-6	16
20	AFC FYLDE	16	4	3	9	-16	15
21	BRAINTREE	16	3	4	9	-8	13
22	WEALDSTONE	16	2	6	8	-11	12
23	BOSTON	16	2	4	10	-14	10
24	EBBSFLEET	16	1	4	11	-22	7

COASTERS SHOP



NEW TRAVEL RANGE



AFC TRAVEL TEE **£15**



AFC TRAVEL HOODIE **£35**

NEW ARRIVALS



AFC RED & NAVY CAP **£17**



TRANSPARENT BOTTLE **£6**



AFC WATER BOTTLE **£4**



RED & BLUE GYM BAG **£6**

TEAM LINE-UP



HEAD COACH KEVIN PHILLIPS

THEO RICHARDSON (GK)	1
PATRICK GAMBLE	2
OWEN EVANS	3
HARRY DAVIS	4
EMEKA OBI	5
ADAM LONG	6
CHARLIE JOLLEY	7
ETHAN MITCHELL	8
OFFRANDE ZANZALA	9
NICK HAUGHTON	10
JON USTABASI	11
MAX BARDELL	14
COREY WHELAN (C)	17
LINCOLN MCFAYDEN	18
LUKE BRENNAN	19
GAVIN MASSEY	20
TYLER ROBERTS	21
JACK MORRIS	22
BRYCE HOSANNAH	23
JESSE HAILWOOD	28
DANNY ORMEROD	29
BEN WINTERBOTTOM (GK)	31
TAEOR O'KANE	34
EWAN DODGSON (GK)	37
JOE RILEY	40



MANAGER CARL MAGNAY

1	TIERNAN BROOKS(GK)
2	ROBBIE TINKLER
3	BRANDON HAUNSTRUP
4	JACOB BUTTERFIELD
5	KENTON RICHARDSON
7	TOM ALLAN
8	REGAN BOOTY
9	OWEN OSENI
10	CALLUM WHELAN
11	BEN WORMAN
12	KAIN ADOM
14	JEAN BELEHOUAN
15	RYAN CARR
16	BEN RADCLIFFE
17	MARK BECK
18	JOE GRAYSON
19	LUKE HANNANT
21	WILL CONSTANTIN
22	GREG OLLEY (C)
23	TYRELLE NEWTON
27	JOSH HOME
30	OLLIE BASEY
34	CHARLIE COLKETT
40	HARRY MOSS
45	JOVAN MALCOLM
46	DAN JONES

MATCH OFFICIALS

SATURDAY 9TH NOVEMBER 2024

AFC FYLDE V GATESHEAD | MILL FARM | 3PM K.O

REFEREE: MICHAEL BARLOW • **ASSISTANT REFEREE 1:** MATTHEW BACON
• **ASSISTANT REFEREE 2:** MARTIN PARKER • **FOURTH OFFICIAL:** NEIL EVANS

