

# WHY PSECONNECT?

**1**

## Brokerage Business Automation

PSEConnect was developed to automate a brokerage's operations by creating a holistic system specifically catered to your needs

**2**

## Software-as-a-Service

PSEConnect's Self-Service Portals harmonize your brokerage's front and back-office operations through seamless synchronization of data.

**3**

## Say goodbye to fragmented systems

PSEConnect has real-time access to PSE Market Data, enabling you to trade in the stock market easily.

**4**

## Continuous systems innovation and upgrades

PSEConnect has built-in compliance tools and reports.

**5**

## Software-as-a-Service

No need for servers and leased lines.

**6**

## Continuous expansion of the PSEConnect Ecosystem

We listen to our partners' feedback. We incorporate their suggestions on future updates.

**7**

## Compliance made easy

Be a part of our growing partnerships.

**8**

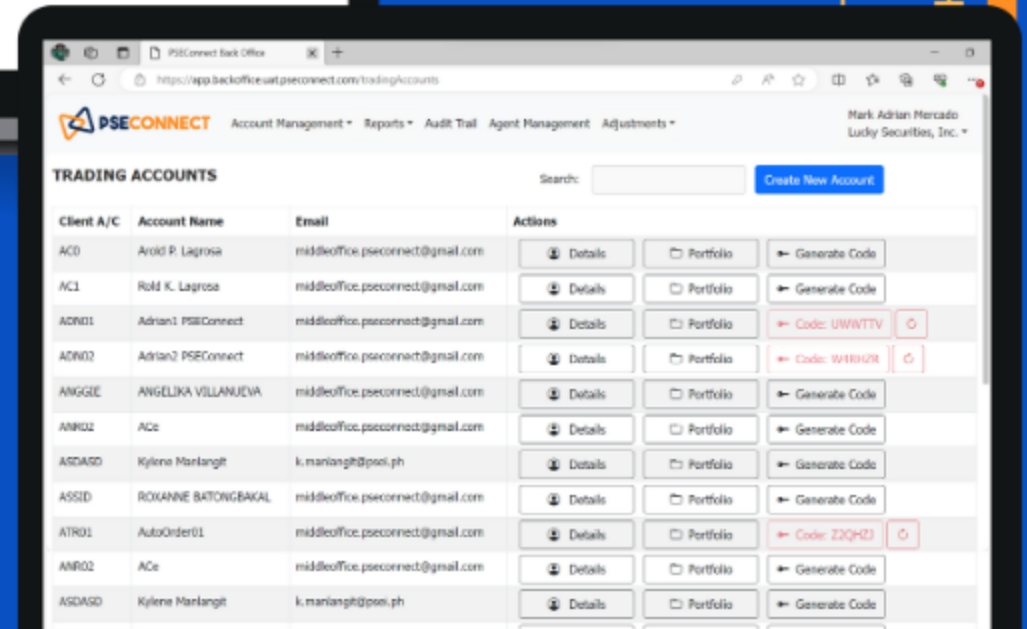
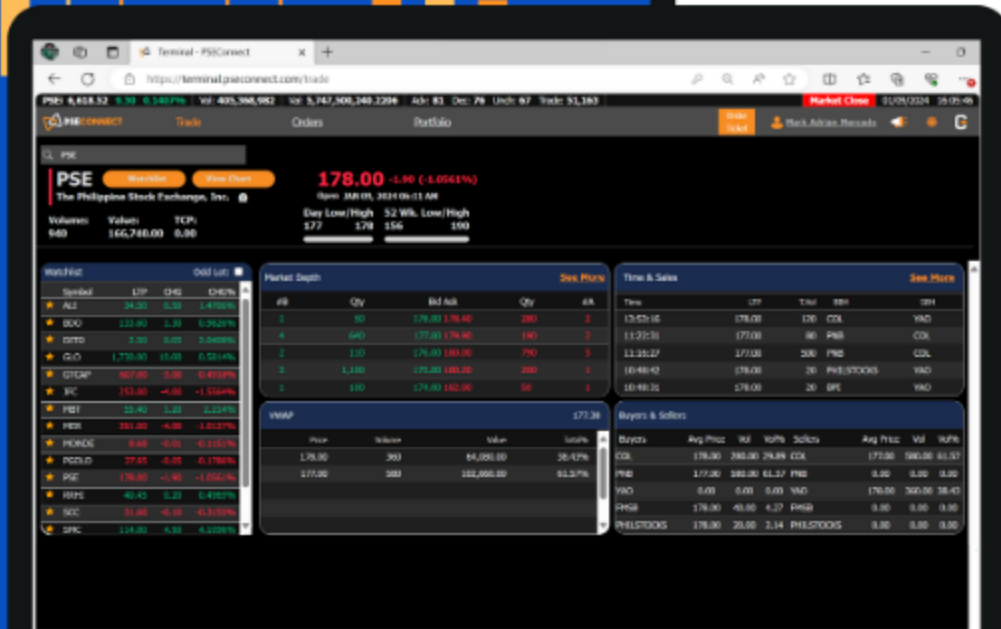
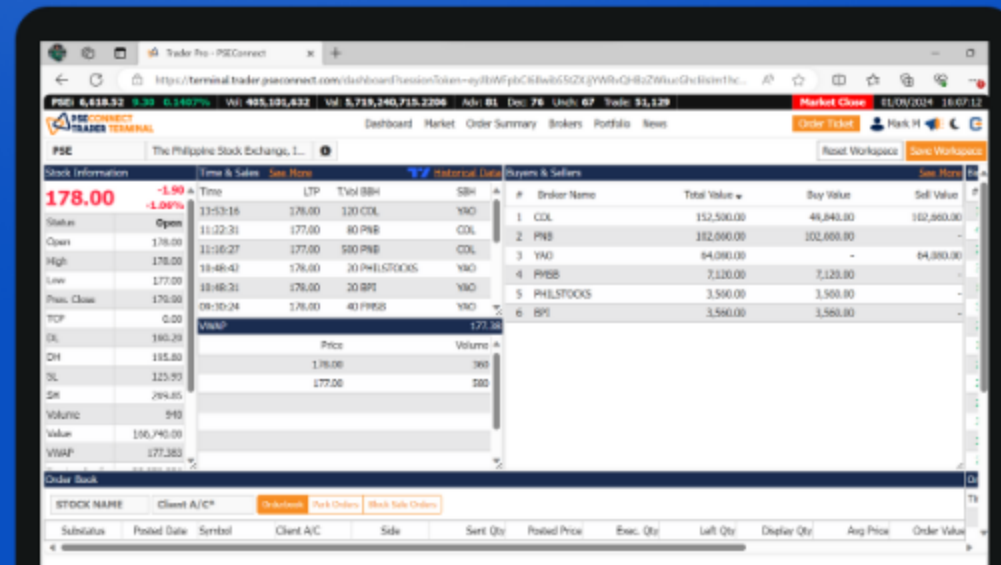
## Hassle-free onboarding

Go-Live with us in less than 30 days!

# SYNERGISTIC TRADING SUITE

Seamlessly integrated terminals

## Trader PRO



PSEConnect Online

Self-Service Portal

# HOW WE AUTOMATE YOUR OPERATIONS

## Self-Service Portal Feature Set Overview

- 1 Seamless Cash and Position Sync
- 2 Accessible Anywhere
- 3 Centralized Account Management
- 4 Agent Management
- 5 Link Multiple Accounts
- 6 Compliance Reports
- 7 Order Confirmation
- 8 Account Opening



# REDEFINING TRADING EXPERIENCE

Trader PRO Feature Set Overview

- 1** Accessible Anywhere
- 2** Easily trade for your clients
- 3** Trader-centric functions
- 4** Real-time portfolio monitoring
- 5** User-friendly interface
- 6** Customizable workspace
- 7** Never miss out on news and disclosures
- 8** Continuous Enhancements

# STREAMLINING USER'S INVESTING JOURNEY

PSEConnect Online Feature Set Overview

- 1** Accessible anywhere
- 2** Real-Time Portfolio Viewing Anytime, Anywhere
- 3** User-Friendly Interface
- 4** Ride The Market's Momentum
- 5** Never Miss Out On News And Disclosures
- 6** Continuous Enhancements