

Westchester Home Spring 2017

HOMIE

WESTCHESTER

THE 6TH ANNUAL DESIGN AWARDS

20+ CATEGORIES
60+ FINALISTS

Endless inspiration



The Perfect
Paint Colors

Published by Westchester Magazine

SPRING 2017 \$4.99
westchestermagazine.com





TRY US ON FOR
STYLE

SPECIAL SAVINGS GOING ON NOW

ETHAN ALLEN®

W.L.LANDAU AN AUTHORIZED ETHAN ALLEN RETAILER
152 SOUTH CENTRAL PARK AVENUE HARTSDALE, NY 914.684.0360

Ask a designer or visit ethanallen.com for details. Sale going on for a limited time. ©2017 Ethan Allen Global, Inc.

TEMPLE ST CLAIR

FINE JEWELLERY



^R_&_M Woodrow Jewelers



©2016 California Closet Company, Inc. All rights reserved. Each franchise independently owned and operated.

CALIFORNIA CLOSETS®

Experience a California Closets system custom designed specifically for you and the way you live.
Visit us online today to arrange for a complimentary in-home design consultation.

914.592.1001 californiaclosets.com

WESTCHESTER 16 Saw Mill River Rd., Hawthorne ROCKLAND 83 South Main St., New City



LEICHT[®]

Westchester Kitchens
GERMAN PERFECTION IN DESIGN

KITCHENS • VANITIES • CLOSETS • PANTRIES • OFFICES • MEDIA CENTERS • LAUNDRY ROOMS

FREE MONTHLY SEMINAR - HOW MUCH WILL MY KITCHEN COST? – COMPLIMENTARY ZWILLING COOKWARE SET FOR YOUR NEW KITCHEN

200 EAST MAIN STREET • MOUNT KISCO, NY 10549 • (914) 218-3433 • 11 E PUTNAM AVE • GREENWICH, CT 06830 • (203) 340-9933
WWW.LEICHTWESTCHESTER.COM • NEW YORK | WESTCHESTER | BROOKLYN | QUEENS | MIAMI | CHICAGO | GREENWICH SHOWROOM NOW OPEN



Scarsdale
914.723.2002

Somers
914.232.2020

Stamford
203.975.9448

Yorktown
914.736.2468

Do You Dream In **KOHLER**® ?

Visit our new Scarsdale location at
1019 Central Park Avenue,
next to buybuy Baby.



THE BOLD LOOK
OF **KOHLER**®

More at bestplg.com





introducing
SPRING 2017 COLLECTION

Mitchell Gold + Bob Williams

GREENWICH | NEW YORK CITY | MANHASSET | PARAMUS | MGBWHOME.COM

FEATURING: ALAIN SIDE CHAIR WITH TIBETAN FUR, SOLANGE LARGE 3 DRAWER CHEST, LUNA CHANDELIER,
CLARITY MIRROR, ANGLED CONE VASE, CURVED GOLD BOWL, BLACK PENN SHELL BOX



KLAFFS.com
HOME | LIFE | STYLE

Lighting | Kitchens | **Bath** | Decorative Hardware | Tile & Stone

KALLISTA.

South Norwalk | Danbury | Scarsdale



1.800.552.3371

Check out our New Home Design Magazine **KLAFFS**Style at KLAFFS.com

—

EVERY HOUSE WAITS TO BE A

Marvin Home

—



©2017 Marvin Windows and Doors. All rights reserved. Registered trademark of Marvin Windows and Doors. ENERGY STAR and the ENERGY STAR certification mark are registered U.S. marks.

Replace your windows without sacrificing the character of your home. Marvin Windows and Doors are thoughtfully designed to give you the comfort and energy efficiency you demand, and an unrivaled quality that rejuvenates the beauty of your home.

FIND INSPIRATION AND YOUR LOCAL DEALER AT MARVINWINDOWS.COM

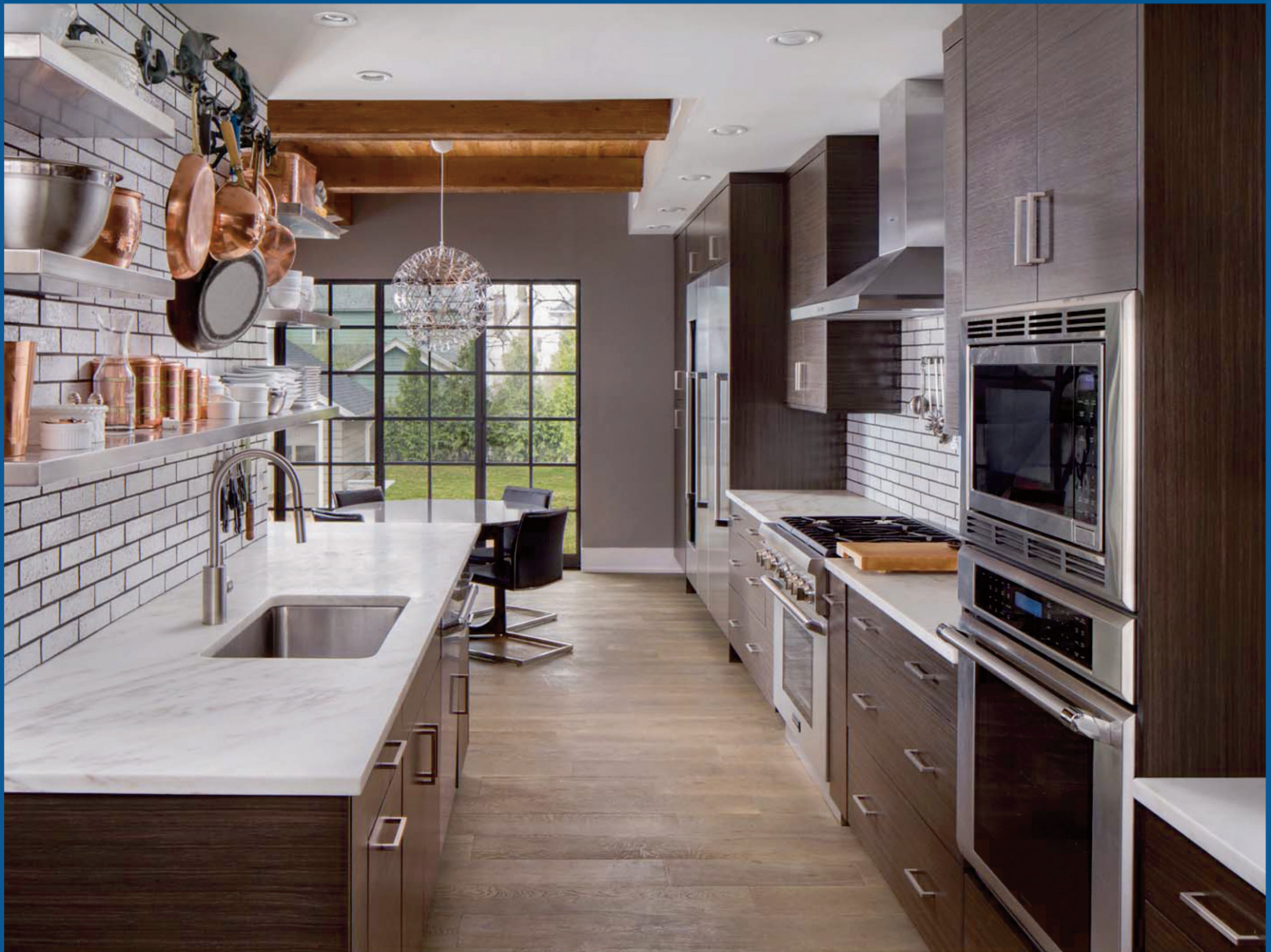
MARVIN 
Windows and Doors
Built around you.®

MAJESTIC

KITCHENS AND BATH

700 Fenimore Road | Mamaroneck, NY 10543 | 914-381-1302 | www.majestickitchens.com

March Is Open House Month • Open Sundays In March • Noon - 4pm



KITCHENS • BATHS • GRANITE & MARBLE • CUSTOM CABINETS • TILE • HARDWARE
OVER 9000 SQUARE FOOT SHOWROOM • OVER 100 KITCHENS AND BATHS ON DISPLAY



GLOBAL CONNECTIONS. LOCAL AGENTS.

Your buyers could be down the street, in New York City, or on the other side of the world, but Douglas Elliman's local agents have the tools to find them... reach matters. We are where our clients are.

Put the power of Elliman to work for you.

ARMONK | BEDFORD | CHAPPAQUA | GREENWICH | KATONAH | SCARSDALE

ELLIMAN.COM

 Douglas ^{EST. 1911} Elliman
REAL ESTATE

51

AND THE FINALISTS ARE...

We announce the finalists of our 6th Annual Design Awards.

BY JENN ANDRLIK



Cover photo by Phillip Ennis;
photo this page by Regan Wood

51



Westchester's premier design, cabinetry and kitchen remodeling showroom
featuring fine cabinetry from Plain & Fancy, Medallion, UltraCraft and KBS Signature.

50 Virginia Road, North White Plains, NY 10603 (914) 946-8600 kbskitchen.com

Contents

DEPARTMENTS

16 EDITOR'S MEMO

19 OUT & ABOUT

20 BY DESIGN IN...

Check out Mamaroneck's best places to shop for home decor.

BY LAURIE YARNELL

22 SPACE SOLUTIONS

Four rooms that are functional, fun, and perfect for kids

BY JENN ANDRLIK

30 PEOPLE TO KNOW

Meet the local queen of color: color consultant Debra Kling.

BY LAURIE YARNELL

36 PEOPLE AND PLACES

An inside look at events around town

39 HOME FRONT

40 IN THE GARDEN

Learn how one community created a thriving co-op garden.

BY TOVAH MARTIN

46 RENOVATION OF THE KITCHEN

A modern, white kitchen shines, plus how to get the look.

BY MARY KATE HOGAN

92 CURB APPEAL

Jump into spring with these bright ideas for your front stoop.

MARKET WORK BY MELISSA DEANE

94 REAL ESTATE

The *wow*-worthy multimillion-dollar homes that are on the market now

BY MARY KATE HOGAN

96 DESIGNER FAVORITES

Local designers and tastemakers share their go-to paint colors.

Spring 2017

46



30



92



20



22



94



THE BOLD LOOK
OF **KOHLER**®

UNCOVER A WEALTH
OF POSSIBILITIES

CONSOLIDATED
PLUMBING SUPPLY

Since 1928

121 Stevens Avenue, Mt. Vernon, NY | 914.668.3124 | See the full line at consolidatedplumbingsupply.com

S H A R O N
R E M B A U M
I N T E R I O R S



www.sharonremaum.com



**M A D E L Y N
J O R D O N
F I N E A R T**

Consulting | Collecting | Exhibitions
37 Popham Road, Scarsdale, NY
914-723-8738
www.madelynjordonfineart.com

HOME

WESTCHESTER

Publisher Ralph A. Martinelli

ART/EDITORIAL

Executive Editor Jenn Andrlik
Creative Director Halina Sabath
Managing Editor Amy R. Partridge
Senior Writer Karen Odum
Art Assistant Tykisha Jacobs
Copy Editor Allison Hatfield

PRODUCTION

Production Director Kathee Casey-Pennucci
Associate Art Director Jodi Cecere
Imaging Specialist Lauren Golde
Production Designer Alexandra Tutelian

DIGITAL

Publisher of New Media Mike Martinelli
Director of Digital Strategy Greg Mathias
Audience Development Manager Patti Devine
Executive Digital Editor Alexandra R. Kelly
Digital Editors Jonathan Ortiz,
Zarah Kavarana
Digital Content Producer Meaghan Glendon
Digital Producer James Maley
Digital Ad Trafficker Madeline Mikucki

CONTRIBUTORS

Writers Melissa Deane, Mary Kate
Hogan, Tovah Martin, Laurie Yarnell
Illustrators, Photographers, and Designers
Andre Baranowski, Ken Gabrielson, Mariko
Jesse, Peter Krupenye, John O'Donnell

TODAY MEDIA NEW YORK

Editorial Director Robert Schork
Group Creative Director Robert Supina

CIRCULATION

Circulation Director Greg Wolfe
Circulation Manager Russell Marth

ADVERTISING

Associate Publisher Samuel N. Wender
Sales Manager Ana Medina Mantini
Account Executives Matthew Bonanni,
Rosana Cohen, Jill Coronel, Luanne
McCabe, Frank Tarascio, Joyce White
Digital Sales Manager Lauren Pettus
Digital Account Executive Jenna Nedwick
Sales Support Manager Angie Boreland
Publisher's Representatives
Iver Sales and Marketing, Inc.; MBG
Media Sales, Inc.; MCase Media

MARKETING

Director of Marketing Jennifer D'Ambrosio
Marketing Communications Manager
Barbara Begley
Distribution Manager Paul Greicius
Graphic Designer Arlene So
Social Media Coordinator Sara Strauss
Marketing & Events Associate Casey Ferreira
Marketing Assistant Brianna Perriello

ADMINISTRATION

Chief Operating Officer
William R. Wehrman
Controller Donna Kraidman
Office Manager
Catherine Colon-Cocco
Accounts Receivable Administrator
Natalie Martelli
Accounting Manager Jennifer Heller
Senior Credit Analyst Jennifer Schuele-Lee
Staff Accountant Nancy Nyce
Bookkeeper Michele Ward
Accounts Receivable Specialist
Jennifer Floor
TODAY MEDIA CUSTOM COMMUNICATIONS
COO/Group Publisher Richard J. Martinelli
Senior Account Executive Allan Kolstein

**PUBLISHED BY WESTCHESTER MAGAZINE, A DIVISION OF
TODAY MEDIA, A MARTINELLI HOLDINGS LLC.**

HOW TO REACH US

Editorial 914.345.0601 (ext. 163) jandrlik@westchestermagazine.com
Art Department 914.345.0601 (ext. 126) art@westchestermagazine.com
Production 914.345.0601 (ext. 125) production@westchestermagazine.com
Advertising 914.345.0601 (ext. 138) sales@westchestermagazine.com
Circulation/Subscriptions 800.254.2213; circ@westchestermagazine.com
Marketing 914.345.0601 (ext. 149) pr@westchestermagazine.com
Custom Communications 914.345.0601 (ext. 136) richard.martinelli@todaymediainc.com

FOR REPRINTS, PERMISSIONS, AND LICENSING OF WESTCHESTER HOME CONTENT: BRETT PETILLO AT
WRIGHTS MEDIA: 877.652.5295; BPETILLO@WRIGHTSMEDIA.COM

Westchester Home: Spring 2017, Vol.15, Number 2. Copyright © 2017 (USPS: 16980) is published four times per year (Spring, Summer, Fall, and Winter issues) by Today Media, a Martinelli Holdings LLC, 2 Clinton Ave, Rye, New York, 10580. Periodicals postage paid at Rye, New York and additional mailing offices. All Rights Reserved. This magazine or its trademarks may not be reproduced in whole or in part in any form or by any means electronic or mechanical, including photocopying or recording, or by any information storage and retrieval system now known or hereafter invented without written permission from the Publisher. Westchester Home assumes no responsibility for unsolicited materials. Subscriptions: \$15.96 per year (4 issues). Single Copy / Back Issues: Available at the cover price, plus \$2 shipping and handling, with bulk rates available. Call 1.800.285.0400. ATTENTION POSTMASTER: Send address changes to Westchester Home PO Box 460817 Escondido CA 92046-9867. Address changes should be accompanied by a mailing label from a recent issue.



WESTCHESTER HOME is published by Westchester Magazine, a division of Today Media,
a Martinelli Holdings LLC, 2 Clinton Avenue, Rye, NY 10580 914.345.0601

TODAY MEDIA, A MARTINELLI HOLDINGS LLC

President Robert F. Martinelli | **Secretary/Treasurer** Richard J. Martinelli
Vice President Ralph A. Martinelli | **Chairman** Angelo Martinelli

www.westchestermagazine.com

GARTH CUSTOM KITCHENS, INC.

www.garthcustomkitchens.com • garthkit@optonline.net

Fine Custom Cabinetry for Kitchens, Baths, Libraries, Bedrooms, Computer and Entertainment Systems



Wood-Mode[®]
FINE CUSTOM CABINETRY

BROOKHAVEN[®]
CABINETRY

Same location for over 60 years
24 Garth Road • Scarsdale, NY 10583
Tel: 914-723-1223
Fax: 914-723-1249

COUNTRY WILLOW

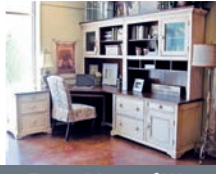
Home Furnishings • Custom Furniture • Kids & Baby

Furniture For Life

Easy Living Sustainable Designs



Visit Our 35,000 Sq Ft Showroom



Just 30 Minutes or Less From Most of Westchester • Exit 6 off 684

WWW.COUNTRYWILLOW.COM

230 RT-117 BYPASS RD, BEDFORD HILLS, NY 10507 • 914-241-7000

EDITOR'S MEMO

spring is here

Spring is upon us once again, and that means everything is in bloom outside — and inside, including our 6th Annual Design Awards.

This year, we've expanded our awards to comprise three times as many categories as in the past. With that came hundreds more submissions to comb through. In this issue, you will find over 60 finalists in 20 categories.

Also, look for additional categories and finalists online, at www.westchestermagazine.com/designawards2017, including five readers' choice categories with which we need your help. Log on and vote for your favorites. We can't wait to see whom you pick as the winners!

To check out the talent pool in person, purchase your tickets and join us when we announce the winners in each category on April 12, at The Performing Arts Center at Purchase College.

Until then, we have plenty of home inspiration for you in this issue. See a kitchen that is classic and stylish, learn to start a co-op garden with your neighbors, and get a look at the most outrageous houses on the market in Westchester right now.

Until next time...

Jenn Andrlik
Jenn Andrlik
Executive Editor



Introducing our newest and youngest reader. My daughter Madeline.

RESIDENTS RAVE ABOUT RITZ-CARLTON RESIDENCES

"We love living at The Ritz-Carlton Residences Westchester. It provides security and tranquility with awesome views."

Carole and Bert Mitchell

"After living in our spacious home for 40 years, we became empty-nesters and moved to the Ritz-Carlton Residences. The amenities offer a five-star lifestyle."

Monica and Edward Kaufman

"We are an active retired couple and enjoy traveling around the world. Living here is a dream come true – no hassles, no worries. We just enjoy life."

In-aiie and Edward Kang

"We're thrilled with the living experience here. The amenities of the building and the attention to detail by the entire staff have lived up to our highest expectations."

Alyce and Sanford Schwartz

"The services and amenities enhance our busy life. Our grandchildren can't wait to visit us and play in the playroom, swim in the pool and dine in the lobby lounge."

Monica Lavin and Rick Ross

"We love our apartment with its beautiful views, the terrific staff, the services and amenities and the convenient location. Living here has exceeded our expectations."

Dana and Randi Wiston



THE RITZ-CARLTON RESIDENCES®
WESTCHESTER II



EXCLUSIVE VIEWS, EXCEPTIONAL SERVICE, EXTRAORDINARY LIVING

The Ritz-Carlton Residences Westchester II offers luxurious penthouses-in-the-sky with service and amenities usually reserved for Park Avenue. All of this in a leafy neighborhood of shops and dining that just a lucky few call 'home.'

- Spacious 2,500 to 2,900 sq ft floor plans, starting at \$1.9 million
- Endless amenities: 24/7 staff, fitness center, swimming pool, and more
 - 146 guest bedrooms next door at The Ritz-Carlton Hotel

914.946.9200 | rcresidenceswestchester.com

The Residences at The Ritz-Carlton Westchester II, 5 Renaissance Square, White Plains, New York 10601. Marketing & Exclusive Sales Agent: Houlihan Lawrence, Inc. Sponsor: Renaissance Condominium Partners II, 7 Renaissance Square, White Plains, New York 10601. The complete offering terms are in an offering plan available from Sponsor: CD06-0794. We are pledged to the letter and spirit of U.S. policy for the achievement of equal housing opportunity throughout the Nation. The Residences at The Ritz-Carlton, Westchester, II are not owned, developed or sold by The Ritz-Carlton Hotel Company, LLC. Renaissance Condominium Partners II uses the Ritz-Carlton marks under license from The Ritz-Carlton Hotel Company, LLC. Models do not represent racial preference.





Why Wait?

Interior Design & Decor
Ready to Go. Trade &
Special Orders Welcomed

20 Purchase St., Rye
914-921-NEST (6378)

shopthenest.com
24/7



nest
inspired
HOME

J·POCKER
CUSTOM FRAMES & PRINTS SINCE 1926



BRONXVILLE NEW YORK CITY GREENWICH WESTPORT

WWW.JPOCKER.COM

out & about

BY DESIGN IN...

SPACE SOLUTIONS

PEOPLE TO KNOW

PEOPLE & PLACES

On the following pages, learn where to shop in Mamaroneck for home decor; get stylish space solutions for your child's room; and meet Debra Kling, a local color expert.



Photo by Peter Krupenye

A Design District in Westchester

Take a stroll through Mamaroneck to browse these designer resources and shops.
Discover some welcome surprises in this tiny hamlet's sleepy little shopping district.

Though not as quaint as its neighbor, Larchmont, Mamaroneck has its own salt-of-the-earth charm that dates back to its boatbuilding, seafaring roots. And though it boasts some grand waterfront estates, its overall ambience, especially along busy Mamaroneck Avenue and adjacent areas, is decidedly unpretentious. Of particular interest is a design district of sorts that has sprung up in its Flats section, an area of repurposed warehouses and commercial buildings. Here, a guide to the go-to home-design resources in this hardworking town.

The Flats District

Motif Designs/Lyn Peterson Design

These well-known sister companies are housed in one shared, loft-like space. Motif sources and curates collections of home furnishings exclusively to the trade; Lyn Peterson Design is a highly acclaimed interior design firm, whose namesake, the author of three decorating books as well as a licensed contractor, has three *House Beautiful* covers to her credit.

520 Fenimore Rd; 914.633.1170
www.motif-designs.com
www.lynpeterson.com

Chatsworth Antiques & Consignments Recently relocated from a cramped Mamaroneck Avenue storefront to this 5,000 sq ft warehouse, Chatsworth is a must-visit for treasure hunters of antique and midcentury furniture, art, and collectibles, many of which come from nearby mansions. Be sure to check out its parking area flea markets in the spring.
510A Ogden Ave; 914.698.1001;
www.chatsworthfurniture.com



K&B Creations An abbreviation for “kitchens and baths,” K&B provides custom, semi-custom, and stock and builder-grade cabinets — plus stone and aggregate countertops — and wins raves from design pros for being “well-priced, smart, prompt, and honest.”

560 Fenimore Rd; 844.277.6466;
www.westchesterkitchen.net

Mist Home Vintage and Modern This newer home and gift boutique offers an eclectic mix of old and new accents and décor items.
614 Fenimore Rd; 914.462.1016

Bullseye Glass Company Resource Center New York This ultra-cool kiln-glass center, whose parent company is one of the more sophisticated manufacturers of colored glass for art and architecture, exhibits and sells functional and decorative glass-work and offers classes for making your own.
115 Hoyt Ave; 914.835.3794;
www.bullseyeglass.com

Carpet Fabrications International (CFI) CFI, which makes and installs custom carpets and broadloom for some of the top carpet showrooms and designers in the country, is reputed to be one of the best workrooms of its type. To the trade only.
628 Waverly Ave; 914.381.6060;
www.carpetfabrications.com

William G. Winters, Architect A well-regarded licensed architect who works on projects ranging from historic to modern renovations — plus new construction incorporating passive house technologies for energy savings — William Winters also heads up Whitegate Millworks, supplier of custom cabinets and built-ins.
520 Fenimore Rd; 917.710.7280

1-800 NY Bulbs Primarily geared to commercial clients, this shop inventories thousands of types of lightbulbs and will sell homeowners what they’re looking for if it’s in stock.
620 Fayette Ave; 800.692.8527;
www.nybulbs.com ■■

Bilotta Kitchens Family owned and operated since 1985, Bilotta is among the area’s more respected residential kitchen firms. It’s known for its award-winning designers, superior products — including its own custom cabinetry collection — and exquisite craftsmanship.
564 Mamaroneck Ave
914.381.7734; www.bilotta.com

House of Flowers This established firm has a reputation for exquisite event decor. It also sells beautiful fresh-cut flowers, orchids, and flowering and silk plants, and will custom design/order.
231 Mamaroneck Ave
914.698.2522
www.houseofflowersny.com

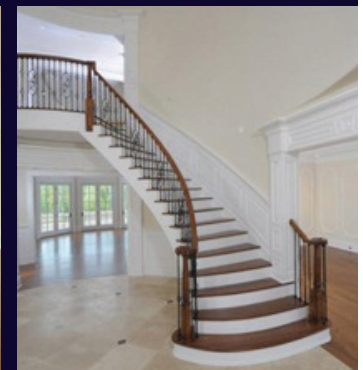
Village Paint Supply Independently owned since 1961, the customer-focused shop features Benjamin Moore paints, Cabot stains, and Hunter Douglas window treatments. It also carries a wide range of painting gear.
365 Mamaroneck Ave
914.698.2494
www.villagepaintsupply.com

Calico Yes, it’s a chain, but it’s a terrific one, with a helpful, complimentary design team and an enticing selection of fabrics, window treatments, trims, upholstery, bedding, and furniture. Two-week express options for window treatments and bedding are available.
1040 Mamaroneck Ave
914.698.9141
www.calicocorners.com

Brewer True Value Hardware This old-fashioned hardware store — a welcome alternative to soulless big-box stores — dates back to 1879 and offers everything for one’s home or yacht.
161 E Boston Post Rd
914.698.3232
www.rgbrewer.com



WJM
DEVELOPMENT CORP.
Custom Builders



FULL SERVICE DESIGN - BUILD COMPANY
THAT WILL MANAGE EVERY STEP
OF YOUR PROJECT FROM START TO FINISH...

“You Dream It, We Build It”

- NEW CONSTRUCTION •
- ADDITIONS •
- RENOVATIONS •

12 RICHMOND PLACE
YONKERS, NEW YORK 10701
914.961.0921
WWW.WJMDEVELOPMENTCORP.COM



For Kids — and Kids at Heart

These four children's rooms are anything but child's play. They combine style, functionality, and personality, just like the kids who inhabit them.



A child's room (whether a playroom or bedroom) should be as joyful as the child who inhabits it. For the parents' sake, it should also be stylish and functional.

These four rooms — a nursery, a playroom, and two bedrooms — are all of the above, but each is as unique as the kids themselves. They all have a few things in common, however: style, plenty of storage, and functionality for miles. Here, the three designers behind these rooms share tips on creating a fun and functional space for your child, no matter his or her age or interests.



DECORATING DEN
INTERIORS®

From inspiration to reality.

914.222.4098



*Our in-home consultation
is complimentary.*

Principal designers
Marina Colella, Sylvie Farrell & Marni Sugerman



J.T. ROSELLE HOME LIGHTING

1759 East Main Street, Mohegan Lake, NY 10547 • (914) 528-8061
333 N. Bedford Road, Mount Kisco, NY 10549 • (914) 666-3700
www.JTRoselleHomeLighting.com

FEISS®
EST. 1955

Two Distinct Bedrooms

A child's bedroom is just as much an oasis for that child as a grown-up's bedroom is for that child's parents. That's why it is so important to create a fun, safe but also serene environment for children to play in and, most importantly, sleep well in.

For these two bedrooms (one shown on previous page), one for a 3-year-old boy and one for a 2-year-old boy, designer Debbie Gottlieb of Fineline Interiors in Armonk used fabric as her inspiration: one a dinosaur-patterned fabric that the client bought, the other a Mr. Fox fabric. "Both patterns are fun and whimsical and easily changed as the boys grow up," says Gottlieb. "I like to design kids' rooms that will grow with the child; pieces like accessories, artwork, pillows, and bedding can be easily changed as the child gets older."

Gottlieb also prefers kid-friendly materials such as soft fabrics that are indoor/outdoor. "I like to use bookcases and benches that are easily reached, beds at lower heights so [they're] accessible, 100 percent wool carpet (most practical for cleaning and wearability), and cozy reading nooks."

And just like any other room kids find themselves spending a lot of time in, a



Must Have: A comfortable bed.

Best Design Tip: If you have two rooms that are mirror images, change the floor plan to make them different.

Best Bedroom Tip: Make sure there is good lighting.

Get the Look: Furniture from Dueduc, tie-dyed wallpaper from O&L, and fabric by Zoffany.

child's bedroom also seems to collect a lot of stuff. "I like to add a top shelf on one wall to store stuffed animals, dolls, or trophies later on," says Gottlieb. "That way, clutter stays off the dresser, desk, or night table. Another fun idea is to make a pocket wall, so fabricated big pockets can store various items."

Gottlieb's other ideas for making a child's bedroom fun and stylish include adding circular area rugs, a tent-like window treatment above a bed to make the room feel cozy, low seating for reading, and a corkboard wall for kids' artwork.

And when thinking about the palette for a bedroom, Gottlieb says, "no colors are off limits if done well. However, if a child is active, it might be a good idea to choose a calm color palette."

The palettes chosen for each of these rooms were driven by the fabrics: blue/chartreuse/taupe for the dinosaur room and terra cotta/olive for the Mr. Fox room. "My client selected colors that defined each son's personality," Gottlieb notes.

Overall, she says, "It's important to have a child feel that their room is 'their' space."

WESTCHESTER HOME
**DESIGN
AWARDS**

INTERNATIONAL AWARD WINNING DESIGN AND BUILD FIRM



SCENIC
LANDSCAPING LLC



TAPESTRY
LANDSCAPE
ARCHITECTURE



TRANQUILITY
POOLS INC.

SCENICLANDSCAPING.COM ♦ TAPESTRYNJ.COM ♦ TRANQUILITYPOOLSNJ.COM

A COLLABORATIVE VISION WITH UNPARALLELED RESULTS
OVER 40 YEARS OF EXPERIENCE

CALL FOR A FREE CONSULTATION: 914.908.5353

SERVING THE TRI-STATE AREA ♦ LIC# WC22305H09 RICHARD J ZIMMER NJCLA #824

Neutral Nursery

When getting started with a nursery design, Denise

Davies of D2 Interieurs says the first thing you should ask yourself is: "Is this nursery going to be used for just this one baby, or will it be passed down to other children?" This will determine the palette, furniture choices, and how you divide the room.

"Sunshine and happiness were the big inspirations for this neutral nursery," says Davies. "The bookshelves were inspired by the client's love of art and serve as both storage for books as well as a way to display books and artwork. And because the house has a midcentury vibe, we used three different Nelson pendants."

If you are working with a larger space, Davies recommends dividing it to create an intimate and cozy environment. She also suggests floating the crib in the middle of the room rather than pushing it up against a wall.

"[In this nursery], we built the loft by dropping the ceiling, [and] we were able to give the room a more intimate feel," she says. "It is currently being used for storage but will be an awesome fort once the children are old enough to safely enjoy it."

The elements that every nursery should have in addition to a crib are a soft and comfy rug ("Do not skimp on this, Davies says, "because there is a lot of floor-time with babies."), great artwork, a professionally designed closet, and a well-designed bookcase with interchangeable bins.

Davies also recommends using a regular dresser that can be used as a changing table by adding a changing pad, "and I always tell parents to invest in a rocking chair rather than a traditional glider. That way, the chair can be used for years to come."



Must Haves: Crib, soft rug, rocking chair, great artwork, storage, and a dresser to which you can add a changing pad.

Best Design Tip: Divide the room, to make a more intimate and cozy space.

Best Nursery Tip: Float the crib in the middle of the room instead of pushing it up against a wall.

Get the Look: Rocker is from Monte, crib is from Oeuf, pillow from Jonathan Adler, bedding from Castle and Things, lighting from Modernica, and sconces from Jonathan Adler.

Get into the *swim*

Serving our
community
for 35 years!



Thank you for voting us the
best pool company in Westchester
in 2014, 2015 & 2016!



35 Years of Experience. All work done by our own experienced installers
518-A North State Rd, Briarcliff Manor • 914.762.1133 • coralseapools.com

License Numbers: PC2395-A WC-05480-H93 HIC.0608004 SPB.0000095



MARBLE AMERICA CORP.

FABRICATORS
INSTALLERS
CUSTOM DESIGNERS
Tile • Mosaic • Slab

535 5th Ave • New Rochelle, NY 10801 • 914-632-3110

DESIGNED BY VICENTE WOLFE

Playful Playroom



Must Have: Comfortable and stain-resistant seating.

Best Design Tip: Get the kids involved in the design but narrow their options. “Present two or three acceptable choices to your child,” says Kantor. “This way you can give them a feeling of contribution, but they don’t have carte blanche to paint the ceiling in sparkle glitter.”

Best Playroom Tip: Make play stations where different toys are organized. “For example, keep the dress-up station in one area, the blocks in another, and the trains somewhere else,” says Kantor.

Get the Look: Play table, benches, and credenza from Ducduc; sectional from Cisco Brothers; carpet from ABC Carpet & Home; foosball table from All Modern; lighting from Circa Lighting; and shades from The Shade Store.

“The room layout is the first thing to consider,” says Tara Kantor, local homeowner and owner of Tara Kantor Interiors. “You need to determine what setup will be most conducive to the way your children play. [That] changes so much as they grow older, so you need to make some decisions based on that. You don’t want to spend a lot of effort or money on a playroom that the children won’t want to be in by the time they turn 10.”

For example, an art table for younger children can be used as a game or card table as they get older, or the area devoted to a train table might become a perfect spot for a foosball table down the road. “It’s important to consider future, as well as present, use of space,” says Kantor.

Storage is also key in a playroom. In this particular room, there is a lot of hidden storage. “The toys are all there but not visible,” says Kantor. “The four pieces of the play-table top slide off, and underneath are Legos, Magna-Tiles, and Playstix. The two benches also

have storage compartments underneath where I store board games and blocks. Additionally, hidden storage was built into a part of the wall that holds more board games.”

Kantor also suggests having stylish storage buckets in fun colors scattered around the room for easy cleanup after playtime. In addition to good storage, Kantor also recommends having good seating. “I love soft poufs, ottomans, and beanbags for play spaces,” she says. “Not

only do they provide extra seating, but kids always find a way to use them as toys, whether it’s creating an obstacle course, making a fort, or just jumping on them.”

And, Kantor adds, in this day and age, when kids spend so much time on iPads or other electronic devices, “creating a space that is appealing is even more important. Really think about how your kids play, what their needs are, and what kind of space would be most inviting — not just for your kids, but for friends too.” ■■■

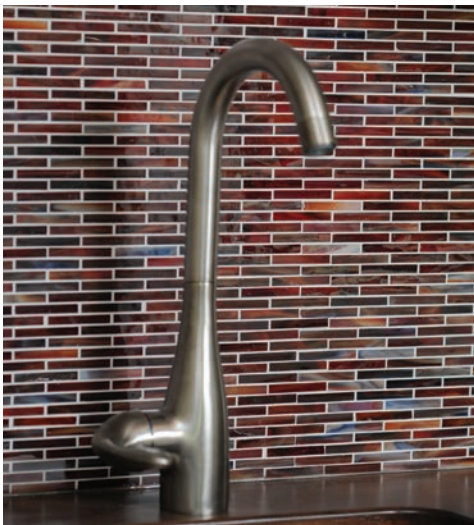




Seasons Too

1331 Boston Post Rd., Larchmont, NY (914) 834-0433
 836 Post Road, Darien • (203) 655-8444 • 81 Fields Lane, Brewster, NY (845) 278-0377
www.seasonstoo.com • seasonstoo@aol.com

*When You're the Best of Westchester,
 You're the Best of Anywhere!*



Voted
 "Best Tile Selection"
 2007-2016



BRIARCLIFF MANOR
 525 North State Road
 914.923.4295

FISHKILL
 1115 US 9
 845.298.7737

www.TerraTileAndMarble.com

Color Us Happy

Meet interior designer and color expert Debra Kling and find out where she gets her inspiration, what she loves, and how she colors the world around her.

Who: Interior designer and color expert Debra Kling, principal, Debra Kling Colour Consultant, Larchmont

Inspiration: Her clients — “the way they live, both within and outside their walls; their travels; collections; and what speaks to them aesthetically.”

Best Tip: “Small spaces don’t need to be light colors to make them appear larger, and ceilings don’t have to be white to make them appear higher.”

Colors on Her Radar for Spring: Pearlescent whites; pinks; and greenery, Pantone’s Color of the Year

Go-To Home Design...

Blogs: *Remodelista, Design Sponge, Design Milk, Apartment Therapy, A Beautiful Mess*

Shelter Mags (Other Than Westchester Home): *Dwell, Architectural Digest, Domino*

Websites: *Pinterest, Houzz, Dering Hall, Google SketchUp*

TV Shows: *Home by Novogratz, House Hunters International, Secrets From a Stylist*

Local Shops/Showrooms: Rye Ridge Ceramic Tile (Port Chester), Village Paint (Larchmont), Artistic Tile (White Plains), Oomph Home Furnishings (Greenwich), Design Within Reach (Stamford), Weber Fine Arts (Scarsdale/Greenwich), AKDO Tile (Norwalk)

Manhattan Shops/Showrooms: ABC Carpet & Home, Nemo Tile, Designer’s Guild

Designers/Brands: Eskayel, Stark Carpet, Donald Kaufman Paints, Modern Masters, Benjamin Moore, Farrow & Ball, Niche Modern Lighting



THE DESIGN DIRECTORY



ADAMS INTERIOR DESIGN

Finalist in *Westchester Home* 2017 Design Competition



Creating sophisticated and comfortable interiors that meet your family's unique needs.
Best of Houzz 2016-2014

Owner Melissa Adams Gruber
845-440-3135 • www.adams-design.com



CURRENT HOME

A MODERN AND CHIC HOME ACCESSORIES & GIFT BOUTIQUE
VOTED BEST OF WESTCHESTER

1096 WILMOT RD | SCARSDALE, NY | 10583 | 914.723.2462
SALES@CURRENTHOMENY.COM | CURRENTHOMENY.COM



LARAMICHELLE
BEAUTIFUL INTERIORS, INC.

THE AREA'S BEST INTERIOR DESIGN FIRM

Voted Best of Houzz 2017 in Customer Service in Fairfield & Westchester Counties • Finalist, Master Suite Design, Westchester Home Magazine 2017 Design Awards • Winner, Best Living Room Design, Westchester Home Magazine 2012 Design Awards

INFO@LARAMICHELLE.COM | (914) 939-5777 | LARAMICHELLE.COM



Winner of *Westchester HOME's*
2014 Design Contest for "Best Traditional Kitchen"

Since 1961 Our Service is Legendary



SLEEPY HOLLOW
CUSTOM KITCHENS

42 River Street • Sleepy Hollow, NY 10591
(914) 631-3101 • sleepyhollowcustomkitchens.com



Casa Blanca Tile & Stone

Your project design & budget is important to us.
Whatever You Need, Whatever Your Budget, We'll Take Care Of You.

400 Halstead Avenue • Harrison, NY 10528
 914-630-7469 • www.casablancatile.com
OPEN 7 DAYS!



Breathe new life into your outdoor lifestyle.

Transform your outdoor area with everything from outdoor kitchens and pergolas, to fence, gates, shower enclosures, and much more. Our structures are crafted in low maintenance AZEK, an advanced vinyl material that looks just like natural wood. To schedule a free design consultation, call **800-343-6948** or visit walpoleoutdoors.com



80+ years
Walpole OutdoorsTM
 Ridgefield, Stamford and Westport CT

PEOPLE TO KNOW

Favorite Products:



1.

2.

3.

1. Designer's Guild Roseto 100 percent cotton fabric (floral pattern)

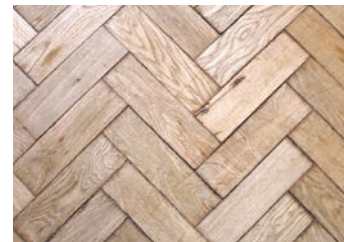
2. Farrow & Ball Full Gloss paint in a jewel tone (can simulate lacquered walls in a single application)

3. Benjamin Moore Advance paint in Chantilly Lace (new, environmentally friendly paint formula for windows, doors, woodwork, and trim)

4. Wood planks or ceramic tile lookalikes (in a herringbone pattern)

5. Eskayel wallpaper, pillows, and rugs

6. Minwax Special Walnut stain for wood floors (not too dark, not too light, not too precious)



4.



5.



6.



7.



8.

9.



10.

11.



7. Faux bois (wood-grain patterns) in wall coverings (Nobilis) and carpets (Stark)

8. Moss Studio Tibetan lamb ottomans

9. Modern Masters Metallic Paints in Pale Gold (gold is back — apply imaginatively)

10. Brightly colored Yves Delorme Provençal table linens (they never go out of style)

11. Custom-designed stained-glass linear mosaics for a kitchen backsplash



Full Interior Design Services

www.lifestylesandinteriors.com

4 Croton Point Ave.

Croton-On-Hudson, NY

914-862-4163

Online Home
Furnishings and Decor:

www.shopcrotonhome.com

MAX PARANGI ARCHITECTS P.C.
"Architecture of Distinction"
 Celebrating 30 Years in New York and New Jersey
www.MaxParangi.com

New York Office
 399 Knollwood Road, Suite 114
 White Plains, NY 10603
 Phone: 914.686.3359

New Jersey Office
 7 Daniel Drive
 Englewood, NJ 07631
 Phone: 201.567.5880

for over **65** years
COUNTY | Your **SMART HOME**
 TV & APPLIANCE | Store™

MONOGRAM



*Offer valid on select Monogram appliance packages purchased January 1, 2017 – December 31, 2017. See stores for details.

for over **65** years
COUNTY | Your **SMART HOME**
 TV & APPLIANCE | Store™

2770 Summer Street • Stamford, CT 06905

203-327-2630

www.countytv.com

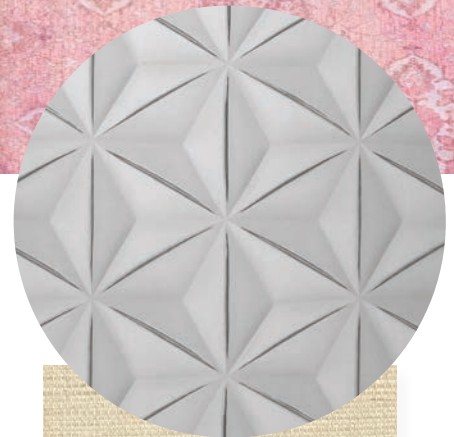
PEOPLE TO KNOW



12.



13.



14.

12. Colorful glass mosaic mirrors and consoles by Ercole

13. ABC's Color Reform Spectrum overdyed rug in pale pink

14. Phillip Jeffries Vinyl Origami wallpaper (beautiful and washable)

15.

15. Thibaut Shang Extra Fine Sisal grasscloth (available in a range of colors) ■■■





When Cookie Cutter Doesn't Cut it

BBPoolandSpa.com 888-399-0683



Making Dreams Come True Since '72
Complete Pool & Landscape Design / Build Services
Pools • Spas • Custom Masonry • Service • Supplies

Visit Our Showroom • 787 Chestnut Ridge Road, Chestnut Ridge, NY



Continuing Education Class Held at the Walker Zanger Showroom

Port Chester December 1

1 Michael Murphy of Murphy Brothers Contracting, Chris Reynolds of California Closets, Chris Hale of Sun Blue Energy, Rosana Cohen of *Westchester Magazine*, Sri Putagunta of Steven Winter Associates, Jennifer Yates of Yates Garden Design, and Ana Mantini of *Westchester Home*



2 Justin Loeber, Susan Kangas, Brian Berger, and Karen Naftelberg, all from California Closets

3 Jeff Lupica, director of Slab Sales at Walker Zanger, introducing the speakers



Private Lunch With Tara Kantor and Palate by Design

Scarsdale January 11

4 Michael Murphy of Murphy Brothers Contracting, Jenn Andrluk, executive editor of *Westchester Home*, and designer/host Tara Kantor

5 Palate by Design cooks Jennifer Curtis and Sharon Smolkin teach home chefs how to make healthy and delicious food during their classes.



6 Here, Curtis and Smolkin demonstrate how to make cauliflower pizza at the lunch hosted by Tara Kantor, Murphy Brothers Contracting, and *Westchester Home*.

Photos by Peter Krupenye

Authentic Bank Barns

OLD WORLD SKILL & CRAFTSMANSHIP



Quality isn't a goal; it's a way of life.

The success of an authentic bank barn project rests on expert engineering, quality materials and craftsmen who are skilled in timber frame construction. At B&D Builders, we are committed to bringing you all this in addition to our well-known eye for design, giving you a building that performs well and looks good for many years. You can depend on B&D Builders for professional planning, scheduling and management of your project.



Request a quote at 717.687.0292
or by visiting our website.



Discover More at CustomBarnBuilding.com

Westchester Magazine

It's Time to Celebrate the BEST!

SAVE THE DATE!
Wednesday, July 26, 2017
 Glen Island Harbour Club
 Tickets on sale now at bestofwestchester.com.

For Sponsorship opportunities, email sales@westchestermagazine.com or call 914.345.0601 ext. 138.
 For tickets and more info visit bestofwestchester.com.

PLATINUM SPONSOR ColumbiaDoctors

SILVER SPONSOR Avria SENIOR LIVING

Pepe Auto Group

LEROS

BENEFITTING CHARITY United Way

United Way of Westchester and Putnam



The Caravan Connection™

Hand-Knotted Antique & New Oriental Rugs • Custom Tibetan Carpets
 Contemporary and Transitional Rugs
 Cleaning, Appraisal and Repair Services Available

14 Main Street • Bedford Hills, NY 10507
 914-666-0227 • www.caravanconnection.com



Why Suffer with Cloudy or Drafty Windows?

Fibrex Composite Windows Withstand Hudson Valley Extremes



The only Certified Installer for Andersen Window Replacement and Warranty.

\$299 OFF
EACH WINDOW*

\$899 OFF
EACH PATIO DOOR*

NO MONEY DOWN NO PAYMENTS NO INTEREST FOR 1 YEAR*

The Problem With Poor Quality Vinyl Windows

The folks who make poor quality vinyl windows don't consider the Hudson Valley's temperature swings. With our extreme swings, vinyl windows expand, contract, warp and leak.

The Wrong Vinyl Replacement Window May Cost You Twice

When their seals break and their insulating gas is gone, your comfort goes away. And cloudy glass stays, causing you to have to replace them again.

Fibrex - A Technological Breakthrough In Window Design

Twice as strong as vinyl, without the maintenance of wood, Fibrex composite windows look beautiful and stand up to our extreme temperatures to maximize energy efficiency.

Do It Right The First Time

Call Renewal by Andersen for a 48-hour price quote with no obligation to buy.

Material Benefits	Andersen EXCLUSIVE		
	Fibrex	Vinyl	Wood
Insulating Properties	✓	✓	✓
Low Maintenance	✓	✓	
Resistance to Decay	✓	✓	
Structural Rigidity	✓		✓
Durable	✓		✓
Color/Finish Choices	✓		✓
Maximum Glass Area	✓		varies

CALL FOR A **FREE** IN-HOME CONSULTATION

(877)659-4238

RBAWestchester.com

2041 West Main Street, Stamford, CT

*Offer expires 3/18/17. Minimum purchase of 4 or more windows or patio doors. Offer does not include Bay/Bow Windows. Cannot be combined with prior purchases or other offers. Discount applied by retail representative at time of contract execution as part of Instant Product Rewards program which requires purchase during initial visit to qualify. 0% APR for 12 months available to qualified buyers on approved credit only. Not all customers may qualify. All financing is provided by third party lenders unaffiliated with Renewal by Andersen.

home front

IN THE GARDEN RENOVATION



Turn the page to learn how to start your own co-op garden, like the one shown here, and get ideas for creating a modern and functional kitchen.

How to Make a Co-op Garden Grow

Want to create a sense of community? Take a few lessons from a cooperative that blazed new ground to cultivate camaraderie.

With shade trees spreading their limbs, flowering shrubs dappled with flowers, blossoming annuals cheerfully packing containers with color, juicy vegetables waiting for harvest, and smiling cooperative members communing with nature and each other, a garden is the pride of the Claridge cooperative in White Plains. There was a time when the area was nothing more than a bare roof above a parking garage, so boring that any apartment overlooking the area sold for 15-20 percent less than units facing away. Throwaway space for the condos, the roof harbored no plant life and had no redeeming qualities whatsoever. "It looked like a prison yard," was the general sentiment. But one shareholder had the vision to transform that idle footage into an engaging landscape.

The garden was a hard sell. At first, nobody took co-op board president Joseph Camastra's proposal seriously. But it was the only way that the forward-thinking former contractor would agree to remain a resident of the two-building, 200-family apartment complex built in 1950. He had a plan to convert the 17,000 sq ft concrete deck in the center of the complex into an oasis — and he did the math to make the budget work. The building went co-op in 1984, but 53 of the 200 units were owned and rented out by the co-op. As renters left, Camastra renovated (acting as building contractor to save money) and sold those units to fund the project.

He began modestly in 2007, with a 20'x20' section of awning-covered outdoor space off the main lobby. Residents applauded the improvement. Dangling that triumph before the shareholders, Camastra got the buy-in for the rest of the project. Baby step by baby step, the garden was expanded to its current splendor — finished in 2015, with 32 trees in 6'x6' cedar containers, a pergola, seating areas, dining and lounging sections, night lighting, three fountains, and vegetable containers "farmed" by residents. Units facing the landscape now sell for 15-20 percent more than apartments with no garden view.





COLOR OF THE YEAR 2017
Allusive & Enigmatic,
SHADOW

2117-30



Rich, royal amethyst
Indulge your mysterious side.
Let Shadow set the mood.

Come in today for your complimentary book

BUY ONE PINT COLOR SAMPLE, GET ONE FREE*



N. WHITE PLAINS 30 VIRGINIA ROAD 914-948-4000	PORT CHESTER 143 NO. MAIN ST. 914-939-7600	BEDFORD HILLS 655 N. BEDFORD ROAD 914-241-1666	MOHEGAN LAKE 1948 E. MAIN ST. 914-528-6111	YORKTOWN 1965 COMMERCE ST. 914-962-3000
---	--	--	--	---



523906010589
WHM
SPRING

OSSINING
22 ROCKLEDGE AVE.
914-941-1900

SCARSDALE
836 POST ROAD
914-723-4811

YONKERS
621 TUCKAHOE RD.
914-779-6767

MAHOPAC
537 ROUTE 6
845-621-1131

CARMEL
1924 ROUTE 6
845-225-6613

NEW LOCATION!
PELHAM
148 FIFTH AVENUE
914-738-4778

wallauer.com

Email Address _____

*This offer may only be redeemed at Benjamin Moore dealer listed above. Must present this coupon to redeem. Subject to availability. Only original offer will be honored, no photocopies or faxes will be allowed. Limit one per household. While supplies last. Benjamin Moore has the right to cancel this offer at any time. Offer can not be combined with any other offer or discount. Please note a printed rendition of painted substrates can only approximate the actual color on the painted surface. Color accuracy is ensured only when tinted in quality Benjamin Moore® paints. Color representations may differ slightly from actual paint. Expiration date: December 31st, 2017. ©2016 Benjamin Moore & Co. Benjamin Moore, Paint Like No Other, and the triangle "M" symbol are registered trademarks licensed to Benjamin Moore & Co.

Offer expires 12/31/2017



Cornell Carpet & Design

Three Generations of Excellence

174 Harris Road, Bedford Hills, NY 10507
914-241-1227

Photo Featuring L&M Custom Carpets

IN THE GARDEN

How do they make it work? Ask Camastra, and he will talk about decking material (he favors Trex composite wood-alternative decking) combined with building/financial savvy. Ask Robert Kulka, the board member who serves as garden caretaker, and he will point to watering, maintenance, and aesthetics. Together, they make magic happen.

Here are some of their suggestions for making your own co-op garden work:

Find a leader. You need someone with a vision and tenacity to see the project to fruition. The Claridge cooperative community agrees that Camastra's dedication to the project made its green space possible.

Creatively explore space for a garden. When Camastra originally proposed the idea, fellow board members didn't believe that their eyesore parking-garage roof could possibly shoulder a garden. Camastra proved them wrong.

Do your homework. Consult local regulations and get any building-permit approval necessary from your town or city. Do it right: Put safety first.

Get expert advice. Hire professional engineers to explore the options and check safety issues. At Claridge, engineers examined the beams of the roof to make sure they could handle the weight of a garden.

Do the math. Before purchase, all building materials ("every plank," according to Camastra), each tree (figuring in its mature size), and every bag of soil was carefully weighed for compliance.

Research materials. To fill containers, Camastra ordered 800 bags of lightweight soil mix with good drainage from Long Island.

Don't rush in. Start gradually and be realistic about the changes your community is willing to accept. The Claridge community expanded the garden section by section.

Think about the future when funding. Keep in mind that a project will require a dedicated maintenance budget.

Hire a savvy landscape architect. You need an expert to oversee plant selection. Thanks to careful research, the trees selected for the Claridge garden are cultivars that remain shorter than two stories tall and are suitable for growing in containers.

Enlist residents. Don't depend solely on groundskeeping staff for the garden's maintenance. The garden will need an overseeing committee, as well as at least one dedicated resident to help with daily maintenance. Kulka shares the watering, pruning, grooming, and deadheading duties with paid staff. Other residents help. "The garden creates a sense of community among the people who take part in it," says Kulka.

Think small. Rather than one big, open space, divide the area into intimate spaces where residents can eat, play, and rest. Furniture, tables, and dining areas complete the floor plan; focal points such as vines on trellises, an arbor, and fountains create a park-like mood.

LIGHT UP THE NIGHT




DESIGN LIGHTING BY MARKS

914-747-7777 203-674-8038 201-343-9266

See the night in a whole new light.
Enhance the beauty of your home—from the inside out.
Dramatic • Secure • Serene
Call our professionals today. Enjoy moonlit effects forever.

*To call other companies competition
might be giving them too much credit.*

Email us at Mark@DesignLightingByMarks.com
www.DesignLightingByMarks.com

 **Johnsen**
Landscapes & Pools

evocative landscapes that capture the essence of a place

johnsenlandscapes.com
914.666.4190
(WC-05561-H93 & PC6227)



**Gregory Sahagian
& Son, Inc.**
18 North Central Avenue
Hartsdale, NY 10530
(914) 949-9877

A Full Service Awning Company Since 1990
Fully Licensed and Insured LIC.# WC-10266-H99

Visit us online @ www.gssawning.com
or contact us @ info@gssawning.com

Get Spring-time ready!

Transform your deck, patio, or terrace into an extra living space that everyone will enjoy. Maintain the traditional appearance of your home by installing a stationary awning or create a more contemporary look with a retractable system. Our awnings allow you to maximize your outdoor living space, provide relief from the sun's harmful rays, reduce energy costs and create an elegant expression of your personal taste and style.



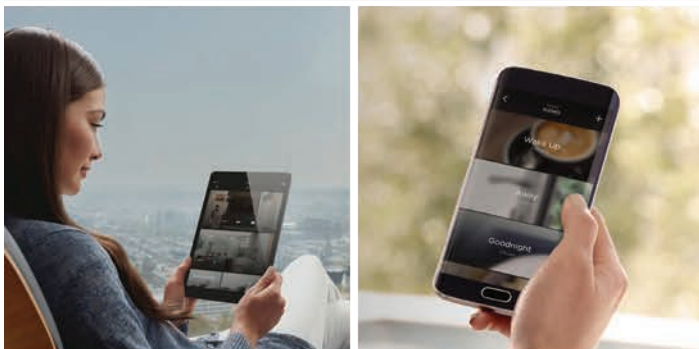
ELEVATED

INTEGRATION



ELEVATE YOUR EVERYDAY

Customize your home to match the way you live exactly the way you like it. From lighting and climate to entertainment and security, you'll be able to personalize your home and control it all with a touch from a single app.



LIGHTING • SHADING • AUDIO • VIDEO • HOME THEATRE
WIFI • CAMERAS • SMART HOME • AUTOMATION

GET ELEVATED!

WWW.ELEVATEDINTEGRATION.COM

P: 914.374.2046 E: getelevated@elevatedintegration.com

SAVANT

McIntosh

LUTRON

IN THE GARDEN



Have backup plans.

Install irrigation, but keep in mind that hand-watering might be necessary. Assign people to monitor the garden for glitches.

Be realistic about plantings.

Watch how the sun shifts in the space and discuss those realities with landscape designers. Residents might request their favorite plants, but they may not be right for the space.

Get everyone

involved. At Claridge, residents are offered the opportunity to grow their own planter boxes by lottery. Some grow vegetables (tomatoes, eggplants, and cucumbers are favorites); others cultivate herbs (basil is omnipresent) or flowers. It gets the community invested.

Make it safe. The garden at Claridge is accessible only from inside the building (thus, no street access). That fact proved difficult for delivering building materials, but it makes the area secure for residents. When laying out the area, remember that kids

will be kids, so make sure railings and planters are appropriately placed.

Use the space for good.

Encourage residents to spend time outdoors; talk up the beneficial butterflies and birds the venue will host. At Claridge, the space went from an environmental gray zone to an oasis as soon as the garden started blooming, proving the “plant it, and they will come” adage.

Celebrate your

garden. The Claridge cooperative has implemented an annual barbecue, to bring the community together in the garden. Members are encouraged to invite friends, to show off their “park,” spreading the pride. ■■

HunterDouglas

DUETTE® WINDOW SHADINGS

JANUARY 14 - APRIL 10, 2017 | \$100 REBATE*

on qualifying purchases of the beautiful Hunter Douglas window fashions*



1 ea. Duette® Vertiglide™ honeycomb shade
\$100 EACH ADDITIONAL UNIT

2 ea. Vignette® Modern Roman shades
\$100 EACH ADDITIONAL 2 UNITS

4 ea. Duette® honeycomb shades
\$100 EACH ADDITIONAL 4 UNITS

4 ea. Solera® soft shades
\$100 EACH ADDITIONAL 4 UNITS

\$25 OFF per unit

Silhouette® and Nantucket™ Window Shades
Vignette® Modern Roman Shades
Luminette® Privacy Sheers
Pirouette® Window Shades
Solera® Soft Shades

Hunter Douglas
With this coupon. Not to be combined with any other offers.
Offer valid through April 10, 2017

\$200 OFF

Custom Window Treatments of \$2,000 or more.

With this coupon. Not to be combined with any other offers.
Offer valid through April 10, 2017

Discover Westchester's Designer Showrooms

White Plains, Carmel, Bedford Hills and Port Chester



- Hunter Douglas Window Fashions
- New Style® hybrid shutters, Motorized & Home automation
- Custom Fabric Window Treatments
- Custom Bedding Ensembles
- Carpeting, Runners & Area Rugs
- Custom Reupholstery and Designer Fabrics
- Custom Furniture and Exclusive Wallcoverings



Follow Us on Facebook or Twitter

Wallauer's
Design Center

PAINTS • WALLCOVERING • WINDOW TREATMENTS • IN-HOME DECORATING

For free interior home decorating advice — Call or visit one of our convenient locations. For more information go to www.wallauer.com

Headquarters
N. White Plains
30 Virginia Rd.
914-948-4000

Bedford Hills
655 N. Bedford Rd.
914-241-1666

Carmel
1924 Route 6
845-225-6613

Mohegan Lake
1948 E. Main St.
914-528-6111

Ossining
22 Rockledge Av.
914-941-1900

Port Chester
143 N. Main St.
914-939-7600

Scarsdale
836 Post Rd.
914-723-4811

* Manufacturer's mail-in rebate offer valid for qualifying purchases made 1/14/17 – 4/10/17 from participating dealers in the U.S. only. A qualifying purchase is defined as a purchase of the product model set forth above in the quantity set forth above. If you purchase less than the specified quantity, you will not be entitled to a rebate. Rebate will be issued in the form of prepaid reward card and mailed within 6 weeks of rebate claim receipt. Funds do not expire. Subject to applicable law, a \$2.00 monthly fee will be assessed against card balance 7 months after card issuance and each month thereafter. Additional limitations may apply. Ask participating dealer for details and rebate form. © 2017 Hunter Douglas. All rights reserved. All trademarks used herein are the property of Hunter Douglas. SUM15MB3

Open House

This kitchen has it all: kid-friendly amenities, lots of tools for a seasoned cook, and a style that suits those who use it.



When the Kantor family moved from New York City to Scarsdale, where they built their “Hamptons-esque” shingle-style home, designer and homeowner Tara Kantor had a clear vision for the light, airy interior. “We wanted everything to be open,” says Kantor, who loves entertaining and relished the added space of her new suburban house (designed by architect Len Brandes). The connected kitchen, dining space, and family room spans nearly 50 feet, but elements such as beams and lighting help to define each area. “We wanted everyone to be at the same place at the same time with no divisions,” she says. “You can have 40 people in this room, and it doesn’t feel crowded at all. We have a very big family, so this has been a really useful room.”

What’s the secret to cooking for dozens of friends and family members?

Kantor says she does almost all the prep work before her guests arrive, and her top-of-the-line appliances

(twin sets in some cases) are more than up to the task. A full Sub-Zero fridge and a full Sub-Zero freezer flank a counter above a bank of drawers, while a Wolf range, a Wolf microwave drawer in the island, and a second oven and microwave to the right of the main stove allow for cooking and heating many dishes at once.

Special holiday platters and serving pieces are stored in the butler’s pantry; a duo of dishwashers and pullout garbage drawers make cleaning up after the party that much speedier. “I’m no Martha Stewart by any means,” she says. “But we have come up with a system where I’m able to have 30-plus people, and it’s become easy.”

Another priority for the Kantors: a kid-friendly zone for their sons, ages 5 and 8. Kantor started hunting for stylish, family-friendly furnishings even before her builder, Murphy Brothers Contracting, broke ground. Her first purchase: a reclaimed wood table from Mecox Gardens, with an aged surface that’s forgiving to scratches and

WESTCHESTER HOME DESIGN AWARDS 2017



Save the Date!

APRIL 12, 2017
6pm-9pm

Performing Arts Center at Purchase College
Purchase, NY



Special Guest Host
VICENTE WOLF

Winners will be announced LIVE at our 2017 Design Awards Celebration! Finalist projects will be featured in the Spring issue of Westchester Home and at westchestermagazine.com/designawards.

SPONSORED BY



Bilotta

CALIFORNIA CLOSETS™

CONSOLIDATED
PLUMBING SUPPLY



For tickets, more information and pictures from last year's event, visit westchestermagazine.com/designawards.

For sponsorship information, call 914-345-0601 ext. 138 or email sales@westchestermagazine.com.

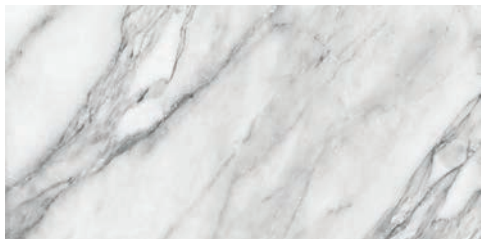
Get the Look

Shop this list to get a similar look in your own kitchen.



Pendant Above Table

Arteriors Thornton Pendant, \$1,800
www.arteriorshome.com



Countertop and Backsplash

Honed Danby Marble, \$150 per sq ft
Marble America
535 5th Ave
New Rochelle
914.632.3110



Lights Above Island

Mini Sputnik Chandelier, \$1,495
Jonathan Adler
88 Greenwich Ave
Greenwich
203.622.1476
www.jonathanadler.com



Stools

Gage Leather Bar Stool (for Similar Style), \$1,620
Mitchell Gold + Bob Williams
45 E Putnam Ave
Greenwich
203.661.4480
www.mgbwhome.com



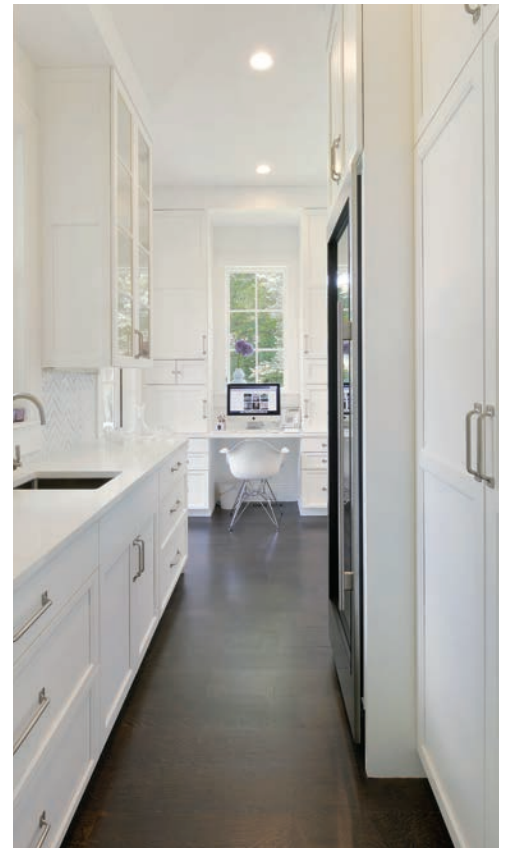
Paint

Benjamin Moore Shoreline
Wallauer's
134 Main St
Port Chester
914.939.7600
www.wallauer.com



Table

Galen Teak Plank Outdoor Farm Dining Table, \$4,350
Mecox Gardens
962 Lexington Ave, New York, NY
212.249.5301
www.mecox.com



dings. Around the Danby marble-topped island, the Mitchell Gold barstools are covered in a stain-resistant, leather-like vinyl fabric that Kantor sourced. “Not everyone knows you can use your own material on Mitchell Gold chairs,” she notes. Kantor worked closely with Ryan Schildwachter from Murphy Brothers to fine-tune the drawings for the custom-cabinetry layout, which keeps the boys in mind with features such as a refrigerated drink drawer and snack drawers at their level. Glass-front cabinets house everyday dishes and glasses, putting the basics in plain view and close to the dishwashers.

Though this layout works beautifully for the family, as a designer, Kantor stresses that each project is unique to the client, and the classic kitchen “triangle” is just one part of the equation. “You have to think about how you use your kitchen and design it for the way you live,” she advises. In her case, that means a chic, comfortable, streamlined space that invites extended family and friends to come on in and stay awhile.

Contracting and cabinets by Murphy Brothers Contracting. Architecture by Leonard Brandes Architect. ■■■

captivating.
serene environments for your life.
inspired by nature.



JOHN JAY
LANDSCAPE DEVELOPMENT

www.landdesign.net
johnjay@landdesign.net
914.232.0399

Finest selection of
contemporary
European stoves
and fireplaces

WITTUS
FIRE BY DESIGN

Happy
Pizza
Oven



40 Westchester Ave 914.764.5679
Pound Ridge NY www.wittus.com



MATTHIEU SALVAING

ARCHITECTURAL DIGEST
DESIGN SHOW

MARCH 16-19, 2017 | NYC

BUY TICKETS NOW

ADDesignShow.com

PRODUCED BY:

the **MART** A VORNADO PROPERTY

DIFFA
DESIGN
NOTHING
BUT
AIDS

CO-LOCATED WITH:

DIFFA'S DINING BY DESIGN
New York 2017, diffa.org

SPONSORED IN PART BY:

JENN-AIR®

     ADDesignShow



Voted
"Best Kitchen
and Bath Design"

General
Contracting
Company

Design Excellence
Superior Craftmanship
Custom Millwork
27 years experience



*Come visit our beautiful
Showroom and Millwork Shop:*

**Top Drawer
Custom Cabinetry**

719 Main St., New Rochelle, NY 10801
914-632-4222 • topdrawercc.com



Life is better with power.



GENTECH LTD

Generators Are Our Only Business
Complete Sales & Service of Generators
gentechltd.com | 845.568.0500

*Generac Automatic
Standby Generators offer
24/7 power protection
and hands free operation.*



Authorized Dealer of

GENERAC®



6th Annual Design Awards

AND THE FINALISTS ARE...

This year, we've expanded our Design Awards to include more than 20 categories. We were overwhelmed by the talent and beautiful craftsmanship here in our backyard, and we know you will be, too. Flip through the following pages, then go online to see even more amazing designs before voting for your favorites.

By Jenn Andriik

BEST USE OF COLOR

Sara Touijer Touijer Designs

LOCATION: MAMARONECK

This house is located very close to the Long Island Sound, so designer Sara Touijer drew inspiration from the water. For the color palette, she used different variations of blue. She started literally from the ground up — with the rug, which gives a subtle nod to the water. And because this home is for a family of five and their pet, elegance, durability, and coziness were all priorities. The family also loves Art Deco, so the designer brought that style into certain rooms, complementing the transitional look of the spaces.

Photography by: Reagan Wood



Lisa McTernan Lifestyles and Interiors by Lisa

LOCATION: SCARSDALE

The goal for the design of this den was to set it apart from the rest of the light-filled house and create a cozy cocoon. Designer Lisa McTernan chose a soft palette of grays to create this look. The monochromatic canvas is dotted with deep blue, and the original art is by Staszek Kotowski.

Photography by: Phillip Ennis

Tiffany Costanzo C Studio Design *See photos on page 55*

LOCATION: RYE

The client for this dining room, which was part of a larger project, wanted big and bold, so the designer answered with citrine curtains, gold-and-navy chairs, and custom-designed wallpaper. The marble table plays off the patterned wallpaper, and the room is spattered with bright hues. It all comes together in a modern and unique design.

Photography by: Caroline Garbutt

Claire Paquin Clean Design Partners

LOCATION: HARTSDALE

This room is the hub of the home, as it is open to the kitchen and the breakfast area and gets a lot of traffic. This family of four moved from Madrid and is well-traveled, so they wanted this space to be functional while showcasing their personalities and experiences. The vibrant color scheme flowed from the bold, geometric drapes that are the focal point of the space. Designer Claire Paquin kept the rug and upholstery pieces neutral, to let the bold colors really shine.

Photography by: Reagan Wood



CHILDREN'S ROOM

Daniel Contelmo
Daniel Contelmo Architects

LOCATION: PLEASANT VALLEY

This bedroom is part of a larger barn/out-building renovation. The main feature of this child's room are the custom-designed bunk beds — a favorite for weekend sleepovers. The bed frames and rails are made from antique barn beams; the bottom bunks are double beds to maximize use of the space. The design is rustic, all-American, and fun.

Photography by: Daniel Contelmo Jr.



Lisa McTernan
Lifestyles and Interiors by Lisa

LOCATION: SCARSDALE

This bedroom, which was designed for a young teen, was made to be “playful enough for her to enjoy yet sophisticated enough to grow with her,” explains designer Lisa McTernan. McTernan started with the wallpaper, which inspired the color palette, and the artwork is by Sandy Shapiro, which added a bit of modernity. Clean lines and a mixture of textures give the room a cozy feel.

Photography by: Philip Ennis



Lisa Tessler Link Interior Design

LOCATION: SCARSDALE

The 10-year-old girl this bedroom belongs to loves purple, and it shows in the sweet design by Lisa Tessler. The little girl is also sporty, so Tessler opted for a bold, graphic print on the walls rather than something overly girly. The ceiling was painted in a deeper purple, to draw the eye up to the Robert Abbey chandelier. Other details were kept in grays and whites, to soften the room with a touch of maturity for the child as she grows.

Photography by: Aggie Photography



DINING ROOM

Claudia Tejada Claudia Giselle Design

LOCATION: BRIARCLIFF MANOR

This dining room designed for a family who love to entertain mixes traditional and modern. The wainscoting and crown molding add formality, while the mix of wood-and-brass detailing and the gold-and-gray palette add a contemporary touch. The challenge in this room was providing the option to host a variety of party sizes without crowding the space. This was achieved by using a custom expandable rectangular table that can accommodate 12 guests. There is also a custom sideboard for storing fine china, silverware, and crystal.

Photography by: Garrett Rowland



DINING ROOM

Tiffany Costanzo C Studio Design

LOCATION: RYE

The homeowners, who love color and pattern, wanted something big and bold in their dining room, so the designer went for it. The color and the furniture and accessory choices are striking yet elegant, and they tie in with the rest of the house. "I think the dining room ultimately [incorporates] the elements used throughout and takes them up a notch, so it is really the most luxurious public space in the house," says designer Tiffany Costanzo. The curtains are bright citrine; the patterned wallpaper brings out the marble in the dining table. The chairs, in gold and navy blue, add glamour yet work well with the contemporary light fixture.

Photography by: Caronine Garbutt



DINING ROOM

Rajni Alex Rajni Alex Design

LOCATION: LARCHMONT

The challenge for this design was to make a small space look bigger while including a large dining room table that already belonged to the homeowners. Designer Rajni Alex chose a light and airy wallpaper called Strata, from Apparatus Studio, to add texture. He also installed a mirror, to add glamour and bounce light, a trick that makes the room seem larger than it is. The Robert Abbey chandelier was also already in the possession of the homeowner. To complement it, Alex chose white-linen curtains with shimmering Holly Hunt trim. They were layered with Hartmann & Forbes woven shades. The area rug was chosen so as not to fight with the space, completing the serene yet glamorous vibe.

Photography by: Jane Beiles





ENTRY HALL OR MUDROOM

Daniel Contelmo Daniel Contelmo Architects

LOCATION: CHAPPAQUA

What used to be a long corridor was transformed into a functional mudroom for an active family of four. A laundry room and bathroom were relocated to create a space large enough for ample storage, including custom built-ins on both sides of the room, shoe cubbies, and a small area for rinsing muddy shoes or the family dog.

Photography by: Daniel Contelmo Jr.



Radoslav Opacic Opacic Architects

LOCATION: SCARSDALE

This beautiful Normandy Tudor was built in the 1920s and needed extensive interior renovations. The existing entry was gutted and redesigned to feel elegant and open, with raised ceilings, a new limestone floor, and Venetian plaster walls. The railing was custom designed with architectural bronze, and the leaded stained glass in the new entry door carries the same design motif. The contractor was Hobbs Inc.; custom railing by Les Métalliers Champenois; leaded stained glass by LaRanger Studio Inc.; and interior design by Nancy Boszhardt Inc.

Photography by: Philip Ennis



Kim Annick Mitchell KAM Design

LOCATION: LARCHMONT

The homeowner wanted something unique and colorful, with added character. The inspiration came from the front-door color, Benjamin Moore's Caponata, a sophisticated eggplant hue. A subtle Hudson Haze plum grasscloth was used on the walls in the foyer; a platinum fiddle-back sycamore campaign desk is elegant but functional, serving as a place for mail and keys; and a brushed-brass pendant light adds a bit of drama to the small space. A chevron area rug in shades of gray, with gray stair carpeting, completes the look.

Photography by: Kim Annick Mitchell



Carol Kurth FAIA, ASID
Carol Kurth Architecture and Carol Kurth Interiors

LOCATION: BEDFORD HILLS

Clover Hill Farm is a 21-acre Old World farmstead “set against a warm, stone palette and verdant landscape,” says Carol Kurth, FAIA, ASID. Although the tract may seem simple at first glance, it is sculptural and elegant. In the front of the house, the designer created a new arrival sequence and landscaped courtyard with large, purple globe alliums to welcome guests. Modern quadrangle gardens are situated around the house, providing raised beds for the client’s organic farm-to-table garden. There are plenty of areas to entertain or sit and take in the beautiful views.





Juan Ospina Scenic Landscaping

LOCATION: PELHAM MANOR

This large-scale landscaping project included the addition of a spa room, pergola entertainment room, full bar, and kitchen, including a pizza oven, BBQ, and seating for eight. Everything was made from marble, so there was a lot of coordination with the Turkish company providing the material and the masons. The front of the home was also reconfigured to include new stone veneers, walkways, Belgium-block detailing, urn plantings, and outdoor lighting. SDR Designs provided drawings for this project.

Photography by: Heather Knapp and Tim Kuder



LANDSCAPING

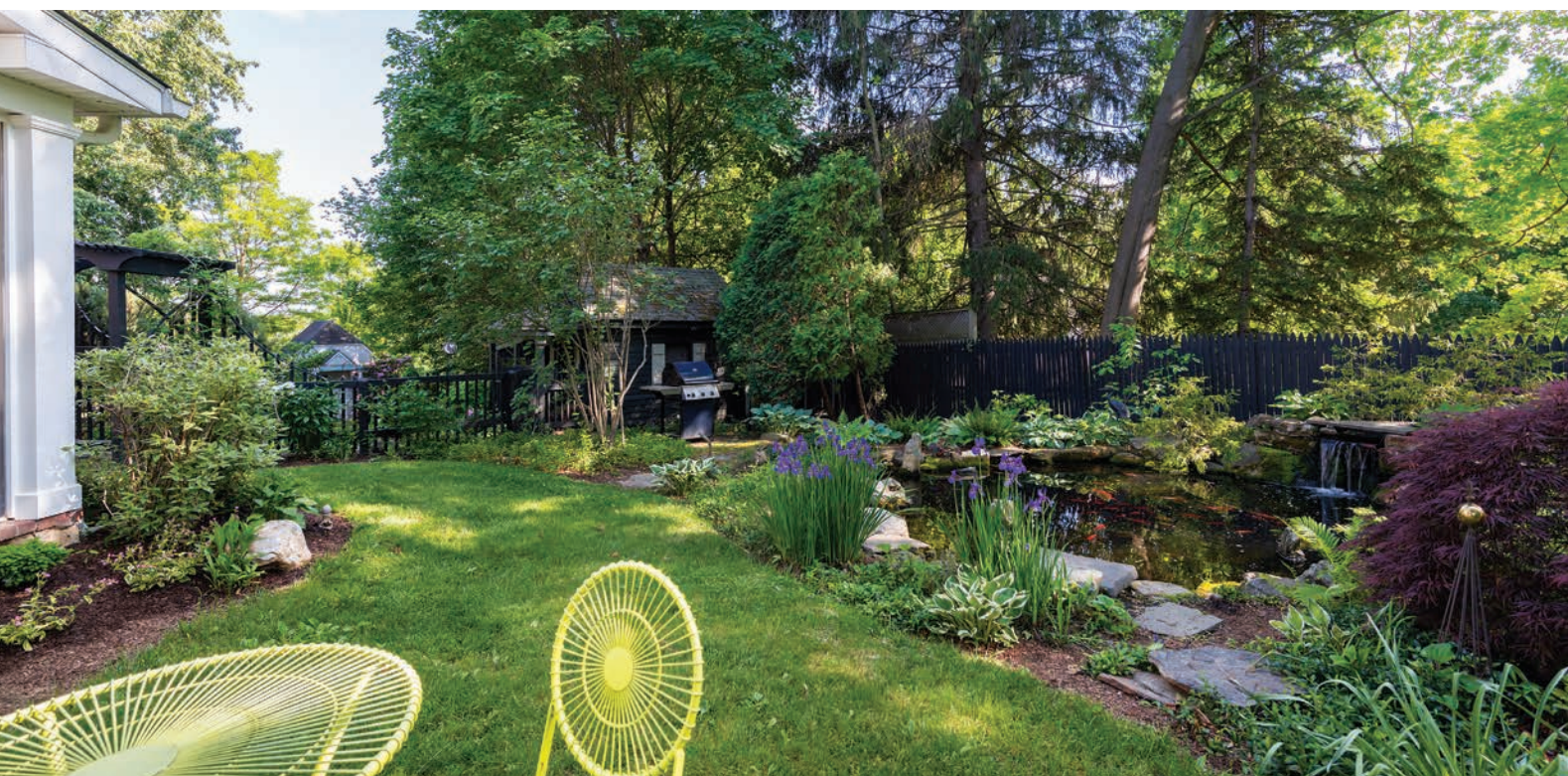
Daniel Contelmo

Daniel Contelmo Architects

LOCATION: POUGHKEEPSIE

This home built in the 1950s had a private yard, but it was nothing special. The homeowners wanted to create mini-gardens around the entire house and began by adding a koi pond. More plants were slowly added. The final phase — an outdoor living area, firepit, vegetable garden, and chicken coop — created distinct and unique spaces throughout their yard. The entire project was done in three phases over five years.

Photography by: Daniel Contelmo Jr.

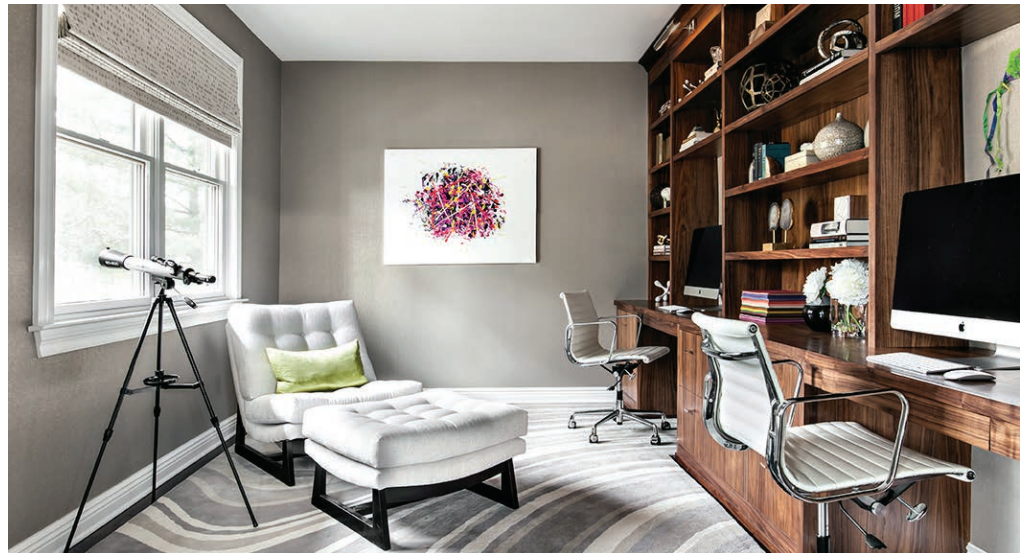


Claire Paquin Clean Design Partners

LOCATION: EASTCHESTER

The goal for this home office was to give the homeowners and their children a space equally conducive to doing work and homework or to relaxing and reading a book. The husband wanted a more traditional design, while the wife wanted the space to be fun and funky. The result is a mix. For example, custom built-ins by Henry Agudelo Architectural Woodworking were done in walnut, giving the space an Old World library feel, while metallic linen wall-paper, a large, tufted slipper chair, and custom swirl rug are quite modern.

Photography by: Regan Wood



Katherine Stern Katherine Stern Design

LOCATION: HASTINGS-ON-HUDSON

The inspiration for this project came from the beautiful Federal bones of the house itself and the husband's appreciation of industrial buildings and equipment. A dynamic tension developed by furnishing light fixtures and side tables in almost brutish, industrial materials. This project included the installation of built-ins by Hudson Cabinetry Design, the fabrication of window seats and treatments, a redesign of the fireplace mantel and surround, and the addition of new furnishings.

Photography by: Adam Kane Macchia



Daniel Contelmo Daniel Contelmo Architects

LOCATION: CHAPPAQUA

The standout feature of this library and home office is the rich mahogany used throughout. A rigid grid of beams frames the ceiling fixture and creates interest. In the office, built-ins frame the windows; in the library, bookshelves line three walls and house a large book collection. The floor plan allows for ample furniture but also creates a cozy and inviting feel.

Photography by: Roger William

LIVING SPACE



Claire Paquin Clean Design Partners

LOCATION: PELHAM

This house is a beautiful Victorian built in 1900 with large, open spaces running across the front of the house, including the living room, foyer, and dining room, so they are all visually connected. The frequency-pattern drapes in the living room inspired the jewel-tone palette featuring berry-purple and teal. Curved-back chairs, a smoky gray acrylic table, and a ribbon light fixture add funky touches to this colorful living space.

Photography by: Regan Wood



Sylvain Côté Absolute Green Homes

LOCATION: SCARSDALE

This brand-new living space was transformed from a storage area into a multifunctional room. Although it is not the main living space in this Scarsdale home, it certainly could function as such, thanks to its open design and ample amenities, including games, large TVs, seating areas (perfect for any game day), a bar, and a wine cellar. The sliding barn door allows the space to be compartmentalized, so kids and grown-ups can be together but not cramp one another's style. And though the room is in the basement, it certainly doesn't feel like it, thanks to natural light.

Photography by: Sylvain Côté



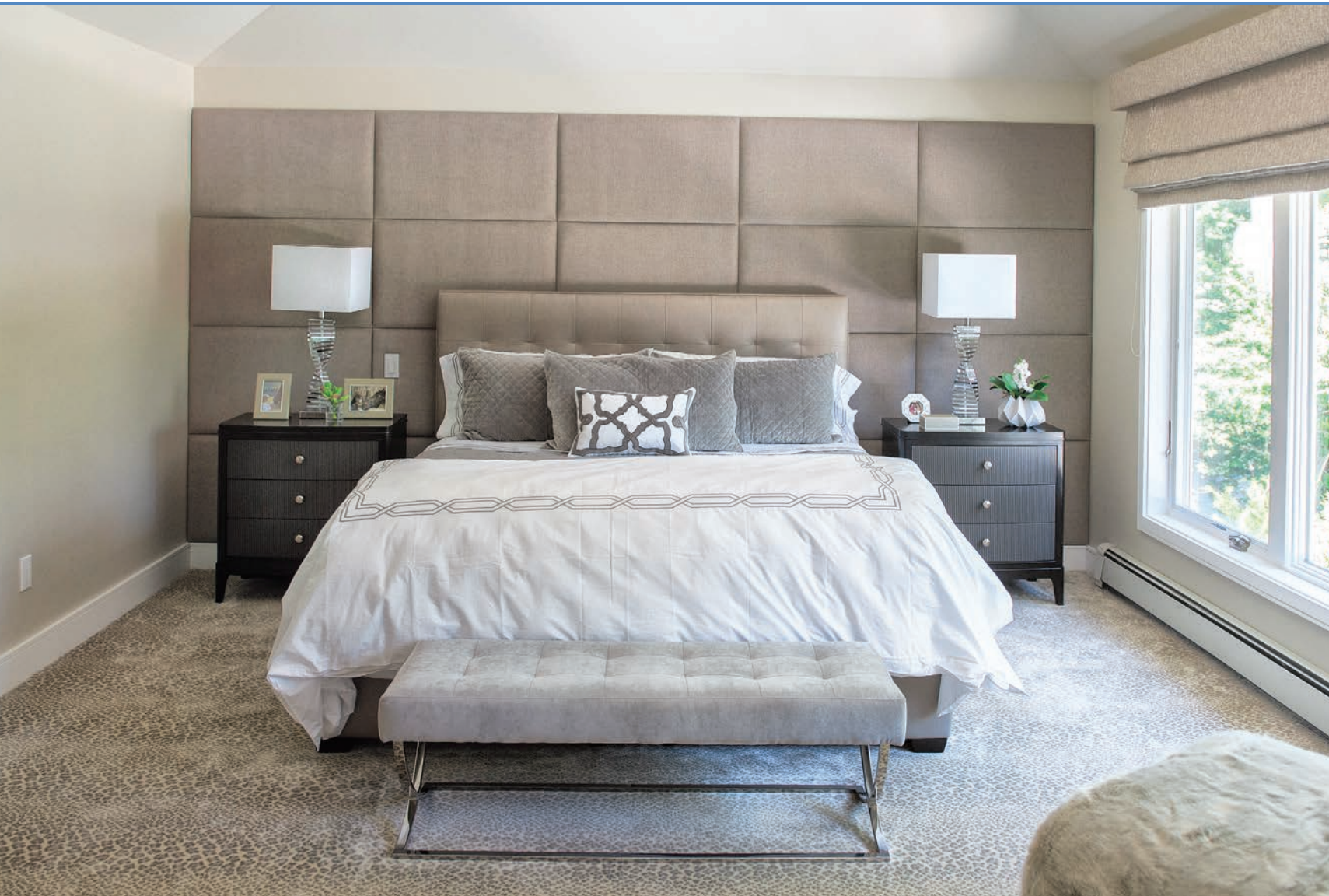
Claire Paquin Clean Design Partners

LOCATION: SCARSDALE

This formal living space is not used on a daily basis, but it needed to accommodate ample seating for when the homeowners entertain. It is also one of the first rooms guests see when entering the home, so it needed to make a great first impression. Because the space is long, designer Claire Paquin created two seating areas and connected them with a large Tencel rug. The sofa and rug have a warm, neutral palette, so Paquin added pops of color through accessories and other pieces. She brought in berry purple and golden yellow, to make the space vibrant and sophisticated.

Photography by: Regan Wood





Lara Michelle Lara Michelle Interiors

LOCATION: ARMONK

The clients wanted a luxurious and modern room to relax in, so a master suite was created by combining three rooms and a hall bath. It was decorated in neutral tones with a custom-fabric panel wall behind the bed. Designer Lara Michelle found the neutral-colored leopard-patterned rug, and “everything grew from there.” Plush textures and patterned fabrics add interest and create a cozy look and feel. The sitting area includes a TV hidden behind a custom-built half-wall featuring accent shelving — the perfect space for unwinding after a long day.

Photography by: Chuan Ding



MASTER SUITE

Keller/Eaton Architects

LOCATION: LARCHMONT

This 1880s Victorian has views of the Larchmont Harbor and Long Island Sound from the attic level. As is common with sea captains' homes of that time, there was unused third-floor space. The first step in Keller/Eaton's design was to make this area into a master suite, including a bedroom, balcony, his-and-hers offices, an expansive dressing room, and a master bath. The large master bath uses recycled materials, and the tiled bathroom floor extends into a large, doorless shower alcove. Beyond the master bath is the wife's closet, complete with center island, four walls of shelves, cabinets, mirrors, and built-in window seating. Bobby Noonan of Noonan Construction designed and fabricated the custom cabinets.

Photography by: Gross and Daley Photography



MASTER SUITE



Claire Paquin Clean Design Partners

LOCATION: BRONXVILLE

This master suite includes a large bedroom, a walk-in closet, as well as two additional closets, and a master bath. The space was gut-renovated to create a better layout and flow. The homeowner favors a more traditional aesthetic, so designer Claire Paquin chose a warm color palette. She created a “soothing oasis” by using a pale-colored area rug, window treatments, and paint, so the elements blend together. Touches of rich lavender were also added. In the bathroom, a clear-coated walnut vanity brings warmth and sophistication to the space. A warm, white marble called White Haze and glittering accents in polished nickel complete the space.

Photography by: Regan Wood



MODERN BATHROOM



Carol Kurth FAIA, ASID
Carol Kurth Architecture and Carol Kurth Interiors

LOCATION: CHAPPAQUA

The inspiration for this bathroom was the “hotel at home” lifestyle. The space was gut-renovated and reconfigured. It now has a large picture window and a skylight that bathe the space in sunlight. The designer chose a soothing palette and layered textures, including smooth lacquer and glass. A freestanding tub, atrium-inspired shower, and double sinks lit with modern pendant lighting complete the bathroom.

Photography by: Peter Krupenye





Nancy Mayerfield NM Design House

LOCATION: SCARSDALE

This bathroom is used both as a hall bathroom and a children's bathroom shared by a boy and a girl. Designer Nancy Mayerfield chose a neutral palette, along with clean and modern finishes. The colorful towel hooks and stool lend whimsy to the space. The quartz flooring in the room is both unique and transcendent. "My goal was to design a utilitarian space that was elegant and functional," says Mayerfield.

Photography by: Paul Johnson

MODERN BATHROOM

Sharon Rembaum Sharon Rembaum Interiors

LOCATION: SCARSDALE

Clean lines and light materials give this master bath a fresh and luxurious feel. The designer and homeowner, Sharon Rembaum, started with the tile, which is all dolomite. The floating double vanity was custom-made and is topped with white glass, in keeping with the clean, modern, spa-like aesthetic. Rembaum painted the window trim a dark gray, to make it really stand out and draw the eye out to nature. But her favorite elements in the space are the Murano glass sconce and Murano glass chandelier, which she found in Los Angeles.

Photography by: Paul Johnson





Bart Hamlin and Deborah Goldreyer Hamlin Goldreyer Architects

LOCATION: SCARSDALE

This sleek kitchen was a playroom before it was gutted and reorganized. The European homeowners wanted a modern kitchen and access to the deck and yard from the space. "The concept [was] for three walls to be the background and the island to be the focal point," says architect Bart Hamlin. The island, along with the breakfast table, are both darker, to contrast the white cabinets and backsplash at the three walls. "[But] our favorite element is the folding doors and screens at the corner breakfast area." With the doors closed, the kitchen still gets great light. If it's a nice day, the doors can be fully opened, making this an open room; if it's buggy, there are remote-control screens that convert the space into a screened-in porch. The general contractor was Bashford Construction Co. Inc.

Photography by: Costa Picadas



MODERN KITCHEN

Rajni Alex

Rajni Alex Design

LOCATION: BRONXVILLE

The homeowners were downsizing from a 5,000 sq ft home to this 2,800 sq ft townhouse, but they still wanted ample storage and utility in their kitchen. The old kitchen was small, but designer Rajni Alex opened the space into the dining room, giving the couple more storage and room. A mirror was added above the eat-in area, to create an illusion of a larger space. Pendants were avoided to keep a clean sightline, and a glass table with a Lucite base was used to keep the space open and airy.

Photography by: Jane Beiles





Sarah Robertson Studio Dearborn

LOCATION: MAMARONECK

A gut-renovation took place in this home, and as part of that project, the rear of the house was enlarged and a new kitchen was built. The overarching theme for this design was peace and serenity. An enormous picture window leads the eye directly outdoors, and the kitchen opens completely with a folding glass door onto the spacious three-season porch. Charcoal oak cabinetry got sleek, back-painted glass doors, creating tension between rough and polished. The homeowner is an avid cook, and she wanted an open cooktop, where she could work while chatting with family and friends.

Photography by: Neil Landino



POOL OR POOL HOUSE



Sean Jancski SJ Landscape Architects

LOCATION: MAMARONECK

The homeowners of this coastal Long Island Sound property are world travelers who wanted an “outdoor oasis” at home. They were inspired by sandstone resorts they’d visited in the Far East, so imported cream sandstone was used as a unifying base throughout the design. Landscape architect Sean Jancski and his team set out to renovate the garden and construct a pool area and cabana. These elements were all designed to be harmonious with the architectural style of the main house, giving the impression that they were all built simultaneously. An infinity pool with a dark, reflective surface blends with the Long Island Sound and beyond, maximizing water views.

Photography by: Sean Jancski

Sean Jancski SJ Landscape Architects

LOCATION: PURCHASE

Fifteen years after purchasing this house, the homeowners enlisted landscape architect Sean Jancski to redesign the pool, add a spa, create an outdoor living room with fire table, design a viewing garden from the eat-in kitchen area, and extend the lawn. The owners have a large family and love to entertain, so it was important that the outdoor living areas accommodate intimate and large parties. The infinity-edge spa is elevated on all sides and is the signature feature of the design.

Photography by: Sean Jancski



Sean Jancski SJ Landscape Architects

LOCATION: RYE

For this new-construction home, landscape architect Sean Jancski was tasked with creating a pool, spa, seating areas, and dog run in an area with extensive wetlands. The homeowners also wanted to extend the house’s living room to the outside. Jancski used the topography to their advantage. An infinity pool created the opportunity for terraces where lounging and entertaining can take place. The upper-pool terrace and spa can be used all year, while the lower-pool terrace can be accessed directly from the spa terrace and has a separate lounging area adjacent to the pool.

Photography by: Sean Jancski

Claire Paquin Clean Design Partners

LOCATION: SCARSDALE

Although this is a small space, the homeowner wanted it to make a big impact on guests. “We chose a unique, elongated-chevron marble mosaic tile for the floor and a simple, classic vanity on polished-nickel legs that allows you to focus on the tile,” says designer Claire Paquin. She used a metallic grasscloth wallpaper and Calacatta Gold marble countertop, adding a touch of glamour and sophistication. Both make the powder room sparkle.

Photography by: Regan Wood



Nancy Mayerfield NM Design House

LOCATION: SCARSDALE

This contemporary powder room was added to the main entryway of this Colonial home. The design has light and dark elements for great contrast. Streamlined and functional, the room cleverly hides a storage room. “My favorite element is the mirror, which exemplifies the overall look of the powder room’s dramatic balance of light and dark and the use of natural materials,” says designer Nancy Mayerfield.

Photography by: Paul Johnson



Claire Paquin Clean Design Partners

LOCATION: PELHAM

This powder room was part of an entire first-floor redesign undertaken to make this home more modern. Originally, the clients just wanted to “freshen up” the space with new wallpaper, but as the project progressed, they ended up renovating the entire bathroom. Because it is a small space, designer Claire Paquin felt wallpaper would make it feel larger. “We selected a stunning gray-and-white beaded-peacock-feather wallpaper,” says Paquin. “Paired with a metal-star light fixture, a large mirror, and sleek vanity, [it makes] this powder room a modern jewel box.”

Photography by: Regan Wood

SPECIALTY ROOM



Daniel Contelmo Daniel Contelmo Architects

LOCATION: PLEASANT VALLEY

This 100-year-old barn and carport structure needed major repairs, but the homeowners requested additions that would double the size of the original building. The first level now has room for four cars and a gymnasium, while the second floor was allocated as a sleeping wing and entertainment space, including a bar, kitchen, billiard room, and home theater. Using authentic barn materials, the result is functional, rustic, and worthy of a couple who love to entertain.

Photography by: Daniel Contelmo Jr.

SPECIALTY ROOM



Claire Paquin Clean Design Partners

LOCATION: EASTCHESTER

This lower level was dark and dreary when designer Claire Paquin was called in to overhaul it. She reconfigured the entire 3,500 sq ft space, creating zones in which the family could easily entertain. Now there is a sophisticated media room for viewing movies and football games, a glass-walled gym for exercise, a space for gaming, and a sophisticated bar with a waterfall Marmara marble counter for kicking back with a drink.

Photography by: Regan Wood



Daniel Contelmo Daniel Contelmo Architects

LOCATION: UNIONVALE

Designed to look like a 150-year-old barn, this newly built carriage house has plenty of room for the homeowner's collection of antique cars, an attached bar, an entertainment area, and a catwalk for viewing the cars from above. Getting the right size, look, and feel of the building required a lot of research into barns of the 1800s. The stone walls were inspired by historic buildings on the Franklin D. Roosevelt Estate in Hyde Park. Three varieties of stone were used to create each wall.

Photography by: Chris Kendall



TRADITIONAL BATH

Daniel Contelmo Daniel Contelmo Architects

LOCATION: CHAPPAQUA

This grand bathroom is both traditional and modern. The custom vanity features graceful legs and ample storage. The floor is a custom chevron pattern featuring iceberg and Thassos marble, and custom-designed tile graces the walls throughout. The modern light fixture and antiqued mirrors balance each other. A tray ceiling formalizes the center of the room, while the stand-alone tub sits in a light-filled dormer. Interior design is by Tina Harvey, Allied ASID of True Identity Concepts; architecture is by Bello Architecture; renovation specialist was Old World Craftsman.



Photography by: Daniel Contelmo Jr.



Christina Griffin Christina Griffin Architect

LOCATION: DOBBS FERRY

This project included a complete gut-renovation with an extension. This new master bathroom is in the addition. This is the owner's dream home, so the design was replete in the details. Using all things Italian as inspiration, architect Christina Griffin incorporated beautiful tile work, a custom vanity, and the view of the Hudson River.

Photography by: Josefa Mulaire and Suzanne Levine



Melissa Adams Adams Interior Design
and **Daniel Contelmo** Daniel Contelmo
Architects

LOCATION: POUGHKEEPSIE

The layout was rearranged in this preexisting bathroom. A vestibule between the master closet and master bath was added to the bathroom space to make room for a double vanity, a larger shower, and a built-in makeup area. A 10-foot vaulted ceiling makes the small space feel much larger. The light color palette lends a bright and airy feel. Carrera marble was used throughout, and a custom vanity and new fixtures were added.

Photography by: Daniel Contelmo Jr.



TRADITIONAL KITCHEN



Carol Kurth FAIA, ASID
Carol Kurth Architecture and Carol Kurth Interiors

LOCATION: KATONAH

This chef's kitchen was created to accommodate specialized food preparation, to have plenty of storage for food and wine, and to be open and inviting. Small European farm stands inspired the design. A rustic sensibility was achieved by using reclaimed-timber ceiling beams and reclaimed antique-pine flooring. The U-shaped island serves as a wine-tasting area and is detailed with hand-hewn wood-and-steel countertops. Crafted kitchen cabinets were painted by hand with organic pigments and paints.

Photography by: Peter Krupenye

Max Parangi
Max Parangi Architects

LOCATION: LARCHMONT

At the same time the homeowner started remodeling this kitchen, she also got a Great Dane puppy, which has now grown into a large dog. "She [had] it in her head that she wanted to match the color of her countertops to the black and white spots of her Great Dane, and I have to say they did a great job," says architect Max Parangi. This traditional kitchen with modern touches (including the black-and-white countertops) has not one but two large islands and opens to an eat-in area and the family room. The general contractor was Luongo Enterprises Inc., and the artistic consultant was Exler Studios. Cabinets by CliqStudios.

Photography by: Karen Melvin



TRADITIONAL KITCHEN



Dipti Shah and Paul Benowitz
Benowitz and Shah Architects; Randy O’Kane, Bilotta
LOCATION: SCARSDALE

The entire design for this project was created around the “must-have” Lacanche range in stunning French blue with brass trim. The designer and the architects wanted to modernize the kitchen while staying true to the iconic original house, which was designed in 1928 by regionally noted architect Franklin P. Hammond. The new plan moved the kitchen from a dark corner in the front of the house to the center and gives the kitchen and family room a visual connection and better flow. There are two islands, which allow this busy family ample space. The island closer to the range has seating and makes a perfect place for doing homework or crafts or having breakfast or snacks. The second island has ample storage and acts as a staging area from the kitchen to the dinner table. The cabinetry is Bilotta’s private label. The contractor was David Anspach.

Photography by: Peter Krupenye



Keller/Eaton Architects

LOCATION: RYE

This waterfront home, which was redesigned for two empty nesters, is situated on 2 acres right on Long Island Sound. Because of the spectacular view outside, the architects at Keller/Eaton wanted to provide water views in all of the living spaces. They created “courtyards” to maximize the light and vistas. The floating staircase connects the home’s three levels and is flanked by a wall of windows, which floods the center of the home with daylight. The spacious living room/dining area opens to the rear garden and a stunning view of the Sound. A first-floor master bedroom and three additional bedrooms upstairs, all with water views, complete the home. Contractors: Murphy Brothers Contracting.

Photography by: Dan Milstein and Peter Krupenye



WHOLE HOME ARCHITECTURE





Daniel Contelmo Daniel
Contelmo Architecture

LOCATION: CHAPPAQUA

The surrounding landscape served as the inspiration for this home's architecture. The house was built to maximize views, natural light, and use. The front elevation has many traditional cottage elements, combining steep rooflines with graceful curves, while the rear of the house is almost entirely glass, allowing for a full view of the pond on the property. The metal roof reflects the sky and softens the presence of the house. This project consisted of the addition and gut-renovation of many rooms. The finished look is unique yet timeless.

Photography by: Daniel Contelmo Jr.





Robert Georgio Georgio Home

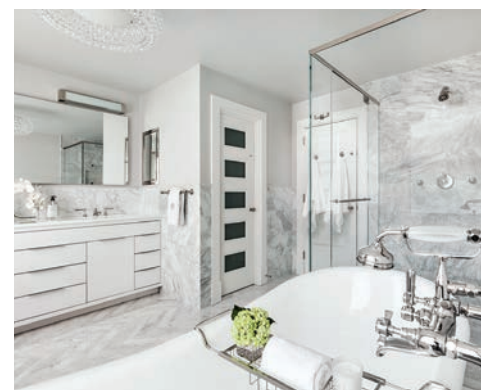
LOCATION: RYE

This new-construction house was inspired by the Hamptons and built for a young family who wanted to live in this water community. Like many of the Georgio Home designs, this house is traditional on the exterior, with modern touches in the interior. Robert Georgio's favorite elements are the rooflines coupled with the window details and the Mont Blanc kitchen countertop, which is a granite that looks like marble. Interior design is by Patricia Georgio Designs.

Photography by: Tim Lee



WHOLE HOME DESIGN



Claire Paquin Clean Design Partners

LOCATION: SCARSDALE

This 1910 Edwardian Colonial was gut-renovated, and additions were made to allow the family the conveniences of modern-day living, including a large mudroom, walk-in pantry, and open-concept kitchen and family room, all while maintaining the charm of the house. The previous first floor was choppy and not conducive to entertaining. The kitchen is now centrally located and acts as the hub of the home. The basement was also gutted and reconfigured, giving the homeowners a new full bathroom, a large home gym, laundry room, lounge area, and art space for the children. On the second floor, the master bedroom was enlarged; another bedroom was reconfigured; and the children's bathroom was updated.

Photography by: Regan Wood



Claire Paquin Clean Design Partners

LOCATION: PELHAM

This client wanted to freshen the interiors of this Victorian home built in 1900 by adding color and personality to each space while keeping it functional and livable. The large, open space running across the front of the house includes the dining room, living room, and foyer, which are all visually connected. The overall palette for this area is teal and purple. In the family room, which is the main hangout for the family, designer Claire Paquin chose durable fabrics in neutral colors and added pops of pink, red, and orange. The kitchen also got a complete refresh. The cabinets were refinished; the island was reconfigured; and the designer added new countertops, backsplash, and lights.

Photography by: Regan Wood

WHOLE HOME DESIGN



Daniel Contelmo Daniel Contelmo Architecture

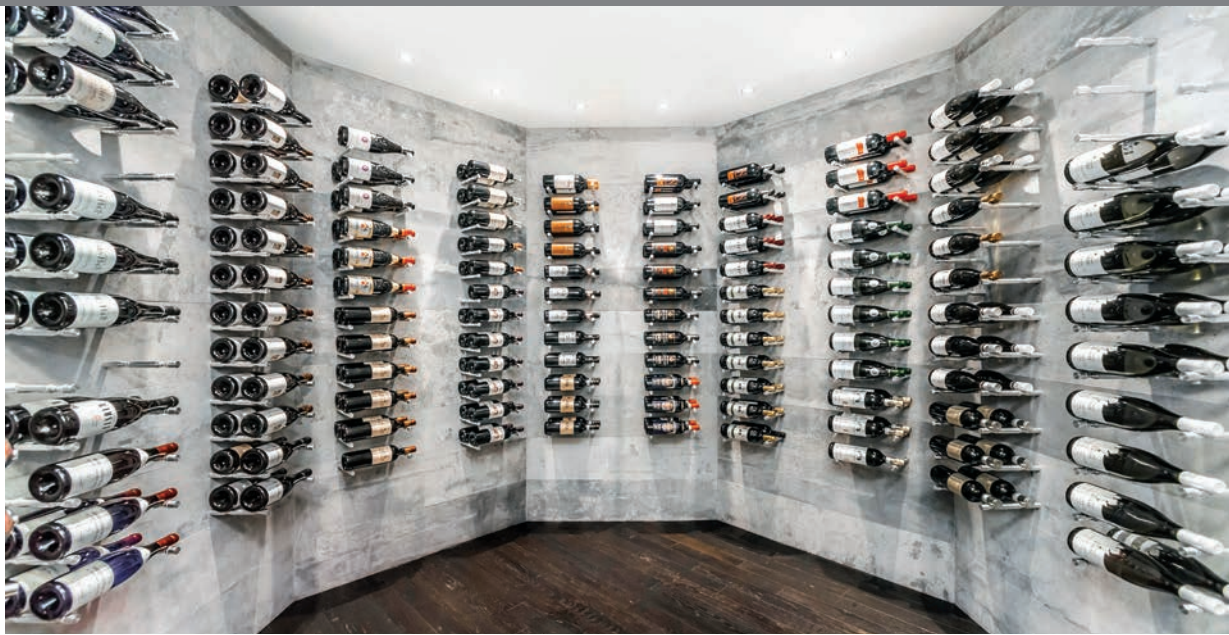
LOCATION: CHAPPAQUA

This project consisted of the addition and gut-renovation of many rooms. The kitchen, mudroom, and master bath were all enlarged, while the breakfast room and family room required additions. Custom cabinets were used throughout; the existing fireplace mantel now shares a mantel surround with the television; and tray ceilings were added to the breakfast room and kitchen.

Photography by: Daniel Contelmo Jr.



WINE ROOM OR CELLAR



Sylvain Côté
Absolute Green Homes

LOCATION: SCARSDALE

The homeowners told Sylvain Côté that they wanted a contemporary wine cellar. Inspired by the octagon shape of the existing concrete foundation walls, Côté created a brand-new wine cellar where there was just storage before. It holds 240 bottles on stainless-steel racks by Vin de Garde but can informally hold up to two dozen cases, bringing storage to nearly 500 bottles.

Photography by: Sylvain Côté



Daniel Contelmo Daniel Contelmo Architects

LOCATION: CHAPPAQUA

This space came with several challenges, as it was part of a larger basement remodel. A new turret in the front of the house was constructed with a curved staircase leading down to the wine room corridor. Once in the corridor, guests travel down three existing risers to what is now a wine-tasting room. Each shelf is an oak board with wedge-shaped spacers for wine bottles to rest on. The wine area is lined with stone or stucco and has antique brick floors. All cabinets and shelves are made from quarter-sawn white oak, and 2¼-inch-thick oak doors hang by large iron strap hinges. The wine-tasting room and cellar are separate from each other, so the homeowners can entertain family and friends outside of the chilled area. Murphy Brothers was the contractor.

Photography by: Chris Kendall; Contractors: Murphy Brothers



FRANCINE GARDNER



DENISE DAVIES



MARGARET MINTZ



GEORGE SNEAD



LINDSEY CORAL HARPER

OUR JUDGES

Please visit www.westchestermagazine.com/designawards2017 for more online-only categories, our Reader's Choice categories, and to learn more about the Design Award nominating process.

Light and Bright

Welcome spring with colorful hues and bold accessories.

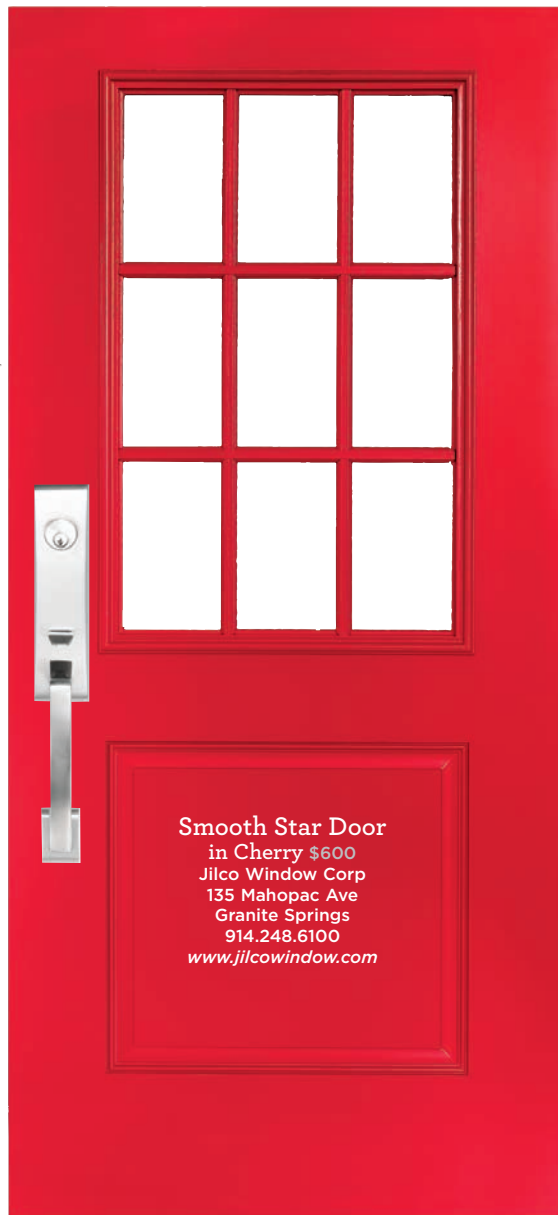
Maisonette Pillow, \$65
Maisonette
578 Warburton Ave
Hastings-on-Hudson
914.231.7454
www.maisonetteshoppe.com



Apollo Tubelatch Lockset
With Providence Knob, \$299
www.rejuvenation.com



Carmel Planter, \$44
www.birchlane.com



Smooth Star Door
in Cherry \$600
Jilco Window Corp
135 Mahopac Ave
Granite Springs
914.248.6100
www.jilcowindow.com



Dartmouth Door Mat
in Orange, \$49-\$79
www.grandinroad.com

Rustic
Nautical
Outdoor
Wall
Light
in Brushed
Nickel, \$215
www.shadesoflight.com



Capri Outdoor Chair
Starting at \$993 With Cushion
Nest Inspired Home
20 Purchase St
Rye
914.921.6378
www.nestinspiredhome.com



Rope Knot
Doorstop, \$40
www.uncommongoods.com

WESTCHESTER MAGAZINE'S

WINE & FOOD FESTIVAL

JUNE 6-11, 2017

The Ultimate Experience for Food and Wine Lovers is Back for a Seventh Year!

Tue
6
JUN

Salute! A Wine Tasting Tour of Italy

Italian
Cultural Center
Tuckahoe
6:00PM - 9:00PM



Fri
9
JUN

An Evening with Westchester's Tastemakers

The Ritz-Carlton
White Plains
6:00PM - 10:00PM



Wed
7
JUN

Taste & Style at Savor Westchester

The Westchester
White Plains
6:00PM - 9:00PM



Sat
10
JUN

Grand Tasting Village

Kensico Dam Plaza
Valhalla
12:00PM - 5:00PM



Thu
8
JUN

Burger & Beer Bash

Kensico Dam Plaza
Valhalla
6:00PM - 10:00PM



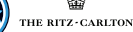
Sun
11
JUN

Jr. Chef Experience

The Westchester
White Plains
10:00AM - 12:00PM



PRESENTING SPONSORS



DIAMOND SPONSORS



OFFICIAL GROUND BEEF SPONSOR



BENEFITTING CHARITY



For tickets and more information visit westchestermagazine.com/winefood
For sponsorship opportunities call 914.345.0601 x 138 or email sales@westchestermagazine.com.

Houses That Wow

These outstanding houses will turn even the wealthiest homeowners green with envy.

If money were no object, what would be on your real estate wish list? These sky's-the-limit listings represent some of the most luxurious estates in Westchester, with features that would make Robin Leach jealous. Whether your ideal castle involves the biggest property around, a sports-lover's mecca, design by bold-faced names, or a private peninsula with the ultimate in water views, these houses remind us to dream big.



Green Grandeur

Location 160 Chestnut Ridge Road, Bedford Corners

List Price \$8,950,000

Square Footage 13,244

Blending classic shingle-style architecture with the amenities of a brand-new luxury home, this country estate built in 2016 brings together the best of old and new. The house — with chef's kitchen, expansive master suite with spa bathroom, and great room with 20-foot-high stone fireplace — has green, energy-efficient mechanical systems working behind the scenes, including a geothermal heating and cooling system (with radiant heated floors) and smart-house technology throughout. Comprising 27 acres, the peaceful, wooded grounds can be enjoyed from the shelter of a 2,500 sq ft stone veranda with outdoor fireplace.

Listed With Nancy Strong, Douglas Elliman; 914.671.5784



Town & Country

120 Polly Park Road, Rye

\$9,250,000

9,345

Though it's not far from downtown Rye, this grand estate near Westchester Country Club feels a world away, on five private wooded acres with impeccably landscaped grounds that include gazebos, sculptures, and a waterfall fountain. For recreation, there are indoor and outdoor pools and a tennis court. Inside the Mediterranean-style mansion, a sweeping double staircase with iron railings channels *Gone With the Wind*, and there are well-appointed living and entertaining spaces throughout, including a large basement game room and movie-screening lounge.

Louis Katsoris, Julia B. Fee Sotheby's; 914.921.9250



Golden Age

Irvington

\$8,995,000

17,522

Not only is Longmeadow estate the largest property available in the Rivertowns, its grounds overlooking the Hudson River are steeped in history. The elegant Georgian manor with gated entrance is one of the original homes in Matthiessen Park, the area once known as Tiffany Park and home to the estate of Charles Lewis Tiffany, founder of Tiffany & Co. Notable features in the 8-bedroom, 12-bath home — which was refreshed by AD100 interior designer Thomas Britt — include a solarium, indoor pool, two-story paneled library, 2,500 sq ft master wing, and an 80-foot terrace overlooking the river.

Ellen Schwartz, Douglas Elliman; 914.420.4615

Bursting With Color

Four local designers, and our editor, share their favorite colors for this season and beyond.

Benjamin Moore's Gray Owl and Revere Pewter are my two favorite colors. They have been my go-to wall colors for a while. They are just what I look for in a paint color: neutral yet can help unify a space. They both play well with others while allowing the other colors to stand out, and they are serene. (It's nice to have a color help to create a calming place to come home to.) They work equally well in a modern, clean-lined space or a more traditional space, enveloping you in just the right amount of color — or lack of it.

— Lisa McTernan of *Lifestyles & Interiors by Lisa, Croton-on-Hudson*

Among the trending colors for 2017 is Benjamin Moore's Wish. This is my new favorite. It's a great beige that is a true neutral, with just the right amounts of gray and yellow. It's a completely versatile and sophisticated color that can work with any type of design: contemporary, traditional, urban loft, or country chic.

— Barbara Bell of *Barbara Bell Interiors, Tarrytown*

What is your favorite paint color right now?

With exuberant fabric patterns and bolder colors trending this season, my go-to neutral paint color is Benjamin Moore's London Fog. It's the right mix of quiet elegance that rests in the background — perfect for layering expressive details in any room!

— Denise Wenacur of *DW Design & Decor, Croton-on-Hudson*

I am far from a designer, but my go-to color for every room and even trim is Benjamin Moore's White Dove. I had my living room painted another color, and a designer friend suggested I repaint it White Dove. I was skeptical, but I know not all whites are created equal, so I broke down and had it done. I could not be more happy with the transformation, and now I use it whenever I need a go-to white.

— Jenn Andrik, executive editor of *Westchester Home, Rye*

I love purple and searched a lot for the perfect soft shade that is sophisticated yet fresh. Don't be deceived by the subtlety [of Sherwin-Williams Silver Peony]. The color comes through richly on the wall and is especially beautiful in a bedroom, bath, or sitting room. I like very soft greens, and despite the name, Benjamin Moore's Gray Wisp is a green. The gray base tones it down and makes it super-easy to live with. It reminds me of the lamb's ear plant in my garden: exquisitely soft and elegant. I would like this in any room with lots of windows or paired with a crisp white trim in a darker space.

— Jane Bell of *Jane Bell Interior Design, Scarsdale*





TOPS ON TOP

Cindy Crawford on Silestone Countertop



On Top

Color
Eternal Marquina

Discover more on topsontop.com | Follow Us  

A product designed by Cosentino®

BILOTTA

KITCHEN & HOME