



## **YOUR** LEGACY CAN HELP SAVE SPECIES AT RISK

For many of us, creating or updating our will is one of those tasks that always seems to fall to the bottom of the pile. In fact, the average person takes more time to plan their vacations than to plan for their future. You owe it to yourself and your family to be prepared. When you leave a gift to the National Geographic Society in your will or trust, or by beneficiary designation, you can protect critical animal species for generations to come.

Call us at (800) 226-4438 or email us at [legacy@ngs.org](mailto:legacy@ngs.org) today to receive a free informational brochure on how you can include the National Geographic Society in your estate plans.



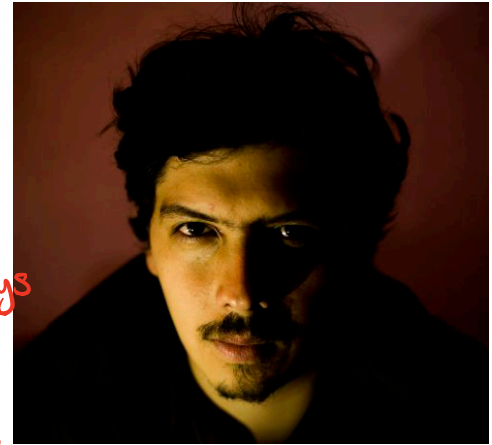


# Explorer Spotlight

## MUSUK NOLTE

Grantee—2019 to Present

Musuk Nolte is a Mexican-born Peruvian photographer who works mainly in the Andean and Amazonian regions of Peru and South America. His work takes a documentary approach to cultural and social issues in dialogue with other sources of understanding the human condition and different <sup>ways</sup> ~~cosmovisions~~ <sup>worldviews</sup>.



As COVID-19 began to spread ~~through communities around~~ <sup>across</sup> the globe, the National Geographic Society launched an emergency fund for journalists covering COVID-19 within their own communities. Nolte was selected as a fund recipient. <sup>He reported on</sup> ~~His reporting covered~~ access to water and issues with sanitation in Lima, Peru. He published articles (in a large national <sup>news</sup> ~~paper~~ and *National Geographic Latam*) about poor communities on the outskirts of Lima <sup>who</sup> ~~that~~ were not receiving water deliveries, <sup>rendering them</sup> ~~and so were~~ <sup>problem</sup> ~~unable to follow hygiene guidelines~~. After reading about this, a company <sup>affected</sup> ~~after reading about this~~ <sup>also</sup> changed their policies and started to deliver water there again. The communities received donations of food and Personal Protection Equipment.

For more information on National Geographic Explorers <sup>and</sup> ~~the~~ Emergency Journalism Fund and how you can support their work, visit [nationalgeographic.org/explorers/](https://nationalgeographic.org/explorers/) and [nationalgeographic.org/funding-opportunities/grants/what-we-fund/covid-19-emergency-fund/](https://nationalgeographic.org/funding-opportunities/grants/what-we-fund/covid-19-emergency-fund/).



## We're Here to Help

We're happy to answer any questions you may have about leaving a gift in your will or trust, or other estate planning documents. For more information on how to create your legacy with the Society or to inform us of a gift you have already left for us, please contact us. We're here to help you create your legacy.

National Geographic Society  
Telephone: (800) 226-4438  
Email: [legacy@ngs.org](mailto:legacy@ngs.org)

Our 501(c)(3) federal tax identification number is **53-0193519**.

*This publication is intended to provide general gift, estate, and financial planning information and is not a comprehensive review of the topics. Please consult your legal and financial advisers when planning your gift.*

# EXPLORE TOMORROW

| SUMMER 2020

PROGRAM AND ESTATE PLANNING INFORMATION FOR FRIENDS OF THE NATIONAL GEOGRAPHIC SOCIETY

## DONOR SPOTLIGHT

### Kate Cunningham: My Backyard is the Planet

I have worked for and supported a lot of good organizations in my life and, to me, National Geographic is truly unique. Their global focus appeals to me because I've always believed that the entire planet is my backyard and we are all connected to one another.

The Society supports researchers tackling the planet's toughest issues and they share their stories with tremendous beauty and caring. National Geographic's work is truly universal, and I love knowing that I'm a tiny part of it. They recognize the connectivity between environmental issues, humanity, our cultural history, our natural history, and our future. There is no other organization quite like them.

When I was young, I did not fully understand the impact we humans have on our planet. Today's young people are so much more sophisticated, knowledgeable, and connected to the world than I was at their age. I'm impressed by these teen activists who already understand their connection to all other life on the planet. And, I'm really



proud to invest in the disciplined and committed young Explorers that National Geographic sponsors.

Young people give me hope for the future. There are four young children in my neighborhood here in Kentucky and I've given them subscriptions to *National Geographic Kids*. It's one more small way to invest in a better future.

As life happens, I've been fortunate and am able to support causes more generously than I expected. I decided to support the National Geographic Society by creating a charitable gift annuity. It was very easy to set up and I receive quarterly income payments that will continue for the rest of my life. It's a simple way people can make a big difference.

My deepest hope is that we come to understand that we're all on this one planet together — that pale blue dot. Perhaps that's what the COVID-19 pandemic is teaching us — that we're all part of the same ecosystem and we're the only ones who can make things better.

HEADER PHOTOGRAPH BY KOSTADIN LUCHANSKY  
DONOR PHOTOGRAPH COURTESY OF KATE CUNNINGHAM



## Feature Story

# National Geographic Society Launches Global Emergency Fund for Journalists

For more than 130 years, the National Geographic Society has funded storytellers who help explain the world and all that's in it as well as shine a light on our shared human experiences.

As travel restrictions force the global population to remain stationary, many of the world's best journalists, including our Explorers, find themselves grounded. Assignments have been cancelled, travel restricted, and speaking engagements postponed.

However, it's more important than ever that journalists can do what they do best: support and educate their communities through stories, and bring life saving information to people who need it most.

To help journalists around the world, the Society is launching an emergency fund that will distribute support to applicants who wish to safely cover COVID-19 within their own communities.

*about*  
The goal of the fund is for journalists to deliver news of the preparation, response, and impact of this global pandemic through evidence-based reporting. Beyond reporting on ~~medical and physical health related to the outbreak~~, the Society is ~~also~~ *also* encouraging reporting that covers social, emotional, economic, and equity issues. *medical issues related to the virus's spread*

*storytelling*  
"As one of the largest funders to individual journalists in the world, the National Geographic Society is pleased to launch this emergency fund," said Kaitlin Yarnall, senior vice president and chief storytelling officer at the National Geographic Society. "Now more than ever, journalism can support communities around the globe by distributing and providing access to information to those who need it most."

If you are a writer, photographer, videographer, audio journalist, cartographer, filmmaker, or data visualization expert, we encourage you to learn more about this opportunity and consider applying.

*for funding fund*  
The Society is stressing that recipients of this funding prioritize the health of themselves and the communities in which they work. *health of the*

*their*  
If you are interested in helping the Society support more journalists through this fund, please reach out to Rob Flynn at roflynn@ngs.org.



## Wills and Living Trusts

# Do You Want Supplement Payments <sup>1.c.</sup> For Life?



When considering ways to support the National Geographic Society, it is important to remember that some gift options provide features that can benefit you in unique ways. One example is the charitable gift annuity.

A contractual agreement between you and the National Geographic Society, a charitable gift annuity is part gift and part annuity. In exchange for your gift, we agree to pay a specified amount to you and/or another beneficiary (two people maximum) for life. The income amount is based on the annuitant's age, the gift amount, and when payments begin. Part of each gift qualifies for an income tax charitable deduction if you itemize your tax return.

There are many creative ways to use the charitable gift annuity in your personal planning. Here is one example <sup>0</sup> :

Anne (age 75) and her advisor recently reviewed Anne's estate plan and personal philanthropic goals. Anne was pleased to learn she could make a substantial gift to the National Geographic Society in a creative and personally satisfying way. Anne makes a gift of appreciated stock to us valued at \$30,000. Part of the gift amount qualifies for a charitable deduction, and no capital gains tax is due when the gift is made. In exchange for her gift, we will pay Anne \$1,740 each year for the rest of her life. Part of each payment is tax free, part is taxed as capital gain, and part is taxed as income.

Because Anne wants to keep this stock in her portfolio, she uses \$30,000 in cash to purchase new shares of the same stock. Her portfolio keeps the balance she desires, but there is a new, higher basis in the stock—helpful to Anne from a tax standpoint. If the stock appreciates and she later sells the stock, less capital gains tax will be due because the basis in the new stock is higher than the basis in the stock given to us.

A charitable gift annuity is a smart planning option for anyone who wants to make a gift and receive a fixed lifetime income. If you are planning ahead for retirement, deferring the start of payments provides a higher payment rate. Gift annuities can also have two payment beneficiaries—the payment rates are lower, but the fixed lifetime payments continues as long as either beneficiary is alive.

<sup>This example has</sup>

<sup>in which</sup>

<sup>We have</sup> only scratched the surface of the ways a charitable gift annuity might be used in your personal planning. Please fill out the enclosed reply form if you would like a free personalized illustration, and thank you for considering options <sup>for supporting</sup> the work of the National Geographic Society.

<sup>that support</sup>

## CGA RATES

# Immediate Payment Gift Annuity Rates

Rates as of July 1, 2020. National Geographic follows the recommendation of the American Council on Gift Annuities. Rates are subject to change.

Don't see your age? Please contact us to receive a personal CGA illustration with the most current annuity rates. You can donate cash or securities of \$10,000 or more. Payments begin at age 60.

*The National Geographic Society is a 501(c)(3) nonprofit organization. Our federal tax identification number is 53-0193519.*

Age	Payment Rate	Annual payment based on \$10,000 gift
65	4.7%	\$470 per year
70	5.1%	\$510 per year
75	5.8%	\$580 per year
80	6.9%	\$690 per year
85	8.0%	\$800 per year
90	9.0%	\$900 per year

## In the News at National Geographic

### The National Geographic Museum Releases a Virtual Tour of its Current Exhibition "Becoming Jane: The Evolution of Dr. Jane Goodall"

For the first time, the National Geographic Museum has developed a virtual tour of the "Becoming Jane" exhibition and we invite you to explore with us.

As we collectively navigate a world of change and take a moment to reflect on our thoughts, what stands out above all else is the importance of community and connection. We made the difficult decision to temporarily close the National Geographic Museum, which included our current exhibition, "Becoming Jane: The Evolution of Dr. Jane Goodall," produced in partnership with the Jane Goodall Institute. "Becoming Jane" showcases Dr. Goodall's life and legacy and underscores her message of hope, compassion, and altruism. One of Jane's greatest reasons for hope is the indomitable human spirit.

In this spirit, our goal is to continue to share Dr. Goodall's message with our community and with people around the world—at a time when we need it most.

support of people everywhere who are living through these uncertain times, Explore the virtual tour today at [natgeo.org/virtualjane](https://natgeo.org/virtualjane).

