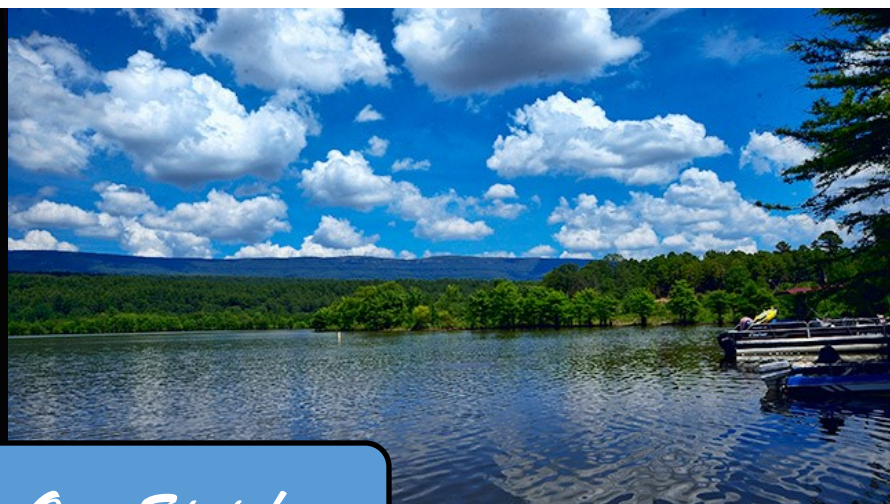
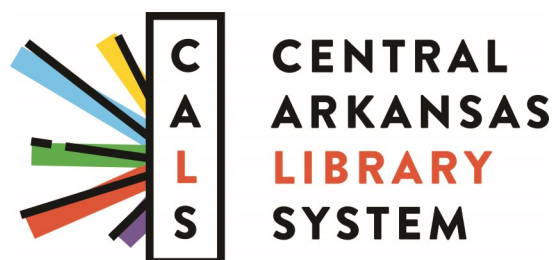


ENCYCLOPEDIA OF ARKANSAS



Welcome to Our State!





ENCYCLOPEDIA OF ARKANSAS

1.5 million visits per year



Visitors from over 200 countries

When anyone needs to know about Arkansas, we are the first point-of-contact. Every year, the EOA welcomes hundreds of thousands of online visitors including native Arkansans, students, business planners, relocators, researchers, policy makers, journalists, and tourists.

6,000 entries by experts

on subjects from Arkansas business to scientific ventures, from our small towns and notable people to land, natural resources, history, Arkansas art, and music



Browse Entries By Category

CATEGORIES

- Arts
- Business and Economics
- Civil Rights and Social Change
- Counties, Cities, and Towns
- Education
- Ethnic Groups
- Exploration and Archaeology
- Folklore and Folklife

TIME PERIOD

- Pre-European Exploration (Prehistory – 1540)
- European Exploration and Settlement (1541 – 1802)
- Louisiana Purchase through Early Statehood (1803 – 1860)
- Civil War through Reconstruction (1861 – 1874)
- Post-Reconstruction through the Gilded Age (1875 – 1900)
- Early Twentieth Century (1901 – 1940)

9,000 media items

including photographs, documents, audio files, and maps



ENCYCLOPEDIA OF ARKANSAS

Paris (Logan County)

County Seat

Latitude and Longitude: 33°17'31"N 093°43'47"W

Elevation: 432 feet

Area: 4,526 square miles (2010 Census)

Population: 3,532 (2010 Census)

Incorporation Date: February 19, 1879

Historical Population as per the U.S. Census:

1810	1820	1830	1840	1850	1860	1870	1880	1890	1900
—	—	—	—	—	—	—	—	547	836
1910	1920	1930	1940	1950	1960	1970	1980	1990	2000
1,407	1,740	3,234	3,430	3,731	3,607	3,646	3,991	3,674	3,707
2010	3,532								

Paris, located in north-central Logan County, is one of the county's two seats. The other county seat, Booneville, is located in the southern part of the county. Built around the courthouse square, Paris is

RELATED MEDIA

- James Bridges
- Eureka Mine
- Short Mountain Road
- Logan County Courthouse in Paris
- Logan County Courthouse
- Logan County Museum

Chambers of commerce around the state have linked their web resources to the EOA entries on their towns.

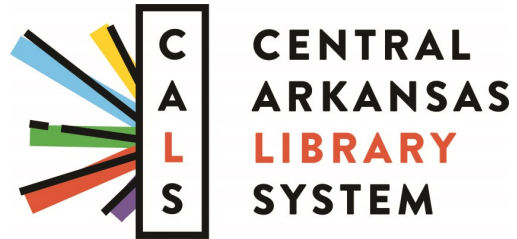
Regional and national news outlets quote the EOA and link to its entries, increasing its audience reach.

4100 EOA visitors per day



“We have entries on the smallest of small towns. We don’t overlook any communities. We want everyone in Arkansas to feel seen and heard.”

Guy Lancaster
Editor
Encyclopedia of Arkansas



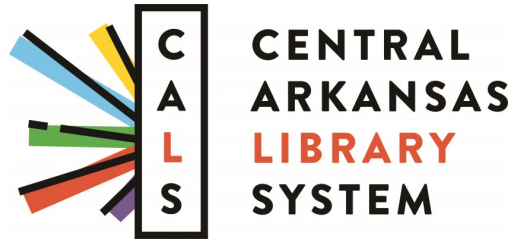
ENCYCLOPEDIA OF ARKANSAS

“Both personally and as an adjunct to professional initiatives at Metroplan, the Encyclopedia of Arkansas is an invaluable research tool compiling so much of our state’s history in one accessible place.

“Additionally, this great history extends into a wealth of wide ranging information on contemporary Arkansas. Either way, historical or contemporary, Arkansas’s story can be found in the Encyclopedia.”

**Tab Townsell
Executive Director
Metroplan**





ENCYCLOPEDIA OF ARKANSAS

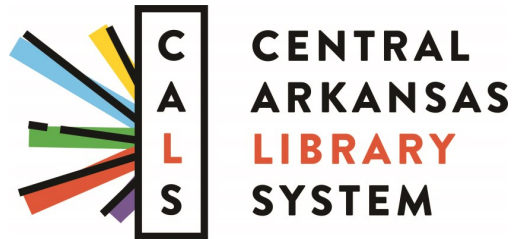
“The Encyclopedia of Arkansas is an edited, credible source for exploring Arkansas history and culture. When I have a historic inquiry, I start my journey at the Encyclopedia of Arkansas.”

French Hill



“Growing up here in an earlier generation, I thought history was what happened elsewhere. But the EOA shows that the state has an intense and deep connection not just with the rest of the USA, but with the rest of the world. A place becomes special when it has a story. Places need to have their stories told.”

**Guy Lancaster
Editor
Encyclopedia of Arkansas**



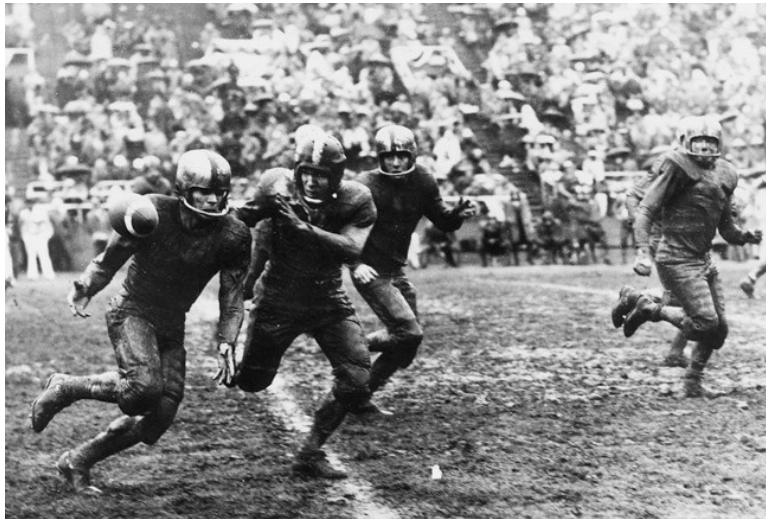
ENCYCLOPEDIA OF ARKANSAS

- **Provides the only comprehensive digital information home base for all aspects of life in Arkansas**
- **Builds positive awareness and pride in cultural identity for Arkansans of all ages**
- **Offers an unmatched, one-of-a-kind resource for students and researchers**
- **Assists business planning as a guide to towns, industries, and natural resources in all parts of the state**
- **Preserves common cultural touchstones such as food, music, community festivals, and state ties to national events**
- **Catalogs for easy reference the wildlife, plants, and trees of our state**
- **Chronicles Arkansas history with detail not found anywhere else online**

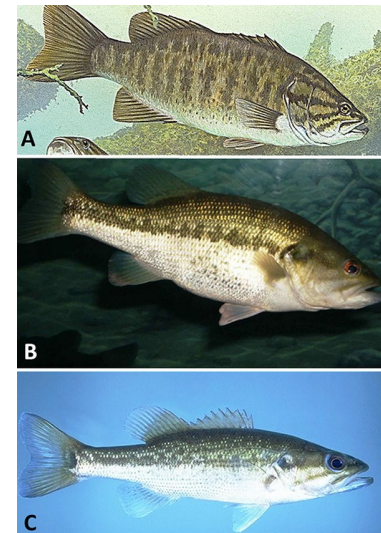


ENCYCLOPEDIA OF ARKANSAS

“The team at CALS that edits the articles and manages the site performs a critical role and service to the public.”



“The *Encyclopedia of Arkansas* is a fantastic resource for both seasoned researchers and those new to the history and contributions of individuals and organizations in our state. ”



“...As a non-native Arkansan, I consider it to be a wonderful jumping-off point as I continue to learn more about our state and its rich history.”

**Lori Birrell, Ed.D., MLIS, MA
Associate Dean for Special Collections
University of Arkansas**



**CENTRAL
ARKANSAS
LIBRARY
SYSTEM**

ENCYCLOPEDIA OF ARKANSAS

Encyclopedia of Arkansas

Launched in 2006

Entries: 6,000

Media: 9,000

New Georgia Encyclopedia

Launched in 2004

Entries: 2,300

Media: 6,600

Tennessee Encyclopedia of History and Culture

Launched in 2002

Entries: Fewer than 2,000

Colorado Encyclopedia

Launched in 2016

Entries: 700

Encyclopedia of Oklahoma History and Culture

Launched in 2007

Entries: 2,400