



Charlotte - North data center

Charlotte, North Carolina

Our Charlotte - North data center complex features N+1 power and cooling redundancy plus superior support from on-site experts. With available inventory and power, Flexential is capable of handling even the largest deployments.

Security and compliance support are part of the package. Among our physical security features are: 4-zone security access, biometric scanners, and monitored security cameras and intercom systems. The site is compliant with several industry and regulatory standards. We are among a select few in the industry who can provide a certified, protected environment to support compliance with PCI DSS.

The best feature of our data center is the people who are on-site 24/7 to protect, monitor and support your infrastructure. Our local engineers and service staff are proven experts in managing and optimizing infrastructure, and we treat your environment as if it was our own. Our IT infrastructure solutions have one thing in common: a deeply ingrained "customer-first" culture. It means no matter what we're providing – from colocation to cloud – we put the customer at the top of our org chart and empower all employees to provide the highest standards of service.



Quick facts

- 62,589-square-foot data center footprint
- 2.19 MW critical load UPS capacity; N+1 UPS redundancy
- N+1 cooling redundancy
- 100% SLA on power
- 4-zone security access



Facility specifications

Power & cooling

- N+1 UPS redundancy
- 2.19 MW critical load UPS capacity
- 150 W/SF power density
- N+1 cooling redundancy
- Hot/cold aisle configuration
- 100% power SLA
- 1.75 PUE rating

24/7 security

- Round-the-clock security and technical staff
- Dual-factor authentication access
- Biometric scanners
- 4-zone security access
- Monitored security cameras and intercom system
- Cage security cameras available

Additional features

- Migration and capacity planning
- Meeting room and dedicated work areas for customer use
- Office lease space available
- Remote Hands support available
- Business continuity and disaster recovery services, solutions and support available
- Public, private, hybrid and compliant cloud solutions, as well as cloud recovery and dedicated servers, available
- Professional services including migration, security and risk management, assessments and audits, and performance and network architecture support available

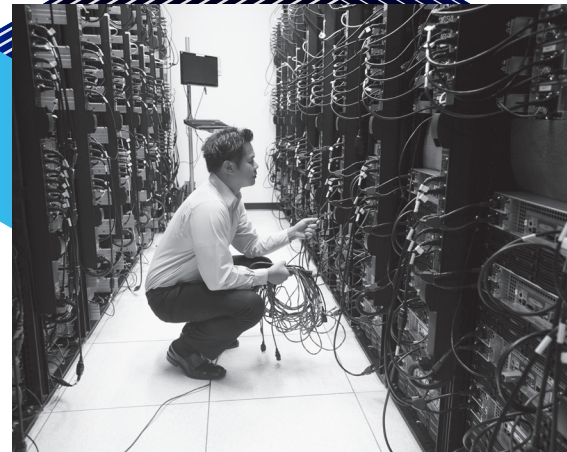


Connectivity

- 3 Tb total network capacity
- Carrier-neutral blended and proactively managed/monitored IP bandwidth
- Redundant, automatically rerouted connections ranging from 10 Mbps to 10 Gbps
- Proactive Layer 3 and Layer 4 DDoS protection

Compliance

- PCI DSS compliant site
- Annual independent audits according to: EU-US Privacy Shield framework; SOC 1 Type II, SOC 2 Type II, SOC 3; HIPAA; ISO 27001; SSAE 18
- HITRUST and PCI certification services available
- Regulatory and standards compliance assessment, analysis, consulting and planning services available



Flexential helps organizations optimize IT transformation while simultaneously balancing cost, scalability, compliance and security. With a focus on building trusted relationships, providing valuable support and delivering tailored solutions and reliable performance, Flexential delivers colocation, connectivity, cloud, managed solutions and professional services to 4,200 customers across the U.S. and Canada.

