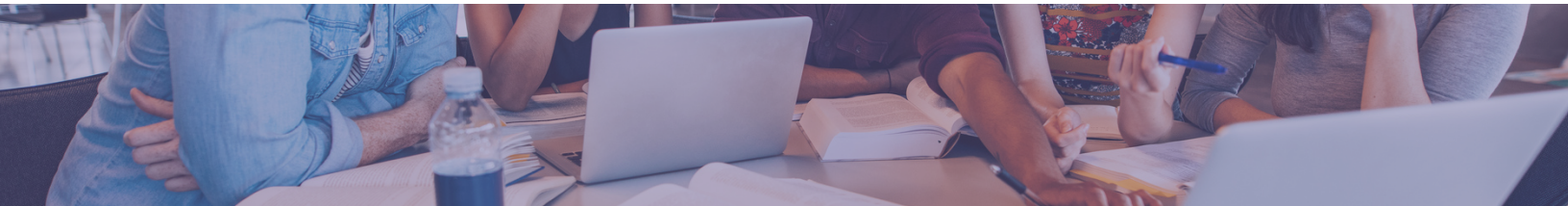


# Abstract Database Collections

Taylor & Francis Journals



## Strengthening your position in the global research community.

**Taylor & Francis Abstract Database Collections** offer scholars an invaluable tool to stay up-to-date on the latest developments in their field. From early career researchers looking to conduct a literature review, to more seasoned academics wishing to stay abreast of new research, abstract databases help quickly connect academics to a breadth of essential content.

These comprehensive databases are comprised of fully indexed abstracts supported by a flexible search engine and comprise links to the full-text online versions of articles where possible.

## The Three Databases

### **Educational Research Abstracts(CERA)**



Discover the Education Research Abstracts Online (CERA), an exciting and comprehensive database comprising over **250,000** fully indexed abstracts that cover the current international research in education.

### **Research into Higher Education Abstracts(CRHE)**



Discover the Research into Higher Education Abstracts (CRHE) published on behalf of the Society for Research into Higher Education. Containing over **15,000** records, it exists to propagate knowledge about and encourage discussion of, significant research into higher education.

### **Studies on Women and Gender Abstracts (CWSA)**



Explore the Studies on Women and Gender Abstracts (CWSA), an international abstracting database covering key areas of women's and gender studies, indexing abstracts of articles from over **1,325** sources.



# Education Research Abstracts



*What it means to use the Education Research Abstracts online at Taylor & Francis.*



*Educational Research Abstracts Online (CERA) publishes the abstract for articles across all key areas of educational research*

CERA features state-of-the-art searching and browsing functionality, helping you to find all the articles you need, quickly and easily.

- Immediate online access to **over 230,000 records**
- A complete archive from 1995 onwards
- Sophisticated **search and browse** facilities
- An expanded specialist taxonomy
- Hypertext **linking to full-text articles** supported by CrossRef

# Research into Higher Education Abstracts



*What it means to use the Research into Higher Education Abstracts online at Taylor & Francis.*



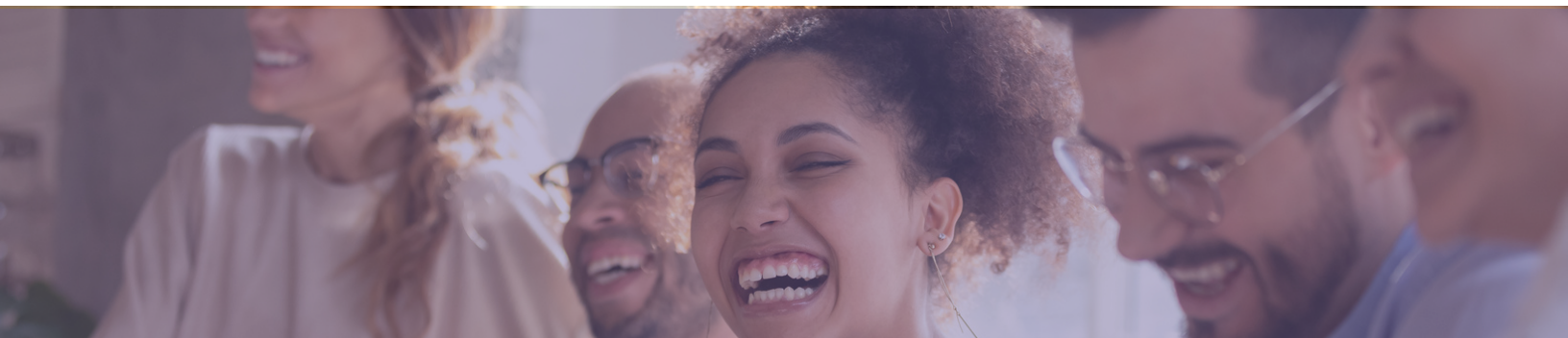
*Research in Higher Education Abstracts (CRHE) is specific to the field of Higher Education.*

Published on behalf of the *Society for Research into Higher Education*, CRHE exists to propagate knowledge about, and encourage discussion of, significant research into higher education.

- Immediate online access to **over 150,000 records**
- Access to over **17,000** abstracts
- A complete archive **from 1964 onwards**
- Sophisticated search and browse facilities
- An established specialist taxonomy
- Hypertext **linking to full-text articles** supported by CrossRef



# Studies on Women and Gender Abstracts



*What it means to use the Studies on Women and Gender Abstracts online at Taylor & Francis.*



Studies on Women and Gender Abstracts (CWSA) is an international abstracting database covering key areas of women's and gender studies

CWSA focuses on: women's studies (general); history; education; race and ethnicity; literary studies; media and culture; geography; law; social work and social care; social policy; sociology; health, medical, and psychology; and politics.

- Immediate online access to over **56,000** abstracts
- A complete archive **from 1995 onwards**
- indexed abstracts of articles from **over 1,325 sources**
- Sophisticated search and browse facilities
- An established specialist taxonomy
- Hypertext linking to full-text articles supported by CrossRef