

STANLEY®

Quick Access Keypad Gun Safe



STKPQA3SF



Quick Access Keypad Gun Safe

USER GUIDE

Model#: STKPQA3SF


7.9" x 10" x 11.8"

Thank you for purchasing the Stanley® Quick Access Keypad Gun Safe. This User Guide is intended to provide you with guidelines to ensure that operation of this product is safe and does not pose risk to the user. Any use that does not conform to the guidelines described in this User Guide may void the limited warranty.

Please read all directions before using the product and retain this guide for reference. This product is intended for household use only.

This product is covered by a limited one-year warranty. Coverage is subject to limits and exclusions. See warranty for details.

Safeguard your firearms in this durable steel safe. It features pre-drilled holes and hardware for easy mounting to a shelf in a closet or cupboard. The pop-open door gives you quick access to your belongings when you press the buttons in the sequenced you've programmed.

 FIREARM WARNING!

Never store firearms and ammunition together. Always store them separately in locking containers or cabinets. Make sure that your firearm is unloaded when stored. Be aware of and meet federal and local regulations governing firearm storage.

Included with your purchase:

- Stanley® Quick Access Keypad Gun Safe
- Emergency keys (2)
- Mounting hardware
- AAA batteries (4)
- User guide

Tools required for assembly

- Drill
- 3/16" drill bit
- Flat head screwdriver
- 10 mm wrench

Safety precautions

- This safe is intended for household use only.
- Use eye protection during the installation process.
- Keep liquids away from the control panel. Any spills can cause damage to the safe or electric shock.
- When moving the safe, remove and carry batteries to prevent them from falling out involuntarily.
- Never store firearms and ammunition together.
- Unload firearms before storing.
- This safe is not guaranteed to be fire or waterproof and should not be depended on to withstand these conditions.
- Do not store firearms in this safe if there is a risk of exposure to fire.
- Do not store your emergency keys in the safe.
- Please write down your combination and the safe's serial number and store them in a secure spot that you will remember.
- Keep keys and combination in a secure place away from children.

Parts

1. Key lock
2. Combination buttons
3. Reset button (inside safe)
4. Battery compartment (inside safe)
5. 3 Plastic gun holsters (not shown)



Set up your new Stanley Safe

Unlocking your safe for the first time

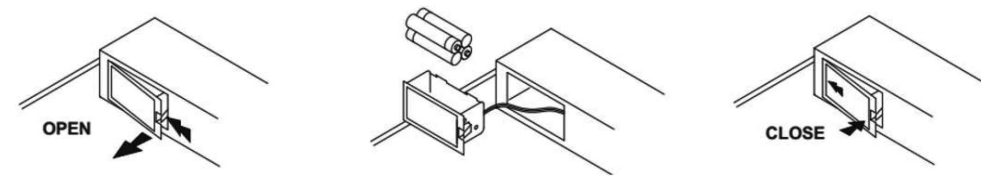
- Open the door with the emergency key in order to install the batteries. Batteries are located inside the safe.
- To open the safe, insert the key in the keyhole and turn clockwise until the door opens.

Note: The key can also be used in case you lose or forget your security code, or if the batteries run low. If you lose your key you can purchase a replacement key by contacting Stanley Customer Service at stanleysupport@camarketing.com or 844-348-2959. You must use the serial number for reference.

Installing the batteries

- Open the battery compartment by first pushing the tab and then pulling the entire compartment out as illustrated.
- Insert the 4 included AAA batteries, matching the correct polarities.
- Replace the battery compartment by hooking on the back end and snapping into place.

WARNING: Do not mix old and new batteries. Do not mix alkaline, standard and rechargeable batteries.

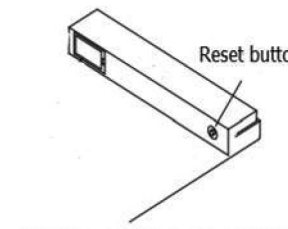


Turning the keypad sound on/off

- Note: The safe comes with the sound turned on.
- You can turn the sound off by pressing and holding down the button on the right side for 3 seconds until the buttons flash red.
- To turn sound back on, repeat the process above.

Create your PIN code

- For security purposes, you must program your own combination before opening the safe. The default sequence is: Left-Center-Right. Press the buttons in this order.
- Record your combination in this user guide, or in a secure location.
- Make sure the sound on the safe is turned on.
- To program, press and hold the red reset button, located inside the safe for 3 seconds, as illustrated.
- Once you press the reset button you will hear two beeps (when sound is turned on), and all 3 buttons will flash green twice.
- You will have 5 seconds to begin entering your combination. If you do not begin in 5 seconds you will need to begin this process again.
- Enter your own 3 – 8 button combination by pressing any combination of the 3 buttons on the safe. Example: right-left-center-left-right.
- Each press of a button will be followed by a beep, and all the buttons will light up green.
- If there is more than a 10-second delay between button pushes, you will need to start the process over from step 1.
- After you finish entering your combination you will have 10 seconds to press the reset button to record your new combination. If you do not press the reset button within 10 seconds, you will need to start the process over from step 1.
- When you press the reset button there will be two beeps, and all 3 buttons will flash green twice.
- Enter your combination again, and press the reset button again for final confirmation. Two beeps will sound and all 3 buttons will flash green twice. This means your combination has been successfully recorded.
- If 5 beeps sound and all 3 buttons flash red twice, you will need to start the process over from step one.



Opening the safe using your combination

- Enter your combination.

- The buttons will light up green, and there will be one beep (if the sound is turned on) after each part of the combination is entered. Note: You will have 10 seconds between each button push before the safe assumes you have entered the complete combination.
- If you enter the correct combination, all the buttons will flash green and the door will open.
- To close the safe, push the door until it automatically locks.

If you enter an incorrect combination

- If you enter an incorrect combination, the safe will beep 5 times (if the sound is turned on), and the buttons will flash red.
- If an incorrect combination is entered 3 consecutive times, the safe will beep 5 times (if the sound is on), and the buttons will flash red twice. The safe will automatically lock down for 2 minutes before you can re-enter your code.
- The safe will beep once (if the sound is on), and a green light will flash once to signal that the lockdown period is over.

Selecting a location for your safe

- The safe was designed to be mounted to a shelf. Failure to do so will compromise the safety and security of the safe. Install the safe in a secure, isolated, and dry area.
- The safe should always be kept out of reach of children.
- Please note that the safe needs to be in an upright position. This must be done for the locking mechanism to work properly. Failure to mount the safe in the correct position will compromise the safety and security of the safe.

Mounting the safe

- Remove the foam pad inside the safe to reveal the pre-drilled holes inside.
- Place the safe in your desired location on a shelf, and mark the location of the pre-drilled mounting holes on the bottom of the safe with a pencil.
- Remove the safe from the shelf where you will be securing it.
- Drill pilot holes for the screws – make sure they are 3/16” in diameter.

- Place the safe back on the shelf, and line up the pre-drilled holes at the bottom of the safe with the pilot holes you have just drilled.
- Using the provided screws and washers, secure the safe to the shelf
- Replace the foam pad inside the safe, using the adhesive backing to secure it in place.

Care and maintenance

- Clean the exterior of the safe with a gentle cleaner that is safe for painted metal surfaces.
- Use a dry cloth or soft brush to clean the interior of the safe.
- To ensure that your registered PIN is working, it is recommended that you test it every 6 months.

Troubleshooting

Problem	Explanation
The keypad is not working	The batteries may be depleted. Use the emergency keys to access the safe. Replace the batteries, reset the safe and try again.

Specifications

Body material: solid steel

Memory: 1 PIN code

Power source: 4 AAA batteries

Emergency keys included: 2

External dimensions: 6.5" x 11.7" x 16"

Internal dimensions: 6.3" x 11.5" x 14"

Door thickness: 1.5 mm

Body thickness: 4 mm

STANLEY®

Quick Access Keypad Gun Safe

STKPQA3SF

USER GUIDE

Customer Service: / Servicio al cliente: / Dos de couverture:

stanleysupport@camarketing.com

844-348-2959

All product warranties are covered by C&A Licensing LLC.

Todas las garantías del producto están cubiertas por C&A Licensing LLC.

Toutes les garanties de produits sont couvertes par C&A Licensing LLC.

ITEM#: **STKPQA3SF**

©2017 Stanley Black & Decker, Inc.

STANLEY® and the STANLEY Logo are registered trademarks of Stanley Black & Decker, Inc. or an affiliate thereof and are used under license.

Products are manufactured by: / Los productos son fabricados por:

Les produits sont fabriqués par:

C&A Licensing LLC, 114 Tived Lane East, Edison, NJ 08837 USA

C&A Marketing UK LTD, 167 Hermitage Road Crusader Industrial Estate,
London N4 1LZ, UK

Made in China

Hecho en China

Fabriqué en Chine

www.STANLEYTools.com