

The background of the slide is a light blue map of South Weymouth, showing a network of streets and roads. On the left side, there is a vertical light blue bar. On the right side, there is a stylized graphic of a building facade composed of a grid of white squares.

# NAS South Weymouth Redevelopment Plan

Hannah Axtell

# TABLE OF CONTENTS

01

THE SITE BACKGROUND & REDEVELOPMENT PROPOSAL

02

THE LEGS OF THE STOOL

-Social, Environmental, and Economic

03

CRISIS MITIGATION

-Soil/Water Contamination, Water, Sewage, Stormwater, Invasive Species, Climate Change, Energy, and Transportation

04

PLACEMENT ON SITE

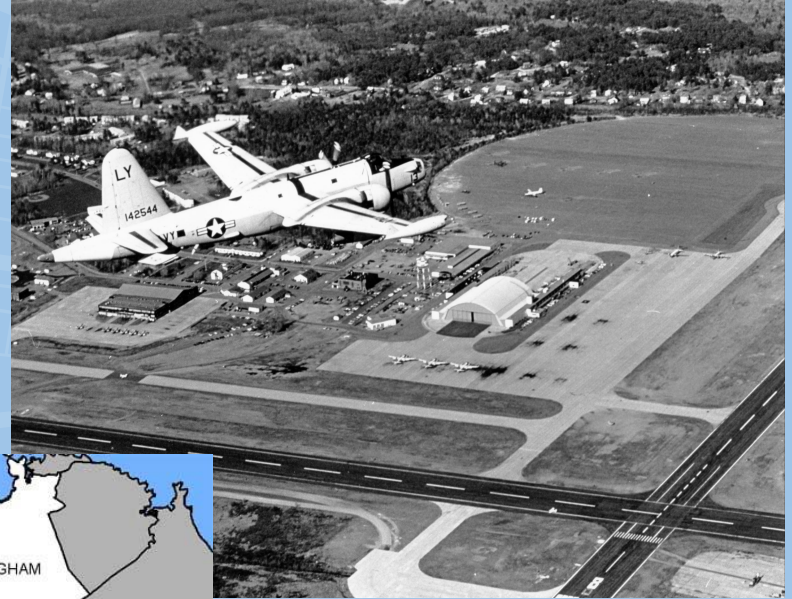
05

PUBLIC APPROVAL

# THE NAS SOUTH WEYMOUTH SITE BACKGROUND



Military Aircraft Patrolling in the 1940s during WWII



Aviation Training in the 1950s



# SITE VISION

Propose the 1,450 acres of land be handed back over to the local governments and be used as grounds to provide their communities with needed services:

- **Community Recreation Center**
- **Veteran Care Facility**
- **Affordable Housing**
- **Buffer zones (small parks and walking trails)**
- **Community Gardens**
- **Historic Landmarks**
- **Site Infrastructure (Transportation, Renewable Energy, Water/Sewage/Stormwater Treatment, Prevention of extreme weather events)**





# THE THREE LEGS OF THE STOOL



Economic



Environmental



Social



# THE SUPERFUND: SITE OUs and RIs

**Operable Units:** address geographic areas of a site, specific site problems, or areas where a specific action is required

**Remedial Investigations:** After a site is listed on the National Priorities List, an RI is performed. The investigations collect data to characterize site conditions, determine the nature of the waste, assess risk to human health and the environment, and conduct treatability testing to evaluate the site remedy potential and cost of the treatment

**Who funds these?**

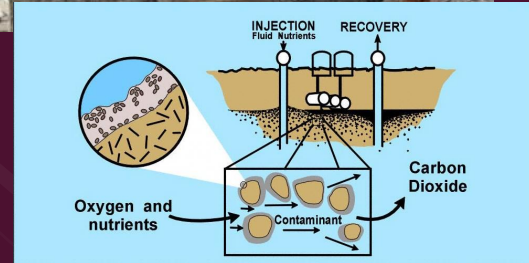
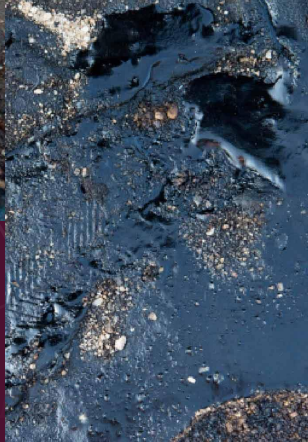


# THE WETLANDS



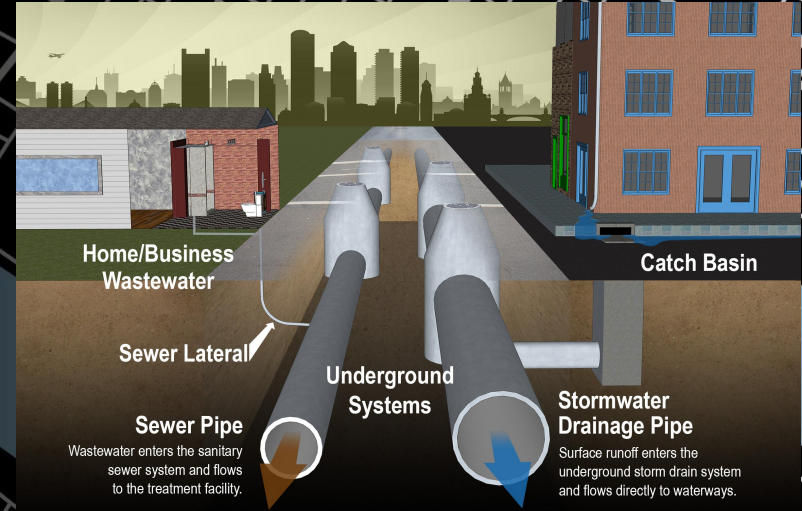


# SOIL CONTAMINATION





# WATER, SEWAGE, AND STORMWATER TREATMENT PLANT



# INVASIVE SPECIES AND RARE/ENDANGERED SPECIES



- Glossy Buckthorn
- The Common Reed
- Oriental Bittersweet
- Swallow Wort
- Purple Loosestrife

VS

- Eastern Box Turtle
- Grasshopper Sparrow
- Mocha Emerald
- Upland Sandpiper



# RENEWABLE ENERGIES: SOLAR AND WIND POWER

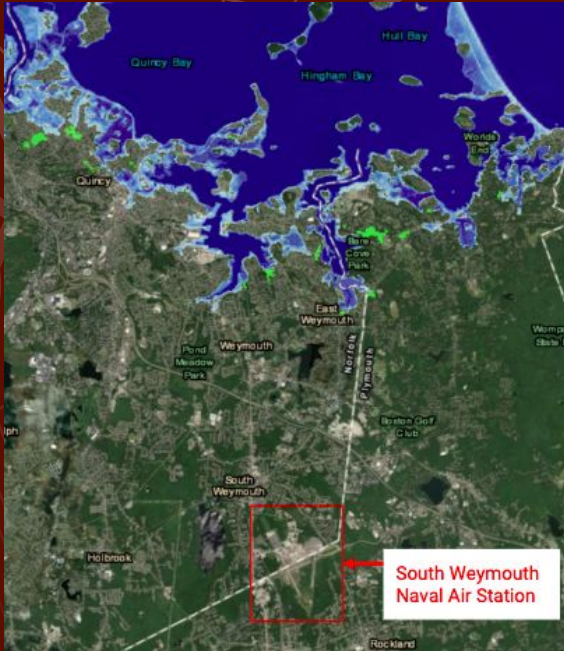
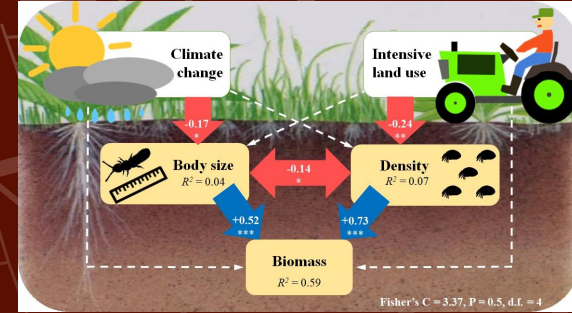
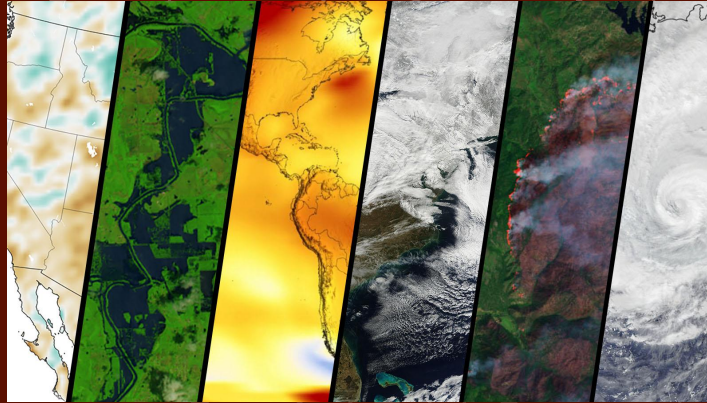


# TRANSPORTATION

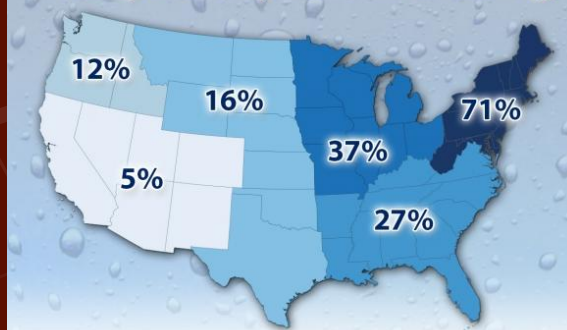




# CLIMATE CHANGE



## Heavy Downpours Increasing



cent increase from 1958 to 2012 in the amount of precipitation falling in very heavy events. Very Heavy Precipitation is defined as the heaviest 1% of all daily events from 1958-2012. Institute for Climate and Satellites, North Carolina State University and NOAA NCDC

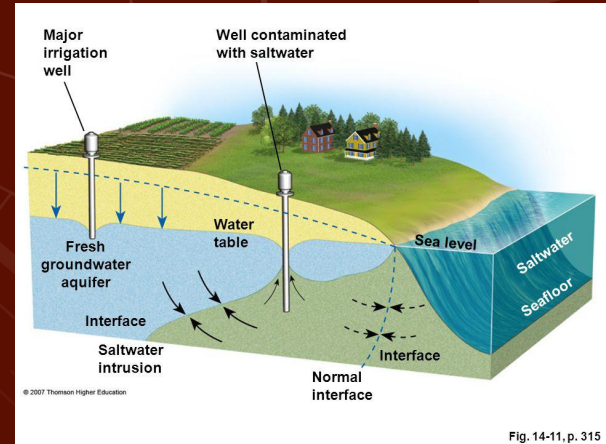


Fig. 14-11, p. 315

# SITE ACREAGE & PLACEMENT

25 ACRES

Community Recreation  
Center

10 ACRES

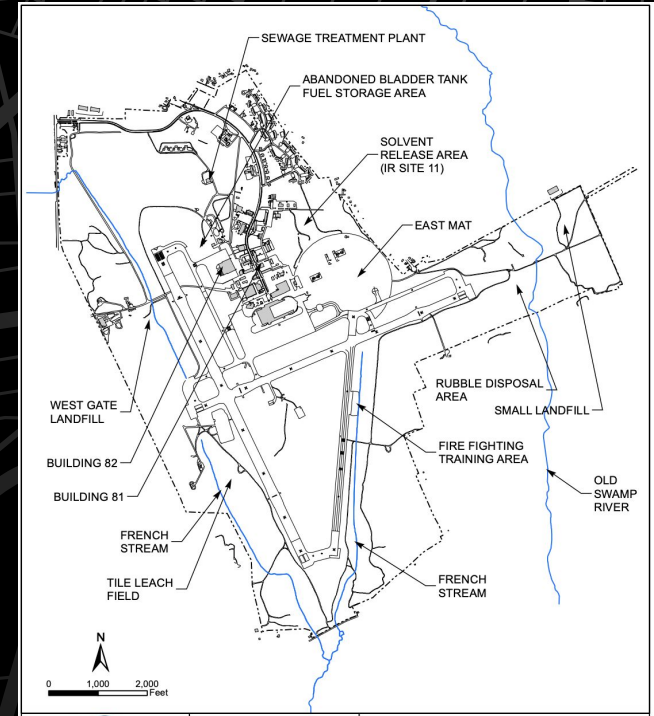
Veteran Care Facility

665 ACRES

Affordable Housing  
(~16,625 units)

750 ACRES

Remaining Infrastructure



# SOURCES

- Call, Phoebe. (September 2007). *Record of Decision: Operable Unit 1 West Gate Landfill*. Sems Publishing. <https://semspub.epa.gov/work/01/278802.pdf>
- DEIR. (October 16, 2006). *Volume I Text Naval Air Station Development Project*.
- ElementalGreen. (2020). *WIND VS. SOLAR — WHICH POWER SOURCE IS BETTER?*  
<https://elemental.green/wind-vs-solar-which-power-source-is-better/>
- EPA. (November 30, 2018). *What Is Superfund?*- Environmental Protection Agency, [www.epa.gov/superfund/what-superfund](http://www.epa.gov/superfund/what-superfund)
- EPA. (2019). *SOUTH WEYMOUTH NAVAL AIR STATION WEYMOUTH, MA*.  
<https://cumulis.epa.gov/supercpad/SiteProfiles/index.cfm?fuseaction=second.Cleanup&id=0101826#bkground>
- EPA. (2020). *Learn More About RE-Powering*. United States Environmental Protection Agency.  
<https://www.epa.gov/re-powering/learn-more-about-re-powering>
- Hyder, Zeeshan. (December 8, 2020). *What is a solar farm? Costs, land needs & more*. SolarReviews.  
<https://www.solarreviews.com/blog/what-is-a-solar-farm-do-i-need-one#cost>
- (Liyanage, Don). (2020). “Permeable Reactive Barrier.” *Permeable Reactive Barrier - an Overview | ScienceDirect Topics*, 2020,  
[www.sciencedirect.com/topics/earth-and-planetary-sciences/permeable-reactive-barrier](http://www.sciencedirect.com/topics/earth-and-planetary-sciences/permeable-reactive-barrier)
- Mass.gov. (May 10, 2013). *301 CMR 11.00: MEPA Regulations*. [www.mass.gov/regulations/301-CMR-1100-mepa-regulations](http://www.mass.gov/regulations/301-CMR-1100-mepa-regulations)
- National Parks Service. (n.d.). *Prescribed Fire Used to Remove Invasive Species and Reduce Hazardous Fuels-U.S. National Park Service: U.S. Department of the Interior*, [www.nps.gov/articles/agfo-rxfire.htm](http://www.nps.gov/articles/agfo-rxfire.htm)
- SnoFlo. (March 21, 2021). *Old Swamp River Near South Weymouth Flow Report*. SnoFlo.  
<https://snoflo.org/report/flow/massachusetts/old-swamp-river-near-south-weymouth/>
- U.S. Forest Service. (April 24, 2014). *Biological Control - US Forest Service Research & Development*, 2014,  
[www.fs.fed.us/research/invasive-species/control/biological.php](http://www.fs.fed.us/research/invasive-species/control/biological.php)
- Robertson, Roxy. (May 28, 2020). *Effects of Solar Gardens on Vegetation, WSB*, [www.wsbeng.com/effects-of-solar-gardens-on-vegetation/](http://www.wsbeng.com/effects-of-solar-gardens-on-vegetation/)
- Windustry. (n.d.). *How much do wind turbines cost?*  
[https://www.windustry.org/how\\_much\\_do\\_wind\\_turbines\\_cost#:~:text=The%20costs%20for%20a%20utility.%243%2D%244%20million%20installed](https://www.windustry.org/how_much_do_wind_turbines_cost#:~:text=The%20costs%20for%20a%20utility.%243%2D%244%20million%20installed)