



# WE'RE ANSWERING THE CALL.



United Way of Rhode Island

“Hard times don’t discriminate—sometimes life just happens.”

— Shaplaie Brooks, United Way of Rhode Island 2-1-1, Diversion Specialist

## Rhode Islanders just like you need our help. How do we know?

We’ve talked to thousands of moms and dads, young people just starting out, seniors, workers and people who need jobs, through our 2-1-1 call center.

Last year, we took 195,344 requests for help finding food, housing, health services, and more importantly: opportunity. Rhode Islanders are looking for ways to better provide for themselves and their families.

We believe in increasing their opportunities and yours. How? By delivering much-needed services, funding programs that work, and

by sharing the stories that we hear every day—from Rhode Islanders just like you—with our community leaders and elected officials.

### **Zero overhead.**

All of our fundraising and administrative costs are covered by a permanent trust, which means all of your contributions go directly to the people and programs that need it most.

***With your help, we can change lives and strengthen our community.***



## We help families take care of the basics.

Because we talk with Rhode Islanders every day, we hear what they most need.

Last year, we invested nearly \$475,000 into programs that help people find a permanent home.

Not only that, 2-1-1 answered more than 300,000 requests for help with shelter, food, health information, and other basic needs.



**94,258**

Number of requests 2-1-1 received for help with **food** in 2016.



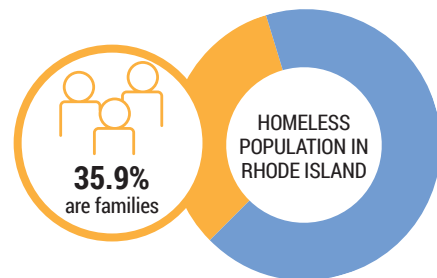
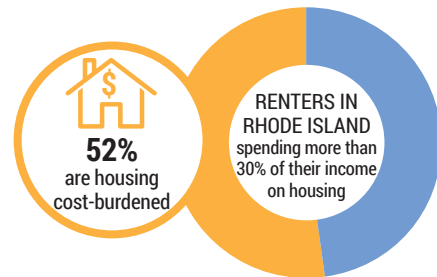
**112,563**

Number of requests 2-1-1 received for help with **housing/shelter** in 2016.



**7,140**

Number of requests 2-1-1 received for help with **foreclosure prevention** in 2016.



## We help adults with the tools they need for healthy lives.

There are two types of requests to 2-1-1 that continue to have the highest call volume year after year: **financial assistance** and **health information**. In fact, requests for health information have been steadily increasing since 2008.

Last year, we committed to delivering \$977,828 to programs that give adults the tools they need to better manage

their finances and save more of the money they earn while leading healthy lives.

Not only that, we took an active role in the Volunteer Income Tax Assistance (VITA) program, which provides free tax preparation for working people and families. More than \$21 million was returned to working Rhode Islanders in 2016.



**141,035**

Over one hundred forty thousand Rhode Islanders lived in poverty in 2015.



Rhode Island has the highest rate of its residents living in poverty among the New England states.



**159,597**

Number of requests 2-1-1 received for financial assistance in 2016.

*Latest Poverty and Income Figures Show Too Many Rhode Islanders Still Struggle to Make Ends Meet, Economic Progress Institute, <http://economicprogressri.org/index.php/2016/09/15/latest-poverty-figures-show-too-many-rhode-islanders-still-struggle-to-make-ends-meet-2015/>*

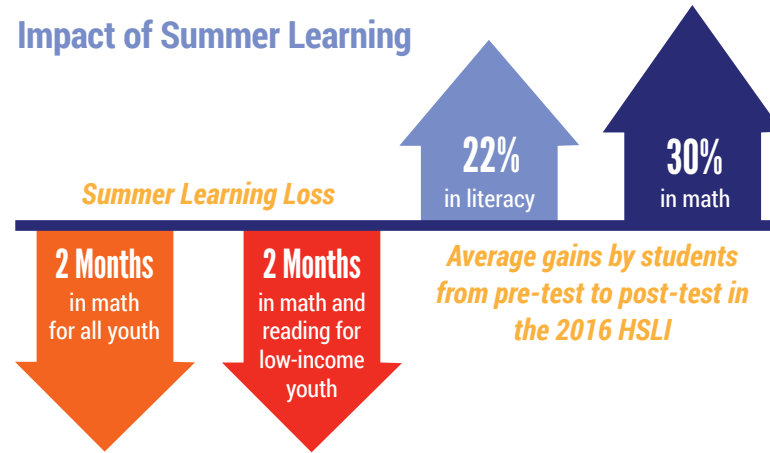
## We help kids fall in love with learning.

2-1-1 connects parents and families to summer learning programs as well as food pantries during those long summer months when children don't have access to school lunch.

Last year, United Way put \$864,314 toward making sure children receive a well-rounded education. Why? Because we believe an investment in their future is an investment in Rhode Island's future.

Not only that, we work with partners in education to offer the Hasbro Summer Learning Initiative, a six-week summer model that improves children's skills in math and reading while giving working parents peace of mind.

### Impact of Summer Learning



*Cooper, H., Nye, B., Charlton, K., Lindsay, J., & Greathouse, S. (1996). The effects of summer vacation on achievement test scores: A narrative and meta-analytic review. Review of Educational Research, 66, 227-268.*

## We help youth and adults reach school and career goals.

Because nearly half of households in the United States do not have the savings or support to handle emergencies,\* 2-1-1 offers wrap-around service. They make sure they're tackling the initial problem as well as what caused the problem.

We support programs that help Rhode Islanders gain the skills they need to explore new options in training, employment, and careers. We know that a thriving economy depends on everyone having the tools they need to participate.

Last year, \$449,697 helped Rhode Islanders overcome challenges to finding a job, including improving skills in math, reading, writing, and digital literacy, as well as learning English as a second language.



**75,000**

Working-age Rhode Islanders do not have a high school diploma or equivalency



**20%**

Adults with a high school degree are more likely to work full-time and average 20% higher earnings



**35,000**

Rhode Islanders have limited English language skills

*\*CFED Assets and Opportunity Scorecard*

## We help solve social problems that matter to you most.

We are positioned at the cross section of community, nonprofits, corporations, and government. What does that mean for you? More opportunities for you to help solve social problems that matter to you most through gifts of expertise, time, and money. Last year, we placed 2,793 volunteers in the communities that needed them.

Not only that, we offer more than 60 events throughout the year that range from family-friendly to professional development opportunities for young leaders and women.

**23%** of Rhode Island residents volunteer. In 2015, Rhode Island ranked 39th among the 50 states in volunteerism.



Corporation for National & Community Service, <https://www.nationalservice.gov/vcla/state/Rhode-Island>

## We believe in increasing opportunities for all Rhode Islanders. That's why we're asking our legislators to say yes to:



### Housing for all Rhode Islanders, by

- Creating permanent funding to provide for long-term housing development.
- Protecting the funding for housing rental vouchers.



### Increasing access to afterschool and summer learning for all Rhode Island youth, by

- Working to reach the goal of 75 percent of third graders reading at grade level or higher by 2025.
- Increasing funding for quality afterschool and summer learning programming.



### Increasing access to lifelong learning for all Rhode Islanders, by

- Increasing funding for adult education to accommodate the estimated 1,000+ adults on waitlists for classes statewide.



### Financial stability for all Rhode Islanders, by

- Expanding the Earned Income Tax Credit—the nation's most effective anti-poverty program for working families—to 20 percent so more low-income workers are eligible to receive a larger refund.

After ten years and 1.6 million calls, we're in a unique position to know firsthand what Rhode Islanders need most.

## At United Way of Rhode Island, we're helpers. And we want to close the gap.

The first step is making sure Rhode Islanders have a place to turn. Three simple numbers, one human connection, free and confidential, 2-1-1 is available 365 days a year, 24-hours a day.

From there, we're looking to build access to proven programs and services. We accomplish this not only through funding programs that deliver, but also creating

professional development opportunities for local non-profits to build their skillsets.

Through local programs, last year we helped more than 183,000 Rhode Islanders. But we can't change lives and strengthen our community alone.

**That's where you come in. Join us.**



**Join us. We can't do it alone.  
Make a gift to our Community Impact Fund today.**

50 Valley Street, Providence, Rhode Island 02909  
phone: (401) 444-0600 • fax: (401) 444-0635  
[www.LIVEUNITEDri.org](http://www.LIVEUNITEDri.org)

