



Hi Carol,

Has your current phone seen better days? Want something with a bigger screen, better camera or longer battery life?

Your EE SIM only plan gives you freedom to upgrade to a new phone whenever you like, without paying any early upgrade fees. So why not get your hands on one of these awesome phones powered by Android – right now!



Upgrade now

Google Pixel 8



Want to try out the local cuisine on holiday, but can't make sense of the menu? Pixel 8 is built with Google AI, which makes it even easier to connect in new languages. With Live Translate, you can interpret face-to-face conversations in 49 languages in real time, transcribe messages, and translate signs. Plus, with Google AI you can filter out spam calls, avoid call queues, and cleverly edit photos and videos.

Remember the best nights out with your buddies with the Galaxy S23 FE's Nightography camera.

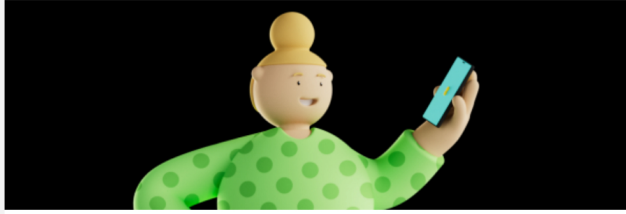
The pro-level camera, which has zoom and ultra-wide lenses, captures vivid and detail-packed photos from your evening escapades, while the super-sharp selfie lens delivers share-worthy snaps of you and your besties enjoying good times.

SAMSUNG Galaxy S23 FE



And don't worry, you can easily transfer your data from your old phone to your new one. It's never been easier. Simply connect the two phones with a cable or pair them wirelessly over WiFi to securely copy your contacts, photos, calendars and more.

Upgrade now



EE app



Help



Terms and Conditions

UK'S BEST NETWORK: Rankings based on the RootMetrics® UK RootScore® Report: H2 (July - Dec) 2022. Tested at locations across the UK with the best commercially available smartphones on 4 national mobile networks across all available network types. Your experiences may vary. The RootMetrics award is not an endorsement of EE. Visit ee.co.uk/claims for more details.



Getting in touch

Feedback or questions? Visit our [Contact us](#) page. (Don't reply to this email, we won't see it.)

Staying in the loop

Add EE@messages.ee.co.uk to your address book to make sure our emails always get to your inbox.

How do we use your personal information?

You can find details about how we use your personal information by visiting our [privacy policy](#).

All information was correct on the date we sent this email. We're sending this email to the address coral.hollyman@ee.co.uk we have registered for you to receive promotional messages about your EE products and services.

We'd be sad to say goodbye, but if you would like to unsubscribe, click [here](#).

EE Limited is registered in England and Wales company number 02382161. Registered office: 1 Braham Street, London, UK, E18EE.