

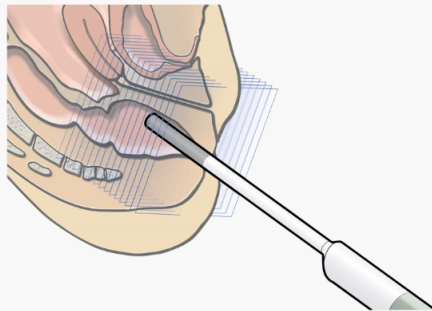
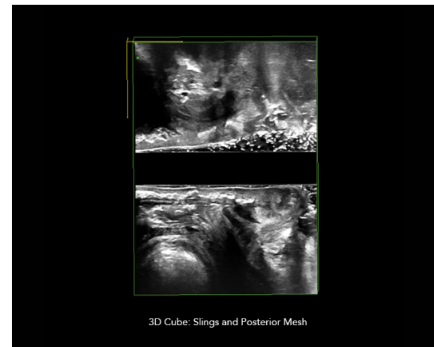
PELVIC FLOOR IMAGING



THE INFORMATION YOU NEED, IN REMARKABLE DETAIL

Advanced ultrasound imaging for the complete pelvic floor picture

Surgical Visualization and Guidance's ultrasound imaging with advanced 3D architecture helps you perform multicompartment pelvic floor exams, so you can visualize anatomy, plan treatment, and evaluate outcomes.



Endoanal: Posterior compartment (rectum and anal canal)

MULTICOMPARTMENT PELVIC FLOOR EXAMS FOR THE COMPLETE PICTURE

When assessing dysfunctions of the pelvic floor, experts generally promote a global approach in which the anterior, middle, and posterior pelvic compartments are examined to evaluate pelvic floor dysfunctions.

Multicompartment imaging using transperineal, endovaginal, and endoanal scanning enables you to get the information you need for the full pelvic floor picture. 3D imaging allows you review the 3D dataset after the patient's visit.

Real-time, dynamic exams help you visualize anatomy, plan treatment, and evaluate outcomes for:

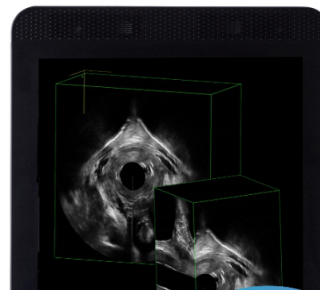
- Urinary and fecal incontinence
- Pelvic and vaginal pain
- Pelvic and organ prolapse
- Tapes and meshes
- Vaginal cysts and masses

RENDER IT VISIBLE

With high-definition, detailed images and an enhanced, intuitive workflow, our ultrasound imaging technology helps you visualize anatomy for the complete pelvic floor picture.

Easily manipulate 3D datasets

- Manipulate 3D datasets to see detailed structures from any angle you choose
- Angle and cut planes intuitively
- Compare 3D datasets by having several datasets open simultaneously



Maintain control with advanced tools and features

- Easily navigate different tools and functions
- Label 3D datasets for easy reference
- Move easily between render mode and non-render mode

Enhanced user experience

- Incorporated help functionality
- Advanced measurements and annotations



NEW BKVIEWER FOR YOUR OFFLINE WORKSTATION

View 3D datasets and save in a DICOM-compliant format—all offline.

bkViewer software allows you to review 3D datasets offline, with an easy-to-use interface that emulates the ultrasound system workflow.*

***bkViewer is not for diagnostic use.**



ASSESS SLICE BY SLICE

Use the multi-slice view to step easily through a 3D cube and assess one slice at a time.



REVIEW PLANES INTUITIVELY

Choose, manipulate, and angle planes with the intuitive controller.



DICOM-COMPLIANT

Save 3D datasets in a DICOM-compliant format and convert L3D files to DICOM.



EASILY EXPORT DATASETS

Export 3D datasets to 3D-compatible PACS systems, and incorporate your datasets into presentations, training tools, and more.

LEARN MORE ABOUT BKVIEWER SOFTWARE

[GO TO BKVIEWER](#)



TRANSDUCERS FOR PELVIC FLOOR IMAGING

Our specialty transducers are ideal for multicompart ment pelvic floor exams. The specialized and sterilizable endocavity 3D and anorectal 3D transducers allow you to see the structural details you need with 3D data that can be reviewed after the patient's visit. The compact transperineal transducer has a small footprint for transperineal and translabial exams.





bkActiv

- Enhanced image resolution that helps you visualize normal and abnormal anatomy
- Advanced 3D architecture for anorectal imaging enables easy review of 3D datasets
- Intuitively simple, sealed glass user interface and an adjustable monitor to help you quickly evaluate your patient and perform procedures with ease
- Access to Surgical Visualization and Guidance's sterilizable, high-performance transducers for pelvic floor examinations

[VIEW BKACTIV SYSTEM](#)



bk3000

- Ultra high-resolution ultrasound imaging
- Advanced 3D architecture for pelvic floor imaging enables easy review of 3D datasets
- Excellent image quality for visualization of structures
- Move, adjust, and customize quickly
- Acquire images instantly
- Access to BK's high-performance, sterilizable transducers

[VIEW BK3000 SYSTEM](#)



bkSpecto

- Personalized unique interface for quick evaluation of your patient, and to perform procedures with ease
- Advanced 3D architecture for pelvic floor imaging enables easy review of 3D datasets
- All-glass interface allows for easy cleaning and disinfection
- Excellent image quality for visualization of structures
- Access to BK's high-performance, sterilizable transducers

[VIEW BKSPECTO SYSTEM](#)

REQUEST A DEMO OR GET MORE INFORMATION

First name*	Last name*
<input type="text"/>	<input type="text"/>
E-mail*	Phone number*
<input type="text"/>	<input type="text"/>
Hospital or Clinic name*	Country*
<input type="text"/>	<input type="text" value="Please Select"/>
Comments	
<input type="text"/>	

By submitting this form, we believe that you would be interested in occasionally receiving additional information and communications related to BK Medical products. BK Medical respects your privacy and personal information. We will not share your personal information with any third-parties, except as otherwise noted in our [Privacy Policy](#).

I do not wish to receive additional information or communications related to BK Medical products

SUBMIT

[Home](#) [Support](#)
[Contact](#) [Blog](#)

BK Medical®

BK Medical is advancing its mission with **GE HealthCare**. Together, we will reach more customers and continue to empower surgeons to make critical decisions that allow for better care, faster procedures, and reduced complications. We are committed to designing active imaging systems that help surgeons visualize anatomy and lesions, guide interventions, and navigate inside the human body. We continue to change the standard of care in surgical interventions with real-time visual guidance, giving surgeons the information needed to immediately make critical decisions.

[Sitemap](#)
[Privacy Policy](#)
[Terms and Conditions](#)

