

**Pancreatic head mass, visualized with Biplane Transducer**

30%  
of pancreatic resections<sup>5</sup>

## DISCOVER THE NEW bkActiv FOR LIVER PROCEDURES AND MORE



### Surgical Visualization and Guidance Systems

## bkActiv

- **Enhanced Visualization:** Improved algorithms for greater details around lesion borders, and automated high-resolution image settings.
- **Monitor Progress:** Compare live images with previous scans simultaneously using Dual Live Compare and Picture in Picture modes.
- **Surgeon Control:** Remote control allows surgeon control of the image in the sterile field.
- **Simple and Customizable UI:** Intuitively simple, Tru-Sense™ touch screen with customized user profiles for Basic to Advanced usage.
- **Adjustable Monitor:** View images in portrait or landscape orientation, with monitor on an extendable, flexible arm for small spaces.
- **On-Demand Videos:** Instructional videos on the system to quickly refresh on image orientation and needle guide assembly.

[View System](#)



## bk5000

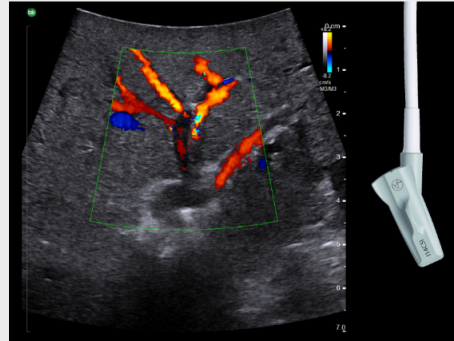
- High-resolution, real-time images with superb anatomical details.
- Immediate, auto-optimized imaging using the No-touch Autogain and Auto Focus features.
- Up to two hours of plug-free imaging.
- Sterilizable remote control for convenient control of the system in the sterile field.
- Small system footprint to fit in the OR.

[View System](#)

## PERFORMANCE THAT COUNTS

FULLY STERILIZABLE, SPECIALIZED TRANSDUCERS, NO MATTER YOUR

APPROACH



Intraoperative Transducer I14C5I

I-shaped transducer ideal visualizing anatomy in transverse and sagittal planes.



1. D'Hondt M, Vandenbroucke-Menu F, Prévaille-Ratelle S, et al. Is intra-operative ultrasound still useful for the detection of a hepatic tumour in the era of modern pre-operative imaging? HPB. 2011;13(9):665-669. doi:10.1111/j.1477-2574.2011.00349.x
2. Langella S, Russolillo N, Perotti S, Ostuni E, Forchino F, Ferrero A. Intraoperative ultrasound staging for colorectal liver metastases in the era of liver-specific magnetic resonance imaging: is it still worthwhile? HPB. 2019;21. doi:10.1016/j.hpb.2019.10.1261
3. <https://www.ncbi.nlm.nih.gov/books/NBK6975/>
4. <https://www.sages.org/publications/guidelines/guidelines-for-the-use-of-laparoscopic-ultrasound/>
5. Kolesnik O, Lukashenko A, Shudrak A, Golovko T, Lavryk G, Huralevych J. Intraoperative ultrasonography in pancreatic surgery: Staging and resection guidance. Experimental Oncology. 2015;37(4):285-291. doi:10.31768/2312-8852.2015.37(4):285-291

\*The Rob12C4 Robotic Transducer is compatible with bk5000 software version 5.16.2 and higher and bkActiv software version of 5.16.4 and higher.

bkActiv is not available in all countries. Ask your local representative about your options.

### Request more information

First name*	Last name*
<input type="text"/>	<input type="text"/>
Email*	Phone number*
<input type="text"/>	<input type="text"/>
Company name	
<input type="text"/>	
Country*	
<input type="text" value="Please Select"/>	
Specialty	
<input type="text" value="HPB Surgery"/>	

By submitting this form, we believe that you would be interested in occasionally receiving additional information and communications related to BK Medical products. BK Medical respects your privacy and personal information. We will not share your personal information with any third-parties, except as otherwise noted in our [Privacy Policy](#).

I do not wish to receive additional information or communications related to BK Medical products

Submit

[Home](#)[Support](#)[Contact](#)[Blog](#)**BK Medical®**

BK Medical is advancing its mission with **GE HealthCare**. Together, we will reach more customers and continue to empower surgeons to make critical decisions that allow for better care, faster procedures, and reduced complications. We are committed to designing active imaging systems that help surgeons visualize anatomy and lesions, guide interventions, and navigate inside the human body. We continue to change the standard of care in surgical interventions with real-time visual guidance, giving surgeons the information needed to immediately make critical decisions.

[Sitemap](#)[Privacy Policy](#)[Terms and Conditions](#)