

## The WalkyDog Redesign sample

In this document, you can find my redesigned user guide for how to setup and use the WalkyDog product. This redesign was created for practice purposes only and has not been offered to the owner of the product.

The file includes the original user guide followed by my edited guide.

Why this document?

This document shows my ability to critically evaluate and edit an existing user guide.

I made notable changes, including:

- Changing the page layout so that the user could easily look at the mechanical drawing while reading the guide
- Removing excessive and repetitive information
- Rearranging how-to steps in a more logical order
- Using the mechanical drawing's terminology in the how-to for consistency and clarity (although this means I couldn't use the US spelling for "aluminium", and some of the terms sound strange)
- Making use of STE (Simplified Technical English) where I could and generally simplifying the language
- Changing some information into a table form for easier skimming

Aspects I didn't change:

- The logo and mechanical drawing, as my focus was on improving the usability rather than changing the style
- The legal disclaimer is almost unchanged, since I am unsure how much "legal talk" can be changed

What challenges did I face?















Some change decisions were more challenging to make. For example, the original guide made the step of using a rubber band seem optional (it could prevent scratching or be used in a bike with a non-standard pole). I decided to consider it a necessary step, since who wouldn't want to protect their bike from scratches?

There are some parts in the mechanical drawing that weren't included in the original how-to steps, and so I'm unsure whether some relevant step involving them is missing from the steps. I tried to make the guide as clear as possible with the information that I had.



## RIDE ALONG WITH SAFETY...

The WalkyDog® is a tool to conduct and train the dog by riding him with the bike.

-  1 It grants the full safety of the trinomial biker-bike-dog in each single moment during riding;
-  2 It allows the biker to safely indicate the change of his direction, since no hand is engaged in holding the dog;
-  3 It allows the biker to perform several actions, such as smoking, answering the mobile phone, etc. (of course, always keeping in mind the highway code regulations and the common sense!);
-  4 It grants the possibility to ride two dogs at a time, one on each side of the bike, making use of two WalkyDog®;
-  5 It allows both the biker and the dog to train together, keeping both "guys" fit;
-  6 It can be easily disconnected from the bike in less than one second, when you are using your bike without your dog;
-  7 It can be transformed in a damped leash in practically no time, thus allowing the biker to control his dog also when not riding the bike;
-  8 It can be installed on the bike in less than 5 minutes by everybody;
-  9 It can be easily moved from one bike to the other;
-  10 It is universal, meaning that you can install it on practically all types of existing bikes: mountain bikes, city bikes, new bikes, old bikes, small ones, big ones, etc...;
-  11 It doesn't request any training for both the biker and the dog;
-  12 It is very light and absolutely not cumbersome;
-  13 It can be used on all types of terrain, both on-road and off-road, always keeping the safety of your driving unaltered;
-  14 In case of accident, it grants that the dog does not detach from the bike, dangerously wondering among the traffic.

### MOUNTING OPERATION:

The assembling is very easy, takes no more than five minutes and you will need just an hexagonal wrench to fix the screws.

1. after opening the packaging, separate the two parts of the fixing jaw (7 and 8) from the tubular bar (5);
2. position the two parts of the fixing jaw on the saddle-holding pole, slightly tightening the screws (9). (Allow the jaw to stay into position but still free to be adjusted);
3. in case of non-standard saddle holding pole diameter (or simply to avoid scratches) wrap the rubber band (6) on the pole before positioning the jaw.
4. engage the tubular bar (5), orienting it backwards of about 20°.
5. now, just tighten the screws firmly, and you are ready to go.
6. make sure the quick-lock (11) is completely engaged.

### ADJUSTING THE PRODUCT:

The adjustment of the cord length is obtained by regulating the number of springs composing the internal shock-absorbing system. By reducing the number of springs, you will obtain an elongation of the cord and, temporarily, a reduction of the spring compliance power, thus adapting the WalkyDog® to small sized dogs. Access to the internal spring system is obtained by unscrewing the front bullet terminal (3) and extracting the cord (2). Undo the spring holding knot on the cord's edge and extract one or two springs; tie the knot on the cord's edge again before re-inserting the system inside the tubular bar.

#### SEE BELOW FOR GENERAL ADJUSTING SUGGESTIONS:

- use 3 springs for adult dogs such as Alaskan Malamutes, Dobermans and the like;
- use 2 springs for adult dogs such as Siberian Husky, Golden Retriever, Dalmatians, German Shepherds and the like;
- use 1 spring for puppies of the above-mentioned breeds and generally for small sized dogs.

#### TROUBLESHOOTING:

- the fixing jaw loses its grip: every now and then, just make sure the jaw's screws are firmly tightened;
- the cord is too short/long for the dog: adjust the number of internal springs until the desired length is achieved.
- the cord starts fraying: our cords are selected for use with **WalkyDog®**. Nevertheless, due to specific use conditions/dog behaviour they can deteriorate (nothing lasts for ever!). Replace them: any similary shaped cord with some diameter can do.

Now you're ready to have fun with your dog, in full safety and with both your hands tightly holding the handlebars!

Anyway, pay full attention to regulate the intensity, the length and the speed of the training session to the fitness and health conditions of your dog.

And once your bike is parked, simply disengage the **WalkyDog®** and use it as a comfortable leash!

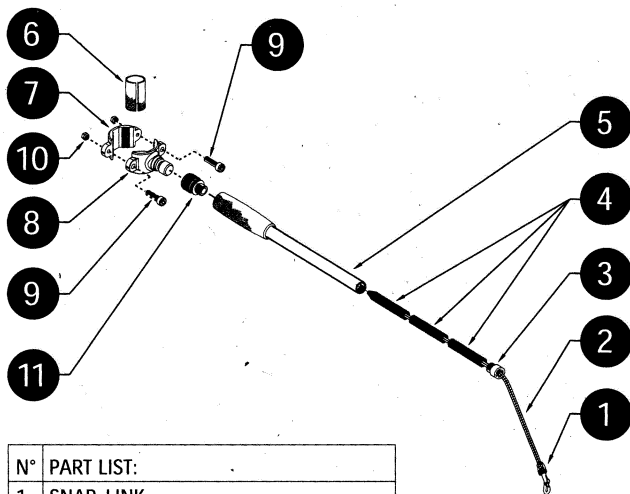
#### IMPORTANT NOTE AND LEGAL DISCLAIMER

The **WalkyDog®** is a product specifically designed for the professional endurance training of competition dogs. Before using the product on the public road, carefully check the Highway Code.

BICE SRL declines each and every responsibility that may derive from a use of the product that does not comply with the laws and regulations in force.

EUROPEAN AND U.S. PATENTS PENDING.

## MECHANICAL DRAWING



N°	PART LIST:
1	SNAP-LINK
2	CORD
3	BULLET-LIKE TERMINAL
4	COMPRESSION SPRINGS
5	ALUMINIUM POLE
6	RUBBER BAND
7	BACK FIXING JAW
8	FRONT FIXING JAW
9	SCREWS
10	CONNECTOR
11	QUICK LOCK SYSTEM

Made in Italy

Bice S.r.l.  
Via Traversetolo, 186  
Marano (Parma) - Italy  
Tel. +39 0521 394040  
Fax +39 0521 394035  
[www.walkydog.com](http://www.walkydog.com)  
[info@walkydog.com](mailto:info@walkydog.com)



The WalkyDog® is a tool that lets a dog safely run alongside a bike.

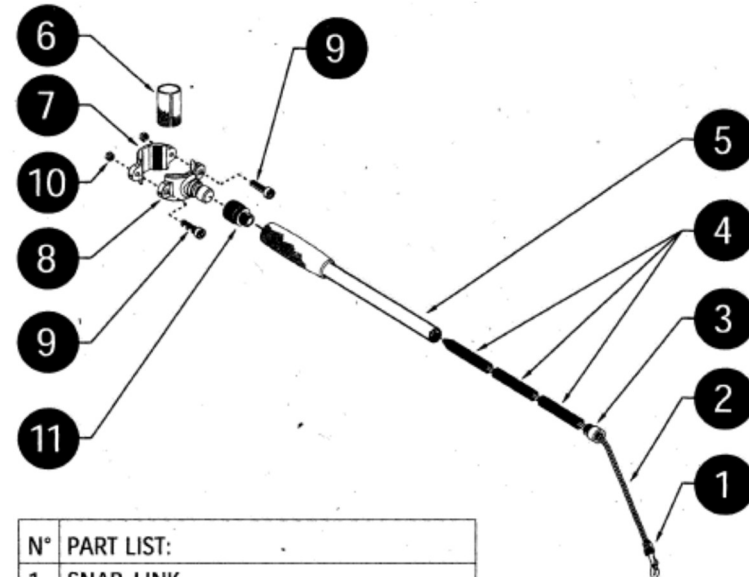
### Key features

- Connects the dog securely to the bike.
- Is easy to connect and disconnect from a bike.
- Lets the biker keep both hands free.
- Can be used as a leash between rides.
- Works universally for different bike models.
- Is safe to use on different types of terrain.
- Can be combined with a second WalkyDog® to use with two dogs.

### How to connect the WalkyDog®

Required tools: A hexagonal wrench

1. Open the packaging. Separate the front and back parts of the fixing jaw (7 and 8) from the aluminium pole (5).
2. Wrap the rubber band (6) around the saddle-holding pole of your bike.
3. Put the front and back parts of the fixing jaw in position over the rubber band. Tighten the screws (9) enough for the jaw to stay in position. Do not tighten the screws firmly.
4. Engage the quick lock (11) and the aluminium pole (5) with the jaw. Point the pole backwards in an angle of about 20°.
5. Tighten the screws firmly with a hexagonal wrench.
6. Make sure the quick lock (11) is completely engaged.



N°	PART LIST:
1	SNAP-LINK
2	CORD
3	BULLET-LIKE TERMINAL
4	COMPRESSION SPRINGS
5	ALUMINIUM POLE
6	RUBBER BAND
7	BACK FIXING JAW
8	FRONT FIXING JAW
9	SCREWS
10	CONNECTOR
11	QUICK LOCK SYSTEM

### How to adjust the cord length

To adjust the cord length for smaller dogs, decrease the number of compression springs inside the aluminium pole.

1. Unscrew the bullet-like terminal (3).
2. Remove the cord (2).
3. Open the knot on the cord's edge that holds the compression springs.

4. Remove one or two compression springs (4).
5. Make a knot on the cord's edge.
6. Put the cord back inside the aluminium pole.

### Suggested adjustments

Compression springs	Age	Example breeds
3	Adult	Alaskan Malamute, Doberman
2	Adult	Siberian Husky, Golden Retriever, Dalmatian, German Shepherd
1	Puppy/adult	Puppies of above-mentioned breeds/ Small sized adult dogs

### Troubleshooting

Issue	Solution
The fixing jaw is losing its grip	Make sure the screws are tightened firmly.
The cord is too short or too long for your dog	Adjust the number of compression springs inside the aluminium pole.
The cord is worn out	Replace the cord with any cord of a similar shape.

Now you know how to connect and use WalkyDog®!

Make sure that the length and the speed of the bike ride are safe to the fitness level and health condition of your dog.

### IMPORTANT NOTE AND LEGAL DISCLAIMER

The WalkyDog is a product specifically designed for the professional endurance training of competition dogs. Before using the product on public roads, carefully check local laws and regulations.

BICE SRL declines each responsibility that may derive from a use of the product that does not comply with the laws and regulations in force.

**European and U.S. patents pending.**

**Made in Italy**

**Bice S.r.l.**  
Via Traversetolo, 186  
Marano (Parma) - Italy  
Tel. +39 0521 394040  
Fax +39 0521 394035  
[www.walkydog.com](http://www.walkydog.com)  
[info@walkydog.com](mailto:info@walkydog.com)