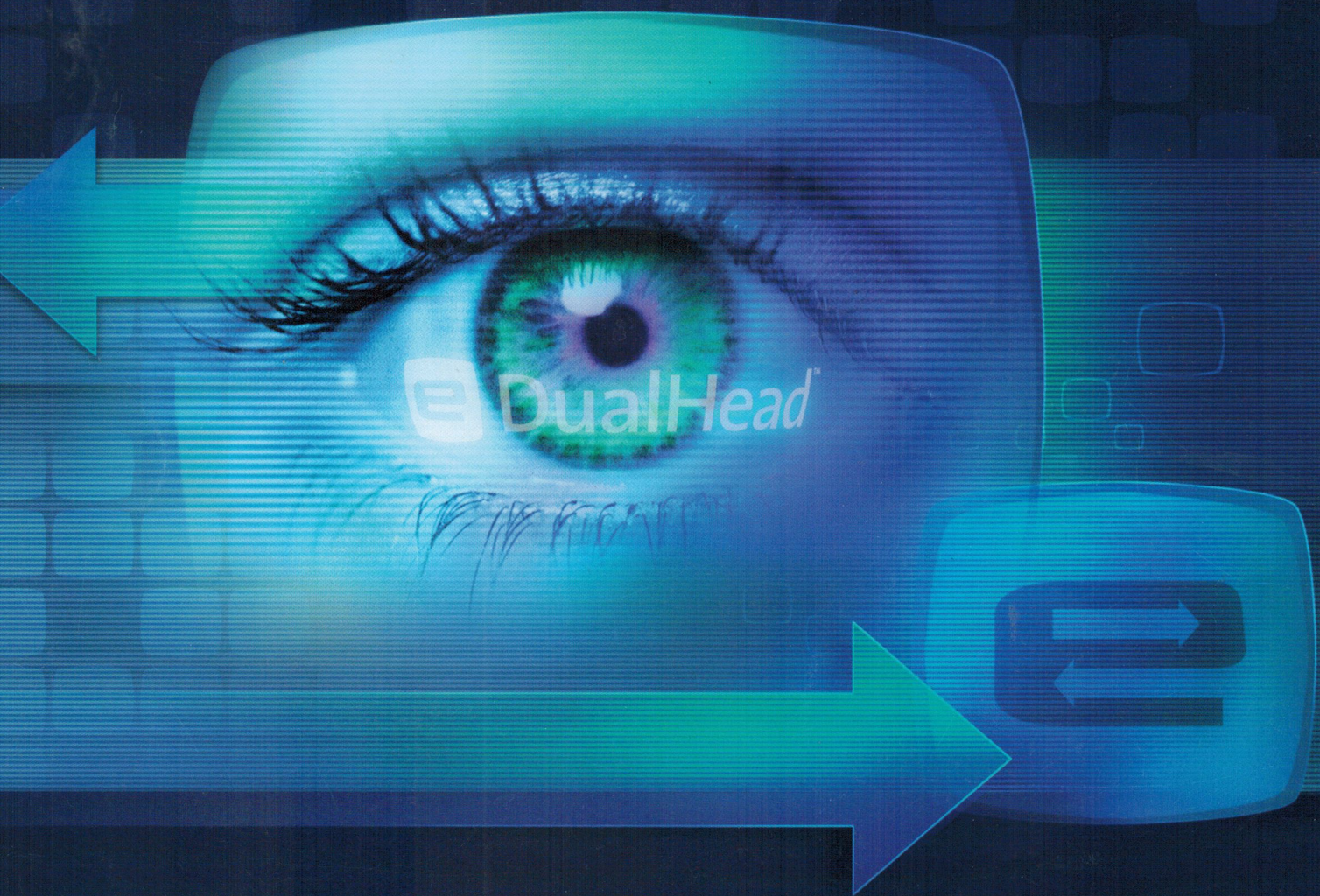




DualHead™



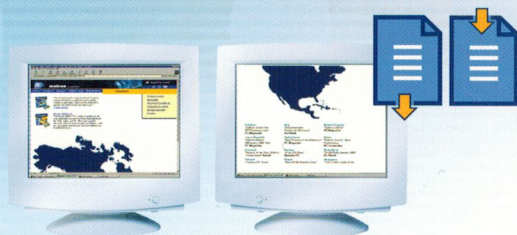
See more. Do more. **Online.**

- A suite of three powerful browser enhancements for e-business and the Web
- True multi-display support under Microsoft® Windows® 2000
- Enhancements to existing DualHead® modes

matrox
www.matrox.com/mga/edualhead

A whole new way to work on the Web

First came DualHead®, which forever changed the way you work and play on your PC. Now, Matrox introduces a host of new DualHead features and enhancements including eDualHead—designed to make Web browsing easier, faster, and more intuitive.



eDualHead™ PageWrap

Information doesn't fit onto one screen? PageWrap automatically wraps a page to additional browser windows on one or more secondary displays. Make full use of your DualHead Multi-Display desktop by viewing lengthy texts, such as news stories or product descriptions, in virtual column format. With PageWrap, you spend more time reading and less time scrolling.



eDualHead™ PageLog

PageLog tracks every page you visit and lets you save individual paths for future reference. Go directly to any page within a saved path without repeatedly hitting the back button. Unlike other logging features available in today's Web browsers, PageLog is not restricted to the browser window and can therefore be positioned anywhere on your DualHead Multi-Display desktop. Additionally, PageLog tracks pages within each browser separately and lets you edit, save, and load each path.



eDualHead™ PageJump

With PageJump, browser windows work in tandem to improve navigation through any Web site. PageJump offers added flexibility and minimizes the effect of long download times on slow Internet connections by letting you view information on one browser while new information loads on another browser. PageJump is extremely useful when searching through multiple sub-links from a main index page, a common practice on news and e-commerce sites.



eDualHead™ for e-commerce

What's better than shopping on-line using two monitors? eDualHead enhancements make browsing easier and even more enjoyable.

Anyone who's ever searched in vain for that great site they once stumbled upon can appreciate the value of PageLog.

- ▶ Better than intuition, **PageLog** knows exactly where users have been and how they got there. In addition, PageLog lets on-line consumers save any path they create for future reference.

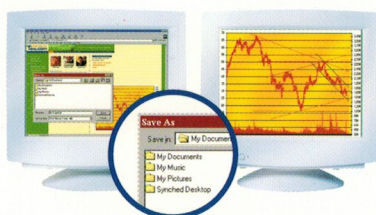
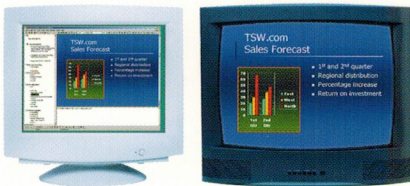
- ▶ **PageWrap** is a clever shortcut for reading multi-page product descriptions. Information that exceeds a single window is automatically wrapped to the next screen, allowing purchasers to digest information about products and pricing quickly and easily.

- ▶ **PageJump** is great for browsing virtual stores. Consumers can use one browser window to view an entire list of products while they read individual product descriptions on the second browser. With this information available on two browser windows simultaneously, there's no need to hit the back button to select another product description from the list.

More new DualHead[®] features...

New for Windows 2000

Now, the Matrox G400 and G450 series support independent resolutions and color depths under Windows[®] 2000. This makes Matrox the first and only company to offer true multi-display support with a single-chip solution under Windows[®] 2000.



Concurrent modes

Full support for concurrent modes lets you switch between all DualHead modes and access eDualHead without having to restart your system. Assign hot keys to alternate between modes quickly and easily.

Matrox Multi-Desktop (MMD)

Configure multiple desktops to improve efficiency and maintain a clutter-free, organized workspace. Assign various applications to different desktops, and use hot keys to switch from one desktop to another. Save presets once, and Matrox MMD will recall them every time you open a desktop.

Multi-Zoom

Define multiple zoom regions when using DualHead Zoom mode, and assign hot keys to toggle between the selected zoom regions.

Flexible DVD playback

In addition to the current ability to view DVD movies on a TV, now you can use a monitor as the second display when playing DVDs in DualHead DVDMax mode.

High-resolution TV-output support

Only Matrox DualHead supports TV output at desktop resolutions of up to 1600 x 1200—a real-world advantage for achieving the sharpest text and visuals on your primary display, even when outputting to a TV.

Snapshot

Select any area of the desktop and capture it to the clipboard or to a file. Take snapshots of your work, such as tables or graphs, and paste them into other applications or easily share them with co-workers via e-mail.

Product support

New DualHead® features, including eDualHead™, are available* exclusively through Matrox on the following DualHead-capable graphics cards:



Matrox Millennium G450
See more. Do more.



Matrox Marvel G450 eTV
The total entertainment solution.

Also available on: DualHead-capable Millennium G400, Millennium G400 MAX, Marvel G400-TV, Matrox G200 MMS, and Productiva G100 Multi-Monitor.

*eDualHead is available as a free download to users who have registered any of the above Matrox products. An eDualHead CD is also available for purchase at www.shopmatrox.com. Availability of eDualHead on bulk and OEM SKUs will differ.

The evolution of Matrox DualHead features

1st-generation DualHead (1999)

- **Multi-Display:** view multiple applications simultaneously on two displays
- **Zoom:** select any region of the primary display and view it full-screen on the second display
- **Clone:** copy the desktop on a second display
- **DVDMax:** output DVDs full-screen to a TV without disrupting the primary desktop
- **TV output:** use a TV as the second display with independent resolutions and refresh rates

2nd-generation DualHead (2000)

- **Concurrent Zoom:** access zoom without rebooting to change modes
- **Multi-Zoom:** select multiple regions of the desktop and view them full-screen consecutively
- **Matrox MultiDesk:** assign applications to different desktops for efficient desktop functionality
- **Snapshot:** instantly capture and save screenshots of user-defined areas on the desktop
- **Enhanced DVD playback:** output DVDs full-screen to a TV or a monitor

3rd-generation DualHead (2001)

- **Concurrent modes:** full support for accessing all modes without rebooting
- **eDualHead:** view and manage information on the Web more efficiently
- **True multi-display support** under Windows® 2000

Plus: a simpler interface for DualHead controls; new options to divide graphics memory and bandwidth between displays; and more convenience through additional, user-defined shortcuts.

For more information about Matrox DualHead® or eDualHead™, visit the Matrox Graphics Web site at www.matrox.com/mga.

Matrox eDualHead software requires Microsoft® Internet Explorer 5.5 or later and one of the following operating systems: Windows 2000 / Me / NT / 98.

Matrox Graphics Inc. 1025 St-Regis Blvd. Dorval, Québec, Canada H9P 2T4 Tel: (514) 822-6320 Fax: (514) 822-6363 In Québec, call: (514) 822-6330 or 1-800-660-1969
Matrox reserves the right to change specifications without notice. Features are for retail products unless otherwise noted. All trademarks and trade names are the property of their respective owners.

SGE-5160-B, rev1
February 23, 2001