

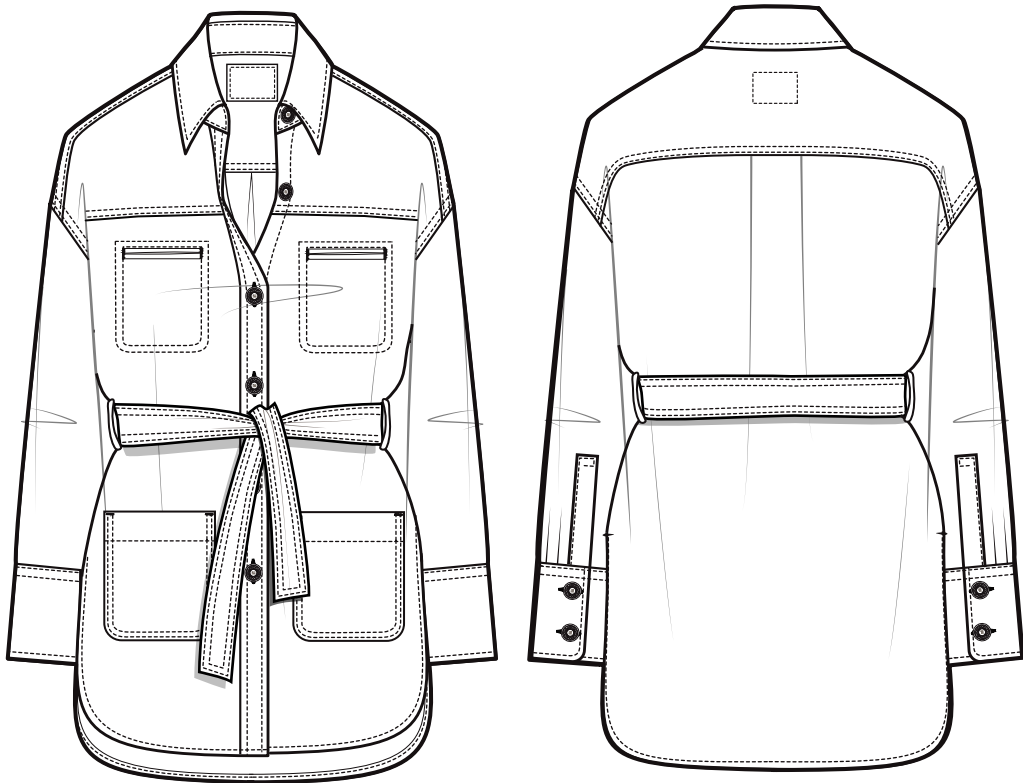
BR

Technical Design Work
2018-2023

STYLE NUMBER: D16183

STYLE DESCRIPTION: WESTWARD BELTED DENIM JACKET

TECHNICAL DESIGNER: STEPHENNIE FACTOR



STYLE NUMBER: D16183
 STYLE DESCRIPTION: WESTWARD BELTED DENIM JACKET
 TECHNICAL DESIGNER: STEPHENNIE FACTOR



CONSTRUCTION CALLOUTS



ALL TOPSTITCH, D/N TOPSTITCH, 1/4" GAUGE, 1/8" MARGIN (UNLESS OTHERWISE NOTED)
 UNLINED GARMENT
 ALL INTERIOR SEAMS CLEAN FINISHED
 ARMHOLE & FRONT YOKE SEAM - FINISHED w/ FLAT FELLED SEAM
 CLEAN FINISHED THROUGHOUT GARMENT - AVOID OVERLOCK WHERE POSSIBLE

STYLE SUMMARY:

FIT INTENT:	FIT INTENT: OVERSIZED. START FROM MS 566331 OVERSIZED POPLIN SHIRT, UPDATING AS INDICATED IN TECH PACK. FOLLOW DENIM TAILORING SAMPLE OF THIS STYLE FOR DENIM SHIRT JACKET AESTHETIC.
DETAILS:	WESTERN STITCHING HIP PATCH POCKETS DROPPED SHOULDER OVERSIZED DENIM JACKET WITH WAIST TIE
FABRIC:	CONE FLASHBACK RIGID INDIGO 93% COTTON/7% RECYCLED COTTON (NON-STRETCH)
PLACEMENT:	ENTIRE GARMENT
SIZING:	ALPHA (XXS-XXL)
PACKAGE TYPE:	STANDARD
SHIPPING INSTRUCTIONS:	1ST 2 BUTTONS UNBUTTONED WAIST TIED AT 17.5" WAIST SPEC TIED IN 1 KNOT CUFFS BUTTONED
MSRP:	\$140

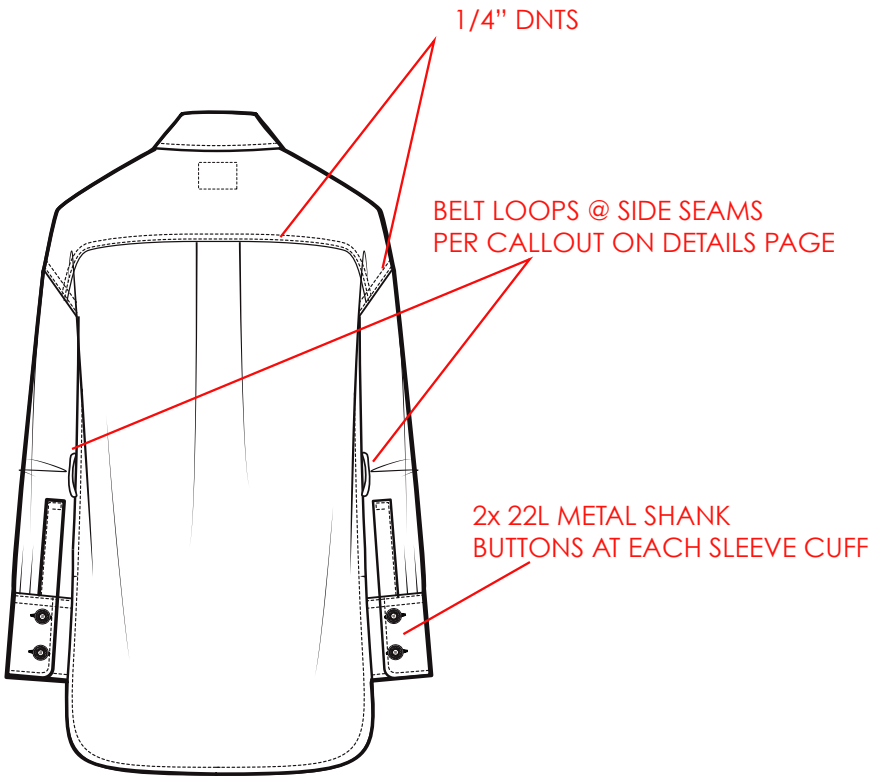
REFERENCE IMAGE(S):



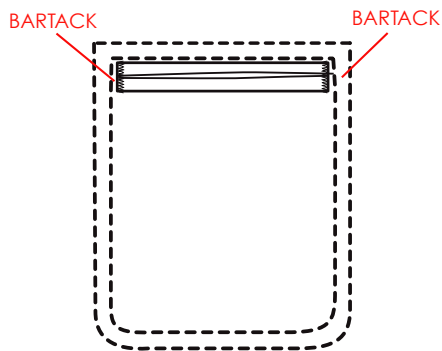
STYLE NUMBER: D16183
 STYLE DESCRIPTION: WESTWARD BELTED DENIM JACKET
 TECHNICAL DESIGNER: STEPHENNIE FACTOR



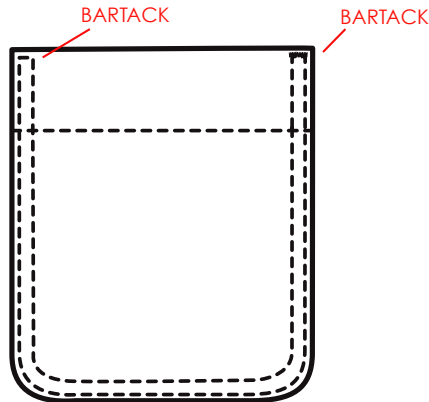
CONSTRUCTION CALLOUTS



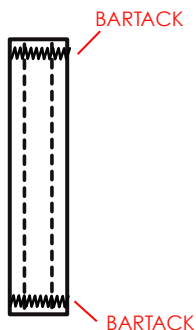
WELT POCKETS w/ STITCH THROUGH: @ CHEST



PATCH POCKETS: @ LOWER FRONT



BELT LOOP DETAILS:



REQUESTED SPEC SUMMARY:

FR BODY LENGTH:	30"
BK BODY LENGTH:	31"
NECK WIDTH:	6.5"
FRONT NECK DROP:	3.75"
BACK NECK DROP:	.625"
COLLAR HT AT CB:	2.25"
COLLAR STAND HT:	1.25"
COLLAR POINT:	2.75"
SHOULDER WIDTH:	19"
SHOULDER SEAM FORWARD:	1.25"
HIGH CHEST:	17"
HIGH BACK:	18"
CHEST 1 BELOW AH:	22"
WAIST 15 FM CB NK:	22.5"
BOTTOM OPENING	23"
SLEEVE LENGTH FM CB:	32.5"
ARMHOLE ALONG CURVE:	10"
BICEP:	7.5"
ELBOW AT 1/2:	6.5"
SLEEVE OPENING	4.5"
SLEEVE CUFF HT:	4"
BELTLOOP PLMT FM CB:	ADVISE
BELTLOOP HT:	2.25"
BELTLOOP WIDTH:	.5"
TIE LENGTH (END TO END):	65"
TIE WIDTH AT END:	1.5"

STYLE NUMBER: D16183

STYLE DESCRIPTION: WESTWARD BELTED DENIM JACKET

TECHNICAL DESIGNER: STEPHENNIE FACTOR



FIT COMMENT FORM:

VENDOR:	WEIHAI INTERNATIONAL	POINT OF MEASURE (POM) - FLAT	SAMPLE:	REVISED:
REVISION:	1ST FIT	FRONT BODY LENGTH (FROM HPS)	30"	30"
MODEL:	JENNIFER	BACK BODY LENGTH (FROM HPS)	30.5"	31"
FIT DATE:	1.22.2023	NECK WIDTH - SEAM TO SEAM	6.25"	6.75"
STATUS:	RESUBMIT	FRONT NECK DROP	3.75"	4"
FIT PHOTO(S):		BACK NECK DROP	.5"	.5"
		COLLAR HEIGHT AT CB	2.25"	2.25"
		COLLAR STAND HEIGHT AT CB	1.25"	1.25"
		COLLAR POINT	2.75"	2.75"
		SHOULDER WIDTH - SEAM TO SEAM	19"	19"
		SHOULDER SEAM FORWARD	1.25"	1.25"
		HIGH CHEST - SEAM TO SEAM @ 5" FROM HPS	16.75"	16.75"
		HIGH BACK - SEAM TO SEAM @ 4.5" FROM CB NK	17.75"	17.75"
		CHEST - 1" FROM ARMOLE	22"	22"
		WAIST - 15" FROM CB	22.5"	22.5"
		BOTTOM OPENING - AT TOP OF SHIRT TAIL	23"	23.375"
		SLEEVE LENGTH FROM CB	32.5"	32.75"
		ARMHOLE ALONG CURVE	10"	10"
		BICEP - 1" BELOW ARMHOLE	7.625"	7.5"
		ELBOW - @ HALF SLEEVE	6.625"	6.5"
		SLEEVE OPENING	4.5"	4.5"
		SLEEVE CUFF HEIGHT	4"	4"
		SLEEVE PLACKET LENGTH	5"	5"
		SLEEVE PLACKET WIDTH	1"	1"
		FRONT YOKE HEIGHT FROM HPS	6.5"	6.5"
		CB YOKE HEIGHT	4.5"	4.5"
BELTLOOP PLACEMENT BELOW ARMHOLE	5"	5.25"		
BELTLOOP HEIGHT	2.25"	2"		
BELTLOOP WIDTH	.5"	.5"		
FIT SUMMARY:		TIE LENGTH - END TO END	64"	64"
Shoulders are sticking out - check shoulder slope angle		TIE WIDTH - AT END	1.5"	1.5"
Fabric is stiff. Garment needs to be washed more - PD to reach out to factory		CHEST POCKET VERTICAL PLACEMENT FM HPS	7"	7"
Neck feels too small - check neck width on form and flat		CHEST POCKET HORIZONAL PLACEMENT FM CF	2.25"	2.25"
Increase bottom opening for more ease		CHEST POCKET WIDTH	5.25"	5.25"
Sleeve has draglines - check sleeve cap height/width		CHEST POCKET HEIGHT	6.25"	6.25"
		HIP POCKET VERTICAL PLACEMENT FROM HPS	20.5"	20.5"
		HIP POCKET HORIZONAL PLACEMENT FM CF	2.5"	2.5"
		HIP POCKET WIDTH	7"	7"
		HIP POCKET HEIGHT	7.5"	7.5"
		CF PLACKET WIDTH	1.375"	1.375"
		1ST BUTTON PLACEMENT FROM NECK SEAM	.625"	.625"
		VERTICAL BUTTON SPACING DISTANCE	4.125"	4.125"
		CB BOX PLEAT WIDTH	2"	2"
		CB BOX PLEAT DEPTH - EACH SIDE	.875"	.875"

STYLE NUMBER: D16183
STYLE DESCRIPTION: WESTWARD BELTED DENIM JACKET
TECHNICAL DESIGNER: STEPHENNIE FACTOR

BR

FIT COMMENT(S):

- Shoulder slope is okay as garment
- Go back to spec on CB body length
- Increase bottom opening +3/8" flat - see updated MC
- We are adopting tie length as sample - spec has been updated
- Increase sleeve cap height +1/8"
- Neck width is small - increase neck width +1/2"
- Lower front neck drop +1/4"
- Lengthen sleeve length +1/4" - see updated specs
- Beltloop placement is too high. Lower beltloops +1/4" - see updated specs
- Reduce beltloop length -1/4" - see updated specs
- Go back to spec on bicep and elbow.
- Follow updated measurement chart and resubmit for 2nd fit

FIT/PATTERN ADJUSTMENT(S):



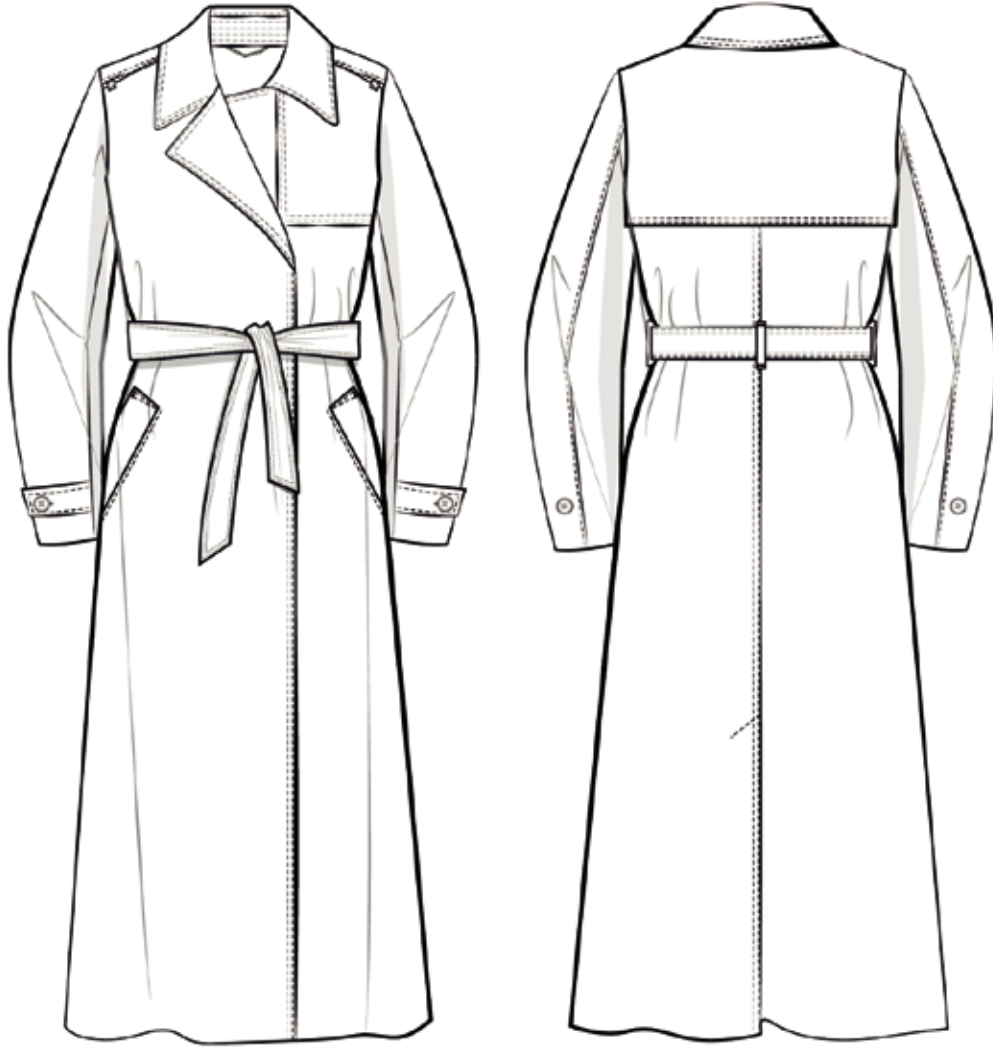
Shoulder slope is good.



STYLE NUMBER: D14292

STYLE DESCRIPTION: SLEEVE TRENCH

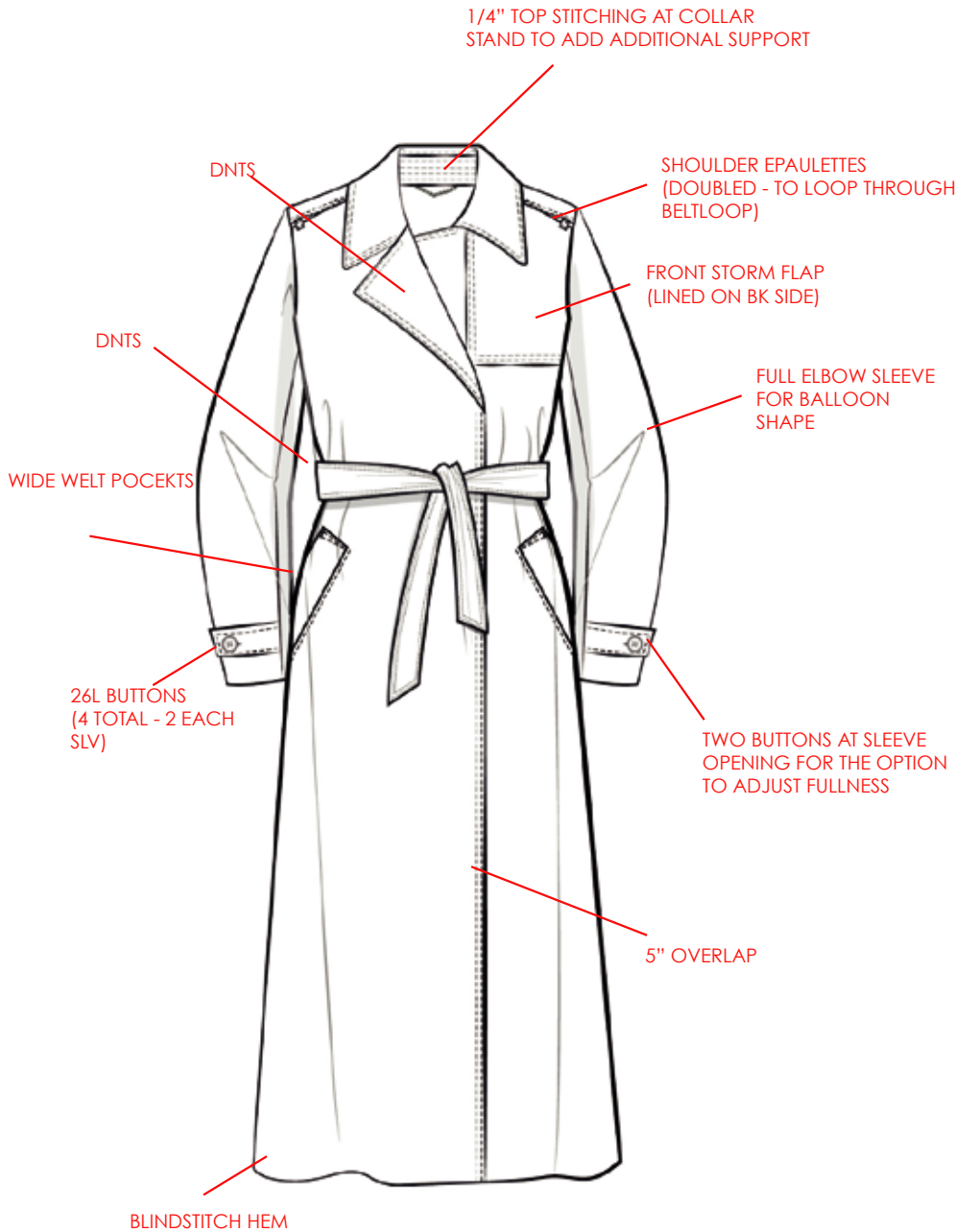
TECHNICAL DESIGNER: STEPHENNIE FACTOR



STYLE NUMBER: D14292
 STYLE DESCRIPTION: SLEEVE TRENCH
 TECHNICAL DESIGNER: STEPHENNIE FACTOR



CONSTRUCTION CALLOUTS



HEM CLEAN FINISHED IN LINING
 "X" TACK AT CB VENT
 DNT STITCHING AT BELT
 ADD BELT TAB TO CENTER OF BELT
 CLEAN FINISH SEAMS THROUGHOUT GARMENT

STYLE SUMMARY:

FIT INTENT:	FIT INTENT: RELAXED MAXI LENGTH EASY FIT
DETAILS:	TIMELESS TRENCH SLIGHTLY BALLOON SLV VOLUME ADJUSTABLE SLV TABS REMOVABLE BELT DNTS THROUGHOUT
FABRIC:	100% FLAX LINEN
PLACEMENT:	MAIN BODY SLEEVES SHOULDER EPAULETTES
SIZING:	ALPHA (XXS-XXL)
PACKAGE TYPE:	STANDARD
SHIPPING INSTRUCTIONS:	WAIST TIE TIED IN KNOT SLV BUTTONED ON 2ND BUTTON EPPAULETTES BUTTONED
MSRP:	\$280

REFERENCE IMAGE(S):



STYLE NUMBER: D14292
 STYLE DESCRIPTION: SLEEVE TRENCH
 TECHNICAL DESIGNER: STEPHENNIE FACTOR



FIT COMMENT FORM:

VENDOR: SG CORP.		POINT OF MEASURE (POM) - FLAT	SAMPLE:	REVISED:
REVISION: 2ND FIT		FRONT BODY LENGTH (FROM HPS)	50.25"	50.5"
MODEL: JENNIFER		BACK BODY LENGTH (FROM CB)	49"	49"
FIT DATE: 1.7.2023		NECK WIDTH - SEAM TO SEAM	6.75"	6.75"
STATUS: RESUBMIT		BACK NECK DROP	.75"	.75"
FIT PHOTO(S):		COLLAR HEIGHT AT CB	4"	4"
		COLLAR STAND HEIGHT AT CB	1.5"	1.5"
		COLLAR POINT	2.125"	2.625"
		LAPEL POINT	2.75"	3.25"
		SHOULDER WIDTH - SEAM TO SEAM	15.5"	15.5"
		SHOULDER SEAM FORWARD	.375"	.375"
		HIGH CHEST - SEAM TO SEAM @ 5" FROM HPS	13.375"	13.375"
		HIGH BACK - SEAM TO SEAM @ 4.5" FROM CB NK	15.5"	15.5"
		CHEST - 1" FROM ARMOLE	19.5"	19.5"
		WAIST - 15" FROM CB	19"	19"
		BOTTOM OPENING - STRAIGHT	26"	26"
		SLEEVE LENGTH FROM CB	32.625"	32.75"
		ARMHOLE CURVE	10"	10"
		BICEP - 1" BELOW ARMHOLE	8"	8"
		ELBOW - @ HALF SLEEVE	8.75"	8.75"
		SLEEVE OPENING	5.875"	5.875"
		SLEEVE CUFF HEIGHT	2"	2"
		SLEEVE BUTTON PLACEMENT	TBD"	TBD"
		DISTANCE BETWEEN SLEEVE BUTTONS	TBD"	TBD"
		FRONT YOKE HEIGHT FROM HPS	12.5"	12.5"
		CB YOKE HEIGHT	11.75"	11.75"
WAIST BELTLOOP PLACEMENT FROM CB	4.75"	4.75"		
WAIST BELTLOOP HEIGHT	2.25"	2.25"		
BELTLOOP WIDTH	.5"	.5"		
TIE LENGTH - END TO END	73"	73"		
TIE WIDTH - AT END	2.5"	2"		
SHOULDER EPAULETTE WIDTH	11.125"	REMOVE		
SHOULDER EPAULETTE LENGTH	1.5"	REMOVE		
SHOULDER BELTLOOP LENGTH	1.75"	REMOVE		
SHOULDER BELTLOOP WIDTH	.5"	REMOVE		
HIP POCKET VERTICAL PLACEMENT FROM HPS	19"	18.5"		
HIP POCKET HORIZONTAL PLACEMENT FM CF	8.25"	8.25"		
HIP WELT POCKET WIDTH	1.75"	1.75"		
HIP WELT POCKET HEIGHT	7"	7"		
OVERLAP AT CF	5.5"	5.5"		
FIT SUMMARY:				
Sleeve button is in the incorrect place				
Reshape collar/lapel				
Reduce belt height to 2"				
Bottom opening has too much fullness				
Clean finish at armhole				
Remove snaps at shoulder and change to 32L buttons				
Add heavier fusible to belt				
Check if garment is hiking				
Grograin locker loop looks too long - double check flat				
Sewing workmanship needs to be improved				

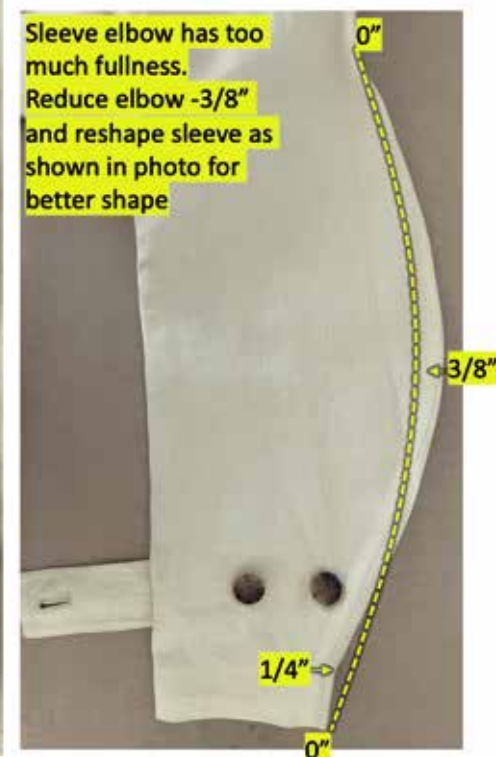
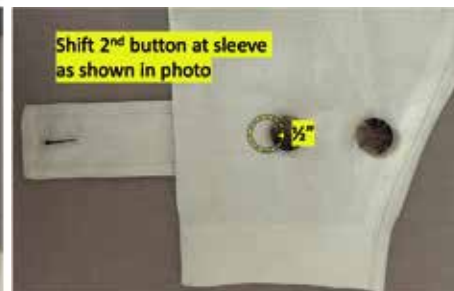
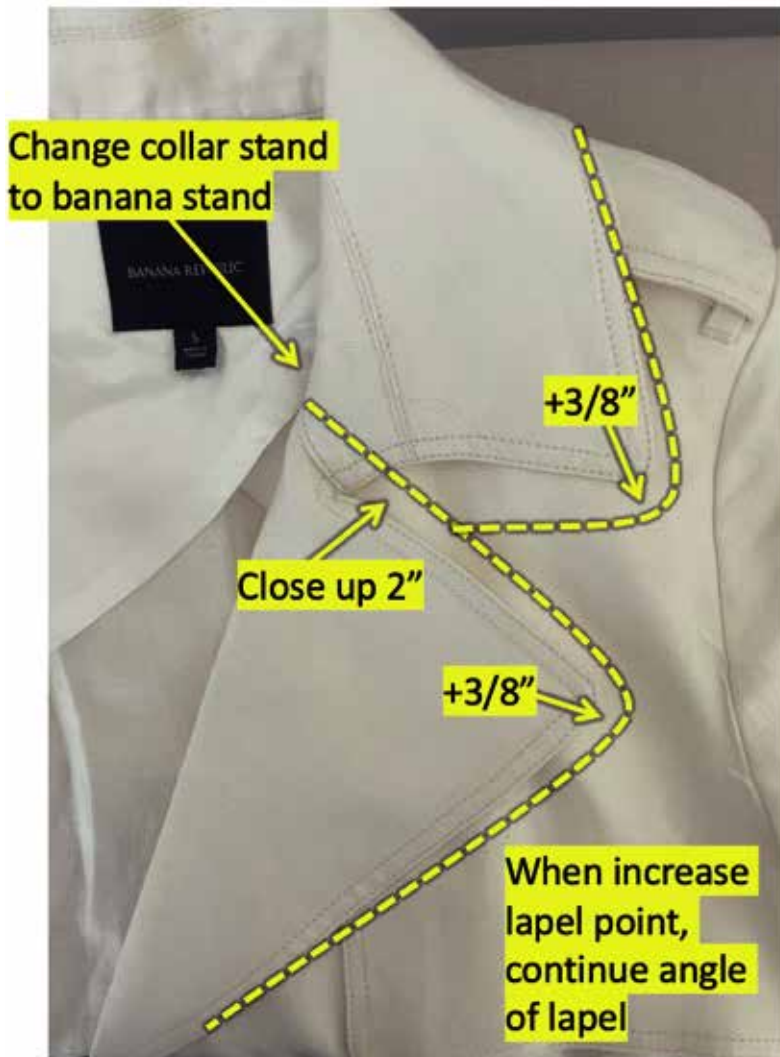
STYLE NUMBER: D14292
STYLE DESCRIPTION: SLEEVE TRENCH
TECHNICAL DESIGNER: STEPHENNIE FACTOR

BR

FIT COMMENT(S):

- Reposition sleeve button at cuff $\frac{1}{2}$ " towards back - see photo below
- Raise sleeve belt position to be $2\frac{3}{4}$ " from edge
- Reshape collar as shown in image below.
- Increase lapel width $+3/8$ " - see updated specs
- Increase collar width $+3/8$ " - see updated specs
- Reduce belt height to 2" - see updated specs
- Balance is okay as sample
- Increase butterfly lining length $+3$ " - see reference image below
- Increase interlining to 260GSM
- Change collar stand to banana stand for collar to lay better
- Bust dark needs more bust projection - adjust dart as shown in photo below.
- Raise hip pockets $1/2$ " - see updated spec
- Remove shoulder epaulettes and beltloops at shoulder
- Please improve overall sewing workmanship - seams are very wavy and hem is uneven
- Resubmit following changes

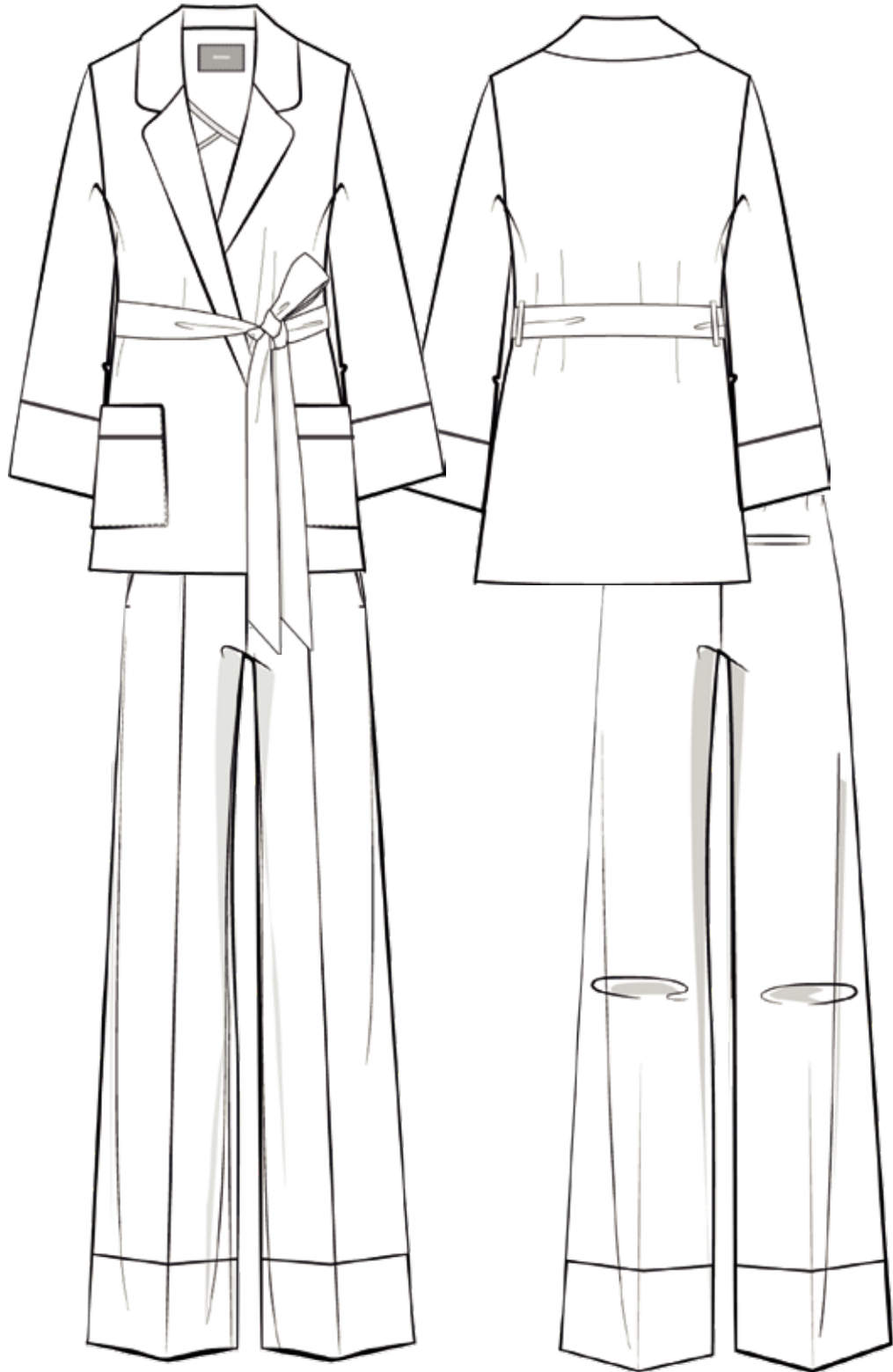
FIT/PATTERN ADJUSTMENT(S):



STYLE NUMBER: D20209

STYLE DESCRIPTION: BELTED ROBE BLAZER

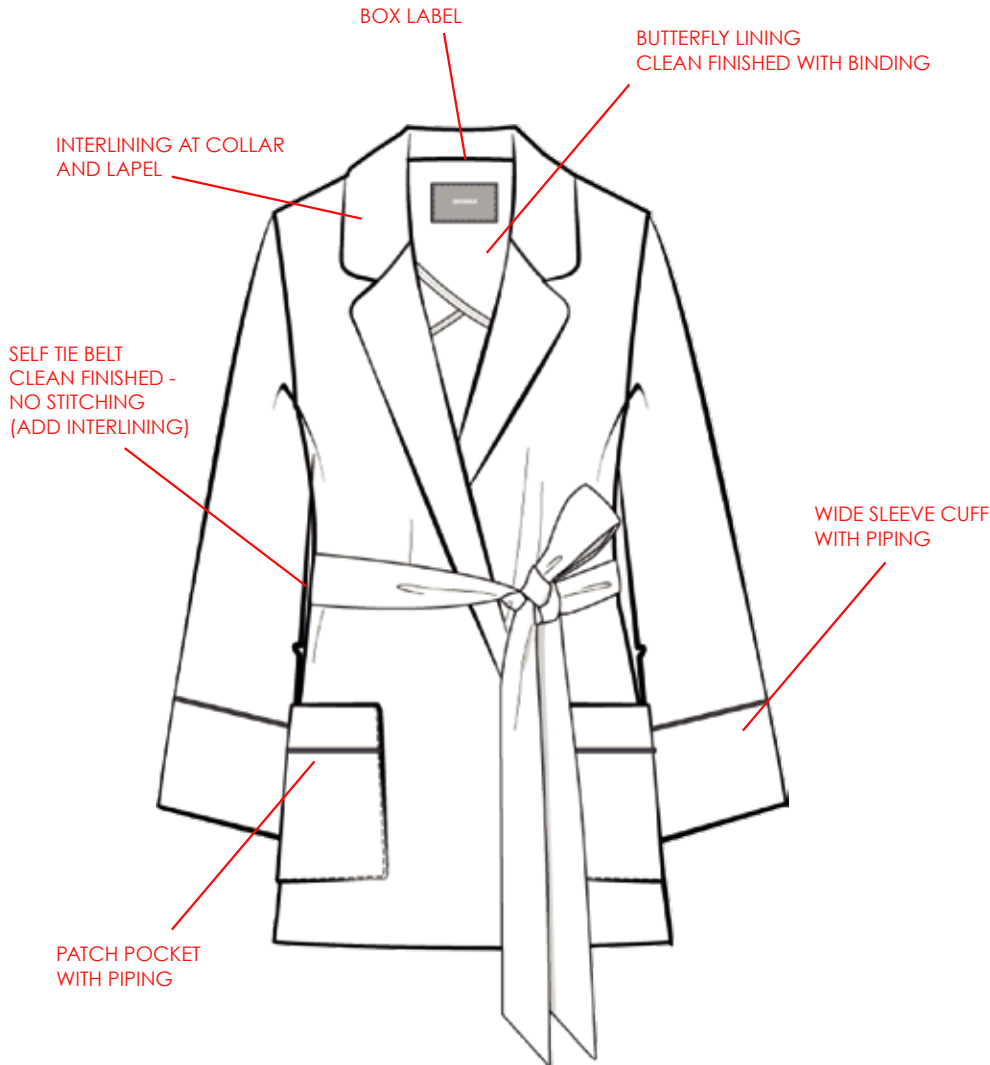
TECHNICAL DESIGNER: STEPHENNIE FACTOR



STYLE NUMBER: D20209
STYLE DESCRIPTION: BELTED ROBE BLAZER
TECHNICAL DESIGNER: STEPHENNIE FACTOR

BR

CONSTRUCTION CALLOUTS



BLIND STITCH AT HEMS
UNLINED GARMENT - BUTTERFLY LINING
ALL INTERIOR SEAMS CLEAN FINISHED WITH BINDING
TONAL PIPING ALONG CUFF AND POCKET FACING
INTERLINING IN BELT, POCKET FACING, SLEEVE CUFF, COLLAR, COLLAR STAND, LAPEL, CF EDGE

STYLE SUMMARY:

FIT INTENT:	FIT INTENT: RELAXED LOW HIP LENGTH ADJUSTABLE OVERLAP
DETAILS:	DECONSTRUCTED BLAZER BUTTERFLY LINING CLEAN FINISHED WITH SELF BINDING PIPING AT SLV CUFFS AND POCKET FACINGS
FABRIC:	100% SILK
PLACEMENT:	ENTIRE GARMENT
SIZING:	ALPHA (XXS-XXL)
PACKAGE TYPE:	STANDARD
SHIPPING INSTRUCTIONS:	WAIST TIED IN KNOT
MSRP:	\$250

REFERENCE IMAGE(S):

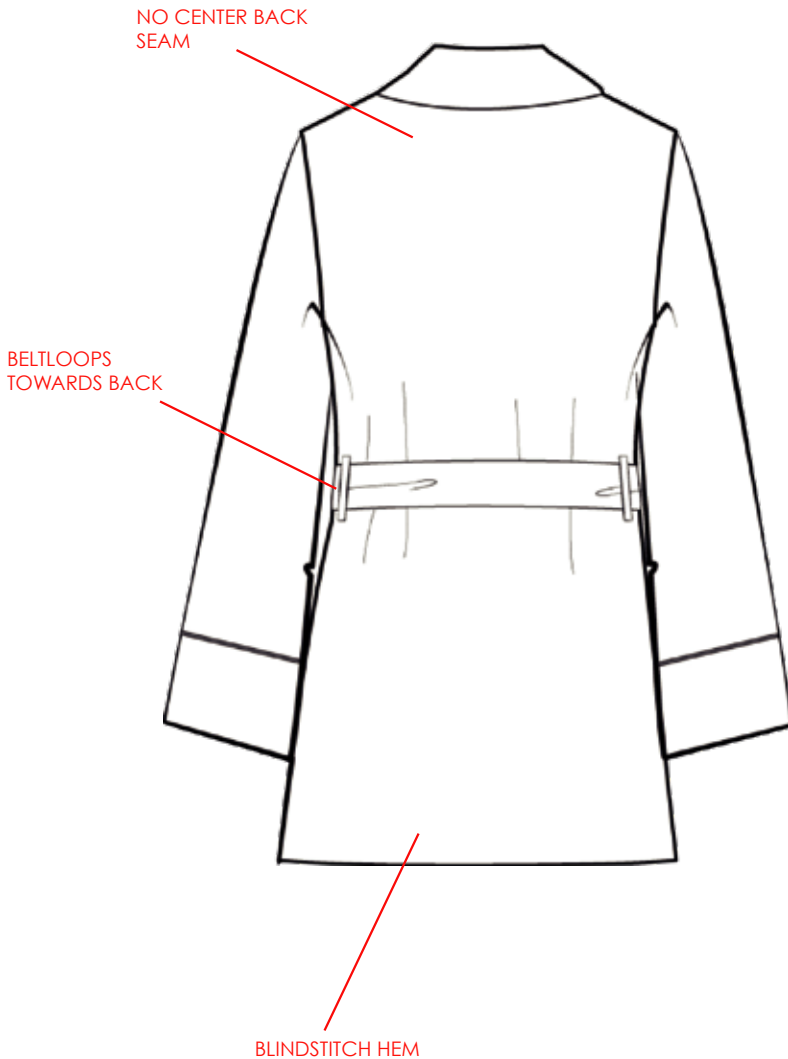


STYLE NUMBER: D20209
 STYLE DESCRIPTION: BELTED ROBE BLAZER
 TECHNICAL DESIGNER: STEPHENNIE FACTOR



CONSTRUCTION CALLOUTS

REQUESTED SPEC SUMMARY:



FR BODY LENGTH:	31"
BK BODY LENGTH:	28"
NECK WIDTH:	6.5"
FRONT NECK DROP:	N/A
BACK NECK DROP:	.625"
COLLAR HT AT CB:	2.75"
COLLAR STAND HT:	N/A
COLLAR POINT:	1.625
SHOULDER WIDTH:	16.5"
SHOULDER SEAM FORWARD:	.375"
SHOULDER SLOPE	1.625"
HIGH CHEST:	14"
HIGH BACK:	15.5"
CHEST 1 BELOW AH:	20.25"
WAIST 15 FM CB NK:	20"
BOTTOM OPENING	23"
SLEEVE LENGTH FM CB:	32.5"
ARMHOLE CURVE:	9.875"
BICEP:	7"
ELBOW AT 1/2:	6"
SLEEVE OPENING	5.5"
BELTLOOP PLMT FM CB:	14"
BELTLOOP HT:	2.625"
BELTLOOP WIDTH:	.375"
TIE LENGTH (END TO END):	68"
TIE WIDTH AT END:	2.5"

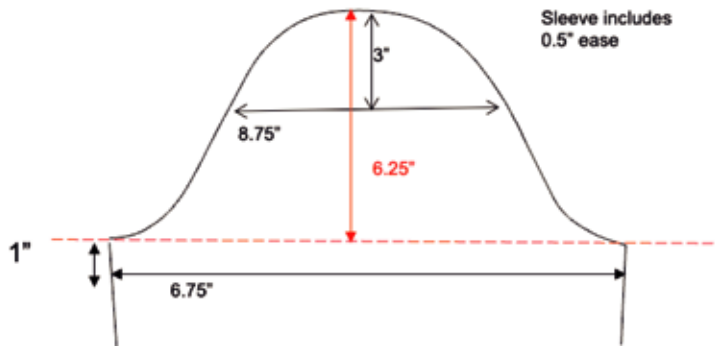
STYLE NUMBER: D20209
STYLE DESCRIPTION: BELTED ROBE BLAZER
TECHNICAL DESIGNER: STEPHENNIE FACTOR

BR

FIT COMMENT(S):

- Shorten sleeve length -1/2" - see updated specs
- Lengthen front body length +1/2" and lengthen CB body lengthen 1" to balance hem
- Armhole is slightly low - raise 1/4"
- Tie length is short - go back to spec on tie length
- Change sleeve cuff interlining to 240 GSM instead of 260 GSM - see updated BOMs in PLM
- Go back to spec on hip pocket placement
- Sleeve cap width is slightly too narrow - adjust sleeve cap as shown in sketch below.
- Correct and proceed to PP sample

FIT/PATTERN ADJUSTMENT(S):



STYLE NUMBER: D34201
STYLE DESCRIPTION: SILK SHIRT DRESS
TECHNICAL DESIGNER: STEPHENNIE FACTOR

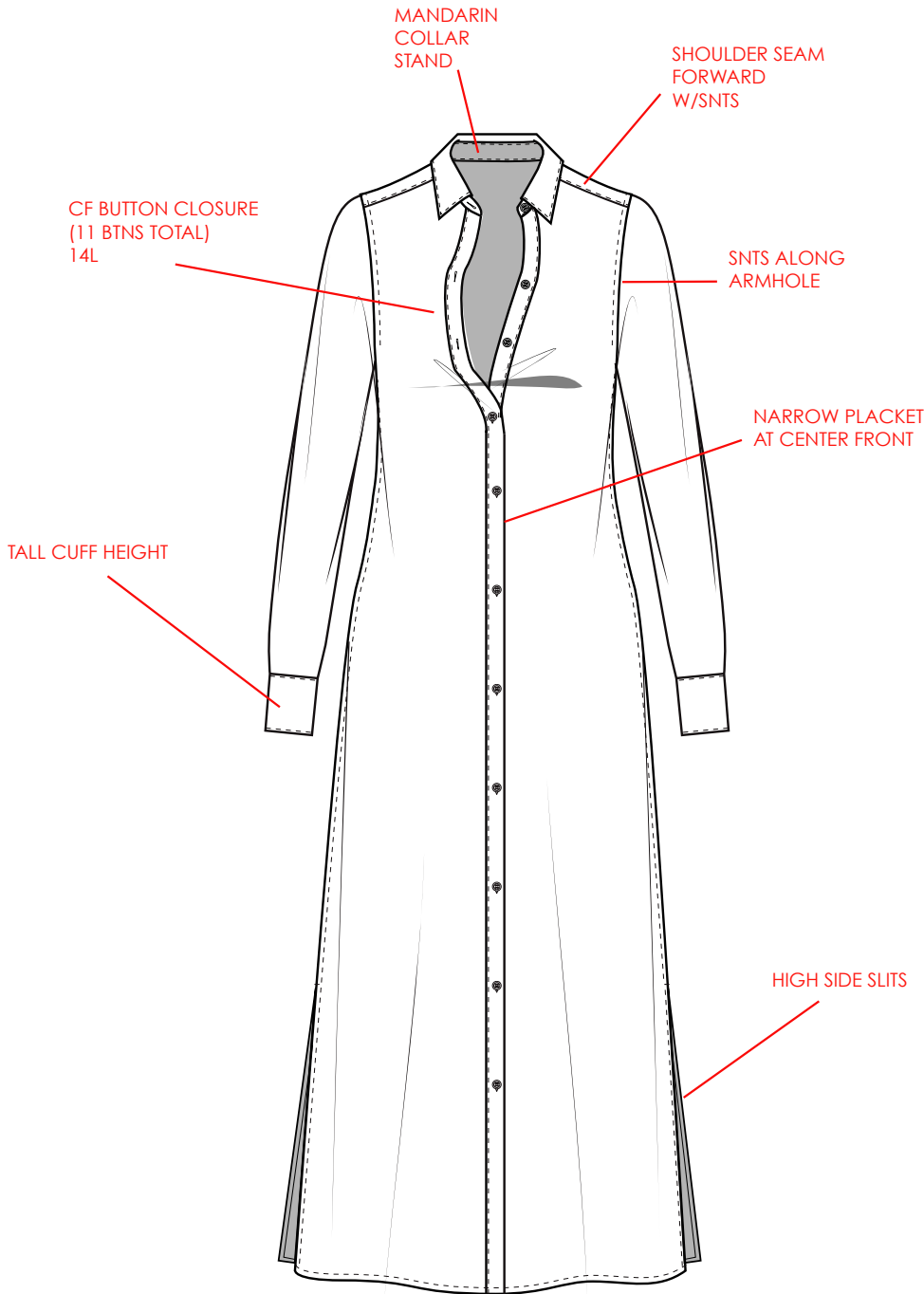


STYLE NUMBER: D34201
 STYLE DESCRIPTION: SILK SHIRT DRESS
 TECHNICAL DESIGNER: STEPHENNIE FACTOR



CONSTRUCTION CALLOUTS

STYLE SUMMARY:



FIT INTENT:

FIT INTENT: RELAXED
 MAXI LENGTH
 STANDARD SLEEVE CIRC.

DETAILS:

SHIRT SILK DRESS

FABRIC:

100% SILK

PLACEMENT:

FRONT BODY
 BACK BODY
 SLEEVES

SIZING:

ALPHA
 (XXS-XXL)

PACKAGE TYPE:

STANDARD

SHIPPING INSTRUCTIONS:

SHIP WITH 1ST 2 BUTTONS
 UNBUTTONED

MSRP:

\$270

REFERENCE IMAGE(S):



REGULAR SLEEVE LENGTH

HIGH SIDE SLITS - 2" ABOVE KNEE

ADD INTERLINING TO PLACKET, SLEEVE CUFFS, COLLAR, COLLAR STAND

CLEAN FINISH ALL INTERIOR SEAMS

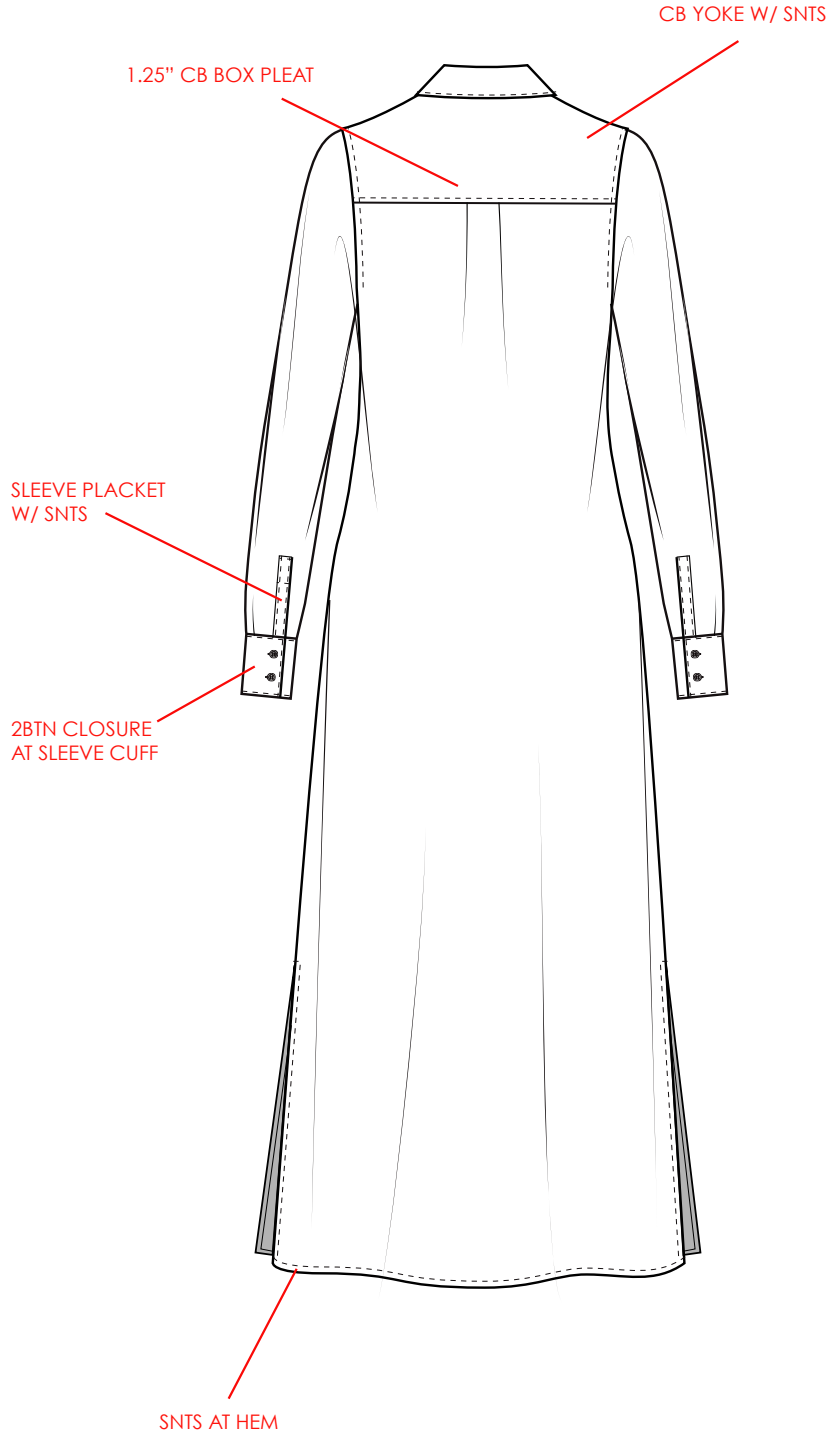
LONGEST MAXI LENGTH POSSIBLE

SEND PROTO WITH SELF TIE FOR OUR REVIEW - ADD THREAD LOOPS AT SIDE

STYLE NUMBER: D34201
 STYLE DESCRIPTION: SILK SHIRT DRESS
 TECHNICAL DESIGNER: STEPHENNIE FACTOR



CONSTRUCTION CALLOUTS



REQUESTED SPEC SUMMARY:

FR BODY LENGTH:	55"
BK BODY LENGTH:	55.5"
NECK WIDTH:	6.5"
FRONT NECK DROP:	3.5
BACK NECK DROP:	.5"
COLLAR HT AT CB:	2.25"
COLLAR STAND HT:	1.5"
COLLAR POINT:	3"
SHOULDER WIDTH:	20"
SHOULDER SEAM FORWARD:	.375"
SHOULDER SLOPE	2"
HIGH CHEST:	18"
HIGH BACK:	19"
CHEST 1 BELOW AH:	20.5"
WAIST 15 FM CB NK:	20"
BOTTOM OPENING	21.5"
SLEEVE LENGTH FM CB:	32.5"
ARMHOLE CURVE:	8.5"
BICEP:	7"
ELBOW AT 1/2:	6"
SLEEVE OPENING	4.25"
BELTLOOP PLMT FM AH:	ADVISE
TIE LENGTH (END TO END):	70"
TIE WIDTH AT END:	2"

STYLE NUMBER: D34201
 STYLE DESCRIPTION: SILK SHIRT DRESS
 TECHNICAL DESIGNER: STEPHENNIE FACTOR



FIT COMMENT FORM:

VENDOR:	HENSEN INTL.	POINT OF MEASURE (POM) - FLAT	SAMPLE:	REVISED:
REVISION:	1ST FIT	FRONT BODY LENGTH (FROM HPS)	54.75"	55"
MODEL:	FORM	BACK BODY LENGTH (FROM HPS)	56.5"	56.5"
FIT DATE:	3.19.2023	NECK WIDTH - SEAM TO SEAM	6.125"	6.5"
STATUS:	RESUBMIT	FRONT NECK DROP	3.375"	3.625"
FIT PHOTO(S):		BACK NECK DROP	.5"	.5"
		COLLAR HEIGHT AT CB	2.25"	2.25"
		COLLAR STAND HEIGHT	1.5"	1.5"
		COLLAR POINT	3"	3"
		SHOULDER WIDTH - SEAM TO SEAM	20"	20"
		SHOULDER SEAM FORWARD	.375"	.375"
		HIGH CHEST - SEAM TO SEAM @ 6.5" FROM HPS	18"	18"
		HIGH BACK - SEAM TO SEAM @ BACK YOKE	18.875"	19"
		CHEST - 1" FROM ARMOLE	20.5"	20"
		WAIST - 15" FROM CB	20"	20"
		HIP - 24" FROM CB	20.875"	21"
		BOTTOM OPENING - AT TOP OF SLIT	21.5"	21.5"
		HEM HEIGHT	.125"	.125"
		SLEEVE LENGTH FROM CB	32.25"	32.5"
		ARMHOLE ALONG CURVE	8.5"	8.75"
		BICEP - 1" BELOW ARMHOLE	7"	adjust
		ELBOW - @ HALF SLEEVE	5.875"	6"
		SLEEVE OPENING	4.25"	4.25"
		SLEEVE CUFF HEIGHT	4.75"	4.75"
		SLEEVE PLACKET LENGTH	4.5"	4.5"
		SLEEVE PLACKET WIDTH	.75"	.75"
		TIE LENGTH - END TO END	69"	70"
		TIE WIDTH - AT END	2"	2"
		THREAD LOOP PLACEMENT FROM ARMHOLE	6.25"	6"
CF PLACKET WIDTH	1.5"	1.5"		
1ST BUTTON PLACEMENT FROM NK SM	.625"	.625"		
VERTICAL BUTTON SPACING	3.5"	3.5"		
SLIT LENGTH - MEASURED AT BACK	21"	21"		
CB BOX PLEAT WIDTH	2"	2"		
CB BOX PLEAT DEPTH - EACH SIDE	1"	5"		
CB YOKE HEIGHT	5"	5"		
				
FIT SUMMARY: Sleeve has a lot of draglines - clean up at sleeve head Shoulder slope needs to be lowered for dropped shoulder Keeping waist tie options with side thread loops Add heavier fusible at placket Check neck width - Model says neck width feels tight Overall sewing workmanship needs to be improved Check with PD if fabric is passing QC				

STYLE NUMBER: D34201
STYLE DESCRIPTION: SILK SHIRT DRESS
TECHNICAL DESIGNER: STEPHENNIE FACTOR

BR

FIT COMMENT(S):

- Shoulder is sticking away, lower shoulder slope $1/4''$ for dropped shoulder - see image below
- Sleeve head has a lot of ease - reduce sleeve cap width $-3/8''$. After, adjust bicep - see photo below and follow updated specs
- Armhole is too high - lower armhole $1/4''$
- Neck width is too small. Increase neck width $3/8''$ and lower front neck drop $1/4''$ - see photo below and follow updated measurement chart
- Increase sleeve elbow $+1/8''$ - see updated specs
- We are keeping back body length as per sample - go back to spec on front body length
- We decided to keep self waist tie - please see reference image for shipping instructions
- Reduce chest width $-1/2''$ flat - see updated MC
- Sleeve length is short - lengthen $+1/4''$
- Follow updated MC
- Improve overall sewing workmanship and resubmit for 2nd fit sample

FIT/PATTERN ADJUSTMENT(S):



Neck width is too small
Increase neck width $3/16''$ each
side ($3/8''$ total)
And lower front neck drop $1/4''$
Adjust collar and collar stand
Add heavier interlining to placket
to avoid collapsing at 1st button



STYLE NUMBER: D342058

STYLE DESCRIPTION: SILK SLIP DRESS W/SLITS

TECHNICAL DESIGNER: STEPHENNIE FACTOR



STYLE NUMBER: D342058
STYLE DESCRIPTION: SILK SLIP DRESS W/SLITS
TECHNICAL DESIGNER: STEPHENNIE FACTOR



CONSTRUCTION CALLOUTS



1/8" SNTS THROUGHOUT
UNLINED GARMENT
ALL INTERIOR SEAMS CLEAN FINISHED
ADJUSTABLE STRAPS
STANDARD HANGER TAPE

STYLE SUMMARY:

FIT INTENT:	EASY FIT MAXI LENGTH
DETAILS:	ALL OVER PRINT SILK SLIP DRESS HIGH SIDE SLITS ADJUSTABLE STRAPS
FABRIC:	100% SILK
PLACEMENT:	FRONT BODY BACK BODY SHOULDER STRAPS
SIZING:	ALPHA (XXS-XXL)
PACKAGE TYPE:	STANDARD
SHIPPING INSTRUCTIONS:	WAIST TIED IN KNOT
MSRP:	\$220

REFERENCE IMAGE(S):

STYLE NUMBER: D342058
STYLE DESCRIPTION: SILK SLIP DRESS W/SLITS
TECHNICAL DESIGNER: STEPHENNIE FACTOR

BR

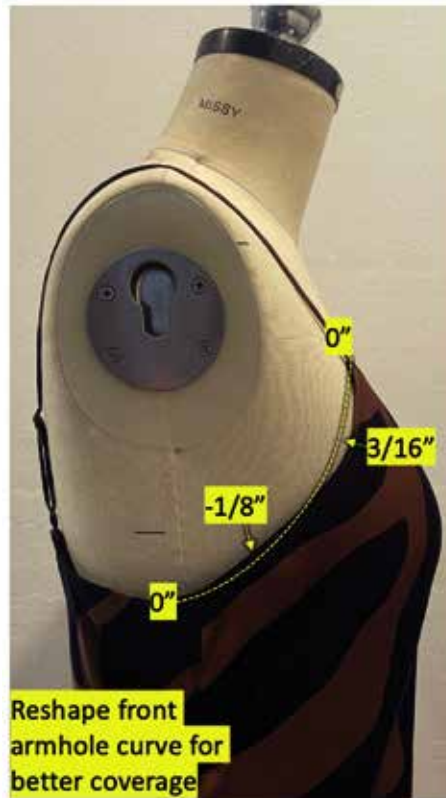
FIT COMMENT(S):

- Raise front neck drop -3/8"
- Strap length is too long - shorten strap length -1/2"
- Reshape front armhole curve for better coverage - see photo below
- Back strap distance is too far apart - reduce distance 1/4" each side (1/2" total)
- Side slit seam tension is too tight causing the sides to pick up when on form - please adjust tension
- Follow updated measurement chart and resubmit for 2nd fit

FIT/PATTERN ADJUSTMENT(S):



Tension at side slits is too tight. Please adjust tension and improve overall sewing workmanship



Reshape front armhole curve for better coverage



Back straps are too far apart. Reduce distance 1/4" each side (1/2" total)



Front neck drop is too low. Raise 3/8" at CF and blend to 0" at strap point