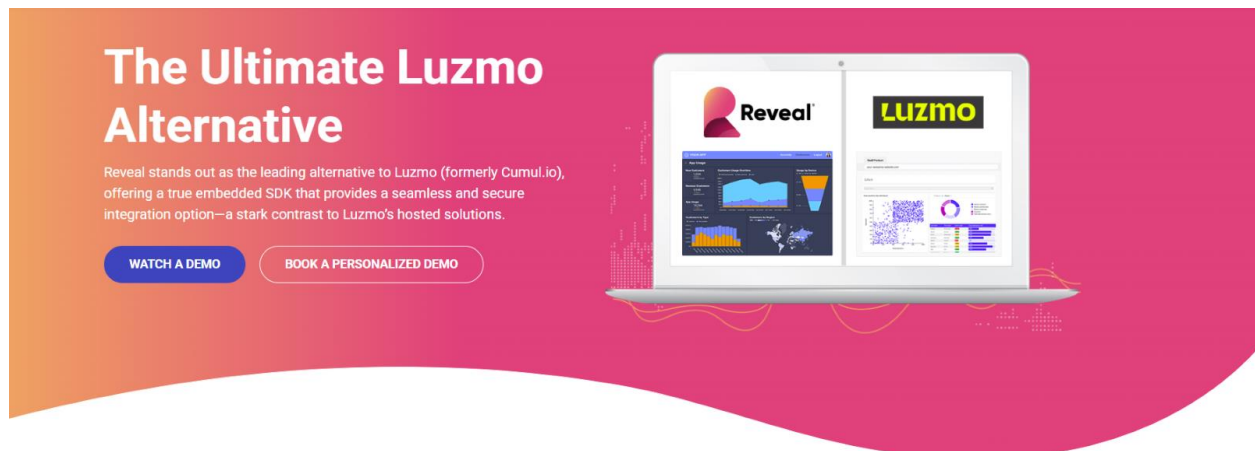


## Hero

The hero banner features a gradient background transitioning from orange on the left to magenta on the right. On the left, the text 'The Ultimate Luzmo Alternative' is displayed in white. Below it, a paragraph explains that Reveal is a leading alternative to Luzmo (formerly Cumul.io) due to its embedded SDK. Two buttons, 'WATCH A DEMO' and 'BOOK A PERSONALIZED DEMO', are positioned below the text. On the right, a laptop displays the Reveal interface on its left screen and the Luzmo interface on its right screen. The laptop is surrounded by faint, stylized digital wave patterns.

### The Ultimate Luzmo Alternative

Reveal stands out as the leading alternative to Luzmo (formerly Cumul.io), offering a true embedded SDK that provides a seamless and secure integration option—a stark contrast to Luzmo's hosted solutions.

[WATCH A DEMO](#) [BOOK A PERSONALIZED DEMO](#)

**Headlines:** Escape Luzmo's Usage Limits with Fixed Pricing

## Paragraph:

1. **Need more powerful, flexible embedded analytics?** Reveal is the ultimate **Luzmo alternative** with **predictive analytics, AI-optimized insights, seamless navigation, full white-labeling, and high-performance data handling**. Scale effortlessly, customize without restrictions, and give users deeper insights—without Luzmo’s limited features, or per-user fees. **Go live 10X faster with Reveal's more powerful, fully embedded BI solution.**

Reveal vs. Luzmo

	Reveal	Luzmo (Cumulio)
Embedded Creator Experience	Native clients for Desktop and Web	×
Embed / API Creator Experience	✓	×
Native SDK Solution	✓	×
Maintenance Costs	Simple Fixed Price	Complex
Predictable, No Capacity-Based Pricing	✓	×
No Dedicated Server Required	✓	×
Custom License Options	✓	✓

## H2: Reveal vs. Luzmo

### Paragraph:

Luzmo can handle basic reporting, but its limitations create roadblocks as companies scale. **Reveal is the unlimited & advanced Luzmo alternative—with richer features, deeper analytics, superior performance with large datasets, and built to scale without per-user fees or capacity limits—all at one fixed price.**

### Table

	Reveal	Luzmo (Cumul.io)
Embedded Creator Experience	Native clients for Desktop and Web	✗
Embed / API Creator Experience	✓	✗
Native SDK Solution	✓	✗
Maintenance Costs	Simple Fixed Price	Complex
Predictable, No Capacity-Based Pricing	✓	✗
No Dedicated Server Required	✓	✗
Custom License Options	✓	✓

## Developer Notes: Changes in the Table

Embedded Creator Experience --> No Changes

Embed / API Creator Experience

Reveal --> No Change

Luzmo --> Becomes a check mark

- Information --> <https://developer.cumul.io/>

Native SDK Solution --> No Change

Maintenance Costs --> No Change

Predictable, No Capacity-Based Pricing --> No Change

No Dedicated Server Required --> No Changes

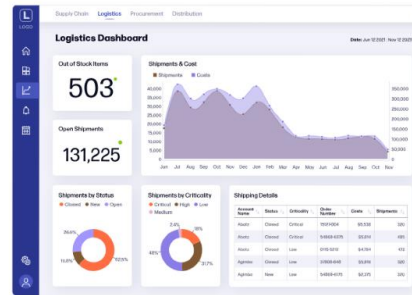
Custom License Options --> No Change

# WHY Section

## Why Reveal?

### The True SDK Experience

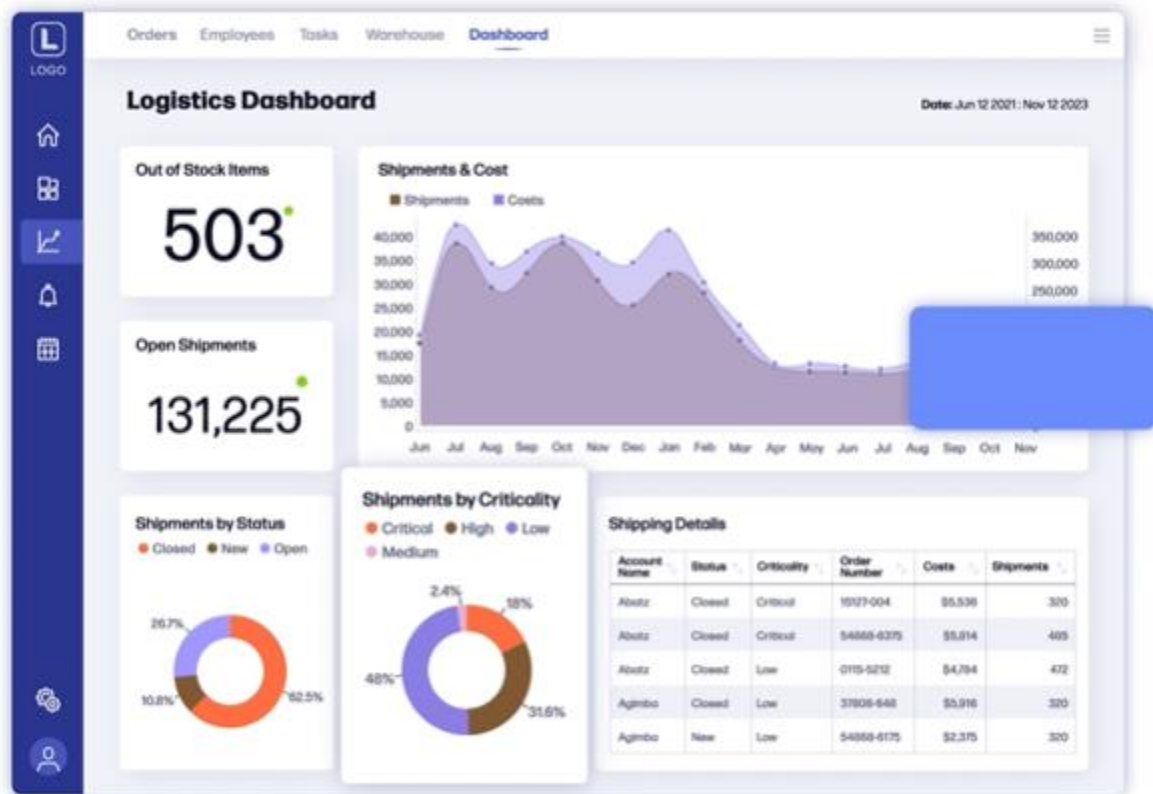
Reveal stands out as the true SDK (Software Development Kit) solution, giving you unmatched customization and deployment flexibility. With Reveal, you're in control, shaping your analytics precisely to match your application. Say goodbye to rigid templates and hello to endless possibilities.



## H2: Why is Reveal Better Than Luzmo

### H2: True SDK Experience

Corresponding visual:

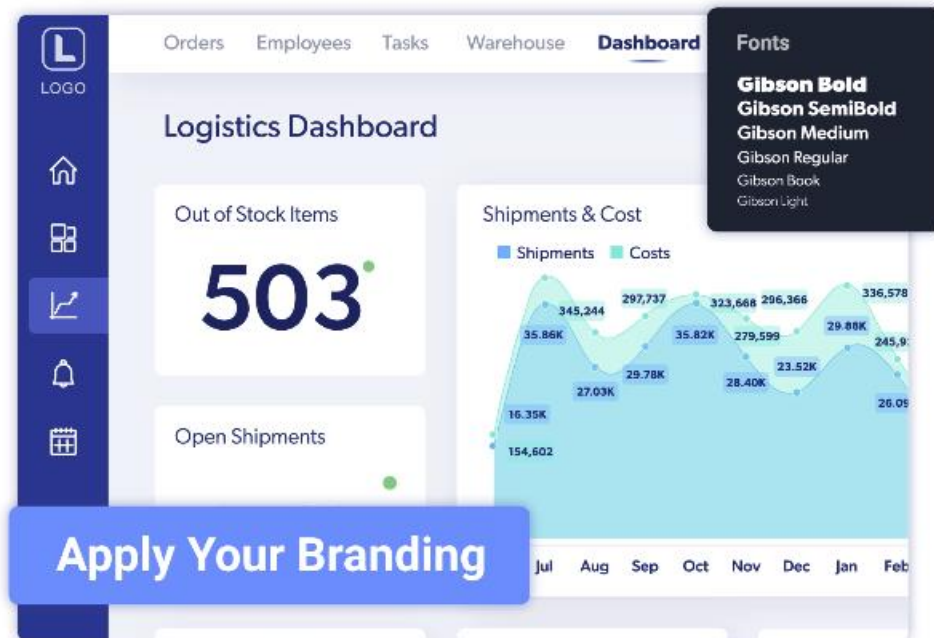


Paragraph:

**Reveal delivers a true SDK experience**—embedded analytics that empowers, not restricts. Unlike Luzmo’s hosted, iFrame-based approach, Reveal integrates analytics directly into your app’s code. Keep full control of your data, user experience, and brand identity without compromises.

## H2: Customization Without Boundaries

Corresponding visual:

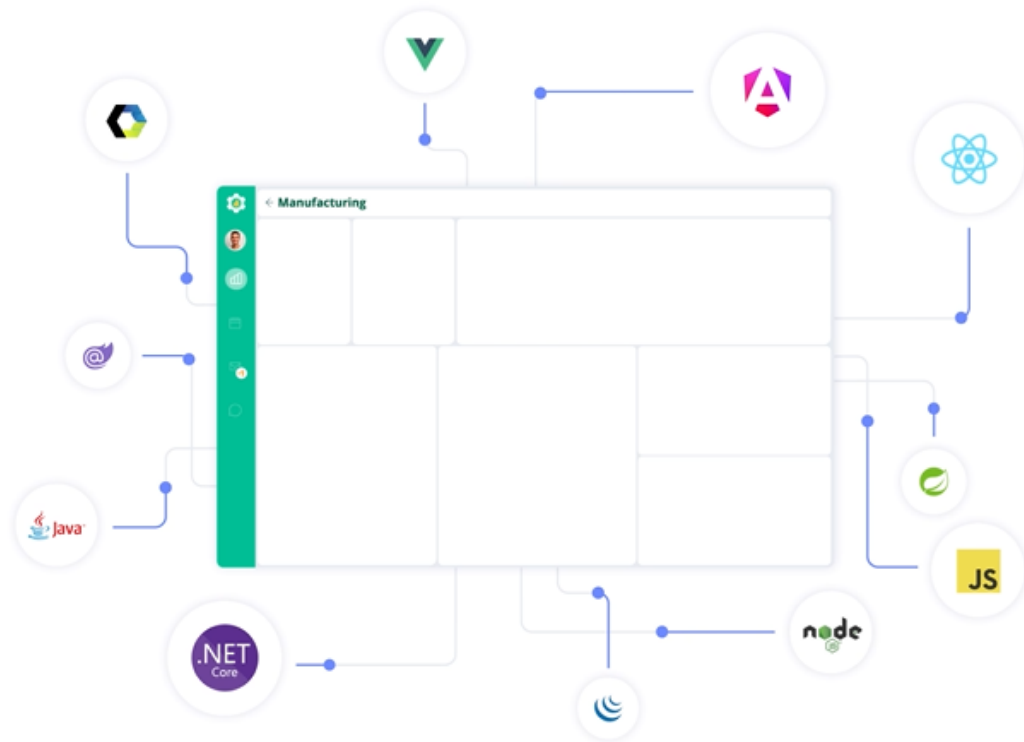


Paragraph:

Your analytics should showcase your brand, not someone else's. Reveal delivers full white-labeling, total CSS customization, and flexible UI components—every dashboard matches your brand perfectly. Forget rigid templates and limited styling; Reveal gives you full control, making embedded analytics look and feel truly native.

## H2: Effortless Performance, Even at Scale

Corresponding visual:



Paragraph:

Big data should enhance your performance, not slow it down. Reveal is built for speed, using real-time queries, data pre-aggregation, and smart caching to keep performance smooth—no matter how complex your datasets are.

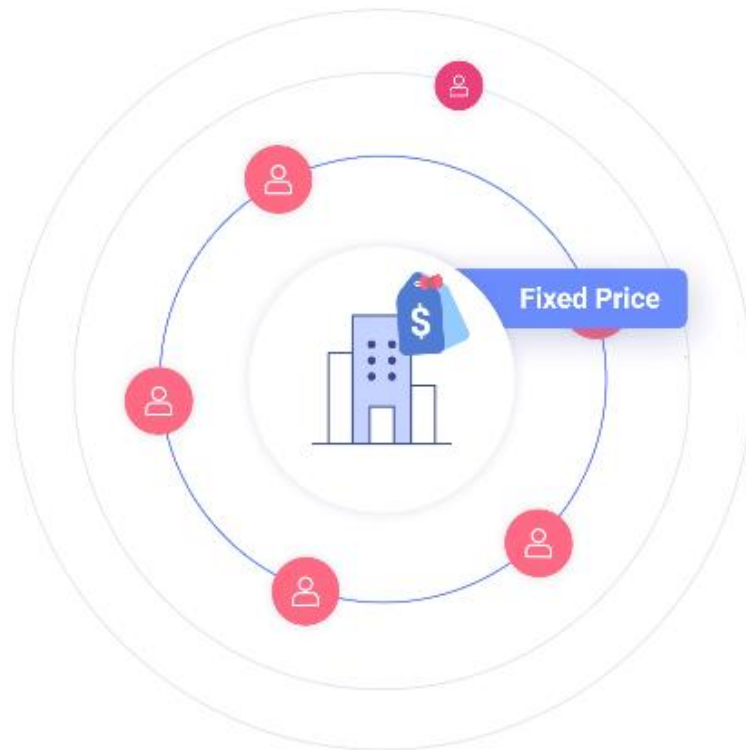
## H2: Designed for Developers, Loved by End-Users

Paragraph:

Reveal works **with** your platform, not against it. Whether you're building for web, mobile, or desktop, Reveal **seamlessly integrates** into your tech stack. It supports **all cloud providers, major back-end frameworks** like Java, .NET, and Node.js, and runs on **Windows, Linux, and macOS**.

## H2: Transparent Pricing, No Hidden Costs

Corresponding visual:




Paragraph:

Unlike Luzmo, Reveal doesn't have pricing tiers with complex limitations, making budgeting and scaling a nightmare. Reveal offers straightforward pricing—unlimited users, unlimited scalability, and no surprise fees. Get full access to advanced features at one fixed price and simplify budgeting and scaling for your business.



## Social Proof



“



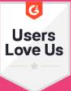


**This is the magic. On the fly, we transform data from disparate data sources into visual displays that the brain can understand and act on.**


Jim Richardson  
President of Atanasoft

[Read Story →](#)

## Testimonials


### What People are Saying About Reveal






I've been using Reveal BI for 1 week, and I must say it is completely awesome. I like the intuitive user interface, seamless...

**Jeya J.** [Full Review →](#)





The Reveal SDK is ideal for detecting errors in the programming language and creating Add-ons to increase and...

**Evan B.** [Full Review →](#)



Reveal has established excellent base for our customers and sales team to explore and raise their concerns on our products and...

**Ronald H.** [Full Review →](#)



## FAQ

## What does Luzmo do?

Luzmo is an embedded analytics tool designed for basic reporting and data visualization. It offers a drag-and-drop interface but uses a hosted, iFrame-based solution, limiting flexibility, customization, and scalability as your business grows.

## Why do businesses seek Luzmo alternatives?

Many businesses outgrow Luzmo as they need deeper analytics, more customization, and better scalability. Users often report challenges with dashboard organization, copy-paste functionality, performance with large datasets, and limited advanced analytics. Reveal solves these issues with a true embedded SDK, AI-powered insights, and seamless navigation.

## Which platform is better for developers?

While Luzmo provides basic documentation, many developers find it lacking depth for troubleshooting complex integrations. Reveal, on the other hand, offers comprehensive guides, API documentation, tutorials, and dedicated support to ensure a smooth development experience.

Furthermore, while Luzmo's low-code approach and iFrame solution have their benefits, it limits the developers' control over the workflow and analytics implementation. In contrast, Reveal is designed for developer flexibility, offering SDKs for Angular, React, JavaScript, .NET, and more, giving full control over integration and customization.

## How to copy-paste functionality between dashboards in Luzmo?

You can't. Luzmo does not support copy-paste functionality between dashboards. This requires manual input each time. Reveal eliminates this hassle with template-based dashboards and reusable components, significantly improving your workflow efficiency.

## Are Luzmo's functionalities enough for my business?

If you need basic embedded analytics and have a small-volume database, Luzmo will meet your needs. However, if your business demands real-time data performance, advanced customization, unlimited white-labeling capability, and robust data handling, Reveal is the stronger choice.

## Does Luzmo provide a true embedded sdk?

Luzmo primarily functions as a hosted solution, requiring you to use iFrames. Reveal gives you a fully embedded SDK—no iFrames—so you can seamlessly integrate analytics into your app with complete control over your user experience.

## Which platform integrates more seamlessly into applications?

Reveal provides a fully embeddable SDK, directly allowing for deep application integration. Unlike Luzmo, which relies on hosted iFrames, Reveal ensures a native, secure, and seamless user experience without compromising performance or flexibility.

## Can I fully control the UI and analytics experience with reveal?

Yes! Reveal offers complete white-labeling, CSS-based styling, and API-driven customization. This allows businesses to completely tailor the UI and analytics experience to fit their brand. Luzmo has some customization options, but full branding and UI control require higher-priced plans.

## Does reveal support white-labeling?

Yes! Reveal offers full [white-labeling](#) capabilities, enabling businesses to remove all Reveal branding and create a fully customized analytics experience that blends seamlessly into your application.

## Is Luzmo's navigation good?

Navigation is one of Luzmo's downsides. If you're working with just one dashboard, it's fine—but managing multiple dashboards quickly becomes challenging. In contrast, Reveal offers intuitive navigation, making it easy to manage multiple dashboards effortlessly.

## Which platform is better for security?

Luzmo offers basic security features like authentication and access controls but relies on a hosted SaaS model. Reveal goes further—providing full data control, audit trails, compliance support, and flexible deployment (on-prem, cloud, or hybrid), all built into a true embedded SDK. If security is critical, Reveal is the more sophisticated choice.

## How do reveal and luzmo compare in terms of scalability?

Reveal is built for high-performance scalability, handling large datasets with real-time querying, data pre-aggregation, and lazy loading. Luzmo users have reported performance slowdowns with big data, making Reveal ideal for scaling.

## Does reveal or luzmo charge based on users or usage?

Luzmo has three pricing tiers, each imposing different per-user or per-designer limitations. They max out at 1000 monthly users and 30 developers, which is way too small for enterprise-level companies with thousands of users daily. Reveal offers fixed, transparent pricing with no hidden fees or limitations. **Scale freely—add developers, users, and data sources without increasing your costs.**

## Which platform offers better Long-term cost efficiency?

Reveal offers fixed pricing—no hidden fees, no charges for users, usage, or data volume. Luzmo's SaaS model gets expensive as you scale. For long-term savings, Reveal is the smarter, more predictable choice.

## CTA

### Tired of Luzmo's Limits and Monthly Fees?

Want to build dashboards quickly, get unlimited white-labeling, and **scale worry-free**? Reveal delivers advanced analytics, seamless navigation, and unlimited scalability—**all at one fixed price!**

**Ready to experience Reveal?**

**Button: [Schedule Your 1:1 Demo]**

**Reveal | Embedded Analytics Without Limits™**