

A

(helpful must-know, must-go, neighborhood-navigating)

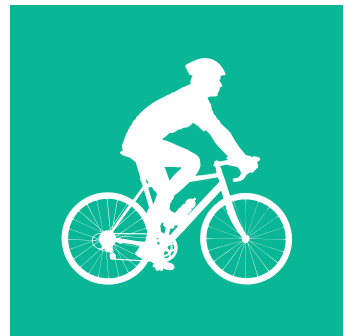
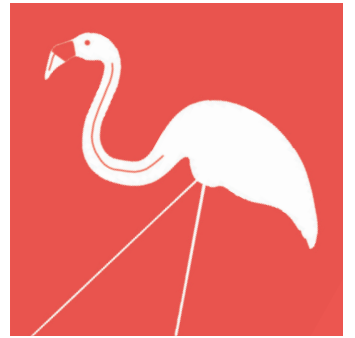
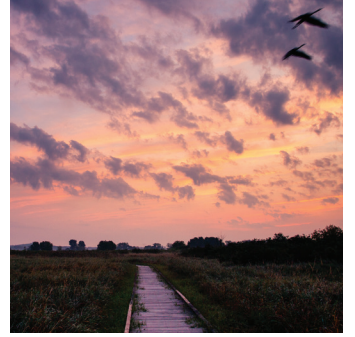
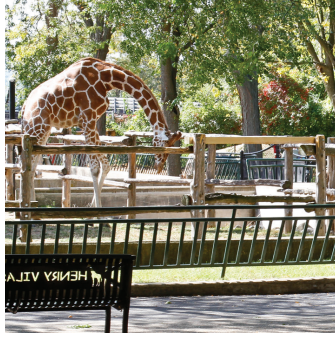
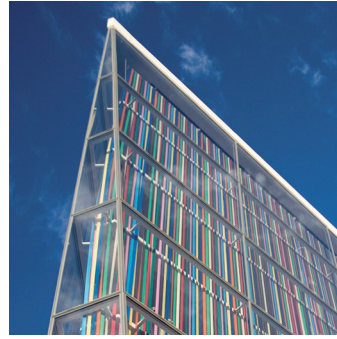
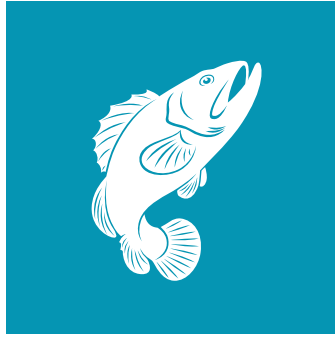
NEWCOMERS  
GUIDE

TO

MADISON

*Let us show you around  
your new isthmus city.*

by LYNN ARMITAGE



GETTY IMAGES COURTESY OF: BRAT FEST; MWCA; WCO; CLEAN LAKES ALLIANCE; MADISON MALLARDS; ADDITIONAL PHOTOS BY TRACY TUCHOLSKI; MALORY GOLDINI; MATT GILLIS; BENKRUT; SOPHIA ALLEN; GETTY IMAGES



**W** **HEN YOU MOVE SOMEPLACE NEW**, you're lucky if there's a moment of reassurance that, yes, you're in the right place. ¶ For newcomers to Madison, that moment is likely to happen when driving down John Nolen Drive toward the heart of Wisconsin's isthmus city—one of only 24 in the world. Picture a red-orange sun setting on a hot summer day as you approach the point where the road cuts between Lake Monona and the bay, with the gorgeous domed Capitol on the horizon. It's a stunning centerpiece in a skyline rivaled in beauty only by its own reflection in the glistening lake. As you turn the corner on John Nolen, you notice kayaks and paddleboards bobbing near the shore while joggers take in the last bit of sunlight on the lakeside path. ¶ It gets us every time. ¶ If you're an out-of-towner and find yourself taken by this sight, you're a-goner—might as well start forwarding your mail now. ¶ For those who've just moved here or soon will, welcome to Madison—a social, cultural and intellectual hub that is worthy of the top spots it's often awarded in “best places to live” polls. In this guide, you'll learn about the city's distinct neighborhoods and pockets of eclectic restaurants, shops and histories that give this place its unique character. Madison is a city welcoming to bicyclists, families, students, foodies, Badgers fans, environmentalists, feminists, farmers, ice fishers, city dwellers, art lovers and, most importantly, you. ¶ Still not convinced you should move here? Grab a sunburst seat and a drink at the Union Terrace, page through this guide and get back to us on that.



## FUN FACTS

- The plastic pink flamingo is the official bird of Madison.
- There are only two major cities in the U.S. built on an isthmus: Madison and Seattle.
- In 1968, UW Hospital performed the first bone marrow transplant in the U.S.
- A time-honored tradition is to rub the left foot of the Abe Lincoln statue on Bascom Hill for good luck.
- The Wisconsin state Capitol was completed in 1917 and celebrates its 100th anniversary this year.
- Madison and Milwaukee are 77 miles apart.
- Madison has 141 properties and districts listed on the National Register of Historic Places.
- Madison is home to the World's Largest Brat Fest, held each year on Memorial Day weekend.
- In 2016, Fitbit named Madison the fittest city in America.

# Madison-isms

*First, there are a few things you'll want to know about this town.*

## Vegging Out

Farmland abounds in Dane County, occupying more than 66 percent of the land, according to the Wisconsin Farm Bureau Federation. With so much fresh, homegrown food available, it's no wonder the Dane County Farmers' Market on Capitol Square every Saturday from April to November is a popular attraction. A proud local tradition dating back to 1972, it's the largest producer-only farmers' market in the U.S., featuring more than 300 vendors—and a few talented musicians and street performers.

## Young at Heart

Madison buzzes with infectious energy. What else would you expect from a Big Ten college town where more than half the population is younger than 30? Student enrollment in 2016 at the University of Wisconsin–Madison was 43,338. U.S. News & World Report recently ranked UW–Madison as the 10th best public college in the country. At Epic Systems—an electronic health records company and the largest private-sector employer in Dane County with more than 9,500 employees at its headquarters in Verona—the average employee age is 29. Careful. All this youth could rub off on you!

## Big on Bikes

Two wheels rule in Madison, which is ranked by USA Today and Bicycling.com as one of America's top cycling cities and is one of only four U.S. cities to receive Platinum status for its bike friendliness by the League of American Bicyclists. Madison offers more than 200 bike trails totaling 100 miles. Pedal along scenic Lake Monona or venture into nature on the Arboretum Trail. Don't own a bike? Rent from BCycle, a bike-sharing program with 40 rental hubs around town. Looking to make new friends? Join a bike club or sign up for biking events.

## Lake Lovers

It's a "City of Four Lakes," but there are actually five—Monona, Mendota, Waubesa, Kegonsa and Wingra. The first two are the largest and get much of the attention, but which is which, again? Don't be surprised when you start asking yourself out loud, "Is that the lake with two n's or a d?" As you're driving toward the Capitol, Monona is to the south and Mendota is north. If you're sitting on the patio eating dinner at Sardine, that's Monona in your view. When you're jogging out to Picnic Point, that's Mendota. You'll get it, eventually.



**Did You Know?** In 1967, "Sittin' on the Dock of the Bay" singer **Otis Redding** was killed in a plane crash in Lake Monona. Check out the stunning "Try a Little Tenderness" mural painted in his honor in late 2016 on the 1100 block of Williamson Street.

## Madison-isms cont'd

### Kinda Quirky!

Sometimes, Madison is a little out there. Consider the yearly Naked Bike Race and Freak-fest, a Halloween block party that takes over State Street. But that just adds to the city's charm, right?

### All Dolled Up

Madison has some familiar names. Middleton, a Madison suburb, is home to the American Girl doll enterprise, started by the Pleasant Company in 1992. Other famous faces from the area include artist Georgia O'Keeffe, born in Sun Prairie, and famed architect Frank Lloyd Wright, who moved to Madison when he was 12 years old.

### Super Suds

We have two great loves: Badgers and beer. Not surprisingly, the two often go hand in hand. The golden libation flows freely out of more than 40 pubs and breweries and scores of restaurants in between. Join a sea of game-day red on Regent Street's strip of sports bars, or peruse impressive beer lists found throughout the city.

**Madison is the "best."** No, really—year after year, Madison pops up on countless "Best Cities" lists. In 2015, it topped the list on [Livability.com](#). It also ranks high as the best place to live for 20-somethings, STEM professionals, young families and retirees. Perhaps one reason is that the average commute time is less than 20 minutes. Or maybe it's our Midwestern niceness.



SAMUELLI

### Stunning Centerpiece

Our Capitol stands tall. No question, the Wisconsin state Capitol steals the limelight downtown. The seat of power mesmerizes 24/7, even from a distance. At 284 feet, it's the second-tallest capitol building in the U.S., after Washington, D.C., and the tallest building in Madison. In fact, a city ordinance prohibits building any structure in Madison taller than the state's stunning Capitol.

### Hidden History

Madison gets its name from James Madison, the fourth U.S. president. Turn your attention to downtown street signs and you will soon detect a pattern: Jefferson, Hamilton, Monroe. Many streets bear the names of the 39 signers of the Constitution. City planners have woven a daily history lesson into the fabric of this college town.



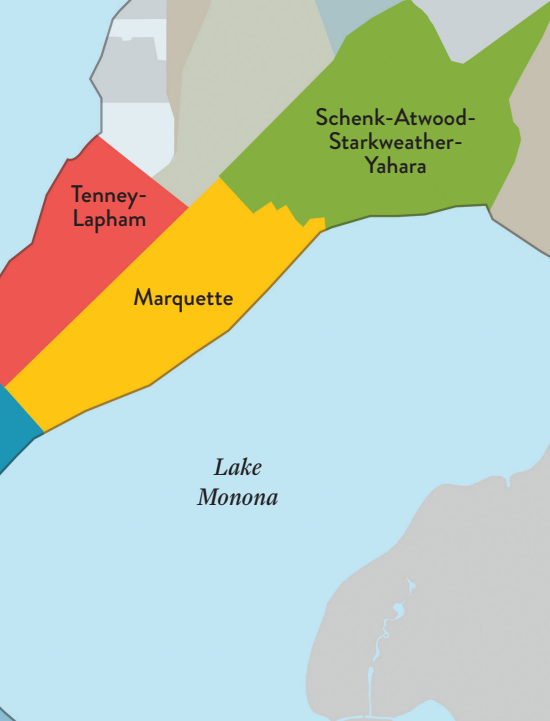
## Welcome to the Neighborhood!

What is so charming about Madison, the second-largest city in Wisconsin, is its 124 vibrant neighborhoods scattered across nearly 77 square miles of land. With distinct vibes of their own, they blend seamlessly into the town's tapestry to form one welcoming, diverse community. Come with us while we take you on a tour of five of the largest neighborhoods: Capitol, Regent, Tenney-Lapham, Marquette and Schenk-Atwood.

## CAPITOL NEIGHBORHOODS

Rich with history, the Capitol Neighborhoods encompass five districts in the downtown area, including the state Capitol: Bassett, Mifflin West, First Settlement, Mansion Hill and James Madison Park. It is an interesting confluence of old versus new, as the city's oldest residential neighborhood has made room for trendy, modern high-rise apartment buildings.

The area attracts an eclectic mix of residents, too—from working professionals to students, and young families to retirees. The culinary scene is just as diverse. Enjoy fine dining at Graze or The



BY Bryce Richter / University of Wisconsin-Madison (below); Robert Farrell (upper right).

Old Fashioned near Capitol Square, or grab a slice of pie at the legendary Ian's Pizza by the Slice—the go-to place after midnight. The creative pizza flavors will amaze you, such as smoked brisket and tots and chipotle sweet potato.

Located in the heart of the city, Capitol Neighborhoods are flush with all kinds of goings-on. You won't run out of things to do. Check out the Dane County Farmers' Market on Capitol Square every Saturday morning from April through November; stroll down State Street (but remember not to drive down it) for some people-watching and window shopping; or attend a symphony, play or ballet at the Overture Center for the Arts.



**A MUST-SEE:**

**Monona Terrace Community and Convention Center.** Originally envisioned by renowned architect Frank Lloyd Wright, Monona Terrace opened in 1997 and has since become one of the focal points of Madison, extending 90 feet over Lake Monona. Great gift shop and unbeatable views of the city.



**REGENT**

You will feel an unmistakable energy in University Heights, one of Madison's first suburbs. It borders the university and Camp Randall football stadium, so on game days, the streets of the Regent neighborhood turn a movable red with zealous Badgers fans hopping from tailgate parties to the many bars along Regent Street, such as Lucky's 1313 Bar & Grille, Jordan's Big Ten Pub and SCONEBAR. Notable architects, like Frank Lloyd Wright, Louis Sullivan and George W. Maher, designed many older Queen Anne- and prairie-style homes in the area, so history abounds here. Monroe Street is a virtual homage to small business, as many eclectic, one-of-a-kind shops, salons and eateries line the street. Mickies Dairy Bar, opened in 1946, is a pillar of the neighborhood, famous for its very large breakfasts. Go early, as the line stretches out the door on weekends.

**Resources**

**CAPITOL NEIGHBORHOODS**

- **Madison Senior Center**, 330 W. Mifflin St.
- **Fire Station #1**, 316 W. Dayton St.
- **Police stations:** South District, 825 Hughes Place; Central District, 211 S. Carroll St.
- **Central Library**, 201 W. Mifflin St.; Neighborhood Association meetings convene here the fourth Tuesday of each month
- **Neighborhood contact:** Jeff Vercauteren, 608-445-9384, and Scott Kolar, info@capitolneighborhoods.org
- **Neighborhood newsletter:** Downtown Dialogue

**REGENT**

- **Neighborhood House Community Center**, 29 S. Mills St.
- **Fire Station #9**, 201 North Midvale Blvd.
- **Police Station:** South District, 825 Hughes Place
- **Library:** Monroe Street Branch, 1705 Monroe St.
- **Neighborhood contact:** Dan O'Callaghan, 608-255-2226; daocallaghan@michaelbest.com
- **Neighborhood news contact:** Mary Sarnowski, sarnowski@mac.com; regentneighborhood.org



**A MUST-SEE:**

**Camp Randall Stadium.** Whether you like football or not, blitz to the UW-Madison football stadium, home of the Badgers since 1895. A century old this year, Camp Randall is the oldest stadium in the Big Ten Conference and seats more than 80,000 people. The best view is from the back door of the gift shop, which opens up on the end zone.



## TENNEY-LAPHAM

The historic Tenney-Lapham neighborhood on the east side of the isthmus is a residential hotspot for people seeking to rent or buy. The majority of the homes date back to the turn of the century, with a good mix of large to small homes, accommodating households of all sizes. The area offers three city parks, and with easy access to Lake Mendota and the Yahara River, residents enjoy water activities year-round, including sailboating and ice skating. Are you getting hungry? Head to the East Johnson Business District, where you will find many creature comforts, including top-notch restaurants. Casual dining options include the laid-back Caribou Tavern for great burgers and beer, and Salvatore's Tomato Pies for authentic Italian pizza. For finer dining, try the upscale 18-seat Forequarter restaurant, known for sourcing local ingredients, or take a seat at La Taguara for real Venezuelan and Latin American dishes.

## MARQUETTE

History buffs adore the Marquette neighborhood, one of the oldest neighborhoods in town—and named one of the nation's "10 Great Neighborhoods" in 2013 by the American Planning Association. Many homes date back to the early days of Madison in the 19th century. Even so, modern times have found a home here as



### MUST-GO:

**Burnie's Rock Shop and Breese Stevens Field.** A real neighborhood gem is Burnie's Rock Shop, an earth science store founded in 1962. Over the years, the rock and fossil specimen store morphed into the go-to place for gemstones, stone cutting and polishing, and jewelry making, design and repair. Breese Stevens Field, named after a former Madison mayor, is an athletic field and the oldest masonry grandstand in Wisconsin. It is listed on the National Register of Historic Places and the Wisconsin State Register of Historic Places.

well, in the form of contemporary condominiums and apartments. The most notable area of this neighborhood is Williamson Street, better known as "Willy Street," and famous for its offbeat, hippie vibe. The locals have a slogan, "Keep Willy Street Weird." It suits this eclectic neighborhood to a T, with its one-of-a-kind, locally owned shops and restaurants, including the very popular organic market Willy Street Co-Op. Home to many artists and creative folks, the Marquette area, no surprise, is practically the festival capital of Madison, hosting four every year—plus a chili dinner in March. In the spirit of oddness, you will find many unique eateries, such as Pig in a Fur Coat and Umami Ramen & Dumpling Bar for fine dining, and Lazy Jane's Café and Bakery for a more casual meal.

### A MUST-DO:

#### *La Fête de Marquette*

The Marquette neighborhood hosts its fair share of festivals every year. One that draws a lot of attention is La Fête de Marquette, a four-day eating, drinking and music-playing extravaganza in Central Park. Festival lovers of all ages are welcome.



## Resources

### TENNY-LAPHAM

- **Lapham Elementary Gardens**, 1045 E. Dayton St.
- **Fire Station #3**, 1217 Williamson St.
- **Police station**: Central District, 211 S. Carroll St.
- **Libraries**: Central Branch, 201 W. Mifflin St.; Hawthorne Branch, 2707 E. Washington Ave.
- **Neighborhood contact**: Patty Prime, 608-251-1937; pprime@gmail.com
- **Tenney-Lapham Neighborhood Association Newsletter contact**: Jessi Mulhall, 608-298-7283; tina.newsletter@gmail.com regentneighborhood.org

### MARQUETTE

- **Wil-Mar Community Center**, 953 Jenifer St.
- **Goodman Community Center**, 149 Waubesa St.
- **Community Gardens**, 2000 to 2100 blocks of E. Main St.
- **Fire station #3**, 1217 Williamson St.
- **Police station**: Central and East Districts, 211 S. Carroll St.
- **Central Library**, 201 W. Mifflin St.; Hawthorne Branch, 2707 E. Washington Ave.
- **Neighborhood contact**: Lynn Lee, 608-512-6147 president@marquette-neighborhood.org
- **Newsletter**: Wil-Mar Gazette; contact Shelli Lawler, 608-256-3527

### SCHENK-ATWOOD

- **Goodman Community Center**, 149 Waubesa St.
- **Community Gardens**, 2000 to 2100 blocks of E. Main St.; Atwood gardens north of Atwood Ave.; St. Paul Gardens on the 3000 to 3200 blocks of St. Paul Ave.
- **Fire Station #3**, 1217 Williamson St.
- **Police station**: Central and East Districts, 211 S. Carroll St.
- **Libraries**: Hawthorne Branch, 2707 E. Washington Ave.; Pinney Branch, 204 Cottage Grove Road
- **Neighborhood contact**: Brad Hinkfuss, 608-242-9573; bradhinkfuss@gmail.com
- **Newsletter**: Eastside News; contact Joanne Yanna, eastsidenews@goodmancenter.org

# Explore Life to the Fullest



## OAKWOOD'S REHABILITATION PROGRAMS

offer comprehensive care to speed up your recovery from surgery, injury, or illness. Expert physical and occupational therapists will guide you through daily sessions to rebuild strength, balance, and mobility to resume your active life.



OAKWOOD VILLAGE

PRAIRIE RIDGE

5565 Tancho Drive, Madison  
608-230-4620



OAKWOOD VILLAGE

UNIVERSITY WOODS

6205 Mineral Point Road, Madison  
608-230-4253



[www.oakwoodvillage.net](http://www.oakwoodvillage.net)

You are cordially invited to the inaugural

# Women *in* Business

Presented by:



Sponsored by:



# Event

Listen and learn from our distinguished panel of successful businesswomen as they tell their path to success stories.

Moderator:



**Susan Siman**  
Anchor/Reporter  
WISC-TV

Panelists:



**Kim Lobdell**  
President & Owner  
KL Engineering



**Ana Hooker**  
Sr. VP, Operations  
Exact Sciences



**Dr. Lori Veerman**  
DDS & Co-Owner  
Madison Family Dental



**Kirsten Houghton**  
Principal  
SVA CPA

THE  
**EDGEWATER**

June 20, 2017 - 7:30am - 9:30am

Register at [SVA.com/Women](http://SVA.com/Women)



DON'T MISS THE 23<sup>RD</sup> ANNUAL



CONCERT  
ON THE GREEN



MONDAY, JUNE 19, 2017 | BISHOPS BAY COUNTRY CLUB

**TWO WAYS TO PARTICIPATE:**

- Daytime golf and evening concert/dinner
- Evening concert and dinner

For more information and to register now, visit:

[madisonsymphony.org/cog](http://madisonsymphony.org/cog)

**REGISTER  
BY MAY 19**

*to receive the early  
bird rate!*

Proceeds from Concert on the Green benefit the Madison Symphony Orchestra's Education and Community Engagement Programs.

MADISON  
SYMPHONY  
ORCHESTRA

John DeMain | Music Director



MADISON SYMPHONY  
ORCHESTRA  
LEAGUE



**MADISONSYMPHONY.ORG/COG**

**SCHENK-ATWOOD**

Drive through this part of town and you soon realize you've happened upon someplace special. It looks and feels like Main Street, U.S.A. Located along the north shore of Lake Monona, the Schenk-Atwood-Starkweather-Yahara neighborhood features comfortable, modest single-family homes and duplexes mixed in with retail shops and restaurants. The heart of the neighborhood is the Goodman Community Center, a nonprofit organization that offers a welcoming space for families, children and seniors in the area, with its teen center and fitness facility. The center also caters to food-insecure families through its pantry, feeding up to 100 families each week with fresh, locally sourced food. Speaking of eating, Schenk-Atwood has its fair share of iconic, casual restaurants, such as Monty's Blue Plate Diner, Next Door Brewing Company and Green Owl Café, a popular vegetarian and vegan restaurant. But don't forget about the kitschy taverns around here too, including Harmony Bar & Grill (live music haven), Players Sports Bar (its burgers are some of the best) and Ohio Tavern (famous for tacos). For dessert, treat yourself to just about anything at Gail Ambrosius Chocolatier. The truffles are divine!



SAMUEL LI

**A MUST-SEE:**

**The Barrymore Theatre.** This 971-seat theater has a long history in Madison. Built in 1929 as the Eastwood Theater, a venue for live theater and film screenings, it experienced many management changes and uses over the decades. In the 1980s, it showed X-rated movies exclusively. Today, the reimagined theater is the pride of the Schenk-Atwood neighborhood, having held more than 2,000 events in the last 20 years, including concerts, dance recitals, community forums and plays.

# TOPNOTCH TEACHERS



## Dance Teacher Marks Milestone Achievement Betty Hayes School of Dance



Betty Hayes first put on tap shoes when she was three years old, and it seems she hasn't taken them off since. Meeting her husband at the dance studio and spawning a professional Broadway dancer, Betty's career as a dance teacher starting over 70 years ago.

Her legacy is evident in the steps her students take. "If she wasn't here, I wouldn't be a good dancer," said one protege. AT 87, Betty is still dancing. This has been her whole life and the song isn't over yet. "I don't know what I would do with myself, so I don't think I can quit yet."



To learn more about Betty Hayes Baxter, other Topnotch Teachers and to nominate a Topnotch Teacher, visit [www.channel3000.com/topnotch-teachers](http://www.channel3000.com/topnotch-teachers).

# Moved Here. Done That.

*Words of wisdom from newly minted Madisonians.*



**LAURA DOOLIN**

Policy initiatives adviser,  
Wisconsin Department of  
Workforce Development

"I accepted a new job in Madison and moved from Chicago in May of 2016."

**First impression:** "Madison is such an active city: student activity, political activity, cultural activity, outdoor activity—even in the winter!"

**Favorite restaurant:** Graze

**Best view:** From a kayak out in the middle of Lake Monona

**Favorite thing:** "The walkability. I love walking through the farmers' market and checking out nearby hiking trails."

**Least favorite thing:** Very limited parking and inconsistent parking rules throughout the city.

**Advice to other newcomers:** "Invest in a nice, long winter coat. Be prepared for the city to get louder and busier when school starts up."



**JEN MCELROY**

Business analyst,  
Wisconsin Department of  
Workforce Development

"I moved to Madison from Chicago at the beginning of December 2016 to be closer to my family."

**First impression:** "Pure love! I love that I can ride my bike, walk or run everywhere I go."

**Favorite restaurants:** Next Door Brewing Co. and Monty's Blue Plate Diner

**Best view:** "Looking across the lake to the Capitol at dusk. It is magical and shocks me anytime I see it."

**Favorite thing:** The history and the architecture.

**Least favorite thing:** Still unfamiliar with how to navigate the city.

**Advice to newcomers:** "Parking near the Capitol is expensive. Ride your bike, rent one or take a bus. Also, check into bike benefits. You get a sticker for your helmet that gets you discounts at coffee shops, bars, salons and more."



**BOB ROBERTS**

Web developer at Getty  
Images

"My wife and I moved from Scottsdale, Arizona, in 2016. My daughter is working on her Ph.D. here, and when we visited, we liked the town."

**First impression:** "Nice little city."

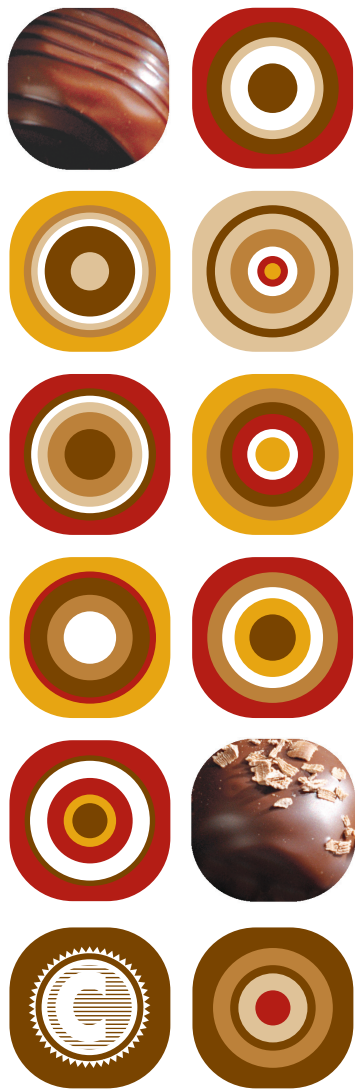
**Favorite restaurant:** Great Dane for overall great beer and food; Nitty Gritty for burgers

**Best view:** The view across the lake toward downtown.

**Favorite thing:** "The city is the perfect size. Big enough for movie theaters and malls, but not too big."

**Least favorite thing:** Bad drivers and not enough snow.

**Advice to other newcomers:** "The buses are great here, but maddening. I found that using Google Maps for directions and then selecting by bus worked the best to find bus stops and departure times."



Pay mom back  
for every naughty deed,  
and still have credit left over.

**CANDINAS**  
CHOCOLATIER

608.845.1545  
www.candinas.com

2435 Old PB  
Verona, WI 53593

11 West Main Street  
Madison, WI 53703

"It's a beautiful city that has a lot to offer people with all kinds of interests."



**KERRY KELLY**  
**Senior human resources specialist, Fabick Cat**

"I lived in Dubuque, Iowa, and decided to move back to Wisconsin, where I am from originally, in December 2015."

**First impression:** "Lots to do, easy to get around, great shopping and restaurants. It's a beautiful city that has a lot to offer people with all kinds of interests."

**Favorite restaurant:** The Great Dane

**Best view:** Memorial Union facing Lake Mendota; John Nolen Drive in the evening along Lake Monona

**Favorite thing:** Tailgating for Badgers football games

**Least favorite thing:** Driving the Beltline.

**Advice to other newcomers:** "Try to experience all areas of Madison. It is a good idea to venture out to the east and north sides, too, because they have a lot going on as well."

**NEWS3**  
**investigates**



**CALL FOR ACTION**  
608.270.2833  
monday • wednesday • friday  
11a-1p  
CHANNEL3000.com/callforaction



**#SmileFirst**

**First Choice DENTAL**

608.848.5366  
firstchoicedental.com  
follow us  

Campus • Downtown • East Madison • Fitchburg  
Middleton • Sun Prairie • Verona • Waunakee • West Madison

 **Our 2nd Sun Prairie Clinic is open on Bristol & Wilburn!** 

WEST ← → EAST

## No Taking Sides

You'll quickly figure out that Madison's east and west sides have distinct personalities.

**WHO DOESN'T LOVE** a friendly rivalry? Cats and dogs. Pepsi and Coke. The Packers and Bears. In the spirit of healthy competition, Madison has its own historic rivalry: The east side of town versus the west side. Author David V. Mollenhoff even named the storied rivalry in a book he wrote about Madison, referring to it as "The Madison Compromise."

We are not saying one side of town is better than the other. Nevertheless, they are distinctly different places to live.

Do you prefer character(s) and culture? East Madison has the character, as seen in its many older Victorian homes in the Tenney-Lapham neighborhood, as well as an eclectic community of characters: the working class, students, artists, musicians, young professionals and free-spirited souls who populate the Marquette area. The east side is more pedestrian- and bicycle-friendly and has more festivals, fewer sprawling malls and strip centers, more tattoo parlors and mom-and-pop shops, and a great collection of unique eateries, such as the Caribou Tavern. Take a stroll down Willy Street, Atwood Avenue or

East Johnson Street and get a feel for the funky east side yourself.

The west side? More like suburbia, with its higher-priced homes, chain restaurants and three big malls—West Towne, Hilldale and Greenway Station. Historic University Heights and Shorewood Hills are the most affluent areas of Madison, where you will gape at stunning Queen Anne homes and Frank Lloyd Wright-designed residences. Many also live comfortably in the outlying suburbs of Verona, Fitchburg and Middleton.

While the east side has free-thinkers, the west side has the paid thinkers. Many university professors live west of the Capitol, as they can easily walk to campus. In fact, according to City-Data.com, 83 percent of Shorewood Hills residents have a bachelor's degree or higher.

However, on UW football game days, east and west (and north and south!) unite as one community at Camp Randall, and all hell usually breaks loose—in a cheerful, loud and spirited way. Because no matter what side of town you live on, we all bleed Badger red.

## NEWCOMERS DATA FOR MADISON

**Census Population:** 233,209 (2010)  
**Average Single-Family Home Value, 2016:** \$254,593 (2017 expected rise: 5-6 percent)  
**Property Tax Rate:** 2.4 percent of assessed value (Madison Metropolitan School District)  
**Retail Sales Tax:** 5.5 percent  
**Median Gross Rent:** \$939/month  
**Median household income:** \$54,896  
**More Info:** [cityofmadison.com/data](http://cityofmadison.com/data)

### EMPLOYMENT

Mean Hourly Wage: \$24.44 (May 2016)  
 Mean Annual Wage: \$50,830 (May 2016)  
 Unemployment Rate: 3.0 percent

### CLIMATE IN MADISON

Average High and Low in January: 28/10  
 Average High and Low in July: 83/60

### TRANSPORTATION

Mean travel time to work: 21 minutes  
 Air: Dane County Regional Airport  
 Public Transportation: Metro Transit provides more than 60 routes throughout the city of Madison.

### EDUCATION

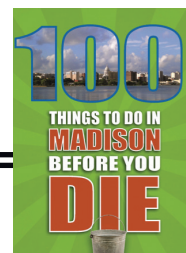
The University of Wisconsin—Madison is the home of Bucky Badger and more than 43,000 undergraduates on a 936-acre campus. As an internationally ranked research institution, UW brings in thousands of international students to participate in the Wisconsin Idea. Edgewood College welcomes over 2,500 students to its private liberal arts setting that overlooks the shores of Lake Wingra on the near west side. In small-set classrooms with around 11 students per faculty member, students are able to thoroughly engage in the classroom with both faculty and peers.

### UTILITY PROVIDERS

Alliant Energy serves approximately 950,000 electric customers and 410,000 natural gas customers. Madison Gas and Electric Company (MGE) provides natural gas and electric service in south-central and western Wisconsin.

Sources: [cityofmadison.com](http://cityofmadison.com), [census.gov](http://census.gov), [revenue.wi.gov](http://revenue.wi.gov), [bls.gov](http://bls.gov), [weather.com](http://weather.com)

**EXPLORATION INSPO:** Of course, there's plenty more to do in the city—a good hundred things, in fact! Pick up a copy of "100 Things to Do in Madison Before You Die" and tackle the town, bucket-list-style, through gotta-try culinary, entertainment, recreational and retail experiences.



# Fly LOCAL



Why fly out of a big box airport when you can fly local out of Madison? Take the Fly Local pledge and enter for a chance to win a \$250 Dane Buy Local gift card at:

[www.flylocalpledge.com](http://www.flylocalpledge.com)



DANE COUNTY  
REGIONAL AIRPORT  
MADISON



# RENDEZ-ZOO CULINARY CRASH

AT HENRY VILAS ZOO

LIVE ENTERTAINMENT - ZOOKEEPER CHATS  
CRAFT COCKTAILS - ONE-OF-A-KIND SILENT AUCTION  
TASTES FROM PREMIER MADISON RESTAURATEURS

Make a reservation for conservation

A 21+ EVENT

6.9.17

[VILASZOO.ORG/RENDEZZOO](http://VILASZOO.ORG/RENDEZZOO)



# MADISON INDEX

A SELECTION OF  
PLACES, BUSINESSES  
AND ADVERTISERS

## ■ ARTS & CULTURE

American Players Theatre, *Spring Green*  
Chazen Museum of Art  
Madison Museum of Contemporary Art  
Overture Center for the Arts

## ■ ATTRACTIONS

Bascom Hill  
Camp Randall Stadium  
Dane County Fair  
Dane County Farmers' Market  
Henry Vilas Zoo  
Memorial Union Terrace

Olbrich Botanical Gardens  
Wisconsin Historical Society  
Wisconsin State Capitol

## ■ BAKERIES

Batch Bakehouse  
Bloom Bake Shop  
Greenbush Bakery  
Lane's Bakery & Coffee  
Madison Sourdough  
Stella's Bakery

## ■ BANKS & CREDIT UNIONS

Associated Bank  
Dane County Credit Union  
Park Bank  
State Bank of Cross Plains  
Summit Credit Union  
U.S. Bank  
UW Credit Union  
Wells Fargo Bank

## ■ BUTCHER SHOPS

Conscious Carnivore  
Jacobson Brothers Meats & Deli  
Knoche's Food Center and Butcher Shop  
Underground Butcher

## ■ COFFEE SHOPS

Ancora Coffee Roasters  
Barriques  
Cargo Coffee  
Colectivo Coffee  
EVP Coffee  
Ground Zero Coffee  
Johnson Public House  
The Sow's Ear, *Verona*  
True Coffee Roasters, *Fitchburg*  
Tuvalu Coffeehouse & Gallery, *Verona*

## ■ DINING

Too many to list! Check out our searchable Dining Guide on [madisonmagazine.com](http://madisonmagazine.com).

## ■ FAITH

AHA Shiva Vishnu Temple  
Blackhawk Church  
Beth Israel Center  
Calvary Lutheran Chapel  
Deer Park Buddhist Center and Monastery  
First Congregational Church  
Fountain of Life Covenant Church  
Holy Wisdom Monastery  
Islamic Center of Madison  
Mt. Zion Baptist Church  
St. Maria Goretti Catholic Parish

## ■ FLORISTS

Farm to Vase  
Felly's Flowers  
George's Flowers  
Momentum Floral and Décor

## WE'RE READY WHEN YOU WAKE UP



# NEWS 3

wisc-tv • channel3000

## THIS MORNING

Save the Date!

THE **Madison**  
MAGAZINE  
EXPERIENCE

**FARM TO BRUNCH**

Sunday, July 23 • 10 am to 2 pm  
Vermont Valley Community Farms

Enjoy farm tours, live music and hors d'oeuvres at the picturesque Vermont Valley Community Farms followed by a multiple course family-style brunch featuring One Barrel Brewing beer pairings.

For more information visit [madisonmagazineexperience.com](http://madisonmagazineexperience.com)

SPONSORED BY

**GRISTLE**

WISCONSIN DISTRIBUTORS

**JUST**  
COFFEE CO-OP

*Enhancements*

wisc-tv • channel3000

**NEWS 3**

**ALWAYS ON**







## Rediscover... Life. Worth. Living.

In Madison, offering adults specialized outpatient care for eating disorders, depression and other mood disorders, OCD and anxiety disorders, addiction and dual diagnosis (mental health and substance use).

Call **800-767-4411** for a free screening or visit [rogersbh.org](http://rogersbh.org).

**May is Mental Health Month!**  
Find stories of recovery at our website



Madison | Oconomowoc | West Allis | Brown Deer | Appleton | Kenosha

### ■ GROCERS

Brennan's Market  
Fraboni's Italian Specialties & Delicatessen  
Hy-Vee  
Metcalf's Market  
Miller & Sons Supermarket, Verona, Mt. Horeb  
Pick 'n Save  
Woodman's Food Market  
Willy Street Co-op  
Yue-Wah Oriental Foods

### ■ HEALTH CARE PROVIDERS

All Saints Neighborhood (ElderSpan)  
American Family Children's Hospital  
Associated Physicians  
Dean Clinics  
Madison VA Hospital  
Oakwood Village  
SSM Health  
St. Mary's Hospital  
UnityPoint Health-Meriter Hospital  
UW Hospital and Clinics

### ■ HOTELS

Best Western West Towne Suites  
The Edgewater  
Graduate Madison  
The Hilton Monona Terrace  
HotelRED  
The Madison Concourse Hotel  
Radisson Hotel Madison  
Sheraton Madison Hotel

### ■ LGBTQ RESOURCES

OutReach LGBT Community Center  
Our Lives Magazine  
New Harvest Foundation  
Freedom, Inc.  
Teens Like Us

### ■ NEWS MEDIA

The Capital Times  
Isthmus  
WMTV 15 (NBC)  
The Wisconsin State Journal  
WISC-TV 3 (CBS)/Channel3000.com  
WKOW 27 (ABC)  
WMSN 47 (FOX)

### ■ NIGHTLIFE

Genna's Cocktail Lounge  
Gib's Bar  
High Noon Saloon  
Lucille  
Madison's  
Merchant  
Nomad World Pub  
The Old Fashioned  
Plan B  
Red Rock Saloon  
Vintage Brewing Co.

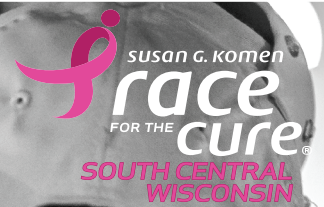
# BE MORE THAN PINK

KOMEN RACE FOR THE CURE®

AGORA AT FITCHBURG CENTER

SATURDAY, MAY 20, 2017

komenwisconsin.org



NATIONAL SPONSORS

LOCAL SPONSORS

Presented by: **Bank of America**

WISCONSIN STATE JOURNAL | *Magie 98* | WISCTV | MADISON.COM | **DENTAL HEALTH ASSOCIATES OF MADISON, LTD.** | klarbrunn | The Gialamas Company, Inc.

American Airlines | **Ford** | **NB** | CUNA MUTUAL GROUP | **Madison magazine** | First American Title Insurance Company | **AMERICAN FAMILY INSURANCE** | **FULL COMPASS** | QBE.

Local Sponsors Continued:  
 Children's Dental Center of Madison S.C. • Culligan Total Water Treatment Systems Inc. • Group Health Cooperative South Central Wisconsin • Hampton Inn and Suites Madison-West • MIG Commercial Real Estate • UW Carbone Cancer Center • Wipfli LLP • Wisconsin Built • WPS Health Solutions • Badger Bus Lines • Coyle Carpet One Floor and Home • Heitzinger and Associates • J.H. Findorff and Son Inc. • Klein's Floral and Greenhouses • Mad City Moving • Orange Tree Imports • CapSpecialty

# Happy Birthday to YOU!



## MADISON MAGAZINE BIRTHDAY CLUB

Join our Birthday Club and receive a complimentary Official Gritty Burger on us and the Nitty Gritty!

To join the Birthday Club, visit [MadisonMagazine.com/BirthdayClub](http://MadisonMagazine.com/BirthdayClub) and enter your email address.

Two days before your birthday, we will email your birthday coupon. It can be used at any Nitty Gritty location and is valid up to two days after your birthday.

**Madison**  
magazine



# THE *Style List*

The **GO-TO GUIDE**  
for **BEAUTY FINDS**  
& **SHOPPING TIPS**

## *Taste*

The **DISH** on  
**DINING**  
& **DRINKING**  
in **MADISON**

## *Habitat*

All Things **HOME**,  
**LIFESTYLE** and  
**TRAVEL**

## *Spotlight*

An **INSIDE LOOK** at  
**LOCAL ARTS &**  
**ENTERTAINMENT**

Sign up for *Madison Magazine*  
Newsletters to get exclusive  
content delivered right to  
your inbox! Sign up at  
[madisonmagazine.com/newsletter](http://madisonmagazine.com/newsletter)

**Madison**  
magazine

### ■ SENIOR SERVICES

Attic Angels  
BrightStar Care  
Home Instead Senior Care  
Home Health United  
Madison Senior Center  
Oakwood Village

### ■ SALON AND SPA SERVICES

ANIU Salon and Spa  
Ecco Salon  
Julia Grace Salon  
Kneaded Relief Day Spa & Wellness  
Midwest Beauty House  
THORPS Haircuts & Color

### ■ SHOPPING & RETAIL

East Towne Mall  
Fine Line Custom Attire  
Greenway Station, Middleton  
Hilldale Shopping Center  
Jazzman  
Karen & Co./Sassafras  
Terese Zache Boutique  
West Towne Mall

### ■ SPECIALTY/GIFT STORES

Burnie's Rock Shop  
Hatch Art House  
Hazel General Store  
Orange Tree Imports  
Pieces Unimagined

### ■ SUPPER CLUBS

Fitzgerald's Restaurant  
Kavanaugh's Esquire Club  
Smoky's Club  
Toby's Supper Club  
Tornado Steakhouse  
The Wonder Bar

### ■ TAKEOUT

Chang Jiang  
Curry in the Box  
Glass Nickel Pizza Co.  
New Orleans Take-Out  
Teddywedgers  
Thai Basil

### ■ WINE & BREW

Ale Asylum  
Cento  
Dexter's Pub  
Eno Vino Wine Bar and Bistro  
Field Table  
The Great Dane Pub & Brewing Co.  
Karben4  
Next Door Brewing Co.  
Old Sugar Distillery  
One Barrel Brewing Co.  
Rockhound Brewing Co.  
Table Wine  
toot + kate's winebar  
Yahara Bay Distillers **M**

## TRUESELLE

Animal Care Hospital and Clinic

Providing friendly, high quality medical,  
surgical and preventative care for pets.

Thank you for your votes! Please  
mention this ad for \$30 off your first visit.

[www.trueanimalcare.com](http://www.trueanimalcare.com)  
4214 Milwaukee St. Madison 608.571.1323



2017  
SILVER

**BEST VETERINARIAN**



THE UNIVERSITY OF WISCONSIN GOLF COURSE  
**UNIVERSITY RIDGE**

**Best of Madison**  
**16th Consecutive Year**  
**Thank you Madison!**

Reservations (608)845.7700  
or [www.universityridge.com](http://www.universityridge.com)

2017  
GOLD

**BEST GOLF COURSE**

**GATES**  
COLLISION CENTERS

Our heartfelt thanks to the Madison  
community for voting Gates Collision Centers  
the Best of Madison. We always strive to  
deliver the best possible customer experience.

A special thanks goes to our dedicated  
and caring employees who make our  
customer-oriented service a reality.

877.428.3741 • [www.gatescollision.com](http://www.gatescollision.com)

2017  
GOLD

**BEST BODY SHOP**