

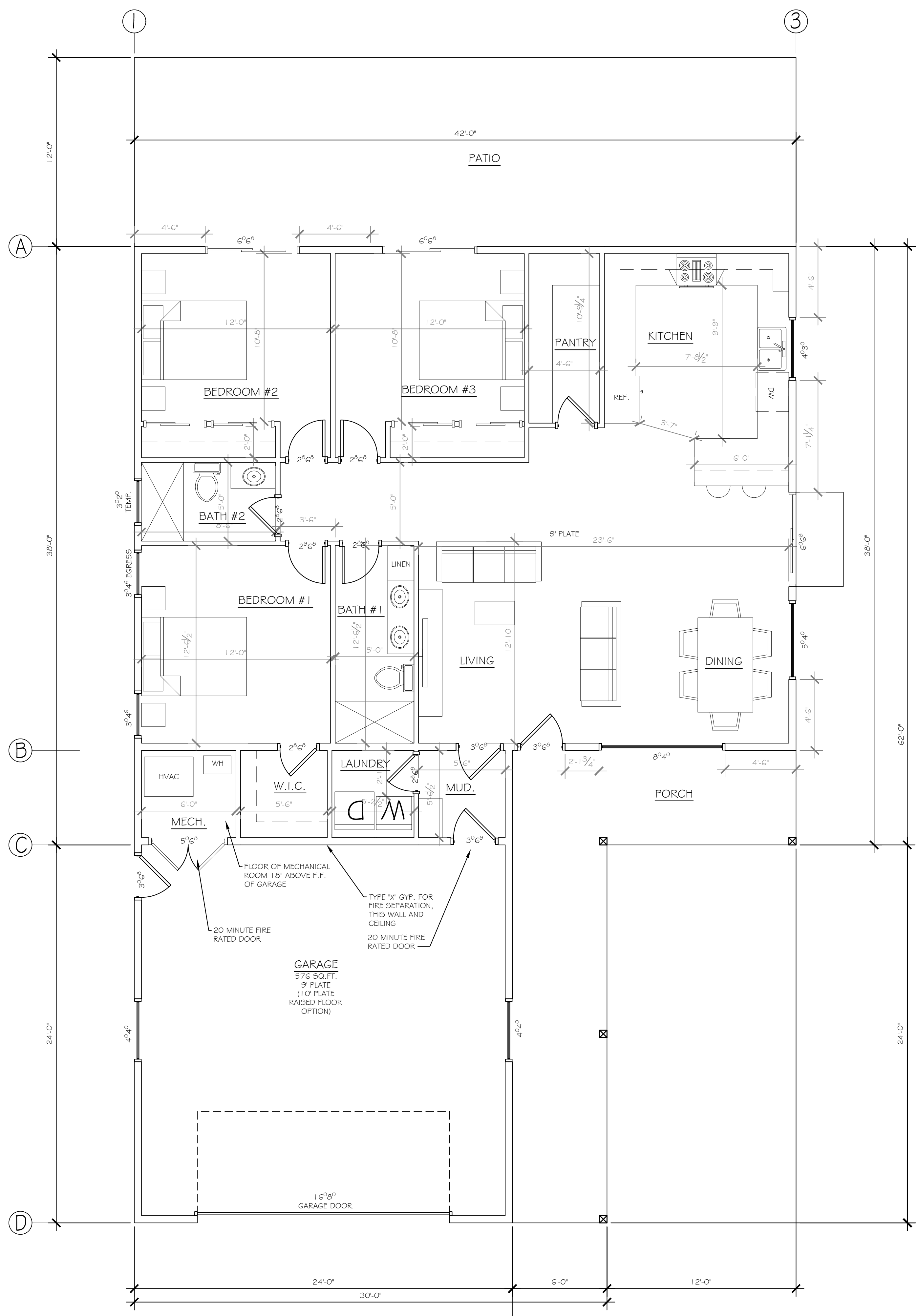
1488 SQ. FT. HOUSE
GREENVILLE FIRE REBUILD

JOB #:
LBK-21-48-1500
DATE:
DECEMBER, 2021
PROJECT DESCRIPTION:
NEW HOUSE / FIRE REBUILD

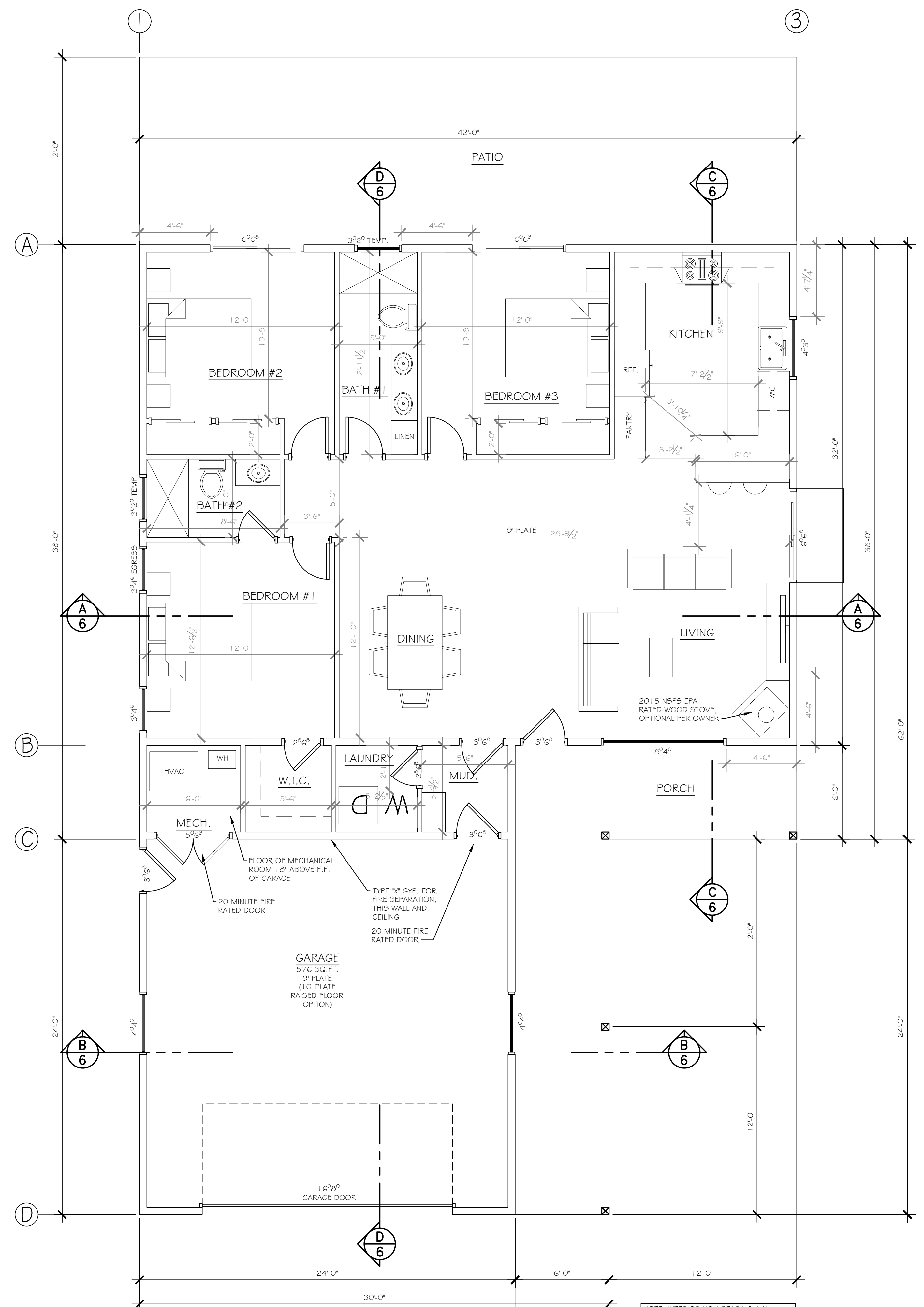
REVISIONS	BY

SHEET TITLE:
FLOOR PLAN

SHEET:
1



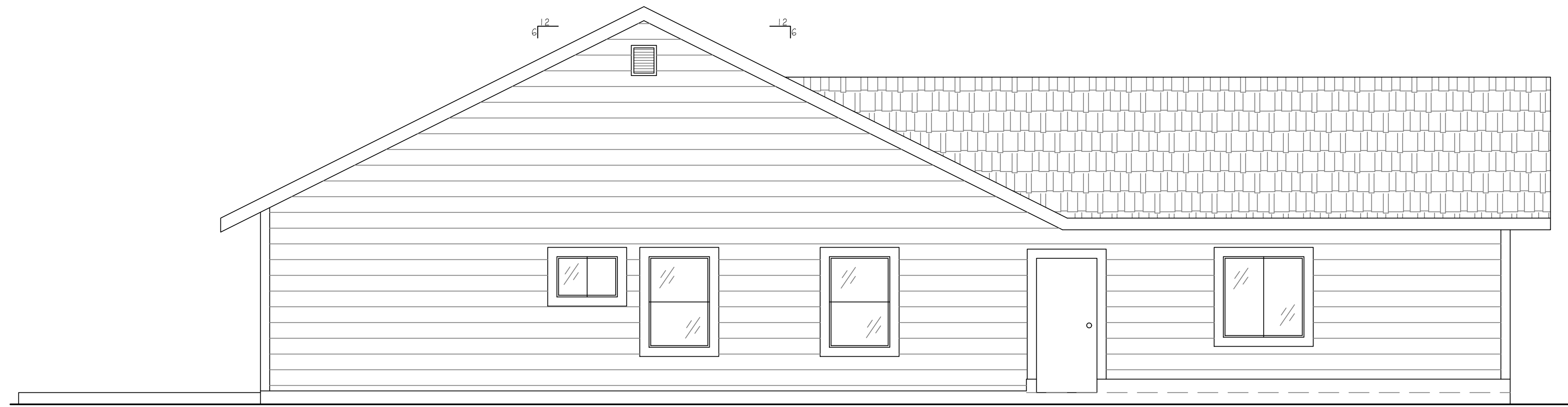
FLOOR PLAN - OPTION B



FLOOR PLAN

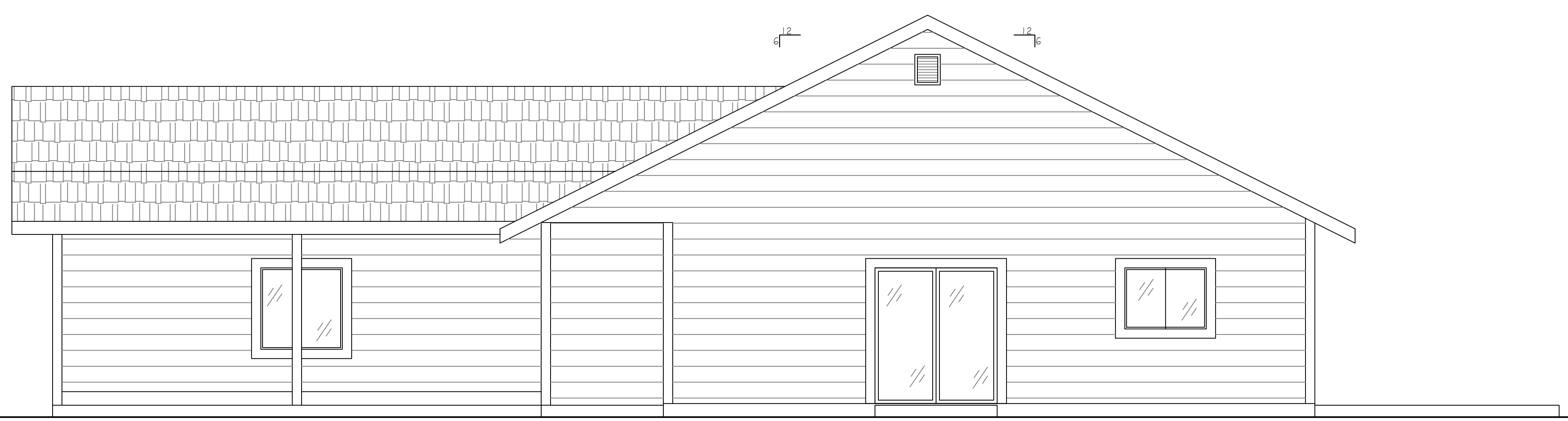
NOTE: INTERIOR NON-BEARING WALL LOCATIONS AND WINDOW AND DOOR OPENINGS ARE FLEXIBLE AS LONG AS THE REQUIREMENTS LAID OUT IN THE SHEAR PLAN AND ROOF FRAMING PLAN ARE MET AND THE MAXIMUM AMOUNT OF GLAZING CALLED OUT ON SHEET E FOR EACH WALL LINE IS NOT EXCEEDED.

COPYRIGHT 2022 ALL RIGHTS RESERVED
THIS WORK IS COPYRIGHTED AND MAY NOT BE COPIED OR REPRODUCED IN ANY FORM OR BY ANY MEANS WITHOUT THE WRITTEN CONSENT OF LBK ENGINEERING & DESIGN.



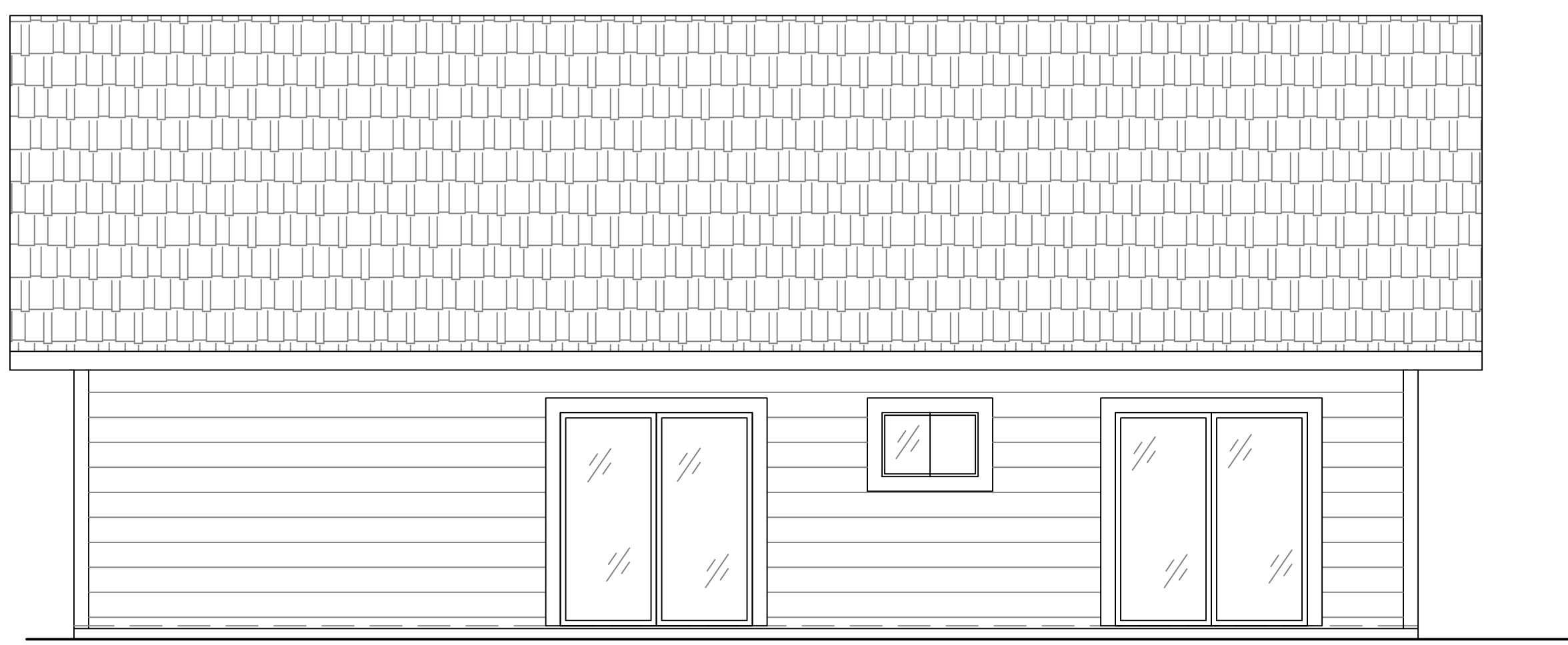
LEFT ELEVATION

SCALE: 1/4" = 1'



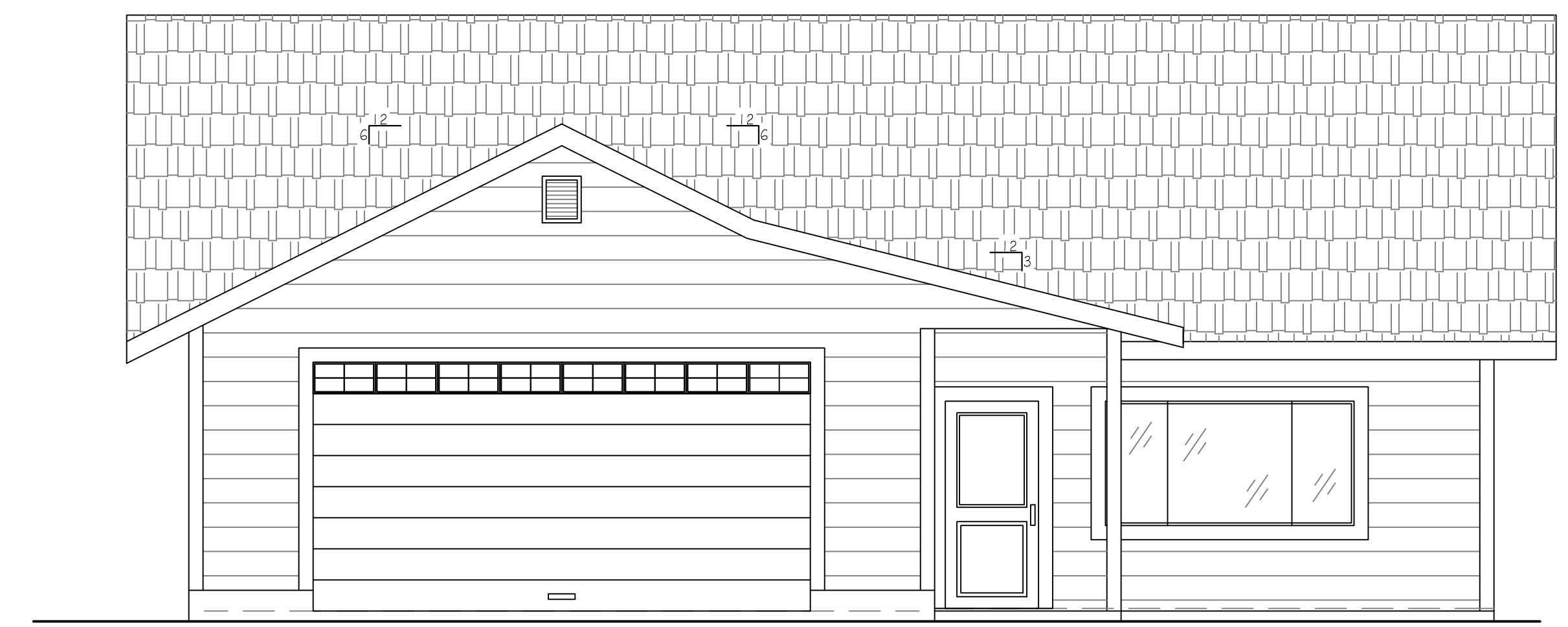
RIGHT ELEVATION

SCALE: 1/4" = 1'



REAR ELEVATION

SCALE: 1/4" = 1'



FRONT ELEVATION

SCALE: 1/4" = 1'

ELEVATION KEY

- ROOF: WUI APPROVED COMP
- SIDING: WUI APPROVED HORIZONTAL SIDING
- WINDOWS: DUAL PANE WUI APPROVED LOW E
- GARAGE DOORS SHALL COMPLY W/ 2019 CRC R609 FOR WIND LOAD AND R337 FOR WUI

NOTE: ALL EXTERIOR MATERIALS USED MUST HAVE STATE FIRE MARSHALL APPROVAL. DOCUMENTATION IS REQUIRED TO BE PROVIDED TO BUILDING DEPARTMENT PRIOR TO INSTALLATION

JOB #: LBK-21-48-1500	
DATE: DECEMBER, 2021	
PROJECT DESCRIPTION: NEW HOUSE / FIRE REBUILD	
REVISIONS	BY

SHEET TITLE:
ELEVATIONS

SHEET:
2