

PERSPECTIVES™

ISSUE 12 / DEC 17



LONDON | MONACO



MAYFAIR AWARDS 2017

The Mayfair Awards 2017 took place on the 27th of November at the Royal Academy of Arts on Piccadilly. Fast becoming an unmissable event on the festive season's calendar, the Mayfair Awards stand out even amongst the many sparkling celebrations that herald the approach to Christmas and the New Year. In 2017, the highly anticipated awards ceremony moved from the Ritz London, its previous home for several years, to the Royal Academy for the first time.



Photography by Sarel Jansen

In describing the significance of this annual event, now in its sixth year, Hannah Lemon, Editor of *The Mayfair Magazine*, which organises the awards, said: "Each year *The Mayfair Awards* highlight and pay tribute to the creativity and talent of Mayfair's outstanding businesses, institutions and individuals, who help to make this one of the most renowned and sought-after communities in the world. This year, we were delighted, once again, to put on these awards in conjunction with a judging panel made up of leading lights of the community and our headline sponsor, Pastor Real Estate."

David Lee, Head of Sales at Pastor Real Estate and a judge on the awards panel, agreed with Hannah's assessment about the pivotal role these awards play in expressing gratitude and recognition for the abundance of talent and ingenuity that sets Mayfair apart. "At Pastor Real Estate," David remarked, "we were proud and privileged to continue our sponsorship of the *Mayfair Awards* in 2017. Our support of this event reflects not only our strong and ongoing commitment to the local area, but also our appreciation for the people that make Mayfair so unique and impressive." David went on to commend the trailblazing skills and spirit that characterise

this area, often leaving other locales struggling to catch up and attempting to emulate its success. He observed, "Whatever line of business you look at, Mayfair undoubtedly is at the forefront."

As noted above, 2017 marked a milestone in the continued growth and evolution of the Mayfair Awards, bringing with it an exciting change of location from the Ritz London to the Royal Academy. "We hosted *The Mayfair Awards* at the Royal Academy of Arts this year," explained Hannah Lemon, "an institution with which we have worked closely in the last years. With its rich history of nurturing the UK's finest artists, the Royal Academy has a wonderful synergy with our celebration of local creativity from local businesses and individuals at *The Mayfair Awards*."

By all accounts, the move to the new venue was a success. The ceremony this year was presented by television personality Mark-Francis Vandelli, and it brought together Mayfair's pre-eminent businesspeople, residents and investors, who spent an evening celebrating the creativity and excellence that Mayfair embodies in a fitting choice of location. The Royal Academy is itself a testament to creative enterprise of the highest standards. A renowned Mayfair institution in its own right, the Royal Academy showcases some of the world's priceless works of art and, each year, attracts thousands of art lovers from across the globe.

Each of the award recipients of this year's Mayfair Awards was recognised and rewarded for their specific achievements within their particular craft, business or role in the community, demonstrating the very pinnacle of service, talent and distinction that characterises Mayfair. The whole team at Pastor Real Estate would like to extend our congratulations to every one of the award winners and to commend them for helping to make Mayfair an internationally coveted area.



Photography by Sarel Jansen

04-05 UNIQUELY LONDON SEASONAL EVENTS



Discover the best sides of winter with our recommendations for Christmas around Prime Central London.

06



THE MARKET 'AT A GLANCE'

The Mayfair and broader UK property market: latest facts and figures providing a snapshot of the current state of play.

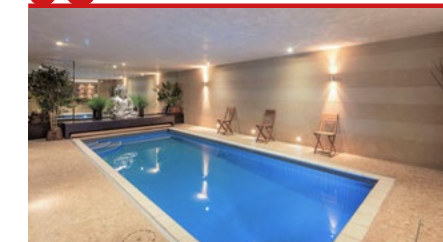
07



PASTOR REAL ESTATE NEW CHELSEA OFFICE

Learn more about Pastor Real Estate's new Chelsea office and discover this issue's featured property.

08



LONDON'S BEST SWIMMING POOLS

Discover the fascination of Prime Central London's best properties with pampering home spas and luxurious swimming pools.

09



CHASE AWAY THE WINTER BLUES & THE OLYMPIA HORSE SHOW

Discover the many exciting London activities in the New Year, and read all about the Olympia Horse Show.

10



A MEMORABLE COUNTDOWN: NEW YEAR'S EVE IN MONACO

The Principality of Monaco has much to offer for New Year's Eve. Follow our suggested itineraries to usher in 2018!

11



MONACO PROPERTIES

A selection of the latest Sales/Lettings instructions currently available through Pastor Immobilier. More are available on the website.

PERSPECTIVES is a registered trademark ©

Pastor Real Estate Limited 2017 and may not be used without express permission. Perspectives is published four times a year: Spring, Summer, Autumn and Winter by Pastor Real Estate. All content is the copyright of Pastor Real Estate Limited, unless subject to the rights of a third party, and use without express written permission from the publisher is forbidden.

The views and opinions expressed in Perspectives are not necessarily those of Pastor Real Estate and Pastor Real Estate accepts no liability for loss or damages however arising as a result of action taken or not taken in reliance upon information published.

Material sent to the title or Editor is deemed to be supplied for publication.

For all editorial enquiries, please contact emma@relevanceweb.com

Sales

11 Curzon Street
MAYFAIR, W1J 5HJ

T +44 (0)20 3867 7845

F +44 (0)20 3195 9596

E contact@pastor-realestate.com

www.pastor-realestate.com

Lettings

48 Curzon Street
MAYFAIR, W1J 7UL

T +44 (0)20 3867 7845

F +44 (0)20 3195 9596

E contact@pastor-realestate.com

www.pastor-realestate.com

Sales | Lettings

8 Elystan Street,
CHELSEA, SW3 3NS

T +44 (0)20 3867 7845

F +44 (0)20 3195 9596

E contact@pastor-realestate.com

www.pastor-realestate.com

12-18



LONDON PROPERTIES FOR SALE / TO LET

A selection of the latest Sales/Lettings and Commercial instructions which are currently available through Pastor Real Estate. More are available on the website.



Each December, as the nights grow longer and the chill in the air gets more pronounced, London prepares to celebrate Christmas and the coming of a New Year.

Here are some of the very best things to do in December in Prime Central London.

Switching on the Christmas Lights A Special Shepherd Market Tradition

In the exclusive, village-like surrounds of Mayfair, one of the most beloved holiday traditions each year involves the switching on of the Christmas lights in Shepherd Market, a charming niche tucked away from the hustle and bustle of London. Bordered by Curzon Street on one side and Piccadilly and Green Park on the other, Shepherd Market invites visitors and residents to step back in time. They can browse through its high-end boutiques and galleries, share a drink or two in its Victorian pubs or well-stocked wine bars, or savour a meal at one of the well-frequented restaurants that line its cosy streets. At Christmastime, this hidden area nestled in the very heart of Mayfair becomes even more enticing, with its twinkling Christmas lights hovering overhead.

This year, the official ceremony marking the switching on of the Shepherd Market Christmas lights will take place

on Thursday, 7th December. Pastor Real Estate is once again delighted to act as the main sponsor for this event, with the support of at least 60 retailers, residents and traders from the area. *"For so many residents of and visitors to Mayfair, the switching on of the Christmas lights in Shepherd Market signals the true beginning of the Christmas period,"* says David Lee, Head of Sales at Pastor Real Estate. *"At Pastor Real Estate, we're thrilled to be able to help welcome Christmas each year in this way."* Families, couples and all those who like to drink in some Christmas cheer will find something to enjoy at this eagerly anticipated annual function.

A special surprise celebrity will act again as the guest of honour and perform the vital, ceremonial role of switching on the lights this year. Both before the lights have been lit and afterwards, revellers can wander through Shepherd Market,

enjoying cups of warm mulled wine, delicious delicacies and Christmassy treats, provided by local establishments, such as L'Etto Caffe and Kitty Fisher's while enjoying Christmas carols and other seasonal performances. Best of all, this celebration also offers Christmas cheer and hope to many less-fortunate Londoners. The Shepherd Market Association and Pastor Real Estate are once again dedicating support from this ceremony to the well-respected charity of St Mungo's, which works to help end homelessness. Support from this event will also go towards fundraising for St George's of Hanover Square Primary School. *"It is so heartening to know,"* says David Lee, *"that, through this wonderful Christmas event in Shepherd Market, Londoners in need will also be able to receive help. Being able to offer support from this occasion makes it even more special and epitomises the true Christmas spirit."*



Photography by Orphée Tehanchian

Christmas Sleepover at the Natural History Museum

What could be more exciting and educational, for children aged seven to 11, than to have the chance to spend a night at London's Natural History Museum, surrounded by scientific discoveries and, best of all, dinosaurs? Kids (and parents too) will be able to experience a Christmas-themed sleepover at the National History Museum, which will be decked out in holiday finery for December. During this special event, which will take place on

Saturday 9th December, children will be able to, among other activities, discover a T-Rex lurking in the shadows; create a dinosaur t-shirt; learn more about these huge animals that once roamed the earth from a museum scientist; enjoy a Christmas carol performance; and meet reindeer. Then, once it's time to settle down for the night, everyone will nod off to sleep beneath the famous blue whale skeleton in Hintze Hall. Find out more and book in advance at: www.nhm.ac.uk



London New Year's Eve Fireworks

For those who like to bid farewell to the old year and ring in the new one with great fanfare, London's New Year's Eve Fireworks celebration might prove too good to miss. This year, as Big Ben dramatically tolls midnight (coming out of its temporary renovation-related retirement just for this special occasion), more than 12,000 fireworks will illuminate the night sky over Westminster. This spectacular pyrotechnical display

set off on the river Thames will bathe the Houses of Parliament, Westminster Abbey and the London Eye in vividly coloured light. If you would like to welcome in 2018 with fireworks, don't forget to book your tickets. Then, on Sunday 31st December, make your way over to the Victoria Embankment to stake out a spot with the very best view. And, don't forget to wrap up warmly, as you bring in the New Year in dazzling style. www.london.gov.uk



DIARY DATES FOR WINTER 2017-2018

A Christmas Carol Service

Tuesday 12th December 2017

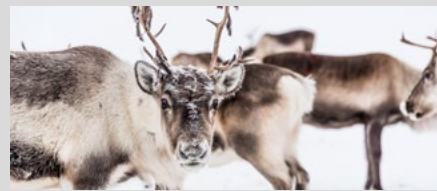
The Mayfair & St. James's Association invites you to carols, mulled wine, and mince pies at St. James's church to put you into a festive mood.
www.mayfairstjames.london



Christmas Breakfast at the London Zoo

Thursday 21st - Sunday 24th December 2017

Sneak into the London Zoo before opening time and take your kids to meet Santa and his reindeers over a sumptuous breakfast.
www.zsl.org



The Mayfair Antiques and Fine Art Fair

Thursday 4th - Sunday 7th January 2018

Discover the world of fine art and antiques in the stunning surroundings of the London Marriott Hotel Grosvenor Square at the heart of Mayfair.
www.mayfairfair.com

London Winter Run

Sunday 4th February 2018

Get out your running shoes and join the 16,000 runners along a course of 10 kilometres fundraising for Cancer Research UK.
www.londonwinterrun.co.uk



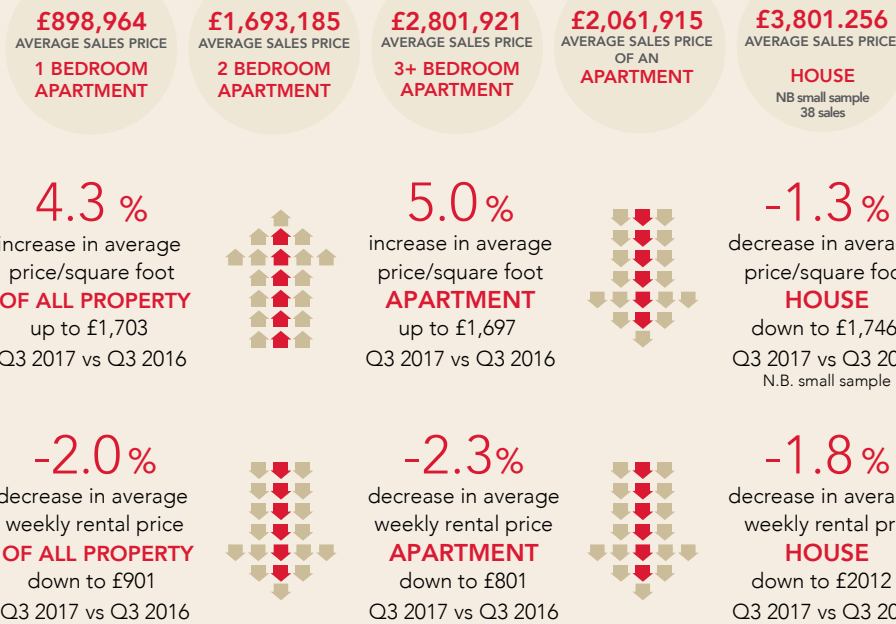
Chinese New Year Parade

Friday 16th February 2018

From dragon dances to drumming, discover London's multicultural side and welcome the year of the dog.
www.chinatown.co.uk



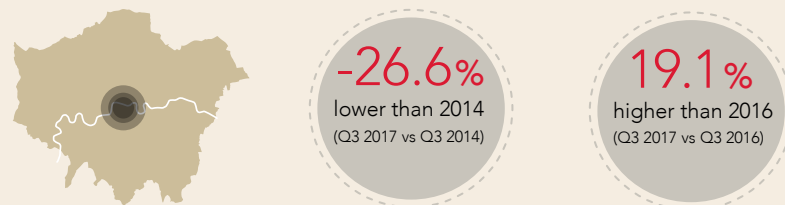
PRIME CENTRAL LONDON AT A GLANCE SW1, SW3, SW7, SW10, W1 (Q3 2017 v Q3 2016)



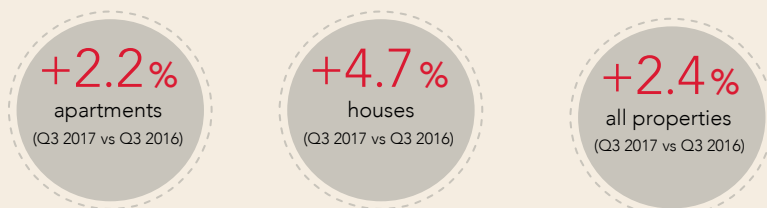
MAYFAIR MARKET - W1J and W1K Sales in the last 2 quarters Q2 2017 and Q3 2017

	Lowest Price	Highest Price	Average Price	Number of Sales	Average £psf
Houses	£1,275,000	£14,800,000	£8,500,000	3	£2,557
Flats	£200,000	£25,600,000	£4,200,000	35	£2,427

PRIME CENTRAL LONDON TRANSACTION VOLUMES

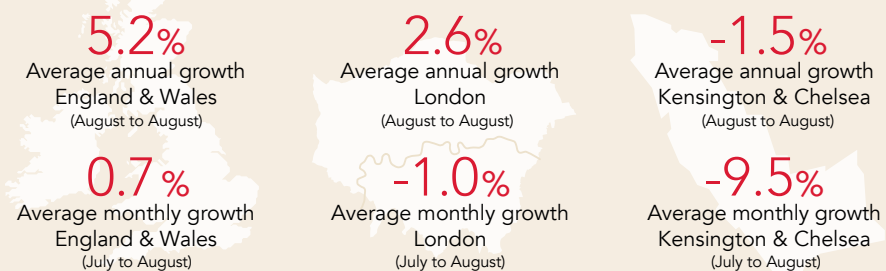


PRIME CENTRAL LONDON RENTAL TRANSACTION VOLUMES



Source: LonRes / data loft

UK HOUSING MARKET



Source: UK House Price Index (Land Registry, Office National Statistics, Valuation Office Agency, Registry of Scotland).

PASTOR REAL ESTATE NEW CHELSEA OFFICE



NOW OPEN

Lettings | Sales

8 Elystan Street,
CHELSEA, SW3 3NS

T +44 (0)20 3867 7845

F +44 (0)20 3195 9596

E contact@pastor-realestate.com

www.pastor-realestate.com

As 2018 approaches, Pastor Real Estate foresees even greater possibilities for growth in the Prime Central London market, with the areas of South Kensington and Chelsea of particular interest to the company and their clients. With this in mind, Pastor Real Estate is pleased to announce the opening of its dedicated Chelsea office at 8 Elystan Street, Chelsea, SW3. Having always had strong connections in Kensington and Chelsea, Pastor Real Estate is looking forward to being part of this thriving local community and is excited to be working alongside other independent businesses in this historic and vibrant area.

Philip Cook, who joined the Sales Team in June 2017, will be accompanied by Elisabeth Erard, Senior Lettings Negotiator, at the Pastor Real Estate Chelsea office. As a key member of the sales team, Philip will draw on his 9 years of property experience in the Kensington and Chelsea markets to bring new business and instructions to Pastor Real Estate's portfolio. "With Pastor Real Estate's wealth of experience and expertise in every aspect of the luxury real estate market," Philip comments, "we are expecting to make a substantial mark in the sought-after areas of South Kensington and Chelsea due to the variety of property services we offer as an agency. The company has a proven

track record of delivering results and exceeding the expectations of our clients, which in itself is rewarding for both the business and the client. South Kensington and Chelsea continues to be a proven target area for families, professional couples and investors."

Elisabeth Erard, who brings a wealth of lettings experience in Kensington and Chelsea remarks, "We are very excited by the opportunity of expanding our company to this area of London and look forward to developing professional relationships with clients and customers in the area, as well as offering support to the local community."

FEATURED PROPERTY IN CHELSEA

FOR SALE £ 1,600,000 GBP



CHELSEA GATE APARTMENTS,
CHELSEA SW1.

FOR FURTHER DETAILS,
PLEASE CONTACT
+44 (0)20 3867 7845.

A RARE RESIDENTIAL FEATURE LONDON'S BEST SWIMMING POOLS

One of the most exclusive and distinctive features that any Prime Central London residence can boast is usually invisible to outsiders. Most often concealed out of sight in a basement, or on the rooftops of the few homes that possess it, this coveted and rare London architectural embellishment, of course, is a swimming pool.

Whether the residential swimming pools that quietly adorn the most sumptuous London homes have become the ultimate status symbol, or are simply another well-appointed feature of luxurious living, having a private swimming pool in one's home, especially in Prime Central London, is the exception, not the norm.

This is primarily due to the design difficulties and prohibitive cost associated with installing a swimming pool in Prime Central London. Here, space is always at a premium and many listed homes are subject to strict building codes. The mere existence of a pool in a home in Mayfair or Chelsea and Kensington, in most cases, is only possible through feats of architectural design often verging on minor miracles. This stems from the challenges involved in creating beautiful and functional pools within some of the most sought-after properties in the world.

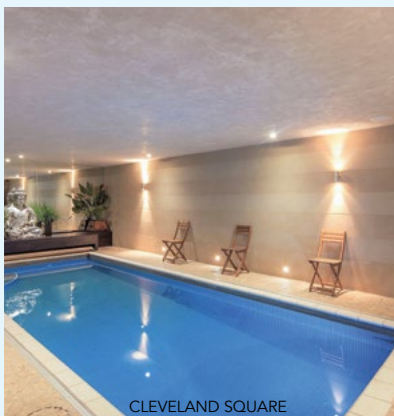
As a result, the opportunity to own or let a house in Prime Central London with a swimming pool remains limited to a small and exclusive group. After all, not many can take a dip in their very own heated pool beneath the glowing night sky, or complete an invigorating early-morning workout as the London commute gears up outside their walls.

The following examples of swimming pools, set in residences

offered for sale or let by Pastor Real Estate, highlight the sheer creativity that has gone into their design and construction.

CHEYNE PLACE, ROYAL HOSPITAL ROAD, CHELSEA Stunning Use of Natural Light

This pool showcases an ingenious set of architectural and engineering features that seamlessly incorporate the swimming area into the overall interior design of the home, while natural light illuminates the water.



CHEYNE PLACE

CLEVELAND SQUARE, BAYSWATER, LONDON Classic Indoor

This private indoor pool situated on the lower level of this stunning residence on the charming Cleveland Square, exemplifies a more conventional style.

THE LANCASTERS, BAYSWATER, LONDON Sleek Lap Pool

This pool's design perfectly melds form and function, with clean lines, glossy walls and recessed lighting, and is complemented by a state-of-the-art gym and steam room. All of these features are conveniently accessible to

any resident who cares to work out at their own convenience, regardless of whether the rest of London sleeps or conducts its regular business.

ONE KENSINGTON GARDENS, LONDON Olympic Style Training

With its spare layout and sleek contours, this pool could easily serve as a regulation size Olympic style training pool forming part of the development's world class spa facilities. A private fitness centre, sauna and steam room combined with one of the longest pools in London create a facility that certainly rivals the most upscale health clubs.



CHEYNE PLACE

CHASE AWAY THE WINTER BLUES THINGS TO DO IN JANUARY IN LONDON



Skiing at Chel-Ski

For ski and snowboard lovers too busy to schuss down Alpine pistes, the next best thing awaits in the heart of Chelsea. London's largest indoor ski centre, Chel-Ski claims to be "where London meets the mountains." Suitable for both beginners and advanced skiers or snowboarders, Chel-Ski's state-of-the-art indoor slopes and expert instructors will help you imagine yourself in the fresh mountain air.

Learn more at: www.chel-ski.uk

Once the Christmas lights have all been taken down, London offers several exciting diversions to ward off the January blues.

Burns Night Celebrations

Every 25th of January, Britain commemorates the life of one of Scotland's greatest poets, Robert Burns. Whisky tastings are a customary way to celebrate this occasion. To join in the festivities, head to one of Prime Central London's premium whisky bars. At Mayfair's **Connaught Bar**, revellers can experience aged single malts suitable to even the most demanding palate. The eccentric **American Bar** at the Stafford Hotel offers an impressive array of Scottish whiskies. Finally, amidst the sleek décor of Brown's Hotel's **Donovan Bar**, whisky aficionados can toast Burns' legacy with 17 single malts.

Find out more at:

www.the-connaught.co.uk
www.thestaffordlondon.com
www.roccofortehotels.com

Lumiere London 2018

Surely, there could be no better antidote to the long winter nights than Lumiere London 2018. This stunning light festival will feature the contributions of over 40 artists from across the UK and around the globe. From 18th-21st January, ingenious light displays will transform some of London's most iconic buildings, architectural sites and streets into a sparkling nighttime art exhibition.

Discover more at:

www.visitlondon.com/lumiere

SADDLE UP FOR THE OLYMPIA HORSE SHOW

First held in 1907, the Olympia Horse Show has long constituted an anticipated event on London's sporting calendar. In the past, formally dressed members of the nobility attended the iconic equestrian meet, which was held in a setting adorned with chandeliers and floral arrangements. Celebrating a staple of British tradition, the horse show retains a glamorous sense of prestige and is enjoyed by eminent guests, including the Duchess of Cornwall. Today, it is an event that is open to everyone, from the most avid horse enthusiast to those that are simply curious to see what 'carriage driving' entails.

Just a short distance from Prime Central London, the Olympia Exhibition Centre is set to welcome approximately 90,000 guests from 12th-18th December for a week of competitive riding and equestrian displays, as part of the most celebrated event of its kind in the UK.

Indeed, it is the only horse show in the country to host all three FEI World Cup Qualifiers: dressage, show jumping, and



carriage driving. With the hope of qualifying for the World Cup, competitors will put their skills to the test in front of over 7,500 spectators.

The Olympia Horse Show 2017 will also see a range of display acts to complement the week's competitions. For the first time in the event's history, the Chilean Huasos – famous Chilean performance riders – will take to the arena in traditional attire, staging their skills which demonstrate a harmonious relationship between man and horse. Another of the event's highlights will see the famous jockey, Frankie Dettori, compete in a show jumping event. Horses will not be the only animals to take to the arena, however: dog agility competitions will bring canines into the spotlight on the Friday afternoon.

Day tickets to the event start from £20, while top-priced tickets start from £40.80. www.olympiahorseshow.com



A MEMORABLE COUNTDOWN: NEW YEAR'S EVE IN MONACO

New Year's Eve is a time for festive celebrations to be remembered and hopeful resolutions that are sure to be forgotten. Spirits are high, as fireworks light the night's sky to symbolise the start of a new chapter. For discerning travellers with a penchant for luxury, the Principality of Monaco beckons on New Year's Eve, promising fine restaurants, indulgent hotels, and a busy programme of events for families, friends, and couples alike. Follow one of these three itineraries for a memorable countdown to 2018 in Monaco.

AN EVENING AMONG FRIENDS

For groups of friends, Monaco guarantees an elegant night of revelry. With a number of chic bars, nightclubs, casinos, and hotels on offer in the Principality, you are sure to usher in the new year in style.

If relaxation is in order after a few too many indulgences at Christmas, start your day at the Thermes Marins Monte-Carlo – a tranquil spa in the heart of town. From the heated saltwater swimming pool, which boasts massage jets to help visitors unwind, admire a panoramic view of the Mediterranean Sea. The spa's large sun terrace looks out over Port Hercules and benefits from a Jacuzzi. End the experience with a table shower massage to rejuvenate fully before a busy evening.

For dinner, sample the famous cuisine at Nobu, set on the ground floor of the Fairmont Hotel. From the restaurant's scenic balcony, diners can admire views of three countries: Monaco, France, and Italy. Rivalling the scenery for the attention of guests, the sumptuous menu, designed by renowned Chef Nobu Matsuhisa, dazzles the taste buds and delights the eyes.

AN EVENING FOR TWO

Whether it is the beguiling show of Christmas lights, the promise of high luxury, or the remarkable Mediterranean setting, the allure of Monaco makes it the perfect destination for couples.

After exploring the quaint streets of the Old Town in the afternoon for some shopping, make your way to the Belle Epoque room at the Hotel Hermitage for a romantic dinner for two. Be sure to book in advance, as the charm of the classic setting has established this restaurant as one of the finest in the Principality. A special dinner menu for New Year's Eve costs €520, and comprises of five courses, musical entertainment, and a raffle of Monegasque proportions.

To conclude the night, head to the Casino Square to watch the firework display at midnight and reflect on an unforgettable New Year's Eve in Monaco.

FAMILY FUN

Each December, Monaco is adorned with colourful lights and the Principality sparkles red and white. The festive mood brings the community together as a new year draws in. The iconic Casino Square is transformed into a winter wonderland, with a new theme each year; in 2016, a magical ski resort evoked a sense of escapism, transporting visitors to a picturesque alpine setting. Start your New Year's Eve by admiring the splendour of the decorations with your children.

Build up an appetite by exerting your energy on the ice rink by Port Hercules. The 1,000m² rink takes the place of the swimming pool in the Rainier III Nautical Stadium and lasts from early December until early March. For young children, there is a smaller rink too.

Lured by the scent of mulled wine and hot, hearty snacks, continue on to the Christmas Village. Traditional-looking wooden chalets offer regional products and authentic culinary specialities. For a panoramic view of Port Hercules, enjoy a ride on the Ferris wheel.

A favourite among the families of Monaco, Stars 'n' Bars is just a short walk around the harbour and beckons with its American-style décor and sumptuous menu. Most wall space is covered with sports memorabilia; there is even a full-sized Formula One car on display to entertain your kids while you enjoy a well-deserved drink! To mark the occasion, Stars 'n' Bars will treat guests to a firework display at midnight, so wrap up warm and enjoy the show.



VISIT THE NEW PASTOR IMMOBILIER OFFICE

Pastor Immobilier invites you to discover the comprehensive range of property services available at our new office.

Come and meet the Pastor Immobilier team at:

Le Formentor,
27 avenue Princesse Grace,
MC 98000 Monaco
T +377 97.70.20.70
F +377 97.70.20.71
E contact@pastor-immo.mc
www.pastor-immo.mc



FOR SALE: LE MIRABEAU

€14,800,000

Entre les jardins du Casino et les plages du Larvotto, avec piscine, pool house, fitness et service de sécurité assuré 24h/24. Très bel appartement de 178m² aux finitions de très grande qualité, il dispose d'une vaste terrasse et jouit d'une magnifique vue panoramique sur la mer, le Cap Martin, le Casino et ses jardins. 1 grand parking et 1 cave. Brochure sur demande.

In between the Casino gardens and the Larvotto beaches, with swimming pool, poolhouse, gym and 24/24h security service. A superb apartment of 178sqm with high-quality finishes, it offers a large terrace and enjoys stunning panoramic views of the sea, Cap Martin, the Casino and its gardens. 1 large car park and 1 cellar.



FOR SALE: WHITE HORSE STREET, MAYFAIR, W1J

£3,250,000

Dual Aspect Reception Room | Bespoke Kitchen | Large Master Suite | Roof Terrace

A 3 bedroom maisonette with a bright south facing roof terrace. Located in the heart of Shepherd Market, this attractive property is set over 3 floors and has been finished in a contemporary style to an excellent specification. Virtual Freehold.



FOR SALE: DERBY STREET, MAYFAIR, W1J

£6,250,000

Delightful Mayfair townhouse located in a charming cobbled street, moments from Park Lane. Extending to 2,700 sq ft (251 sqm) and set over 6 floors, this impressive property offers fantastic entertaining and living space for a family. The house comprises of an entrance hall, 2 reception rooms, drawing room, 1 master bedroom suite with dressing room, 2 studies, 3 further bedrooms, 2 bathrooms and a large roof terrace with skyline views of Mayfair. Freehold.

FOR SALE: SHEPHERD MARKET, MAYFAIR, W1J

£6,500,000

Mixed-Use Building | Retail Unit & 3 New Apartments | Virtual Freehold

A newly developed, fully let mixed-use building with retail unit and 3 brand new 1 bedroom apartments on the upper floors. Nestled in the heart of Shepherd Market the apartments have been developed to an exacting standard. Virtual Freehold.



TO LET

ARLINGTON HOUSE, ST JAMES'S SW1
£ 1750 PER WEEK

2 Double Bedrooms | Prestigious Block | Quiet Location | 24 Hour Concierge | Communal Gardens Overlooking Green Park | Bespoke Furnishings

TO LET

GLOUCESTER SQUARE, HYDE PARK W2
£2250 PER WEEK

3 Double Bedrooms | 3 Bath/Shower Rooms | Private Garden Square | Impressive Dual Aspect Reception Room | Luxury Eat-In Kitchen



FOR SALE: THE PENTHOUSE, KENSINGTON GARDENS SQUARE, BAYSWATER W2

£7,195,000

Triple Aspect Penthouse | Panoramic Views | Direct Lift Access | 2 Designated Underground Parking Spaces | Underfloor Heating | Air Conditioning | Multiple Roof Terraces | 24 Hour Concierge | Close Proximity to Bakerloo, District, Circle Lines & Crossrail

A unique opportunity to acquire an exclusive, 3 bedroom penthouse apartment within an outstanding development consisting of 31 units. 50 Kensington Gardens Square is one of London's most up and coming locations sitting within the heart of Bayswater W2, just moments away from Hyde Park. Additional 2 & 3 bedrooms apartments with parking facilities are also available ranging from £1,990,000 to £3,640,000.

TO LET

HILL STREET, MAYFAIR W1
£960 PER WEEK

2 Double Bedrooms | Close to Berkeley Square | Concierge | Passenger Lift | Stylish Interior Design | Excellent Storage

TO LET

MARYLEBONE LANE, MARYLEBONE W1
1350 PER WEEK

3 Double Bedrooms | 5 & 6th Floor Duplex | 2 Roof Terraces | Close to Amenities & Transport | Comfort Cooling | Wood Flooring

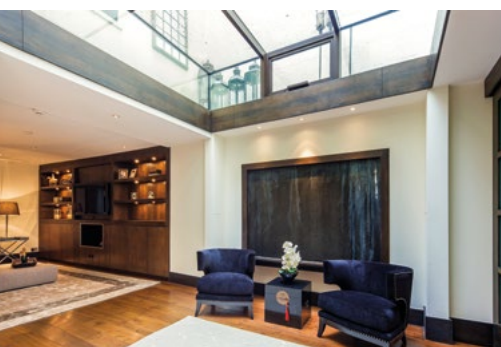


TO LET: QUEEN STREET, MAYFAIR W1

FROM £4,500 - £7,500 PER WEEK

Two & Three Bedrooms | Unrivalled Luxury | Bespoke Interiors & Furnishings | Concierge | Inclusive of Services & Utilities

An exquisite collection of homes in the heart of Mayfair whose residents have access to a private members' club, bar and restaurant occupying the ground floor of the same building. The apartments in this discreet period building are perfectly located to offer easy access to the finest shops, restaurants & amenities in this sought after destination. Residents benefit from daily housekeeping, room service and a dedicated concierge service. These wonderful homes away from home are available for long let inclusive of all services and utilities.



FOR SALE / TO LET: CLEVELAND SQUARE, BAYSWATER W2

£5,950,000 OR £3,975 PER WEEK

4 Bedrooms | 2 Reception Rooms | 4 Bathrooms | Access to Private Garden Square | Swimming Pool

This beautifully refurbished apartment benefits from its own front door and is conveniently located in close proximity to Hyde Park. Spanning 3,852 square feet, the property offers an exceptionally versatile entertaining space with three/four bedrooms, private swimming pool and access to one of London's coveted garden squares. The apartment offers exceptional accommodation and is ideal for entertaining with sumptuous furnishings complementing the stylish tasteful décor.



TO LET: BRUTON PLACE, MAYFAIR W1

FROM £850 TO £1350 PER WEEK

Newly developed 1 & 2 bedroom apartments on a quiet Mayfair mews off Berkeley Square moments from Bond Street and Mount Street. These beautifully presented apartments are finished to a high specification to include cedarwood robes to the bedrooms, underfloor heating, solid wood flooring to the halls and reception rooms, luxury tiled bathrooms and fully fitted kitchens with high quality appliances. The properties have been tastefully decorated throughout to provide smart stylish living space in a sought after Mayfair location.

PRICE REDUCTION



TO LET: QUEEN STREET, MAYFAIR, W1J

£76.50 PER SQ FT

Executive Office Suite | Oak Flooring | Air conditioning | High Ceilings | Private Balconette

Excellent office suite within a charming newly refurbished period building located within walking distance of Hyde Park & Green Park. The offices integrate period features and excellent natural light with mod cons such as air-conditioning and Cat 5 cabling.

48 CURZON STREET

Pastor Real Estate,
48 Curzon Street,
MAYFAIR, W1J 7UL
T +44 (0)20 3867 7845
F +44 (0)20 3195 9596
E contact@pastor-realestate.com

PROPERTY MANAGEMENT



BARRY DALY
(MARLA)
Head of Property Management

INVESTMENT



CHRISTOPHER MITCHELL
BSc (Hons) MRICS
Head of Investment

DEVELOPMENT



FANNAR HARALDSSON
(MA ARCH, BA ARCH)
Head of Development

LETTINGS



SUSAN COHEN
(MARLA)
Head of Lettings



SPENCER TAFFURELLI
(MNAEA MARLA)
Lettings Manager



MEGAN SANDOW
(MARLA) Senior
Lettings Negotiator



SOFIE KOFOD
Lettings Negotiator



LOUIZA SYMEOU
Lettings Team
Administrator



CORINNA WINTJEN
Office Administrator

11 CURZON STREET

Pastor Real Estate,
11 Curzon Street,
MAYFAIR, W1J 5HU
T +44 (0)20 3867 7845
F +44 (0)20 3195 9596
E contact@pastor-realestate.com

SALES



DAVID LEE
Head of Sales



SEBASTIAN GREENWOOD
Senior Sales
Negotiator



SIMON GREEN
Senior Sales
Negotiator

8 ELYSTAN STREET

Pastor Real Estate,
8 Elystan Street,
CHELSEA, SW3 3NS
T +44 (0)20 3867 7845
F +44 (0)20 3195 9596
E contact@pastor-realestate.com

SALES

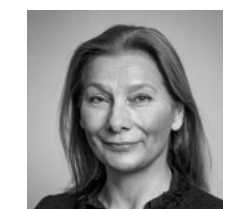


PHILIP COOK
Senior Sales
Negotiator

LETTINGS



ELISABETH ERARD
(MARLA)
Senior Lettings
Negotiator



KATY BIRCH
(MARLA) Senior
Lettings Negotiator



LONDON | MONACO



Pastor Real Estate,
48 Curzon Street
Mayfair, W1J 7UL

T: +44 (0)20 3867 7845
F: +44 (0)20 3195 9596
E: contact@pastor-realestate.com

Lettings | Investment | Architecture | Consultancy
Commercial | Project Management | Property Management

Pastor Real Estate,
11 Curzon Street
Mayfair, W1J 5HU

T: +44 (0)20 3867 7845
F: +44 (0)20 3195 9596
E: contact@pastor-realestate.com

Sales |



Pastor Real Estate,
8 Elystan Street,
Chelsea, SW3 3NS

T: +44 (0)20 3867 7845
F: +44 (0)20 3195 9596
E: contact@pastor-realestate.com

Sales | Lettings



www.pastor-realestate.com

THE MAYFAIR
AWARDS 2017