

Advertisement

LONG ISLAND

ONLY IN NEWSDAY

## Rising seas endanger Long Island marsh bird habitats

WATCH NOW • 1:28

# 'It's not what it used to be, and it has the potential to be more'

Environmental groups are working to restore the coastal salt marsh to help specific wildlife survive and thrive. Credit: Rick Kopstein; Tom Lambui

By Tracy Tullis

[tracy.tullis@newsday.com](mailto:tracy.tullis@newsday.com)

Updated June 22, 2024

 [SHARE](#)



Saltmarsh sparrows build their tiny nests in the dense grasses of the marsh and hide them so well that Nicole Maher, who has been studying coastal wetlands and their inhabitants for nearly 20 years, has never spotted one on her own.

The sparrows are endemic to the marshes on the East Coast — they exist nowhere else in the world. But those habitats and the birds that depend on them are quickly disappearing, in part due to the effects of a heating planet, according to experts.

As seas rise, the salt marshes, already just fragments of the great expanses of wetlands that once fringed the shorelines, are becoming inundated by higher tides and storm surges, which are flooding out the sparrows' nests.

Advertisement

“With the loss of high marsh habitat and increased rate of flooding of our coastal marshes, these birds’ numbers are going down across their whole range,” said Maher, a senior coastal scientist at The Nature Conservancy in New York.

## WHAT TO KNOW

- **The habitats of Long Island marsh birds** such as the tiny saltmarsh sparrow are disappearing quickly, in part due to the effects of a heating planet.
- **As seas rise, salt marshes** where the sparrows nest are becoming inundated by higher tides and storm surges, which are flooding their nests.
- **The population of saltmarsh** sparrows has declined by 87% in the past 25 years along the East Coast, according to federal estimates.

CONTINUE READING



## MORE ON THIS TOPIC

[Mission to protect shorebirds gets help from young Long Islanders](#)

---



**'WE HAVE TO FIGURE OUT WHAT HAPPENED TO THESE PEOPLE'** More than 100 women have been found dead outside on Long Island since 1976. NewsdayTV's Shari Einhorn and Newsday investigative reporter Sandra Peddie have this exclusive story.

[Get more on these and other NewsdayTV stories](#)

## TOP STORIES



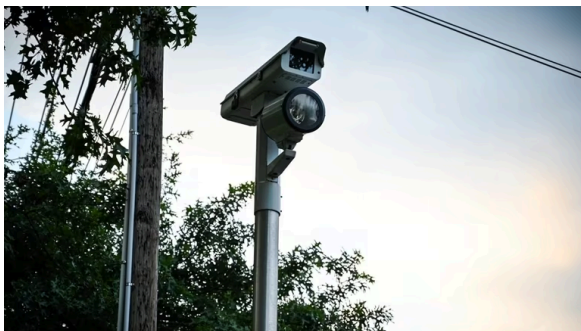
Sayville rallies around damaged Main Street merchants for Small Business Saturday

🕒 1m read



FDNY families celebrate lifesaving organ donations from fallen firefighters

🕒 2m read



Proponents hail ruling eliminating LI fees for red-light tickets

🕒 3m read



LI teen advances to Top 8 on 'The Voice'

🕒 1m read



ONLY IN NEWSDAY

## Conundrum for Christians: Ash Wednesday is also Valentine's Day

🕒 3m read



## Biggest LI restaurant closings of the year so far

🕒 12m read

### MOST POPULAR

Fight breaks out at crowded Smith Haven Mall, weapon recovered



ONLY IN NEWSDAY

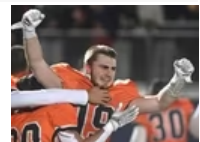
Suffolk's red-light camera program ends after officials fail to extend it



LI restaurant opens second location



Todaro, Carey come back to capture LI Class II crown

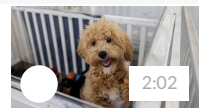


Sayville rallies around damaged Main Street merchants for Small Business Saturday

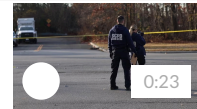


### LATEST VIDEOS

'We have no choice but to shut down.'



Police searching for hit-and-run driver



'We're just doing the best we can do'



'It's a very humbling and very emotional thing'



Daughter faces murder charge in stabbing of mother



0:28



**SPONSORED CONTENT**

## How the Nippon Steel Merger Could Revitalize U. S. Steel Plants [↗](#)

BY U.S. STEEL AS SEEN ON CFR

Could halting the Nippon Steel acquisition weaken U.S. manufacturing and supply chains? Here's what's at stake.

## Didn't find what you were looking for?

Search newsday.com



Advertisement

### Quick Links

- [About Us](#)
- [Subscribe](#)
- [Today's paper](#)
- [Email newsletters](#)
- [Newsday Live](#)
- [Careers](#)
- [Manage my account](#)
- [Mobile & TV apps](#)

### Advertising

- [Media Kit](#)
- [Brand 360](#)
- [Newsday Productions](#)
- [Newsday Connect](#)
- [Hometown Shopper](#)
- [Classifieds](#)
- [Public Notices](#)

[Contests](#)

[Archives](#)

## News

[Long Island](#)

[Sports](#)

[Opinion](#)

[Politics](#)

[News](#)

[Business](#)

[Towns](#)

[High school sports](#)

## Featured

[Funbook](#)

[Obituaries](#)

[Crosswords](#)

[Things to Do](#)

[Entertainment](#)

[Restaurants](#)

[Family](#)

[Travel](#)

[NextLI](#)

[Privacy Policy](#) | [Terms of service](#) | [Subscription terms](#) | [Your ad choices](#) | [Cookies Settings](#) | [California Privacy Rights](#) | [About Us](#) | [Contact Newsday](#) | [Reprints & permissions](#) | [Advertise with Newsday](#) | [Help](#)

Copyright ©2024 Newsday. All rights reserved.

