



PO Box 14168
Lexington, KY 40512-4168

At Humana, it is important you are treated fairly.

Humana Inc. and its subsidiaries comply with applicable Federal Civil Rights laws and do not discriminate on the basis of race, color, national origin, age, disability, sex, sexual orientation, gender, gender identity, ancestry, marital status or religion.

English: ATTENTION: If you do not speak English, language assistance services, free of charge, are available to you.

Call **1-877-320-1235** (TTY: 711). **Español (Spanish):**

ATENCIÓN: Si habla español, tiene a su disposición servicios gratuitos de asistencia lingüística. Llame al

1-877-320-1235 (TTY: 711). **繁體中文 (Chinese):** 注意：如果您使用繁體中文，您可以免費獲得語言援助服務。請致電

1-877-320-1235 (TTY: 711)。

Y0040_GHHLJDKEN_C



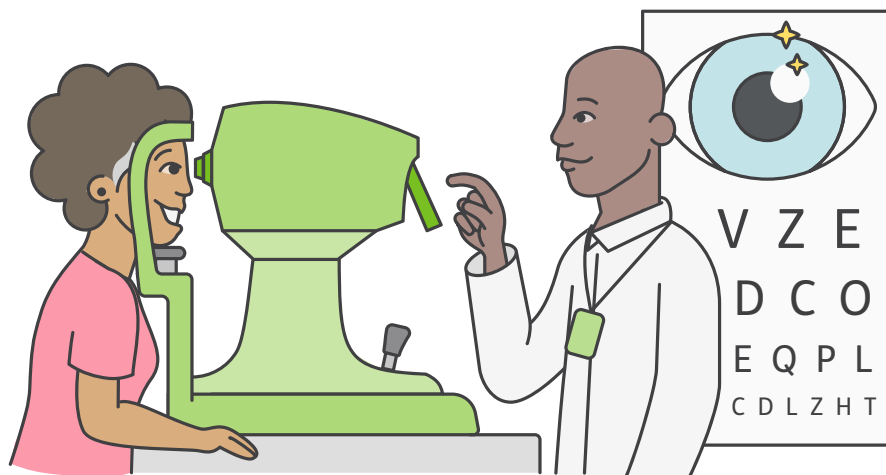
<FirstName> <LastName>

<Address line 1>

<Address line 2>

<City, State ZIP>

<LO-RES>



All eyes on protecting your vision



**Get your comprehensive eye exam
covered by your Humana health plan**

Humana®

Monitoring is key to preventing diabetes-related vision loss¹

Humana <and [Group Medicare name]> want to remind you to schedule your diabetic comprehensive eye exam. Diabetic retinopathy may get worse over time. Even if you are not yet experiencing symptoms, regular screenings may help you and your doctor make sure you get the treatment you may need to slow disease progression and help protect your vision.

Don't worry—you're covered

- This screening is included with your Humana health plan annually with a \$0 copay when you use an in-network eye-care specialist.
- You don't need a vision plan, and you don't need a referral.
- You may have your results on the spot.

With early- and advanced-stage diabetic retinopathy, regular eye exams may help you see a clear path forward

In addition to getting your screenings, you may help prevent vision loss by:¹

- Monitoring your blood sugar
- Keeping blood pressure and cholesterol under control
- Staying physically active
- Avoiding smoking and tobacco products



Make your appointment today—it's easy. Contact your doctor or call our dedicated scheduling team at <833-751-3210 (TTY: 711) Monday – Friday, 9 a.m. – 5 p.m., Eastern time.>

<To learn more, visit <URL>.>

Your Humana plan includes a \$0 copay for one comprehensive diabetic eye exam at an in-network provider per plan year. Any follow-up appointments, tests, diagnostic screenings to receive more definitive health information, or repeated screenings beyond those covered annually may incur additional costs. Please review your plan for further details.

Humana Vision Insurance covers this exam. If you don't have Humana Vision Insurance through EyeMed, this diabetic retinopathy exam may be covered by your medical benefits with an in-network provider. A refraction exam (which checks your general vision, commonly used to determine changes in vision requiring glasses or contacts) is not covered within your medical benefits. Ask your provider to bill your retinopathy exam to your medical benefit if you don't have Humana Vision Insurance through EyeMed.

Source

1. www.cdc.gov/diabetes/managing/diabetes-vision-loss.html