

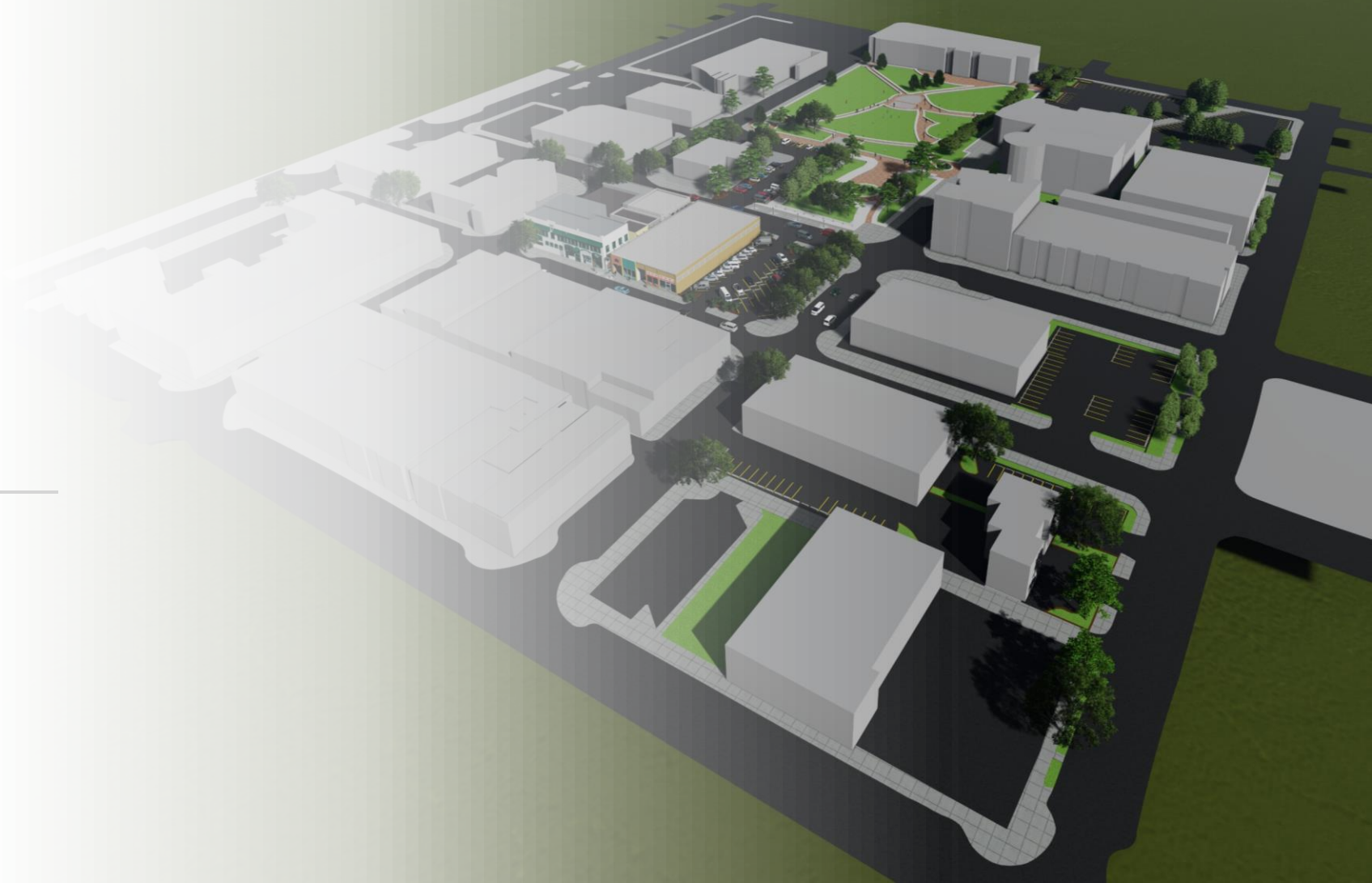


Sustainable Paradise Alley in Puyallup

Urban Design Studio 2/Pro. Ko
Wibowo

Behrang Zandi

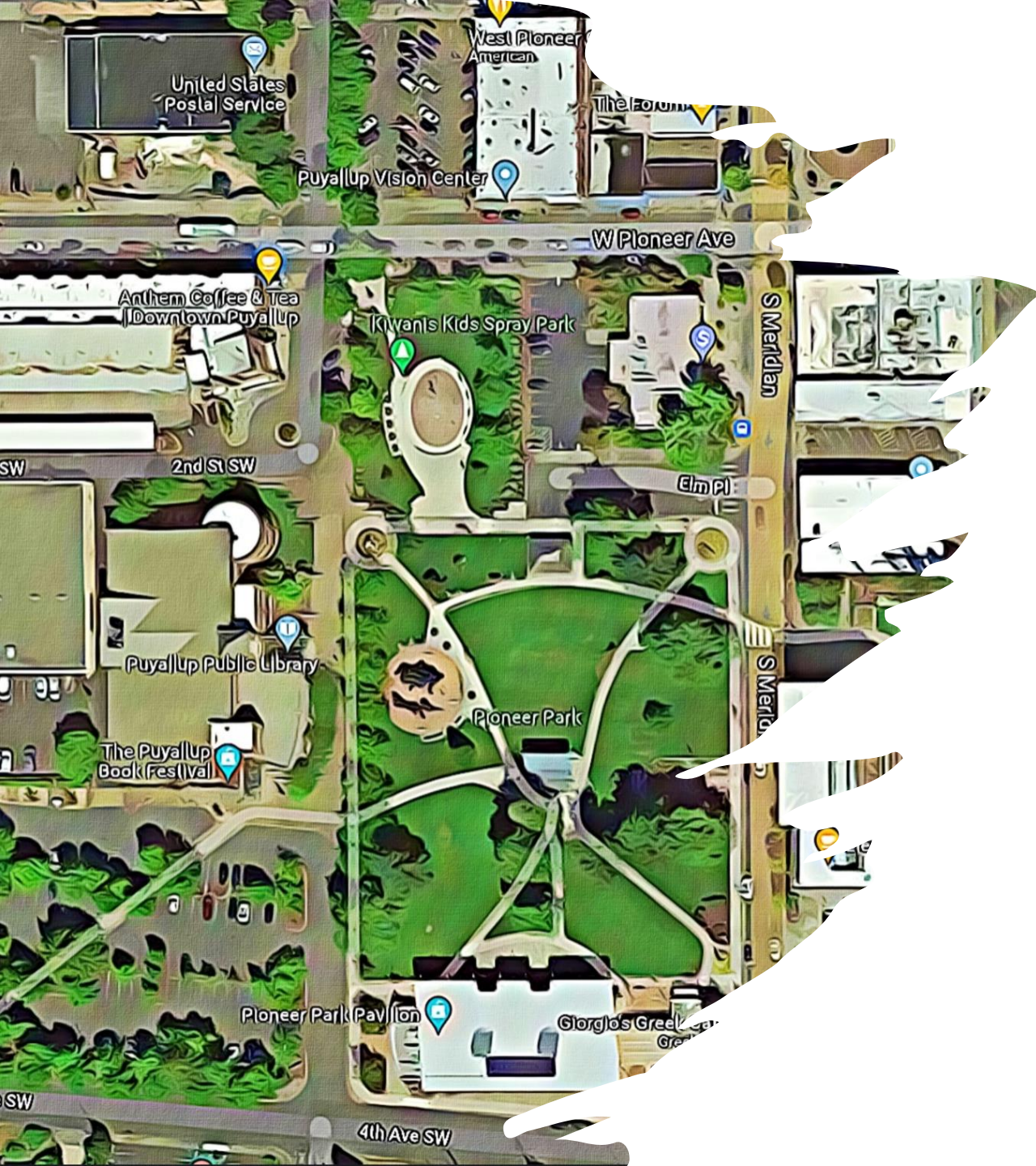
University Of Washington (Tacoma)



Research Site: Alley Activation Project City of Puyallup

- Situated in Downtown Puyallup
- Narrow alley (approximately 10 ft.W*143ftL)
- South of West Meeker St.
- North of Pioneer St.
- East of Southwest 2nd St. and the South Meridian
- Near West Pioneer Grill Restaurant and the old and historic Tribunal Building
- Near the Pioneer Park
- Near central bus station





Neighborhood Features: Class, Race and Age

- Middle Class
- Average age: 35 years
- Mostly White
- Old and historic businesses
- The land of Puyallup tribe



Urban Feature:

- Narrow
- Garbage disposal for businesses
- Backdoors to old buildings
- 4+ story buildings
- Windows overlooking the alley
- Gas, electricity, pipes, gasometer and power meter
- Gutters, manhole to swage
- Uneven height of the buildings



Problems

Narrow little day light

Dark at night

Dirty

Unsafe for women and children

No special view but privet properties

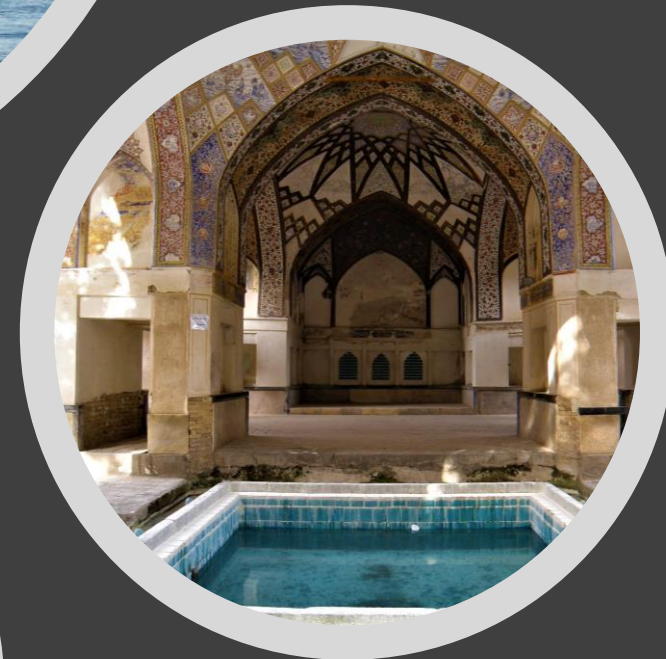
Rain and the flow of water, unfriendly for walking

A route for the local businesses to their backdoors

Near wide alleys which are walkable

Problem Question:





Inspired by:

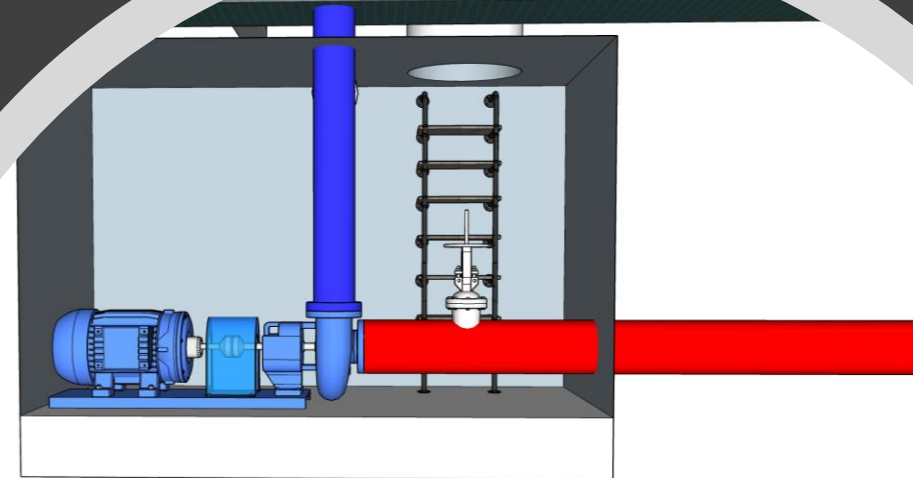
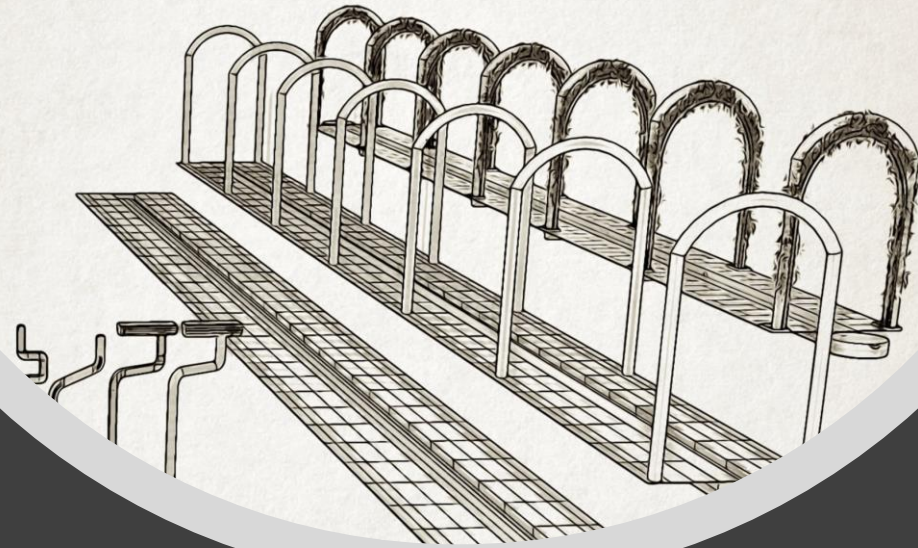
- Erma Paradise Garden Shiraz for water circulation
- Feen Bath Kashan for water basin
- And the sign of fish from the Puget Sound which is used by the Puyallup Tribe

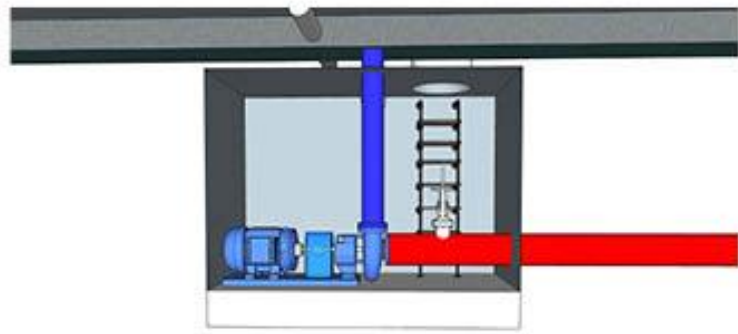
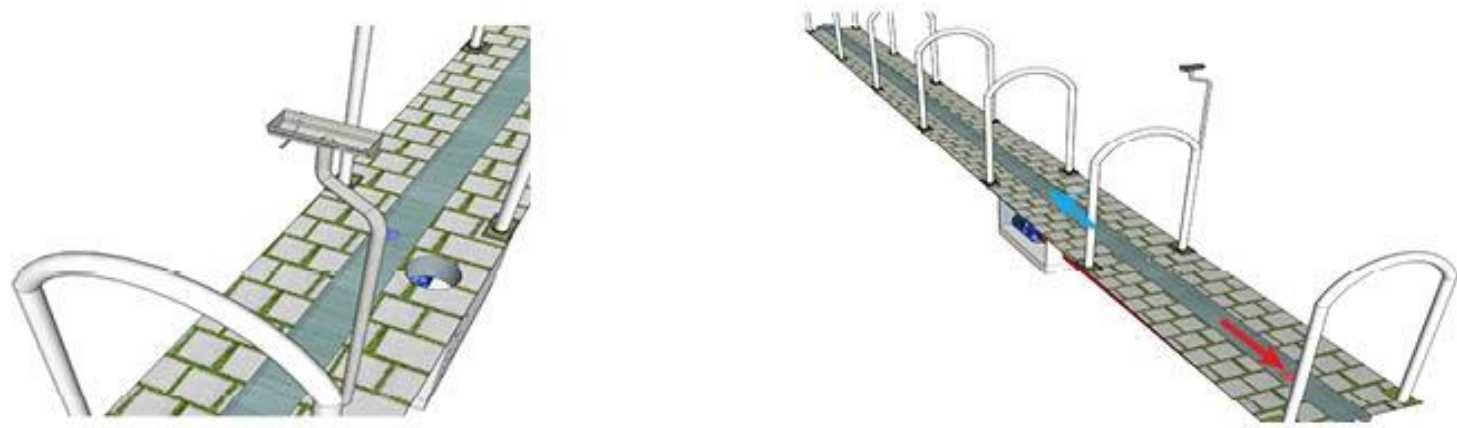
A 3D rendering of a field of dark grey question marks. In the center, one question mark is highlighted in a bright yellow color. The text "Solution 1:" is overlaid in white on the yellow question mark.

Solution 1:

Water

- Reusing rain water in the pool and connecting the gutters
- To save water and use it for both pleasant visuality and attraction
- And watering the plants







Garbage and sanitation



Greenery



Safety and Visibility

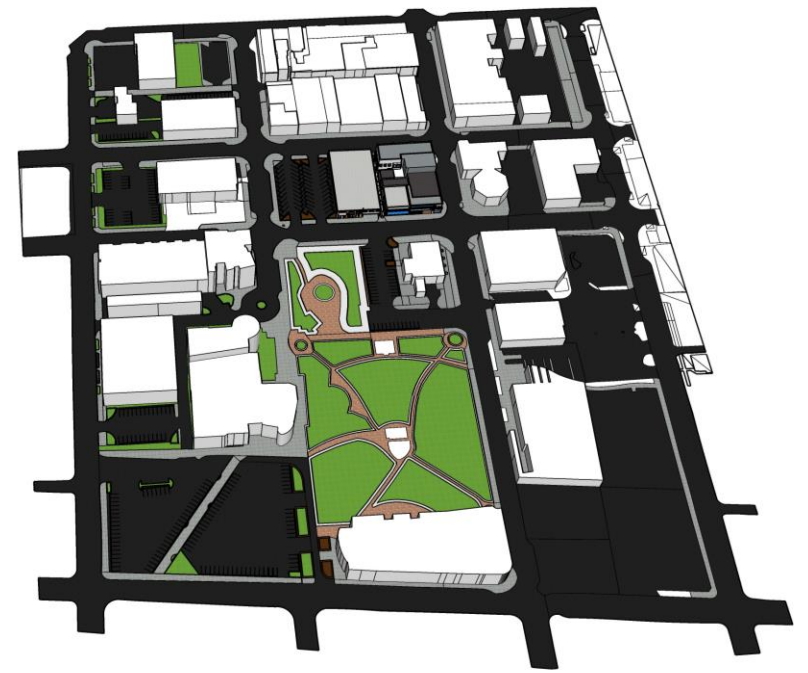
Walkability and accessibility





Contributing to the history and the urban design

Site Plan







TEST THEORIE BUILDING

