

# Kent Mahal

Where East Meets West

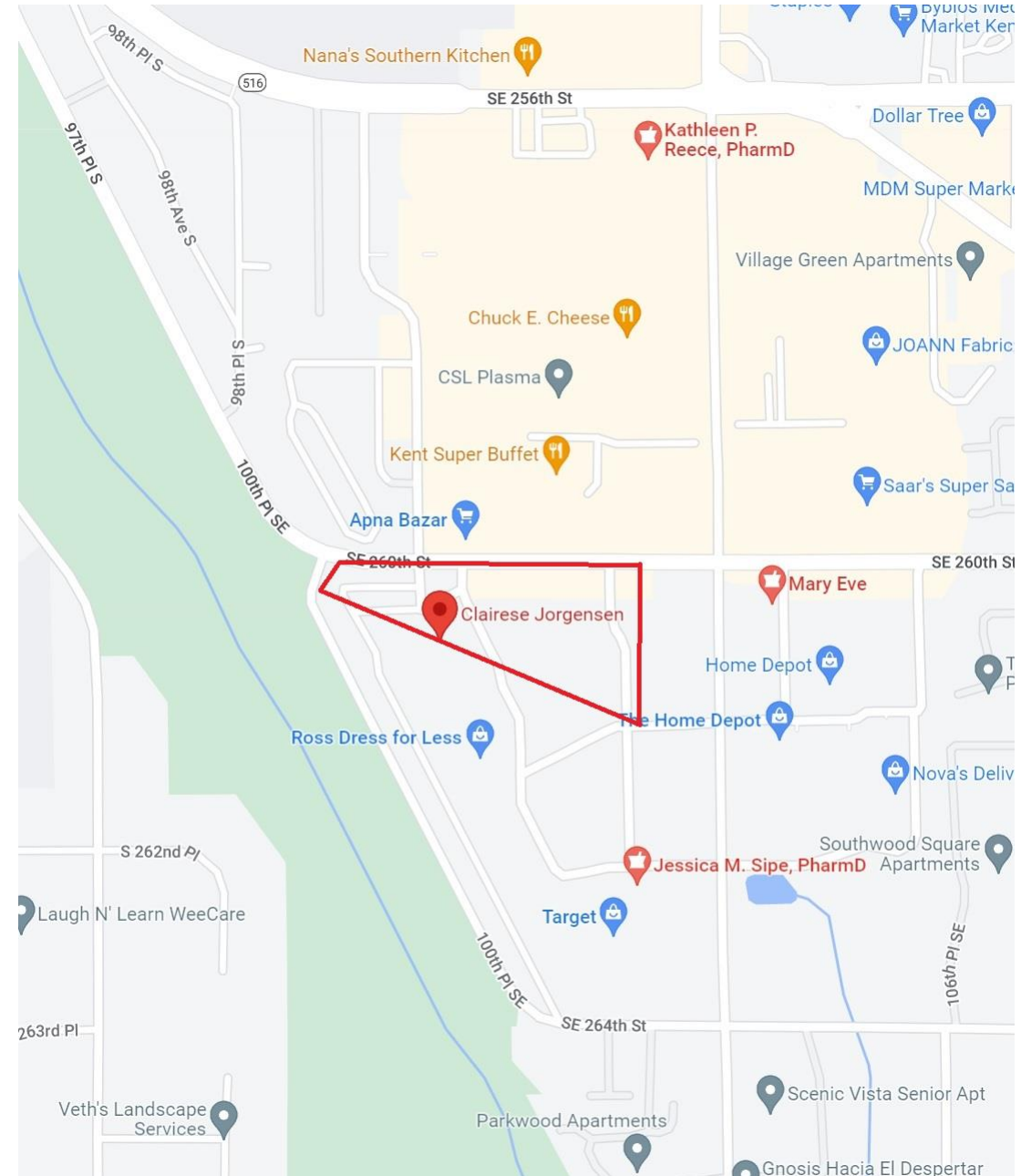
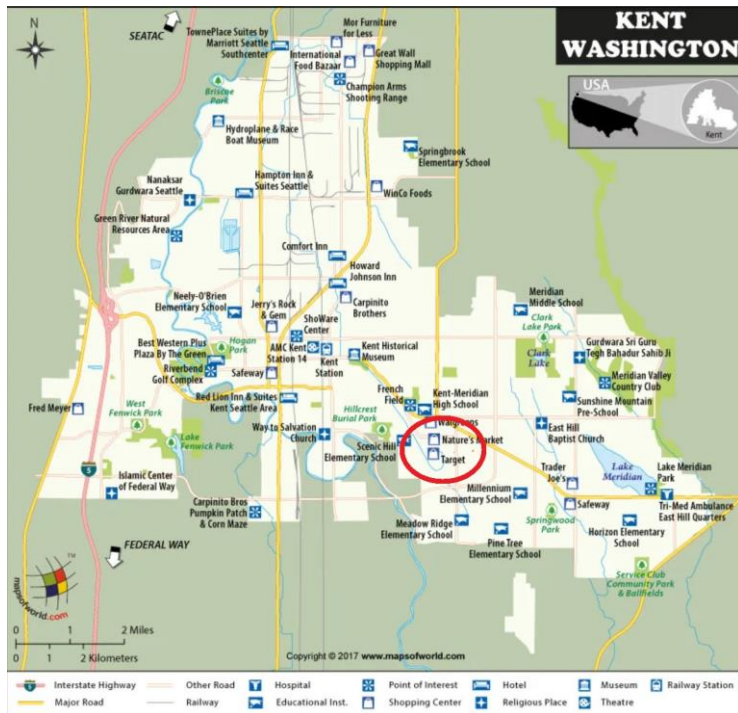
BEHRANG ZANDI

T UDE 440 A

11/17/2022

# Introduction: site location

- Vacant box is located on 104 Ave SE and 260 St Se of Kent in King County
- It is 67240 SF vacant area adjacent to shopping centers and grocery stores and some local shops and offices that serve the local population such as, the people of color, specially from Asia.



---

# Introduction: relationality

- The site is located in a dominantly immigrant neighborhood in Kent.
- Right across the street there are Kent Hindu temple, a few Asian restaurants and buffets such as, Kent Supper Buffet, Alexandria Mediterranean, and Maharaja Cuisine of India.
- There are local shops that are run or used by immigrants from Asia and the Middle East.

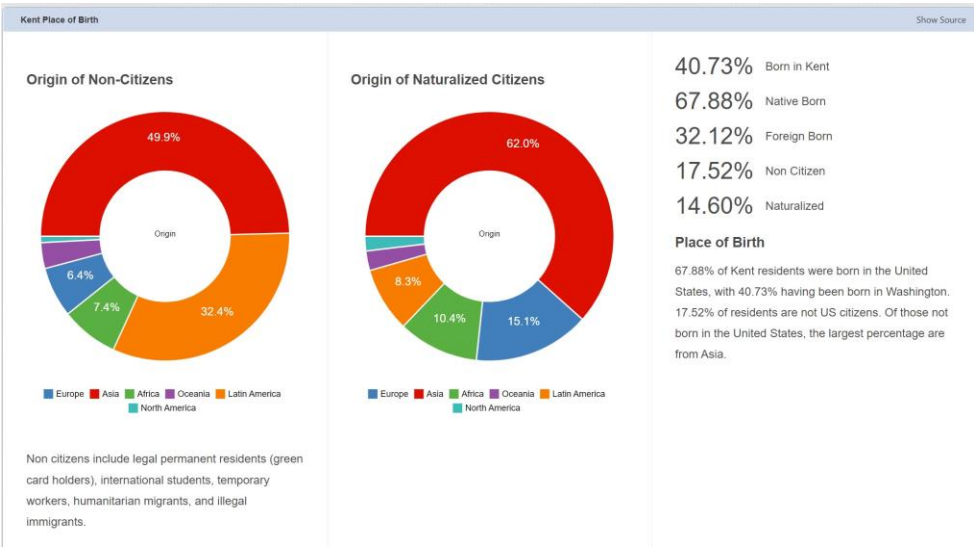
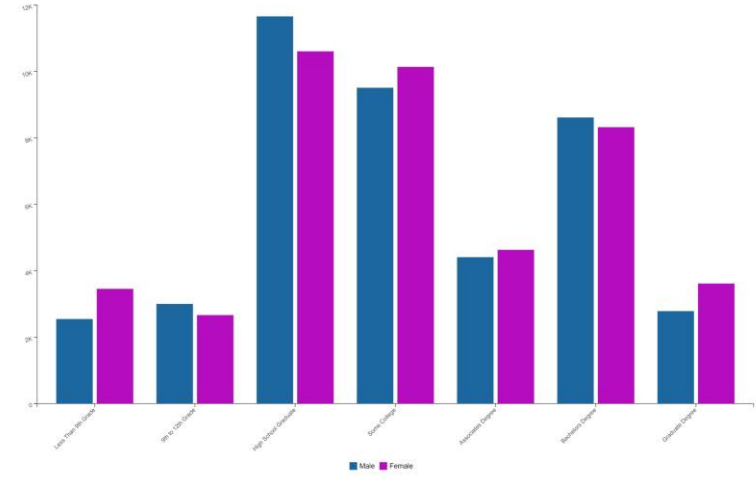


# The place “for whom?”

- Population: 134835
- Race or Ethnicity: only 45% White, about 22% Asian, more than 12% Black or African American, more than 2% Pacific Islander and Hawaiian

The majority are people of color

- Median income: \$ 42662



**Kent Median Age**

34.6 32.9 36.3

Total Male Female

**Kent Adults**

There are 97,946 adults, (14,099 of whom are seniors) in Kent.

**Kent Age Dependency**

Age Dependency Ratio

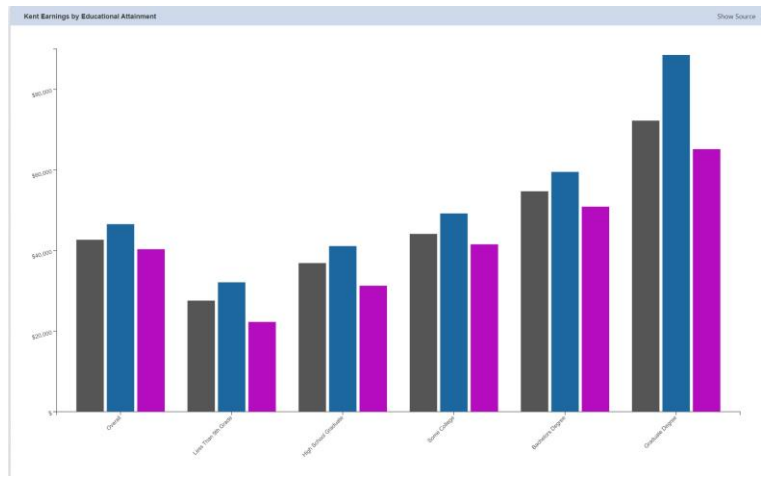
16.8 Old Age Dependency Ratio

38.3 Child Dependency Ratio

**Kent Sex Ratio**

Female 63,939 49.17%

Male 66,099 50.83%

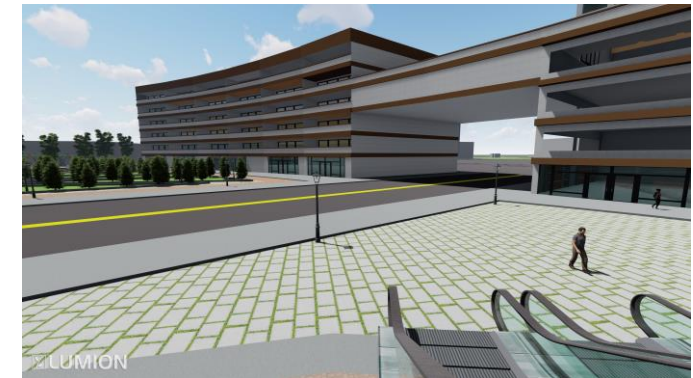
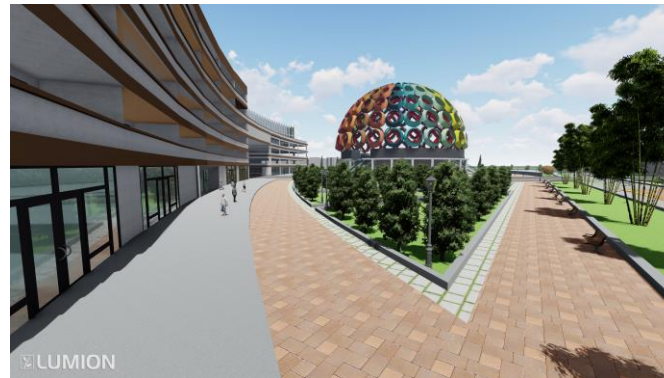
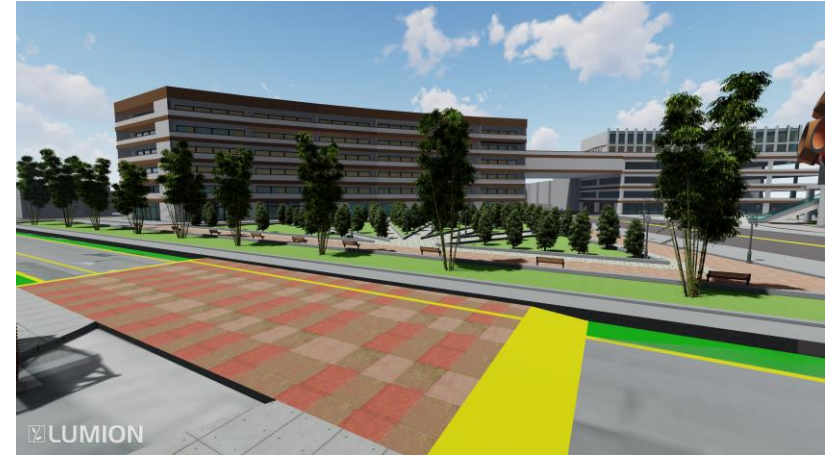


---

# Residential

- Need: affordable community of residential apartments

Solution: 6-story building, parking, commercial, roof-top café, and connected to the dome and the shopping center



Why? It is affordable for the working-class families  
It is close to free amenities for families with children, daily shopping and community gatherings.

---

# Commercial

- Need: affordability for local immigrant small businesses and start-ups  
Solution: multipurpose shops under the residential building with structured parking



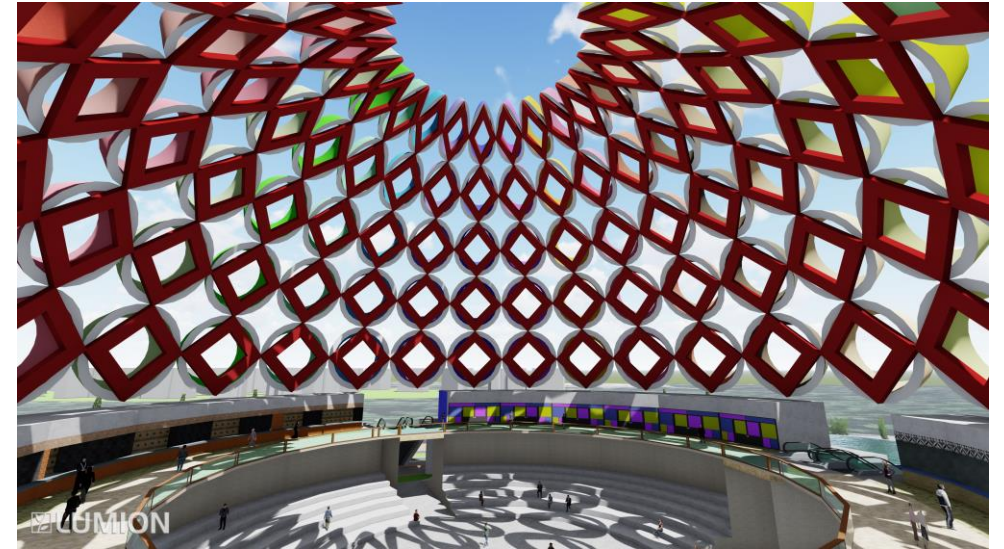
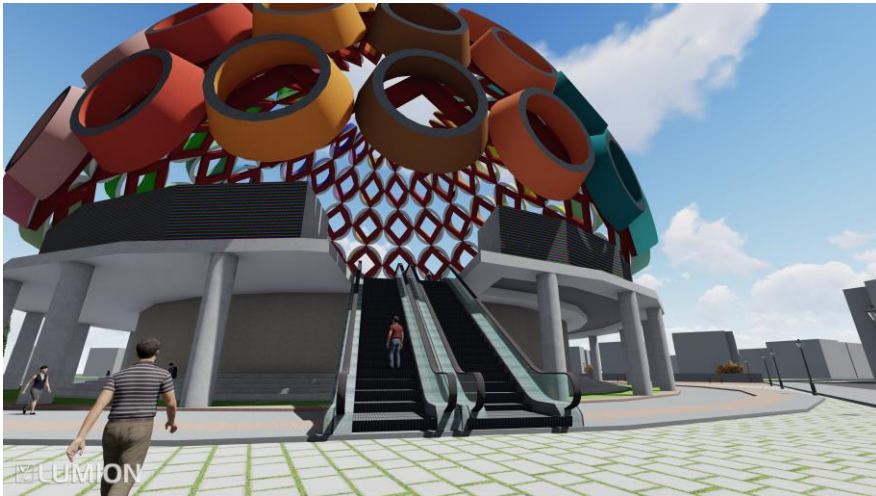
Why? Increasing mobility, facilitating accessibility for the families and the low-income residents, empowering business run by immigrants and people of color.

---

# Public Space

- Need: representation of immigrant's population
- Representation of Kent history as a landmark (hops planting)
- Binding the community of different race
- Helping the development of a sense of belonging to the city

## Solution photos

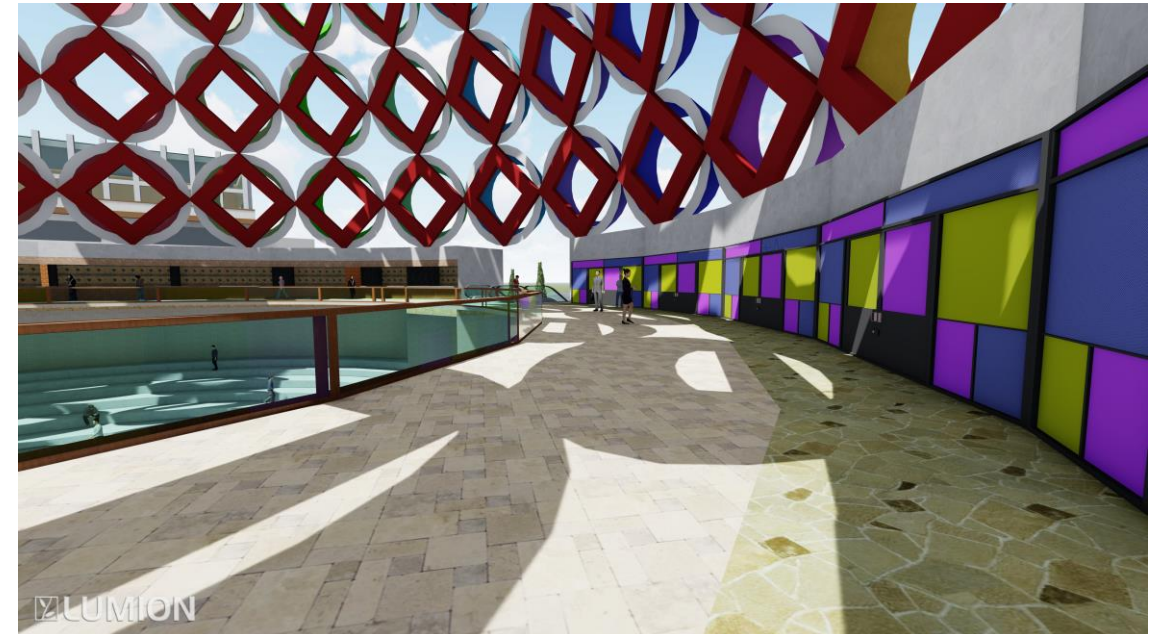
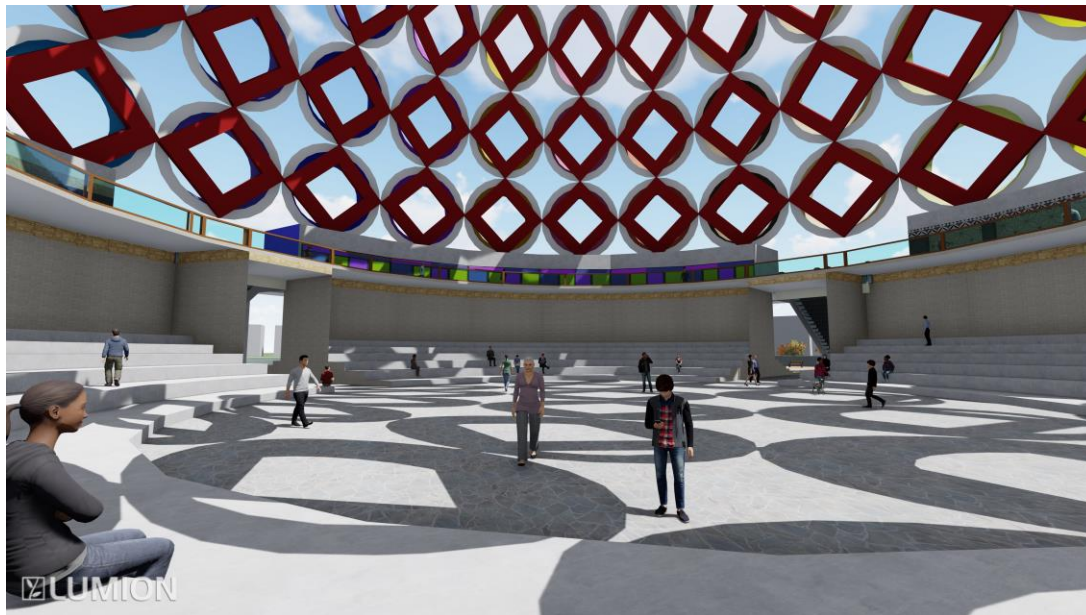
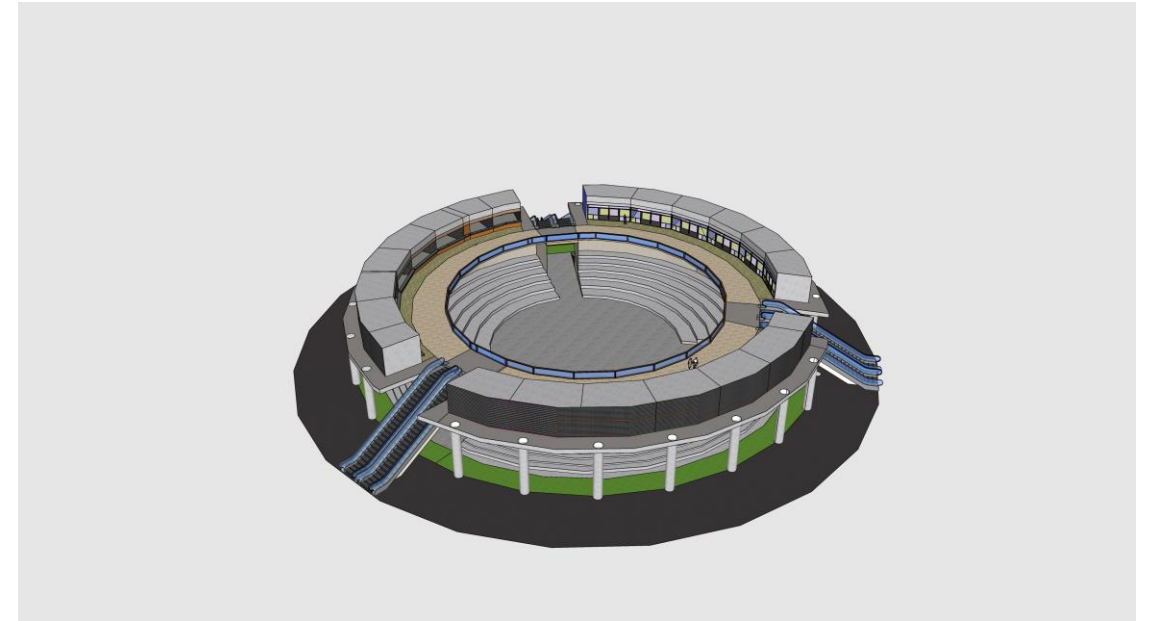


---

# Kent Dome Floor Plans

2<sup>nd</sup> floor: food-court and bar (including western and Middle Eastern food)

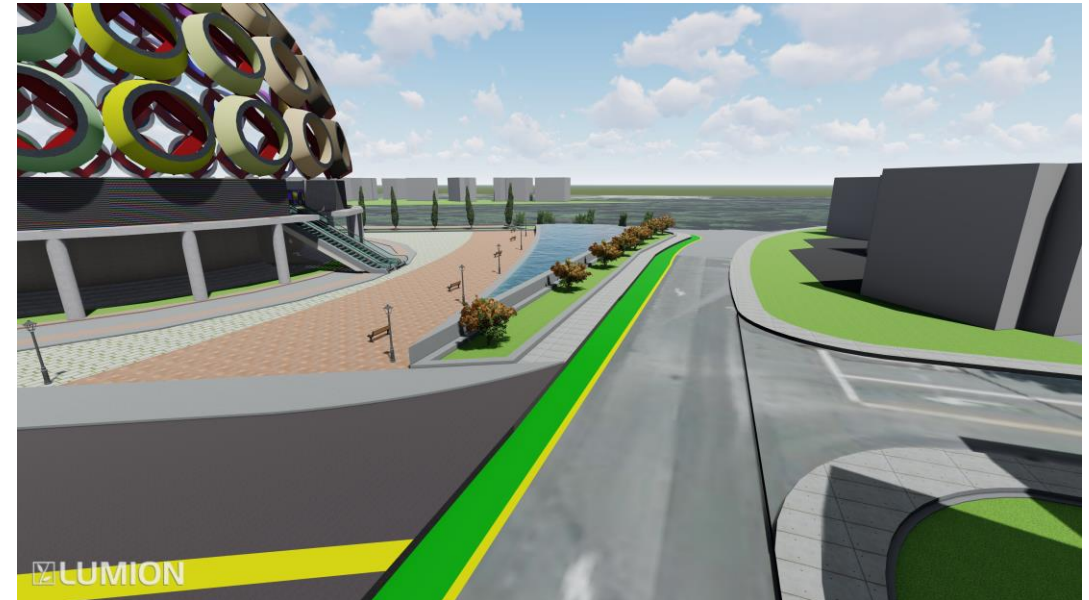
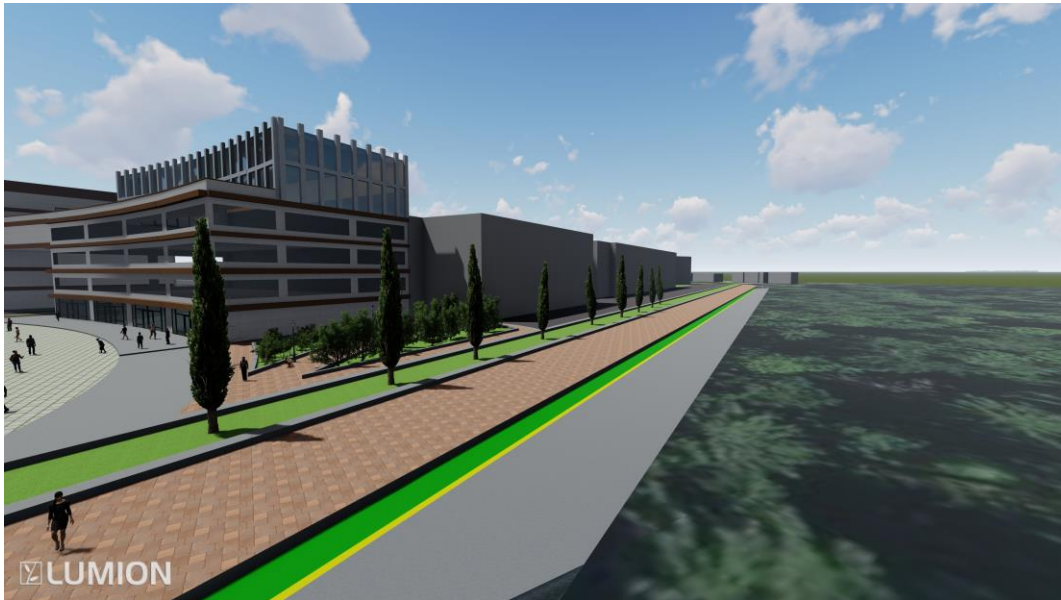
1<sup>st</sup> floor: place designated to live music and drama performance by local amateur performers





---

# 100<sup>th</sup> Pl SE



Dome will increase commuting to this blocked street, thus the side walk is expanded to 10 feet width with a bike lane and a one-way path for drivers.

---

# Passage to Kent Dome



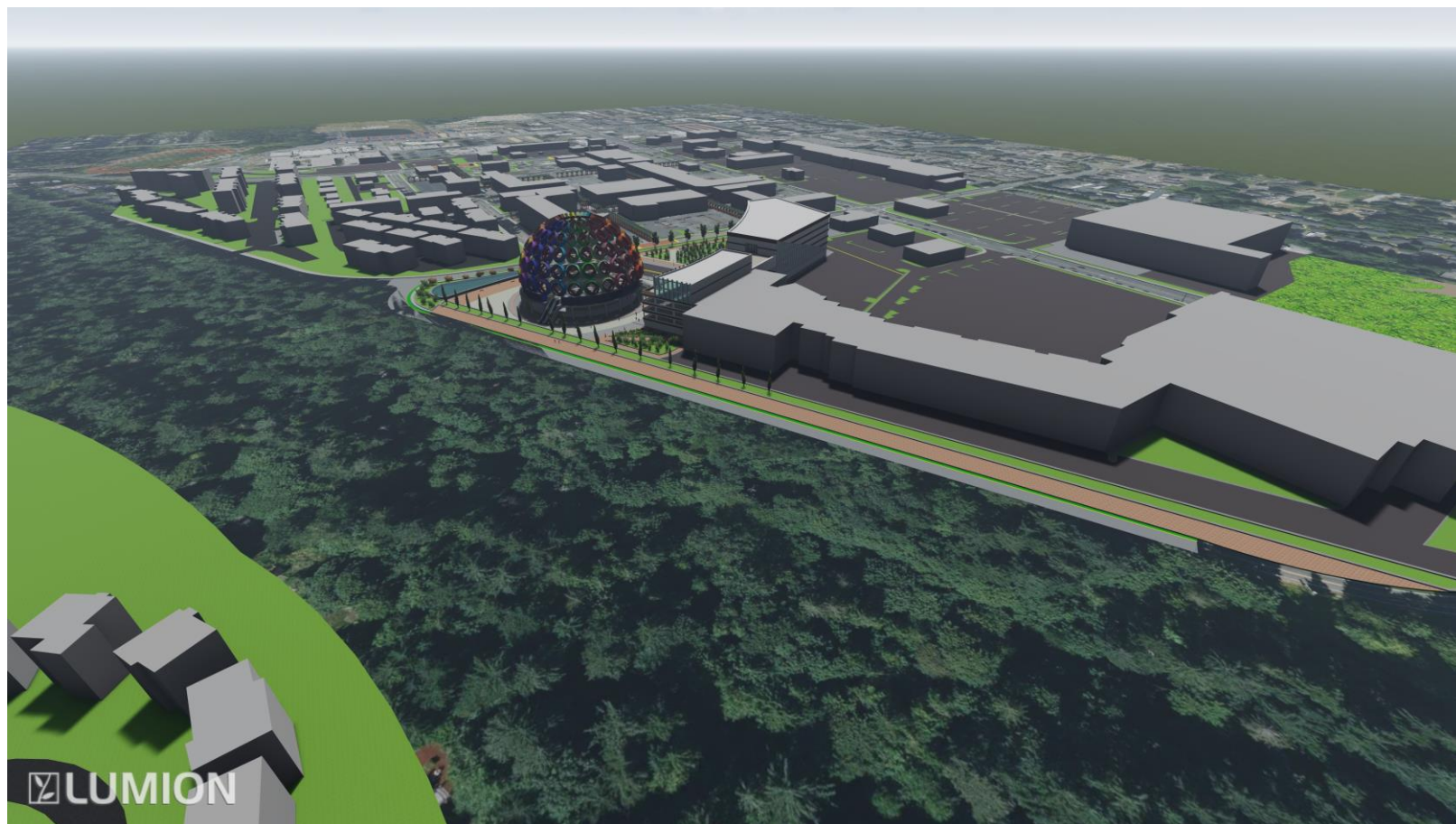
The path connects Meridian Highschool to dome and also activates large separated parking lots and facilitates walkability in the area



I used large ramps to decrease the car speeds and expanded the visibility for the safety of school children's passage

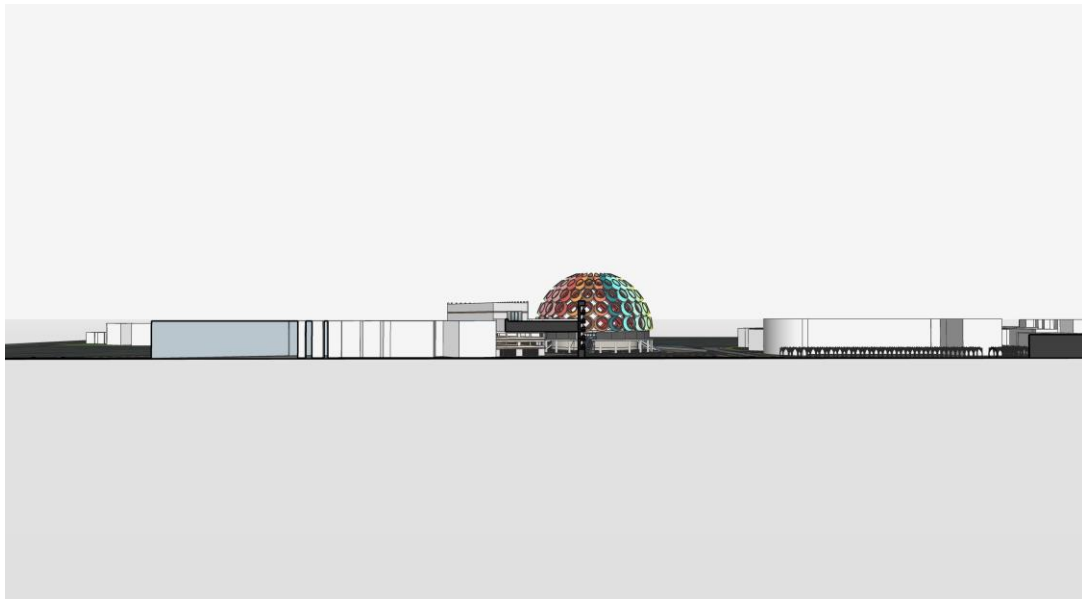
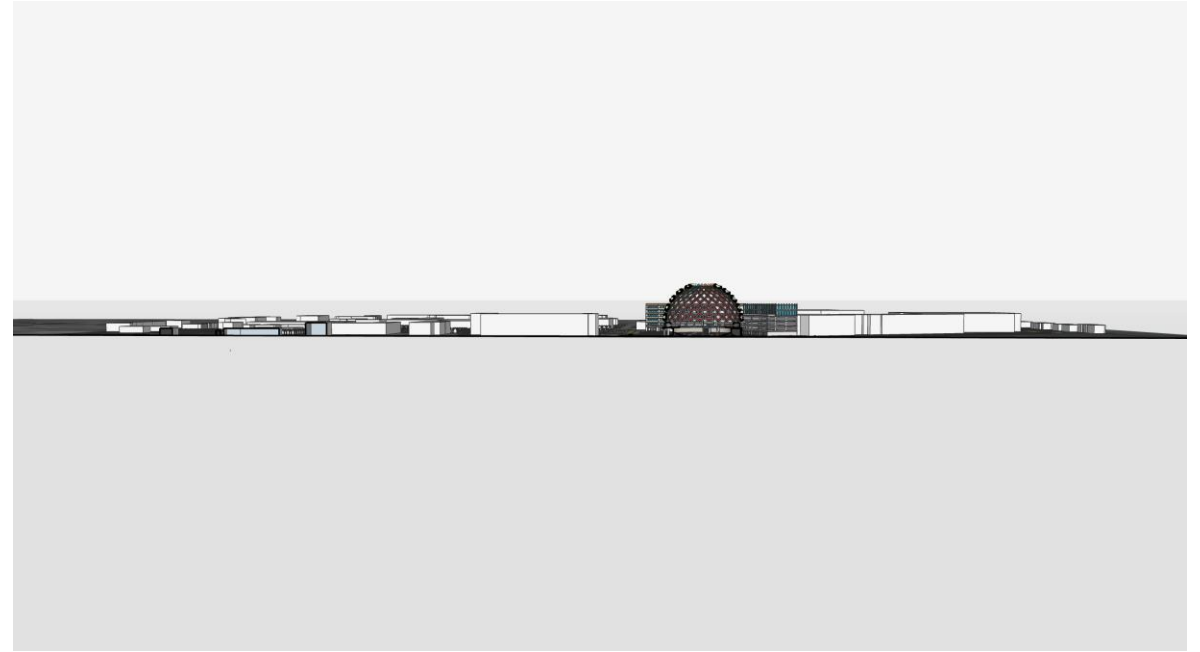
---

# Perspective view



---

# Cut Sections



Slides:



---

Slides:

