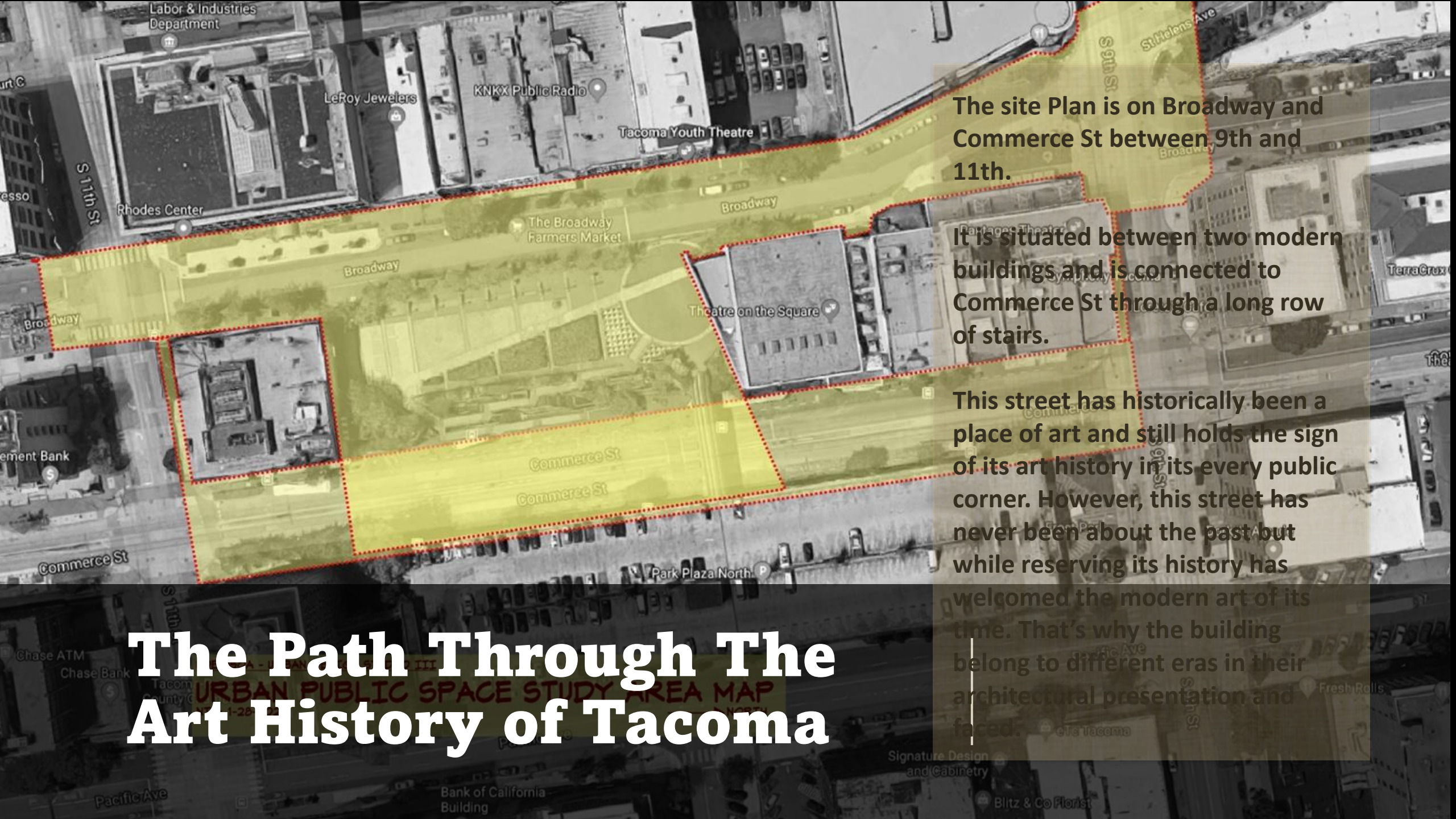




The future Memory

Urban Design Public Space Project – UDE 350A

Behrang Zandi



The site Plan is on Broadway and Commerce St between 9th and 11th.

It is situated between two modern buildings and is connected to Commerce St through a long row of stairs.

This street has historically been a place of art and still holds the sign of its art history in its every public corner. However, this street has never been about the past but while reserving its history has welcomed the modern art of its time. That's why the building belong to different eras in their architectural presentation and faced.

The Path Through The Art History of Tacoma

URBAN PUBLIC SPACE STUDY AREA MAP

Problem:

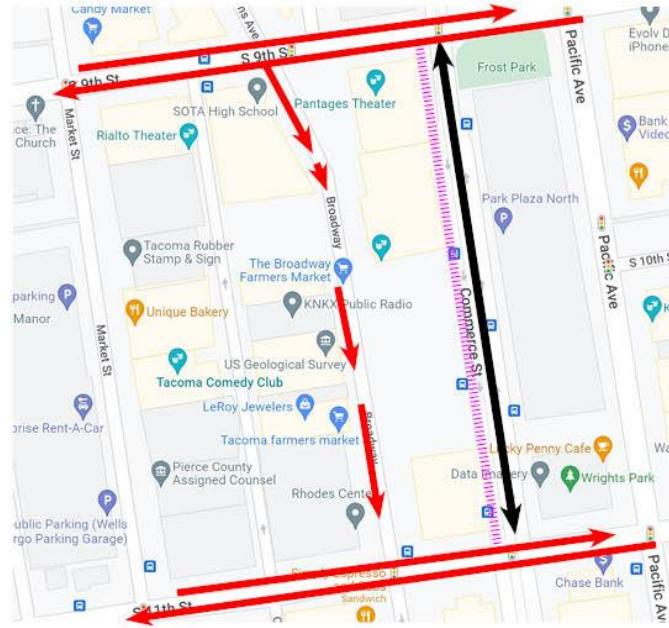
1. There is a physical disconnection of class: the division between Commerce mostly used by the working class and the Broadway which presents a high-end jewelry store and privatize buildings for those who can afford to enjoy and produce art.
2. The plaza is abandoned, and its use has no relevant to the characteristics of either of the two streets.
3. The plaza is also on the roof of public transit parking which it makes difficult to applying radical changes.



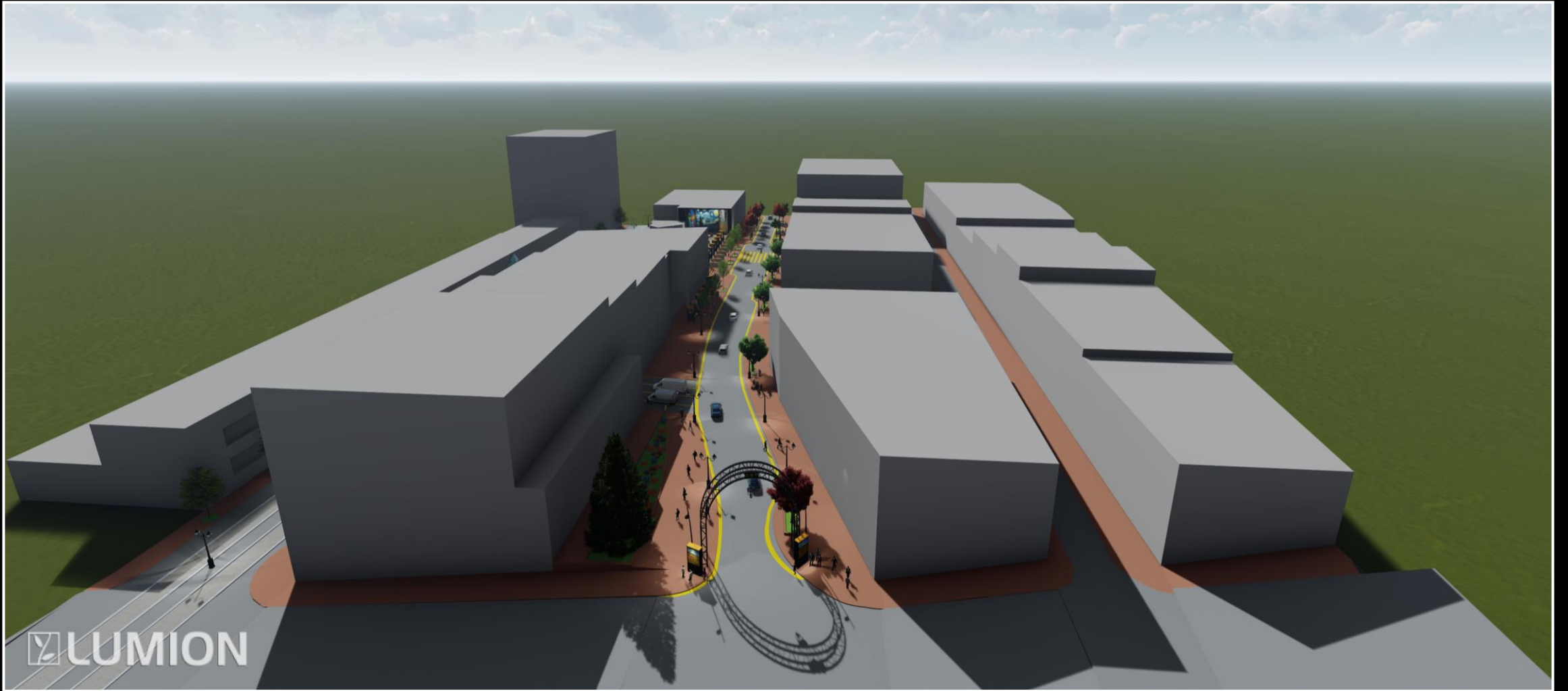
Let's make history for the future

1. To keep the historical trend and characteristic of the street we should build up a place that introduces the new era of art which is the digital art.
2. To overcome the sharp division between commerce and Broadway and facilitate the access of both the middle class and the working class the entire stair case of the plaza must change both physically and technically with some plan that will be inviting for the commuters of the commerce street to enjoy the top notch art presented on Broadway.
3. As Tacoma has always had a dialectical urban development with or against Seattle and Seattle has already been embracing different forms of digital art presentation in public and private spaces. Tacoma needs to keep carrying the flag of the future that is be the first city in Pacific North West that uses digital art/NFT in outdoor spaces. None fongable token

Proposed Road Plan

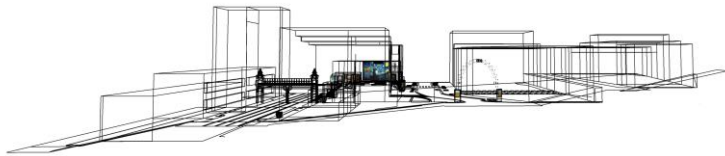
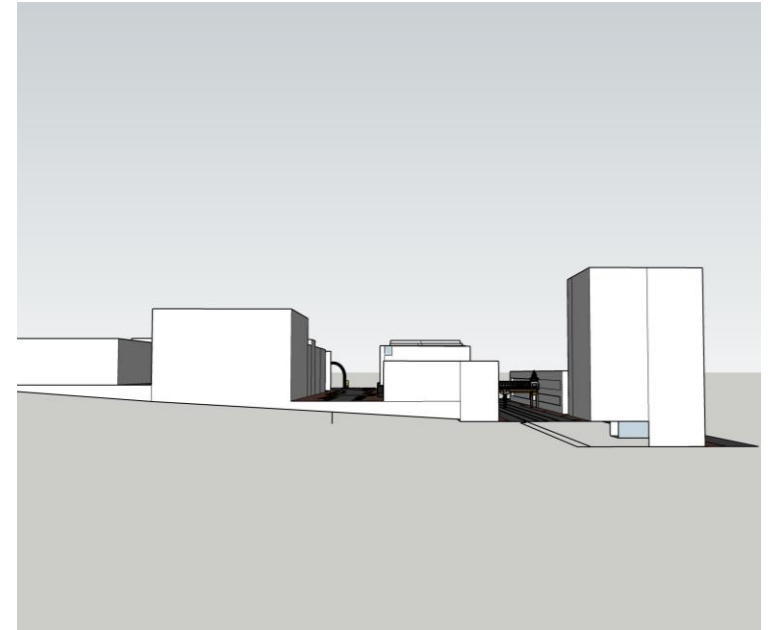
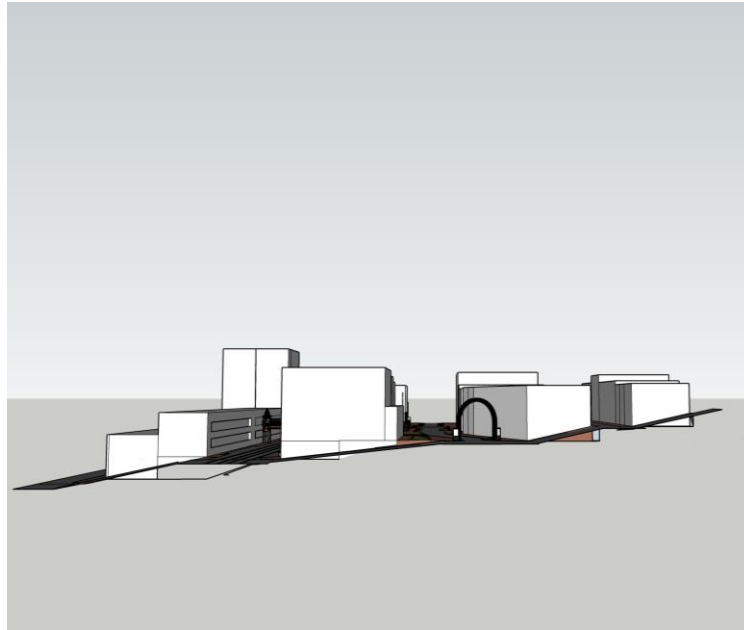
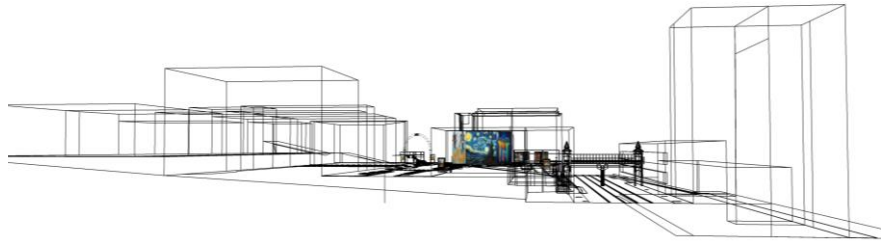


Legend	
Just Vehicles/One Way	
Bus Route	
Train Route	



LUMION

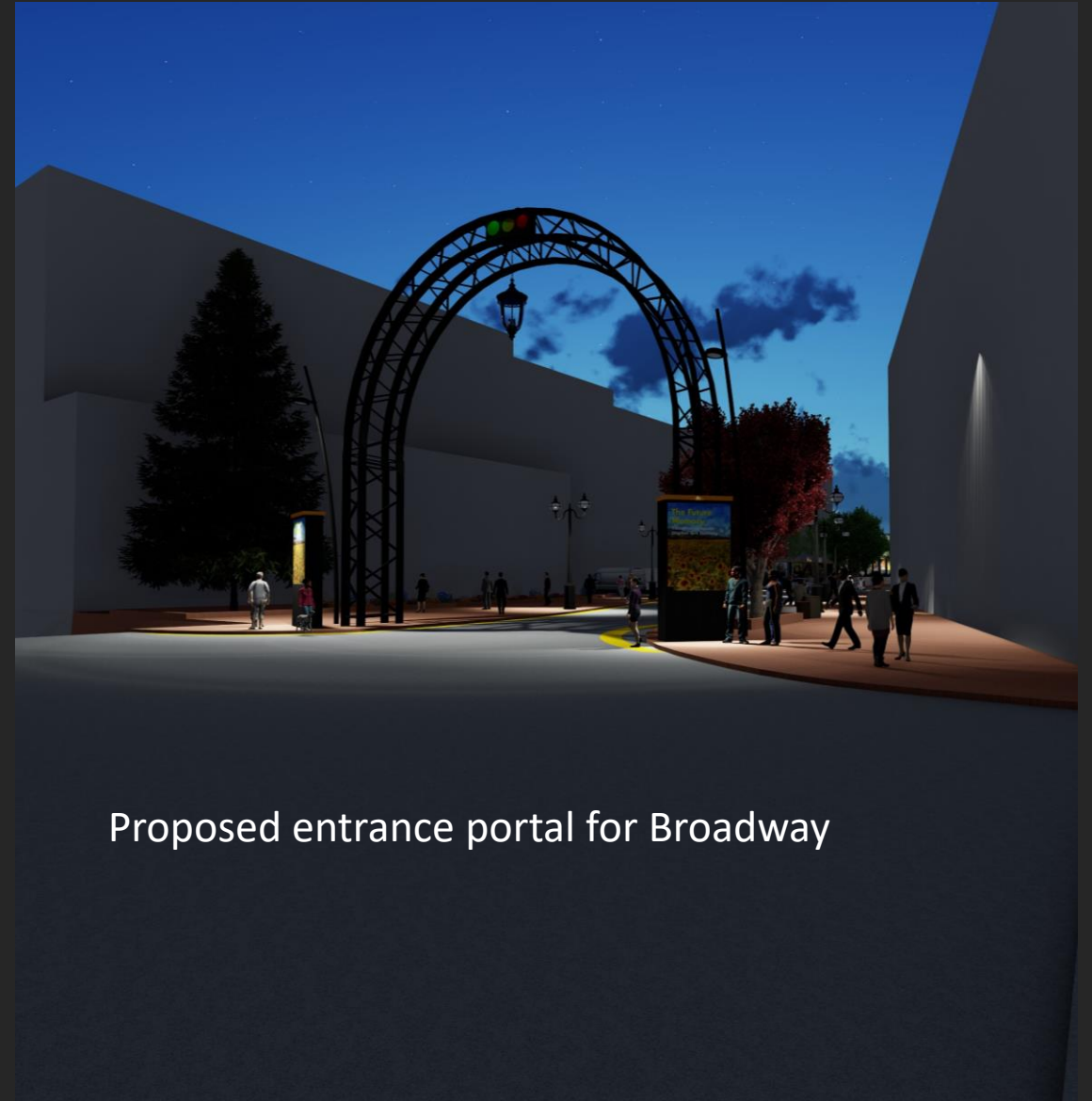
Proposed Site Plan



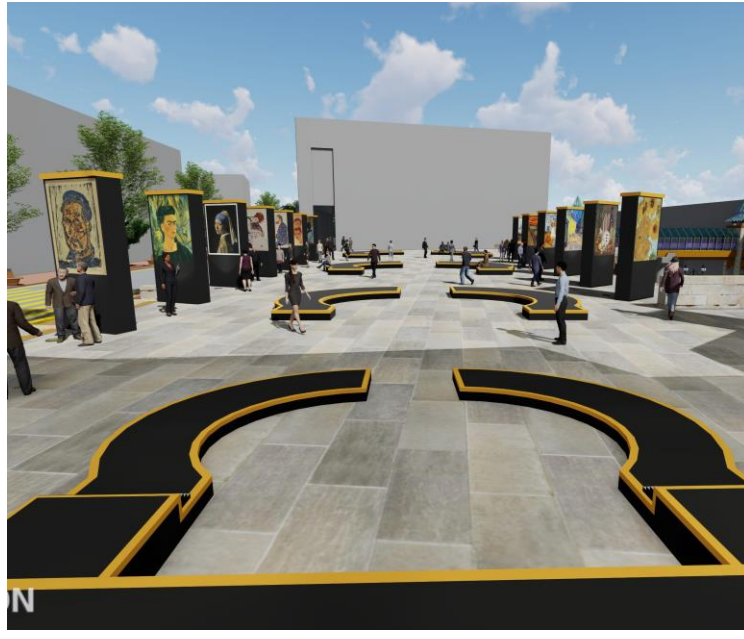
Cut Sections



Proposed garbage bin for Commerce



Proposed entrance portal for Broadway



Tacoma Outdoor Digital Art Gallery
on the plaza level



Broadway



Commerce



Proposed Bus Station |



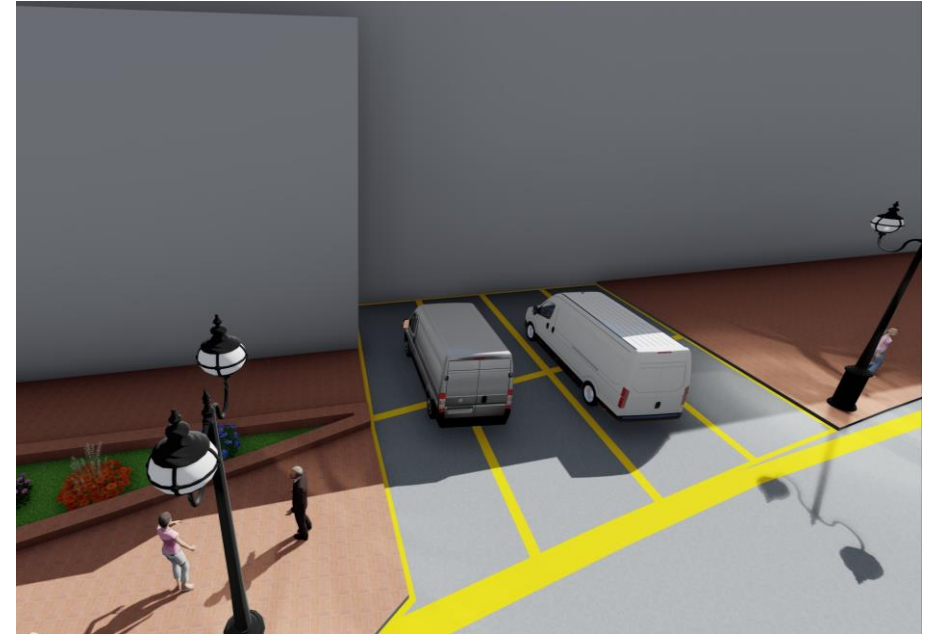
Plaza Level



Christmas Tree

Solution for hiding spots





Slides
