

THE MAGAZINE OF THE MART SHOWROOMS

DESIGN CHICAGO

**TRUE
COLORS**

EVERY HUE,
EVERY SHADE

**KITCHENS
TO LOVE**

**Modern
Maximalism**

STELLAR DESIGN FROM THE ATLANTIC
TO THE PACIFIC

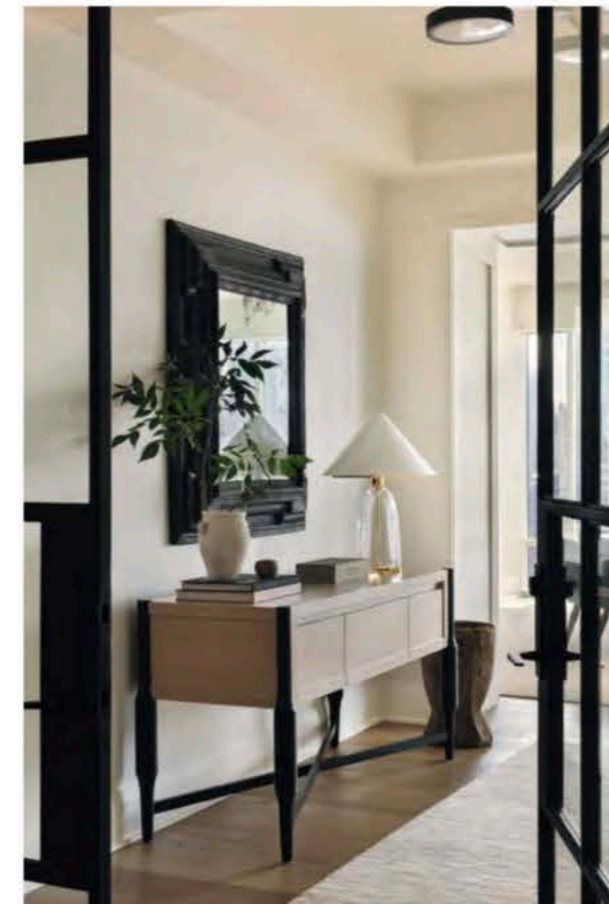


The decked-out kitchen includes a **Wolf** oven and range, a **Miele** dishwasher, and although not visible, a **Sub-Zero** refrigerator and freezer. With its casual elegance, light tones, and lake views, a coastal feel permeates the air.

ON CLOUD **NINE**

ANDREA GOLDMAN INFUSES A WEST COAST
SENSIBILITY INTO A HIGH-RISE DWELLING
SUSPENDED OVER CHICAGO'S GOLD COAST.

WRITTEN BY NICOLE HADDAD
PHOTOGRAPHY BY AIMÉE MAZZENGA



Sometimes, it really is all about the views. Especially when said views make you feel like you're hovering at the edge of the world, gazing at an endless expanse of sunlit water (hello, Lake Michigan!), only to turn and be confronted with an aerial perspective of Chicago's iconic Hancock building. It's akin to living on an island in the sky, with the city humming along below you.

The gravitational pull of those stunning panoramas proved irresistible when designer Andrea Goldman was transitioning a pair of empty nesters' Gold Coast pied-à-terre into their primary

residence. "We were in the middle of the design process, when another unit, on a much higher floor in the building, opened up," says Goldman. While practicality weighed in, the sweeping vistas won out. "It had a different feel as far as the sightlines," she explains. "It felt like you were floating in the clouds."

Aside from a front-row seat to nature's quiet luxuries, the previous owners had implemented a dark and heavy aesthetic that dominated the space. To create the relaxed Southern California aesthetic the clients had envisioned, Goldman replaced the floors with an inviting bleached wood throughout, lightened up the trim

Clockwise from top left: Luca side tables in a platinum ceruse finish from **Anees** are topped with Aurora table lamps by **Formations** through **Holly Hunt**. The latter's transparent base fosters a sense of openness. Black metal-and-glass doors frame the entrance to the front hall. In a corner of the family room, a multifunctional pedestal table is paired with ultra-dapper Bercut chairs upholstered in a fabric from **Larsen** through **Cowtan & Tout**. The chairs, which are enhanced with a leather back, are by **McGuire** through **Baker**.

In the dining room, variously-sized, and cleverly arranged Tim pendants—by **Hector Finch** through **Michael-Cleary**—create a special moment without obstructing the views. **Cahn** armchairs from **The Bright Group** add a pop of color.



and wall paint, and added layers of warm, earthy tones and textures. To set the mood, visitors walk off the elevator into an enchantingly moody entry vestibule fitted in an inky-blue grasscloth wallpaper, only to be greeted by sleek, black metal-and-glass doors that lead into a light and airy front hall. A stately, carved wood Flemish mirror over an attractive wood console with turned metal legs commands attention, before the space opens into the home's show-stopping dining room. The epitome of California chic, an almond-hued round oak dining table takes center stage, beautifully contrasting with the enticing blue fabric that defines the plush armchairs. Overhead, three artfully arranged glass-blown pendants form an intriguing tableau while preserving the views.

To maximize the layout, Goldman situated the living and family rooms on either side of the dining room—essentially creating one long entertaining area. Another set of black metal-and-glass doors create a visual demarcation between the dining and family room, the latter of which offers a cozier, casual vibe with a wool rug, warmer colors, and a multifunctional table. For more formal affairs, an exquisitely curated living room offers multiple seating options, its tone-on-tone appeal enhanced by layers of tactile textiles, including a sumptuous bouclé, a rich suede, and a soft-to-the-touch wool. A sisal rug that extends across the dining and living room creates a sense of cohesion while balancing out biased angles near the living room's pillars. "We cheated the geometry of the space with the simplicity and quietness of sisal—the lack of pattern makes the lack of 90-degree angles indiscernible," says the designer.



The kitchen—which connects to the family room for shared moments during culinary endeavors—was completely gutted. Goldman even knocked down cabinetry and punched out a brick wall to bring back a previously covered up window—giving Lake Michigan a starring role. Now, honey-toned cerused-oak cabinetry and countertops in an Iceberg Quartzite reflect the spectacular scene outside. At night, the main bedroom's serene ambiance beckons. A textural taupe wallpaper envelops the room, while a chunky knit throw over

the bed draws the eye and encourages repose.

With the sky's ever-evolving palette of blues cascading in from the floor-to-ceiling views offered from three different exposures, walking from one room into another often evokes the sensation of moving from indoors to out. "It's mesmerizing. You almost just want to walk right out the glass and into the views," laughs the designer. A far cry from the outwardly cold nature of the urban landscape below—Goldman designed a family home that rivals the surrounding panoramas. ■

Left: A comfortable sofa upholstered in an alluring fabric from **Rogers & Goffigon** through **Cowtan & Tout** infuses the family room with a more relaxed feel. The Cairo Chandelier, by **Fuse Lighting** through **The Bright Group**, ties in all the black metal elements. **Above:** Window treatment fabric through **Holly Hunt**; Bed, chair, and ottoman from **A. Rudin**; Nightstands from **The Bright Group**; Runic floor lamp is by **Formations** through **Holly Hunt**.