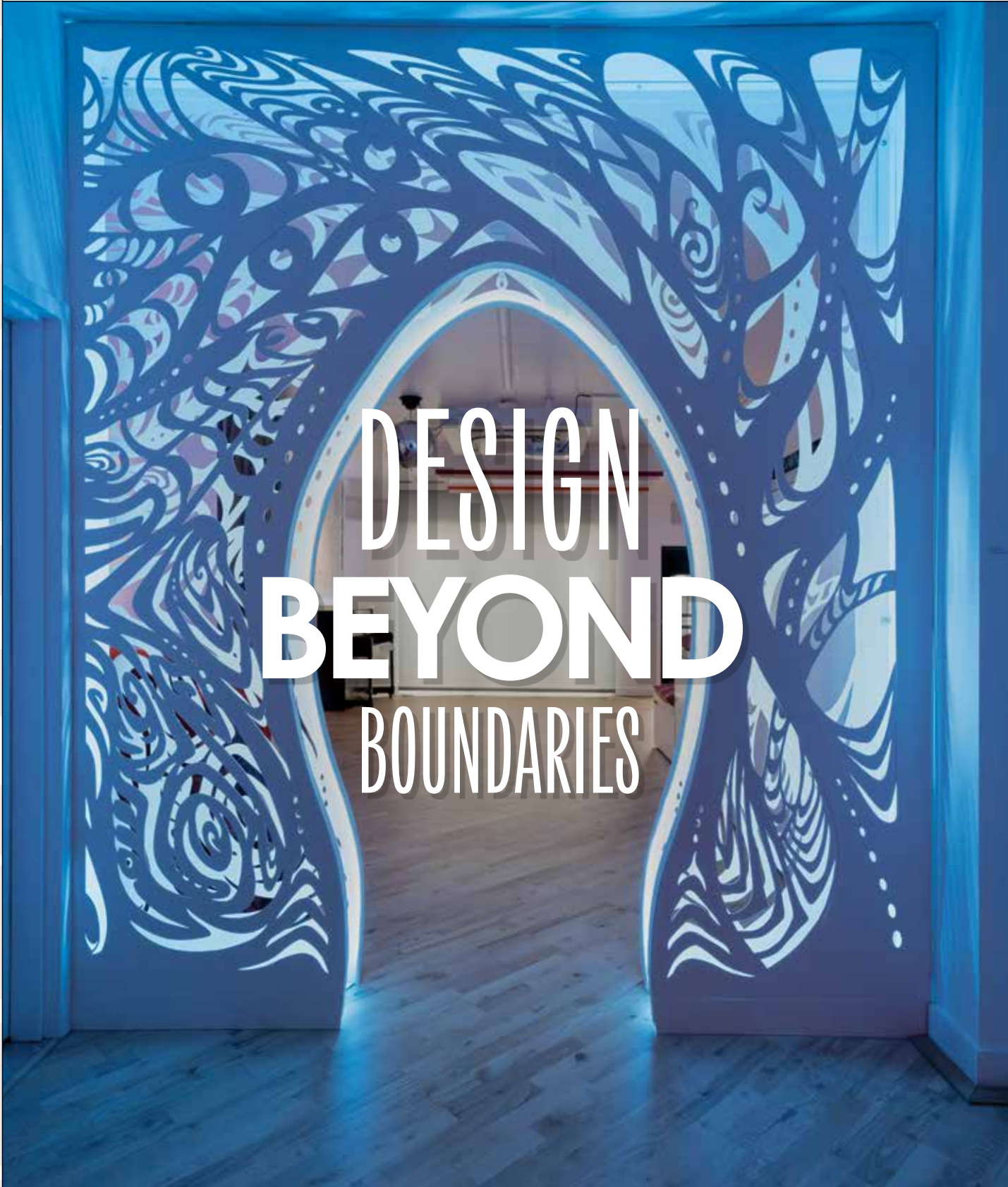


Fall 2024

asid ny møtro

# DESIGN



DESIGN  
BEYOND  
BOUNDARIES

# FAB FIND

Photographer: Patrick Kolts



Featuring the contrasting characters of mouliné yarn and alpaca merino wool, Helig (on the wall) recalls the effects of casted shadows. Mantra, meanwhile, references an architectural wonder — India's 18th-century Jantar Mantar Observatory. A woven pattern of alpaca merino wool along with differing felted wools and silks causes various shifts in perspective.

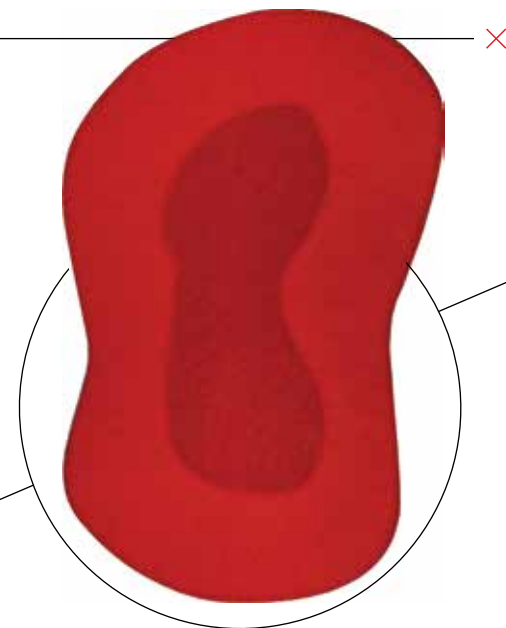
## Threads of Innovation

MERIDA STUDIO BLURS THE LIMINAL LINE BETWEEN ART & DESIGN

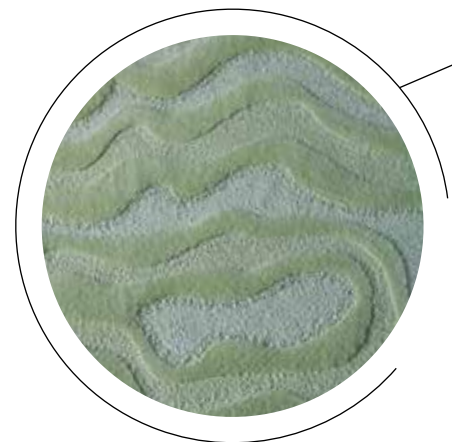
To immerse oneself in Merida Studio's world is to be transported to a place where history, culture, craftsmanship and modernization converge, ensuring beauty is manifested in tangible forms. Led by owner Catherine Connolly, the countercultural workshop and manufacturer is known for producing collectible works of textile art. It also operates one of the few remaining mills in Fall River, Massachusetts — once the textile center of the Industrial Revolution.

Today, to experience a Merida Studio rug is to feel the hand of its master weavers through the unique tactile nature of each extraordinary (and all natural) creation. While every design starts as a graphite sketch, Paris-based Artistic Director Sylvie Johnson's encyclopedic knowledge of color theory and proclivity toward collecting antique color charts help weave a cutting-edge visual narrative later realized by the Fall River artisans. In the Atelier Series — a limited-edition body of work spanning from 2018-2024 that embodies the joint vision of the studio and Johnson — a variety of yarn types created in-house exhibit different textures that incisively engage with light and shadow and movement and dimension. Similarly, various materials and techniques are implemented to create a range of alluring effects — from tufted to looped to purposely trimmed to jacquard or dobby woven — each approach is meticulously selected to inspire dialogue and form a rich vernacular. Here, we've curated some of our favorite finds from the Atelier Series. ✕

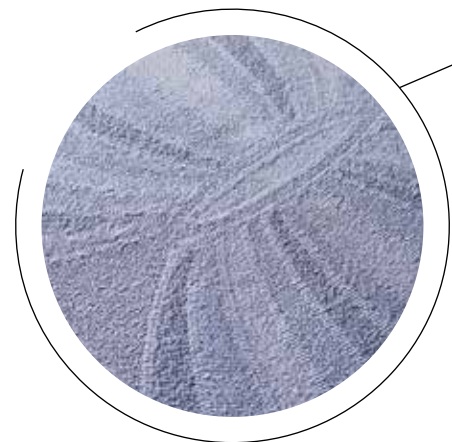
Portale (shown in Gauje) pays homage to the work of Jannis Kounellis — a key conceptual artist during the post-war Italian art movement, Arte Povera, which espoused simplicity of materials and creative expression. Contrasting wools and plied yarns in various heights form an organic motif.



Reef, shown in the aptly named Lava colorway, explores elements of nature. Pleated ripples radiate around the inner center of the "reef," appearing to be held up by its seemingly undulating border.



A detail shot of Allium in the Nymphaea colorway — the organic forms mimic the rings of a tree as it ages.



Detail shot of Aero in the Mica colorway — rich layers of mohair and mouliné yarn are juxtaposed with crimped wool, silk wool and multi-felted wool.