

SOUTHERN CALIFORNIA EDITION

# design **aspire** home

**CELEBRATING  
15 YEARS  
OF SUBLIME  
DESIGN**

**JOYFUL** COLOR,  
DISTINCTIVE SHAPES  
AND THE WILD  
IMAGINATION  
OF ITALIAN DESIGN

FEASTING ON  
OUR ANNUAL  
**BLACK +  
WHITE**  
DESIGN  
ISSUE



seeking the sublime

WINTER 2023

ASPIREDESIGNANDHOME.COM

DISPLAY UNTIL 3/21/23

# Modernist OASIS

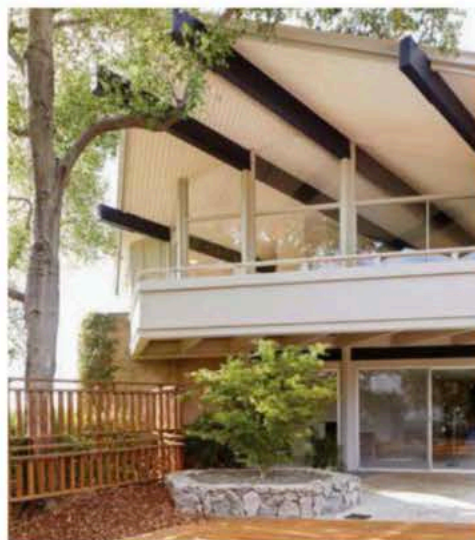


**Lisa Meier updates a unique, midcentury  
masterpiece in Southern California**

TEXT NICOLE HADDAD PHOTOGRAPHY SABRINA ROTHE



The structure's high intersecting gable roof adds drama—the height is atypical of the modernist Eichler houses the prolific eponymous developer built in the area—and offers the perfect shaded spot to take in what Meier describes as a Toscana-like landscape. The basement originally featured an unsealed concrete floor. To cover up the stains and create a cool entertainment space, Meier added replaceable floor tiles from Flor. Vintage Parallel Bar collection lounge chairs and a sofa with an attached teak side table by Florence Knoll form an eye-catching tableau. A marble side table from Bernhardt Design and Flexform's Fly marble coffee table play off each other.



Concrete steps lead up to the house—which opens up into a fresh and airy abode that honors the original design. Acapulco chairs by Innit Design offer a place to take in the sunrise.





The living room's wrap-around balcony allows for scenic views of the swimming pool and the hills beyond. Flexform's Soft Dream sofa, shown in white leather and juxtaposed with the walnut Earnes stools and Hans Wegner Shell chairs by Carl Hansen, adds fresh charm.

California Modernism has lost none of its charm—as it shouldn't. Architecture that is tailored to the landscape, embraces open-plan layouts, and exhibits a seamless transition from inside to out, are just a few of the characteristics that make this type of living so attractive. Those exact elements are what drew former film director Lisa Meier—now bicontinental designer and founder of Oneshot Design—to work on the circa 1963 house designed by architect Raymond Cobb.

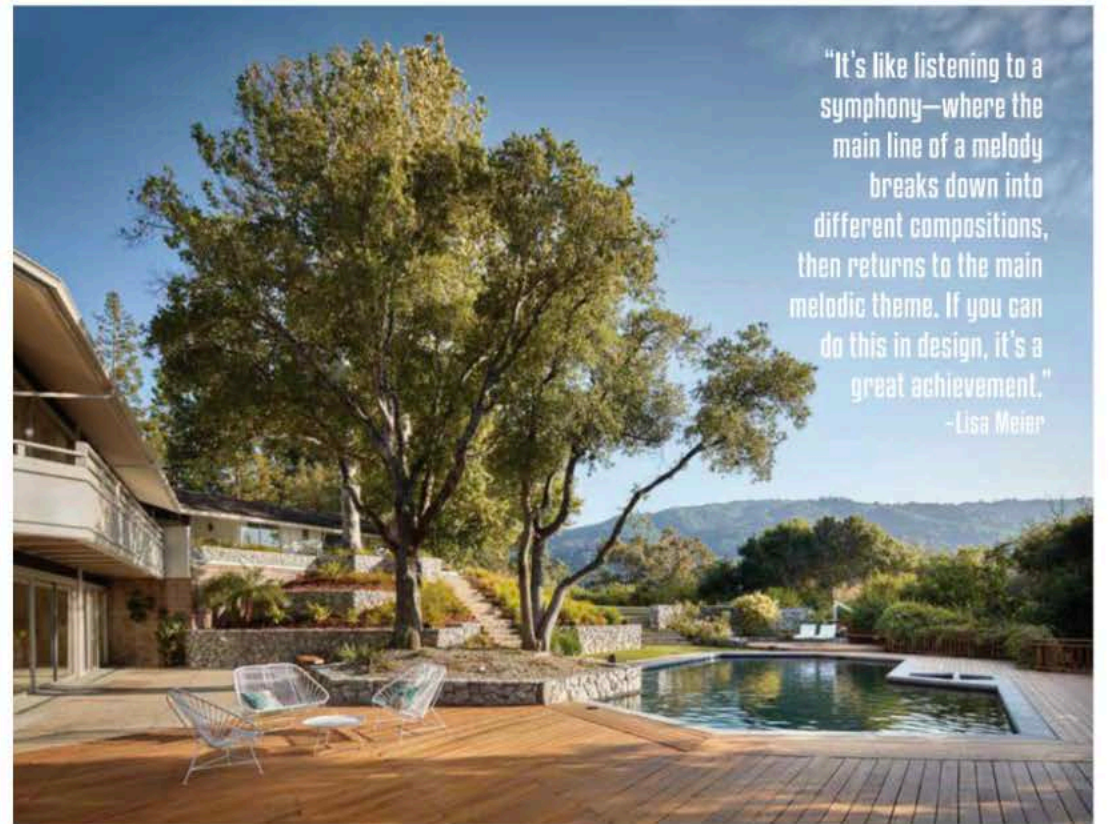
"The house is so unique in part because of its size," says Meier of the 6,072-square-foot home located in Los Gatos, California.

"But its star-shaped layout centered around the kitchen is also quite unusual—it's a bit hard to categorize but it most closely resembles a midcentury modern ranch house." Situated on a hilltop with 360-degree views, Meier made sure to preserve the split-level home's heritage while updating it for contemporaneous living. Initially, she thought the open angles throughout—which she describes as honeycomb-like—would be hard to plan around furniture-wise. Instead, she realized it provided a sense of spatial continuity.

To create the light and airy feeling that she felt the house called for, Meier painted the walls in a light and welcoming warm gray



As a former film director, Lisa Meier (**top left**), focuses on creating a cohesive design story—where craftsmanship is celebrated, and the inhabitants' personalities are reflected in the house. **Right and below:** Meier preserved as much of the house as possible—all the patio planks were sanded down and a fresh finish was applied to give them new life. The pool's concrete was replaced with a black pebble surface that gives the water an alluring appeal. While the outskirts essentially remain the same, the designer cut down trees that impeded the gorgeous vistas of the surrounding landscape—replacing them with prairie, salvia, and lavender plants that don't require a lot of water.

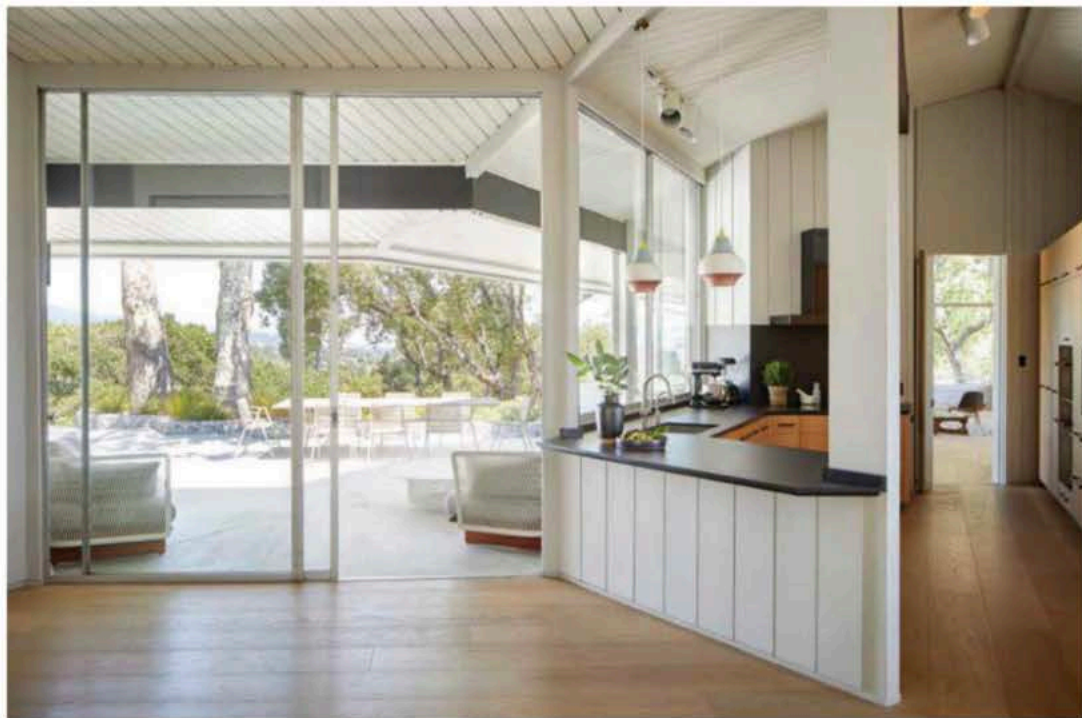


"It's like listening to a symphony—where the main line of a melody breaks down into different compositions, then returns to the main melodic theme. If you can do this in design, it's a great achievement."  
—Lisa Meier





**"Its star-shaped layout centered around the kitchen is quite unusual—it's a bit hard to categorize but it most closely resembles a midcentury modern ranch house."**  
—Lisa Meier



**Top:** Vintage Kantan armchairs by Brown Jordan dress up the back patio. **Below:** In the kitchen, the designer redid the kitchen cabinetry and eliminated a hanging piece that blocked the views—replacing it with two Louis Poulsen Cirque pendant lights. Dekton by Cosentino countertops offer chic functionality.



The concrete blocks that surround the family room's fireplace were painted in a light, semi-gloss eggshell tone to emphasize the hearth's beautiful vintage features and contrast with the wood ceiling beams. Oat-colored linen drapes add warmth.

tone—a big improvement over the avocado green that previously adorned the walls. The old wood floors, originally laid out in varying colors, were ripped out along with carpet dotted throughout the home—both replaced with large oak planks in a white-washed oil finish that opens everything up. In the living room, Meier added classic midcentury pieces such as Hans Wegner shell chairs and a Noguchi coffee table, balancing them out with more contemporary designs such as a sleek Flexform sofa adorned with African mudcloth pillows, a Foscarini Twiggy lamp, and a leaf-like patterned rug that ties into the outdoors and the ceiling beams' darker tones. Meanwhile, in the family room, to play into the lack of symmetry,

Meier kept it simple, adding an irregular-shaped cowhide rug along with an Eames lounge chair and two of the designer's smaller plywood chairs. A Secto Design pendant light and a Flos floor lamp provide ambient illumination.

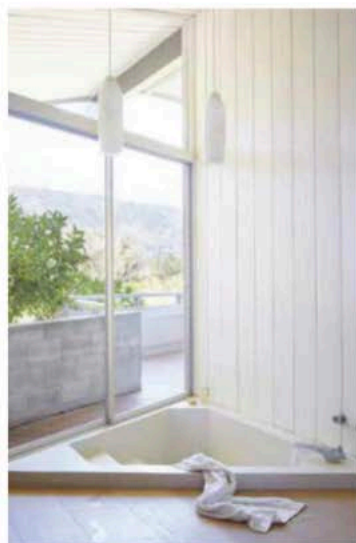
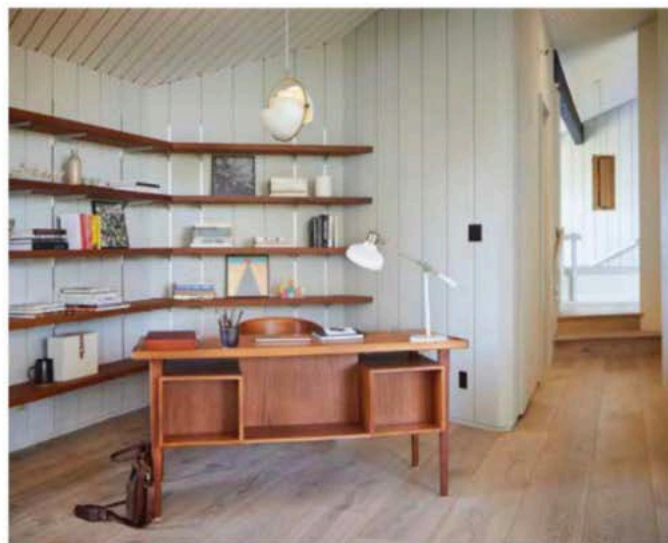
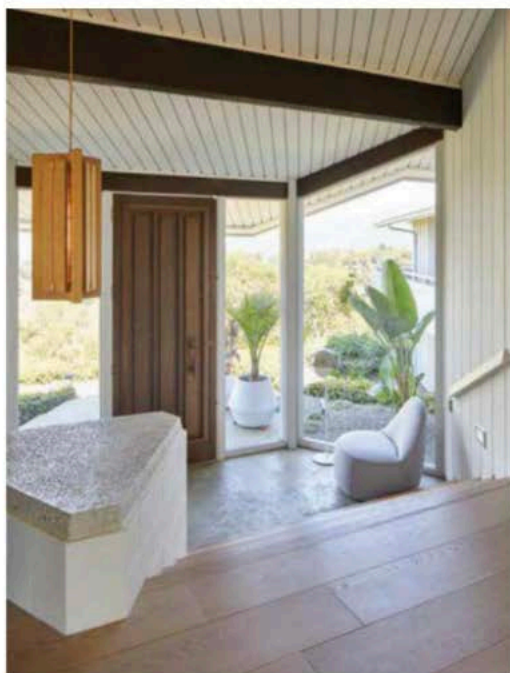
In the kitchen, which leads to the various public and private rooms, Meier replaced the cabinets with light oak cabinetry and ripped out one hanging cabinet that blocked views of the Los Gatos Mountains—replacing it with two Scandinavian pendant lights. A thin floating countertop made of Dekton by Cosentino offers a perfect perch from which to take in the panorama. The main bedroom, meanwhile, exhibits a stunning, original sunken bathtub

**"It's a total dream home. The architect stayed persistent in his design concept."**

**-Lisa Meier**

made of terrazzo poured on-site. Another fun find occurred in the office: As the designer sanded down the original bookshelves—also painted in an avocado green—she realized they were made of redwood. She decorated the restored shelves with vintage records, ceramic pieces by a local artist, books and the like, and added a vintage Danish desk overlooking the lush vistas provided by the floor-to-ceiling windows. In the lower level/basement, which opens up to the pool deck, the designer added carpet tiles from Flor to establish a perimeter and cover the old concrete floor, and then enlivened the room with designs by Florence Knoll—including a blue bouclé sofa—and a marble table from Flexform.

"It's a total dream home," says Meier. "The architect stayed persistent in his design concept, especially in regard to the honeycomb angles. They're everywhere but it's subtle. It's like listening to a symphony—where the main line of a melody breaks down into different compositions, then returns to the main melodic theme. If you can do this in design, it's a great achievement."



**Clockwise from top right:** The home's inviting entry features a vintage pendant light, concrete floors, and newly painted walls and ceiling in a light gray hue from Sherwin-Williams. One of the home's coolest features is the original sunken bathtub made of terrazzo poured on-site—a skill Meier says is hard to find these days. A Gubi pendant light, redwood shelves, and a teak, vintage desk offer a relaxing place to work.