

INDEPENDENT

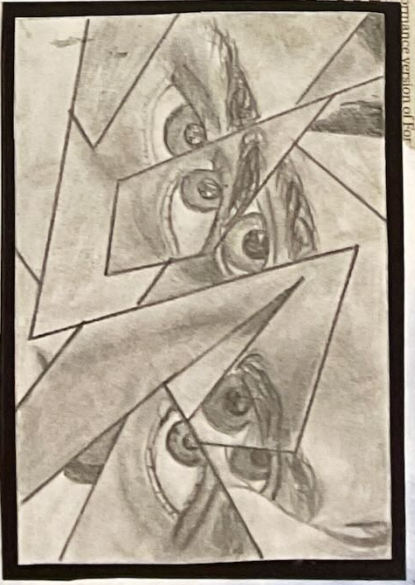
Continuing my research into fragmented portraits I looked at various ways in which these portraits can be fragmented, using different techniques and mediums such as trial pieces, line studies, acrylic pieces and using different canvas types.



I feel this was an effective 'fragment piece' and the acrylic medium was well to draw on.

Using a mix medium of paper and cardboard, I created a portrait using thin art in 100 pieces, to piece together again.

In this piece I've used my knowledge and skills of pencil work to create a portrait piece. Using triangular fragments I've created a fragmented mirror effect, while still acknowledging the fragments research. I feel this was essential, but more daring, adding meaning to the artwork.



The day before driving a Ford Mustang Mach 1 GT, I spent some hours driving a rest and modified Ferrari Dino. This 1973 beauty had the original V8 engine, also from the original Ferrari Dino.



Continuing my research, I decided to try a different way to show the fragmented style in my portrait. Here I've used both trial pencil and bird lines to create a fragmented portrait. Instead of cutting up the piece, here I've scribbled it into sections to show a contrast between the dark tone and the light tone. I've used my skills and creativity.

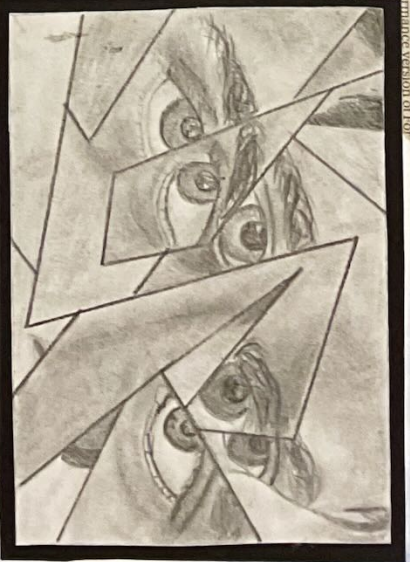
① ② ③ ④ ⑤ ⑥ ⑦ ⑧ ⑨ ⑩ ⑪ ⑫ ⑬ ⑭ ⑮ ⑯ ⑰ ⑱ ⑲ ⑳ ㉑ ㉒ ㉓ ㉔ ㉕ ㉖ ㉗ ㉘ ㉙ ㉚ ㉛ ㉜ ㉝ ㉞ ㉟ ㊱ ㊲ ㊳ ㊴ ㊵ ㊶ ㊷ ㊸ ㊹ ㊺

Continuing my research into fragmented portraits I looked at various ways in which these portraits can be fragmented, using different techniques and mediums such as trawl pieces, line studies, acrylic pieces and using different canvas types.

I feel this was an effective fragment piece and the acrylic in 2.5cm worked well to create a 3D effect.

Using a mix medium of paper and cardboard, I created a portrait fully then cut in into pieces, to take together again.

In this piece I've used my knowledge and skills of pencil work to create a trawl piece. Using triangular fragment lines, I created a shattered mirror effect, while still acknowledging the fragment research. I feel this was successful, but I could add more detail and shading to create a more realistic effect.



Continuing my research, I decided to try a different way to show the fragmented style in my portrait. Here I've used both trawl pencil and biro lines to create a fragment portrait. Instead of cutting up the piece, here I've retrieved it into sections to show a contrast between the dark tone being this helped to improve my skills and create a more realistic effect.

The day before driving a Ford Mustang Mach 1, I spent some hours driving a restored and modified Ferrari Dino. This 1973 beauty had the original V8 engine, also from a Ferrari.

...in fact, the new high-performance version of Ford's...