



GERALD J. CALIENDO
ARCHITECTS



CORD MEYER
DEVELOPMENT

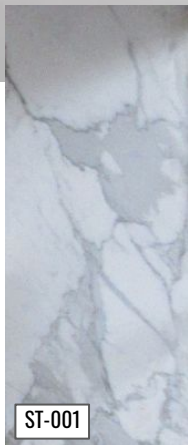
LOBBY



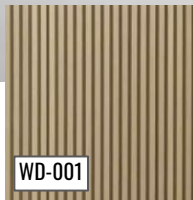
INSPIRATION



LOBBY MATERIALS



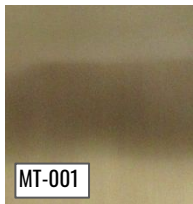
ST-001



WD-001



ST-002

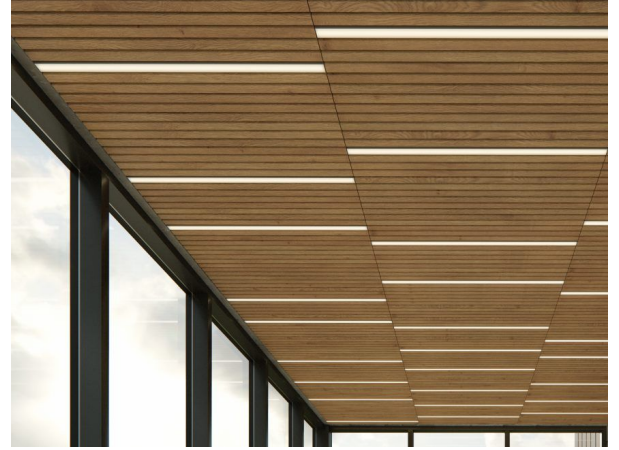
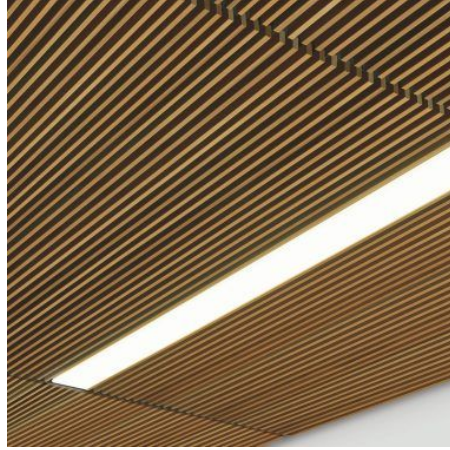


MT-001

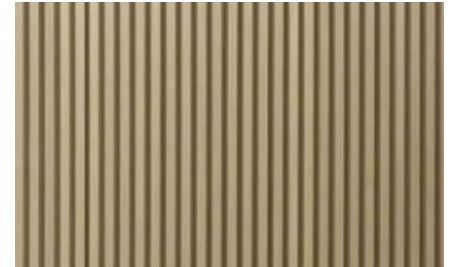


ST-003

CEILING REFERENCES



◀ LINEAR LIGHTS



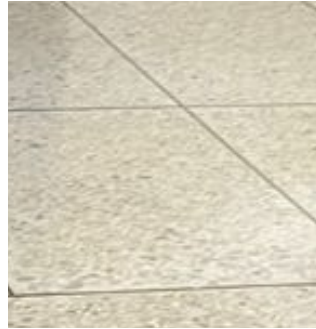
▲ WHITE OAK
FLUTED WOOD

LOBBY COLORWAYS



ST-001

▲ **WHITE
MARBLE WALLS**
(ext'g to remain)



▲ **WHITE FLOOR SLABS**
(ext'g to be replaced)



MT-001

▲ **BRONZE
ACCENT COLOR**
(ext'g to remain)



ST-002



ST-003

▲ **PROP. STONE FINISHES**
For desk, custom planters



GERALD J. CALIENDO
ARCHITECTS

138-72 QUEENS BLVD.
BRIARWOOD, NY 11435



CORD MEYER
DEVELOPMENT COMPANY

PROJECT: Cord Meyer Green Redesign
ISSUE DATE: 11.09.22

LOBBY FLOOR TILE OPTIONS

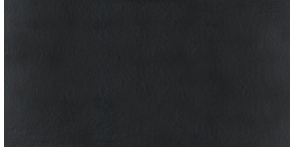


TABLA SIRIUS

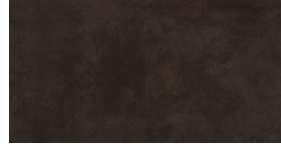


TABLA KERANIUM

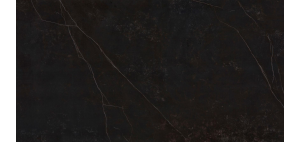


TABLA KELYA

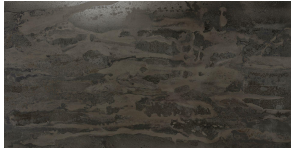


TABLA RADIUM



TABLA KIRA



TABLA FOSSIL



TABLA ORIX



TABLA LAOS



TABLA ETER

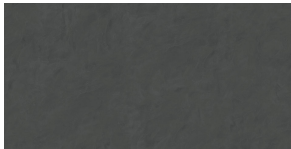


TABLA MICRON

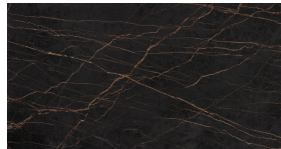


TABLA LAURENT

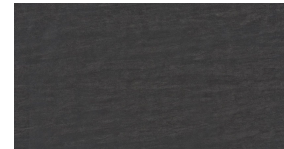


TABLA BROMO

DEKTON TILES



AWAKE



TAGA



TRILIUM

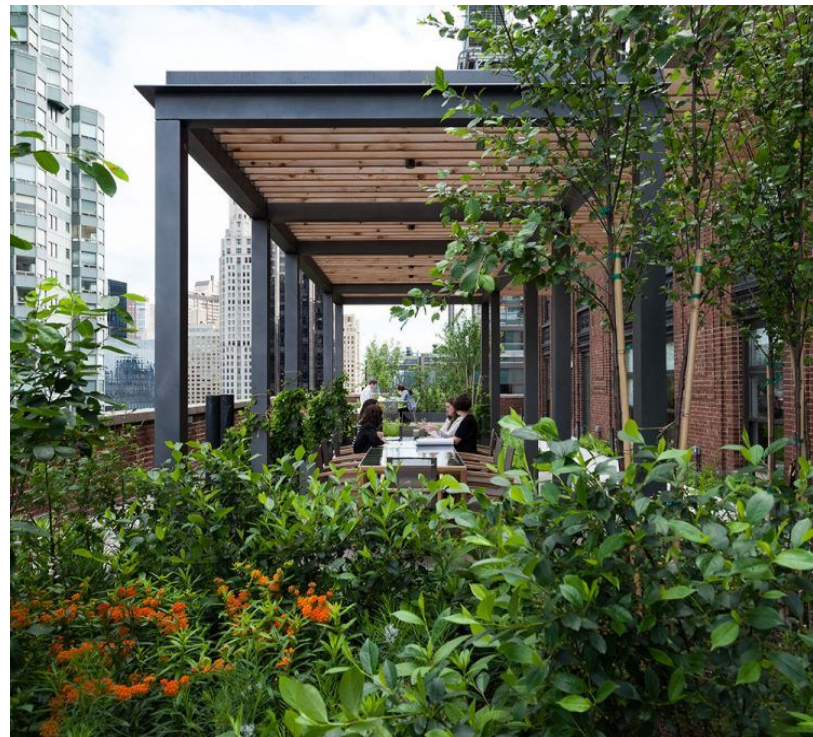
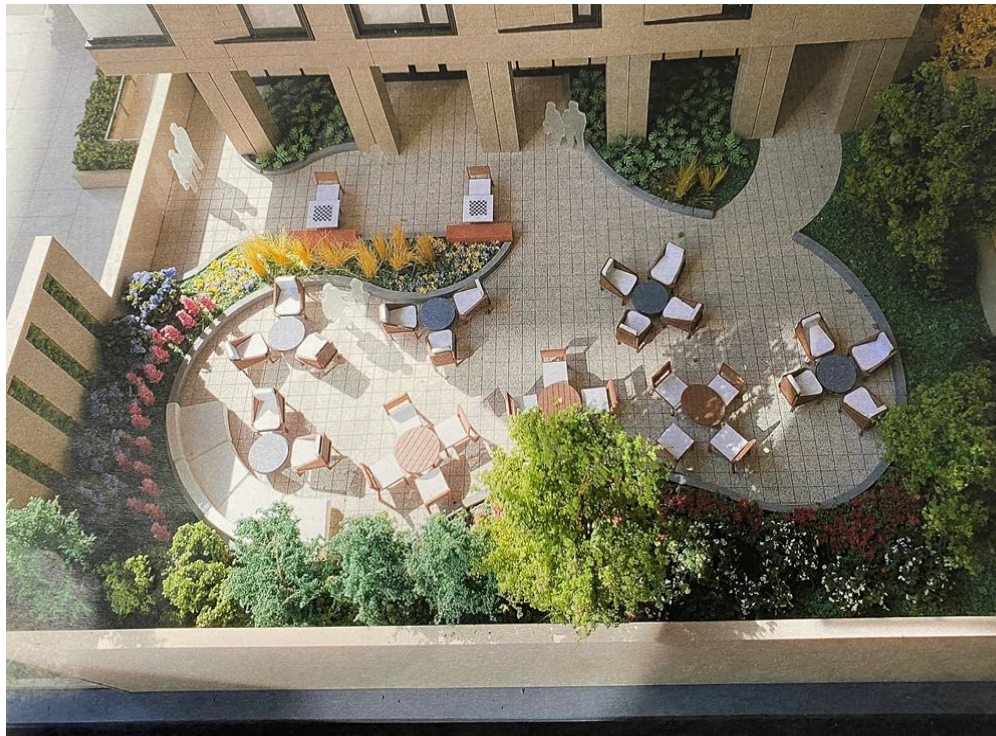


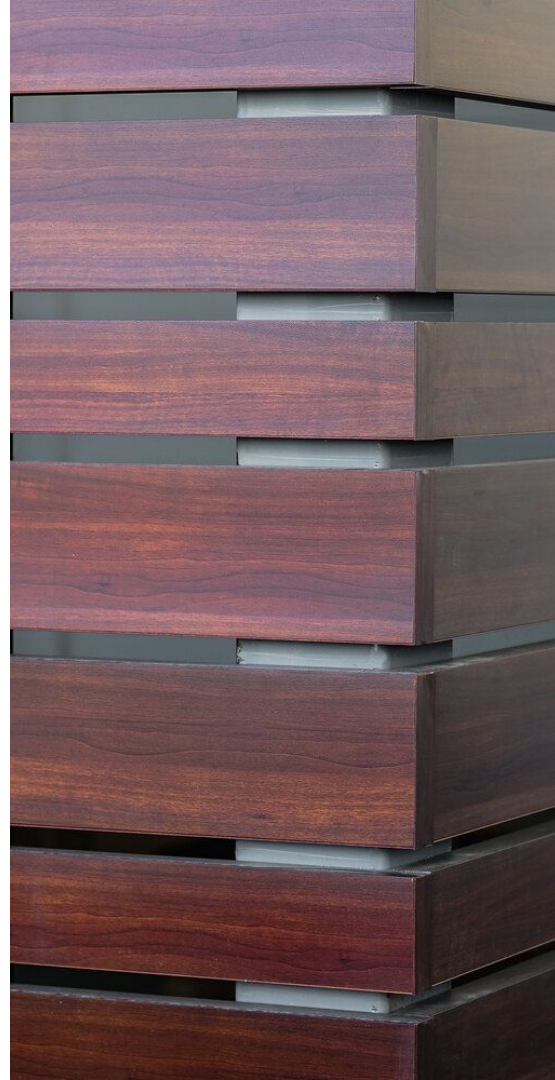
ARGA

**2ND FLOOR
TERRACE**



INSPIRATION



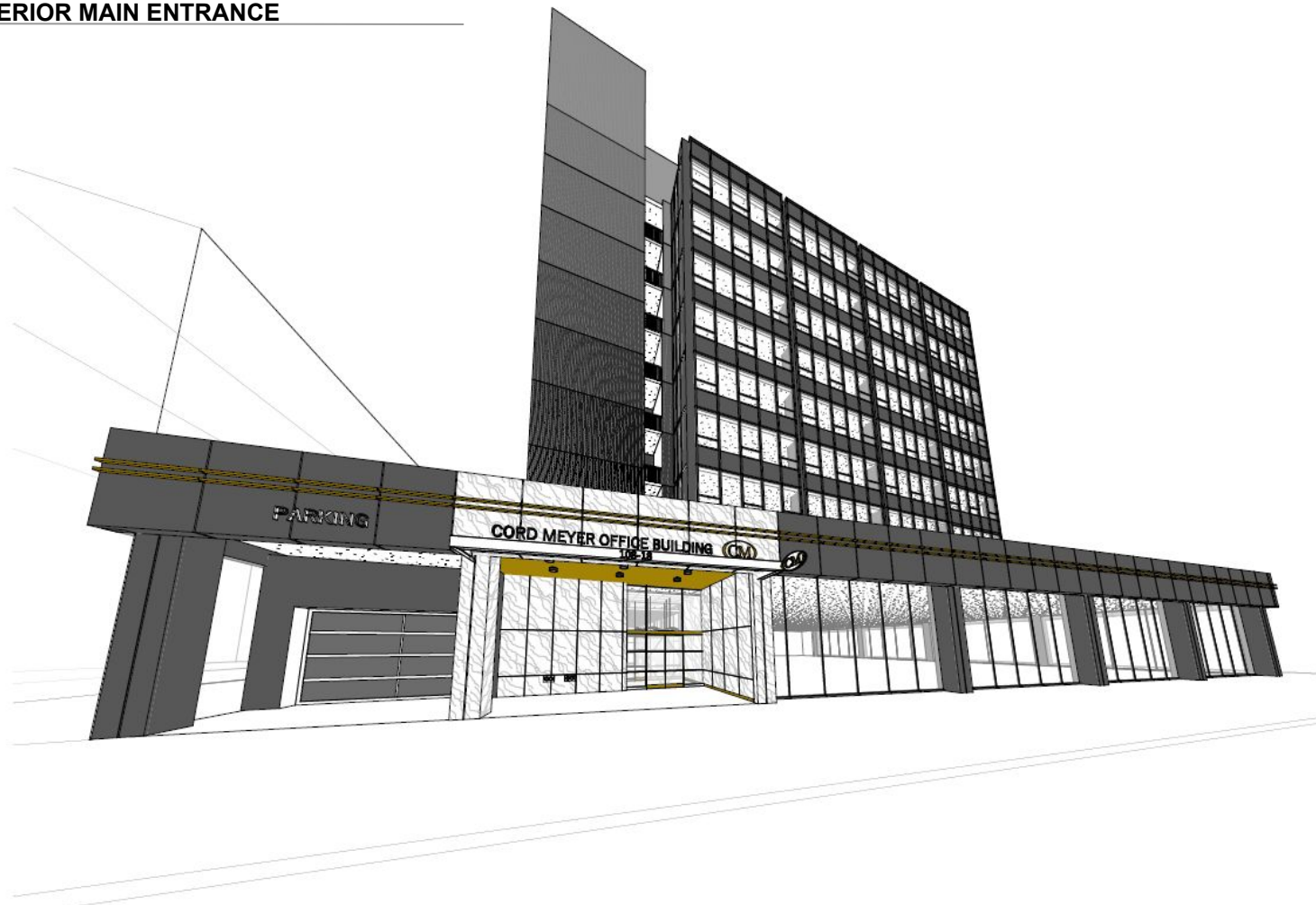


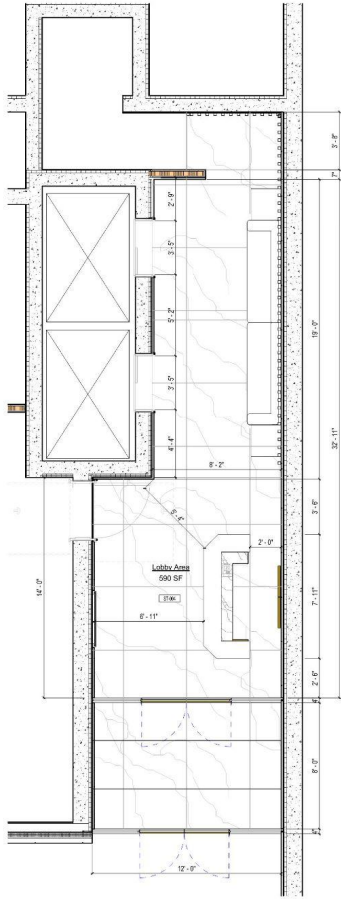
**outdoor
MATERIALS**

**FLOOR
PLANS**

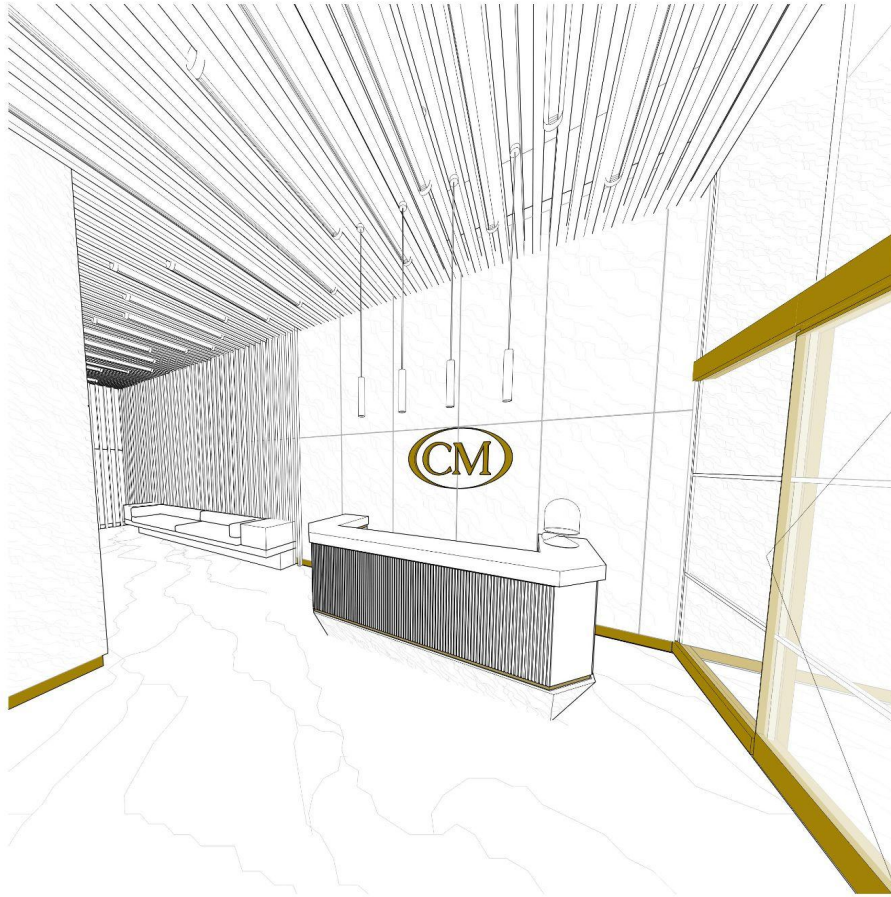


FRONT EXTERIOR MAIN ENTRANCE



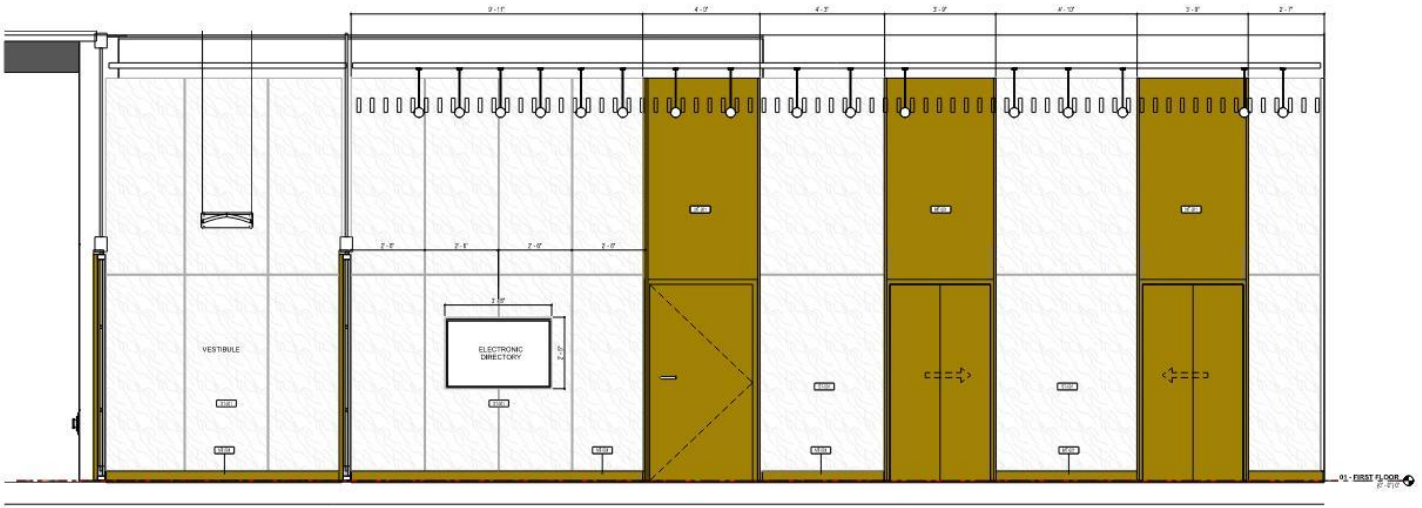
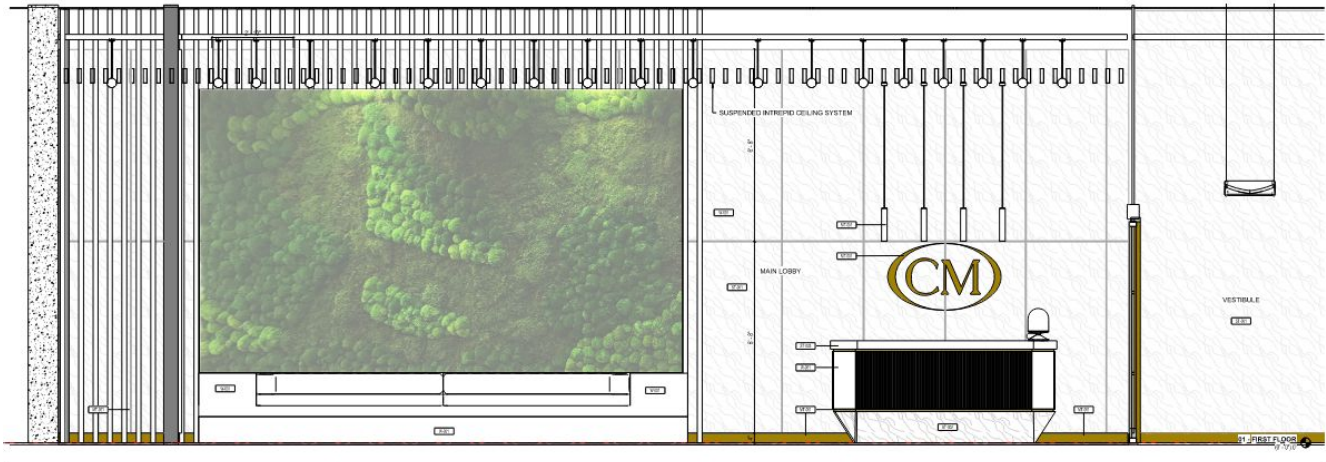


01 - FIRST FLOOR - LOBBY PLAN
 Scale: 3/8" = 1'-0"



PERSPECTIVE LOBBY
 Scale:

Lobby Elevations





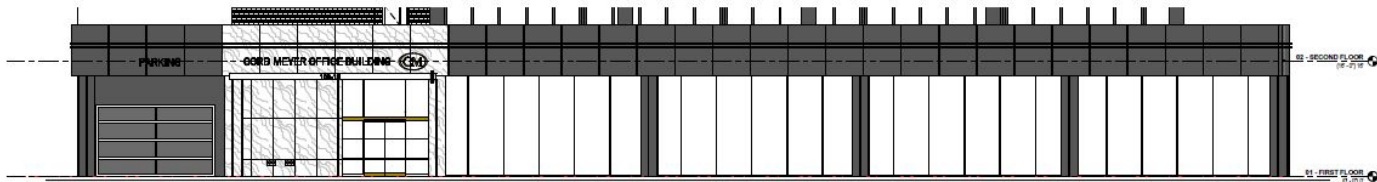
EXTERIOR ENTRY

Scale



FRONT EXTERIOR ENTRY

Scale



FRONT LOBBY ELEVATION

Scale 1/8" = 1'-0"



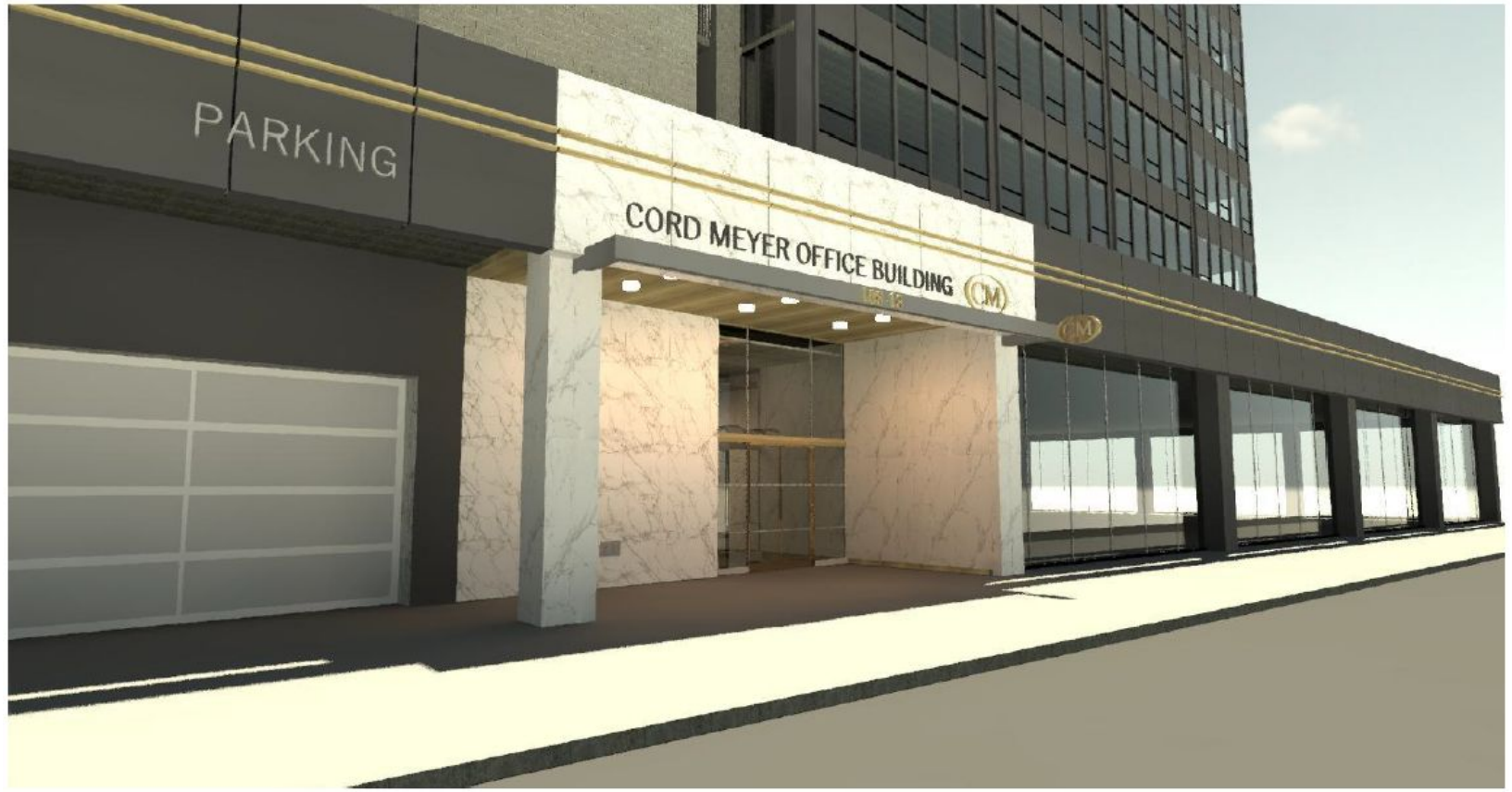
LOBBY OPTION 1



LOBBY OPTION 2

LOBBY OPTION - GREEN WALL





PARKING

CORD MEYER OFFICE BUILDING



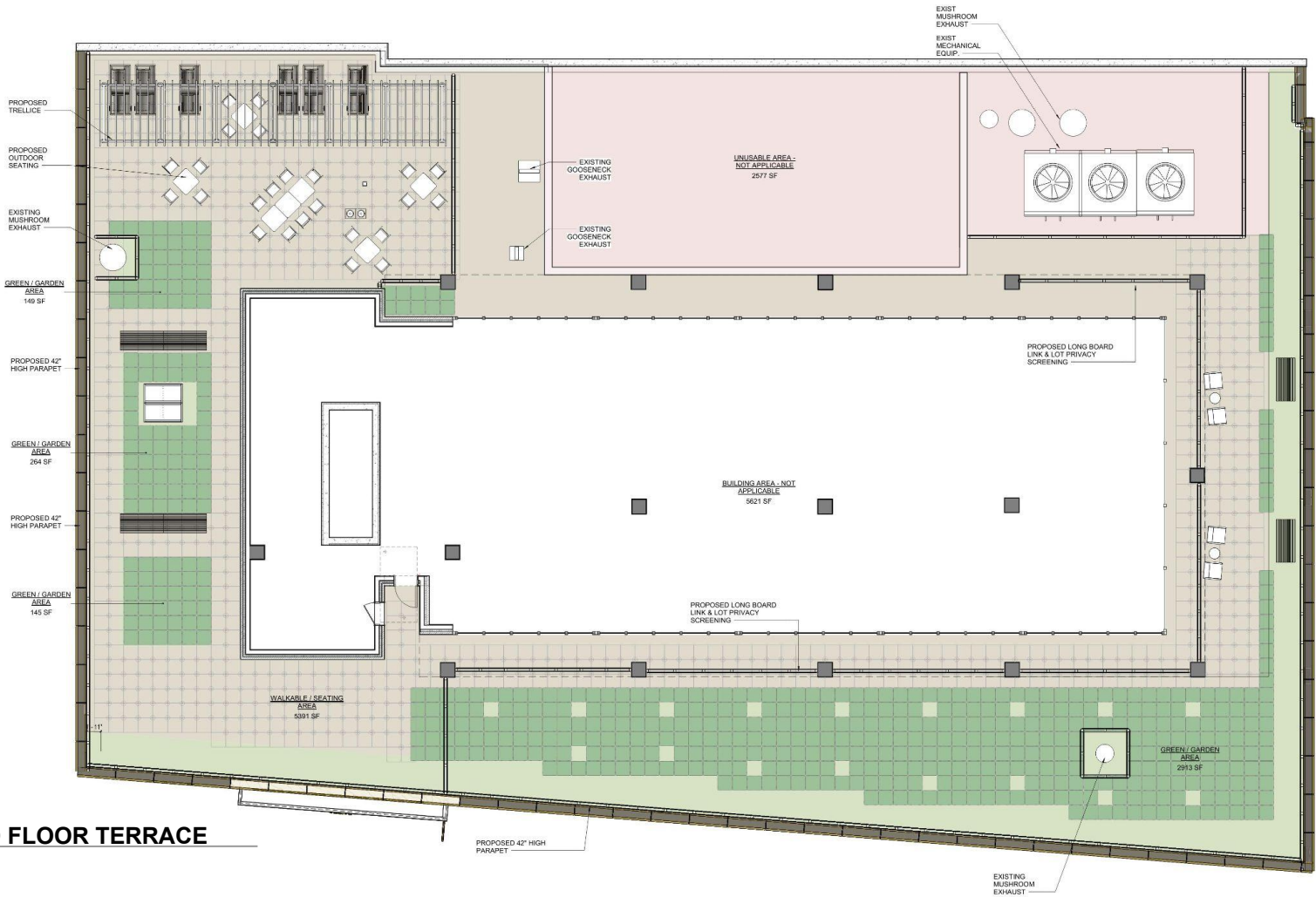
CORD MEYER OFFICE BUILDING



108-18





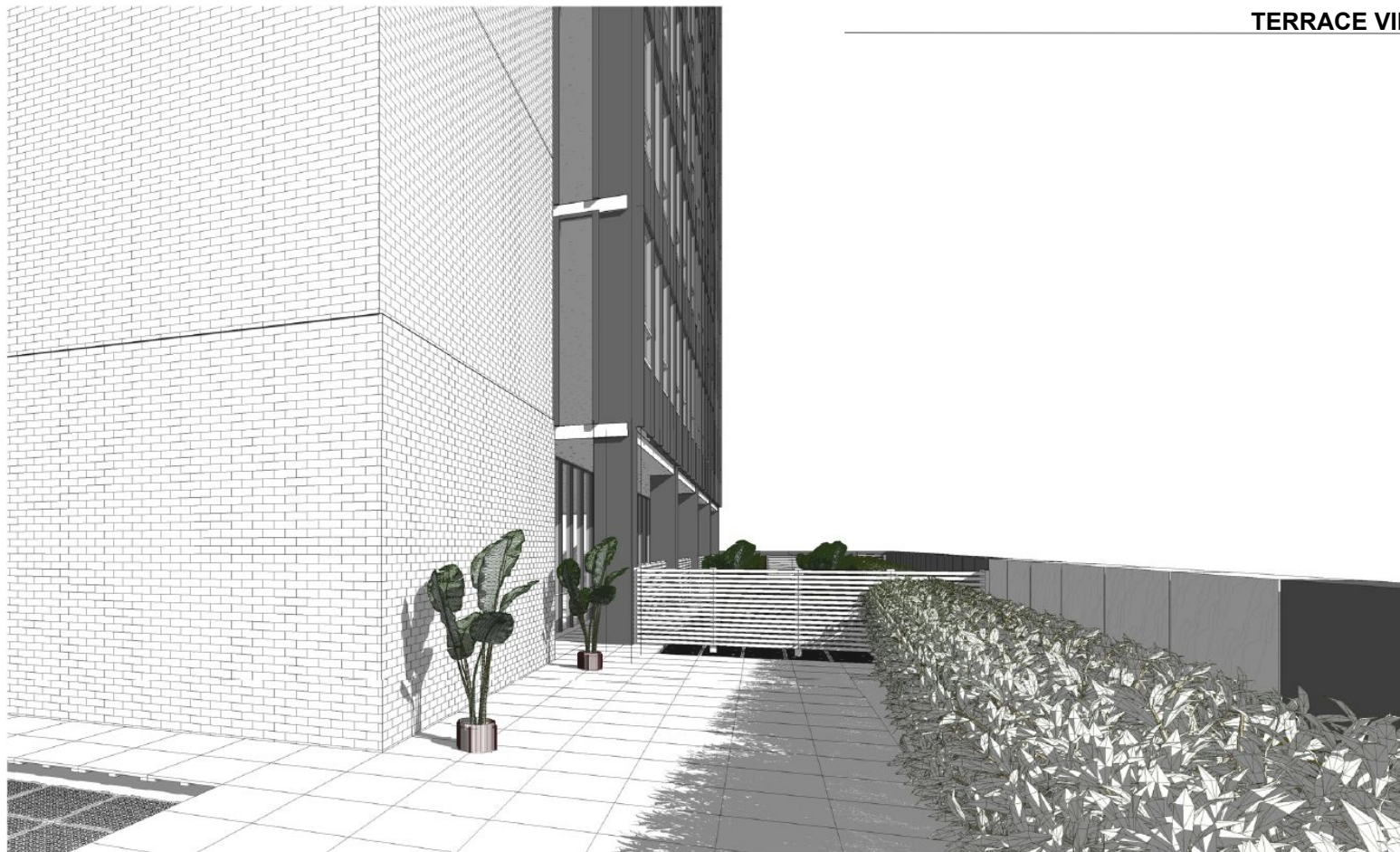


SECOND FLOOR TERRACE

TERRACE VIEW



TERRACE VIEW





**DESIGN
SPECIFICATIONS**





GERALD J. CALIENDO
ARCHITECTS

138-72 QUEENS BLVD.
BRIARWOOD, NY 11435



CORD MEYER
DEVELOPMENT COMPANY

PROJECT: Cord Meyer Green Redesign
ISSUE DATE: 11.09.22

SPECIFICATION

SOURCE Longboard Architectural Products

COLOR/FINISH Wood grain finish on aluminium substrate

DIMENSIONS

NOTES

Longboard intrepid ceiling system mechanically fastened to conventionally framed ceiling structure

GENERAL INFO

All materials and methods of construction must comply with all applicable international, national, state, city, and local building codes. Certificate of compliance to be submitted to owner by product manufacturer. All materials and construction must be contract quality and comply with owner's standards and specification. Subcontractor to verify field measurements prior to purchase and fabrication. Refer to preambles for additional fabrication and installation requirements.

REFERENCE

Refer to GJC drawing set for location and design intent.



QTY.	ITEM	ITEM #
	INTREPID CEILING SYSTEM	



GERALD J. CALIENDO
ARCHITECTS

138-72 QUEENS BLVD.
BRIARWOOD, NY 11435



CORD MEYER
DEVELOPMENT COMPANY

PROJECT: Cord Meyer Green Redesign
ISSUE DATE: 11.09.22

SPECIFICATION

SOURCE Longboard Architectural Products

COLOR/FINISH Wood grain finish on aluminium substrate

DIMENSIONS

NOTES

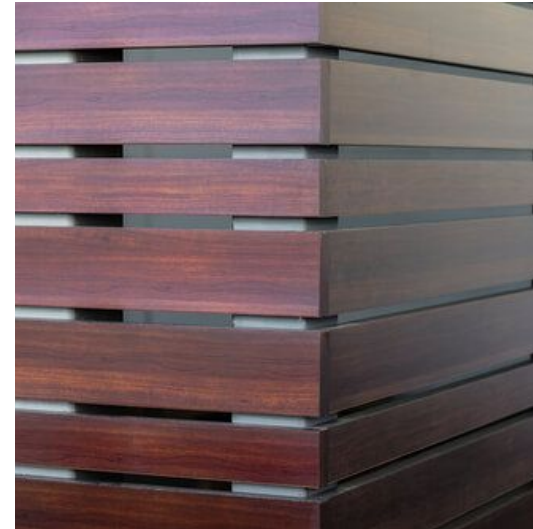
Longboard Link & Lock™ Privacy Screens for exterior terrace

GENERAL INFO

All materials and methods of construction must comply with all applicable international, national, state, city, and local building codes. Certificate of compliance to be submitted to owner by product manufacturer. All materials and construction must be contract quality and comply with owner's standards and specification. Subcontractor to verify field measurements prior to purchase and fabrication. Refer to preambles for additional fabrication and installation requirements.

REFERENCE

Refer to GJC drawing set for location and design intent.



QTY.	ITEM	ITEM #
	PRIVACY SCREEN	



GERALD J. CALIENDO
ARCHITECTS

138-72 QUEENS BLVD.
BRIARWOOD, NY 11435



CORD MEYER
DEVELOPMENT COMPANY

PROJECT: Cord Meyer Green Redesign
ISSUE DATE: 11.09.22

SPECIFICATION

SOURCE

COLOR/FINISH Glass panel with aluminium railing

DIMENSIONS

NOTES

Alternate to privacy screen - 42" high glass railing drilled into parapet

GENERAL INFO

All materials and methods of construction must comply with all applicable international, national, state, city, and local building codes. Certificate of compliance to be submitted to owner by product manufacturer. All materials and construction must be contract quality and comply with owner's standards and specification. Subcontractor to verify field measurements prior to purchase and fabrication. Refer to preambles for additional fabrication and installation requirements.

REFERENCE

Refer to GJC drawing set for location and design intent.



QTY.	ITEM	ITEM #
	GLASS RAILING	



GERALD J. CALIENDO
ARCHITECTS

138-72 QUEENS BLVD.
BRIARWOOD, NY 11435



CORD MEYER
DEVELOPMENT COMPANY

PROJECT: Cord Meyer Green Redesign
ISSUE DATE: 11.09.22

SPECIFICATION

SOURCE TileTech Paver Systems

COLOR/FINISH Artificial turf grass

DIMENSIONS

NOTES

24" X 24" Artificial Turf Grass trays for terrace

GENERAL INFO

All materials and methods of construction must comply with all applicable international, national, state, city, and local building codes. Certificate of compliance to be submitted to owner by product manufacturer. All materials and construction must be contract quality and comply with owner's standards and specification. Subcontractor to verify field measurements prior to purchase and fabrication. Refer to preambles for additional fabrication and installation requirements.

REFERENCE

Refer to GJC drawing set for location and design intent.



QTY.	ITEM	ITEM #
	TURF-TRAY™	



GERALD J. CALIENDO
ARCHITECTS

138-72 QUEENS BLVD.
BRIARWOOD, NY 11435



CORD MEYER
DEVELOPMENT COMPANY

PROJECT: Cord Meyer Green Redesign
ISSUE DATE: 11.09.22

SPECIFICATION

SOURCE TileTech Paver Systems - Pedestal system

COLOR/FINISH Cool-Roof™ Series Pavers

DIMENSIONS

NOTES

24" X 24" Cool-Roof™ Series Pavers for terrace

GENERAL INFO

All materials and methods of construction must comply with all applicable international, national, state, city, and local building codes. Certificate of compliance to be submitted to owner by product manufacturer. All materials and construction must be contract quality and comply with owner's standards and specification. Subcontractor to verify field measurements prior to purchase and fabrication. Refer to preambles for additional fabrication and installation requirements.

REFERENCE

Refer to GJC drawing set for location and design intent.



QTY.	ITEM	ITEM #
	PAVERS FOR PEDESTAL SYSTEM	



GERALD J. CALIENDO
ARCHITECTS

138-72 QUEENS BLVD.
BRIARWOOD, NY 11435



CORD MEYER
DEVELOPMENT COMPANY

PROJECT: Cord Meyer Green Redesign
ISSUE DATE: 11.09.22

SPECIFICATION

SOURCE

COLOR/FINISH

DIMENSIONS

NOTES

Linear LED light for placement in lobby Longboard Intrepid Ceiling System

GENERAL INFO

All materials and methods of construction must comply with all applicable international, national, state, city, and local building codes. Certificate of compliance to be submitted to owner by product manufacturer. All materials and construction must be contract quality and comply with owner's standards and specification. Subcontractor to verify field measurements prior to purchase and fabrication. Refer to preambles for additional fabrication and installation requirements.

REFERENCE

Refer to GJC drawing set for location and design intent.



QTY.	ITEM	ITEM #
	LINEAR LED LIGHT	



GERALD J. CALIENDO
ARCHITECTS

138-72 QUEENS BLVD.
BRIARWOOD, NY 11435



CORD MEYER
DEVELOPMENT COMPANY

PROJECT: Cord Meyer Green Redesign
ISSUE DATE: 11.09.22

SPECIFICATION

SOURCE Cosentino Dekton tiles

COLOR/FINISH Marble

DIMENSIONS

NOTES

Dekton tile in "Awake" for reception desk top and exterior finish

GENERAL INFO

All materials and methods of construction must comply with all applicable international, national, state, city, and local building codes. Certificate of compliance to be submitted to owner by product manufacturer. All materials and construction must be contract quality and comply with owner's standards and specification. Subcontractor to verify field measurements prior to purchase and fabrication. Refer to preambles for additional fabrication and installation requirements.

REFERENCE

Refer to GJC drawing set for location and design intent.



QTY.	ITEM	ITEM #
	DEKTON TILE IN "AWAKE"	



GERALD J. CALIENDO
ARCHITECTS

138-72 QUEENS BLVD.
BRIARWOOD, NY 11435



CORD MEYER
DEVELOPMENT COMPANY

PROJECT: Cord Meyer Green Redesign
ISSUE DATE: 11.09.22

SPECIFICATION

SOURCE Cosentino Dekton tiles

COLOR/FINISH Marble

DIMENSIONS

NOTES

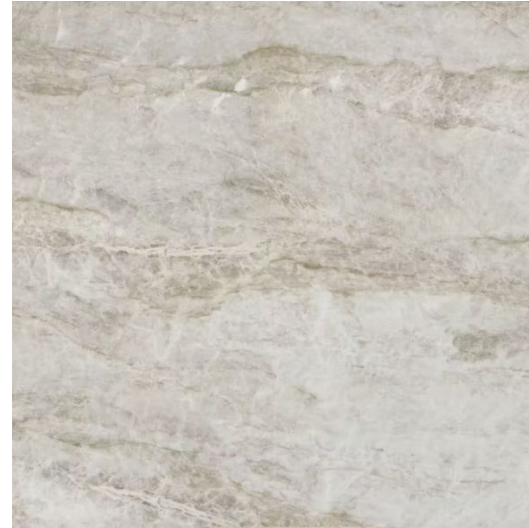
Dekton tile in "Taga" for reception desk top and exterior finish

GENERAL INFO

All materials and methods of construction must comply with all applicable international, national, state, city, and local building codes. Certificate of compliance to be submitted to owner by product manufacturer. All materials and construction must be contract quality and comply with owner's standards and specification. Subcontractor to verify field measurements prior to purchase and fabrication. Refer to preambles for additional fabrication and installation requirements.

REFERENCE

Refer to GJC drawing set for location and design intent.



QTY.	ITEM	ITEM #
	DEKTON TILE IN "TAGA"	ST-002



GERALD J. CALIENDO
ARCHITECTS

138-72 QUEENS BLVD.
BRIARWOOD, NY 11435



CORD MEYER
DEVELOPMENT COMPANY

PROJECT: Cord Meyer Green Redesign
ISSUE DATE: 11.09.22

SPECIFICATION

SOURCE

COLOR/FINISH White oak

DIMENSIONS

NOTES

White oak fluted wood panels for interior lobby

GENERAL INFO

All materials and methods of construction must comply with all applicable international, national, state, city, and local building codes. Certificate of compliance to be submitted to owner by product manufacturer. All materials and construction must be contract quality and comply with owner's standards and specification. Subcontractor to verify field measurements prior to purchase and fabrication. Refer to preambles for additional fabrication and installation requirements.

REFERENCE

Refer to GJC drawing set for location and design intent.



QTY.	ITEM	ITEM #
	WHITE OAK FLUTED WOOD	



GERALD J. CALIENDO
ARCHITECTS

138-72 QUEENS BLVD.
BRIARWOOD, NY 11435



CORD MEYER
DEVELOPMENT COMPANY

PROJECT: Cord Meyer Green Redesign
ISSUE DATE: 11.09.22

SPECIFICATION

SOURCE

COLOR/FINISH Bronze

DIMENSIONS

NOTES

Bronze paint finish for exterior and interior lobby banding

GENERAL INFO

All materials and methods of construction must comply with all applicable international, national, state, city, and local building codes. Certificate of compliance to be submitted to owner by product manufacturer. All materials and construction must be contract quality and comply with owner's standards and specification. Subcontractor to verify field measurements prior to purchase and fabrication. Refer to preambles for additional fabrication and installation requirements.

REFERENCE

Refer to GJC drawing set for location and design intent.



QTY.	ITEM	ITEM #
	BRONZE PAINT FINISH	



GERALD J. CALIENDO
ARCHITECTS