

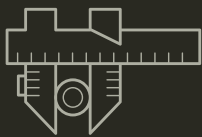
FATHOM

DIGITAL MANUFACTURING. REIMAGINED.

Sheet Metal Manufacturing Services

Comprehensive sheet metal prototyping, fabrication and finishing services.

From precision forming of small, complex parts to a full range of cutting, forming and finishing technologies for large sheet metal projects, we've got you covered. Our experts have decades of expertise and bring unmatched ingenuity to help you move your sheet metal projects from prototype to production quickly and cost-effectively.



Precision

We specialize in the precision forming of small, complex components, such as brackets, clips, wire guides and stands, as well as large sheet metal parts.



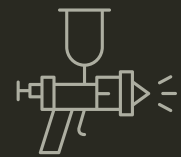
Expertise

Our craftsmen have decades of experience in building sheet metal prototypes and custom metal parts for a variety of customers and applications.



Speed

With multiple locations that specialize in sheet metal work, we help you quickly iterate your part designs and bring your products to market faster.



Finishing

We offer a variety of finishing options, from deburring and sanding to painting, powder coating, screen printing, kitting and assembly.

Simplify Your Supply Chain

We bring a value engineering approach to every project, ensuring that your parts can be produced cost-effectively and quickly. Whether your design is simple or complex, our experts manage every step of the process, from design assistance and metal fabrication to painting, screen printing, kitting and assembly. Fathom can handle any sheet metal need in any industry, including:

- Aerospace & Defense
- Automotive
- Electronics
- Industrial
- Life Sciences

Why Choose Fathom for Metal Cutting & Forming?

Fathom Manufacturing is a one-stop manufacturing solution for the world's leading companies. We combine a breadth of manufacturing technologies with an unmatched depth of engineering expertise. Our customers leverage our over 25+ manufacturing technologies to simplify their supply chains and shorten the time to market for new product innovations.

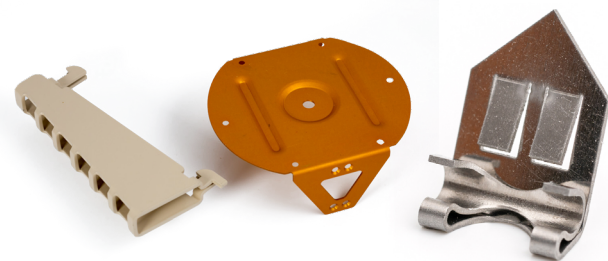
Sheet metal fabrication is one of Fathom's core competencies, and has been for decades. Our engineers translate your design into prototype parts to validate their form, fit and functionality. Using our advanced DFM capabilities, we can recommend improvements to make your parts more manufacturable and potentially reduce their cost. Finally, we'll work beside you every step of the way, from prototyping through production, to ensure a successful project.

Forming

Press Brakes // We employ state-of-the-art press brakes, which enable us to make precise bends in sheet metal to meet your specifications.

Put and Take Tooling // Semi-complex dies, actuated manually or by machine, perform multiple bending operations in one step to create complex features.

Four-Slide and Multi-Slide Manufacturing // Ideal for small and intricate springs, brackets, electrical terminals, clips and battery contacts.



Cutting

CNC Punching // Accurately process standard features and complex shapes as well as specialized features like countersinks, beads and louvers.

Laser Cutting // Excellent cut quality with minimal heat-affected zones; automation is available for increased efficiency of large production runs.

Water Jet Cutting // Precision cutting of materials up to 6 inches thick with a tolerance of 0.005-0.015 in.

Microcut™ Cutting // Exceptional precision for high-tolerance metal parts. It can cut materials up to 0.5 in. thick with a tolerance of 0.0005- 0.005 in.

Photo Chemical Etching // This is the process of selectively removing material using a chemical action. It is highly precise and produces flat, burr-free parts.

Wire EDM // Ideal for cutting tough metals with precise tolerances. It delivers a very precise cut that requires little or no additional processing.

Welding

MIG/TIG Welding // We offer automated and manual welding, depending on your project needs.

Spot Welding // Uses pressure and heat from an electric current to join two or more metal sheets.

Real Customers. Real Results.

VSi Parylene (VSi) provides advanced protective coating technologies for various industrial and consumer electronics, aerospace and medical applications. In developing its next generation POD Factory machine, they faced some manufacturing challenges that hindered its physical production and did not lend itself well to volume manufacturability. As a result, **VSi sought a unified partner with extensive manufacturing capabilities, engineering expertise, and quality assurances** to build machines that were both beautiful and scalable.

Fathom drew upon its highly trained technical staff to provide timely feedback on the geometry of the CAD file to ensure the design

for manufacturability, **validate the engineering aspects** of the new system, and **define which of its manufacturing processes would best** achieve the desired outcome.

As a result, VSi was able to slash its product development cycle by 50% with **Fathom's integrated, technology-agnostic approach and rapid response team**. VSi even created a second product line based upon this successful product development project.

50%
Shorter Product
Development Cycle



Talk to an **Expert**

Working with Fathom means easy access to Additive and Advanced manufacturing experts.

Contact us today, and let's transform the future of manufacturing together!

 go.fathommfg.com/expert

 expert@fathommfg.com

 877-FATHOM-8

02162024

Headquarters // 1050 Walnut Ridge Dr. Hartland, WI 53029

Offices // Hartland, WI | Tempe, AZ | Fremont, CA | Denver, CO | McHenry, IL
Newark, NY | Ithaca, NY | Elk Grove, IL | Ham Lake, MN | Round Rock, TX | China

FATHOM
DIGITAL MANUFACTURING. REIMAGINED.

FathomMfg.com