

# Is Royal Canin German Shepherd Dog Food Any Good? Read This First



Royal Canine is a sought-after brand for German Shepherd owners. As a result of increased demand, you may even experience difficulty purchasing their products depending on your location. It is not the cheapest kibbles out there. If you are wondering whether its quality justifies for the price, read on to find out more.

**Royal Canin German Shepherd Dog Food is a highly-quality meal with all the necessary ingredients for healthy skin, coat, bone and joints. Royal Canin also offers special formulas to address common health issues in German Shepherds like sensitive stomach, skin allergies, and other digestive issues.**

In this post, we will look at all the important facts about Royal Canin dog foods to help you decide whether or not it is the best choice for your German Shepherd Dog.

## Is Royal Canin A Good Choice?

Royal Canin has earned its reputation for being one of the best brands for pet dogs.

They have a wide selection of dog food formulated for different breeds and life stages. Their food is scientifically researched and tested to ensure that it is of the highest quality and meets the dog's specific nutritional requirements.

But is Royal Canin really a good choice?

Let's find out.

## Royal Canin Dog Foods For German Shepherds

Here are Royal Canin dry and canned for GSDs of all ages. These include dog foods for large breeds and those specially formulated for German Shepherds.

| Name  | Age/Weight                    | Main Ingredients                                  | Nutritional Content                         | Energy (Kilocalories)       | Price                       |
|---|-------------------------------|---|---|-----------------------------|-----------------------------|
| <a href="#">Breed Health Nutrition German Shepherd Puppy Dry Dog Food</a> | 8 weeks to 15 months<br>30 lb | Brewers Rice, Chicken By-Product Meal, Brown Rice | Protein- 28%<br>Fat - 14%<br>Fiber - 3.8%   | 331 per cup                 | \$139.95 for a 30 pound bag |
| <a href="#">Health Nutrition German Shepherd Adult</a>                    | 15 months plus                | Brewers rice, chicken by-product meal, brown rice | Protein- 22%<br>Fat - 17%<br>Fiber - 5.5%   | 321 per cup                 | \$139.98 for a 30 pound bag |
| <a href="#">Large Puppy Wet Dog Food</a>                                  | Up to 15 months               | pork by-products, chicken, pork liver,            | Protein- 6.8%<br>Fat - 3.5%<br>Fiber - 2.5% | 118 Kilocalories per sachet | \$20.23/lb                  |
| <a href="#">Health Nutrition Large Breed Dry</a>                          | 8 years plus senior           | Chicken by-product meal, brewers rice, wheat      | Protein- 25%<br>Fat - 15%<br>Fiber - 4.3%   | 308 Kcals per cup           | \$69.99                     |
| <a href="#">Canine Health</a>   | Mature                        | chicken,  | Protein- 7.%                                | 342 Kcals                   | \$71.77                     |

|   |                                     |  |   |                   |         |
|---|-------------------------------------|--|---|-------------------|---------|
| <a href="#">Nutrition. Mature Adult In Gel</a>            | adult dog                           | pork liver, chicken by-products              | Fat - 3%<br>Fiber - 2%                    | per can           |         |
| <a href="#">Canine Health Nutrition Adult In Gel</a>      | Over 10/15 months                   | Chicken, Pork Liver, Chicken By-Products     | Protein- 6.5.%<br>Fat - 3%<br>Fiber - 2%  | 386 Kcals per can | \$78.99 |
| <a href="#">Complete Health Nutrition Large Adult Dry</a> | Adult 15 months to 5years 56-100lbs | Chicken by-product meal, brewers rice, wheat | Protein- 24%<br>Fat - 15%<br>Fiber - 3.3% | 386 Kcals per cup | \$84.99 |

## Benefits Of Royal Canin Dog Food For German Shepherds?

There are definitely many brands out there for dogs but what sets Royal Canin apart is that is that they have foods specially tailored to meet the nutritional requirements of GSDs. The foods:

### A High Protein Diet

They particularly have high protein diets to help build the strong and solid muscular GSD bodies as well as support their high energy requirements ( GSDs are very active and athletic). Their [puppy dog food](#), for instance has 28% protein content which is perfect for the optimal growth of GSD puppies.

### All Essential Micronutrients Included

Royal Canin also contains other essential vitamins and minerals that are required for the overall health and growth of GSDs like Omega 3 & 6 fatty acids, phosphorus and sodium.

### Made With Safe And High-Quality Ingredients

Another benefit of choosing Royal Canin is that they have foods for GSDs with sensitive stomach and other allergies. Considering how prone GSDs are to stomach sensitivities, we think this makes Royal Canin a suitable dog brand for all GSD owners. Their ingredients do not cause stomach bloating, itching or any other problems that come with low quality foods.

### Low Calcium Diets

Royal Canin also ensures that all foods tailored for German Shepherds are low in calcium. This is important because, as large breeds, too much calcium intake could cause [Hip dysplasia](#).



Other benefits of Royal Canin dog food include:

- Highly digestible to prevent stomach upsets
- Highest quality and safety standards
- Highly palatable
- Easy to chew

## Are The Ingredients Safe?

All Royal Canin foods are totally safe.

They are made from high-quality ingredients. Plus, the company conducts extensive research on all its food batches to ensure that they are safe for dogs. They also test to make sure that the food meets [AAFCO requirements](#).

While their foods are safe, there have been a lot of concerns around some ingredients, more particularly corn, which seems to be one of the major ingredients in a lot of Royal Canin's recipes.

Contrary to what you may have heard peddled by other brands when marketing their foods, there is nothing biologically wrong with feeding dogs corn or corn gluten meal.

In addition to being a great source of carbohydrates and highly digestible, pet manufacturers also process corn to release proteins that are very important in a dog's diet.

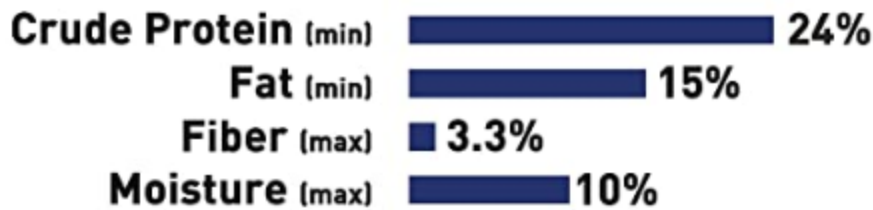
As long as it is high-quality corn, there is nothing to worry about.

## Is The Food Complete And Balanced?

Royal Canin dog food meets the AAFCO's nutritional guidelines. They contain all the essential nutrients needed for the overall health of dogs – proteins, fats, carbs, fiber, and water. All the nutrients are formulated in the right ratios as per the dog's breed, age, weight, and size.

For instance, below is a label from one of the Royal Canin German Shepherd foods showing the caloric content of the food, the list of ingredients, and the guaranteed analysis. This part of the label is very important to check because it will tell you whether or not the food will meet your dog's nutritional requirements.

## GUARANTEED ANALYSIS



## INGREDIENTS

Chicken by-product meal, brewers rice, wheat, brown rice, chicken fat, corn gluten meal, natural flavors, dried plain beet pulp, fish oil, calcium carbonate, monocalcium phosphate, salt, potassium chloride, sodium silico aluminate, choline chloride, L-lysine, vitamins [DL-alpha tocopherol acetate (source of vitamin E), L-ascorbyl-2-polyphosphate (source of vitamin C), biotin, D-calcium pantothenate, vitamin A acetate, niacin supplement, pyridoxine hydrochloride (vitamin B6), thiamine mononitrate (vitamin B1), vitamin B12 supplement, riboflavin supplement, vitamin D3 supplement, folic acid], trace minerals [zinc proteinate, zinc oxide, ferrous sulfate, manganese proteinate, manganous oxide, copper sulfate, calcium iodate, sodium selenite, copper proteinate], glucosamine hydrochloride, DL-methionine, chondroitin sulfate, rosemary extract, preserved with mixed tocopherols and citric acid.

## CALORIE CONTENT

This diet contains 3755 kilocalories of metabolizable energy (ME) per kilogram or 360 kilocalories ME per cup on an as fed basis (calculated).

Using the guaranteed analysis above, let's check whether or not the food meets the AAFCO's nutritional requirement for dogs. The nutrients should be within the minimum and maximum ranges given by AAFCO.

|                                | Puppy                           | Adult                                    | Senior/Aging                             |
|--------------------------------|---------------------------------|--|--|
| Royal Canin                    | Protein- 28%<br>Fat - 14%       | Protein- 22%<br>Fat - 17%                | Protein- 25%<br>Fat - 15%                |
| AAFCOs recommended requirement | Protein- 22% to 30%<br>Fat - 9% | Protein- 18% to 29%<br>Fat - 5.5% to 25% | Protein- 18% to 29%<br>Fat - 5.5% to 25% |

As you can see, Royal Canin is right within the minimum and maximum requirements.

### What Do Other Users Have To Say?

Many dog owners have praised Royal Canin food for being so flavorful that even picky eaters cannot resist. Their wet food particularly seems to receive the most praise for high palatability.

Dog owners are also happy with the food's digestibility. Except for the case where your dog is allergic or intolerant to certain ingredients in the food, you shouldn't worry about your dog developing digestion issues when on Royal Canin.

*This particular breed specific brand is probably better than most in my opinion. I say this because they go a bit farther than other companies. This one has specific kibble shape for the shepherd jaw shape. Never seen that before. It also has the bone and joint additives that lubricate the large joints. My dog really loves this stuff. Her coat shines, eyes bright, energy level very high, and wonderful poops! Couldn't ask for more!*

EssentiallyBlonde

*This is a GSD number five for me, I have loved them my whole life! My dog loves this food! He would rather eat it than some canned food. it keeps him moving comfortably, and he has the most beautiful coat! Like a black panther! So shiny, silky and soft!*

Stacey

*I've raised all of my puppies on Royal Canin Breed Specific. I honestly can't tell you if it is worth the extra money. But all my dogs have grown up healthy with beautiful coats and to a perfect size.*

Kevin

*I have a very picky eater puppy, and after trying multiple, grain-free, organic, blah blah, options I decided to go with a brand that I was most familiar with, Royal Canin. I cannot rave enough about this product. My puppy loves the taste, I do not even have to persuade him to eat anymore. I can even hide his vitamin supplement, which he hates in the food bowl and he will gobble it all down like a champ.*

Finn2018

*It's healthy for my dogs. No stomach upset. No scratching and digging from allergic reactions like other brands. It's quite expensive, but like the saying goes, you are what you eat!*

Roy P Mitchell Home Improvements

You can check out [more reviews here](#).

## Is The Price Affordable?

Royal Canin is a premium brand, which means it isn't cheap. For instance, a Royal Canin Dry Food for Adult dogs costs \$84.99 while a similar dog food from a cheaper brand goes for \$62.98.

And while the price is slightly on the high side, their foods are made from high-quality ingredients. Also, the fact that they have different formulas for different nutritional needs, tends to push their prices up. Plus, they do intensive research on all their diets.

Does this justify the high cost? Well, it does. Royal Canin goes an extra mile than most other brands and its therefore a no brainer that the cost will be slightly high as well.

However, depending on where you buy the food, you may be able to find better deals. Also, there are pet stores that are always running seasonal sales and bundles. This may help bring down the cost.

## Do Vets Recommend Royal Canin?

Yes, Royal Canin comes so highly recommended by a majority of vets. Contrary to what most people believe, the company doesn't give kickbacks or rebates to vets to market their food. Instead, vets feel safe recommending it because Royal Canin dog foods meet the nutritional requirements set out by AAFCO. Also, their recipes have undergone extensive dietary research and feeding trials and have proven that they are safe and healthy over the decades. Plus, they have a great selection of formulas for specific pet health issues.

"We promote foods based on experience and scientific studies indicating which foods produce healthier pets," says [Andie Lenhard](#), a vet with over three decades of experience in the field.

## Which Is The Best Royal Canin Dog Food For German Shepherds?

Royal Canin has plenty of dog food formulas tailored for different dogs. Some of their foods are specially made for GSDs. However, any food tailored for large breeds is still good.

Here are the best Royal Canin dog foods for German Shepherds.

### Best Royal Canin Dog Food For Puppies

[Royal Canin Breed Health Nutrition German Shepherd Puppy Dry Dog Food](#)

#### **Why do we like it?**

This is an exclusively formulated dog food for German Shepherd puppies. It is designed to meet the specific nutritional needs of Shepherd puppies. Plus, the kibble's shape and texture are also designed for a puppy's easy chewing.

**Primary ingredients:** Brewers Rice, Chicken By-Product Meal, Brown Rice, Oat Groats, Corn Gluten Meal

#### **Features**

- Ideal for puppies between 8 weeks and 15 months old
- Uniquely shaped kibble to encourage chewing

- Contains highly digestible proteins and carbohydrates for easy digestion
- Formulated with fiber to help with bowel movement and stool quality
- Supports healthy bone and joint development
- Contain vitamins and antioxidants necessary for a puppy's strong immune system and prebiotics for a healthy digestive system and balanced intestinal flora.

## Best Royal Canin Dog Food For Adults

### [Royal Canin Breed Health Nutrition German Shepherd Adult Dry Dog Food](#)

#### **Why do we like it?**

It is specially formulated for the unique nutritional needs of purely bred adult German Shepherds from 15 months old. It contains a blend of ingredients to support healthy coat development. If your dog sheds a lot, this is the best recipe for them.

**Primary ingredients:** Brewers rice, chicken by-product meal, brown rice, oat groats, chicken fat

#### **Features**

- Promotes a healthy skin and a shiny and soft coat thanks to the EPA and DHA nutrients from fish oil
- Kibble has special texture and shape that encourages chewing
- Contains highly digestible ingredients that promote healthy digestion
- Contains fibers for an easy bowel movement and prevents loose stools
- Formulated with Glucosamine and Chondroitin for healthy and strong bones and joint which is crucial in large breed dogs

## Best Royal Canin Dog Food For Seniors

### [Royal Canin Size Health Nutrition Large Breed Aging Dry Dog Food](#)

#### **Why do we like it?**

Royal Canin health nutrition is specifically made for aging dogs from the age of 8 years onwards and weighing between 56 and 100 pounds. It is made with an exclusive blend of nutrients to support quality long life. The kibble is specialized for aging dog's jaws.

**Ingredients:** Chicken by-product meal, brewers rice, wheat, corn gluten meal, chicken fat



### Features

- Easy to chew
- Easy to digest which prevents digestive problems
- Supports aging dog's bone and joints health
- Contains a balanced amount of fiber to help in digestion and bowel movement

## Best Royal Canin Dog Food For Sensitive Stomach

### [Royal Canin HP Hypoallergenic Dog Food](#)

#### Why do we like it?

This hydrolyzed protein formula is formulated for dogs with adverse skin allergies and food sensitivities.

**Ingredients:** Rice, hydrolysed soya protein isolate, animal fats, hydrolysed poultry liver, beet pulp

#### Features

- Contains easily digestible starch and proteins
- Nutritionally complete and balanced diet for dogs with sensitivities
- Supports a healthy digestive system
- Promotes healthy skin

**Caution:** This food is strictly sold under the vet's supervision.

## Conclusion

Royal Canin is a reputable pet food brand. They have a wide selection of formulas to choose from, including foods designed for dogs with specific health issues. We think Royal Canin is a great choice for German Shepherd dogs of all ages. Their GSD food line is nutritionally balanced to meet all the unique needs of purely bred GSDs. If you are okay with the price, we think it's worth a try.

## Further Questions

### Is Royal Canin good for GSD puppies?

Royal Canin is good for all GSD puppies, including those with sensitivities. You just have to choose the best recipe for your puppy based on its age, weight, and health condition.

### How many times a day should a puppy eat Royal Canin?

Depending on their age, a puppy should be fed on Royal Canin dog food three to four times a day.

**Can Royal Canin cause diarrhea in dogs?**

Unless a dog has an allergy or sensitivity to a specific ingredient in the dog food, they shouldn't experience any diarrhea when on Royal Canin food.

**Does Royal Canin make dogs pee more?**

No, Royal Canin dog food does not cause dogs to pee anymore or less. How much a dog will pee is based on how much water they consume. Even wet canned food does not cause dogs to pee more because it contains just the right amount of water needed for digestion.