



# NEW FOR 2022

## THE MOST IMPRESSIVE HOTELS & ATTRACTIONS COMING SOON

Despite facing the various challenges and long-lasting impacts of the COVID-19 pandemic, beloved luxury hotel brands and entertainment and cultural organisations have continued to make headway on major development plans, making 2022 a truly exciting year for new hotels and attractions. From fairytale-like theme parks inviting visitors into the wonderful world of Japanese animation to wellness retreats set in eco-friendly oases and city centre hotspots revealing layers of intriguing history, there is much to capture your attention and push you to book that next flight. To make decisions a little easier, we have compiled the most impressive hotels and attractions you should look out for in the coming year.



Image by: forbes

### 10 | Habitas Todos Santos

Baja California Sur, Mexico

Following two successful launches in Tulum and Namibia, the Habitas brand is now breaking ground in Mexico's Todos Santos – a stunning sleepy town steeped in natural beauty, cultural riches and historical relevance in Baja California Sur. Located just an hour's drive from San Jose del Cabo Airport, the beachfront property spans a total of 24 coastal acres and features 80 rooms, to be released in two phases. Here guests will be able to wake to the distant echoes of crashing waves and whales breaching the surface. Further property highlights include an alluring ocean-front pool, farm-to-table restaurant, organic herb garden and holistic spa.



Image by: globetrender

As with the other two Habitas properties, Habitas Todos Santos will focus significantly on wellness, sustainability and community. Embracing the slow-paced lifestyle of Baja Sur, the hotel will connect its guests with nature's elements through integrated wellness, thoughtful design, and a broad range of outdoor programmes. Surfing until sundown, diving in the Sea of Cortez, and hiking the trails of the Sierra de la Laguna are just some of the unique adventures to be had at Habitas Todos Santos. In order to support local communities and resources, Habitas has further made sure to create sustainable micro-economies by purchasing a local supply chain of food and furniture and has also initiated several training programmes for those seeking jobs on the property and beyond.



Image by: forbes





## 9 | Sensei Porcupine Creek

California, USA

Sensei, known for leveraging technology to promote healthy lifestyle practices and curate evidence-led wellness programmes, is set to open its first standalone wellness retreat in the first half of 2022. Sensei Porcupine Creek will convert a 230-acre private estate nestled against the Santa Rosa Mountains in Rancho Mirage, California, into an exclusive wellbeing retreat, offering unparalleled service and privacy. The tranquil and intimate setting will feature 22 luxurious accommodations, including cosy Main House rooms, deluxe garden suites and adjacent private villas, each of which will be designed around open-concept living spaces with fully equipped kitchens, dining and living rooms.

A desert oasis, the retreat will further feature a state-of-the-art diagnostic centre, private golf course, relaxing swimming pool, yoga and fitness pavilions, and a range of culinary offerings created in collaboration with Nobu. Curated wellness programmes and tailored activities, such as spa treatments, meditation, daily hikes, tennis matches, and nutrition consultations, will be provided based on the 'Sensei Way', which distils Sensei's co-founder, Dr David Agus' knowledge of preventative health science into three simple paths for everyday living: move, nourish and rest. All activities will be led by a highly trained team of Sensei Guides and practitioners who hold advanced degrees in their respective fields.



## 8 | Rosewood Doha

Doha, Qatar

Housed in two striking towers inspired by the underwater forms, specifically the local coral reef formulations, found in the surrounding Arabian Gulf, Rosewood Doha and Rosewood Residences Doha will consist of an ultra-luxury hotel with 185 exquisite guestrooms and suites, 173 serviced apartments for longer-term stays and 300 residences available for purchase. Located in Lusail City, the complex architectural project is set to be the latest jewel in the brand's Middle Eastern collection, its conceptualisation realised by Chief Architect Ibrahim M. Jaidah. As a prominent Qatari architect, Jaidah is known for his unique design philosophy, which ensures built structures respond to the natural environment in which they belong and the cultural and social context in which they will function.

The hotel will additionally be one of the city's most dynamic culinary destinations, offering guests eight innovative eateries, including a bistro, coffee shop and deli, three speciality restaurants, and several lounges. For guests seeking R&R, a variety of treatments and facilities will be available at the Sense Spa, and if getting your blood pumping is more to your taste, state-of-the-art training equipment can also be found at the on-site fitness centre. Rosewood's signature Manor Club executive lounge concept will further soar to new heights in Qatar, offering Club Room and Suite guests curated services with added convenience and privacy.







## 7 | Viceroy at Ombria Resort

The Algarves, Portugal

Spread across more than 150 hectares of serene, secluded and natural landscape in the heart of Portugal's Algarve, Ombria Resort looks to usher in a new generation of low-density resort developments that place sustainability, the environment and support of local heritage at its core. Surrounded by rolling green hills, meandering rivers and lush cork and oak forests, the idyllic development is comprised of a five-star hotel (Viceroy at Ombria Resort), as well as 65 branded Viceroy residences, and the Oriole Village – a collection of 83 apartments, townhouses and semi-detached or detached villas designed to reflect a traditional Barrocal village.

The resort will open in phases, with the first set in early 2022, debuting the luxury Viceroy hotel. Situated on a hilltop with 360-degree views of the gorgeous green landscape, Viceroy at Ombria Resort will feature 76 guestrooms and suites, expertly designed to bring the outside in, with materials sourced from local artisans. Two large heated swimming pools will also be available (one for families and one for adults-only), as well as a state-of-the-art fitness centre, five restaurants and bars, a kid's club, conference centre, and spa – equipped with eight treatment rooms, two saunas, a Turkish bath, Jacuzzi and a beauty salon. In keeping with the Algarve's reputation as a golfer's

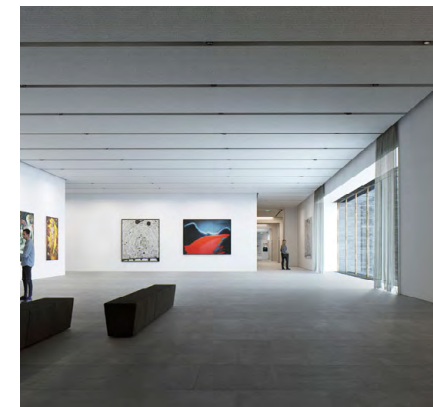


paradise, Ombria Resort will additionally have its own 18-hole course, spanning 6,000 metres with stunning views of the surrounding countryside. Designed by the talented Jorge Santana da Silva, the Ombria Resort golf course will take advantage of the landscape's natural features, incorporating several exciting river crossings. The conveniently located clubhouse will also feature a gym, locker rooms with a sauna and Jacuzzi, and an outdoor swimming pool.

## 6 | National Museum of Art, Architecture and Design

Oslo, Norway

Situated on the capital Oslo's harbour, Norway's newly expanded National Museum of Art, Architecture and Design will be the largest art museum in the Nordic region, on track to open in June 2022. Having initially been established between 2003-2005, with a merger of four museums ranging in fields, the national museum has since expanded to cover a mighty area of 54,600 metres-squared, almost twice as much as its former total space. Comprehensive displays will span two floors, incorporating almost 90 rooms, and guests will also be able to browse through the largest art library in the Nordics, as well as enjoy hot drinks and sweet treats at the café and open-air roof terrace.



Over 400,000 objects will make up the museum's permanent collection, ranging from medieval tapestries to modern sculptures, textiles, furniture, architectural models, and contemporary artworks, all of which will meet and interact in new contexts. There will be rooms dedicated to the museum's significant Edvard Munch collection, including world-famous *The Scream*, as well as displays presenting works by renowned Norwegian architect Sverre Fehn. The newly outfitted Light Hall will additionally be filled with an extensive collection of Norwegian contemporary art, with new works from more than 100 artists of all ages and artistic fields.

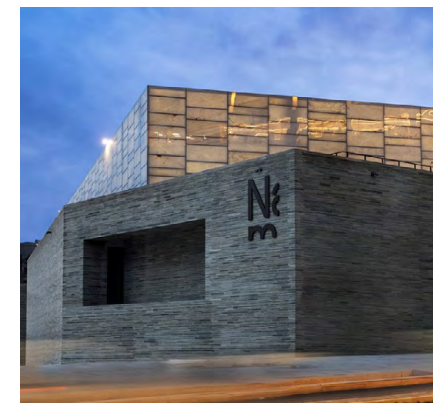






Image by: businessstraveller

## 5 | Raffles London at The OWO

London, England

Housed within the iconic Grade II\* listed Old War Office on Whitehall, once the headquarters of Winston Churchill during World War II, Raffles London at The OWO is set to be a landmark opening late 2022. Closed to the public for more than a century, the iconic site (originally completed in 1906) has witnessed world-shaping events, having welcomed some of the most influential political and military leaders of the 20th century. It is also the location where Ian Fleming was inspired to write *James Bond*, and where several Bond movies were filmed, as well as, more recently, serving as a backdrop to the Netflix drama series *The Crown*. Needless to say, culture and history buffs are to be well served at the reborn site.

Having undergone a monumental transformation over the last five years, Raffles London at The OWO will not only house 120 rooms and suites but will also play host to Raffles Hotels & Resorts' first branded serviced residence in Europe – The OWO Residences by Raffles, complete with 85 residences. The service hallmarks of the prestigious Raffles brand – gracious and intuitive staff, personalised attention and a warm and welcoming ambience will be delivered and maintained for both hotel guests and residence owners.

Remodelling this longstanding emblem of empire and military without losing its very charm is sure



Image by: Raffles London

to be Raffles Hotels & Resorts' biggest challenge yet. As such, UK-based EPR Architects and New York-based designer Thierry Despont have made sure to preserve many of the property's original architectural details while still allowing room for updated design elements. The 760,000 square feet property will further feature 11 distinct restaurants and bars, a boutique shop and a 600 seated-capacity grand ballroom. A destination wellness spa and members club curated in partnership with wellness brand Guerlain and movement specialists PILLAR will also be available, complete with a 20-metre indoor pool, separate vitality pool and nine treatment rooms where guests can indulge in numerous rituals, scrubs and massages carried out by a team of attentive professionals.

## 4 | Six Senses Rome

Rome, Italy

The Six Senses urban collection heads to Rome, with the brand's first property in Italy, set to open within the 18th-century Palazzo Salviati Cesi Mellini in late 2022. Protected by the Roman municipality and UNESCO listed, the boutique hotel's main façade, which overlooks Via del Corso, is being restored to its grand origins – the central staircase well preserved. Mindful of the building's authentic heritage, renowned interior designer Patricia Urquiola has made it her mission to gently fuse the property's existing architectural elements with a contemporary vision of hospitality. For example, the open kitchen trattoria and bar will lead out to a gallery and seating area complete with preserved travertine marble, oak, and bronze.

In keeping with Six Senses' gift for distinctive design, each of the hotel's 95 quirky guest rooms and suites will each feature differing decorations. To further uphold the brand's reputation, the hotel will offer an on-site restaurant serving modern Italian fare that has been made with 100% natural, locally sourced ingredients. Seasonal food menus will be based on natural botanicals and courtyard garden-harvested greens paired with house-made bitters, tonics and tinctures. Guests can further learn to harness the power of local herbs and plants at the Alchemy Bar in a private or group setting, or discover more about sustainability at the Earth Lab. If a day of rest and rejuvenation is more to your taste, Six Senses Rome will also house a signature spa complete with a range of treatment rooms, Roman baths and a fitness centre.



Image by: hospitality-on





Image by: royist

### 3 | Wildflower Farms

New York, USA

Auberge Resorts Collection, the award-winning portfolio of one-of-a-kind luxury hotels, resorts and residences, will open Wildflower Farms in autumn 2022. Located 90 minutes from New York City and nestled within 140 secluded acres in the ever-green Hudson River Valley, the resort aims to be a verdant escape for the city's residents and tourists alike. The expansive premises will house a namesake farm, heirloom gardens, orchards, as well as provide access to the outstanding beauty of the nearby Mohonk Preserve – a private reserve boasting miles of dedicated hiking and biking trails, and world-class rock climbing opportunities. Several tennis courts and a pavilion-style open-air gym with an attached movement studio will further ensure guests maintain fitness routines.

Focusing exclusively on nature and wellness, Wildflower Farms looks to blur the line between indoors and outdoors, offering 65 freestanding accommodations outfitted with wood-clad ceilings and floors, nubby wool fabrics, fireplaces, wooden decks, as well as a range of modern amenities. Guests can choose from bungalows, cottages and suites. A place of exploration and expansion of the mind and spirit, the resort will further provide a range of exciting outdoor activities that aim to help visitors engage with the farmland, such as foraging, as well as healing treatments at the 9,000 square-foot Auberge Spa. Outdoor hot tubs, an indoor saltwater pool and a variety of single and couple treatment rooms will also be available here.



Image by: prweb

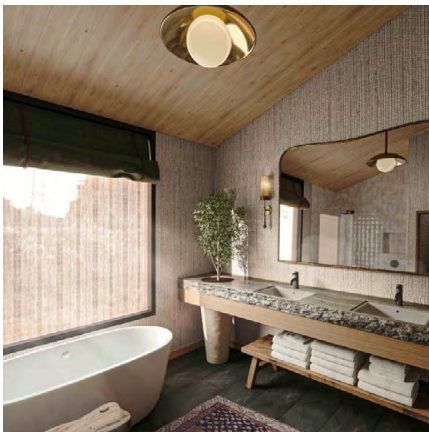


Image by: royist

### 2 | Rock House

Providenciales, Turks and Caicos

A dramatic, secluded beach backing onto a 25-foot limestone cliff surrounded by lush native vegetation and ancient trees sets the scene for Grace Bay Resorts' latest venture: Rock House. A true first for the coral islands of Turks and Caicos, this unique resort and residential complex will be located on the north coast of Providenciales upon a majestic 14-acre oceanfront site. Capturing the allure and elegance of the south of France, Capri and the Mediterranean coast, the distinctive resort will offer the utmost privacy with just 42 accommodations and homes making up the entire complex.

Envisioned by celebrated interior designer Shawn Henderson and Turks and Caicos leading architects Coast, Rock House will draw from its native soil to create premium cottages that capture the beauty of the resort's surroundings while incorporating all the modern furnishes expected of a contemporary setting. 13' vaulted ceilings, expansive bathrooms and bedrooms, private pools and unparalleled views over the Atlantic are to be expected. The resort will additionally feature a 100-foot infinity pool, perched on the cliff-side, a relaxing spa, an energising fitness centre, tennis courts and a newly constructed jogging trail. A restaurant and bar will also sit on the hilltop at which guests can enjoy expertly crafted cocktails, light snacks and more filling meals while taking in the breathtaking view.



Image by: ihw



Image by: propertylistings



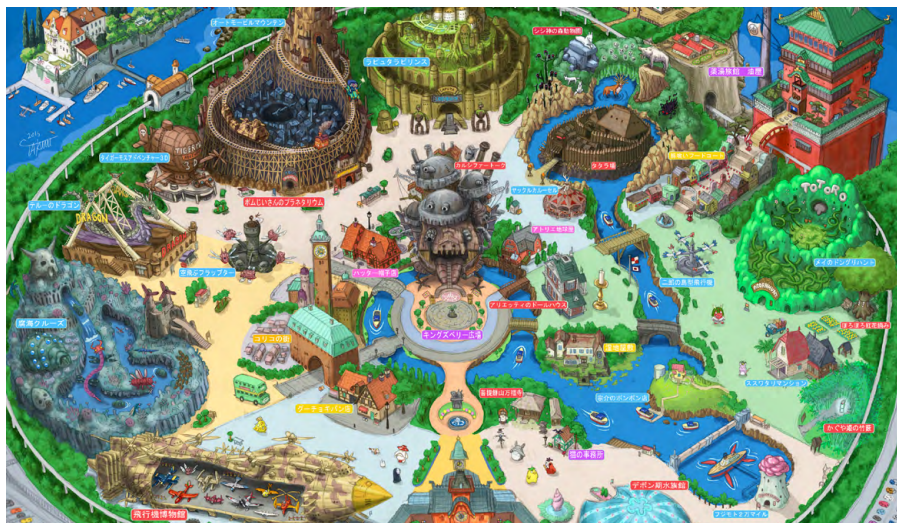


Image by: soranews24

# 1 | Studio Ghibli Park

Nagakute, Japan

Studio Ghibli, the famed Japanese animation house responsible for anime classics such as *Spirited Away*, *My Neighbour Totoro*, and *Princess Mononoke*, announced plans for the highly anticipated Ghibli Park back in 2018, with an aim to bring the beloved films to life. Since 1984, Hayao Miyazaki's fantastical creations have often served as an introduction to the wider world of anime and have obtained a cult following all on their own. The films now number more than 20, with Miyazaki currently out of retirement and working on an updated version of *How Do You Live?* (1997). Despite having faced several disruptions due to COVID-19, the theme park is now set to open in autumn 2022, with three of its five themed lands making a debut. Youth Hill, Ghibli's Grand Warehouse and Dondoko Forest will be the first to open, with Mononoke Village and Valley of Witches set to open later in 2023.

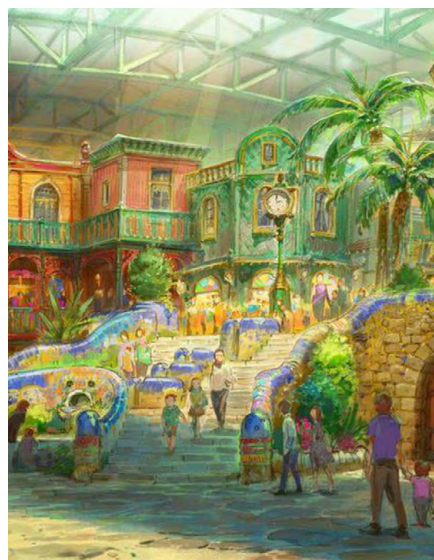


Image by: polygon

Not to be confused with the existing Ghibli Museum in Tokyo, the new attraction will be located within Aichi Earth Expo Memorial Park, the former site of the 2005 World Expo. Nestled in the lush countryside east of the city of Nagoya, the park is about a three-hour journey from Tokyo, one made easy by Japan's efficient train system and easy-to-use rail

passes. Expo Park itself has long been a favourite amongst Ghibli fans, as it features a full-scale replica of the home of Mei and Satsuki Kusakabe from *My Neighbour Totoro*. The 200 hectares of existing land will now house various exhibition centres, further movie set replicas, themed play areas, galleries, cinemas and smaller rides.

## Five themed lands

Located at the park's north entrance, Youth Hill will be majorly dedicated to the film *Howl's Moving Castle*, complete with an observation tower housing a giant elevator offering panoramic views of the park from above. Late 19th-century steampunk elements will further be found throughout the area, as will European-style brick buildings reminiscent of the Seiseki-Sakuragaoka Tokyo neighbourhood antique shop from *Whisper of the Heart*. Great Ghibli Warehouse will be situated on the former site of a large indoor swimming pool. The attraction will remain indoors, enjoyed any time of year regardless of the weather, and will incorporate a children's playground, cinema, numerous shops and restaurants, as well as a range of revolving exhibits exploring the studio's 35-year history. The dining section will notably be based on the best-loved 2001 film *Spirited Away*. Resembling scenes from *My Neighbour Totoro*, Dondoko Forest will feature attractions that echo the Shōwa period (1926-1989). Its surrounding area will become the ever-green rural landscape from the film, complete with countless pristine paths and walking routes.

In 2023, the park's creators will add Mononoke Village, which will be modelled on Princess Mononoke's setting of Irontown (Tatara-ba), named for a traditional Japanese metal smelting furnace. This themed land hopes to transport visitors to the Muromachi period (1336-1573), in which the film is set, and will further feature a range of mystical creature sculptures, including one dedicated to the boar god Lord Okkoto and a Tatarigami spirit monster. Additionally, Witch Valley will house further attractions themed after *Kiki's Delivery Service* and *Howl's Moving Castle*, with plans to include a four-to-five storey replica of Howl's castle (that, unfortunately, will not move) and Karikiya – the home of Kiki and her parents.



Witcher Valley - Image by: Studio Ghibli

### A PLEDGE OF SUSTAINABILITY

In an effort to celebrate the natural beauty that inspired much of Studio Ghibli's lush animation, both the studio and its project partner, the Aichi Prefectural Government, have vowed to preserve the natural surroundings making up the Aichi Earth Expo Memorial Park. As such, the environmentally-friendly theme park will favour themed nature trails over enormous roller coasters typically associated with and expected of larger amusement parks. This is further in an effort to truly immerse visitors of all ages into the worlds of the various anime classics, allowing guests to get a sense of what it would be like to exist within one of Miyazaki's magical countryside landscapes.

The project partners have additionally stated that they will not cut down any trees or undertake any harmful construction to make space for future attractions that could impair the area's function as a city park. The team have also agreed to make effective use of existing facilities and unused lands within the park. Accordingly, the Dondoko Forest will be situated in the section of the park that is already home to Satsuki and Mei's house from *My Neighbour Totoro*, and the Witches Valley will make use of a previously abandoned area to mimic the wastelands found in *Kiki's Delivery Service* and *Howl's Moving Castle*. The agreement also states that the redesign must promote the park as a place visitors can enjoy exploring on foot, and that Studio Ghibli's designs have to seamlessly be able to coexist with events and activities that already take place in the area.