

LET ME
BE CLEAR
PSORIASIS WILL NOT STOP ME

SILIQ[®]
(brodalumab) injection
210 mg/1.5 mL



Tired of wrestling with other biologics? **CONSIDER SWITCHING TO SILIQ**

Patient Starter Folder

What is SILIQ?

SILIQ[®] injection is a prescription medicine used to treat adults with moderate to severe plaque psoriasis:

- who may benefit from injections or pills (systemic therapy) or phototherapy (treatment using ultraviolet light treatment) **and**
- who have tried another systemic therapy that didn't work or stopped working

It is not known if SILIQ is safe and effective in children.

IMPORTANT SAFETY INFORMATION

What is the most important information I should know about SILIQ?

Suicidal thoughts and behavior: Some patients taking SILIQ have had suicidal thoughts or ended their own lives. This risk is higher if you have a history of suicidal thoughts or depression. It is not known if SILIQ causes these thoughts and actions. Get medical help right away or call the National Suicide and Crisis Lifeline at 988 if you or a family member notices that you have any of the following symptoms:

- new or worsening depression, anxiety, or mood problems
- thoughts of suicide, dying, or hurting yourself
- attempt to commit suicide, or acting on dangerous impulses
- other unusual changes in your behavior or mood

Please see additional Important Safety Information throughout and enclosed full Prescribing Information, including Boxed Warning about suicidal ideation and behavior, and Medication Guide, or visit [SILIQ.com](https://www.siliq.com).

Make SILIQ your 1st choice for a second-line biologic

SILIQ treats moderate to severe plaque psoriasis differently.

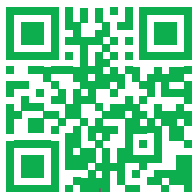


Actual SILIQ patient who has failed on previous biologics.

We get it. You've been looking for the right treatment for moderate to severe plaque psoriasis for way too long. If you and your doctor are preparing to switch to SILIQ, we have good news: **SILIQ works differently**—it may be what finally makes a difference for you.

Discover the SILIQ difference...

See before-and-after photos



links to: <https://www.siliq.com/>

Learn how SILIQ works



links to: <https://www.siliq.com/hcp/how-siliq-works/>

Save on SILIQ



links to: <https://www.siliq.com/savings-support/siliqsavings/>

IMPORTANT SAFETY INFORMATION (cont'd)

Because of your risk of suicidal thoughts and behavior during your treatment with SILIQ, SILIQ is available only through a restricted distribution program called the SILIQ Risk Evaluation and Mitigation Strategy (REMS). SILIQ can only be prescribed by a healthcare provider certified with the program.

Please see additional Important Safety Information throughout and enclosed full Prescribing Information, including Boxed Warning about suicidal ideation and behavior, and Medication Guide, or visit [SILIQ.com](https://www.siliq.com).

How does SILIQ work?

There are many proteins that cause inflammation and are thought to play a role in moderate to severe plaque psoriasis. Four of these proteins are part of a group that

your doctor may call the "IL-17 family." **SILIQ is the first and only treatment that blocks all 4.**

Treatment targets

TNF-Alpha

Enbrel® | Remicade® | Humira® | Cimzia®

IL-12/IL-23

Stelara®

IL-23

Tremfya® | Ilumya® | Skyrizi®

IL-17A

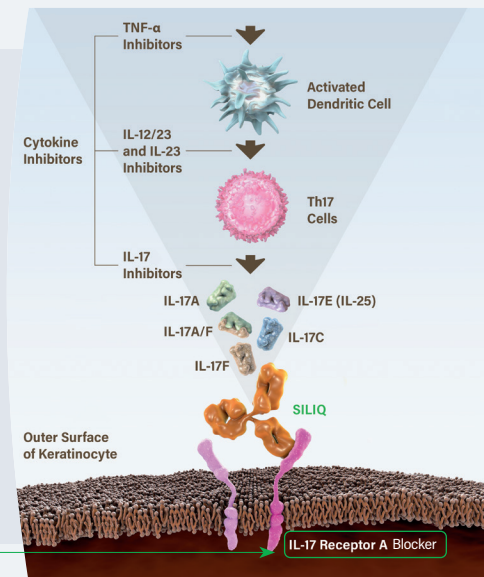
Cosentyx® | Taltz®

IL-17A+IL-17F

Bimzelx®

IL-17 Receptor A

SILIQ®



IMPORTANT SAFETY INFORMATION (cont'd)

Your healthcare provider will give you a SILIQ patient/wallet card about symptoms that need medical attention right away. Carry the card with you during treatment with SILIQ and show it to all of your healthcare providers. SILIQ is only available through pharmacies that participate in the SILIQ REMS. Your healthcare provider can give you information about how to find a participating pharmacy. For more information, go to www.SILIQREMS.com or call 1-855-511-6135.

Please see additional Important Safety Information throughout and enclosed full Prescribing Information, including Boxed Warning about suicidal ideation and behavior, and Medication Guide, or visit [SILIQ.com](https://www.siliq.com).

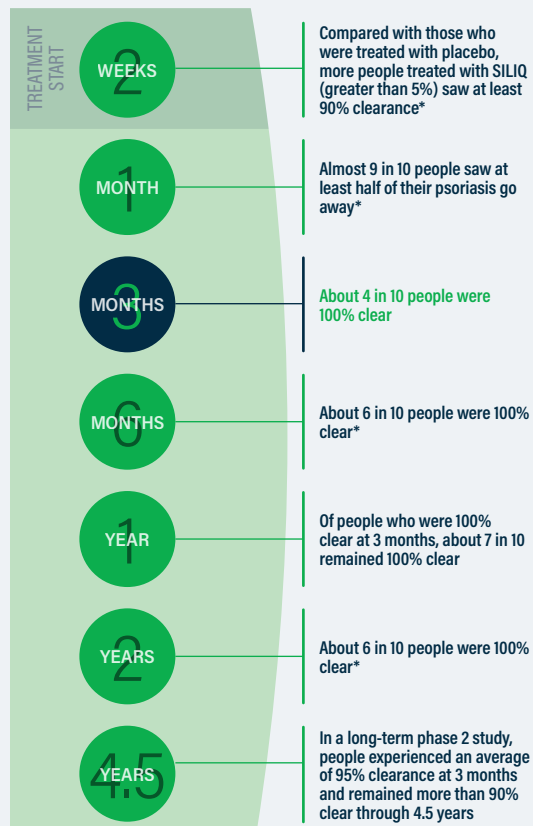
IL, interleukin; TNF-α, tumor necrosis factor-alpha.

SILIQ®
(brodalumab) injection
210 mg/1.5 mL

What you can expect with SILIQ

Three key clinical studies of patients with moderate to severe plaque psoriasis looked at how well SILIQ clears the skin, how fast it works, and how long it lasts.

Highlights from these studies, as well as 1 additional long-term study, are on the left side of this spread. Check them out to see when you might expect to see results. Keep in mind that results will vary.



How many biologics have you tried?

One study found that more than 5 in 6 people treated with SILIQ were at least 75% clear at 1 year, even if they had previously tried up to 3 or more biologics that were unsuccessful. (Remember, everyone responds to SILIQ differently—your results may differ.)

*The results at 2 weeks, 1 month, 6 months, and 2 years were not key study endpoints. The results were considered observational only, which limits their applicability.

IMPORTANT SAFETY INFORMATION (cont'd)

Serious Allergic Reactions: Get medical help right away if you get any of the following signs or symptoms of a serious allergic reaction including swelling of the face, lips, or tongue, trouble breathing or swallowing, itching, dizziness or feeling faint, rash, hives, or redness all over your body, or chest pain or tightness.

Please see additional Important Safety Information throughout and enclosed full Prescribing Information, including Boxed Warning about suicidal ideation and behavior, and Medication Guide, or visit SILIQ.com.

See the difference with SILIQ

Now that you know that SILIQ has helped thousands of people like you achieve completely clear skin, you probably want to see some of the results too.



These photos are of actual patients treated with SILIQ. Photos have not been retouched. Individual results may vary.

IMPORTANT SAFETY INFORMATION (cont'd)

Serious Infections: SILIQ may lower the ability of your immune system to fight infections and may increase your risk of infections:

- Your healthcare provider should check you for tuberculosis (TB) before starting treatment with SILIQ and may treat you for TB before starting SILIQ if you have TB or a history of it

Please see additional Important Safety Information throughout and enclosed full Prescribing Information, including Boxed Warning about suicidal ideation and behavior, and Medication Guide, or visit SILIQ.com.

SILIQ
(brodalumab) injection
210 mg/1.5 mL

Of course, individual results will vary, but these photos are of real people who were treated with SILIQ. They have not been retouched.



This patient was previously on Humira®, Cosentyx®, and Skyrizi®, respectively.



This 51-year-old man was **prescribed SILIQ by his doctor**. At the time, psoriasis covered 80% of his body. Just 3 months later, he was 100% clear.

These photos are of actual patients treated with SILIQ. Photos have not been retouched. Individual results may vary.

IMPORTANT SAFETY INFORMATION (cont'd)

Serious Infections (cont'd)

- You and your healthcare provider need to watch closely for **signs and symptoms of infection** during treatment with SILIQ, including fever, sweats, chills, shortness of breath, stomach issues, muscle aches, cough, sore throat or trouble swallowing, warm/red/painful skin sores, burning while urinating, or more frequent urination than normal

Please see additional Important Safety Information throughout and enclosed full Prescribing Information, including Boxed Warning about suicidal ideation and behavior, and Medication Guide, or visit [SILIQ.com](https://www.siliq.com).

Getting started with SILIQ

It's normal to have questions when you're starting a new medicine—with SILIQ, you're not on your own. Your doctor will teach you how to give yourself a SILIQ injection.

Do not try to inject yourself until you have been shown the right way to do the injections by your healthcare provider.

How do I administer it?

- 1 SET UP:** Make sure you have what you need
- 2 SELECT** and clean the injection site
- 3 SQUEEZE** the site to create a firm surface
- 4 INJECT SILIQ:** Press the plunger until all the medicine has been injected

See the detailed "Instructions for Use" that come with your SILIQ for information on the right way to store, prepare, and give your SILIQ injections at home, and how to properly throw away (dispose of) used SILIQ prefilled syringes.

When do I administer it?

- Administer SILIQ **every week** for the first 3 doses
- SILIQ is administered once **every 2 weeks** after the first month of treatment
- The timeline below shows how often you administer SILIQ when you're starting treatment



Check out page 8 for additional safety information and treatment tips

Need help using SILIQ? Save our number in your phone:
1-888-777-5547

IMPORTANT SAFETY INFORMATION (cont'd)

Who should not use SILIQ?

Do not use SILIQ if you are allergic to brodalumab or any of the ingredients in SILIQ or if you have Crohn's disease. Tell your healthcare provider if you develop diarrhea, bloody stools, stomach pain or cramping, sudden or uncontrollable bowel movements, loss of appetite, constipation, weight loss, or fever or tiredness as these may be symptoms of Crohn's disease.

Please see additional Important Safety Information throughout and enclosed full Prescribing Information, including Boxed Warning about suicidal ideation and behavior, and Medication Guide, or visit [SILIQ.com](https://www.siliq.com).

SILIQ
(brodalumab) injection
210 mg/1.5 mL

Frequently asked questions

How long does it take for SILIQ to work?

Every patient is different, but in 1 study, almost half of those included were 100% clear at the 3-month mark when SILIQ was taken consistently. Some patients saw results in 2 weeks; however, this was not a key study endpoint. The results were considered observational only, which limits their applicability.

How long do SILIQ results last?

In a clinical study, more than 8 in 10 people who took SILIQ consistently achieved 75% clearance at 1 year. In a long-term phase 2 study, people experienced an average of 95% clearance at 3 months and remained at more than 90% through 4.5 years.

Does it matter if I've tried other biologics in the past?

People have found success with SILIQ even if they had previously tried up to 3 or more biologics that were unsuccessful.

Does SILIQ have any side effects?

Like most medicines, SILIQ can cause side effects. Talk with your doctor about the possibility before you start treatment, and let them know if you experience any during treatment.

The most common side effects include: joint pain, headache, tiredness, diarrhea, mouth or throat pain, nausea, muscle pain, injection site reactions, flu, low white blood cell count (neutropenia), and fungal infections of the skin.

You may report side effects to the FDA at 1-800-FDA-1088.

What should I do if I miss a dose?

Please contact your doctor if you miss a dose.

How do I store SILIQ?

SILIQ should be stored in the refrigerator. If you forget to put SILIQ in the refrigerator, it can stay at room temperature up to a maximum of 77 °F (25 °C) for up to 14 days before using it. However, once the prefilled syringe has reached room temperature, do not place it into the refrigerator. Store SILIQ in its original box to keep it protected from light or damage.

IMPORTANT SAFETY INFORMATION (cont'd)

Before starting SILIQ, tell your healthcare provider if you:

- have a history of mental health problems, including suicidal thoughts, depression, anxiety, or mood problems
- have an infection that does not go away or keeps coming back
- have TB or have been in close contact with someone with TB
- have recently received or are scheduled to receive an immunization (vaccine). You should avoid getting live vaccines while being treated with SILIQ

Please see additional Important Safety Information throughout and enclosed full Prescribing Information, including Boxed Warning about suicidal ideation and behavior, and Medication Guide, or visit SILIQ.com.

Frequently asked questions (cont'd)

How should I travel with SILIQ if I will need a dose while I am away?

You should keep SILIQ cold in a cooler bag with ice packs while you are traveling. Be sure to request a refrigerator for your hotel room.

How do I dispose of the used needles and syringes?

You should dispose of your injection materials in a container designed for needle disposal. Your pharmacy will provide instructions on how to return the filled container and how to get a new one.

What should I do if my syringe is damaged?

If you drop your syringe, it becomes frozen, or the needle cap is missing, do not use the syringe. Use a different syringe and call 1-800-321-4576 to ask about additional replacement doses.



Actual SILIQ patient who has failed on previous biologics.

IMPORTANT SAFETY INFORMATION (cont'd)

Before starting SILIQ, tell your healthcare provider if you (cont'd):

- are or plan to become pregnant or are breastfeeding or plan to do so. It is unknown if SILIQ can harm your unborn or newborn baby

Tell your healthcare provider about all the medicines you take, including prescription and over-the-counter medicines, vitamins, and herbal supplements.

Please see additional Important Safety Information throughout and enclosed full Prescribing Information, including Boxed Warning about suicidal ideation and behavior, and Medication Guide, or visit SILIQ.com.

SILIQ
(brodalumab) injection
210 mg/1.5 mL

LET ME BE CLEAR PSORIASIS WILL NOT STOP ME

Actual SILIQ patient who has failed on previous biologics.

SILIQ[®]
(brodalumab) injection
210 mg/1.5 mL

Want more support throughout your treatment? Call:

1-888-777-5547

Monday-Friday, 8 AM-5 PM ET

Plus, find more information and hear from people like you who found success with SILIQ at [SILIQ.com](https://siliq.com)



Next steps

Scan the QR code to access the SILIQ REMS Patient Enrollment form available at [SiliqREMS.com](https://siliqREMS.com). You'll need to complete this form before your doctor prescribes SILIQ.

links to: <https://siliqREMS.com/#Main>

IMPORTANT SAFETY INFORMATION (cont'd)

How should I use SILIQ?

See the detailed "Instructions for Use" that come with your SILIQ for information on the right way to store, prepare, and give your SILIQ injections at home, and how to properly throw away (dispose of) used SILIQ prefilled syringes. Use SILIQ exactly as your healthcare provider tells you to use it.

What are possible side effects of SILIQ?

SILIQ may cause serious side effects including severe skin reactions that look like eczema. These reactions can happen during treatment with SILIQ from days to months after your first dose and can sometimes lead to hospitalization. Your healthcare provider may temporarily stop treatment with SILIQ if you develop severe skin reactions. Tell your healthcare provider if you have any of the following signs or symptoms: redness or rash; itching; small bumps or patches; your skin is dry or feels like leather; blisters on the hands or feet that ooze or become crusty, or skin peeling.

See "What is the most important information I should know about SILIQ?" and "Who should not take SILIQ?"

Please see additional Important Safety Information throughout and enclosed full Prescribing Information, including Boxed Warning about suicidal ideation and behavior, and Medication Guide, or visit [SILIQ.com](https://siliq.com).

[SILIQ REMS WALLET CARD]

Please see Important Safety Information throughout and enclosed full Prescribing Information, including Boxed Warning about suicidal ideation and behavior, and Medication Guide, or visit [SILIQ.com](https://siliq.com).

SILIQ[®]
(brodalumab) injection
210 mg/1.5 mL

Save with SILIQ Solutions™

We're committed to helping you end your search for the right moderate to severe plaque psoriasis treatment—that's why we offer multiple ways to save on SILIQ. Which solution might work for you?

To learn more about any of our solutions, give us a call at **1-844-357-2013** (Monday-Friday, 9 am-5 pm ET).

If you have commercial insurance, you may qualify for the SILIQ Solutions Instant Savings Program. If eligible, **you may pay as little as \$0 per month** for your prescription.

Scan the code to enroll and view eligibility requirements.



links to: <https://www.siliqsavings.com/>

If you don't have commercial insurance or are underinsured, you may qualify for our Patient Assistance Program.

Scan the code to learn more and view eligibility requirements.



links to: <https://www.bauschhealthpap.com/>

Independent foundation support may also be available to those who have Medicare, Medicaid, TRICARE, or commercial insurance

Patient Advocate Foundation
www.copays.org
1-800-532-5274

Patient Access Network Foundation
www.panfoundation.org
1-866-316-7263

IMPORTANT SAFETY INFORMATION (cont'd)

The most common side effects of SILIQ include: joint pain, headache, tiredness, diarrhea, mouth or throat pain, nausea, muscle pain, injection site reactions, flu, low white blood count (neutropenia), and fungal infections of the skin. Call your doctor for medical advice on side effects. You are encouraged to report negative side effects of prescription drugs to Bausch Health at 1-800-321-4576 or FDA at 1-800-FDA-1088 or visit www.fda.gov/medwatch.

Please see additional Important Safety Information throughout and enclosed full Prescribing Information, including Boxed Warning about suicidal ideation and behavior, and Medication Guide, or visit SILIQ.com.

Ortho | Dermatology

SILIQ and Siliq Solutions are trademarks of Ortho Dermatologics' affiliated entities.
© 2025 Ortho Dermatologics' affiliated entities. SLQ.0131.USA.20V6.0

SILIQ.
(brodalumab) injection
210 mg/1.5 mL