

Extending legacy

WILLIAMS BURTON LEOPARDI



Longevity and soft luxury lead the design decisions of this home in Adelaide, once occupied by the owner's grandfather.

Words by Emma-Kate Wilson
Photography by Caroline Cameron

Millswood Residence is a family home that has been handed down through generations. In the latest reworking of this Adelaide residence, Williams Burton Leopardi pays homage to the heritage shed vernacular, honouring light and simplicity through a series of new pavilions.

The former kitchen was a dark, enclosed, museum-like space with an old wood-burning oven and an adjoining living area, a laundry and a toilet. Tasked with reinventing the space, the designers chose muted tones and textured materials to help enhance the building's scale.

The notion of "shed as muse" is evident in the addition's overhead pitched beams, while the skylights that punch through the lofted ceiling provide a sense of expansion. "When you're in the kitchen, you have the option to look up to the sky, out to the landscaping or to the creek that runs alongside the property – we wanted to frame views that captured that connection to place," says Williams Burton Leopardi director David Burton. "The exterior forms reflect a lot of light, especially in the morning, creating an interesting play of shadows throughout the day."

Bringing a legacy of the original into the new, the kitchen incorporates individual, furniture-like pieces, with functionality hidden away. "We wanted to combine fitted and unfitted forms within the kitchen. We used laminate to form the base joinery and fronts, with an integrated linear finger-pull detail in oak that accentuates the full-height storage wall," explains director Sophia Leopardi. "Concrete forms a custom benchtop, turning upward along the rear wall to create the splashback. As almost-separate modules, the overhead units sit as their own entities while the flanking full-height wall of joinery integrates key storage as an extension of the architecture."

A display shelf to one side of the range hood is made from a fine, perforated steel that echoes the home's external materiality. In a subtle touch, this element is repeated in the base of the island bench.

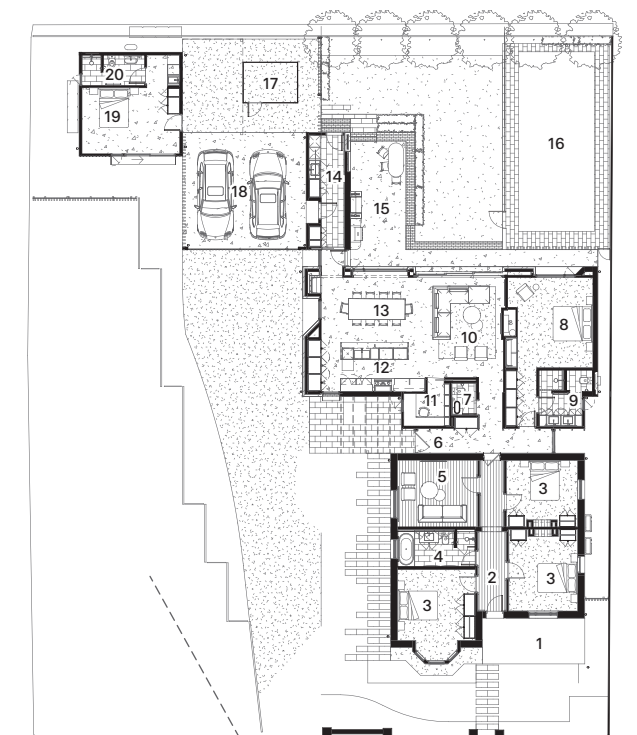
The concrete floor continues into the guest bathroom, a consistency that adds to the home's simplicity. Natural stone tiles line the rear wall to form the splashback, complementing a contemporary wall-hung basin and handmade wall lights. In the family bathroom, plantation shutters create dappled light, continuing the narrative of shadow play.

Millswood Residence is anchored by its crisp, clean colour palette, which carries from the exterior to the interior. Simplicity and repetition of form and material continue the rhythm of holistic design. Here, architecture and interiors enjoy a subtle interplay; the kitchen and bathrooms reveal the magic of a home filled with intimate details. ©

01 Exposed beams and a raked ceiling maximize light and volume while nodding to the internal space of a shed.

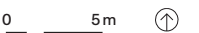
02 A functional layout and simple detailing create an efficient and elegant kitchen. Ceramics (L-R): Ebony Heidenreich, Ashlee Hopkins.

03 Connecting to the external entertaining area, the kitchen cleverly optimizes the northern aspect. Ceramic (middle): Connie Augoustinos.



- | | |
|----------------|-------------------------|
| 1 Porch | 12 Kitchen |
| 2 Hallway | 13 Dining |
| 3 Bedroom | 14 Laundry |
| 4 Bathroom | 15 Outdoor entertaining |
| 5 Sitting | 16 Pool |
| 6 Link | 17 Service yard |
| 7 Powder room | 18 Carport |
| 8 Main bedroom | 19 Guest bedroom |
| 9 Main ensuite | 20 Guest ensuite |
| 10 Living | |
| 11 Study | |

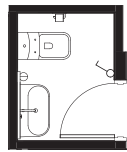
Floor plan 1:400



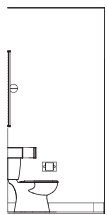


04

Bathroom and powder room products:
Internal walls: C13 and K69300 tiles from Eco Tile Factory in 'White Matt'; honed Carrara tile from International Ceramics; paint in Dulux 'White Duck Quarter'
Flooring: Honed Carrara tile from International Ceramics
Joinery: Caesarstone engineered stone in 'Fresh Concrete'; American white oak timber veneer
Lighting: Flos Mini Glo-Ball Wall Light from Transforma
Tapware and fittings: Bettelux bath, Soul 2 and Synthesis 70 wall basin by Studio Bagno in 'Gloss White' and Astra Walker Icon wall sets in 'Urban Brass' and 'Brushed Platinum' from The Source
Sanitaryware: Toilet from Caroma



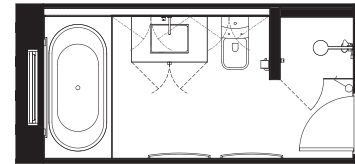
Powder room plan 1:100



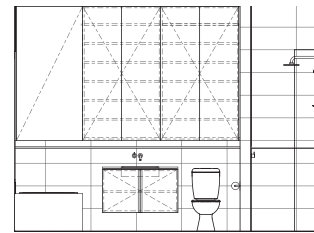
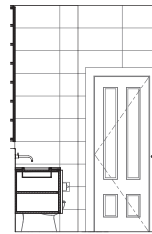
Powder room elevations 1:100

04 In the compact powder room, hand towels can hug the basin's curved rail. Ceramics (L-R): Minaal Lawn, Michelle Kelly.

05 Similar handle details are repeated in the bathroom joinery with a warm American white oak timber veneer.



Bathroom plan 1:100



Bathroom elevations 1:100



05

Kitchen products

Internal walls: Painted in Dulux 'White Duck Quarter'
Flooring: Polished concrete by Premix Concrete SA in platinum finish

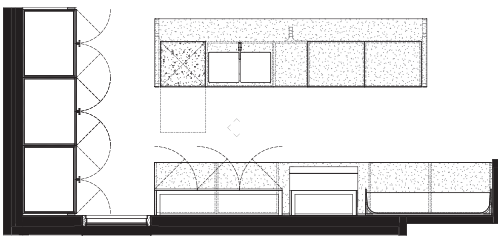
Joinery: Formed concrete benchtop with honed finish in 'White'; 2-pac joinery in Dulux 'Natural White'; American white oak timber veneer joinery leg, shelf and handles; perforated steel from Locker Group powder-coated in Duratec 'Eternity' and 'Eternity Linen Pearl'

Lighting: Unios Titanium surface-mounted light from Hi Lighting

Sinks and tapware: Oliveri Spectra double bowl in 'Gunmetal' and Zip Hydro tap in 'Brushed Gold' from The Source

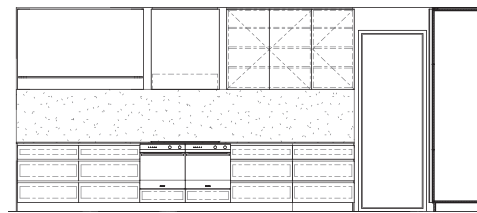
Appliances: Smeg oven and cooktop; Fisher and Paykel integrated French door fridge; Miele integrated dishwasher; Falmec rangehood

Other: Bok oak dining table by Ethnicraft from Terrace Flooring; Liz dining chair from Estilo Furniture in 'Toffee'; Snow stool from Agostino and Brown; Spiralled Vessel Square 1 by Connie Augoustinos; Sage large-footed platter from Jam Factory

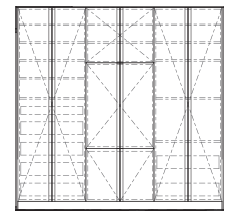


Kitchen plan 1:100

0 2m



Kitchen elevations 1:100



06 The overhead cupboards, shelf and island bench are designed to be seen as individual pieces rather than built-in elements.

Millswood Residence is built on the land of the Kaurna people.
Location Tarndanya/ Adelaide, SA

Architect
Williams Burton Leopardi
+61 8 8223 1177
wb@designbywbl.com.au
designbywbl.com.au

Project team David Burton, Sophia Leopardi, Erin Crowden, Emma Aronsten
Builder Cirocco Constructions
Engineer Gama Consulting
Joinery Gap Joinery
Metalwork Southern Stainless Fabrications
Landscape design Lee Gray Landscape Design
Styling Williams Burton Leopardi