

Elegant sufficiency

WOODWARD ARCHITECTS



An astute plan and a minimalist aesthetic reconfigure a compact Art Deco apartment into an ordered retreat that masters the art of small-scale living.

Words by Emma-Kate Wilson
Photography by Katherine Lu

How much space do we need to live well? This renovated apartment in a 1930s building in Sydney's Potts Point tests the possibilities of small-scale living, updating a 69-square-metre plan for a client who lives in Sydney but travels regularly. The brief was to create a multifunctional residence, maintaining heritage details while modernizing the kitchen and bathroom, and maximizing storage.

Set at the rear of an Art Deco block, Grantham Apartment has an idyllic treetop outlook that enables the northern light to filter through. The architect focused on increasing the natural light and sense of space while selecting finishes that respect the original architecture.

Woodward Architects made material and colour selections that would shift the occupant's perception of scale. Associate director Patrick Maitland explains: "The cooler wall colour enhances the feeling of space, and stainless-steel benchtops and fixtures give a contemporary feel. By combining these finishes with timber, we knew the apartment wouldn't feel cold."

A previous galley kitchen was opened to an L-shaped configuration to generate more floor space. Woodward Architects added a custom dining table with a concealed servingware drawer, spotted gum legs and a stainless steel top that echoes the surface

of the kitchen bench. A mass of overhead cupboards around the original sash window was removed, exposing the ceiling's height and flooding the kitchen with natural light.

With modern minimalism in mind, a continuous band of joinery is designed to recede into the background, concealing the dishwasher, oven, ample storage, entry to the adjoining bathroom, and the internal laundry. A floating linear pendant in the kitchen anchors the dining table and adds visual interest while providing indirect light and ambience for diners.

The bathroom is neatly tucked away within the centralized joinery. Inside, attention to detail has ensured a highly functional bathroom with a bath-and-shower combination, a handheld shower at a low level for pets, vertical heated towel racks, and overhead lighting as well as ambient wall light at the vanity. A fluted glass shower screen, slender tiles and terrazzo surfaces introduce subtle texture to the cool palette, which is offset by the warmth of spotted-gum joinery.

Patrick concludes: "Clean lines and reduced clutter, especially in smaller apartment settings, are important to ensure these spaces feel spacious and are easy to maintain." The result is a sanctuary of calm within the surrounding urban environment. ©



Floor plan 1:250 0 5m

- | | |
|--------------|----------------|
| 1 Entry hall | 6 Bathroom |
| 2 Study | 7 Kitchen |
| 3 Desk | 8 Main bedroom |
| 4 Laundry | 9 Living |
| 5 Pantry | 10 Balcony |

01 Reconfiguring the galley kitchen to an L-shape improved functionality as well as flow. Artwork: Hannah Nolan.

02 The bathroom door was integrated into kitchen joinery to avoid pokey thresholds.

03 Opening up previously enclosed spaces has refined circulation from the kitchen to the core of the apartment.





04



05



06

Kitchen products

Internal walls: Dulux paint in 'Lexicon Half'

Flooring: Australian Architectural Hardwoods spotted gum timber

Joinery: Poly 2-pac in Dulux 'Silver Tea Set'; stainless steel benchtop

Lighting: Linear stainless steel pendant by Flos from Euroluce

Sinks and tapware: Stainless steel Mythos 562 mm single sink by Franke and Culinary pullout mixer from Harvey Norman

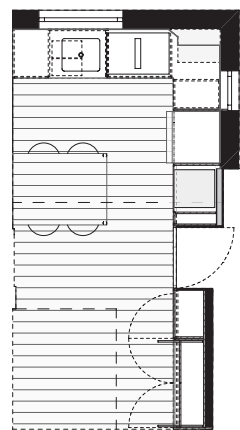
Appliances: Stainless steel N90 induction cooktop in 'Black' and built-in ovens (N90 and steam) by Neff; Miele integrated dishwasher from Winnings

Other: Custom stainless steel and spotted gum dining table with concealed servingware drawer by architect (design) and joiner (build)

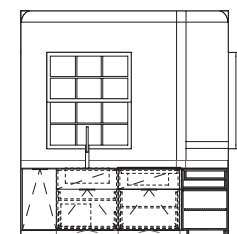
04 Overhead cupboards were removed to celebrate the volume of the space and allow light to fill the interiors.

05 A central dining table with a concealed drawer and stainless steel top is a place to dine and prep meals.

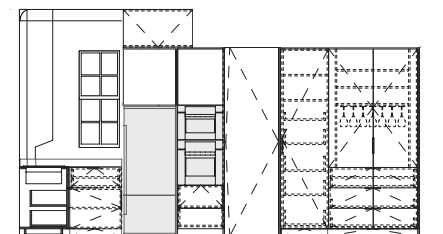
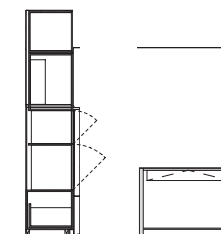
06 Crisp stainless steel benchtops add a minimalist, contemporary touch to heritage details.



Kitchen plan 1:100



Kitchen elevations 1:100





07

Bathroom products

Internal walls: Dulux paint in 'Lexicon Half'; Yuki YKR1 border tiles from Artedomus

Flooring: Honed Bedonia tiles from Artedomus

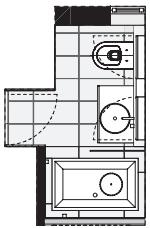
Joinery: Spotted gum veneers by Australian Architectural Hardwoods; honed terrazzo slab benchtop from Fibonacci Stone

Lighting: Mount St wall light by Dunlin in 'Chrome'

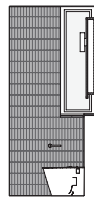
Tapware and fittings: Astra Walker wall-mounted tap and bath tap, ceiling-mount shower, and hand-held shower from Harvey Norman in 'Brushed Chrome'

Sanitaryware: Decina 1,200 mm bath from Smeaton Bathrooms in 'Gloss White'; Clay 400 ceramic basin by Robert Gordon; Reece toilet pan in 'Gloss White'

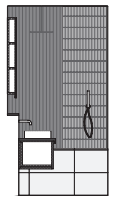
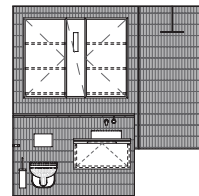
07 Textured glass and tiles are paired with spotted gum joinery to bring warmth to a subdued palette.



Bathroom plan 1:100



Bathroom elevations 1:100



Grantham Apartment is built on the land of the Gadigal people.
Location Warrane/
 Sydney, NSW

Architect
 Woodward Architects
 +61 2 8041 7802
 studio@woodwardarchitects.com.au
 woodwardarchitects.com.au

Project team Matthew Woodward, Patrick Maitland, Alex Harrington **Builder** Dande Built **Engineer** SDA Structures **Joinery** Superior Kitchens and Joinery **Stylist** Katie Love **Energy and design consultant** Ella Fairbairn **Certifier** BuildCert