

A different beat

MAYTREE STUDIOS



A challenging site called for unconventional thinking in this Brisbane home, which anchors living spaces around a decadent purple kitchen.

Words by Emma-Kate Wilson
Photography by Toby Scott

Colour and texture take centre stage for the perfect entertainer's abode at Same Same but Different House in suburban Brisbane. The clients approached Maytree Studios with a brief for a new home that could flex to accommodate lavish parties and provide a private retreat. The site's restrictions and council planning requirements meant the house had to be flipped from the more common north-facing orientation, resulting in a design that is "same same, but different."

Set down off the street, the house features a small courtyard that captures light through the entry, a pragmatic solution to the sloping site and south-facing orientation. Luckily, the balmy Queensland weather offers flexibility that the designers maximized with a second courtyard off the side of the kitchen – a quintessential element of indoor-outdoor living. Inviting French bistro vibes, these two courtyards are perfect for the many parties that spill out from kitchen, to living, to garden.

In the kitchen, a "working wall" is rendered in Laminex Kalamata, a moody and evocative purple hue picked out by the design-loving client. Maytree Studios has added touches of luxury in the decadent copper island bench and statement pendant light.

As a couple without children, the owners were able to compromise on elements to save space – such as a large laundry or separate living spaces. This means a monolithic working wall does all the heavy lifting, containing integrated appliances, a bar and coffee station, laundry and general household storage, plus entertaining joinery for the living room.

Beyond this, the guest bathroom peeps into sight and bookends the home, providing a visual and unexpected treat – plus an opportunity for filtered light to pour in through the louvre window. The eye-popping handmade azure tiles were chosen prior to the build and incorporated into the first design stage. Maytree Studios matched the deep hue with the paint on the walls and ceilings to create a memorable space for owners and guests alike.

Upstairs, an extravagant bath is integrated into the main bedroom, and instead of having traditional glass screens, the shower room is fully tiled, offering a sense of privacy and richness through strong colour. Though each bathroom holds its own personality, some memorable details are repeated, including vanities that read like a box suspended from the wall, moody lighting and high skirting to create presence.

Same Same but Different House embraces the clients' love of confident colour and a palette of raw yet luxurious materials to achieve a home that is at once familiar and unexpected. ©

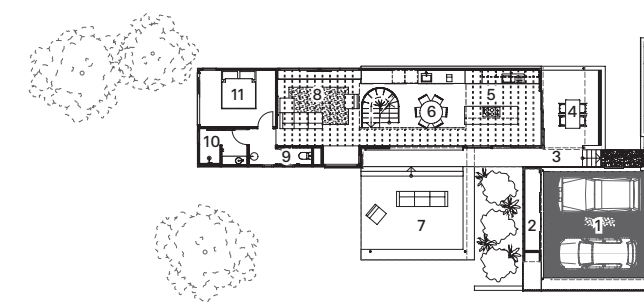


02

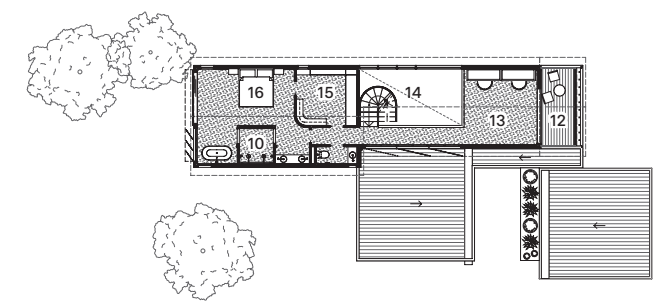
01 Deep purple joinery lines the northern wall from entry to living room, concealing fridge, pantry, bar and laundry.

02 The main bedroom and bathroom share space, maximizing access to northern light and views.

- | | |
|----------------|-----------------|
| 1 Carport | 9 Powder room |
| 2 Store | 10 Ensuite |
| 3 Entry | 11 Bedroom |
| 4 Patio | 12 Balcony |
| 5 Kitchen | 13 Office |
| 6 Dining | 14 Void |
| 7 Outdoor room | 15 Walk-in robe |
| 8 Living | 16 Main bedroom |

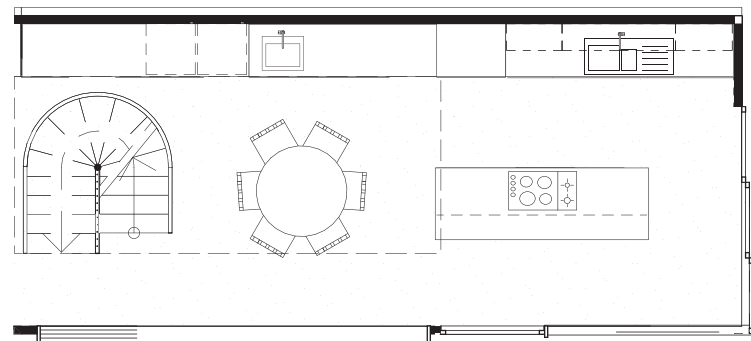


Ground floor 1:400

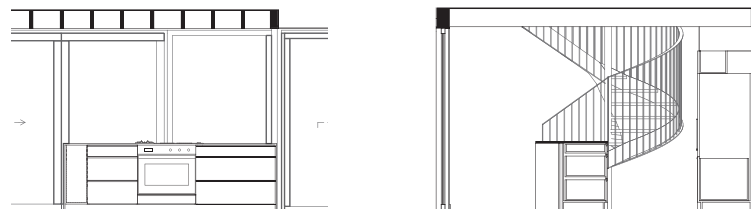
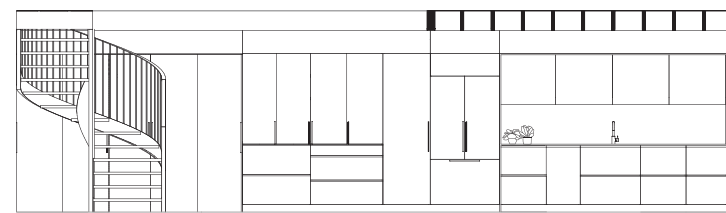


First floor 1:400

The clients' love of confident colour and a palette of raw yet luxurious materials achieves a home that is at once familiar and unexpected.



Kitchen plan 1:100



Kitchen elevations 1:100

Kitchen products

Internal walls: Dulux paint in 'White Duck Quarter'

Flooring: Concrete from Allen Brothers Constructions in 'Plain Grey' with matt topcoat honed by Grind and Seal

Joinery: Laminex splashback and drawers in 'Kalamata'; Dynamic Cabinetry joinery; aged copper sheet metal island benchtop; Sugie T5816 Hanten tile kickback from Artedomus in 'Black'; C137 finger-pull door handles from Handle House in 'Black'

Lighting: Ceiling-mounted MFL by Masson and Gypsum ribbed surface-mounted downlight from Beacon Lighting in 'White'; Lumen-8 globe lights

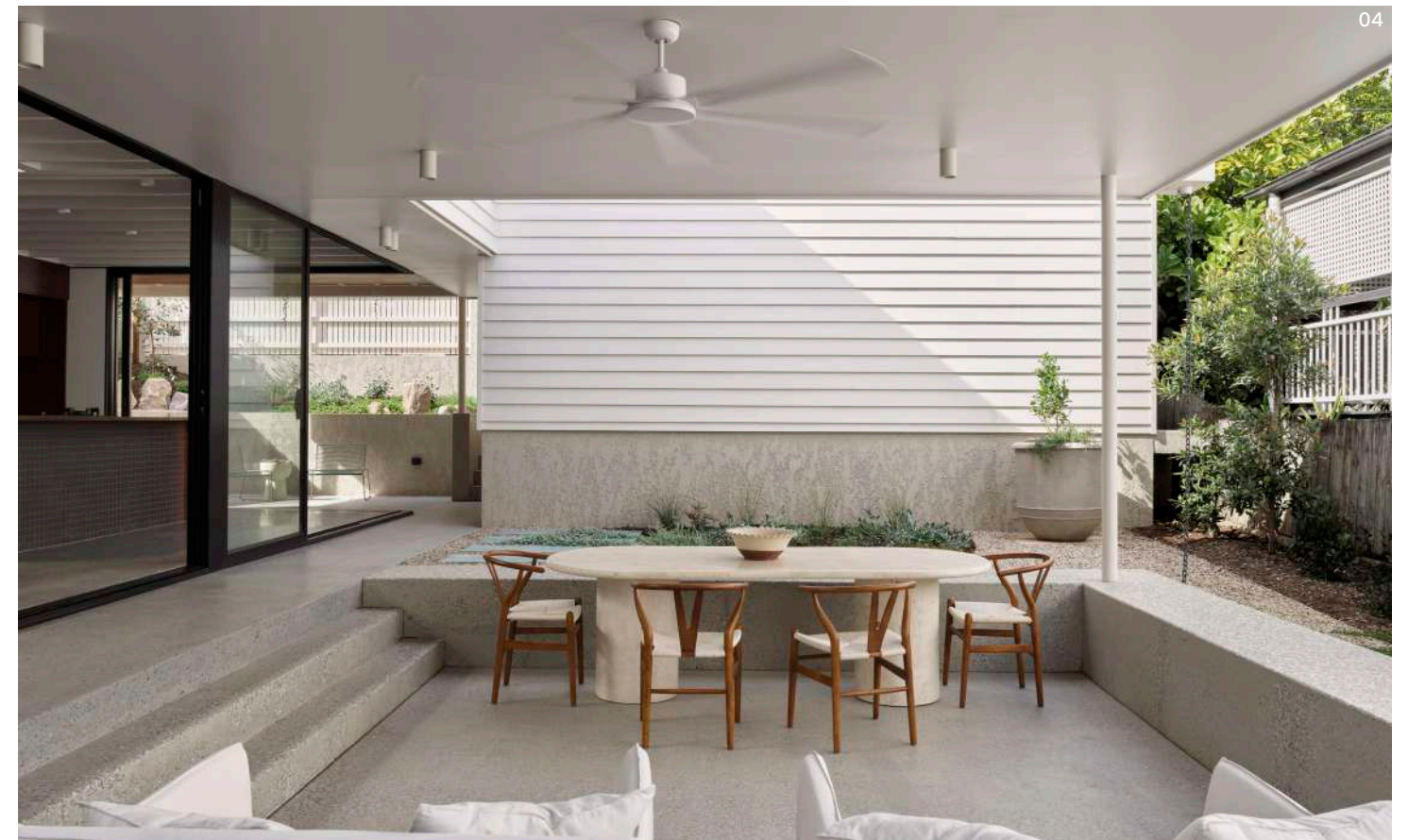
Sinks and tapware: Ontario double sink with strainer and Elysian mixer in 'Gunmetal' from ABI Interiors

Appliances: Fisher and Paykel integrated dishwasher, French door refrigerator and freezer, gas and induction cooktop, oven, washer and dryer

Other: Lamp shade by client; Jordan Homewares baskets



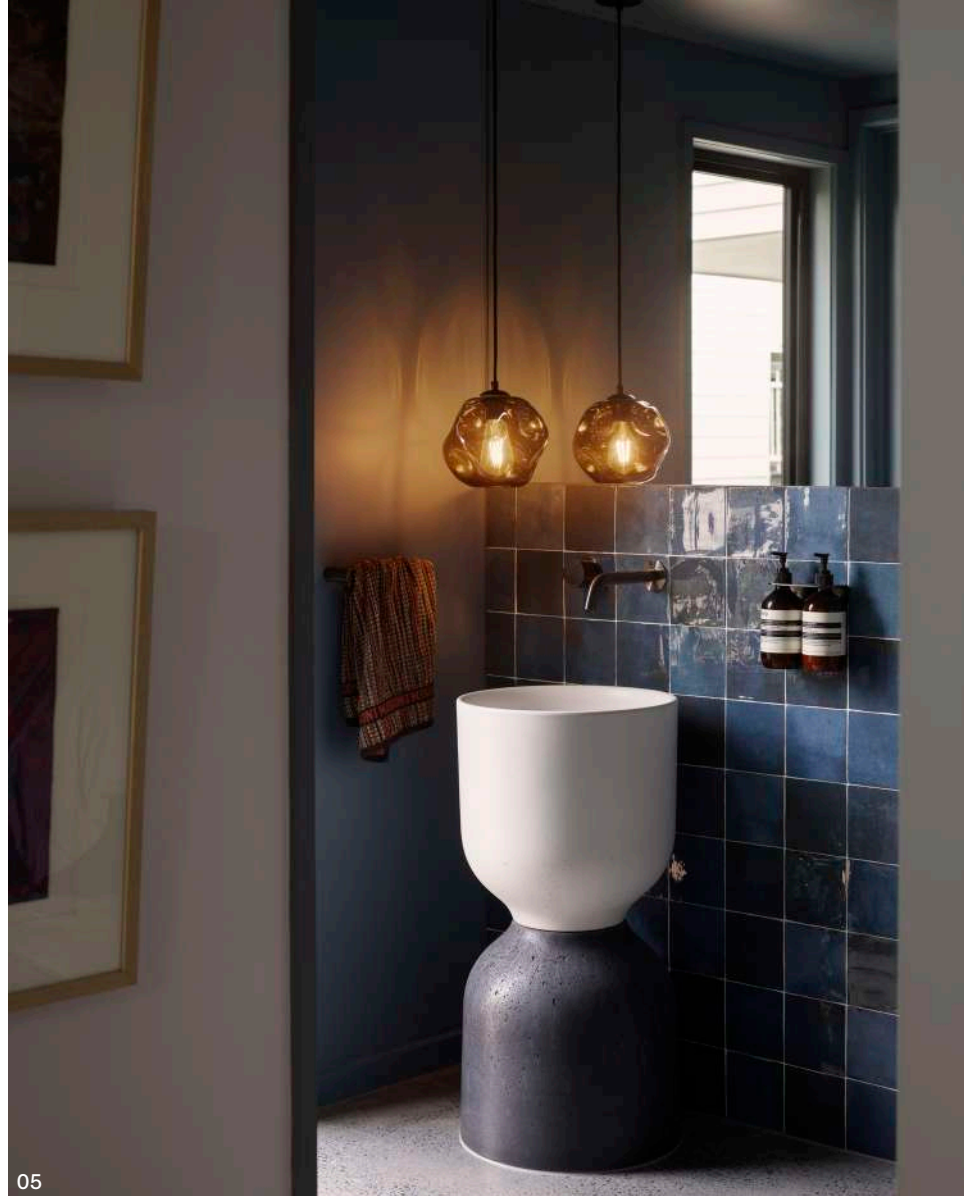
03



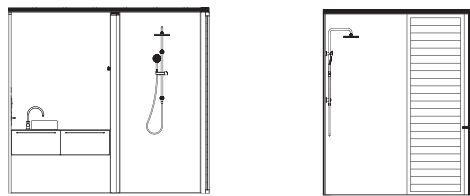
04

03 A copper island bench, which will patina with use, is a decadent touch. Ceramics: Henry Holland.

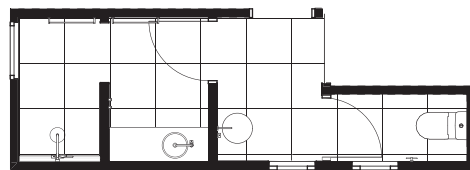
04 Large openings connect the kitchen to the outdoor room, expanding the floor area for entertaining.



05



Ensuite elevations 1:100



Ensuite and powder room plan 1:100



Bathroom products (main ensuite)

Internal walls: Dulux paint in 'White Duck Quarter'; Sugie mosaic tiles (50 mm x 50 mm) by Hansen from Artedomus; porcelain skirting tiles (600 mm x 600 mm) in 'Grey' from Amber Tiles

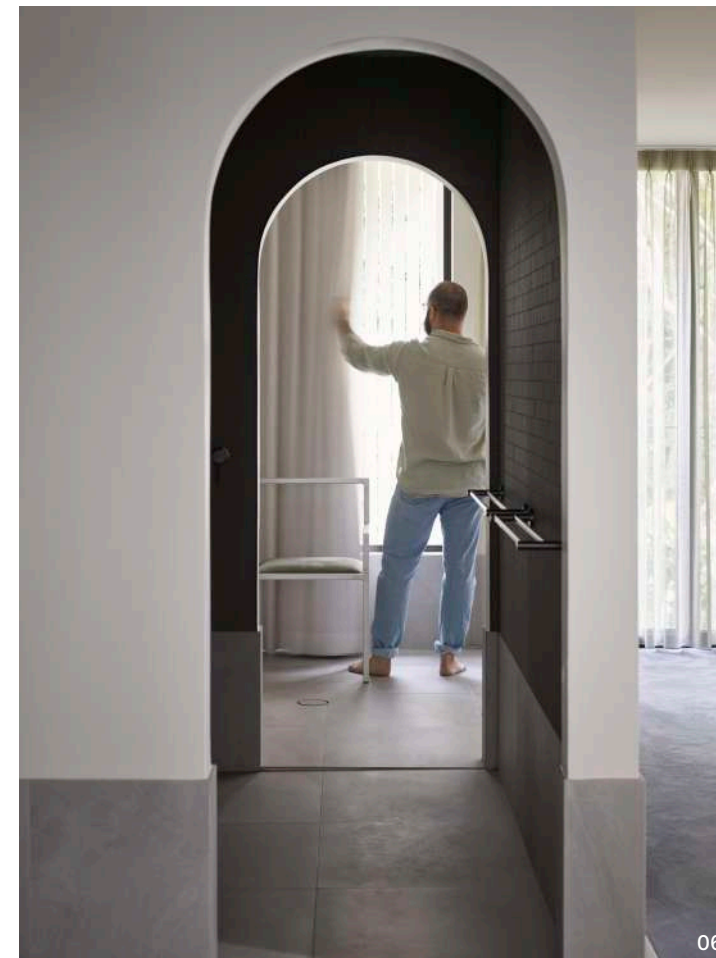
Flooring: Envy by Fyber Carpet from Carpets of Noosa in 'Denim'; porcelain tiles (600 mm x 600 mm) in 'Grey' from Amber Tiles

Joinery: Laminex HPL in 'Green Slate' with 'Natural' finish (wall-hung vanity with tight-form radius on 25 mm substrate, drawer front) and 16 mm double-sided decorative board from Dynamic Cabinetry; 600 Curve pull handle in 'Black' by Lo&Co Interiors

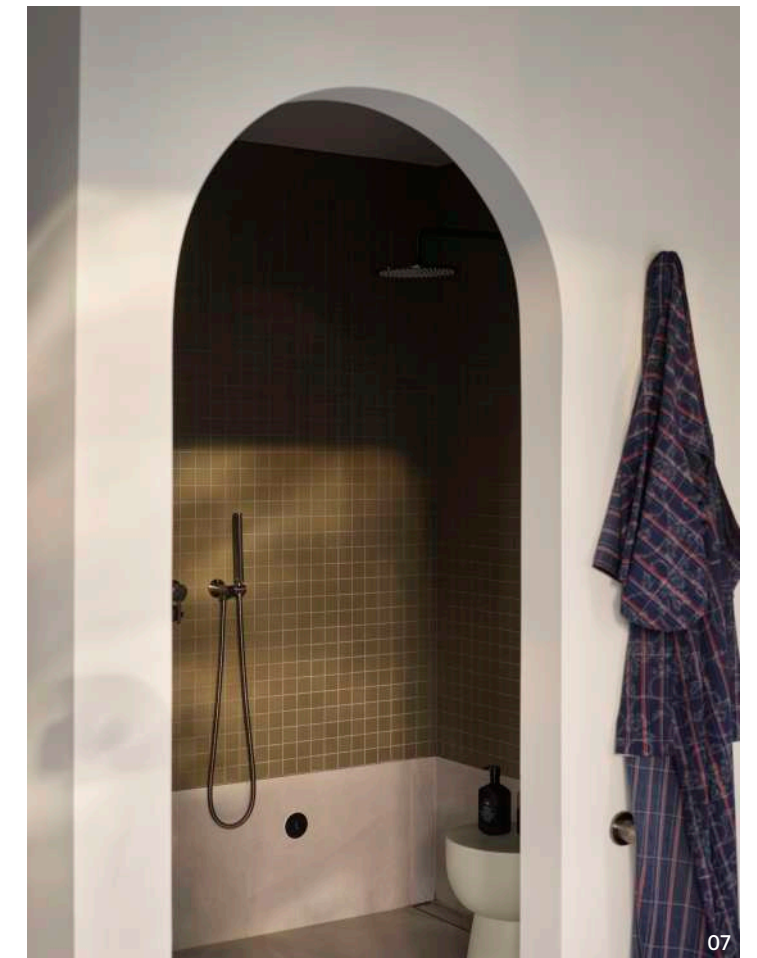
Lighting: Opal glass ball light from Fat Shack Vintage

Tapware and fittings: Milani basin hob mixer set, Dana round shower head (250 mm), Mila adjustable hand-shower holder and BP, Eden shower arm, Kobi curved hand shower, and Cali double towel rail (750 mm) from ABI Interiors in 'Gunmetal'; Brighton Groove freestanding bath tap from ATS Sydney in 'Gunmetal'

Sanitaryware: Eden bench-mount basin in 'White' from Highgrove Bathrooms; Brighton Groove 1,700 mm Fluted Oval freestanding bath from ATS Sydney in 'White'



06

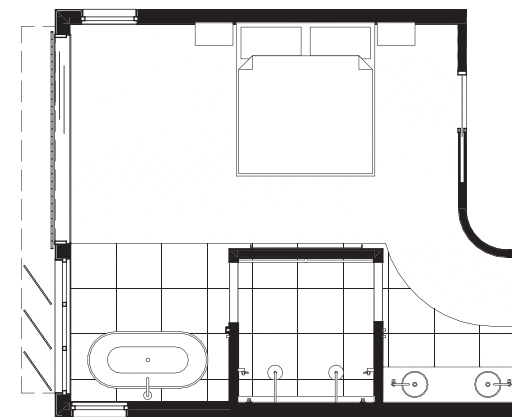


07

05 In the powder room, deep blue paint and tiles create a memorable and moody feel.

06 A change in floor material indicates the transition between the main bedroom and ensuite.

07 Green wall tiles surround the shower, contrasting the white walls of the bedroom and ensuite.



Main ensuite plan 1:100



Main ensuite elevations 1:100

Same Same But Different is built on the land of the Yuggera and Turrbal people.
Location
Meanjin/Brisbane, Qld

Architect
Maytree Studios
+61 7 3358 2605
hello@maytreestudios.com.au
maytreestudios.com.au

Project team Rebecca Caldwell, Kate Stafford, Alisha Bouris **Interiors and styling** Maytree Studios with Brady Sherwell **Builder** Allen Brothers Construction **Engineer** Lynskey Structural Consultants **Joinery** Dynamic Cabinetry **Landscape designer** Ecrú Studio **Building surveyor** KCV and ET Consultancy **Town planner** Jrey **Surveyor** Site Surveys