

CTC&G

Connecticut Cottages and Gardens

COTTAGESGARDENS.COM | OCTOBER 2022

LET'S
DECORATE!

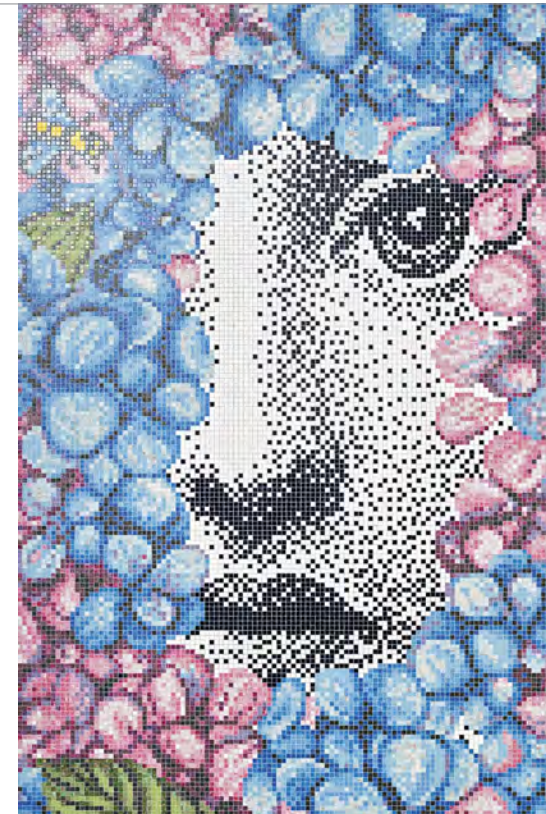
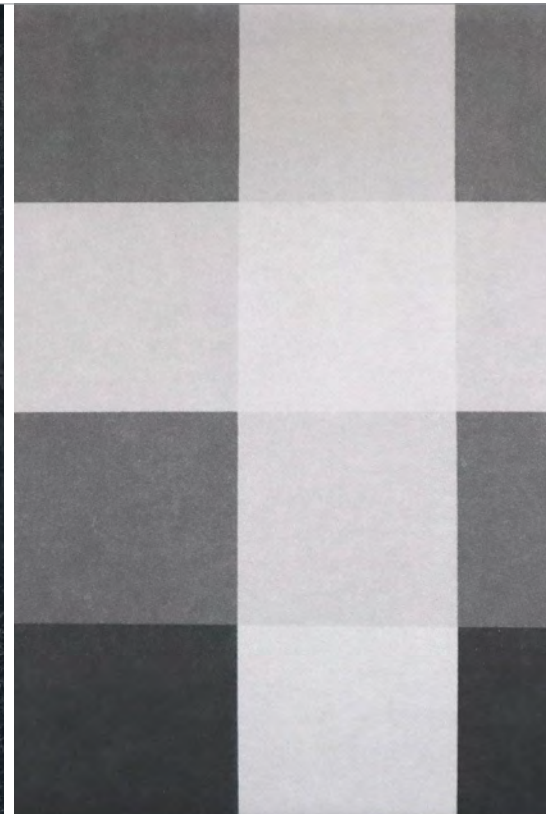


MARKETPLACE

SUBLIME SURFACES

UPDATE YOUR SPACE WITH THESE INSPIRED OPTIONS FOR WALLS, FLOORS AND MORE

PRODUCED BY CATRIONA BRANCA



AS SEEN IN
CTC&G
Connecticut Cottages and Gardens

CHIC CONTRASTS



(CLOCKWISE FROM TOP LEFT) Darcrest from **CAESARSTONE** has a dark, earthy base enriched by tiny spots and sediments with a veil of organic ochres and brownish greens; available in a honed finish. *Through Gault Stone & Landscape Supplies, Westport, gaultstone.com, caesarstoneus.com.* The Sio by Clodagh collection from **AKDO** includes Cubic Plaid Black, a multidimensional porcelain tile that goes from a simplistic plaid to unique patterns when rotated. *AKDO, Bridgeport, akdo.com.* PerfectSense, a new generation of cabinet and countertop surfaces from **HÄCKER KITCHENS**, has a velvety and smooth feel. Available in 12 colors (shown in dark marble) and two finishes. *Greenwich, hackerkitchens.us.* **CROSSVILLE**'s Ardesia a Spacco collection is offered in two through-body colors, Bianco (shown) and Nero. Inspired by Pietra di Lavagna slate, the porcelain tile panels replicate the appearance of split-gauged stone. *Through Connecticut Stone, Milford, connecticutstone.com, crossvilleinc.com.* **ANN SACKS'** Terrazzo Renata Fluted Collection is now available in black (shown)—ebony marble inlaid with pure white, varying sized stones—and grigio carnico (a deep gray). *Through Kohler Signature Store, Westport, kohlersignaturestorewestport.com, annsacks.com.*

NATURAL BEAUTIES



(CLOCKWISE FROM TOP LEFT) **BISAZZA**'s Collezione Fornasetti large-format mosaics reproduce some iconic Fornasetti images including the enigmatic face of Fornasetti's muse, opera singer Lina Cavalieri who, in the Ortensia pattern, peeks out from behind hydrangea petals. *bisazza.com.* A new quartz from **CAMBRIA**, Clifton has cool whites and soft, sage greens enhanced by silver flecks, evocative of the beauty of a seaside escape; available in matte and high gloss. *Through Ring's End, ringsend.com, cambriausa.com.* The Flourish mosaic tile collection from **ARTAIC** explores the abstract beauty of botanical shapes in calming watercolor pastels; perfect for walls and floors—even as a pool lining. Oasis pattern in Wisteria shown. *artaic.com.* New to the **TILE SHOP** and designed with Laura Ashley's signature English country style, Sunflower porcelain floor and wall tiles are available in Pale Slate/White, Charcoal/White, Charcoal/Cloud Blue Slate and White/Charcoal. *Norwalk, tileshop.com.* Available at **TILEBAR**, the Angela Harris Wilder Protea Leaves mural matte porcelain tiles feature exotic flowers and leaves in shades of green, blue and purple. Each box contains 36 pieces to form a four-foot-square mural. *Manufactured by Mainzu, mainzu.com, tilebar.com.*



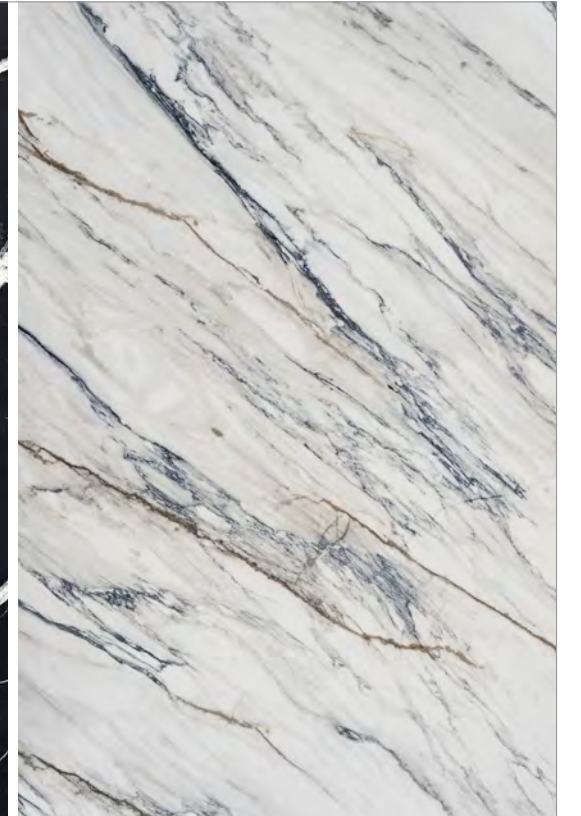
FINE LINES



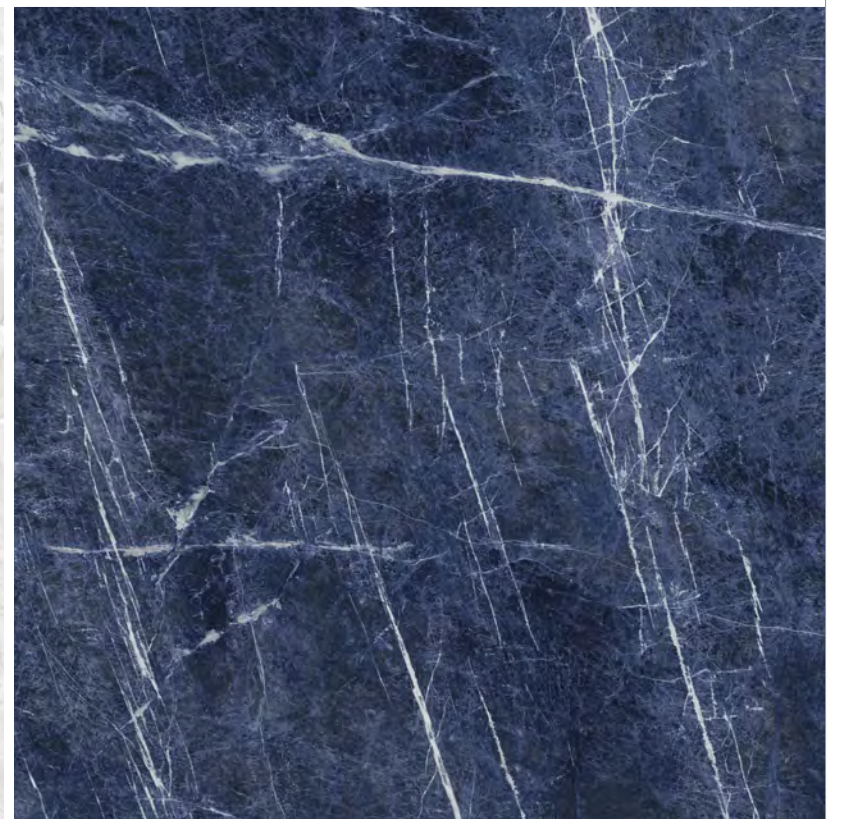
(CLOCKWISE FROM TOP LEFT) Linaire is a new addition to **DUCHATEAU**'s handcrafted wallcovering collection. The Shadow style (shown in walnut, also available in oak) is backed by a felt layer of acoustic insulation, emphasizing the light and shadow between the wood pieces. [duchateau.com](#). Jute, in tumbled Lagos Gold limestone, is a hand-cut mosaic from the Studio Line by **NEW RAVENNA**. *Through Bender, Norwalk, [benderplumbing.com](#), [newravenna.com](#)*. The Havana-inspired pattern of **AKDO**'s Plaza Nueva (designed in collaboration with Gensler) Rampa Navy hexagon-shaped porcelain tile creates an energetic focal point in any room. *AKDO, Bridgeport, [akdo.com](#)*. The Deco Field Tile Peak is part of the Gubi Collection from **WALKER ZANGER**, featuring five contemporary textured patterns in four neutral shades (shown in sand). [walkerzanger.com](#). **ANN SACKS**' iconic Selvaggio collection has two new colors, Lilac (shown) and Rosa. The engaging combination of marbles creates a mesmerizing surface effect. *Through Kohler Signature Store, Westport, [kohlersignaturestorewestport.com](#), [annsacks.com](#)*.



MARKETPLACE



QUARRIED LOOKS



(CLOCKWISE FROM TOP LEFT) A natural quartz from **ANTOLINI**'s Exclusive Collection, Cristallo Roots has a background in shades of gray and beige, furrowed with veins similar to deep roots that exist below the earth's surface. [antolini.com](#). Veins of crystalline white and silver streak across the surface of **ARTISTIC TILE**'s Noir Moon marble in polished or honed tile, or as slabs enhanced with a smoothly textural leather finish. *Through Nukitchens, Norwalk, [nukitchens.com](#), [artistic tile.com](#)*. **COSENTINO**'s carbon-neutral Dekton Onirika collection, designed by interior designer Nina Magon, brings unique, marble-inspired patterns to life through daring new colors (Trance shown). *Through Ring's End, Darien, [ringsend.com](#), [cosentino.com](#)*. Divine Blue is one of the polished Italian marble looks in **IRIS CERAMICA**'s Maximum Marmi range of premium large-format porcelain panels produced in Italy. *Through Genrose Tile & Stone, Middletown, [genrose.com](#), [irisceramicagroup.com](#)*. Winston, a new collection of porcelain marbles from **NEMO TILE & STONE**, features vein patterns created with translucent glazes. It is offered in six sizes, two finishes and eight patterns (Pulpis Grey shown). [nemotile.com](#).