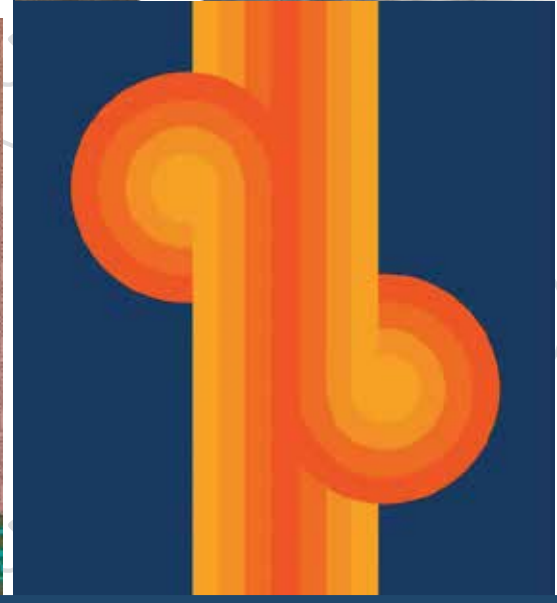
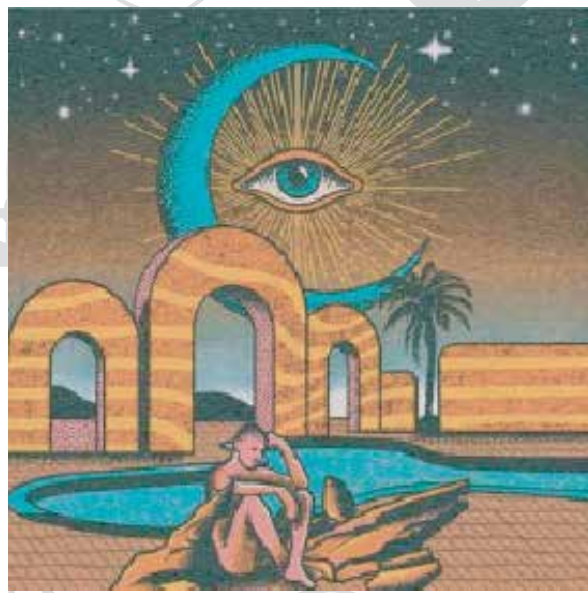
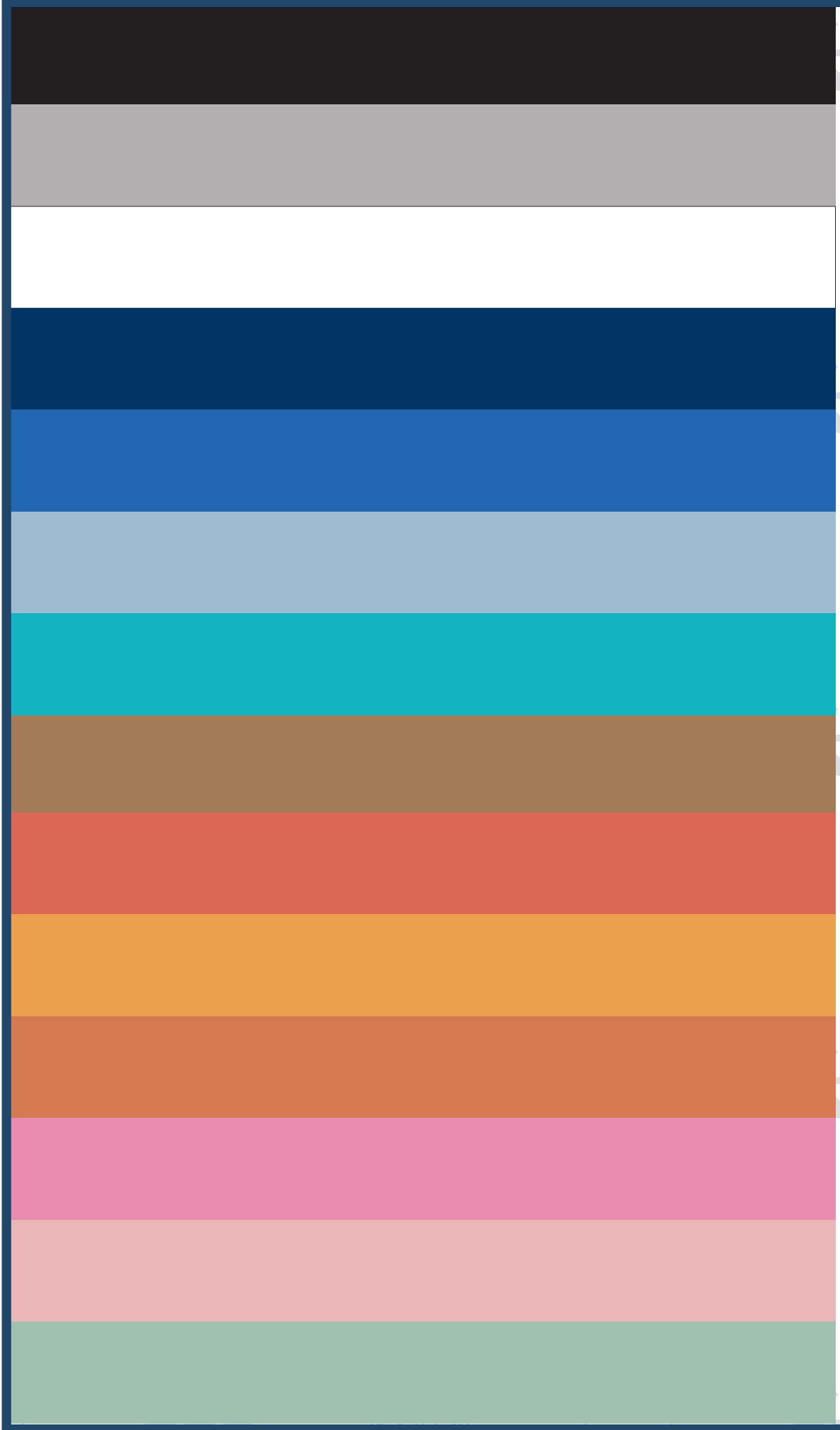




STAR WARS

BY: JESSICA CASTANEDA



Bright Accents
& Groovy Patterns
**Retro
Eclectic**

MENS STYLING DETAILS



LOGO RINGER



CONTRAST TOP STITCH



BRANDED NECK TAPE



REFLECTIVE SCREENPRINT INK



SOLID SLUB JERSEY



PATTERN NECK TAPE



PRINTED INSIDE BACK YOKE



3-D EMBROIDERY



STRIPED RINGER



OVERSIZED FIT
CONTRAST TOPSTITCH



EMBOSSSED ELEMENTS/
HALFTONE GRADIENTS



TONAL PATTERNS
INSIDE ELEMENTS

**STAR
WARS**
BY: JESSICA
CASTANEDA

MEN'S TEE



BLACK HEATHER
60% COTTON/40% POLY
32 SINGLES

NAVY SPECKLE SNOW
60% COTTON/40% POLY
32 SINGLES

RED SPECKLE SNOW
60% COTTON/40% POLY
32 SINGLES

LIGHT GREY HEATHER
60% COTTON/40% POLY
32 SINGLES

**STAR
WARS**
BY: JESSICA
CASTANEDA

WOMENS TOPS: DETAILS & SILHOUETTES



MOISTURE WICKING
CROPPED TANK



RELAXED LS TEE W/CURVED HEM
& THUMB HOLE CUFFS



BOXY CROP TEE



SLOUCHY SCOOP NECK
W/EXPOSED SEAMS



SIDE SLIT



SPLIT NECKS



EXPOSED SEAMS
& CURVED HEM



LETTUCE TRIM
HEM



HEATHER CONTRAST
NECK & CUFF



SPORTY STRIPES

WOMEN'S TEE



WHITE JERSEY
60% COTTON/40% POLY
32 SINGLES



**VINTAGE BLACK BODY/
LIGHT GREY HEATHER SLEEVES**
60% COTTON/40% POLY
32 SINGLES



**LIGHT GREY HEATHER BODY/
VINTAGE BLACK SLEEVES**
60% COTTON/40% POLY
32 SINGLES

**STAR
WARS**
**BY: JESSICA
CASTANEDA**

ADULT HOODIE



NAVY FLEECE
60% COTTON/40% POLY
280 GSM



BLACK HEATHER FLEECE
60% COTTON/40% POLY
280 GSM



CADET BLUE FLEECE
60% COTTON/40% POLY
280 GSM

**STAR
WARS**
BY: JESSICA
CASTANEDA

BOYS



SOLID WHITE JERSEY
100% COTTON
32 SINGLES

GREY JERSEY SLUB
100% COTTON
165 GSM

ROYAL BLUE HEATHER
60% COTTON/40% POLY
32 SINGLES

**LIGHT HEATHER GREY JERSEY BODY/
NAVY SPECKLE SNOW SLEEVES & RINGER**
60% COTTON/40% POLY
32 SINGLES

**STAR
WARS**
BY: JESSICA
CASTANEDA

GIRLS TEE



PINK JERSEY
60% COTTON/40% POLY
32 SINGLES



SAND JERSEY
60% COTTON/40% POLY
32 SINGLES



LIGHT GREY HEATHER JERSEY
60% COTTON/40% POLY
32 SINGLES

**STAR
WARS**
BY: JESSICA
CASTANEDA

KIDS HOODIE



CHARCOAL HEATHER FLEECE
60% COTTON/40% POLY
220 GSM



LIGHT GREY HEATHER FLEECE
60% COTTON/40% POLY
220 GSM



CADET BLUE HEATHER FLEECE
60% COTTON/40% POLY
220 GSM



BLACK FLEECE
60% COTTON/40% POLY
220 GSM

**STAR
WARS**
BY: JESSICA
CASTANEDA