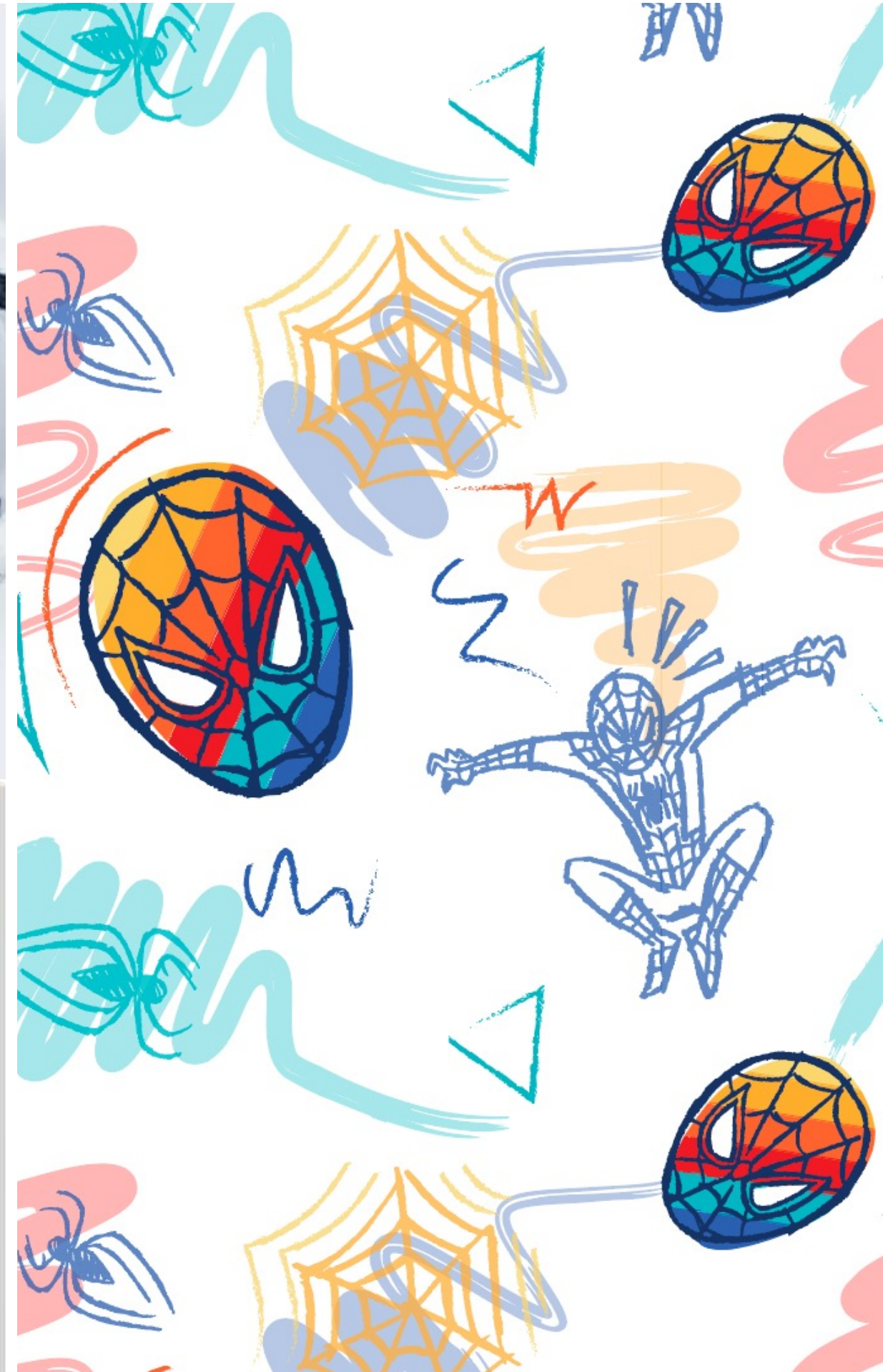




MARVEL FAMILY SWIM
Q2 FY24

My Contributions to this project:

I owned product development for the Marvel Family Swim assortment, leading all swimwear and footwear from design refinement through final approvals. I enhanced core graphic elements, including stripe pattern updates, and ensured color accuracy through Pantone matched strike-offs. By overseeing trim, material, and embellishment approvals, I delivered a cohesive, high quality assortment aligned with Marvel's brand standards and commercial goals.

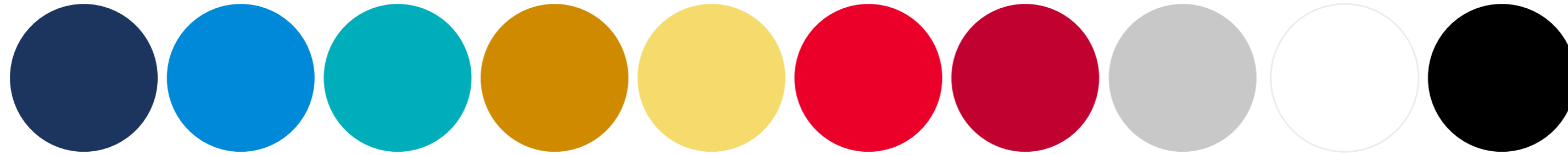


Q2 FY24
MARVEL FAMILY SWIM
ASSORTMENT OVERVIEW



COLOR PALETTE

PMS-ART COLORS



PANTONE
PMS 534 C

PANTONE
PMS 2382 C

PANTONE
PMS 7466 C

PANTONE
PMS 131 C

PANTONE
PMS 127 C

PANTONE
PMS 185 C

PANTONE
PMS 200 C

PANTONE
PMS 420 C

PANTONE
PMS WHITE

PANTONE
PMS BLACK

TPG-GROUND YARN COLORS



PANTONE
MIEVEAL BLUE
19-3933 TPG

PANTONE
CAMPANULA
18-4141 TPG

PANTONE
CERAMIC
16-5127 TPG

PANTONE
SUNFLOWER
16-1054 TPG

PANTONE
LEMON ZEST
13-0756 TPG

PANTONE
FLAME SCARLET
18-1662 TPG

PANTONE
CHINESE RED
18-1663 TPG

PANTONE
WIND CHIME
14-4002 TPG

