

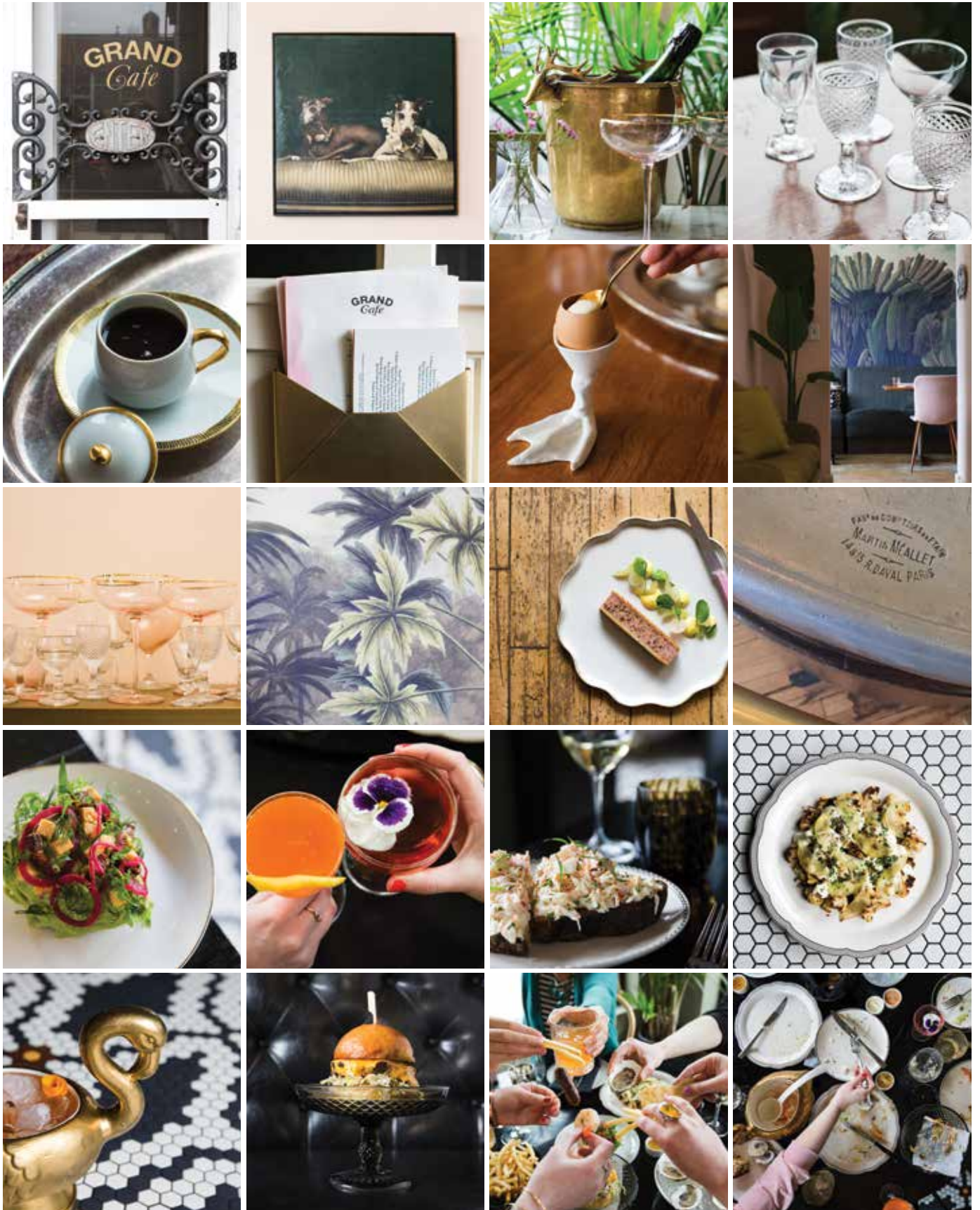
#eastsidempls

@MeganGosch &
@MorganHalaska



Instagrammable

Minnesota has a bounty of venues that are made for sharing on social media.



Grand Café (rows 1-3) and Eastside (rows 4-5) boast stunning food, drinks, glassware, décor and backdrops.

PHOTOS: RACHEL NADEAU; (COMPOSITE) D'AMICO CATERING

GRAND CAFÉ

🌐 grandcafemn.com
✉ events@grandcafemn.com
📷 @grandcafe_mpls
📍 South Minneapolis

Photo-Worthy Features:

In 2017, this beloved 70-year-old eatery in the Kingfield neighborhood underwent a complete transformation and emerged as the bright and charming jewel box French bistro Instagram influencers dream of.

From the pink-hued walls, hand-painted wallpaper, lush greenery and tropical mural to the 1920s Parisian zinc top bar, art deco-shaped booths and brass accents, every detail was designed to delight.

Vintage champagne buckets, elegant rolling marble carts and a sweet collection of mismatched tableware join bird-footed egg cups and cheeseburgers served on decadent scalloped silver trays in a playful mix of classic and modern flair. Whimsical dog portraits pay homage to the owner's Italian greyhounds while touches like the showpiece bakery window incorporate nods to the restaurant's past (the space was once home to a bakery).

The masterful kitchen, helmed by James Beard finalist chef and owner Jamie Malone, also serves up a mix of new and old French classics, including dry-aged Côte de Boeuf with potato salad and onion rings and milk chocolate Pot de Crème, that are as delightful to capture as they are to eat.

The Details:

Grand Café's private dining room can accommodate up to 25 guests seated, with full restaurant buyouts available for up to 80 guests. Event menus can be customized, and while the eatery is most popular with special events and personal parties, the space is also an ideal fit for receptions, rehearsal dinners, corporate dinners and holiday parties.

EASTSIDE

🌐 eastsidempls.com
✉ events@eastsidempls.com
📷 @eastsidempls
📍 Downtown Minneapolis

Photo-Worthy Features:

Bringing fresh buzz to Minneapolis' Downtown East district, Eastside is sleek, fun and full of energy.

Floor-to-ceiling windows and an abundance of natural light strike the perfect balance with Eastside's luxe dark seating and stunning black and white tile work. Lush greenery, eclectic artwork, and details like the brass winged lions adorning the bar all add a touch of opulence, while the breezy streetside patio strung with café lights creates a relaxed yet upscale ambience.

Many of the expertly crafted dishes, like the whole wood roasted duck or the grilled bass with pork cheek and brown butter vinaigrette, are served family-style and—paired with black marble Lazy Susans—make for fun and relaxed group dining. But no trip to Eastside is complete without an order of the Bonal Spritz. Made to share, the cocktail served in a golden swan is the perfect complement to the eatery's tongue-in-cheek meets glam aesthetic and a reason in and of itself to get a group together.

The Details:

Eastside's private dining space can accommodate up to 28 guests for a seated dinner and up to 35 guests for cocktail receptions. Full buyouts are available to accommodate up to 160 guests. Already a popular spot for corporate dinners, the space is also well-suited for special occasions and social gatherings.

← ASHERY LANE FARM ...

📍 15 minutes west of Minnetonka



Photo-Worthy Features:

Natural beauty is found year-round at Ashery Lane Farm, with apple blossoms blooming in spring, lush vineyards in summer, apple harvesting in fall and snow-covered rolling hills in winter. As such, beautiful photos come naturally here. Verdant greenery, wreaths, lush florals and rich tablescapes with mixed metallics tend to complement and enhance the rustic luxe aesthetic best. And, being a barn, llamas have been known to join the party.

Ashery Lane's hallmark feature are the 13-foot tall, cathedral-style, cardinal red doors on the Grand Barn.

D'Amico chefs and event planners create photographable culinary experiences, too. S'mores stations around the large fire pits and opulent farm tables filled with local cheeses, cured meats and hyper-local ingredients like apples from the orchard all make for Insta-worthy moments.

The Details:

Ashery Lane Farm is ideal for a wide variety of events, including corporate retreats and celebrations, company picnics, family reunions, makers markets and holiday parties. There are two buildings on the property: Harvest Hall can accommodate 120 for a seated meal or 200 for a reception, and The Grand Barn can accommodate 300 for a seated meal or 350 reception-style. Both spaces can also be set in theater-style, accommodating up to 350 guests.



🌐 damicocatering.com/venues/ashery-lane-farms
☎ 612.238.4444 📷 @ashery_lane



PENNY'S



📍 Downtown Minneapolis & Linden Hills



Photo-Worthy Features:

Built around the concept of coffee, conversation and community, Penny's serves artisanal roasted coffees and teas alongside an all-day menu of house-made sweet and savory crepes, fresh baked goods, salads and sandwiches.

The downtown café, located on the first floor of the Minoru Yamasaki-designed 100 Washington Square, features a roomy walnut bar, polished green marble and drop lights hanging from 40-foot ceilings.

The Linden Hills location on West 44th boasts an airy, stylish space accented with exposed brick, lush greenery, a communal table and large glass garage doors that are open during the summer months.

The Details:

Penny's Downtown can accommodate 50 guests, and the Linden Hills location can hold up to 100. Each room has a two-hour minimum rental and includes complimentary bottled water, drip coffee and tea. Any specialty coffee or food items ordered from the café come with a 15 percent discount. The conference rooms come equipped with large televisions and Apple TV for screen mirroring purposes.



🌐 pennyscoffee.com
✉ people@pennyscoffee.com
📷 @pennyscoffee_



#findlora

LORA

🌐 lorahotel.com ✉ 651.571.3500 📷 @lora_hotel
📍 Stillwater, on the banks of the St. Croix River

Photo-Worthy Features:

Lora is a combination of several buildings from different time periods; rather than demolish everything and start from scratch, the hotel was built using the existing elements. The result is a mix of materials and juxtaposition of the old and new.

Many of Lora's 40 guest rooms feature the original limestone wall. A jagged wall acts as the focal point in The Long Goodbye; the wall wasn't part of the original plan, but the designers, who recognized its unique beauty during demolition, decided to keep it.

The adjacent limestone caves housed a brewery 150 years ago. The Cave Room, Feller's private dining room, features "fairy tale doors" that mark the entrance to the caves.

Feller has many photogenic dishes including chef Sam's pot pie, the Feller burger, the Belgian waffle, the Smoked Trout BLT and the Harvest Salad.

The Details:

The Cave Room accommodates 40 people seated or 60 cocktail-style, and the Moon Room, a private space in The Long Goodbye, holds 16; the space was once used for horse and carriage deliveries. The outdoor patio can be used for a yoga session or an outdoor cocktail gathering in the summer. In the winter, there's a fire pit for people to gather around and drink hot toddies. The Empire Suite, which has an outdoor space, is ideal for intimate gatherings.



PAIKKA

- 🌐 paikkamn.com
- ✉ hello@paikkamn.com
- 📍 @paikkamn | #paikkamn
- 📍 Vandalia Tower, St. Paul

Photo-Worthy Features:

Nestled within St. Paul's turn-of-the-century Vandalia Tower complex (formerly the King Koil mattress factory), PAIKKA's fresh, modern event space is surrounded by creative entrepreneurs, local makers and plenty of installation eye candy.

Original brick walls, 1940s steel-vaulted ceilings and an abundance of natural light set the stage for creativity to flow inside

while paned garage doors, café lights and a clean, minimalistic landscape of the adjacent courtyard space create a charming backdrop for outdoor celebrations.

Unexpected touches like the rolling vertical garden walls (designed and created by the PAIKKA team), a selection of custom art and the inclusion of an original hand painted "wall paper" motif by local duo She She bring a thoughtfully curated atmosphere to the industrial space. But the venue's most photogenic hallmark may be the eye-catching custom hummingbird mural painted on the 9-foot antique hanging doors that separate the space's Gold and Pink Rooms.

The Details:

Combined, PAIKKA's Gold and Pink rooms can accommodate up to 200 seated guests and up to 275 for a cocktail reception. Amenities like the custom-built mobile bar, staging kitchen and a lounge area outfitted with modern and vintage furniture are major perks, but the women-owned venue's small, dedicated staff with a strong value for customization is also an incredible asset. Flexibility in selecting elements from catering and bar service to event type or floor plan layout ensures each event in the space will feel truly unique. 🍷