



Instagrammable

The Northeast has a bounty of venues that are made for sharing on social media.

#loganinpa
#landmarkhospitality

@MorganHalaska,
@MeganGosch &
@KassidyTarala



LOGAN INN

 @loganinnpa
 loganinn.com
 New Hope, Pennsylvania

Photo-Worthy Features:

With new renovations coming soon, Logan Inn is an Instagrammable venue with even more photo ops to come. Located in New Hope, Pennsylvania, Logan Inn is known for its bar, restaurant, cozy breakfasts in bed and photo-worthy lobby. "It's warm, inviting and intimate. Logan Inn is where locals and travelers linger together," says Maddy Cretella, director of marketing for Landmark Hospitality. The quaint, small-town vibe of Logan Inn is perfect for an intimate event, team-building retreat or an overnight getaway.

The Details:

Currently, the Logan Inn can host private dining events and small parties, but once its expansion is complete, it will have a multitude of private spaces and larger event space in a similar modern and colonial design. Part of the Landmark Hospitality portfolio, Logan Inn has two sister properties in town, Hotel du Village and The Mansion Inn. Between these three properties, they can host events for anywhere from 10 to 300 guests.



EASTWIND HOTEL & BAR

 @eastwindny  eastwindny.com  Windham, New York

Photo-Worthy Features:

Eastwind's beauty begins with sweeping views of Windham Mountain in the Catskills and extends into the creature comforts of the Scandinavian-designed interior spaces. Once a former bunkhouse for hunters and fly fisherman, Eastwind was renovated by a group of friends who met through their work in the hospitality, fashion, and food and beverage industries. There are a variety of rooms, ranging from three Lushna A-frame wooden cabins to the Writer Studio, which comes with a writer's desk and typewriter as well as 270-degree views of the mountains. "We wanted to create a cozy space where you can curl up after a day of hiking or skiing, and just relax," says co-founder Bjorn Boyer.

The Details:

The Salon (capacity: 30 guests) features a midcentury-electric look with a hint of clean urban design energized by the hotel's backcountry. The space includes a full-service cocktail bar, thoughtful design touches purchased from local antique vendors and vintage board games and books. The Upper Lawn (capacity: 125 guests) can host outdoor or tented events with the vast Catskill backcountry and Windham mountain as its backdrop. The lawn includes the property's fire pit where guests can roast marshmallows. Large family-style supper and open fire cooking are two of the hotel's preferred serving styles, with the intention of instilling a sense of home and comfort into a gathering.



ACE HOTEL NEW YORK

 @acehotelnewyork
 acehotel.com
 New York, New York

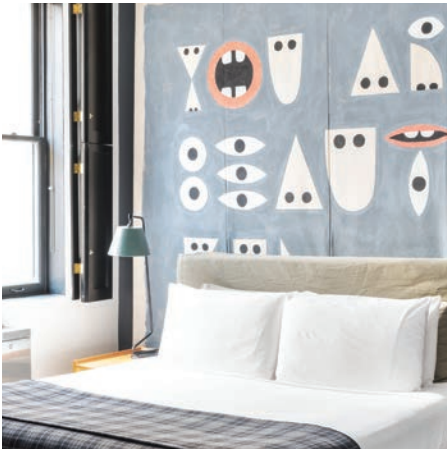
Photo-Worthy Features:

At the corner of Broadway and 29th Street in Manhattan's NoMad neighborhood, Ace Hotel New York's lobby is abuzz with creative activity, the kind that can only be found in New York City. In collaboration with New York-based design firm Roman & Williams, Ace Hotel New York is layered with a mix of styles, historical periods and objects. At every turn there's something that catches the eye, from the graffiti mural by collage artist Michael Anderson to the curio cabinet containing taxidermic birds. The myriad seating options have a comfortable, worn-in feel that invites guests and patrons to intermingle (or simply people watch), whether it's at the 18-foot laboratory table or around a coffee table at a leather couch. A Stumptown Coffee Roasters adjoins the lobby, as does The Breslin (the Michelin-starred English-style restaurant from April Bloomfield and Ken Friedman) and John Dory Oyster Bar.

Rooms feel like handsomely outfitted, industrially hip apartments and some are appointed with full-size Smeg refrigerators stocked with food and feature views of the Empire State Building.

The Details:

Liberty Hall is the largest space and can host a wide range of events like fashion shows, corporate meetings, cocktail parties, gallery shows and live concerts. The flexible 2,700-square-foot event space has parquet floors and 10-foot ceilings. The Boardroom is ideal for meetings, presentations or screenings and features a custom 20-seat walnut meeting table, Smeg refrigerator and office supplies. The 700-square-foot corner Loft Suites can host small meetings or cocktail parties.



 Ace Hotel New York is cool, creative and comfortable.

PHOTOS: ERIC LAIGNEL; KATHARINA; (OPPOSITE) STEVE FREIHON/TUNGSTEN LLC; FREEMANS; STEVE FREIHON; ERIC MEDSKER PHOTOGRAPHY



FREEMANS RESTAURANT

 @freemansrestaurant
 freemansrestaurant.com
 New York, New York

Photo-Worthy Features:

Tucked away at the end of an alleyway in New York's Lower East Side, Freemans Restaurant has a Colonial feel inside and out; lights are strung at the entrance and taxidermy adorns the tavern-like walls. "The building was moody and brooding and gothic, like an Edgar Allan Poe story," says co-founder Taavo Somer, who opened the restaurant with William Tigertt in 2004. Its menu, which changes seasonally, features dishes that beg to be photographed first.

BANZARBAR, the 20-seat cocktail bar located on the restaurant's second floor, opened in January 2018. Inspired by early 20th-century explorers and the BANZARE Antarctic expeditions, BANZARBAR is a cozy retreat with a speakeasy vibe.

The Details:

Freemans can accommodate 30-200 guests in its three private rooms or full restaurant buyout. The Wine Room is a working wine cellar and can seat 10-12 guests; the Blue Room seats 13-20 or up to 30 guests cocktail-style in an elegant dining room; the Red Room is the largest, seating 20-30 guests or up to 40 cocktail-style; and the Drawing Room can be used in combination with the Red Room and Blue Room and accommodate 30-80 guest seated or up to 100 cocktail-style. BANZARBAR can host parties up to 25 people.



ART FACTORY STUDIOS



📍 Branford, Connecticut



Photo-Worthy Features:

Used by Steven Spielberg in "West Side Story," Martin Scorsese, the NFL, HBO, Universal Studios, BET and more, Art Factory Studios is more than just a venue; it's practically a movie set. In other words, the entire venue serves as the perfect backdrop for your next Insta moment. Featuring a European-inspired courtyard, bridges, lofts, exposed brick and rustic décor, every spot of this venue serves as a photo op.

The Details:

Art Factory Studios is 400,000 square feet and can be rented for private events of any size, retail space, creative studios, or film/photo space. Owner David Garcia says it's frequently used for corporate events, weddings and bar/bat mitzvahs.



📍 @artfactorypaterson 🌐 myfactorystores.com



TINY'S & THE BAR UPSTAIRS

📍 @tinysnyc
🌐 tinysnyc.com
📍 New York, New York

Photo-Worthy Features:

Wedged between two TriBeCa brownstones, a three-story pastel pink neighborhood eatery draws regulars as well as far-flung visitors and influencers in equal measure. But the now iconic façade of the narrow 1810 Federal-style townhouse is just one of the family-run restaurant's photogenic features. Inside guests will find a whimsical mix of original and restored raw elements, from pressed tin ceilings, exposed brick, embossed wallpaper and salvaged wood paneling to vintage furniture, mismatched tableware, custom banquettes, pew seats and hand-made tile. With one of the city's only remaining original wood-burning fireplaces, Tiny's creates a charming, cozy and inviting atmosphere filled with old New York character.

The Details:

The quaint townhouse on West Broadway offers groups a range of private event options. The first-floor dining room, featuring the restaurant's fireplace, is well-suited for business dinners and intimate private social celebrations, while the second-floor "Bar Upstairs," featuring a copper pressed and marble bar and charming neighborhood views, is ideal for semiprivate seated meals or cocktail-style receptions. Groups can also work with the Tiny's team to coordinate full townhouse buyouts.

PHOTOS: DAVID GARCIA; PAUL WAGTOUNICZ; (OPPOSITE) GRAMERCY PARK HOTEL

GRAMERCY TERRACE AT THE GRAMERCY PARK HOTEL

@gramercyparkhotel
@gramercyterrace
gramercyparkhotel.com
New York, New York

Photo-Worthy Features:

Adjacent to New York City's only private park, the 18-story Gramercy Park Hotel has become a home away from home for creative minds and distinguished guests for nearly a century as a "modern grand hotel with a spirit of bohemia," says Director of Sales and Marketing Danielle Choi. Originally opened in 1925, the art-focused Renaissance Revival property feels more like a gallery than a hotel, featuring a playful mix of color, texture, opulent custom-designed furnishings and an impressive rotating collection of contemporary masterpieces (displaying over \$50 million of artwork at any given time). "Boasting a one-of-a-kind design by artist Julian Schnabel, the [Gramercy Park Hotel] is a true work of art in itself," Choi says.

The Details:

While the hotel offers seven luxury guest suites, a nearly 2,000-square-foot Penthouse suite and The Park Room—an intimate divisible event space—all well-suited for intimate dinners, business meetings and cocktail parties, the 4,300-square-foot Gramercy Terrace is a true gem. Perched on the 18th floor, the Terrace's interior salons feature the works of Andy Warhol, David Salle and others while lush gardens and views of the Chrysler Building and Empire State Building create a rooftop oasis for groups of up to 250. Fully weatherized with a retractable glass roof, the enclosable Terrace is also one of the city's few venues where planners can organize an outdoor event without need for a plan B.



#GramercyParkHotel





THE GOODWIN

@goodwin_hotel
 goodwinhartford.com
 Hartford, Connecticut

Photo-Worthy Features:

Originally built in 1881 as an upscale apartment complex, the hotel was converted in the late 1980s in conjunction

with the Goodwin Square project and later closed in 2009. The original English Queen Anne terra cotta façade was reserved then and again when it was fully renovated and reopened in June 2017. The hotel's thoughtfully designed guest rooms and interior spaces feature original architectural elements as well as modern amenities.

The Details:

The Goodwin can accommodate corporate meetings and galas with its 3,000-plus square feet of event space. The Atrium can seat about 250 guests. The hotel's on-site restaurant, Porrón & Piña, is the exclusive caterer.

PHOTOS: ROBERT A. LISAK; WINTER CAPLANSON; THE GOODWIN; (COMPOSITE) CONNECTICUT FOOD AND FARM; GLASSHOUSES



#millwrightsrestaurantexperience

MILLWRIGHT'S RESTAURANT AND TAVERN

@millwrightsrestaurant
 millwrightsrestaurant.com 860.651.5500
 Simsbury, Connecticut

Photo-Worthy Features:

Between its waterfall, covered bridge, dining room, loft and tavern equipped with a cozy fire-place, Millwright's Restaurant and Tavern has more Instagrammable moments than you could ever dream of. General Manager Vanessa Walsh describes the venue as rustic, historical and stunning. "It's great for all celebrations of life! We are known for our weddings, bridal showers, baby showers, corporate dinners, pharmaceutical dinners, birthdays and bar/bat mitzvahs," she says.

The Details:

The entire space is 8,000 square feet, which can accommodate 267 people. The dining room can host 90 people seated, the tavern can seat 80 people, and the Loft is the smallest space perfect for up to 50 seated guests. To create a unique event, Walsh says the team at Millwright's is always willing to accommodate any event planner's needs.

"We are happy to sit down and discuss any event details to make sure that we can tailor our menu and space based upon guest preferences," she says. "We are extremely accommodating for food allergies and/or dietary restrictions."



GLASSHOUSES



New York City, New York



#experienceglasshouses
 #theglasshouse
 #glasshousechelsea



Photo-Worthy Features:

With two locations in Manhattan, The Glasshouse and Glasshouse Chelsea offer sweeping views of the city and river. "We refer to our spaces as a blank canvas that allows our clients to create their vision through customization and branding. However, the most photo-worthy element is our views," says Vice President of Strategy Megan Lerchenmuller. "We offer penthouse event spaces with floor-to-ceiling windows and outdoor terraces with incredible views of New York City and the Hudson River."

Because The Glasshouse is such a large space, Lerchenmuller says it's ideal for fashion shows, large-scale conferences, trade shows and galas.

The Details:

The modern, multifunctional space is equipped with built-in production infrastructure for hosting corporate, social and nonprofit events. The Glasshouse Chelsea is 7,500 square feet throughout two stories and can host 150 seated or 200 for a cocktail event. The Glasshouse, the newest location, is 75,000 square feet and can host 1,850 people.



@the.glasshouses
 theglasshouses.com



#wythehotel

WYTHE HOTEL

@wythehotel | wythehotel.com | Brooklyn, New York

Photo-Worthy Features:

Designed to reflect the creative spirit of the Brooklyn borough, the 70-room Wythe Hotel is industrial-chic done right, blending old and new to breathe life into the nearly 120-year-old space. Exposing the former barrel factory's original cast iron columns, pine ceilings and original brickwork, the Wythe's meticulous restoration also included the creation of furniture and other accents from the factory's salvaged wood. Stationed on the Williamsburg waterfront, the property features large and airy loft-like rooms with concrete floors and walls of windows, charming vintage-inspired details like pendant lights, bistro tables and Thonet chairs as well as King Kong Manhattan and Brooklyn skyline views.

The Details:

"With over 8,500 square feet of meeting space, our seven versatile event venues are rich with original historic character and offer an elegant setting for everything from meetings and presentations to cocktail parties and weddings," says Event Sales Director Ashley Edery. The 2,100-square-foot Main Hall, featuring masonry walls, a marble-topped wood bar, steel-framed factory windows and antiqued mirrors, can accommodate up to 190 guests for conferences. The hall can also accommodate up to 250 guests for cocktails or 400 when combined with the adjacent Garden Terrace. The open-air, brick walled courtyard paved in European black and white tile is embellished with greenery and overhead bistro lights and comes with its own private entrance from Wythe Avenue and is an ideal fit for long-table dinners or al fresco cocktail receptions. The 550-square-foot Cooper Room's reclaimed wood doors, vaulted ceiling and antique chandeliers create an intimate space rich in historic detail for groups of up to 60 while the 7th- and 8th-floor lofts offer stunning corner suites for presentations and meetings for up to 45 guests. Lemon's, the Wythe's nectarine-hued rooftop bar offers groups of up to 200 space for semi-private or al fresco gatherings or guests can descend through a private entrance to meet in the hotel's speakeasy-style Screening Room and bar with access to a full HD digital projector and built-in A/V system.



Bill Miller's Castle is one part elegant, one part rustic.

BILL MILLER'S CASTLE

@bill_millers_castle | billmillerscastle.com | Branford, Connecticut

Photo-Worthy Features:

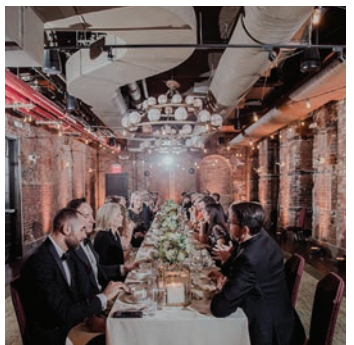
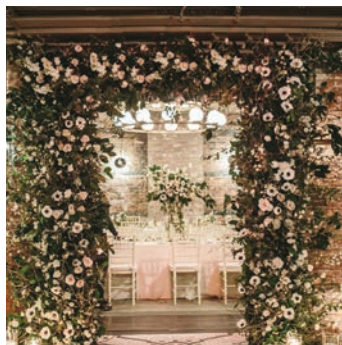
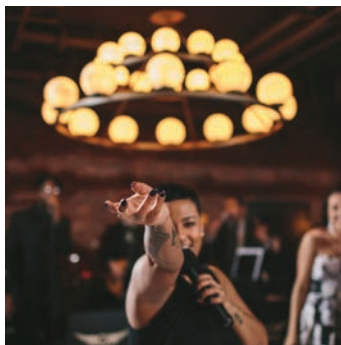
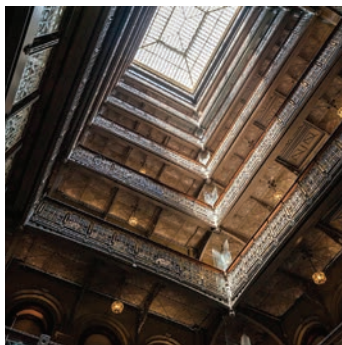
Bill Miller's Castle is a venue literally fit for a queen or king. With a blend of rustic and elegant features throughout the space, Bill Miller's Castle is a large one-event-at-a-time facility, according to Victoria Smith, event coordinator. This venue offers a unique Instagrammable space as each event has exclusive use of the entire castle and grounds—both filled with indoor and outdoor photo ops.

The Details:

The minimum requirement is 75 people, while certain days/months require more due to higher demand. The maximum capacity is 250 guests. "We are family-run and have been in business for more than 50 years," Smith says. "We pride ourselves in exceptional service and attention to detail."



#TheBeekman



The Beekman was one of New York's first skyscrapers and still dazzles today.

THE BEEKMAN, A THOMPSON HOTEL

@thebeekmanny thebeekman.com New York, New York

Photo-Worthy Features:

Originally one of Manhattan's first skyscrapers, The Beekman's rich history as a New York landmark may be a popular draw for visitors, but its striking nine-story glass-capped Atrium has become the hotel's undeniably photogenic star. Featuring the building's original wrought-iron railings, the Atrium, like many of the hotel's spaces, provides an event setting steeped in Gilded Age grandeur. Furnished with vintage Persian rugs, rich leather, antique glass lamps, art deco and industrial light fixtures and chandeliers and accents of polished

timber and warm exposed brick, the lovingly restored property blends classic glamour and contemporary charm to create luxe, cozy and Insta-worthy moments around every corner.

The Details:

With four distinct event spaces The Beekman offers groups a total of 4,700 square feet of meeting space including the 1,200-square-foot Clinton Hall. Named after the library that once stood on the same site the stately space features arched entries, crystal chandeliers and floor-to-ceiling windows for plenty

of natural light. Groups can also book a combination of The Beekman's lower level meeting spaces—including the Farnsworth Room, Kelly Room and an adjoining prefunction space—boasting vaulted ceilings and exposed brick, for groups of up to 225 guests. The hotel's signature Turret Penthouse rooftop oases are also available for private events as well as Alley Cat, The Beekman's hidden cellar lounge which is available to large party reservations and buyouts. Acclaimed chef and restaurateur Tom Colicchio's team is also on hand to conceptualize exclusive event menus. 