

February 16, 2022

Software Capture for PC - Update v11.0.0.0 Released to US, CAN, and EU Zones

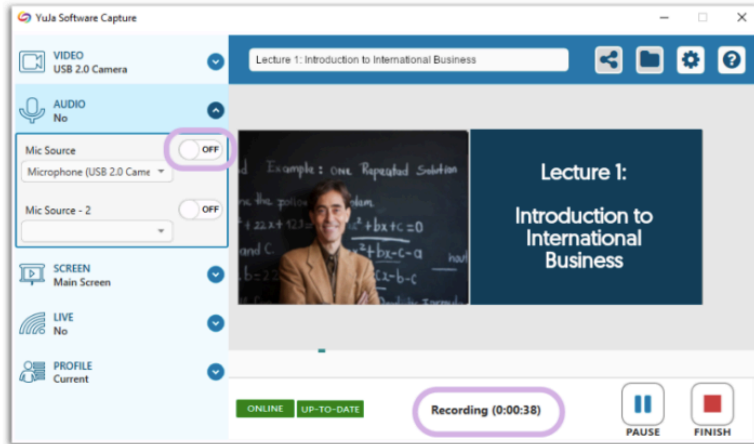
CANADIAN ZONES ENTERPRISE VIDEO PLATFORM EUROPEAN UNION ZONES SOFTWARE CAPTURE FOR PC SOFTWARE CAPTURE FOR PC UNCATEGORIZED

We have successfully pushed an update to all instances residing in the US, Canada and the European Union. This release was focused on introducing a new, high-performance Capture Engine, providing users the ability to switch sources mid-recording, additional sign-on capabilities, additional language services, refreshed UI layout to meet accessibility standards, optimized use of space, and much more!

The application will be rolled out iteratively through the quarter to Zones. If you would like to request your Zone be enabled proactively, please reach out to your Customer Success Manager.

1 Dynamic Source Switching During an Active Recording Session

This update will allow users to switch their audio, screen and video source during an active recording session. This would allow a Content Creator to turn on a microphone during a demonstration, and then stop it and return back to a video-and-screen presentation. While this feature is currently available for Software Capture recordings, for future releases, we intend to make this update available for live streams and exam proctoring sessions.

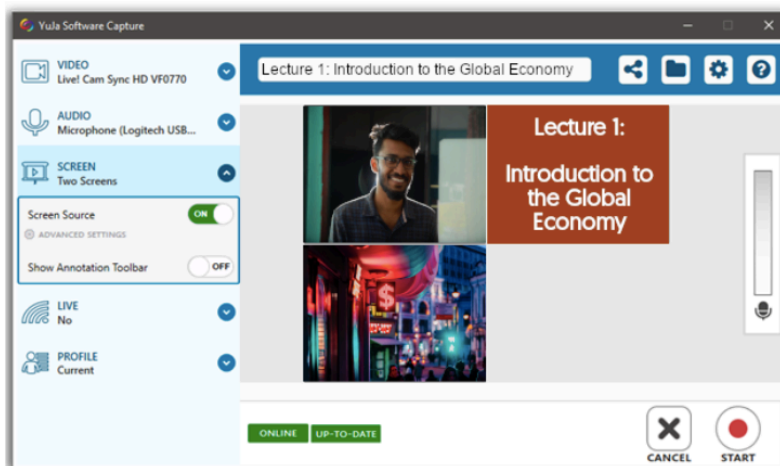


2 Brand New Engine Optimized Around the Latest Graphics Chipsets and GPU Hardware Accelerators including Intel QuickSync and NVIDIA NENC

We've been hard at work re-building the capture engine from the ground up. The new recording engine is able to take advantage of on-board and off-board graphic cards, as well as newer CPU instruction sets. The result is lower CPU utilization during recording and an even higher-quality recording afterwards. This includes improved performance with Intel QuickSync and NVIDIA NVENC. For the follow-on release, we will be rolling out similar optimizations in the live stream experience.

3 Refreshed User Interface for 3+ Source Views on Confidence Monitor

The Confidence Monitor now optimizes the video preview window size for the number of sources. In the event that 3+ sources are being recorded, the UI will shrink-and-stack sources so they are all within view. This saves users from having to constantly scroll back-and-forth, and, allows for Content Creators to view all three sources simultaneously.

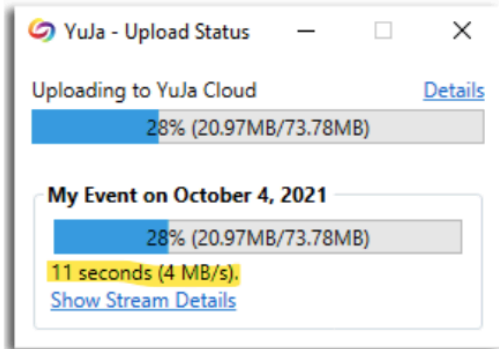


4 Improved International Support for French and Spanish

To make Software Capture accessible to users of all linguistic backgrounds, we have now updated the UI to be fully internationalized for our French and Spanish speaking users. In future releases, we intend to provide our Software Capture in Portuguese.

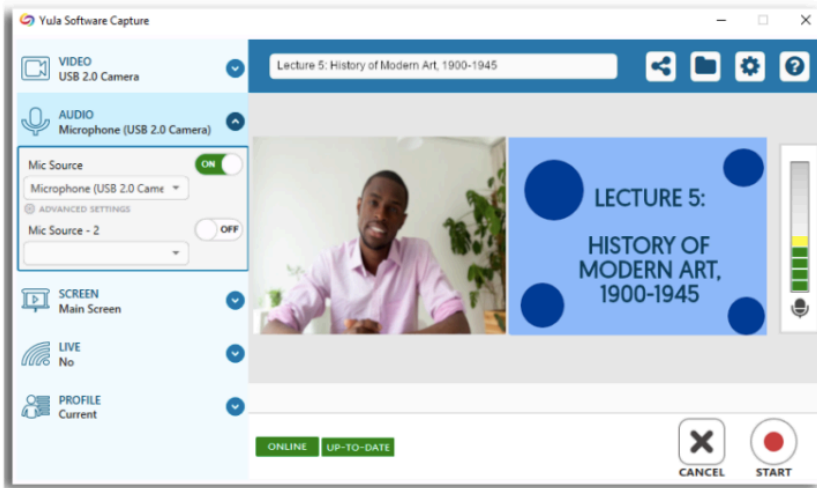
5 Estimated Upload Time Available and Upload Session Integrated with Upload Window

Users now can see their Internet connection speed and the estimated upload time of their recordings within the Upload Status window.



6 Improved UI Color Scheme to Support Accessibility Needs

Standing firm on our promise to make learning accessible to students from a variety of accessible needs, we have improved the color contrast and palette of the Software Capture to support users with visual difficulties. This allows users to navigate, interact, and record with ease.



7 Automatic Exclusion of the Recording Toolbar on Updated Windows 10 or Greater

To support genuine full-screen recordings and to prevent any visual obstacles over significant content, the Recording Toolbar will now be automatically excluded from the resultant recording and live-stream experience.



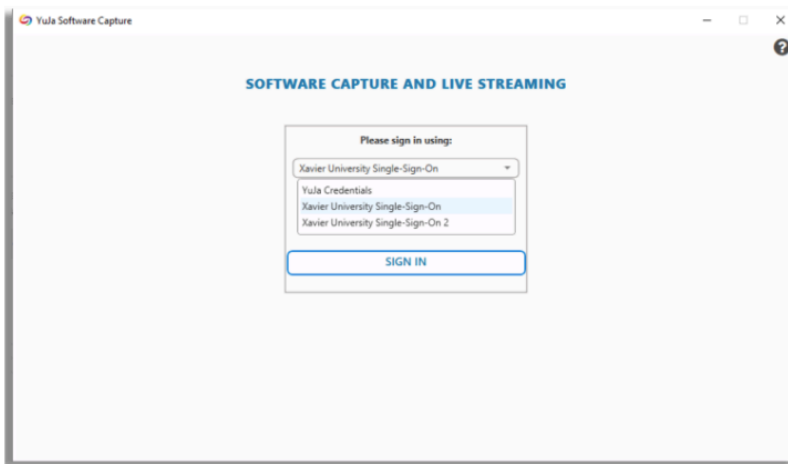
8 Click-and-Drag Recording Toolbar

In an effort to provide users more control over their preferred recording session layout, we've made the Recording Toolbar movable.



9 Software Capture now Offers Additional Single-Sign On Ability

Users will be able to log-into two different accounts simultaneously with the provision of an additional single sign-on.

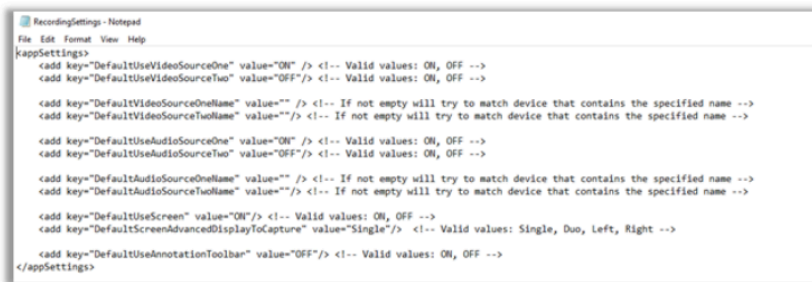


10 Ability to Select from Multiple Internal Audio Options

This update now allows users to select from an extended list of internal audio options and be able to switch internal audio sources mid-recording.

11 Silent Installation Configuration File Supports the Ability to Specific Peripherals, Screen Configurations, and Settings

Institutions using auto-deploy products such as Microsoft System Center Configuration Manager (now called Microsoft Endpoint Configuration Manager) can now specify how the remotely deployed Software Capture's peripherals should be configured. This includes default video and audio sources, default screen recording settings, and whether the annotation toolbar should be on or off by default.



12 Optimization Upgrades

To provide users an enhanced Software Capture experience, we have addressed and resolved minor bugs and issues.

