

On with the SHOWS!

By Lakendra Lewis

Summer is fast approaching, and while that normally signals the beginning of the summer blockbusters, local lovers of the arts will be happy to know the play is also still the thing. San Antonio local theatre is in full swing this month with a variety of live musicals and plays offered by a number of prestigious venues, from the improvisational to the historical.

PUBLIC THEATER OF SAN ANTONIO

She Loves Me (May 20-June 12) – Meet Amalia and Georg, two squabbling shop clerks who work in a European perfumery during the 1930s. When both answer a lonely-hearts ad, sparks start to fly as the two workers start to receive and exchange love letters from unknown secret admirers. Mischief, of course, ensues as the desire for each to uncover the identities of their new loves sets in motion a musical journey of twists and turns you will not want to miss.

Featuring music by Jerry Bock and Sheldon Harnick (*Fiddler on the Roof*) and book by Joe Masteroff (*Cabaret*), *She Loves Me* is an intimate and touching production that has been nominated for numerous accolades, including five Tony Awards in 1964, an Olivier Award for Best Musical Revival and the Drama Desk Award for Outstanding Revival of a Musical, just to name a few. The show was an inspiration for the classic 1993 romantic comedy “You’ve Got Mail” starring Tom Hanks and Meg Ryan and boasts a range of characters audiences will love.

Standard show tickets are \$45; \$30 for military, students and seniors; and \$15 for children under age 12.

Formerly known as the San Pedro Playhouse, the Public Theater is dedicated to producing high quality theatrical productions year-round in multiple venues

that has garnered the organization a reputation as one of San Antonio’s premier venues for professional theatre.

CLASSIC THEATRE OF SAN ANTONIO

Misalliance (May 12-29)

– The intrigue of this timeless play penned by George Bernard Shaw takes place at a country estate in Edwardian England where a seemingly typical garden party becomes the setting for love, sex, marriage and death embodied in Shaw’s witty writing style. At the center of the play, which originally debuted in 1910, is Hypatia, the daughter of a self-made underwear mogul who is bored with the stuffy attitudes of the aristocracy. But things take a lively turn when an airplane suddenly crashes into the family estate, bringing new and attractive characters into the fray. Audiences will laugh out loud as the battle of the sexes gets turned on its ear in this fun, fast-paced show.

Performances are at 7:30pm on Thursdays, Fridays and Sundays (NO Saturday performances) at the San Antonio Botanical Gardens.



Magik Theatre



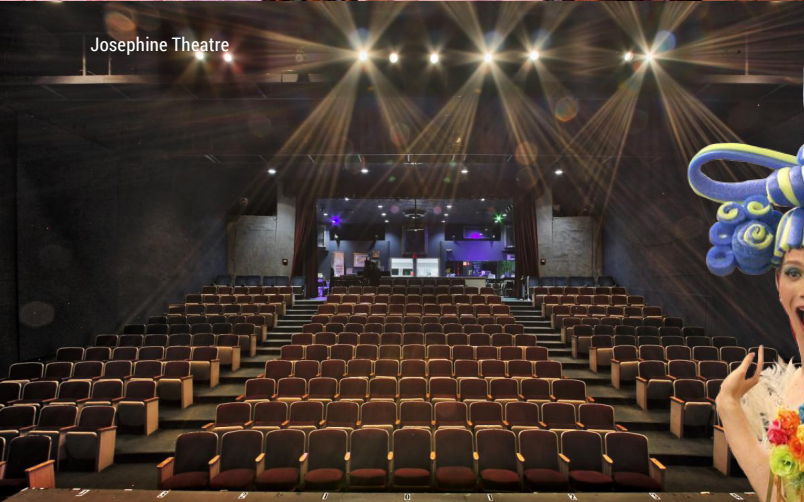
Woodlawn Theatre



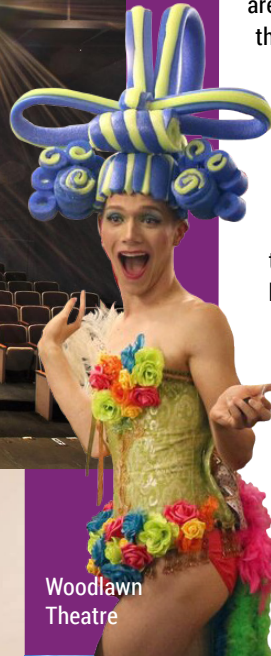
Magik Theatre



Classical Theatre of San Antonio
Misalliance (Courtesy of American Players Theater)



Josephine Theatre



Tickets are \$39 for general admission; \$34 for seniors, students and military; and \$24 for children. Playgoers are welcome to bring their own chairs and/or blankets.

The Classic Theatre was founded in 2008 and is a non-profit professional organization that, in conjunction with The Actor's Equity Association, produces five main stage shows a year, as well as a set of smaller productions known as their Second Series.

MAGIK THEATRE

Junie B. Jones: Toothless Wonder (May 6 – June 12) – Uh-oh... one of Junie B. Jones' top front teeth is loose and she is not happy about it. What if she looks like toothless Uncle Lou? And what is with all this tooth fairy business? Plus, that meanie Jim in Room Nine at school invited everybody to his birthday party on Saturday except her, and now Junie B. is wondering should she have her own birthday party six months early and not invite Jim? Or should she move to "It's a Small World After All" in Disneyland? Find out as Junie B. sets out on an adventure to answer these questions—based on the book series by Barbara Park—at the Magik Theatre located in Hemisfair.

Join in for this sensory-friendly performance, where families are invited to relax, be themselves and enjoy a judgment-free theatre experience that will have audiences singing, laughing and dancing. The performances are designed with both children and adults on the autism spectrum and those with sensory sensitivities in mind.

Purchases are only available at the door on the day of the show. Visit the Magik Theatre website for information on tickets, group rates and special performances, as well as how to take part in the organization's children's camps and classes.

The Magik Theatre has been providing San Antonio kids and their families with professional literature-based theatre and education since 1994, serving over 2.5 million visitors in the past 25 years.

THE HARLEQUIN THEATRE

Misery (April 29-June 4) – Adapted for the stage from the best-selling Stephen King novel, *Misery* follows the



Woodlawn Theatre



Josephine Theatre



Woodlawn Theatre

click on this:

PUBLIC THEATER OF SAN ANTONIO

www.ThePublicSA.org

CLASSIC THEATRE OF SAN ANTONIO

www.ClassicTheatre.org

OVERTIME THEATER

www.TheOvertimeTheater.org

THE HARLEQUIN THEATRE

www.Facebook.com/theharlequinsa

MAGIK THEATRE

www.MagikTheatre.org

THE JOSEPHINE THEATRE

www.JosephineTheatre.org

WOODLAWN THEATRE

www.WoodlawnTheatre.org

reluctant relationship between famous romance novelist Paul Sheldon and his “number one fan,” Annie Wilkes. After being rescued from a car crash, the injured Paul wakes up to find himself in Annie’s remote home, where she has been nursing him back to health. But while Paul is convalescing, Annie reads his latest book and discovers Paul has killed off her favorite character, Misery Chastain. Enraged, Annie forces Paul to write a new Misery novel as if his life depends on it. And it does. Audiences will be on the edge of their seats for this suspenseful play! Call (210) 222-9694 for information on tickets and showtimes.

As one of the few performing arts theatres in the military, the Harlequin Theatre produces a variety of productions throughout the year, from musicals and mysteries to Shakespeare and Simon, with the help of community volunteers. The Harlequin is located on the base at Fort Sam Houston and was formerly one of San Antonio’s premier venues for dinner theatre.

OVERTIME THEATER

Weekend Improv (Fridays & Saturdays) – For anyone who ever watched “Whose Line is it Anyway” and thought, “I can do that!” weekend improv wants you for a night of laughs and comedy courtesy of longtime local improv group The Denials.

This hilarious troupe has kept audiences in stitches for more than a decade with a show that features long and short form improvisations utilizing stand up, games, classic movies, books, TV shows and all things pop culture. The group also performs adult-oriented comedy using the audience’s suggestions, so be prepared to get into the act!

Showtimes on Fridays start at 10:30pm with a \$5 admission at the door. Saturday performances also start at 10:30pm with a \$10 admission or \$8 with any mainstage show.

All performances are BYOB. Seating is limited so get there early to get a seat.

The Overtime also offers free improv workshops on Mondays starting at 9:00pm, which could lead to an opportunity to appear in a Friday night show.

Dedicated to providing original, innovative and accessible entertainment at an affordable price, the Overtime Theater’s motto is “theater for the people” through thought-provoking and innovative stage productions and workshops in acting, playwriting and comedy improvisation. The venue, which opened in 2007, prides itself as San Antonio’s answer to off-off-Broadway theatre, showcasing experimental and eclectic productions for people who do not normally go to live theatre.

Honorable Mentions:

THE JOSEPHINE THEATRE

This beautiful, historic Art Moderne style theatre opened in February of 1947 and remained one of the many independent movie houses that flourished in San Antonio through the 1960s before moving into the adult movie genre in the 70s and 80s. It has since been converted into a live theatre that showcases musicals. Be sure to check out its website calendar for future productions.

WOODLAWN THEATRE

This neighborhood venue is committed to growing and sustaining quality performing arts

and education in the Alamo City through year-round live theatrical performances.

Built in 1945 and known as “San Antonio’s community theatre,” The Woodlawn Theatre has been performing six main stage shows a year since 2012 with diverse productions ranging from well-known traditional musicals like *Anything Goes* and *Hello, Dolly!* to popular contemporary productions such as *In the Heights* and *Disney’s Beauty and the Beast*.

The outside of this award-winning venue boasts a trademark marquee while the interior features a beautiful lobby and full-serve concession area along with an auditorium that seats 260 on the floor in addition to 80 in the balcony. Movie legend John Wayne was so taken with the place that he chose it to host the world premiere of his film “The Alamo” in 1960. In 2013 the theatre was named a “City of San Antonio Historic Structure” making it a local historical landmark. The Woodlawn also offers a thriving youth program that includes a theatre academy for young performing artists and summer theatre camps.

For more information on open auditions and other collaborative opportunities with the theatre, visit its website.

WRITER’S BIO

Lakendra Lewis is an arts and entertainment journalist, editor and author whose articles have appeared in Edible San Antonio Magazine, The Texas Observer and San Antonio Christian Woman Magazine. She enjoys movies, music, cooking, singing and telling other people’s stories. You can contact her/read more of her stories at lakendralewis.journoportfolio.com.