



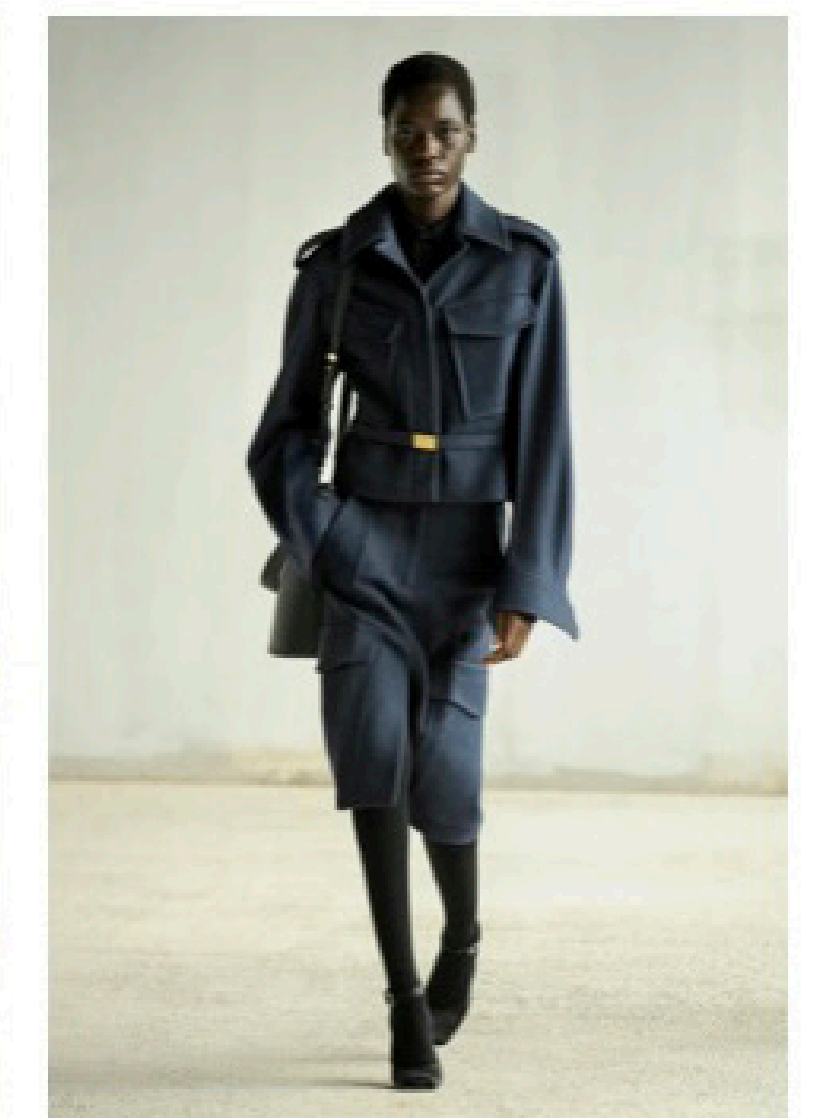
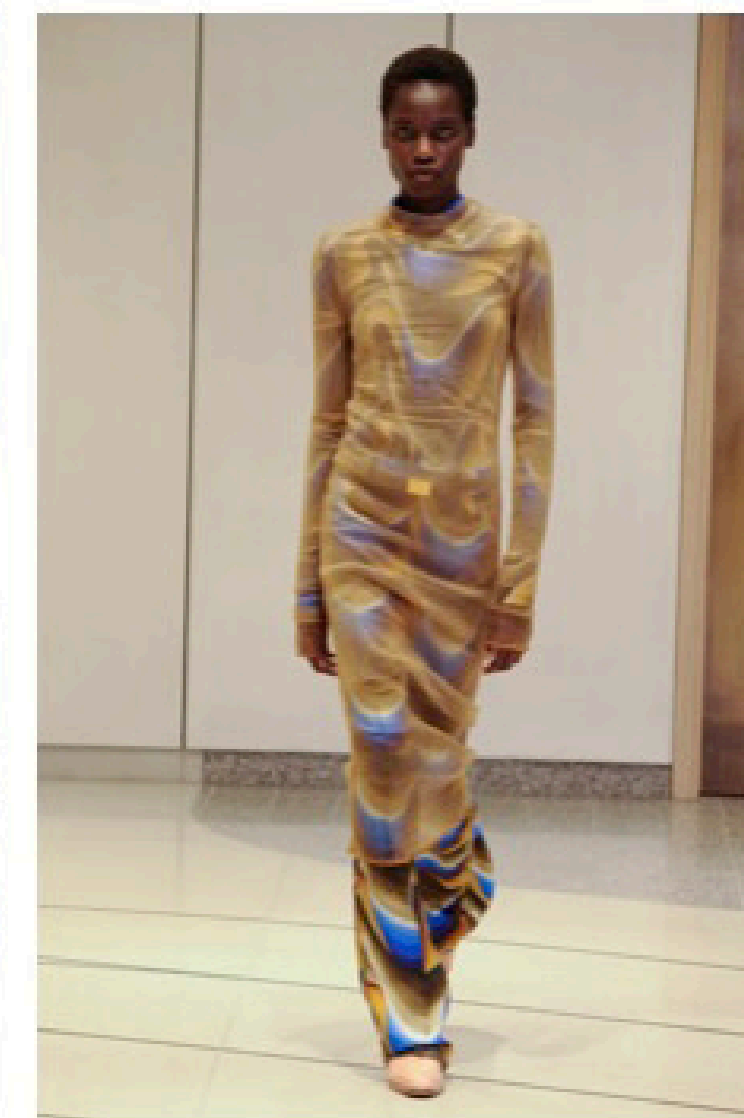
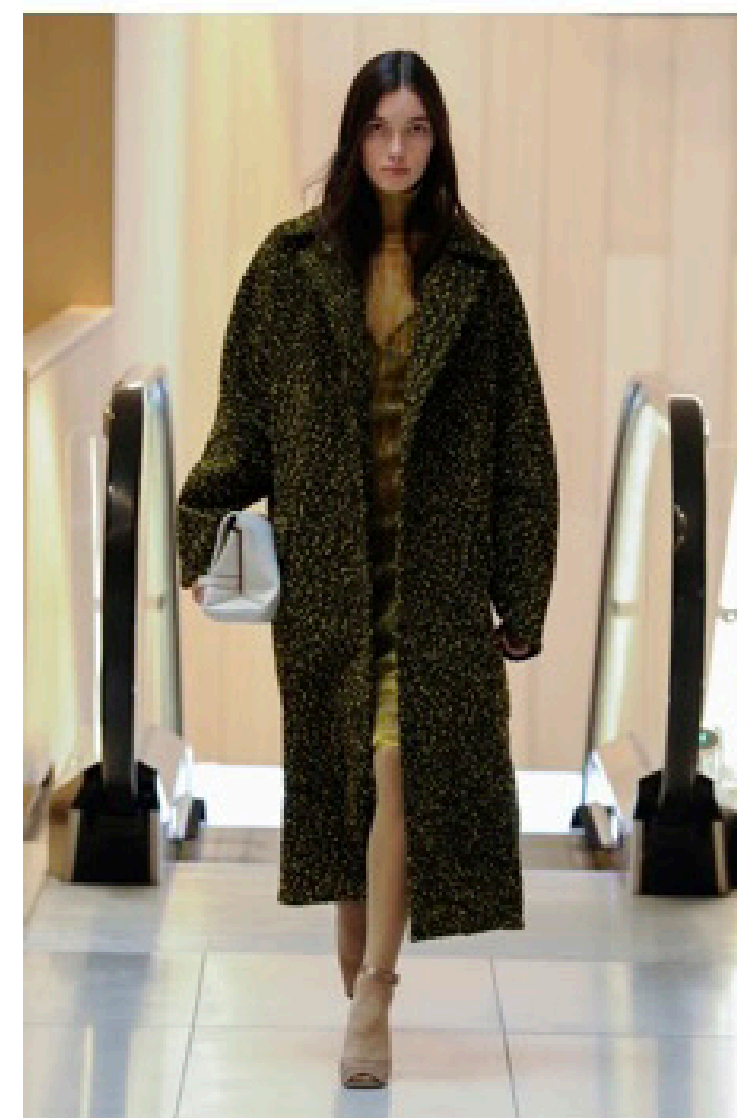
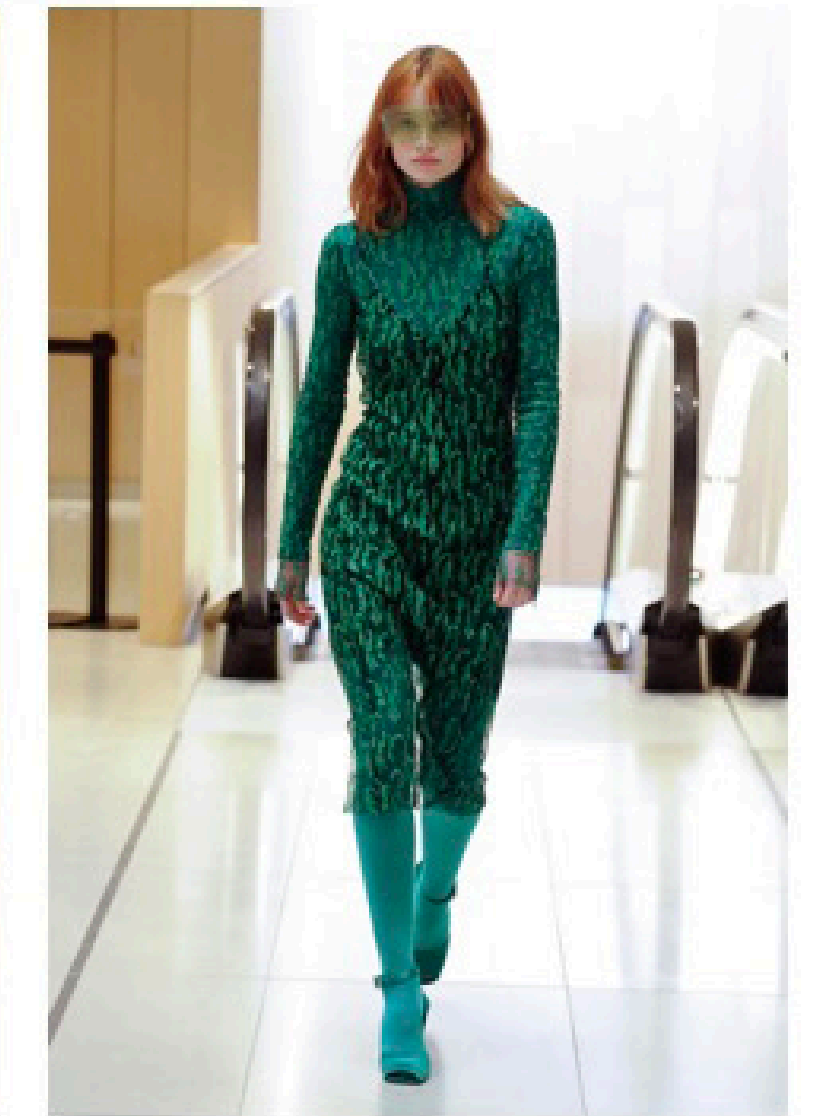
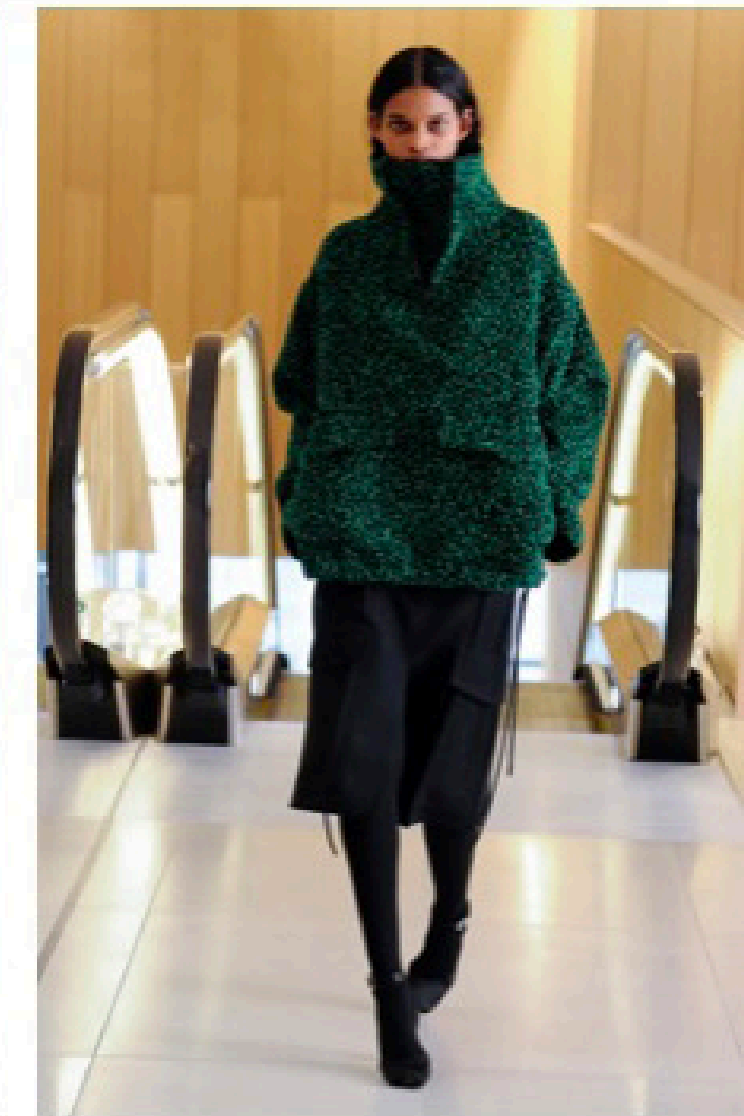
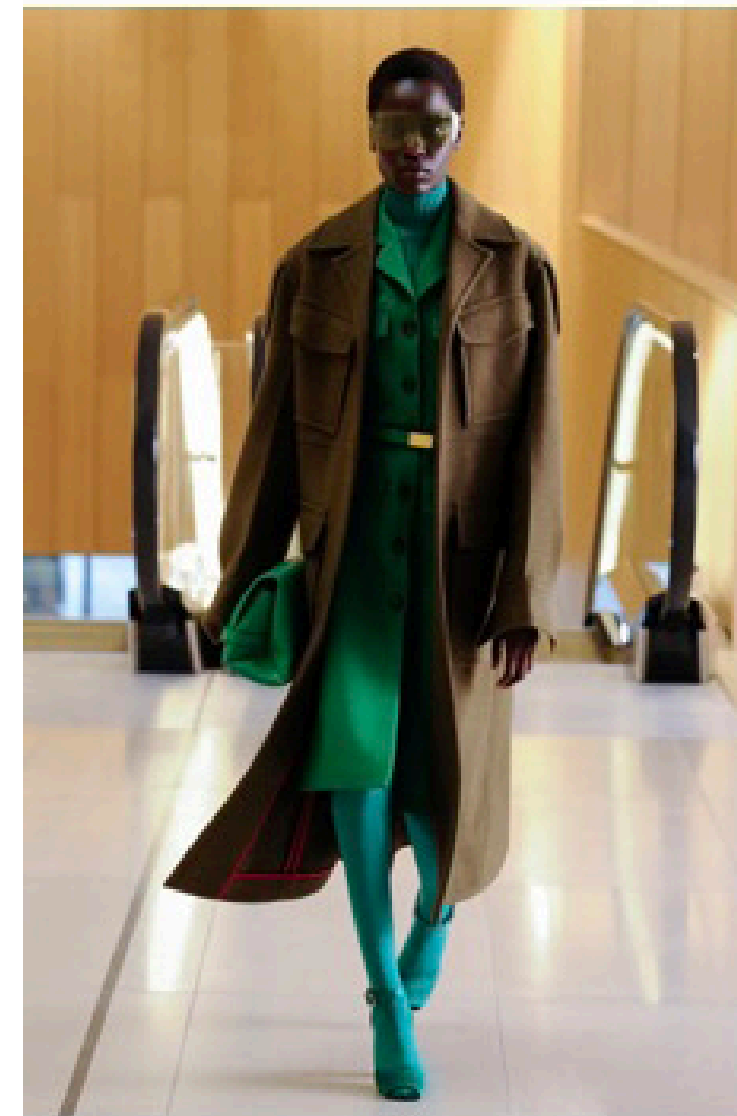
**FW22
COLLECTION
VICTORIA
BECKHAM**

Edit

It's creating a culture of fashion imbued with styling-focused details allowing the wearer to be their own stylist. To Beckham, playing with the functions of clothes is second nature, and she can't resist getting in there, wrapping and tying and layering whatever look is standing in front of her.

**In need
of inspiration
for a fresh
autumn
wardrobe?**

**FW22
COLLECTION**





"THIS SEASON'S WOMAN IS POWERFUL, STRONG AND CONFIDENT. WE WANTED TO CELEBRATE THE FEMALE FORM - WITHOUT GIVING EVERYTHING AWAY, SO FABRICS ARE LAYERED AND HIDDEN, BOLD SEQUINS AND PRINTS VEILED UNDER SHEER KNITWEAR."

Victoria Beckham, Creative Director

Sheer pieces hang suspended, poised, ready, and revealing in a collection built with control at its core. Suits are sleek, with strong shoulders striding alongside go-faster chevron stripes. Prints that resemble illusions swirl across form-fitting silhouettes, distorting and concealing.





FW22 COLLECTION VICTORIA BECKHAM

Edit



Beauty Moments

The Autumn Winter 2022 makeup look was a lesson in mastering a natural, effortless glow, celebrating the individual beauty of this season's women. The skin was prepped and primed, the eyes were brightened, and a light layer of gloss was applied to the lips.