

Acoustical Floating Floor Solutions Partner

Stravifloor & Stravigym systems help flooring contractors across the U.S. deliver high-performance, cost-effective projects that meet acoustic codes with ease.

Designed for efficiency and reliability, our solutions speed up installation, cut labor costs, and ensure lasting performance, so you can work smarter and boost your bottom line.



Get the support you need, when and where you need it.

Get technical assistance from our highly trained support team including Technical Sales, Project Delivery Managers (PDMs), and our design engineering team.



Technical Support

- Trained technical sales team
- Dedicated Project Delivery Manager for assistance
- Design Engineers who tailor acoustic solutions for performance



Documentation

- Step-by-step shop drawings for accurate installation
- Specifications & typical cross-sections for detailed planning
- Solutions tested in external labs, including NRC Acoustics Lab



Contractor-Focused Training

- Hands-on training for Stravifloor & Stravigym systems
- Covers concrete, panelized, discrete, and roll-out solutions
- Helps crews work faster, smarter, and more efficiently



Where To Get CDM Stravitec solutions

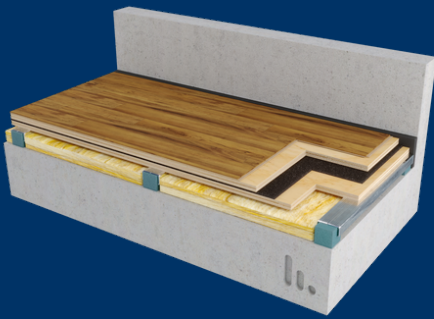
You can purchase acoustic floor solutions directly from CDM Stravitec. Contact us on your next project to get pricing information.

Gaelle de Puniet
Sales Manager Northeast



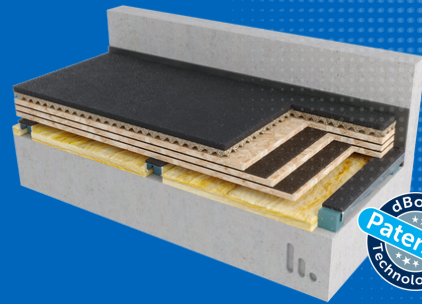


SCAN ME



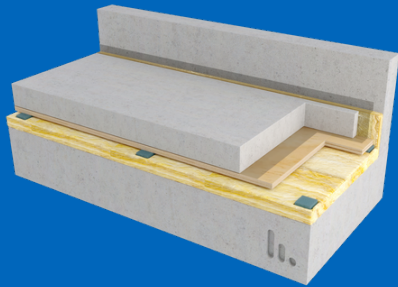
Stravifloor Channel

- Preassembled for quick, easy installation.
- No concrete needed - cleaner, faster process.
- Faster setup for earlier occupancy & payments.
- Superior acoustic isolation with lasting performance.



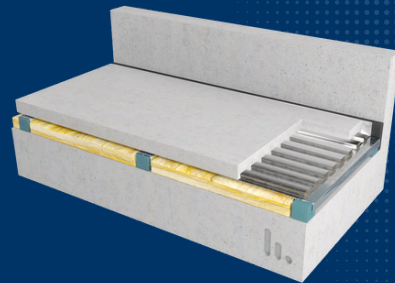
Stravigym

- Dry system - no curing time, faster installation.
- Easy transport & setup, saving time on-site.
- Flexible, easy to install, and dismantle if needed.
- Modular design allows for easy upgrades.



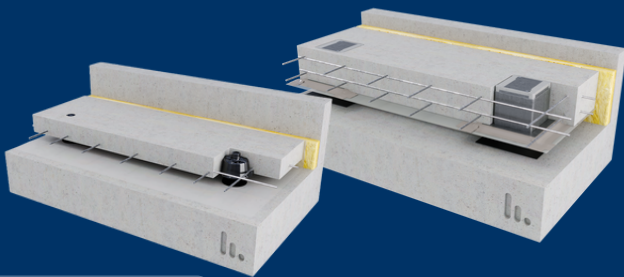
Stravifloor Mount

- Easy installation saves time and labor.
- One solution for multiple applications, reducing costs.
- Compatible with wet (concrete) and dry (panelized) installations.



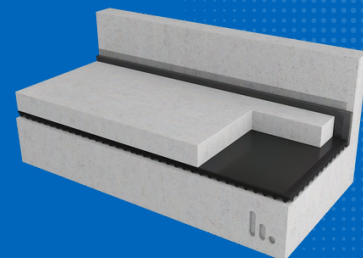
Stravifloor Deck

- Lightweight components for easy transport and installation.
- Supports thinner slabs (from 2" (50 mm)), reducing concrete use and costs.
- Fewer supports needed for faster setup.
- Built-in cavity for flexible service routing.
- Humidity-resistant and non-combustible, for durability.
- Fewer supports needed for faster setup



Stravifloor Jackup-E/R

- Fewer components for fast installation and reduced transport costs.
- No formwork needed, cutting labor, material costs and waste and excess material.
- Works with sloped slabs for added flexibility.
- Supports heavy equipment (e.g., during construction phase) for stability and safety.
- Ideal for complex geometries, reducing time and costs.
- Adjustable, replaceable bearings for long-term adaptability.



Stravifloor Mat

- Fast, easy installation reduces labor and complexity.
- Cost-effective with medium to high acoustic performance with minimal floor height.
- No formwork needed, cutting labor and material costs.
- Easy to cut around columns and obstacles.
- Reduced waste and excess material.