

Harvey Dunn, "Fixing Fence," 1944
Used with permission from South Dakota Art Museum



CONFLUENCE

RENOVATION & ADDITION
SOUTH DAKOTA *Art* MUSEUM



Proposal for Architectural Programming and Concept Development Services

This page intentionally left blank.



Design Redefined.

1112 N. West Avenue, Sioux Falls, SD 57104
phone (605) 336-1160 | www.teamtsp.com

Marshalltown • Marshall • Minneapolis • Rochester • Omaha • Rapid City • Sioux Falls • Sheridan

February 19, 2016



Leslie Olive, RA
SDSU Facilities & Services
Box 2150 FS 100
Brookings, SD 57007

John Ullman
Office of the State Engineer
523 E. Capitol
Pierre, SD 57501-3182

RE: Connecting people and art through a shared passion

Dear Members of the Selection Committee:

It is wonderful to see the South Dakota Art Museum seeking to grow and expand its reach as it provides access to people far and wide, bringing together people of different ages and backgrounds. You are fulfilling your mission as stewards of the state's art treasures—by collecting, preserving, and exhibiting visual works to provide access and education, and to foster appreciation of the visual arts for the people of South Dakota and beyond.

Almost 20 years ago, TSP had the great privilege of serving as your trusted design partner for the Museum addition and its new entry pavilion. We worked hard to collaborate with your team and create a building that fostered the arts. We are honored to be a part of your ongoing efforts to provide the general public with opportunities to view and form connections with art.

Your priorities to create additional exhibition space, provide greater storage and supports for your collections, and create new areas that encourage access and scholarly work will further your mission.

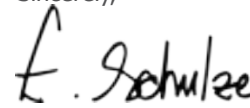
Our team understands what is required in spaces such as these because we have experienced them—lived in them, walked through them, and worked to enhance them. Project Designer Chase Kramer, a registered architect, has a degree in art. Senior Project Architect Paul Boerboom is as passionate about art today as he was when he helped you develop your design for the Museum addition. Since then, he has set aside time in his home studio and rediscovered his love for illustration and painting—earning a pair of statewide awards for his work in 2015.

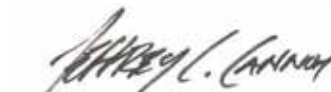
Your team's internationally renowned consultant, Jeff Cannon of Cannon Museum Group, has developed design standards for the Smithsonian Institution, renovated university buildings to house artworks in the Midwest, and created concepts for showpiece museums half a world away.

As your Principal-in-Charge for this project, I bring my own passion for art and arts awareness. I'm a current board member for the visual arts center at a well-respect arts and entertainment institution. There, I've had the opportunity to learn more about the language of art, as well as the logistics of exhibiting and caring for the art works.

Please consider this proposal an indication of our high interest and excitement in this project. As your design team, we will listen to your needs and create this addition to blend the old and new into a cohesive whole. We would love to help you discover our state's artistic story through the design of your cultural home.

Sincerely,


TSP, Inc.
Elizabeth Schulze, AIA
Principal-in-Charge


Cannon Museum Group
Jeffrey Cannon, President
Museum Consultant

This page intentionally left blank



Harvey Dunn, "The Prairie Is My Garden," 1950
Used with permission from South Dakota Art Museum

SECTION 1 | SPECIALIZED EXPERIENCE

Firm Profiles	1-5
Concentrated Focus	6-11
Relevant Projects	12-26

SECTION 2 | RESOURCES & PERSONNEL

Team Overview	27-28
Resumés	29-36

SECTION 3 | PROJECT APPROACH

Specialized Project Conditions	37-39
Methods	40-44
Record of Past Performance	45-46

SECTION 4 | PROJECT LOCALE

Availability & Knowledge	47-49
------------------------------------	-------

This page intentionally left blank



Section 1
SPECIALIZED EXPERIENCE

This page intentionally left blank

THERE IS NO 'ME' IN DESIGN

IT'S ALL WE. AND IT REVOLVES AROUND YOU.



Clients know this (and so do we): They're planning and design experts when it comes to their organization's culture and project needs.

Why? Because they live daily with the challenges and opportunities unique to their current environments. Their spaces dictate workarounds that expend time and energy. Yet even from here, they can see where they want to be—and imagine all the ways those smart changes can help get them there.

TSP exists to perform fulfilling work. Making our clients better at what they do is the surest way we know for our own people to find deep meaning in what we do. There's no separating the two. That personal connection is the very foundation of our focus on Exceptional Client Service.

TSP's architects, engineers, planners, and interior designers are exceptionally talented people. But client needs come before our own desire for self-expression. We believe our clients hold the keys to discover their designs, and that we have the knowledge and skill to unlock those ideas. It's why we seek out clients with complex projects that demand design expertise, integrated services, and fully engaged stakeholders to inform the work.

As a company, we're built around a few beliefs that resonate with our 100+ team members, in eight offices and five Midwest states. The heart of this philosophy stretches back to 1930 and our founder's credo to design it like we own it. Now, 85 years later, we hold to our core values of Trust, Ethics, Honesty, Responsiveness, Collaboration, and Commitment.

We've dedicated ourselves to pursuits that hold the greatest potential for communities: education, healthcare, and civic projects that uplift our quality of life. We find the greatest success when we use our skills and passion to develop the single best solution that meets a client's needs.

These are the tools we use to achieve Outstanding Design Solutions—where form, function, economy, and culture fit simply and beautifully to fulfill the client's story. It all makes sense. There is no undue complexity; nothing is contrived or out of place.



Harvey Dunn, "After School," 1950
Used with permission from South Dakota Art Museum

PROTECTING & SHARING HERITAGE



Cannon Museum Group is a woman-owned small business focused on museum and cultural development. Cannon Museum Group evolved from Jeffrey Cannon's 25-year career in museum development, management,

planning, design and architecture. Prior to co-founding Cannon Museum Group, Jeff was a full partner in two firms and vice president of one of the largest built-environment consulting companies in the world. In 2013, he chose to devote his career to particular projects that followed his passions among cultural institutions.

Our clients are either long-time acquaintances or new friends seeking long-term relationships built on trust and integrity. It helps that our knowledge and experience have unusual depth. The firm was established as two partners, Jeffrey Cannon (who holds advanced degrees in Architecture and Museum Studies) and Sharon Cannon (who earned her PhD in Psychology). We focus on human interactions with environments, the influence of culture, and sustainable economic models for museums. We are hands-on professionals who do all our own, original work.

The company offers a broad suite of services for museums and cultural institutions from transition management to comprehensive development and master plans. We work with only 2 to 4 clients at any given time, depending on project scope. Our personal, 100% commitment to each client is unique to the industry.

CULTIVATING A SENSE OF PLACE

CONFLUENCE

Confluence is a professional consulting firm comprised of landscape architects and planners. Our work includes a wide range of public, educational, institutional, and private sector projects. Our firm brings the skills of landscape architecture, land planning and urban design to each project, giving them the tools to merge the client's needs with the environment.

Momentum, energy, and depth: These three words best describe the passion, creativity, experience, and people of Confluence. We believe the values that we share define who we are and serve as the basis for our success. The same core principles set forth with our founding in 1998 continue to guide our growth, exceed expectations, better our communities, deliver exceptional service, and design built environments with a sense of place.

As site master planning leaders, we collaborate across disciplines, keeping our client's goals, budget and schedule at the forefront. We strive to Relate (we listen and hear you), Translate (we see what you're saying), Navigate (we simplify your journey) and Exceed (we amplify your outcome).

Great design is a managed process requiring the collaborative efforts of multiple people and skill sets— not an intuitive, happy accident. We expand the idea into a sustainable reality, the confluence of a client's needs and the value we add.



CONNECTING ART TO DAILY LIFE

South Dakota's culture, history, and heritage are inextricably linked. They help shape who we are today, and influence what we can become in the future. In our team members' experience, many projects designed within the "heritage and culture" sector become architectural icons—visited by thousands of people each year, and scrutinized by many more. Our top priority is to ensure that each building's legacy aligns with the shared vision of the people behind it.

MUSEUM SPACE PROGRAMS

The TSP Team will help you describe your facility's circulation patterns and requirements for adjacency and access. This typically includes a room-by-room identification of every technical variable that affects your spaces—light, humidity, and filtration among the top concerns. Our museum specialist, Jeff Cannon, will collaborate closely with the team's electrical and mechanical engineers to integrate building systems that provide the backbone for all museum functions.

COLLECTIONS & NEW WORK

Visual appeal, performance, and sustainability all will be critical to your finished product. But we'll keep focused on your primary drivers—the need to showcase important collections, provide spaces for scholarly and artistic work, and safeguard our state's collective memories. A quantitative and qualitative study of your key collections can help inform spatial and facilities requirements. This includes projection and provision for future growth, and for the security, documentation, and preservation of your collections.

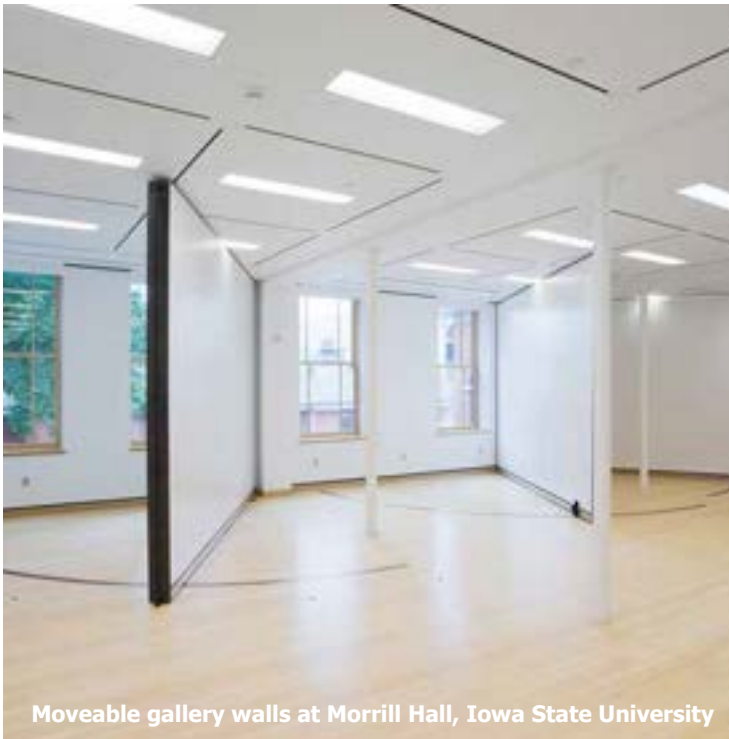
ARTISTIC SIGNIFICANCE

Together, we'll create an expanded South Dakota Art Museum that further enhances and maintains our cultural resources. When we've finished our planning and design work, you'll have an improved facility that enables you to uplift the state's vitality, livability, and national artistic significance.

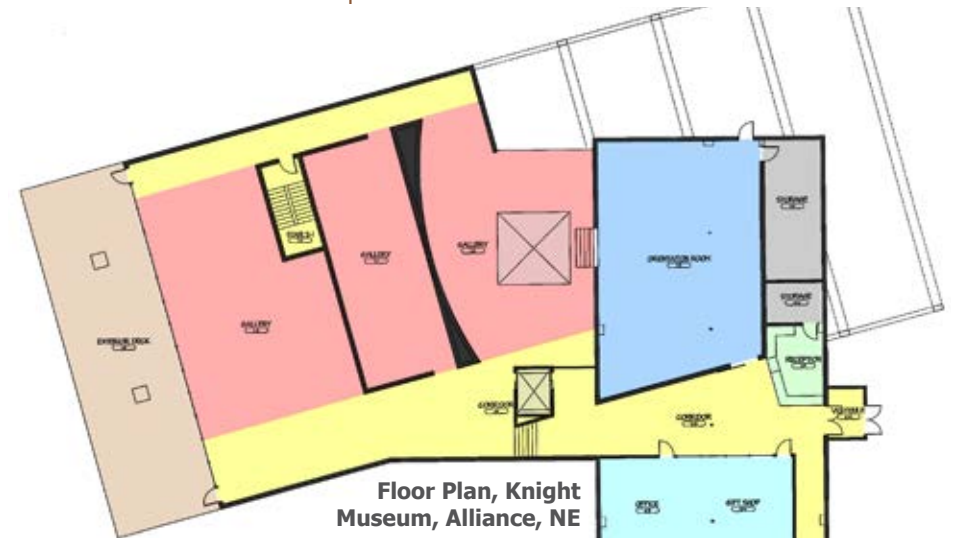


1 FORM & AESTHETICS

- Form to follow function, providing a platform to showcase the art
- Celebrate the University icon, the Campanile, by rooting project design in the surrounding context of the larger campus
- Inspire creativity and foster scholarly work
- Expand flexible space to meet needs for exhibits, storage and general staff work areas
- Be a beacon that provides access to all



Moveable gallery walls at Morrill Hall, Iowa State University

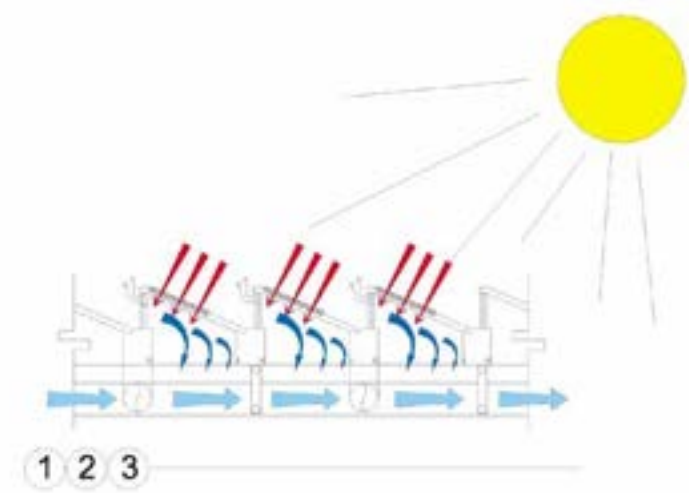


2 LAYOUT & FLOW

- Connect spaces in a way that makes sense for visitors and staff alike
- Design for diverse demographic audience and offer pathways that speak to various groups
- Identify a compelling organizing premise to engage visitors and lead them through Museum as a whole
- Allow collections to create a story-driven flow for visitors that also supports logistical patterns for exhibition installation, support services, and storage functions
- Shape visitor experience with intuitive, clearly defined spaces and subtle wayfinding cues (no overbearing signage that detracts from galleries or works)
- Use key pieces and artifacts of greatest significance as inspiration pieces to help inform the design, feel, and palette of new spaces
- Situate archive storage, curations areas, work rooms, and other private/semi-private spaces away from visitor "channels"

3 ENVIRONMENTAL CONTROLS

- Capture unique needs of Museum project in a comprehensive program for display and storage
- Describe optimum conditions for each type of media in relevant collections, including factors such as temperature, humidity, stability of controls, UV light, environmental pollutants, and life expectancy of Museum and archived materials themselves
- Assess building envelope condition, features, and limitations
- Discuss and select best air barriers and vapor retarders based on Museum collections and building materials
- Design mechanical, electrical, lighting, security, and fire protection systems as an integrated functional set so one subpart's operations do not negatively impact another's



Detail View of Climate Master Plan, National Museum of the U.S. Marine Corps Collections Facility, Quantico, VA



Collections Conservation Lab inside Morrill Hall, Iowa State University

4 WORK SPACES & SCHOLARSHIP

- Create private and semi-private areas for selected viewing of archival materials
- Develop support space and resources for students and Art Department faculty to further our state's collective understanding of the works in these collections, as well as the continued relevancy of the artist message
- Develop spaces that provide needed room for curations staff, volunteers, and other Museum workers to incorporate scholarly interpretations into visually compelling exhibitions that share new ideas with an increasingly broad and diverse visitor base
- Include sufficient rooms for "off-stage" functions, such as exhibit preparation and general storage of crates, pedestals, and related gallery furnishings

5 ARCHIVAL ASSURANCES

- Maintain deep and abiding respect for Museum collections and relationship to preserving our state's cultural heritage
- Determine need for various environments within archive spaces and whether transitional spaces should be used to acclimatize materials
- Collaborate closely with team members from engineering disciplines to design archival spaces with a series of built-in redundancies that maintain optimal environmental conditions—and include safeguards that trigger in the unlikely event that multiple systems fail
- Integrate systems for security and fire safety throughout building, but with special attention in this controlled environment (options could include video surveillance, electronic theft prevention/detection, highly sensitive continuous air sampling for heat and/chemical by-products detection, sprinklering, alarms, etc.)



Museum Support Center, U.S. Army



Eide-Dalrymple Gallery at Augustana University

6 EXHIBITION PROGRAMS

- Learn the Museum's current schedule and gain a thorough understanding of staff members' anticipated future trends for the venue
- Assess current processes and study flow of traveling and Museum-sourced exhibitions through the Museum site and within the Museum facilities
- Evaluate efficiencies in traffic patterns and processes, and together identify areas for improvement
- Develop plans for realistic changes that will add value for visitors and the Museum by reducing lag time and re-work, minimizing risk to and handling of artistic pieces, saving operational dollars wherever possible, and exhibiting works in a way that most fully realizes the Museum's strategic priorities

7 SYSTEMS & UTILITIES

- Coordinate electrical service relocation for Museum expansion and any anticipated future modifications
- Identify main drivers of Museum energy costs to inform research and presentation of the best and most efficient systems
- Analyze existing steam and condensate piping to determine best course for expanding/upgrade these systems
- Consider operations and maintenance issues
- Create integration plan with the entire grounds and facilities
- Develop energy models
- Design lighting to effectively highlight but yet preserve and protect exhibit pieces on display (e.g., essentially eliminate ultraviolet light while providing adequate illumination to display works as the artists intended)



8 PASSION FOR ART

- Internationally renowned Museum Consultant who spent 20+ years in Midwest and served on boards of organizations including Omaha Children's Museum
- Principal-in-Charge learned the language of art through renovation projects and board service at Visual Arts Center at Washington Pavilion, in Sioux Falls, SD—where Landscape Architects from Confluence are developing the adjacent Paladino-Hohm Sculpture Garden
- Senior Project Architect is award-winning artist who has collaborated with other fine artists on numerous projects—including several on university campuses
- Project Designer holds degree in art, as does team member who will provide Architectural Support for design group
- Landscape Architecture firm with strong history of creating living designs around flagship campus buildings for South Dakota State University

Paul Boerboom, Chase Kramer, and the TSP Team integrated several Scott Parsons mosaics in a renovation design for Saint Michael Parish, Sioux Falls, SD

THE PLACES WE EXPERIENCE ART TOGETHER

*T*he TSP Team offers you a core team of professionals who have directly related experience in the design of museums and cultural institutions—and intimate working knowledge of facilities and systems, both on the SDSU campus and within the South Dakota Art Museum itself. We bring innovative ideas and lessons learned from relevant project experience. And we possess a familiarity with the diverse functions and requirements contained in the places where we experience art together.

Despite rapid advances in technology and changes in the way that we process information, we feel a fundamental need to express the human condition through art. We chronicle our history, we celebrate the uniqueness of this place and its people, we look together for answers about what unifies or separates us.

Museums provide us an outlet to explore those thoughts and emotions. Within their walls, we share in something we can't explain—the piece that calls to us and holds us there, transfixed, as we lose track of time.



SECTION 1 | SPECIALIZED EXPERIENCE - RELEVANT PROJECTS



CHRISTIAN PETERSEN ART MUSEUM / MORRILL HALL RENOVATION

Christian Petersen was a contemporary of Grant Wood, having worked for Wood during the Great Depression's PWA Project (Public Works of Art). Petersen generally is credited with being the first artist in residence at an American university—Iowa State University.

It seemed fitting that the campus' oldest building be converted into a modern museum to house and display works from Petersen and others. Morrill Hall would transform from a neglected symbol of the University's early ideals to a bright space that also could house a textile museum and conservation lab.

Boosted by one of the largest grassroots fund-raising efforts in Iowa State's history, the renovation and restoration brought Morrill Hill from the brink of demolition to a beautifully restored landmark. Jeff Cannon's Site Master Plan developed the foundation for this massive undertaking, which encompassed 27,000 sf over four floors.

With two floors of gallery space, storage, and conservation areas, Morrill Hall still is more than a display house. The building also is home to the Center for Excellence in Learning and Teaching, with various workshop areas and several University classrooms on the upper levels.

Morrill Hall was the first building at an Iowa regent institution to achieve LEED certification, and just the seventh building in Iowa to receive the designation. It is among only a select few LEED-certified buildings in the nation that also is on the National Register of Historic Places.



LOCATION

Iowa State University
Ames, Iowa

SCOPE

27,000 sf across four floors

TOTAL RENOVATION COST

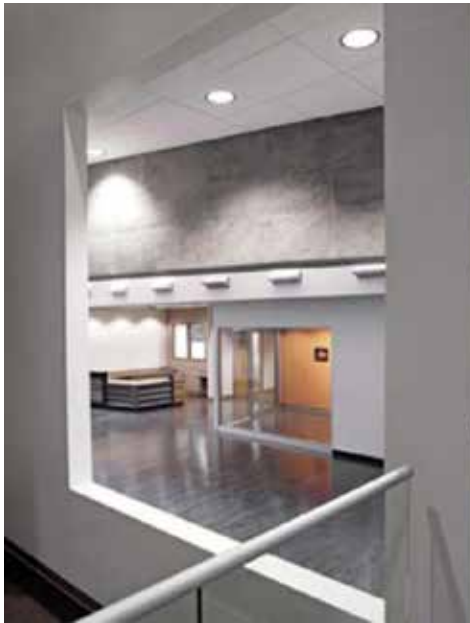
\$12 million

STATUS

Re-opened 2007



SECTION 1 | SPECIALIZED EXPERIENCE - RELEVANT PROJECTS



KNIGHT MUSEUM & SANDHILLS CENTER ADDITION / RENOVATION



The Knight Museum & Sandhills Center features five areas of local history into one innovative museum dedicated to Western Nebraska and spirit of the Sandhills region. Owned by the City of Alliance, the Knight Museum houses a broad range of genealogy research through City and county records. The story of the land is told by artifacts from the Native peoples, pioneers, and railroad workers who lived there.

Jeff Cannon served as Principal-in-Charge for the effort to renovate existing spaces and add the Sandhills Ecology Wing. The facility's new atrium is filled with natural daylight. The effect washes cast-in-place concrete walls with a texture meant to evoke that of the Nebraska settlers' sod homes.

Within the atrium, the reception area gives full view to the museum's various programmatic elements. Slotted and framed openings with the atrium walls allow visitors a controlled view into the galleries ahead. A large, glass curtain wall at one end of the museum provides panoramic views of the City park beyond.

LOCATION
Alliance, Nebraska

SCOPE
8,000 sf

PROJECT COST
\$6.5 million

STATUS
Re-opened 2007



SECTION 1 | SPECIALIZED EXPERIENCE - RELEVANT PROJECTS



CEDARHURST CENTER FOR THE ARTS

This project is the reinvention of a little-known jewel in Southern Illinois involving multiple buildings on 90 acres. Cedarhurst Center for the Arts is an art museum, sculpture park, and arts center situated on the edge of the Northern Ozarks an hour east of St. Louis. The art museum is an Edward Durell Stone design on a bucolic 90 acres.

The challenge was to restore and expand an iconic example of mid-twentieth-century architecture. The developed master plan, strengthened community linkages to the museum and generated enthusiasm for expansion of a historic building. The logical expansion would create a new wing that stands apart from the original, connected by a transparent link.

Encompassing meadows, woods, a pond and nature trail, Cedarhurst Sculpture Park encourages creative interaction between art and visitors in an informal nature setting. The open-air galleries features more than 60 large-scale sculptures.

Other prominent spaces within the building include new galleries for the permanent collection, a collection storage vault, a performing arts space and a family-oriented art education space.

Jeff Cannon served as Principal-in-Charge for this project while with a previous architectural firm.



LOCATION
Mournt Vernon, IL

PROJECT COST
\$8.75 million

SCOPE
35,000 sf facility on 90 acres

STATUS
Completed 2008



SMITHSONIAN INSTITUTION DESIGN STANDARDS

When the world's largest museum and research complex sought to create a comprehensive blueprint for its future, leaders turned to Jeff Cannon. Since 2008, the Smithsonian has trusted Cannon and his teams with collections across the nation's museum. Cannon has led multiple projects to implement new concepts and technologies, ranging from the National Museum of Natural History and the National Museum of American History to the National Zoological Park and the National Air and Space Museum.

The greatest expression of that trust centered not on a building or an exhibit, but an idea. The challenge? Write the Smithsonian's Design Standards, accounting for 19 museums that display and protect more than 138 million objects and specimens—and are visited annually by greater than 26 million guests from around the globe.

These Design Standards codified the materials, environments, systems, processes, and directives for the entire Smithsonian system. Specifically, the program featured multiple, phased tasks for the National Museum of Natural History, National Museum of American History, Freer Gallery of Art, and additional Smithsonian facilities.

Adopted in 2011, the Design Standards represent the hallmark of stewardship for the next decade and beyond. It is not enough to have a specialty in an area of collections. The critical component is knowing how to steward collections and understand their application beyond the horizon.



LOCATION

Washington, DC

SCOPE

Design Standards for the world's largest museum complex

STATUS

Standards completed and adopted 2011



PUGET SOUND NAVY MUSEUM

This museum is an urban waterfront redevelopment on a difficult, oddly shaped site defined by the intersection of Puget Sound Naval Shipyard and the City of Bremerton. Part of the program entailed renovating a 19th-century wood-framed structure. In 2005, Bremerton was in the early stages of a waterfront renaissance. The museum solution looks at the parallel growth and development of the community and the shipyard. From this symbiotic relationship emerged the maritime park, heritage museum, and memorial plaza. The narrow strip of land extends a path circling the urban center of Bremerton with pedestrian-friendly, community-focused amenities.

The Museum officially reopened in August 2007. It was renamed the Puget Sound Navy Museum and became an official U.S. Navy Museum in March 2008. Beginning with approximately 600 objects, the Museum’s collection now numbers more than 18,000. Building 50 provides the Museum with 6,049 sf of exhibition space and 4,170 sf of collections storage. Today, visitors can explore the naval history of the region and experience life as a sailor through exhibits about the Puget Sound Naval Shipyard, the USS John C. Stennis, and much more.

The Puget Sound Navy Museum collects, preserves, and interprets the naval heritage of the Pacific Northwest from 1840 to the present for the benefit of the U.S. Navy and the American people. The Puget Sound Navy Museum will ensure that the naval heritage of the Pacific Northwest and those who shaped and continue to contribute to it are never forgotten, always remain relevant, and inspire as many people as possible.

Jeff Cannon served as Principal-in-Charge for this project while with a previous architectural firm.

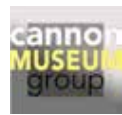


LOCATION
Bremerton, WA

PROJECT COST
\$12 million

SCOPE
10,000+ sf

STATUS
Museum Completed 2007
Park Completed 2008
Tunnel Completed 2009



NATIONAL MUSEUM OF HEALTH & MEDICINE

The National Museum of Health and Medicine (NMHM), founded as the Army Medical Museum in 1862, celebrated its 150th anniversary in 2012 with a grand opening ribbon-cutting ceremony and open house at its new location in Silver Spring, MD. Activities took place on May 21, the precise date of the founding of the Army Medical Museum. The relocation of the NMHM from the Walter Reed Medical Campus to the Forest Glen location was dictated by law (the Base Realignment And Closure Act).

“One hundred and fifty years ago, this Museum’s founders set out to study the nature of military medicine and under the most brutal of circumstances, learn what could be learned and share that knowledge with the world at large,” said Adrienne Noe, Ph.D., director of the NMHM. “That mission continues today. Our new building and the momentum of this milestone event will serve as the catalyst for increased awareness of the national medical collection. We intend to remain committed to a mission as a museum that reminds the public of the value of military medicine.”

The NMHM preserves and cares for an ever-growing collection of more than 25 million artifacts, focusing on topics as diverse as innovations in military medicine, traumatic brain injury, anatomy and pathology, military medicine during the Civil War, the assassination of Abraham Lincoln (including the bullet that killed him), human identification and a special exhibition on the Museum’s own 150th anniversary.

NMHM’s new 20,000 sf building project was led by the Baltimore District of the U.S. Army Corps of Engineers through their Fort Detrick, MD, office. As Co- Principal-in-Charge of the project while employed with a previous firm, Jeff Cannon was responsible for the master plan, program, development of the USACE RFP, collection planning, government agency interface, site selection, long-range planning for the collection, and concept design.



LOCATION
Silver Spring, MD

SCOPE
20,000 sf

PROJECT COST
\$12 million

STATUS
Completed 2012



SOUTH DAKOTA ART MUSEUM ADDITION

Little more than 20 years ago, the South Dakota Art Museum partnered with a TSP legacy firm, Group II Architects, to expand its footprint on campus and its cultural reach far beyond our state's borders. Paul Boerboom collaborated with representatives from the University, the State, and the Brookings community to develop a renovation plan for the existing-two-story Museum. The result of that shared work has become a destination for art and history lovers as well as student artists and faculty.

The project team created new galleries, offices, and work space that aligned with the Museum's vision for its future. It also was important that the addition and renovation melded with the look, feel, and function of the original building. The team retrofitted existing HVAC, lighting, electrical, and data systems as part of the work. Crews also re-roofed the original building and replaced its quarry tile facade with brick veneer to match an addition. Construction started in late May 1999 and completed in Fall of that same year.

The new wing matched the scale of the existing structure, with a new entry that gave the Museum a distinctive sense of arrival. Broad stairs and a ramp extend that welcome, affording easy access to all and framing an outdoor plaza. A logo wall behind the ramp reinforces the Museum's identity while screening the new loading dock from visitors' view.

The backlit entry canopy is an abstract interpretation of the lantern at the Campanile's pinnacle. In fact, the canopy's sloped top "gestures" to the south and the Campanile itself. Indoors, the addition provided new gallery and work areas, archive storage, freight elevator, and a gift shop so visitors could take the experience home.

The project earned a 2002 AIA South Dakota Design Award.



Campanile, framed in a Gift Shop window



LOCATION
South Dakota State University
Brookings, SD

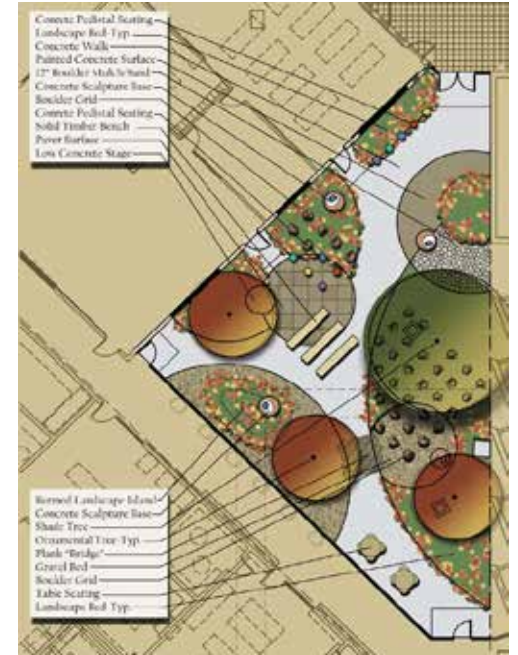
SCOPE
23,635 sf
• 5,905 sf addition
• 17,730 sf remodel

CONSTRUCTION COST
\$1,527,000

STATUS
Completed Fall 1999



SECTION 1 | SPECIALIZED EXPERIENCE - RELEVANT PROJECTS



CENTER FOR VISUAL ARTS

The Center for Visual Arts enhances and strengthens the arts for Augustana University and the region. This light-filled arts center replaced an old campus barracks with functional working, gallery, and storage spaces that allow Augustana to teach more fully and share the University's cultural treasures with the community.

Center

The built Center's main Eide/Dairymples Gallery hosts traveling exhibits as well as groupings from the University's permanent collection—including works by Picasso, Chagall, Winslow Homer, Whistler, Matisse and Roualt. The Liturgical Art Center provides art and design resources for area churches and clergy to inspire religious expression, while dedicated work space accommodates students practicing in a range of mediums. Finally, teaching and art studios for faculty artists encourage continual personal growth as artists and educators. The Center's environmental controls include systems to maintain delicate balances of ventilation, temperature, humidity, and lighting. These function to protect human inhabitants as well as the artwork's integrity.

Courtyard

Landscape Architects from Confluence created the Courtyard to maximize the space between the new arts center and the Humanities Center. Working within a defined footprint, Confluence designed the visually appealing outdoor area to lend year-round interest and work in tandem with adjacent windows. Concrete pedestals incorporated throughout the Courtyard can display art and also serve as seating. The Courtyard embraces contrast: rough rock and smooth metal, an island of plants among a pond of sea gravel. The Courtyard can be a place for individual reflection or sketching—or seat up to 50 people as a reception or performance space. The project earned an ASLA Great Plains Merit Award for Design.



LOCATION

Augustana University
Sioux Falls, SD

FACILITY SCOPE

23,750 sf

FACILITY COST

\$10.3 million

PROJECT STATUS

Facility and Courtyard
complete Summer 2006



CONFLUENCE



MIKKELSEN LIBRARY RENOVATION

Mikkelsen Library is both the information center for the Augustana University community and the campus “living room.” A major tenant’s move to a new building left much of the library’s first floor vacant. Augustana trusted TSP to lead the master planning effort that identified the best way to repurpose this key space.

University leaders wanted to create an inviting environment that supported interactive, shared knowledge. They also needed better access to key collections and media, as well as study areas and reading spaces.

TSP ultimately provided planning, architecture, interior design, engineering, and construction administration services for the large-scale renovation. The end result creatively increases interior space by relocating an interior stairway to a new “beacon” entry.

The main public space, a large open reading room, features floor-to-ceiling windows that create a bright and open spatial experience. Casual seating mixes with more formal table seating, designating different zones for study, meeting and simply hanging out. A large fireplace with comfortable arm chairs and footrests at one end of the room draws visitors to sit and relax. Recessed floor- and wall-mounted power and data outlets provide numerous spots to stay connected.

The three-story phased renovation, which included site master planning and a new front entry, also provided a new service desk, staff offices, and work area. Small- and medium-sized meeting rooms offer privacy for groups. Windows into the rooms offer both daylighting and transparency, allowing passersby to see activity within.

The library complex now consists of the original 1954 building and the 1980 addition, both designed by TSP. Our firm upgraded and reconfigured plumbing, HVAC, power, data, lighting and fire alarm to match the new floor plan.



LOCATION

Augustana University
Sioux Falls, SD

SCOPE

58,200 sf

TOTAL RENOVATION COST

\$5.4 million

STATUS

Completed 2007



CAMPUS PLANNING + DESIGN



LOCATION

South Dakota State University
Brookings, SD

CONFLUENCE

Confluence has led design and planning efforts for numerous projects on the South Dakota State University campus, creating a cohesive identity for building sites and outdoor spaces.

2025 DESIGN + MASTER PLAN

The master plan provides a unified vision for implementing the recommendations within multiple prior planning studies for the 272-acre campus while focusing on improved campus pedestrian functionality, safety, community connectivity and user experience; parking re-organization within the campus core; and thoughtful incorporation of planned facility expansions.

JACKRABBIT GREEN MASTER PLAN

This working document will guide the ongoing redevelopment of an approximately 18-acre portion of the campus. Goals included improving the quality of an existing east/west pedestrian corridor, transforming the area into a memorable outdoor space, enhancing pedestrian circulation and wayfinding, and emphasizing pedestrian access at major entrance points to campus. The plan allows for integration of future building projects and sets a standard for continuity amongst site elements within the project area. Finally, the plan developed guidelines to promote a high-quality, sustainable campus.

MCCRORY GARDENS EDUCATION + VISITOR CENTER MASTER PLAN

This master plan created a site adjacent to the Visitor Center that would be an extension of the interior space and support the program of the facility while creating a meaningful, memorable space. The plan incorporates sustainable design principles and sensitivity to the existing gardens while providing for potential future building expansion. Additional requirements of the design include pedestrian access, parking lot design, utilization of the landscape to create a buffer from adjacent retail stores, and preserving service access to the existing garden maintenance facility.

ARCHITECTURE, MATH AND ENGINEERING (AME) BUILDING

This new facility is located in the historic core of campus. When siting of the building, a strong consideration was given for the placement of the building to be thoughtfully located within the existing surroundings while enhancing pedestrian corridors and view sheds. A front plaza provides a space for outdoor gatherings, while an outdoor construction lab is concealed behind a screen wall and landscape at the rear of the building.

WICHITA ART MUSEUM RIVERVIEW ART GARDEN



*C*onfluence was retained by the Wichita Art Museum to lead a multi-disciplinary team in transforming the 8 acres of ground surrounding the existing museum into an inviting garden space for community interaction with art and the landscape.

The Riverview Art Garden project involves the integration of landscape architecture, exterior art and sculpture, architecture, site furnishings, wayfinding and lighting to create an environment to accommodate a variety of both active and passive public activities. Desired events range from concerts, parties and weddings to personal reflection or youth education.

Throughout the design process, a series of workshops were held to allow collaboration between the design team and stakeholders including the Museum Art Garden Committee, Oversight Consultant and City Staff.

LOCATION
Wichita, KS

CONFLUENCE



Section 2
RESOURCES & PERSONNEL

YOUR TEAM

The TSP Team brings together the expertise, talent, and abilities to result in a successful project—and a rewarding experience for those with whom we collaborate. We share a passion for creating educational, artistic, and community spaces that are cost-effective, enduring, and responsive to your needs.

We know that assembling the right people at the right time is crucial to your project’s success, and that highly focused expertise uplifts the end result. That’s why, when the project calls for it, we invite selected external groups to join us. Our collaborative approach fuels creativity and inspires us to develop trust-based partnerships with other leading firms whose people complement our own.

TSP’s team for the South Dakota Art Museum Addition/Renovation is experienced and accessible, with design leadership and engineering professionals from our Sioux Falls office. **Paul Boerboom** is excited to again contribute to the Museum's future, having led the architecture group that developed the previous Museum addition and renovation. Principal In Charge **Elizabeth Schulze**, Interior Designer **Karen Mutschelknaus**, and Landscape Architects **Jon Jacobson** and **Lyle Pudwill** have been deeply involved in recent campus work, including SDSU Foundation's Alumni Center and University House.

Our working relationship with our partner groups is built on a mutual respect for the strengths of each individual firm. **Cannon Museum Group** will provide strong upfront programming, planning, and facility-specific expertise. Longtime collaborators from **Confluence** will assure that landscape architecture and site designs fully align with the 2025 Campus Plan they developed for SDSU.

As your local partner, TSP will provide overall project leadership, architectural and engineering design, and a solid document delivery team. You know us, and through our decades of work on the SDSU campus, we know you, too. We will strive to bring you the highest value on this project and to seek solutions that elevate the brand of your expanded facility and the cultural experience in our state.

SOUTH DAKOTA Art MUSEUM
IN PARTNERSHIP WITH THE OFFICE OF THE STATE ENGINEER

ELIZABETH SCHULZE
PRINCIPAL IN CHARGE

RONALD MIELKE
PROJECT MANAGER

PLANNING & CONCEPT LEADS

JEFF CANNON
MUSEUM CONSULTANT

PAUL BOERBOOM
PROJECT ARCHITECT

ARCHITECTURE & INTERIORS

CHASE KRAMER
PROJECT DESIGNER

GREG SCHOER
PROJECT ARCHITECTURAL SUPPORT

JON JACOBSON
LYLE PUDWILL
LANDSCAPE ARCHITECTS

KAREN MUTSCHELKNAUS
INTERIOR DESIGNER

ENGINEERING & TECHNOLOGY

TADD HOLT
STRUCTURAL ENGINEER

ROGER NIKOLAS
MECHANICAL ENGINEER

DARRELL BREN
ELECTRICAL & TECHNOLOGY ENGINEER

Elizabeth Schulze, AIA, LEED AP BD+C

Principal In Charge | TSP, Inc.



REGISTERED: SD

AFFILIATIONS: Visual Arts Center Board of Directors,
Washington Pavilion

EDUCATION

Master of Architecture, University of Minnesota

Elizabeth brings a strong background in design and project management to your project—as well as a personal passion for the arts. She sits on the Board of Directors for the Visual Arts Center at the Washington Pavilion in Sioux Falls, SD, and has been involved with multiple enhancement projects at the cultural center.

Elizabeth has an in-depth understanding of technical, building code, and project coordination issues. As the Principal-in-Charge, Elizabeth will work with South Dakota Art Museum and the OSE to develop and monitor the overall project schedule, scope, and budget. She will participate in all major decisions and meetings, and understands that clear and consistent communication is the key to every successful project. She will be responsible for dedicating our best staff to this project at the most appropriate time throughout the life of the project, ensuring exceptional service. Elizabeth is a passionate LEED Accredited Professional who synthesizes sustainable building technologies into all aspects of project design including materials and systems specifications.

SELECTED RELEVANT EXPERIENCE

- South Dakota State University Foundation Alumni Center & University House, Brookings, SD—Signature, statement entry point for campus visitors and student interaction along the redesigned Alumni Green. Includes conference space, SDSU Foundation offices and event venues, and the University president's new home.
- South Dakota State University Wecota Annex, Brookings, SD—Visioning, planning and programming for the renovation and reuse of this annex building on campus for use by the Counseling and Human Development Departments
- Visual Arts Center, Washington Pavilion, Sioux Falls, SD—Multiple renovation projects to enhance the visitor experience through renovations of the main entrance, gift shop, and Children's Studio for visual and performing arts.
- Dakota State University Beacom Institute of Technology, Madison, SD - A signature 45,000 sf highly specialized facility on the campus of Dakota State University. The new facility will house highly advance computer labs and security systems.
- University of South Dakota Pardee Lab Master Plan & Renovation, Vermillion, SD—Restoration of 15,000 sf lab building to be completed in multiple phases.

“Our relationship with TSP spans many years. Several buildings on this campus were designed, engineered, and constructed with the able assistance of TSP professionals. TSP has continued to be a valued professional partner with us in recent projects. We have used their services to lead projects, they have worked in collaboration with other professional firms, and we have sought their counsel for specific campus matters, all with valued outcomes and pleasant working relationships.”

— Robert Oliver, President, Augustana University —

Jeffrey Cannon

Museum Consultant | President, Cannon Museum Group



AFFILIATIONS

American Alliance of Museums
Mid Atlantic Association of Museums
International Council of Museums
International Association of Museum Facility Administrators
Association of Tribal Archives Libraries & Museums

EDUCATION

Master of Art, Museum Studies, University of Nebraska
Master of Architecture, University of Nebraska

Jeff has more than 25 years of experience in planning, programming and designing museums, galleries, arts center, memorials, and other cultural facilities in the United States

and Middle East. He has been involved with more than 100 culture sector projects. After earning masters' degrees in architecture and museum studies, he focused his career on cultural and heritage development with an emphasis on sustainability, design, client involvement and responsible capital resource allocation. Jeff has led multiple museum projects designed for the military, universities, government agencies and tourism development groups. He is an active member of several museum associations and heritage groups, and a frequent speaker on issues facing museums.

Through this work, Jeff has gained tremendous respect for the complexities of these unique and highly customized building types, as well as for the expertise required to effectively manage the details of cost and construction. Whether he's preserving a historic facility or developing a ground-up museum, Jeff takes great care to understand the vision of the Owner and designer.

SELECTED RELEVANT EXPERIENCE

- National Museum of Health and Medicine Relocation and Strategic Plan, Fort Detrick, MD—Planning, programming, and development of curatorial and collections holding environments for more than 12 million artifacts in the collection of this museum, in existence since the Civil War.
- Smithsonian Institution, Washington, DC—Numerous projects, including Design Standards for the Smithsonian Institution, system-wide across its 19 museums; and significant renovations to individual facilities such as the National Museum of Natural History, National Museum of American History, and the National Air & Space Museum.
- National Gallery of Art, Washington, DC—Master Facilities Plan.
- Cedarhurst Center for the Arts, Mount Vernon, IL—Restoration and expansion of an iconic museum, including mast planning, community planning, architecture, design, and planning for a 90-acre sculpture park.
- Iowa State University Christian Petersen Art Museum & Morrill Hall Renovation, Ames, IA—Site Master Plan for the restoration and renovation of an historic campus building as a showplace for the arts, including textiles conservation and LEED certification.
- Combined Curatorial Center, Abu Dhabi, UAE—Design for a new, 400,000 sf collections holding, preservation, conservation, and research facility supporting the new Cultural District on Saadiyat Island.
- Omaha Children's Museum, Omaha, NE—\$12 million renovation of this destination for children and families, where Cannon also served as a member of the Board of Directors.

“The truth is, a place is more than half memory.
No place is a place until things have happened in it are remembered.”

— Wallace Stegner, Pulitzer Prize-winning American Author —

Ronald Mielke, PE, LEED AP

Project Manager | TSP, Inc.

REGISTRATION Professional Engineer: SD, IA, NE

EDUCATION Bachelor of Science, Mechanical Engineering,
South Dakota State University



Ron brings an extensive background in leadership, management, and financial aspects of facility projects. His guidance affords you the comfort of knowing your projects will be delivered on time and within budget. As Project Manager, Ron will be intimately involved in all phases of development and construction. He is responsible for streamlined project management including day-to-day communication, leading the project team, and coordinating, managing, and defining tasks and timelines. It is his charge to balance

your project with its budget, working with the technical team to discover cost sensitive solutions addressing your challenges. Ron is a Principal and former CEO of TSP.

SELECTED RELEVANT EXPERIENCE

- Department of Veterans Affairs Michael J. Fitzmaurice State Veterans Home, Hot Springs, SD
- South Dakota Army National Guard—numerous projects, including Readiness Center facilities in Watertown and Mobridge; Armories in Sioux Falls, Flandreau, Milbank, and Parkston; and Camp Rapid Classroom/Barracks Building 802 in Rapid City
- St. Michael Catholic Church Chapel Addition, Sioux Falls, SD

Paul Boerboom, AIA

Project Architect | TSP, Inc.

REGISTRATION Registered Architect: SD, IA, MN, NE, ND

EDUCATION Bachelor of Architecture, University of Minnesota
Bachelor of Environmental Design, University of Minnesota



As a project architect, Paul puts his imagination to work to interpret your facility dreams and philosophies. He translates them into a brick and mortar design. Paul approaches each design project with a fresh outlook. He has the unique ability to listen and turn people's ideas into tangible structures. Paul is a skilled illustrator with the ability to communicate design ideas with compelling architectural artwork. His goal is to design an attractive distinctive facility that meets not only the aesthetic but also the functional

needs of the client within an established budget and schedule. Paul's original works earned two, first-place awards in the 2015 South Dakota MasterWorks competition.

SELECTED RELEVANT EXPERIENCE

- South Dakota State University, Brookings, SD
 - » South Dakota Art Museum Expansion
 - » SDSU Foundation Alumni Center & University House
 - » Dairy Microbiology Addition/Renovation
 - » SDSU Foundation Social Science Center
- Augustana University, Sioux Falls, SD
 - » Center for Visual Arts
 - » Froiland Science Complex & Gilbert Science Center Renovation
 - » Mikkelsen Library Remodel
- Southeast Tech Campus Development Plan, New Laboratory Facility, & Industry & Trades Building Addition/Remodel, Sioux Falls, SD
- St. Michael Catholic Church, Sioux Falls, SD—multiple projects, including a Chapel Addition and Sanctuary Remodel
- Sioux Falls School District Eugene Field A+ (Arts Plus Academics) Elementary School Addition, Sioux Falls, SD

Chase Kramer, AIA, LEED GA

Project Designer | TSP, Inc.

REGISTRATION	Registered Architect: SD, IA
EDUCATION	Master of Architecture, Iowa State University Bachelor of Arts, Augustana University



Chase brings varied commercial and institutional project experience for all phases of architectural practice including master planning, programming, design, construction documents, and construction administration. As a LEED Green Associate, Chase applies knowledge and expertise in sustainability to every project, not just those looking to achieve LEED accreditation. At TSP, he collaborates with all disciplines to ensure projects are completed with an acute attention to detail. Chase's portfolio experience includes civic and education projects

as well as recreational, office, multi-family, and industrial designs. He is active in the arts and performs in community theater and choir ensembles.

SELECTED RELEVANT EXPERIENCE

- Southeast Tech New Laboratory Facility and Industry & Trades Addition/ Renovation, Sioux Falls, South Dakota
- Augustana University, Sioux Falls, SD
 - » Froiland Science Complex & Gilbert Science Center Renovation
 - » Athletics Conceptual Planning
- Dakota State University Beacom Institute of Technology, Madison, SD
- Department of Veterans Affairs Michael J. Fitzmaurice State Veterans Home, Hot Springs, SD
- Midco Aquatic Center, Sioux Falls, SD
- Holy Spirit Catholic Church Interior Renovation, Sioux Falls, SD
- Our Lady of Guadalupe Catholic Church Accessibility Renovations, Sioux Falls, SD
- St. Michael Catholic Church Sanctuary Remodel, Sioux Falls, SD
- Rawlins Library Expansion, Pierre, SD

Greg Schoer

Project Architectural Support | TSP, Inc.

EDUCATION	Master of Architecture, Southern California Institute of Architecture Bachelor of Arts, Art History & Studio Arts, Augsburg College
-----------	--



An architectural designer who strongly values client relationships, Greg applies his connection to the community to all of his projects to create visually pleasing and long-lasting architectural design solutions. Greg works to create energizing environments that will support discovery and are a source of pride for the campus as well as for the larger community.

SELECTED RELEVANT EXPERIENCE

- South Dakota State University, Brookings, SD
 - » Alumni Center & University House
 - » Wecota Annex Renovation Planning & Concepts, Brookings, SD
- Midco Aquatic Center, Sioux Falls, SD
- Department of Veterans Affairs Michael J. Fitzmaurice State Veterans Home, Hot Springs, SD

Jon Jacobson, ASLA, PLA

Landscape Architect | Confluence

REGISTRATION Licensed Landscape Architect: SD

EDUCATION Bachelor of Landscape Architecture,
Iowa State University



Jon has led the Sioux Falls office of Confluence since its inception and came to Confluence from a true multi-disciplinary environment, working side-by-side with architects and engineers for nearly a decade. Jon is adept at communicating with a wide range of design professionals as well as his clients. Above all, he values open and candid client relationships. Jon's experience gives him rare insight into the practice of Midwest landscape architecture. His passion for the work lies in civic work. He carries specific expertise in park planning and urban design.

SELECTED RELEVANT EXPERIENCE

- South Dakota State University, Brookings, SD
 - » SDSU Foundation Alumni Green, Alumni Center & University House
 - » 2025 Design and Campus Master Plan
 - » Jackrabbit Green Master Plan
 - » Architecture, Math, & Engineering (AME) Building
 - » Outdoor Learning Laboratory at the Fishback Center for Early Childhood Education
- Children's Museum of South Dakota, Brookings, SD
- Augustana University Elmen Center Expansion, Sioux Falls, SD
- City of Sioux Falls, SD—numerous projects, including
 - » Veterans' Park Master Plan Phases I-IV & Other Improvements
 - » McKennan Park Master Plan Phases I-II
 - » Memorial Park Master Plan Phases I-III
 - » Upper Terrace Park Master Plan
 - » Downtown River Greenway Master Plan & Implementation
 - » Mary Jo Wegner Aboretum Master Plan & Implementation

Lyle Pudwill, ASLA, PLA

Landscape Architect | Confluence

REGISTRATION Licensed Landscape Architect: SD

EDUCATION Bachelor of Landscape Design,
South Dakota State University



A native of northern South Dakota, Lyle has been with the Confluence design team since the doors opened in Sioux Falls, in 2005. Lyle enjoys the challenge of developing memorable landscapes that reflect a client's vision, are sustainable and lasting, and simply "feel good." With more than 10 years of experience on a diverse blend of project types, Lyle strives to lead a design process that is collaborative, innovative, and maybe a little fun!

SELECTED RELEVANT EXPERIENCE

- South Dakota State University, Brookings, SD
 - » SDSU Foundation Alumni Center & University House
 - » 2025 Design & Campus Master Plan
 - » Jackrabbit Green Master Plan
 - » Architecture, Math, & Engineering (AME) Building
 - » Outdoor Learning Laboratory at the Fishback Center for Early Childhood Education
 - » McCrory Garden Education + Visitor Center
 - » Jackrabbit Village Housing Complex
 - » Hobo Day Plaza
- Children's Museum of South Dakota, Brookings, SD
- Augustana University, Sioux Falls, SD
 - » Center for Visual Arts Courtyard
 - » Elmen Center Expansion
- University of South Dakota Research Park Phase I Implementation, Sioux Falls, SD

Tadd Holt, PE

Structural Engineer | TSP, Inc.

REGISTRATION Professional Engineer: SD, MN, IA, NE

EDUCATION Master of Science, Civil Engineering,
South Dakota State University



Tadd’s responsibilities include structural design, specification, and project inspections. With a background in projects from educational to healthcare and commercial facilities, he draws upon a broad range of experiences. Tadd’s deep sense of personal accountability is rooted in lessons learned not only during his professional engineering career, but through his years of service in the U.S. Army Reserve.

SELECTED RELEVANT EXPERIENCE

- South Dakota State University Alumni Center & University House, Brookings, SD
- Augustana University Froiland Science Complex & Gilbert Science Center Renovation, Sioux Falls, South Dakota
- South Dakota School of Mines & Technology Student Wellness & Recreation Center, Rapid City, SD

Roger Nikolas, PE, LEED AP

Mechanical Engineer | TSP, Inc.

REGISTRATION Professional Engineer: SD, MN, IA, NE, ND

EDUCATION Bachelor of Science, Mechanical Engineering,
University of Minnesota



Roger designs systems that contribute to long-term efficiency and seamless building operations. He evaluates existing system attributes and identifies potential improvements that translate to maintenance and energy savings. His designs consider climate control, humidity, energy conservation, indoor air quality, energy management systems, contaminant restriction, mechanical system commissioning, and phased integration to occupied facilities. Roger will work in concert with Museum Consultant Jeff Cannon

to create systems that maintain a carefully balanced environment within the Museum’s gallery spaces, conservation and work rooms, and archival storage components.

SELECTED RELEVANT EXPERIENCE

- South Dakota School of Mines & Technology Chemical and Biological Engineering +Chemistry Building, Rapid City, SD
- Augustana University, Sioux Falls, SD
 - » Froiland Science Complex & Gilbert Science Center Renovation
 - » Humanities Center HVAC
- South Dakota State University, Brookings, SD
 - » SDSU Foundation Alumni Center & University House
 - » Dairy Microbiology Building Addition/Remodel
- University of South Dakota Pardee Lab Master Plan & Renovation, Vermillion, SD
- Dakota State University Beacom Institute of Technology, Madison, SD
- Southeast Tech Campus Development Plan, New Laboratory Facility, & Industry & Trades Building Addition/Remodel, Sioux Falls, SD

Darrell Bren, PE, RCDD, LEED AP

Electrical & Technology Engineer | TSP, Inc.

REGISTRATION Professional Engineer: IA, MN, ND, NE, SD

EDUCATION Bachelor of Science, Electrical Engineering,
South Dakota State University



Campus electrical designs require specialized skills to address flexibility, energy-efficient building systems and quality lighting. Darrell contributes seasoned design knowledge to every higher education project. As a Registered Communication Distribution Designer, he is skilled in developing information transport systems and their related infrastructure. While working with the Owner and design team, Darrell will match electrical systems to your project goals for power, IT, and life safety needs. Darrell will collaborate closely

with Museum Consultant Jeff Cannon to ensure that artworks are illuminated properly without causing undue wear or overexposure to the pieces.

SELECTED RELEVANT EXPERIENCE

- South Dakota School of Mines & Technology Chemical and Biological Engineering +Chemistry Building, Rapid City, SD
- Augustana University Froiland Science Complex & Gilbert Science Center Renovation, Sioux Falls, SD
- South Dakota State University Foundation Alumni Center & University House, Brookings, SD
- University of South Dakota Pardee Lab Master Plan & Renovation, Vermillion, SD
- Dakota State University, Madison, SD
 - » Beacom Institute of Technology
 - » Infrastructure Upgrades
- Southeast Tech Campus Development Plan, New Laboratory Facility, & Industry & Trades Building Addition/Remodel, Sioux Falls, SD

Karen Mutschelknaus, CID

Interior Designer | TSP, Inc.

CERTIFICATION Certified Interior Designer: SD

EDUCATION Bachelor of Family & Consumer Science,
South Dakota State University



Karen develops economical and aesthetically thoughtful spaces that blend ease of maintenance, longevity, and flexibility with design impression. She is talented in open-space planning, color scheme development, and finish selection. She understands how to design efficient, flexible education spaces using a variety of furniture and fixtures. She provides expertise in FF&E research, design, bidding, ordering, and installation coordination. Karen has been an integral part of the design team for several recent projects on the

South Dakota State University campus and looks forward to helping create a work of art to house some of our state's most celebrated cultural treasures.

SELECTED RELEVANT EXPERIENCE

- South Dakota State University, Brookings, SD
 - » SDSU Foundation Alumni Center & University House, Brookings, SD
 - » Dairy Microbiology Addition/Renovation
 - » Mathews and Pierson Halls Remodel
- Augustana University, Sioux Falls, SD
 - » Froiland Science Complex & Gilbert Science Center Renovation
 - » Mikkelsen Library Remodel
 - » Morrison Commons Huddle Renovation
- South Dakota School of Mines & Technology Chemical & Biological Engineering +Chemistry Building, Rapid City, SD
- Department of Veterans Affairs Michael J. Fitzmaurice State Veterans Home, Hot Springs, SD
- University of South Dakota Pardee Laboratory Renovation, Vermillion, SD
- Sioux Falls School District Eugene Field A+ (Arts Plus Academics) Elementary School Addition, Sioux Falls, SD

This page intentionally left blank



Section 3
PROJECT APPROACH

CHALLENGES & LESSONS LEARNED

With more than 7,000 objects of art and a Harvey Dunn collection of more than 100 works, the Museum faces some challenges as we develop your vision for its continued growth and development:

Access. Space for curations staff to show selected artwork to a small group or arrange for faculty or other authorized guests to view archived items.

Gallery Flow. Movement of people through the galleries during a typical viewing day, as well as security concerns that arise when visitors are in gallery spaces during installations or gallery changes.

Space Needs. Study space, library space, and a secondary multi-purpose room will fill important roles but must be balanced against gallery areas.

Building Performance. Condensation of glass at entries, spalling of concrete on the stairs, and a temperamental mechanical system decrease overall performance, while adjacency issues exist with the position of the merchandise and shipping/mail room.

There's no teacher quite like experience. TSP puts our 85 years of lessons learned to work for you. So does Cannon Museum Group, who brings two decades of focused cultural experience to this South Dakota Art Museum project. We offer a selection of vignettes from our collective expertise to illustrate how we've found creative design solutions for other arts and cultural clients.

NATIONAL MUSIC MUSEUM

Working to find more space within the same footprint at a specialized museum in Vermillion, SD, Senior Architect Paul Boerboom reorganized lower-level storage and office spaces. At the time, the museum did not have the funds to expand to adjacent buildings on the University of South Dakota campus. Boerboom and project engineers factored in humidity, temperature, and other considerations to develop functional, budget-conscious solutions for this museum and its highly specialized collection of musical instruments.

NATIONAL MUSEUM OF THE U.S. ARMY & MUSEUM SUPPORT CENTER

Museum Consultant Jeff Cannon was the Co-Principal and Primary Programmer for planning, programming, and development of curatorial and collections holding environment for more than 200,000 objects. The design team won a competitive contract with team lead Manhattan Construction for the design of a prestigious 125,000 sf collections holding, preservation, conservation, and research facility supporting the new National Museum of the United States Army, at Fort Belvoir, VA. The project kept an accelerated schedule to be completed in 2010 for the move of the collections to be near the new national museum.

Cannon Museum Group understands that providing counsel on management and growth of collections goes beyond knowing where or who has a painting or artifact. Management also includes knowing how the systems work for collections, and then determining the most qualified staffing for the needs of the collection. Even for museum professionals, the planning process for collections can disclose gaps in the type of staff needed. Cannon Museum Group's planning for the Army's new museum revealed the need for a new staff matrix. He led the team that discovered the needs (and created and designed the facility along the way).

COMBINED CURATORIAL CENTER (LOUVRE, GUGGENHEIM, SHK ZAYED MUSEUM)

Museum Consultant Jeff Cannon is the Principal in Charge for the design of a 400,000 sf collections holding, preservation, conservation, and research facility supporting the new Cultural District on Saadiyat Island—within Abu Dhabi, UAE. The museum collections center will hold objects of significant cultural value related to art, sculpture, cultural development and history. The collections are to be possessed by the UAE though related to the specific missions of the museums.

PECHANGA CULTURAL CENTER & SOUTHWEST MUSEUM

Museum Consultant Jeff Cannon was Principal in Charge for the design of the cultural center that stands as a testament to the Pechanga Tribe's historical resiliency and unwavering dedication to honor its heritage. The central mission of the center in Temecula, CA, is to raise awareness and appreciation for the history and cultural traditions of this people, through educational programs and exhibits. The Cultural Center acts as repository for the Tribe's cultural heritage through the preservation of oral histories, archival materials and objects of cultural, historical and artistic significance to the Pechanga people.

NATIONAL MUSEUM OF THE U.S. ARMY RESERVE

Museum Consultant Jeff Cannon served as Principal in Charge for planning, programming, and development of curatorial and collections holding environment for more than 3,000 objects in history-rich Gettysburg, PA. The US Army Center for Military History (CMH) requested from the U.S. Army Corps of Engineers that the design firm become engaged in the development of a new museum for the U.S. Army system of museums. The new museum would tell the unique story of the Citizen Soldier. The CMH chose an existing Army Reserve depot in the heart of Gettysburg as the preferred location. The design firm was tasked with verifying the feasibility of the location, creating a program, designing a concept, and issuing recommendations for command to act upon.

CEDARHURST CENTER FOR THE ARTS & SCULPTURE PARK

One of Museum Consultant Jeff Cannon's most challenging assignments was creating a new vision of the interpretation of sculpture. The Cedarhurst Center for the Arts and its Sculpture Park is situated on 90 acres just at the edge of the Northern Ozarks—about an hour east of St. Louis, IL. Jeff Cannon assembled an imaginative team to explore the concepts of outdoor settings and how the visual field of an object is related to its interpretation by the viewer. One of our team's artists looked to the site's body of water as an inspiration for the beginning of the art walk. Called The Source, it related the flow of water as a departure point for considering sculpture.

MITCHELL PREHISTORIC INDIAN VILLAGE & BOEHNEN MUSEUM

Senior Architect Paul Boerboom and his team devised an architectural feat to protect and showcase an active archeological site in Mitchell, SD. Structural and Mechanical Engineering played key roles in this unique project, which put fieldwork on display in a secure, climate-controlled building with no floor. The team worked together with archeology and anthropology experts to develop a design that echoed the lodges of the ancient Native civilizations who once called the site home. The team's design minimized disturbance of the site itself during the construction phase—showing reverence for those who made their lives there.

VISUAL ARTS CENTER, WASHINGTON PAVILION

Principal in Charge Elizabeth Schulze also serves as an enthusiastic Board of Directors member for the Visual Arts Center (VAC) at the Washington Pavilion, in Sioux Falls, SD. Schulze has loaned her talents to two VAC projects to date. The museum is housed within a former high school, along with a science museum and several theaters for the performing arts. Unfortunately, the original renovation made visitors hunt for the entrance to the galleries and creative arts spaces of the VAC. Schulze worked with VAC executive staff, docents, and gift shop workers to create a sense of arrival, enhance flow and access, and elevate the VAC's profile as part of the Washington Pavilion of Arts & Sciences. Schulze also led the re-design of the VAC Children's Studio. There, toddlers through school-age artists learn and experiment to express themselves through visual arts, music, and theater.

SANFORD HOMESTAKE VISITORS CENTER, LONG-BASELINE NEUTRINO FACILITY

It's hard to imagine a more specialized environment than the Long-Baseline Neutrino Facility, an underground research lab at the former Homestake Mine in Lead, SD. The TSP Team provided a complement of engineering services to ensure that HVAC, lighting, vertical transport, air exchange, life safety, security, and plumbing systems performed to high expectations.

COMPREHENSIVE SERVICES

Together, TSP, Cannon Museum Group, and Confluence offer a complementary set of design, engineering, planning, and specialty services professionals who devote themselves to your success. Our experts work in concert to help you create an overarching plan and develop design concepts that get the most out of your square footage and what you can do within it. Based on your project requirements, we can provide—

- Existing Facility Analysis
- Feasibility Studies
- Facility Master Planning
- Museum Design and Development Management
- Interpretive Storylines and Exhibit Content Development
- Space and Adjacencies Programming
- Mechanical Engineering
- Electrical Engineering
- Structural Engineering
- Civil Engineering
- Technology Design
- Interior Design
- FF&E Planning and Coordination
- People, Place, and Performance Management for Museums and Cultural Institutions
- Full Architectural Services
- Site Planning & Design
- Landscape Architecture
- Sustainable Design and LEED Certification
- Construction Administration
- Warranty Inspections

A COLLABORATIVE EXPERIENCE

We emphasize value in each of the services we offer. Through TSP's deep understanding of SDSU's expectations and facilities, Cannon Museum Group's knowledge of cultural organizations and operations, and Confluence's ongoing work toward a cohesive identity for your campus, we're able to effectively serve as trusted advisors to the entire project team.

EARLY VALUE, LASTING BENEFIT

Cannon Museum Group's early engagement means that designs for the South Dakota Art Museum project will benefit from museum management expertise even in the initial concept stage. When commitments to the project's budget, scope, and schedule are first being developed, those insights can help prevent

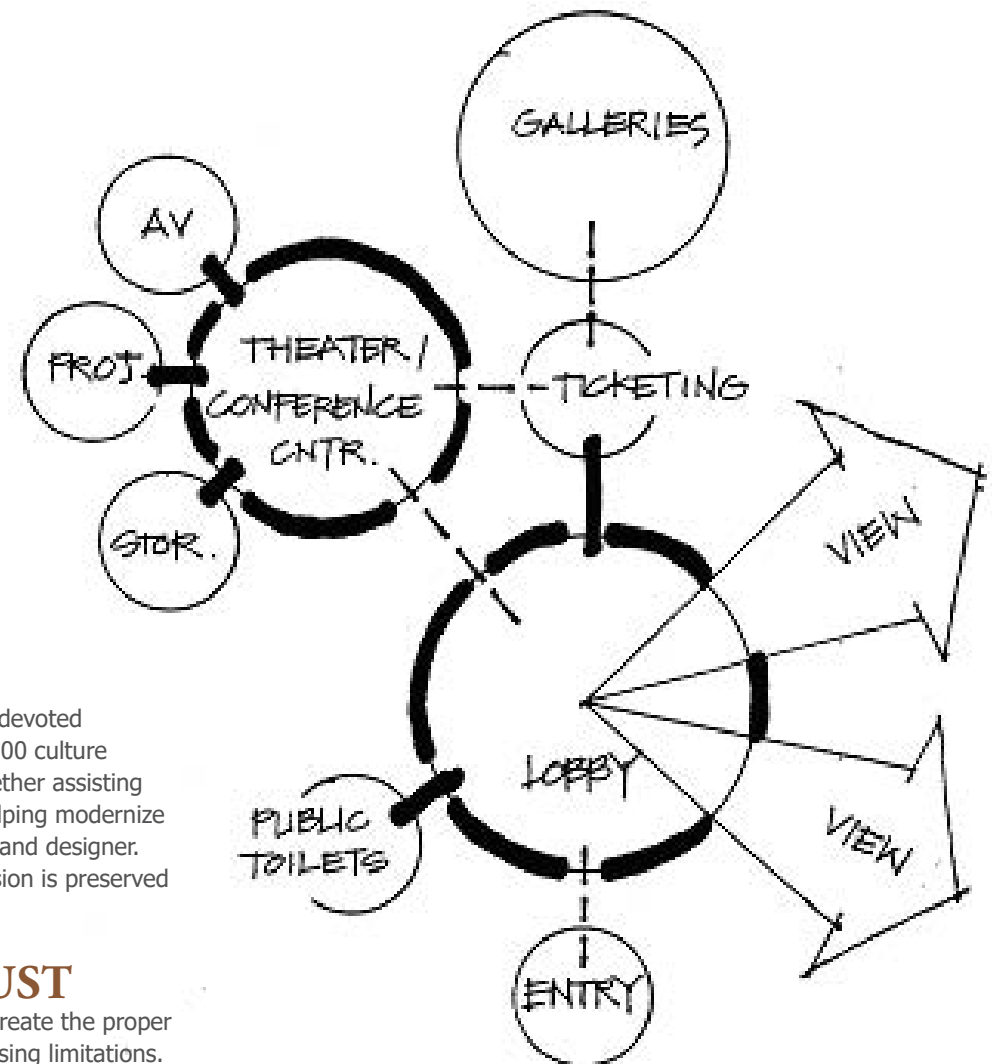
costly changes and adjustments in later design and construction phases.

From planning through project close-out, we are dedicated to our work as your devoted advocates. Museum Consultant Jeff Cannon has been involved with more than 100 culture sector projects representing approximately \$5 billion in development value. Whether assisting in the preservation of a historic theater, developing a ground-up museum, or helping modernize a cultural arts center, we take great care to understand the vision of the Owner and designer. Our entire design team will work with all stakeholders to ensure the project's vision is preserved through all stages of design.

TIMELY INFORMATION YOU CAN TRUST

As architects, engineers, and planners, we are problem-solvers to our core. To create the proper design solution, our project plan must allow room for understanding and addressing limitations. We'll provide you with the creative visual, interactive tools to help you weigh options and make informed decisions. No matter the issue, our team's experience and lessons learned will enable us to sort out the perceived constraints from the real ones—and then reframe them instead as design opportunities.

Plus, you'll have cost-to-value information throughout the process, so you can confidently make decisions at key trigger points. In TSP's successful experience with different project-delivery models, one thing remains consistent: The 11th-hour quick fix is no fix at all.



Lobby Adjacencies Diagram, USS New Jersey Memorial Museum, Camden, NJ

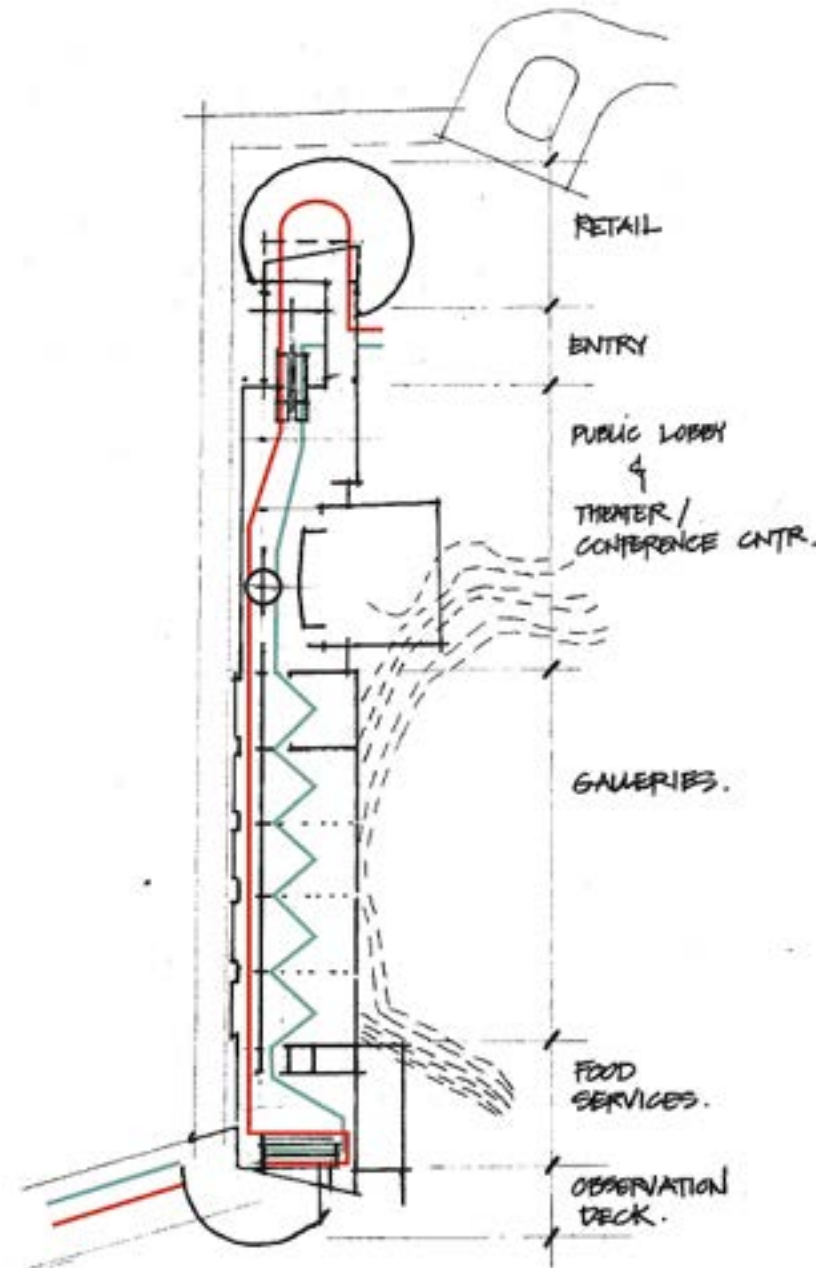
MAXIMIZING YOUR INVESTMENT

The challenge is to balance your initial investments and long-term costs of operations and maintenance—while matching your future facility to your program needs. We find that successfully meeting budgets and schedule hinges on a few simple concepts and practices:

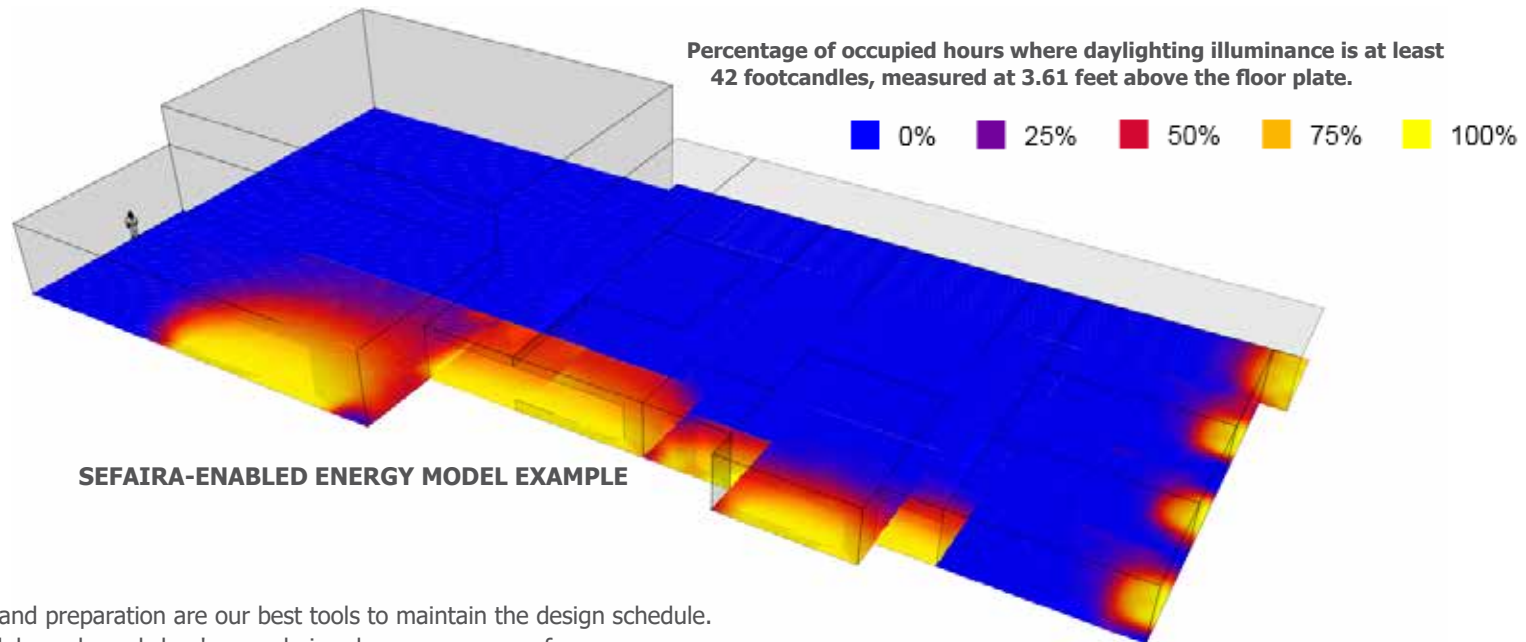
- Communicating clearly, early, and often
- Ensuring you have the information you need to make educated, timely decisions
- Initiating consistent, proactive dialogue about scope, budget, and schedule, as opposed to passively waiting for information and documents to be exchanged
- Using multiple cost control resources
- Translating early schematic concepts and limited design development documents into realistic cost projections that limit backtracking during the design process
- Conducting Value Engineering reviews that center on frank communication, study of design options, constant checks of scope and budget, analysis of space usage and building systems, and evaluation of durability and maintenance
- Finding maximum value within established parameters while carefully considering initial cost, value analysis, life-cycle cost, and end-user satisfaction.

BUDGETING & COST CONTROLS

The TSP Team understands and appreciates the value that an on-schedule finish brings to a successful project. We're with you—literally, and in person—every step of the way, from our first visioning session to the student and community open house. We look for ways to reduce those day-to-day expenses, so you can direct as many dollars as possible into programming. Throughout planning and design phases, we carefully consider construction costs and operational expenses alike.



Circulation Diagram, USS New Jersey Memorial Museum, Camden, NJ



Planning and preparation are our best tools to maintain the design schedule. We schedule each workshop's agenda in advance so we can focus on outcomes. It's our job to anticipate your needs and bring relevant, decision-critical information and recommendations to the table so we can keep moving.

We place heavy emphasis on our responsibility for cost and schedule controls. Our goal is to help ensure that you will not be surprised about the costs of associated with your project. We'll provide you the most comprehensive and accurate cost information at any given point throughout your project's development—and help you assess implications of potential design solutions during the design process. This reduces surprises and ensures that you understand how these decisions affect the overall project, while there is still time to change direction.

'GREEN' DESIGN

"Green" design is more than a buzzword to make the public feel good about the dollars spent. Done right, sustainability planning saves you time and money, both initially and in the future. The TSP Team is committed to practical, sustainable solutions. More than one-quarter of TSP's in-house staff are LEED-Accredited professionals. Even if LEED certification is not desired, using a "sustainability workbook" tool can help us evaluate a variety of impacts that contribute valuable information for any operations budget.

ENERGY MODELING

Our team members keep up-to-date on promising technology that improves performance of active (mechanical) building systems, as well as passive (materials and placement) systems that affect everything from natural air flow to daylighting. One of the newest programs in our toolkit, Sefaira, integrates with our existing Building Information Modeling (BIM) software to create real-time energy analysis even as we create concepts. We can compare the tradeoffs for each option, with dynamic charts that measure energy footprint, monthly energy use, air flow rate, heat gain, daylighting potential, and other key indicators.

OPERATIONS & MAINTENANCE

TSP's review and analysis of building codes can dramatically impact building systems design and construction costs. Fire walls, rated doors and frames, fire/smoke dampers, and egress systems are costly maintenance items. TSP's engineers consider dust management control opportunities to increase efficiency of HVAC systems. We'll work in concert with our Museum Consultant to design climate control solutions that create comfortable environments and protect your valuable collections.

ASSURING QUALITY IN YOUR NEW ENVIRONMENT

Building Information Modeling (BIM) is changing how buildings are designed. TSP has embraced BIM not only as a means to achieving the design's end, but to re-approach how we apply technology in the architect/engineer/client relationship.

In fact, TSP established our own, internal BIM team whose members provide quality reviews and company-wide training. Together, our team's BIM experts can help determine if this powerful tool might benefit your project and design process.

BIM ADVANTAGES SAVE TIME & MONEY

Improved collaboration. Common, shared 3-D models ensure each member of the design team has the same set of information. Transparency cultivates collaborative working relationships and keeps the entire team focused on achieving the best value for the life of your project.

Greater predictability. Early project visualization helps you gain a clear understanding of design intent or quickly view how modifications will impact the overall look. BIM enables us to "build" the project in a virtual environment, rehearsing complex components before construction starts.

Heightened productivity. BIM's powerful capabilities help reduce expensive, late-stage design changes, confirm design integrity and estimated quantities, produce fabrication and construction drawings, and coordinate construction equipment.

Reduced rework. BIM's 3-D modeling integrates multidisciplinary design inputs in a single product. Identifying and resolving any interface issues in advance of construction will limit redesign's impacts on cost and schedule. BIM models seamlessly incorporate your new and existing assets into a cohesive view that gives a sneak peek into the future.

BIM software such as Revit® is part of TSP's standard toolkit for all design projects.



Revit Modeling, SDSU Foundation Alumni Center, Brookings, SD
(See Page 49 for a photo-realistic rendering of this same space)

RECORD OF PAST PERFORMANCE

Note: Significant museum projects often are influenced by capital changes that result from fundraising outcomes. These changes can reflect wide variances between estimates and final costs, due to Owner-initiated changes in a project's scope.

Project Name	Project Scope	Final Design Estimate*	Final Contracted Amount*	Variance*	Final Construction Cost**
Iowa State University Christian Petersen Art Museum/Morrill Hall Renovation	27,000 sf	\$9,600,000			\$12,000,000
Knight Museum Renovation & Sandhills Center Addition	8,000 sf	\$6,500,000			\$6,500,000
Cedarhurst Center for the Arts Center Expansion/Renovation & Cedarhurst Sculpture Park	35,000 sf (facilities) 90 acres (sculpture park)	\$7,500,000			\$8,750,000
Puget Sound Naval Museum New facility, collections storage, shipyards exhibits	10,000+ sf	\$6,500,000			\$12,000,000 [^]
National Museum of Health & Medicine New facility, exhibitions	20,000 sf	\$8,500,000			\$12,500,000 ^{^^}
South Dakota School of Mines & Technology Chemical & Biological Engineering + Chemistry Building	50,000 sf	\$14,958,000	\$14,720,496	-1.58%	\$14,716,826
Augustana University Froiland Science Complex & Gilbert Center Renovation	37,500 sf new 84,000 sf remodel	\$26,000,000	\$26,000,000	0.00%	---***
South Dakota School of Mines & Technology Student Wellness & Recreation Center Addition/Renovation	19,500 sf new 18,200 sf remodel	\$8,896,525	\$7,143,500	-19.70%	\$7,448,693

*Includes alternates accepted by Owner **Includes change orders and Owner-initiated scope changes ***Under Construction
[^]Includes significant, Owner-initiated scope changes of park and tunnel ^{^^}Includes Army Corps of Engineers' scope changes/enhancements

This page intentionally left blank



Section 4
PROJECT LOCALE

Outdoor Learning Laboratory at SDSU's Fishback Center for Early Childhood Education, Brookings, SD

PROJECT LOCALE

AVAILABILITY TO PROJECT LOCALE

The TSP Team's project leadership, engineering specialists, and core architecture group all are an hour's drive—or less—from South Dakota State University.

We're there when you need us, and even when you don't. Our landscape architecture consultant has proved dedication to the Brookings area through previous work on the University campus and in the larger community.

We live, work, and play in the same back yard. **We're neighbors, and we'll treat you like one.**

FAMILIARITY WITH PROJECT LOCALE

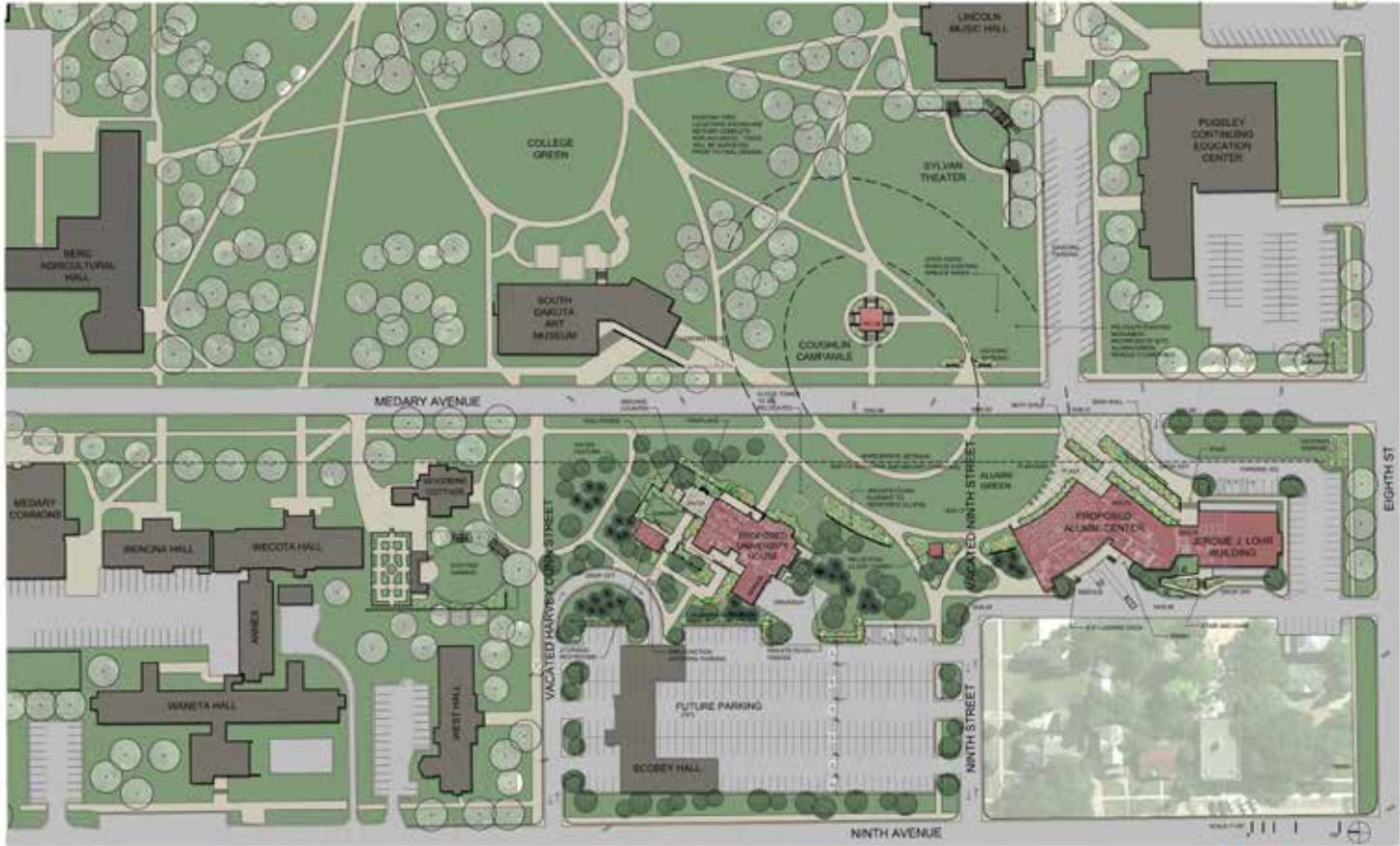
We've gained a great perspective and feel for SDSU's culture and building standards during our numerous campus visits, spanning the past six decades—and counting.

Through TSP's past and ongoing project work, we've been privileged to help give shape to several iconic campus touchpoints: The Rotunda, Frost Arena, Briggs Library—and the emerging Alumni Center and University House at the Alumni Green, in partnership with team members from Confluence.

Our team's familiarity with SDSU includes an excellent understanding of the existing campus electrical and heating distribution systems. Landscape architects from Confluence have surveyed, assessed, designed, and upgraded campus sites as part of their work on the comprehensive 2025 plan.



Outdoor Exhibit Space at Children's Museum of South Dakota, Brookings, SD



ALUMNI GREEN

TSP and Confluence currently are teamed for SDSU's Alumni Green project.

Located on the west side of Medary Avenue, the Alumni Green consists of a new Alumni Center connected to the Jerome J. Lohr Building—home to the SDSU Foundation. The plan also calls for a University House on the block directly to the north, to serve as the University President's residence as well as a hospitality venue.

The two-block area in the shadow of the Coughlin Campanile will form an iconic campus gateway by creating a main entry that gives visitors a true sense of arrival.



This page intentionally left blank

This page intentionally left blank



Harvey Dunn, "Fixing Fence," 1944
Used with permission from South Dakota Art Museum

1112 N. West Ave. Sioux Falls, SD 57104 | phone (605) 336.1160 | www.teamtsp.com

Marshalltown • Marshall • Minneapolis • Rochester • Omaha • Rapid City • Sioux Falls • Sheridan